



HELLENIC REPUBLIC

HELLENIC STATISTICAL AUTHORITY

Piraeus, 9 December 2014

## PRESS RELEASE

### Turnover indices in Transport Sector: 3rd quarter 2014

#### Year on Year growth rates

- The Turnover Index in **land transport and transport via pipelines** in the 3rd quarter 2014 as compared to the 3rd quarter 2013 decreased by 6,4%, while the decrease for the corresponding period of 2013 compared to 2012 was 4,9% (Table 1, Chart 1).
- The Turnover Index in **water transport** in the 3rd quarter 2014 as compared to the 3rd quarter 2013 decreased by 4,6%, while for the corresponding period of 2013 compared to 2012 decreased by 5,9% (Table 2, Chart 2).
- The Turnover Index in **air transport** in the 3rd quarter 2014 as compared to the 3rd quarter 2013 decreased by 7,5%, while for the corresponding period of 2013 compared to 2012 increased by 33,8% (Table 3, Chart 3).
- The Turnover Index in **warehousing and support activities for transportation** in the 3rd quarter 2014 as compared to the 3rd quarter 2013 increased by 4,0%, while for the corresponding period of 2013 compared to 2012 decreased by 8,3% (Table 4, Chart 4).
- The Turnover Index in **travel agency, tour operator reservation service and related activities** in the 3rd quarter 2014 as compared to the 3rd quarter 2013 increased by 8,7%, while for the corresponding period of 2013 compared to 2012 increased by 15,4% (Table 5, Chart 5).

For further information on data please contact:

Division of Statistics on Trade and Services

- Dalli Argiro, tel. (0030) 213 1352499 (divisions 49,51,52,79)
- Nikolaos Kouvaras, tel. (0030) 213 1352187 (division 50)

Fax: (0030) 213 1352398

E-mail: [trade.services@statistics.gr](mailto:trade.services@statistics.gr)

### Quarter on Quarter growth rates

- The Turnover Index in **land transport and transport via pipelines** in the 3rd quarter 2014 as compared to the 2nd quarter 2014 decreased by 3,7%, while the increase for the corresponding period of 2013 was 1,0% (Table 1, Chart 1).
- The Turnover Index in **water transport** in the 3rd quarter 2014 as compared to the 2nd quarter 2014 increased by 66,1%, while the increase for the corresponding period of 2013 was 55,0% (Table 2, Chart 2).
- The Turnover Index in **air transport** in the 3rd quarter 2014 as compared to the 2nd quarter 2014 increased by 34,3%, while the increase for the corresponding period of 2013 was 71,8% (Table 3, Chart 3).
- The Turnover Index in **warehousing and support activities for transportation**, in the 3rd quarter 2014 as compared to the 2nd quarter 2014 increased by 3,5%, while the increase for the corresponding period of 2013 was 1,4% (Table 4, Chart 4).
- The Turnover Index in **travel agency, tour operator reservation service and related activities**, in the 3rd quarter 2014 as compared to the 2nd quarter 2014 increased by 72,3%, while the increase for the corresponding period of 2013 was 65,8% (Table 5, Chart 5).

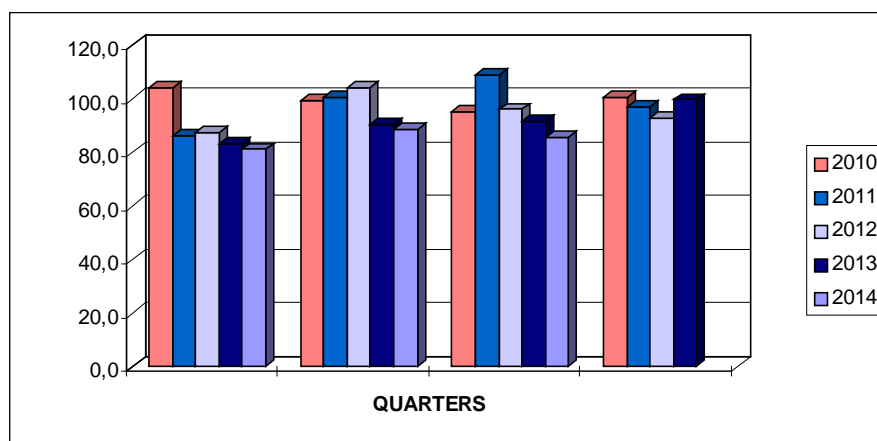
The tables and the graphs that follow present the evolution of the indices from 2010 onwards.

**Table 1. Evolution of Turnover Index in Land Transport and Transport via Pipelines (Nace rev. 2 div. 49 )**

Base year: 2010=100				
Year - Quarter	Index	Year on Year growth rates (%)	Quarter on quarter growth rates (%)	
2010 A	104,5	-12,0	-29,9	
B	99,3	-14,8	-5,0	
C	95,5	-8,8	-3,8	
D	100,7	-32,4	5,4	
<i>Annual mean</i>	<i>100,0</i>	<i>-18,2</i>		
2011 A	86,3	-17,4	-14,3	
B	100,8	1,5	16,8	
C	109,0	14,1	8,1	
D	97,2	-3,5	-10,8	
<i>Annual mean</i>	<i>98,3</i>	<i>-1,7</i>		
2012 A	87,3	1,2	-10,2	
B	104,3	3,5	19,5	
C	96,2	-11,7	-7,8	
D	92,7	-4,6	-3,6	
<i>Annual mean</i>	<i>95,1</i>	<i>-3,3</i>		
2013 A	83,2	-4,7	-10,2	
B	90,6	-13,1	8,9	
C	91,5	-4,9	1,0	
D*	99,8	7,7	9,1	
<i>Annual mean</i>	<i>91,3</i>	<i>-4,0</i>		
2014 A*	81,3	-2,3	-18,5	
B*	88,9	-1,9	9,4	
C	85,6	-6,4	-3,7	

\*The presented data of the 4<sup>th</sup> quarter 2013 & the 1st and 2nd quarter 2014 have been revised

**Diagram1. Evolution of Turnover Index in Land Transport and Transport via Pipelines (2010=100,0)**



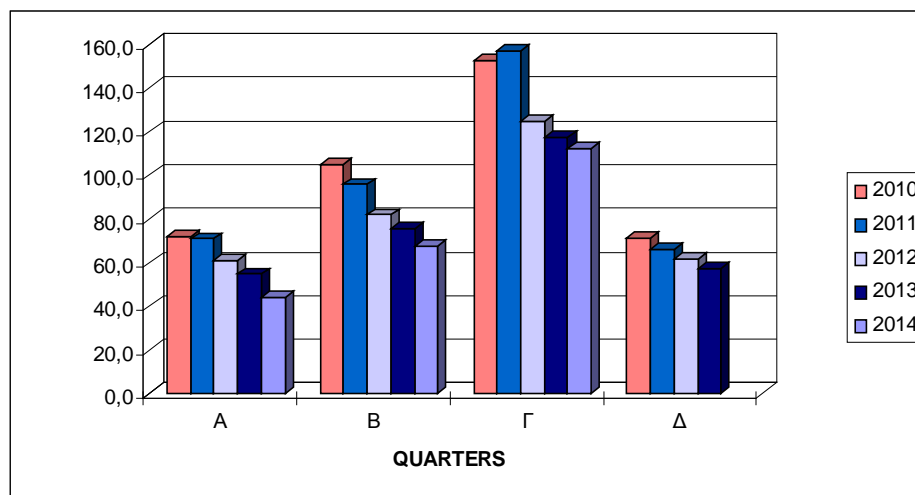
**Table 2. Evolution of Turnover Index in water transport (Nace rev. 2 div. 50)**

Base year: 2010=100			
Year - Quarter	Index	Year on Year growth rates (%)	Quarter on quarter growth rates (%)
2010 A	71,7	-2,7	-7,7
B	104,8	-6,2	46,2
C	152,5	-12,6	45,5
D	71,0	-8,6	-53,4
<i>Annual mean</i>	<i>100,0</i>	<i>-8,6</i>	
2011 A	70,9	-1,1	-0,1
B	95,7	-8,7	35,0
C	157,1	3,0	64,2
D	65,8	-7,3	-58,1
<i>Annual mean</i>	<i>97,4</i>	<i>-2,6</i>	
2012 A	61,1	-13,8	-7,1
B	81,8	-14,5	33,9
C	124,9	-20,5	52,7
D	61,9	-5,9	-50,4
<i>Annual mean</i>	<i>82,4</i>	<i>-15,4</i>	
2013 A	54,8	-10,3	-11,5
B	75,8	-7,3	38,3
C	117,5	-5,9	55,0
D	57,2	-7,6	-51,3
<i>Annual mean</i>	<i>76,3</i>	<i>-7,4</i>	
2014 A	44,3	-19,2	-22,6
* B	67,5	-10,9	52,4
C	112,1	-4,6	66,1

\*The presented data of the 2nd quarter 2014 have been revised

**Footnote:** The decrease is due to the reduction in the freighting of vessels as well as in ticket prices.

**Diagram 2. Evolution of Turnover Index in Water Transport (2010=100,0)**

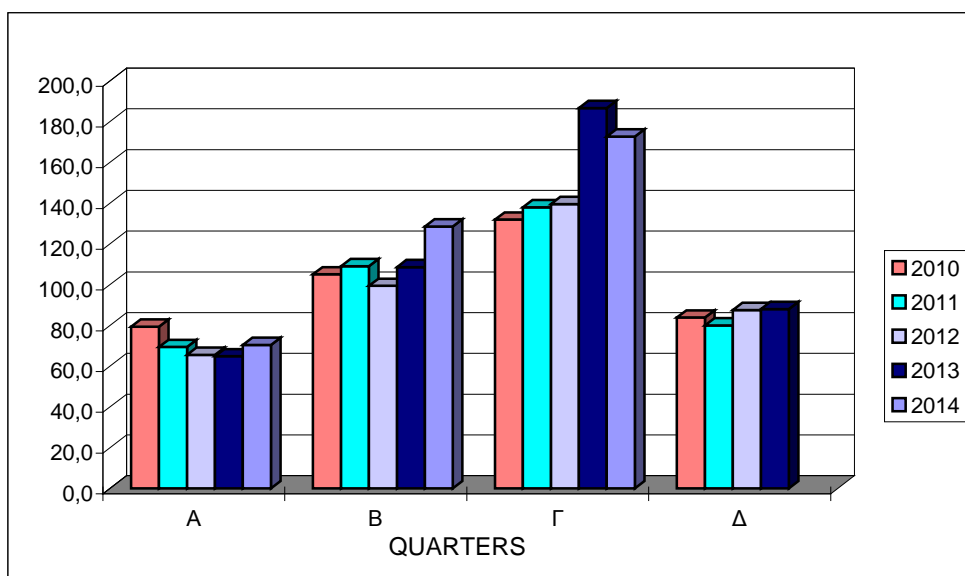


**Table 3. Evolution of Turnover Index in Air Transport (Nace rev. 2 div. 51 )**

Year - Quarter	Index	Base year: 2010=100	
		Year on Year growth rates (%)	Quarter on quarter growth rates (%)
2010 A	79,3	-3,9	-8,6
B	105,0	-9,7	32,4
C	131,9	-8,7	25,6
D	83,8	-3,5	-36,5
<i>Annual mean</i>	<i>100,0</i>	<i>-7,0</i>	
2011 A	69,4	-12,5	-17,2
B	109,0	3,8	57,1
C	137,9	4,5	26,5
D	80,0	-4,5	-42,0
<i>Annual mean</i>	<i>99,1</i>	<i>-0,9</i>	
2012 A	65,5	-5,6	-18,1
B	99,4	-8,8	51,8
C	139,5	1,2	40,3
D	87,5	9,4	-37,3
<i>Annual mean</i>	<i>98,0</i>	<i>-1,1</i>	
2013 A	64,8	-1,1	-25,9
B	108,6	9,3	67,6
C	186,6	33,8	71,8
D	88,0	0,6	-52,8
<i>Annual mean</i>	<i>112,0</i>	<i>14,3</i>	
2014 A	70,4	8,6	-20,0
B	128,5	18,3	82,5
C	172,6	-7,5	34,3

**Footnote:** Certain changes that have occurred in the air transport sector have resulted in a reduction of routes while foreign companies have come into business which are not included in the sample.

**Diagram 3. Evolution of Turnover Index in air Transport (2010=100,0)**

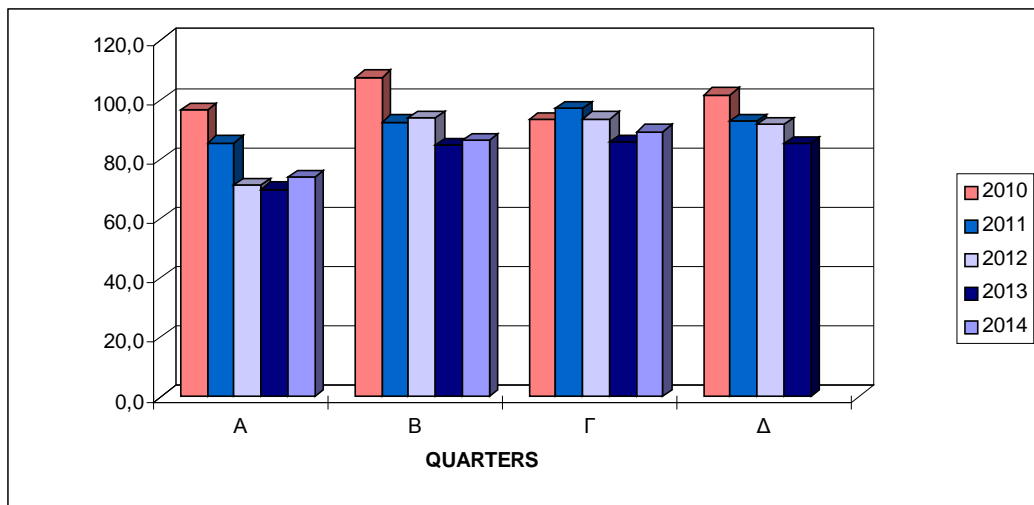


**Table 4. Turnover Index in Warehousing and Support Activities for Transportation  
(Nace rev. 2 div. 52 )**

Base year: 2010=100				
Year - Quarter	Index	Year on Year growth rates (%)	Quarter on quarter growth rates (%)	
2010 A	96,8	-4,5	-19,0	
B	107,8	-6,5	11,4	
C	93,5	-16,7	-13,3	
D	101,9	-14,7	9,0	
<i>Annual mean</i>	<i>100,0</i>	<i>-10,8</i>		
2011 A	85,7	-11,5	-15,9	
B	92,7	-14,0	8,2	
C	97,1	3,9	4,7	
D	92,9	-8,8	-4,3	
<i>Annual mean</i>	<i>92,1</i>	<i>-7,9</i>		
2012 A	71,4	-16,7	-23,1	
B	93,9	1,3	31,5	
C	93,8	-3,4	-0,1	
D	91,7	-1,3	-2,2	
<i>Annual mean</i>	<i>87,7</i>	<i>-4,8</i>		
2013 A	70,0	-2,0	-23,7	
B	84,8	-9,7	21,1	
C	86,0	-8,3	1,4	
D*	85,4	-6,9	-0,7	
<i>Annual mean</i>	<i>81,6</i>	<i>-7,0</i>		
2014 A*	74,2	6,0	-13,1	
B	86,4	1,9	16,4	
C	89,4	4,0	3,5	

\*The presented data of the 4<sup>th</sup> quarter 2013 & the 1st quarter 2014 have been revised

**Diagram 4. Evolution of Turnover Index in Warehousing and Support Activities for Transportation  
(2010=100,0)**

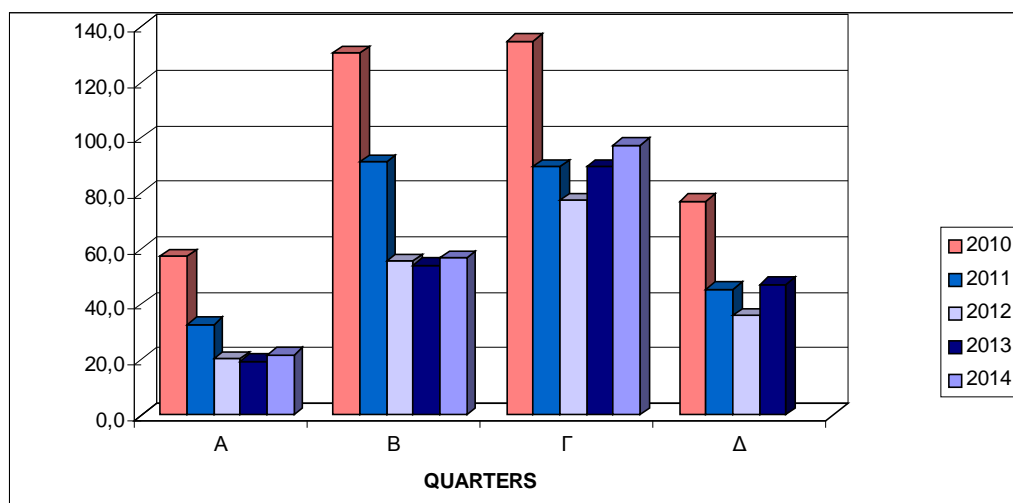


**Table 5. Turnover Index in Travel Agency, Tour Operator Reservation Service and Related Activities (Nace rev. 2 div. 79)**

Year - Quarter	Index	Base year: 2010=100	
		Year on Year growth rates (%)	Quarter on quarter growth rates (%)
2010 A	57,1	-12,7	-56,2
B	130,8	-4,5	129,1
C	135,0	-31,6	3,2
D	77,2	-40,8	-42,8
<i>Annual mean</i>	<i>100,0</i>	<i>-24,5</i>	
2011 A	32,7	-42,7	-57,6
B	91,2	-30,3	178,9
C	89,8	-33,5	-1,5
D	45,4	-41,2	-49,4
<i>Annual mean</i>	<i>64,8</i>	<i>-35,2</i>	
2012 A	20,3	-37,9	-55,3
B	55,4	-39,3	172,9
C	77,7	-13,5	40,3
D	35,8	-21,1	-53,9
<i>Annual mean</i>	<i>47,3</i>	<i>-27,0</i>	
2013 A	19,5	-3,9	-45,5
B	54,1	-2,3	177,4
C	89,7	15,4	65,8
D*	47,2	31,8	-47,4
<i>Annual mean</i>	<i>52,6</i>	<i>11,3</i>	
2014 A*	21,7	11,3	-54,0
B*	56,6	4,6	160,8
C	97,5	8,7	72,3

\*The presented data of the 4<sup>th</sup> quarter 2013 & the 1st and 2nd quarter 2014 have been revised

**Diagram 5. Evolution of Turnover Index in Travel Agency, Tour Operator Reservation Service and Related Activities (2010=100,0)**



## EXPLANATORY NOTES

**Turnover indices in Transport sector** The turnover indices in services are important business indicators, which show the evolution of the services market. The purpose of these indices is to estimate the activity of the surveyed sector in value terms. Turnover comprises the totals invoiced by the observation unit during the reference period (quarter) and corresponds to the market sales of goods and services supplied to third parties. Subsidies on goods or services are also included. Turnover excludes VAT and other similar deductible taxes directly linked to turnover, as well as all duties and taxes on the goods or services invoiced by the observation unit. Income classified as other operating income, financial income and extraordinary income in company accounts is also excluded from turnover.

**Legal basis** The Turnover indices in Transport Sector is compiled on a quarterly basis in compliance with Council Regulation (EC) No 1165/98 concerning short-term statistics as well as pursuant to the requirements Regulation (EC) 1158/2005 of the European Parliament and Council amending the Council Regulation (EC) No 1165/98.

**Reference Period** 01/07/2014 – 30/09/2014

**New Base Year** 2010=100,0

**Revision** The Turnover Indices in Transport Sector have been revised with new base year 2010=100.0. The revision was carried out in the framework agreement of the Member- States of the EU and is obligatory for reasons of comparability. These indicators are revised every five years and specifically in years ending in “0” and “5”.

**Coverage** The compilation of these indices comprises enterprises with year turnovers equal or higher than 250.000 euros, represented by a sample of 300 enterprises covering the total of the country.

**Methodology** The Turnover Indices in Transport Sector cover the whole country and are compiled for divisions 49 – land transport / transport via pipelines, 50 – water transport, 51 – air transport, 52 – warehousing and support activities for transportation and 79 - travel agency, tour operator reservation service and related activities of NACE – Rev.2. statistical classification. The turnover indices in Transport sector are estimated by applying the forward chaining technique. In a first stage, the floating base index is calculated by comparing the estimated turnover value of the current quarter (on the basis of a sample of enterprises) with the corresponding value of the previous quarter. The fixed index of any two-digit division of business activity for the current quarter results from the multiplication of the floating base index by the fixed index of the previous quarter.