



HELLENIC REPUBLIC

HELLENIC STATISTICAL AUTHORITY

Piraeus, 13 December 2011

PRESS RELEASE

Turnover indices in Transport Sector: 3rd quarter 2011

Year on Year growth rates

- The Turnover Index in **land transport and transport via pipelines** in the 3rd quarter 2011 as compared to the 3rd quarter 2010 increased by 14,2%, while the decrease for the corresponding period of 2010 compared to 2009 was 8,7%.
- The Turnover Index in **water transport** in the 3rd quarter 2011 as compared to the 3rd quarter 2010 increased by 2,9%, while for the corresponding period of 2010 compared to 2009 decreased by 12,5%.
- The Turnover Index in **air transport** in the 3rd quarter 2011 as compared to the 3rd quarter 2010 increased by 4,5%, while for the corresponding period of 2010 compared to 2009 decreased by 8,6%.
- The Turnover Index in **warehousing and support activities for transportation** in the 3rd quarter 2011 as compared to the 3rd quarter 2010 increased by 4,0%, while for the corresponding period of 2010 compared to 2009 decreased by 16,8%.
- The Turnover Index in **travel agency, tour operator reservation service and related activities** in the 3rd quarter 2011 as compared to the 3rd quarter 2010 decreased by 33,4%, while for the corresponding period of 2010 compared to 2009 decreased by 31,7%.

For further information on data please contact:

Division of Statistics on Trade and Services

- Dalli Argiro, tel. (0030) 213 1352499 (divisions 49,51,52,79)
- Goulas Vassileios, tel. (0030) 213 1352187 (division 50)

Fax: (0030) 213 1352398

E-mail: trade.services@statistics.gr

Quarter on Quarter growth rates

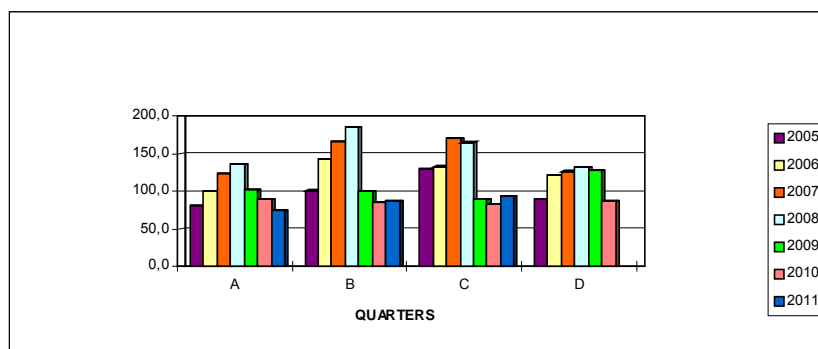
- The Turnover Index in **land transport and transport via pipelines** in the 3rd quarter 2011 as compared to the 2nd quarter 2011 increased by 8,2%, while the decrease for the corresponding period of 2010 was 3,9%.
- The Turnover Index in **water transport** in the 3rd quarter 2011 as compared to the 2nd quarter 2011 increased by 64,2%, while the increase for the corresponding period of 2010 was 45,6 %.
- The Turnover Index in **air transport** in the 3rd quarter 2011 as compared to the 2nd quarter 2011 increased by 26,5%, while the increase for the corresponding period of 2010 was 25,7 %.
- The Turnover Index in **warehousing and support activities for transportation**, in the 3rd quarter 2011 as compared to the 2nd quarter 2011 increased by 4,9%, while the decrease for the corresponding period of 2010 was 13,3%.
- The Turnover Index in **travel agency, tour operator reservation service and related activities**, in the 3rd quarter 2011 as compared to the 2nd quarter 2011 decreased by 1,5%, while the increase for the corresponding period of 2010 was 3,2%.

The tables and the graphs that follow present the evolution of the indices from 2005 and onwards.

Table 1. Evolution of Turnover Index in Land Transport and Transport via Pipelines (Nace rev. 2 div. 49)

		Base year: 2005=100		
Year - Quarter	Index	Year on Year growth rates (%)	Quarter on quarter growth rates (%)	
2005	A	81,3	—	—
	B	101,1	—	24,4
	C	129,0	—	27,6
	D	88,6	—	-31,3
<i>Annual mean</i>		100,0		
2006	A	99,4	22,3	12,2
	B	141,5	40,0	42,4
	C	132,8	2,9	-6,1
	D	121,9	37,6	-8,2
<i>Annual mean</i>		123,9	23,9	
2007	A	123,5	24,2	1,3
	B	166,3	17,5	34,7
	C	169,6	27,7	2,0
	D	126,4	3,7	-25,5
<i>Annual mean</i>		146,5	18,2	
2008	A	135,4	9,6	7,1
	B	184,7	11,1	36,4
	C	164,6	-2,9	-10,9
	D	131,0	3,6	-20,4
<i>Annual mean</i>		153,9	5,1	
2009	A	102,5	-24,3	-21,8
	B	100,6	-45,5	-1,9
	C	90,3	-45,1	-10,2
	D	128,3	-2,1	42,1
<i>Annual mean</i>		105,4	-31,5	
2010	A	90,2	-12,0	-29,7
	B	85,7	-14,8	-5,0
	C	82,4	-8,7	-3,9
	D	86,9	-32,3	5,5
<i>Annual mean</i>		86,3	-18,1	
2011	A	74,5	-17,4	-14,3
	B	87,0	1,5	16,8
	C	94,1	14,2	8,2

Diagram1. Evolution of Turnover Index in Land Transport and Transport via Pipelines (2005=100,0)

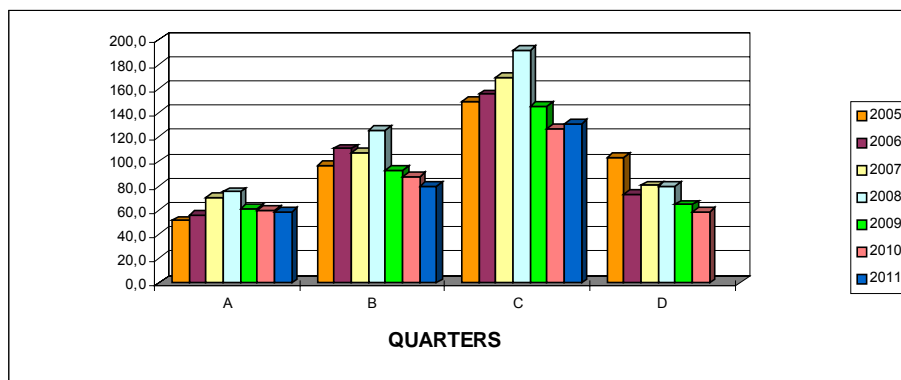


The presented data of the first and second quarter 2009 have been revised

Table 2. Evolution of Turnover Index in water transport (Nace rev. 2 div. 50)

		Base year: 2005=100		
Year - Quarter	Index	Year on Year growth rates (%)	Quarter on quarter growth rates (%)	
2005	A	51,2	-	-
	B	96,8	-	89,1
	C	149,1	-	54,0
	D	102,9	-	-31,0
<i>Annual mean</i>		<i>100,0</i>		
2006	A	56,4	10,2	-45,2
	B	110,6	14,3	96,1
	C	155,2	4,1	40,3
	D	72,9	-29,2	-53,0
<i>Annual mean</i>		<i>98,8</i>	<i>-1,2</i>	
2007	A	70,2	24,5	-3,7
	B	107,4	-2,9	53,0
	C	169,2	9,0	57,5
	D	80,4	10,3	-52,5
<i>Annual mean</i>		<i>106,8</i>	<i>8,1</i>	
2008	A	75,0	6,8	-6,7
	B	125,4	16,8	67,2
	C	191,0	12,9	52,3
	D	79,3	-1,4	-58,5
<i>Annual mean</i>		<i>117,7</i>	<i>10,2</i>	
2009	A	61,2	-18,4	-22,8
	B	92,8	-26,0	51,6
	C	144,9	-24,1	56,1
	D	64,5	-18,7	-55,5
<i>Annual mean</i>		<i>90,9</i>	<i>-22,8</i>	
2010	A	59,6	-2,6	-7,6
	B	87,1	-6,1	46,1
	C	126,8	-12,5	45,6
	D	59,0	-8,5	-53,5
<i>Annual mean</i>		<i>83,1</i>	<i>-8,5</i>	
2011	A	58,9	-1,2	-0,2
	B	79,5	-8,7	35,0
	C	130,5	2,9	64,2

Diagram 2. Evolution of Turnover Index in Water Transport (2005=100,0)

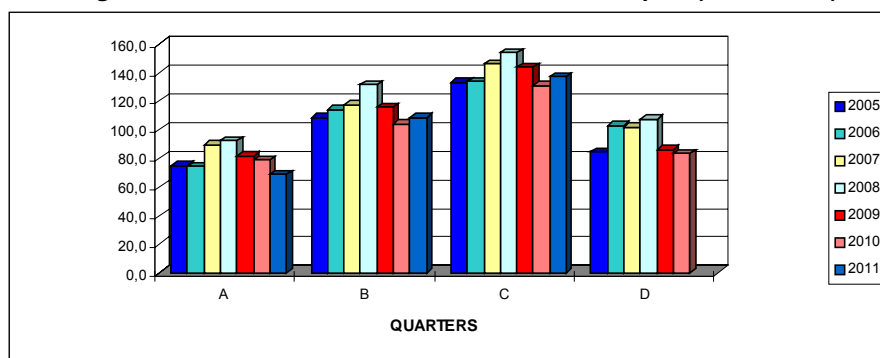


The presented data of the first and second quarter 2009 have been revised

Table 3. Evolution of Turnover Index in Air Transport (Nace rev. 2 div. 51)

		Base year: 2005=100		
Year - Quarter	Index	Year on Year growth rates (%)	Quarter on quarter growth rates (%)	
2005	A	74,7	—	—
	B	108,1	—	44,7
	C	132,7	—	22,8
	D	84,5	—	-36,3
<i>Annual mean</i>		100,0		
2006	A	74,6	-0,1	-11,7
	B	113,8	5,3	52,5
	C	133,7	0,8	17,5
	D	102,9	21,8	-23,0
<i>Annual mean</i>		106,3	6,3	
2007	A	89,2	19,6	-13,3
	B	117,7	3,4	32,0
	C	145,8	9,1	23,9
	D	101,9	-1,0	-30,1
<i>Annual mean</i>		113,7	7,0	
2008	A	92,1	3,3	-9,6
	B	131,2	11,5	42,5
	C	153,6	5,3	17,1
	D	107,2	5,2	-30,2
<i>Annual mean</i>		121,0	6,5	
2009	A	82,0	-11,0	-23,5
	B	115,6	-11,9	41,0
	C	143,5	-6,6	24,1
	D	86,2	-19,6	-39,9
<i>Annual mean</i>		106,8	-11,7	
2010	A	78,8	-3,9	-8,6
	B	104,3	-9,8	32,4
	C	131,1	-8,6	25,7
	D	83,3	-3,4	-36,5
<i>Annual mean</i>		99,4	-7,0	
2011	A	69,0	-12,4	-17,2
	B	108,3	3,8	57,0
	C	137,0	4,5	26,5

Diagram 3. Evolution of Turnover Index in air Transport (2005=100,0)

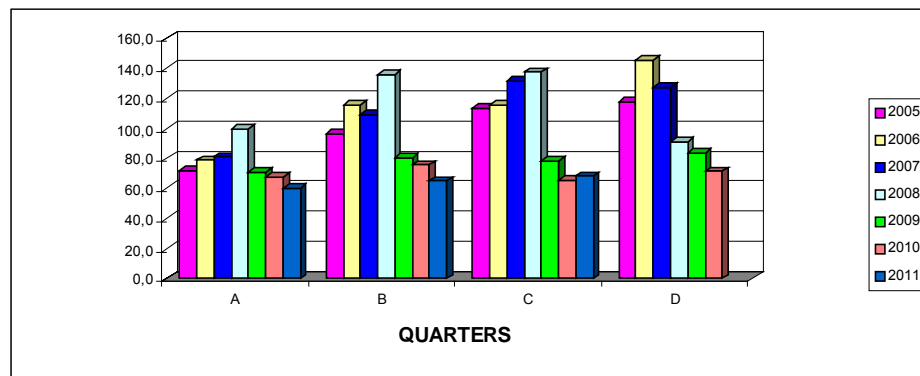


The presented data for the years 2009,2010 and the first and second quarter 2011 have been revised

**Table 4. Turnover Index in Warehousing and Support Activities for Transportation
(Nace rev. 2 div. 52)**

		Base year: 2005=100		
Year - Quarter	Index	Year on Year growth rates (%)	Quarter on quarter growth rates (%)	
2005 A	72,1	—	—	
B	96,9	—	34,4	
C	113,2	—	16,8	
D	117,8	—	4,1	
<i>Annual mean</i>	<i>100,0</i>			
2006 A	78,9	9,4	-33,0	
B	115,8	19,5	46,8	
C	116,0	2,5	0,2	
D	146,0	23,9	25,9	
<i>Annual mean</i>	<i>114,2</i>	<i>14,2</i>		
2007 A	81,0	2,7	-44,5	
B	109,3	-5,6	34,9	
C	132,1	13,9	20,9	
D	127,7	-12,5	-3,3	
<i>Annual mean</i>	<i>112,5</i>	<i>-1,4</i>		
2008 A	99,4	22,7	-22,2	
B	136,0	24,4	36,8	
C	137,5	4,1	1,1	
D	91,2	-28,6	-33,7	
<i>Annual mean</i>	<i>116,0</i>	<i>3,1</i>		
2009 A	71,2	-28,4	-21,9	
B	80,9	-40,5	13,6	
C	78,8	-42,7	-2,6	
D	83,9	-8,0	6,5	
<i>Annual mean</i>	<i>78,7</i>	<i>-32,2</i>		
2010 A	67,9	-4,6	-19,1	
B	75,7	-6,4	11,5	
C	65,6	-16,8	-13,3	
D	71,5	-14,8	9,0	
<i>Annual mean</i>	<i>70,2</i>	<i>-10,8</i>		
2011 A	60,1	-11,5	-15,9	
B	65,0	-14,1	8,2	
C	68,2	4,0	4,9	

**Diagram 4. Evolution of Turnover Index in Warehousing and Support Activities for Transportation
(2005=100,0)**

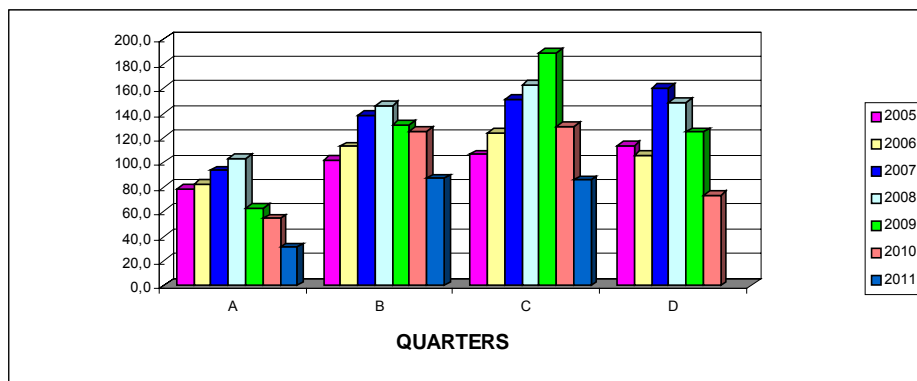


The presented data for the years 2009,2010 and the first and second quarter 2011 have been revised

Table 5. Turnover Index in Travel Agency, Tour Operator Reservation Service and Related Activities (Nace rev. 2 div. 79)

		Base year: 2005=100		
Year - Quarter	Index	Year on Year growth rates (%)	Quarter on quarter growth rates (%)	
2005 A	78,2	—	—	
B	101,5	—	29,8	
C	106,5	—	4,9	
D	113,8	—	6,9	
<i>Annual mean</i>	<i>100,0</i>			
2006 A	82,7	5,8	-27,3	
B	112,9	11,2	36,5	
C	124,5	16,9	10,3	
D	105,8	-7,0	-15,0	
<i>Annual mean</i>	<i>106,5</i>	<i>6,5</i>		
2007 A	93,5	13,1	-11,6	
B	137,9	22,1	47,5	
C	151,7	21,8	10,0	
D	160,0	51,2	5,5	
<i>Annual mean</i>	<i>135,8</i>	<i>27,5</i>		
2008 A	103,7	10,9	-35,2	
B	146,2	6,0	41,0	
C	163,3	7,6	11,7	
D	148,7	-7,1	-8,9	
<i>Annual mean</i>	<i>140,5</i>	<i>3,5</i>		
2009 A	62,5	-39,7	-58,0	
B	130,7	-10,6	109,1	
C	188,6	15,5	44,3	
D	124,6	-16,2	-33,9	
<i>Annual mean</i>	<i>126,6</i>	<i>-9,9</i>		
2010 A	54,5	-12,8	-56,3	
B	124,9	-4,4	129,2	
C	128,9	-31,7	3,2	
D	73,8	-40,8	-42,7	
<i>Annual mean</i>	<i>95,5</i>	<i>-24,5</i>		
2011 A	31,2	-42,8	-57,7	
B	87,1	-30,3	179,2	
C	85,8	-33,4	-1,5	

Diagram 5. Evolution of Turnover Index in Travel Agency, Tour Operator Reservation Service and Related Activities (2005=100,0)



The presented data for the years 2009,2010 have been revised.

EXPLANATORY NOTES

Turnover indices in Transport sector	<p>The turnover indices in services are important business indicators, which show the evolution of the market for services. The objective of these indices is to calculate the activity of the surveyed sector in value terms. The Turnover comprises the totals invoiced by the observation unit during the reference period (quarter) and corresponds to the market sales of goods and services supplied to third parties. Subsidies on goods or services are also included. Turnover excludes VAT and other similar deductible taxes directly linked to turnover as well as all duties and taxes on the goods or services invoiced by the unit. Income classified as other operating income, financial income and extraordinary income in company accounts is also excluded from turnover</p>
Legal basis	<p>The compilation and publication of these new indices in Transport Sector is based upon the requirements of the Council Regulation (EC) No 1165/98 concerning short-term statistics as well as the amendment Regulation 1158/2005 of the European Parliament and Council amending the Council Regulation (EC) No 1165/98.</p>
Reference Date	<p>01/07/2011 – 30/09/2011</p>
Base Year	<p>2005=100,0</p>
Cover	<p>The compilation of these indices comprises enterprises with year turnovers equal or higher than 250.000 euros, represented by a sample of 225 enterprises covering the total of the country.</p>
Methodology	<p>The Turnover Indices in Transport Sector cover the total of the country and are compiled for divisions 49 – land transport / transport via pipelines, 50 – water transport, 51 – air transport, 52 – warehousing and support activities for transportation and 79 - travel agency, tour operator reservation service and related activities of NACE – Rev.2. statistical classification. For reasons of comparison the Turnover Indices, concerning the years 2005 till 2008, for divisions 52 and 79 have been recalculated according to NACE Rev.2.</p> <p>The turnover indices in Transport are being estimated by applying the forward chaining technique. In primary, the floating base index is estimated by the comparison of the appraised turnover value of the current quarter to the corresponding value of the previous quarter. The fixed index of any two-digit division of business activity concerning the current quarter results from the multiplication of the floating base index by the fixed index of the previous quarter.</p>