



HELLENIC REPUBLIC
MINISTRY OF FINANCE



GENERAL SECRETARIAT OF
THE NATIONAL STATISTICAL SERVICE
OF GREECE

Piraeus, 18 December 2009

PRESS RELEASE

The turnover index in Transport Sector presented a decrease in a range of 19,5% up to 45,1% in divisions (49),(50),(51),(52) and increased by 3,7% in division (79)

Turnover indices in Transport Sector: 3rd quarter 2009

Year on Year growth rates

- The Turnover Index in **land transport and transport via pipelines** in the 3rd quarter 2009 as compared to the 3rd quarter 2008 decreased by 45,1%, while the decrease for the corresponding period of 2008 compared to 2007 was 2,9%.
- The Turnover Index in **water transport** in the 3rd quarter 2009 as compared to the 3rd quarter 2008 decreased by 24,1%, while for the corresponding period of 2008 compared to 2007 increased by 12,9%.
- The Turnover Index in **air transport** in the 3rd quarter 2009 as compared to the 3rd quarter 2008 decreased by 19,5 %, while for the corresponding period of 2008 compared to 2007 increased by 5,3%.
- The Turnover Index in **warehousing and support activities for transportation** in the 3rd quarter 2009 as compared to the 3rd quarter 2008 decreased by 43,3%, while for the corresponding period of 2008 compared to 2007 increased by 4,1%.
- The Turnover Index in **travel agency, tour operator reservation service and related activities** in the 3rd quarter 2009 as compared to the 3rd quarter 2008 increased by 3,7%, while for the corresponding period of 2008 compared to 2007 increased by 7,6%.

For further information on data please contact:

Division of Statistics on Trade and Services

- Papadopoulou Zoi, tel. (0030) 2104852056 (divisions 49,51,52,79)
- Goulas Vassileios, tel. (0030) 2104852187 (division 50)

Fax: (0030) 2104852398

E-mail: trade.services@statistics.gr

Quarter on Quarter growth rates

- The Turnover Index in **land transport and transport via pipelines** in the 3rd quarter 2009 as compared to the 2nd quarter 2009 decreased by 10,2%, while the decrease for the corresponding period of 2008 was 10,9%.
- The Turnover Index in **water transport** in the 3rd quarter 2009 as compared to the 2nd quarter 2009 increased by 56,1%, while the growth for the corresponding period of 2008 was 52,3 %.
- The Turnover Index in **air transport** in the 3rd quarter 2009 as compared to the 2nd quarter 2009 increased by 2,9%, while the growth for the corresponding period of 2008 was 17,1%.
- The Turnover Index in **warehousing and support activities for transportation**, in the 3rd quarter 2009 as compared to the 2nd quarter 2009 decreased by 1,3%, while the growth for the corresponding period of 2008 was 1,1%.
- The Turnover Index in **travel agency, tour operator reservation service and related activities**, in the 3rd quarter 2009 as compared to the 2nd quarter 2009 increased by 37,3%, while the growth for the corresponding period of 2008 was 11,7%.

The tables and the graphs that follow present the evolution of the indices from 2005 and onwards.

The presented data of the first and second quarter 2009 have been revised concerning divisions 49,50 and 79.

Table 1. Evolution of Turnover Index in land transport and transport via pipelines

(Nace rev. 2 div. 49)

		Base Year: 2005=100,0		
Year - Quarter	Index	Year on Year growth rates (%)	Quarter on quarter growth rates (%)	
2005	A	81,3	—	—
	B	101,1	—	24,4
	C	129,0	—	27,6
	D	88,6	—	-31,3
<i>Annual mean</i>		<i>100,0</i>		
2006	A	99,4	22,3	12,2
	B	141,5	40,0	42,4
	C	132,8	2,9	-6,1
	D	121,9	37,6	-8,2
<i>Annual mean</i>		<i>123,9</i>	<i>23,9</i>	
2007	A	123,5	24,2	1,3
	B	166,3	17,5	34,7
	C	169,6	27,7	2,0
	D	126,4	3,7	-25,5
<i>Annual mean</i>		<i>146,5</i>	<i>18,2</i>	
2008	A	135,4	9,6	7,1
	B	184,7	11,1	36,4
	C	164,6	-2,9	-10,9
	D	131,0	3,6	-20,4
<i>Annual mean</i>		<i>153,9</i>	<i>5,1</i>	
2009	A	102,5	-24,3	-21,8
	B	100,6	-45,5	-1,9
	C	90,3	-45,1	-10,2

Graph 1. Evolution of Turnover Index in Land transport and transport via pipelines

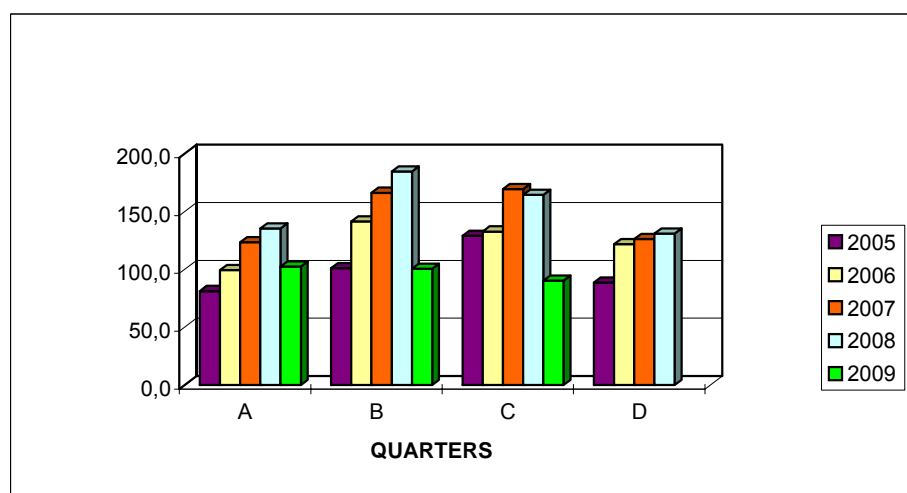


Table 2. Evolution of Turnover Index in Water transport

(Nace rev. 2 div. 50)

		Base Year: 2005=100,0		
Year - Quarter		Index	Year on Year growth rates (%)	Quarter on quarter growth rates (%)
2005	A	51,2	—	—
	B	96,8	—	89,1
	C	149,1	—	54,0
	D	102,9	—	-31,0
<i>Annual mean</i>		<i>100,0</i>		
2006	A	56,4	10,2	-45,2
	B	110,6	14,3	96,1
	C	155,2	4,1	40,3
	D	72,9	-29,2	-53,0
<i>Annual mean</i>		<i>98,8</i>	<i>-1,2</i>	
2007	A	70,2	24,5	-3,7
	B	107,4	-2,9	53,0
	C	169,2	9,0	57,5
	D	80,4	10,3	-52,5
<i>Annual mean</i>		<i>106,8</i>	<i>8,1</i>	
2008	A	75,0	6,8	-6,7
	B	125,4	16,8	67,2
	C	191,0	12,9	52,3
	D	79,3	-1,4	-58,5
<i>Annual mean</i>		<i>117,7</i>	<i>10,2</i>	
2009	A	61,2	-18,4	-22,8
	B	92,8	-26,0	51,6
	C	144,9	-24,1	56,1

Graph 2. Evolution of Turnover Index in Water transport

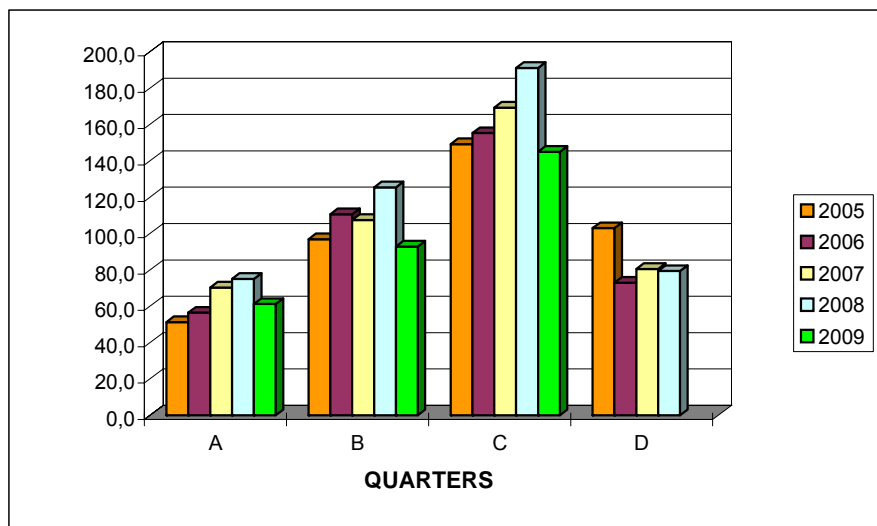


Table 3. Evolution of Turnover Index in Air Transport

(Nace rev. 2 div. 51)

		Base Year: 2005=100,0		
Year - Quarter		Index	Year on Year growth rates (%)	Quarter on quarter growth rates (%)
2005	A	74,7	—	—
	B	108,1	—	44,7
	C	132,7	—	22,8
	D	84,5	—	-36,3
<i>Annual mean</i>		<i>100,0</i>		
2006	A	74,6	-0,1	-11,7
	B	113,8	5,3	52,5
	C	133,7	0,8	17,5
	D	102,9	21,8	-23,0
<i>Annual mean</i>		<i>106,3</i>	<i>6,3</i>	
2007	A	89,2	19,6	-13,3
	B	117,7	3,4	32,0
	C	145,8	9,1	23,9
	D	101,9	-1,0	-30,1
<i>Annual mean</i>		<i>113,7</i>	<i>7,0</i>	
2008	A	92,1	3,3	-9,6
	B	131,2	11,5	42,5
	C	153,6	5,3	17,1
	D	107,2	5,2	-30,2
<i>Annual mean</i>		<i>121,0</i>	<i>6,5</i>	
2009	A	94,9	3,0	-11,5
	B	120,1	-8,5	26,6
	C	123,6	-19,5	2,9

Graph 3. Evolution of Turnover Index in Air transport

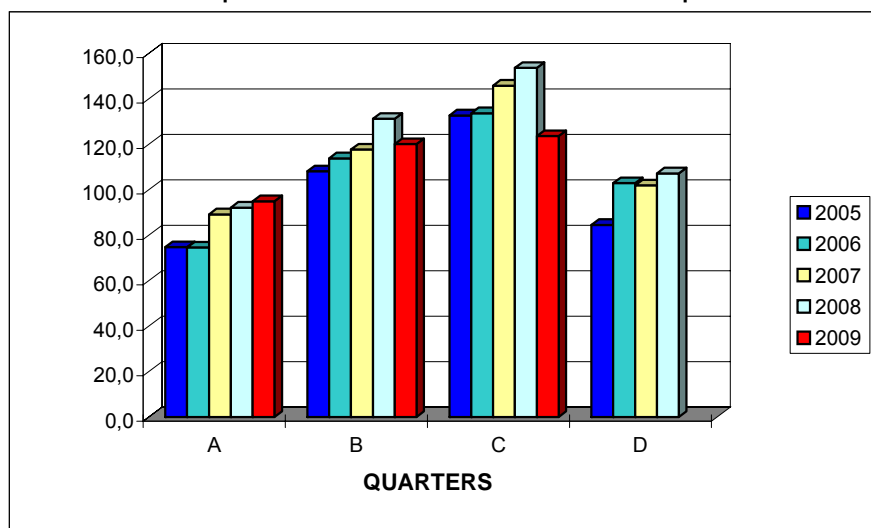


Table 4. Evolution of Turnover Index in Warehousing and support activities for transportation

(Nace rev. 2 div. 52)

Base Year: 2005=100,0

Year - Quarter		Index	Year on Year growth rates (%)	Quarter on quarter growth rates
2005	A	72,1	—	—
	B	96,9	—	34,4
	C	113,2	—	16,8
	D	117,8	—	4,1
<i>Annual mean</i>		<i>100,0</i>		
2006	A	78,9	9,4	-33,0
	B	115,8	19,5	46,8
	C	116,0	2,5	0,2
	D	146,0	23,9	25,9
<i>Annual mean</i>		<i>114,2</i>	<i>14,2</i>	
2007	A	81,0	2,7	-44,5
	B	109,3	-5,6	34,9
	C	132,1	13,9	20,9
	D	127,7	-12,5	-3,3
<i>Annual mean</i>		<i>112,5</i>	<i>-1,4</i>	
2008	A	99,4	22,7	-22,2
	B	136,0	24,4	36,8
	C	137,5	4,1	1,1
	D	91,2	-28,6	-33,7
<i>Annual mean</i>		<i>116,0</i>	<i>3,1</i>	
2009	A	68,4	-31,2	-25,0
	B	78,9	-42,0	15,4
	C	77,9	-43,3	-1,3

Graph 4. Evolution of Turnover Index in Warehousing and support activities for transportation

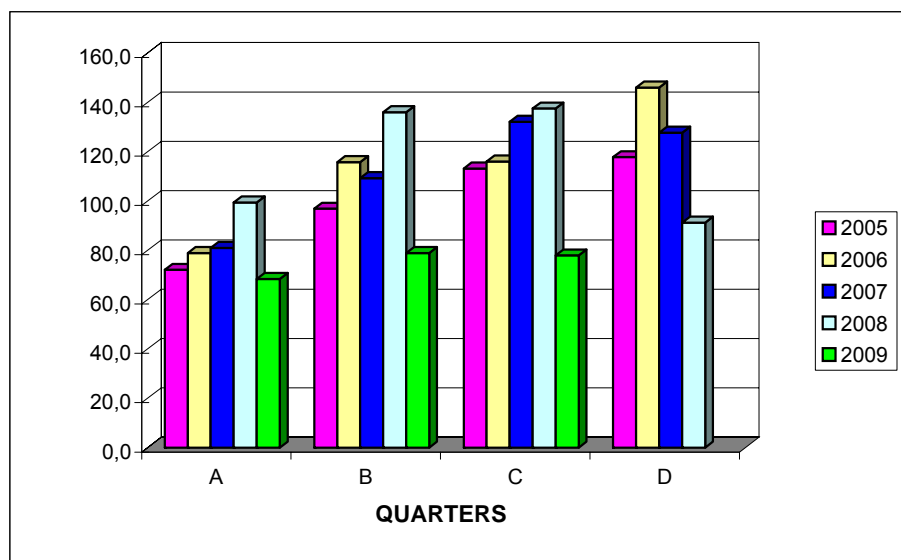
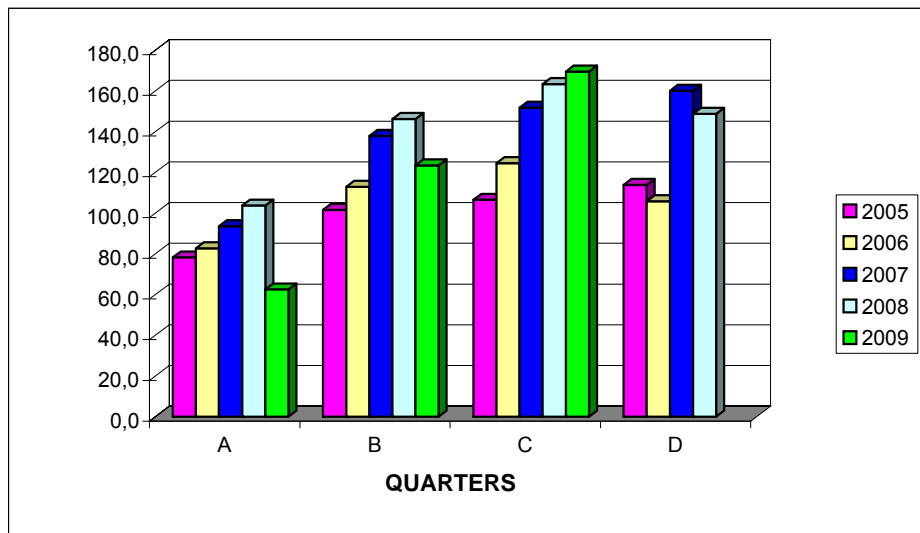


Table 5. Evolution of Turnover Index in Travel agency, tour operator reservation,service andd related activities

(Nace rev. 2 div. 79)

Base Year: 2005=100,0				
Year - Quarter	Index	Year on Year growth rates (%)	Quarter on quarter growth rates (%)	
2005	A	78,2	—	—
	B	101,5	—	29,8
	C	106,5	—	4,9
	D	113,8	—	6,9
<i>Annual mean</i>		<i>100,0</i>		
2006	A	82,7	5,8	-27,3
	B	112,9	11,2	36,5
	C	124,5	16,9	10,3
	D	105,8	-7,0	-15,0
<i>Annual mean</i>		<i>106,5</i>	<i>6,5</i>	
2007	A	93,5	13,1	-11,6
	B	137,9	22,1	47,5
	C	151,7	21,8	10,0
	D	160,0	51,2	5,5
<i>Annual mean</i>		<i>135,8</i>	<i>27,5</i>	
2008	A	103,7	10,9	-35,2
	B	146,2	6,0	41,0
	C	163,3	7,6	11,7
	D	148,7	-7,1	-8,9
<i>Annual mean</i>		<i>140,5</i>	<i>3,5</i>	
2009	A	62,5	-39,7	-58,0
	B	123,4	-15,6	97,4
	C	169,4	3,7	37,3

Graph 5. Evolution of Turnover Index in Travel agency, tour operator reservation,service andd related activities



EXPLANATORY NOTES

Turnover indices in Transport sector

The turnover indices in services are important business indicators, which show the evolution of the market for services. The objective of these indices is to calculate the activity of the surveyed sector in value terms. The Turnover comprises the totals invoiced by the observation unit during the reference period (quarter) and corresponds to the market sales of goods and services supplied to third parties. Subsidies on goods or services are also included. Turnover excludes VAT and other similar deductible taxes directly linked to turnover as well as all duties and taxes on the goods or services invoiced by the unit. Income classified as other operating income, financial income and extraordinary income in company accounts is also excluded from turnover

Legal basis The compilation and publication of these new indices in Transport Sector is based upon the requirements of the Council Regulation (EC) No 1165/98 concerning short-term statistics as well as the amendment Regulation 1158/2005 of the European Parliament and Council amending the Council Regulation (EC) No 1165/98.

Reference Date 01/07/2009 – 30/09/2009

Base Year 2005=100,0

Cover The compilation of these indices comprises enterprises with year turnovers equal or higher than 250.000 euros, represented by a sample of 225 enterprises covering the total of the country.

Methodology The Turnover Indices in Transport Sector cover the total of the country and are compiled for divisions 49 – land transport / transport via pipelines, 50 – water transport, 51 – air transport, 52 – warehousing and support activities for transportation and 79 - travel agency, tour operator reservation service and related activities of NACE – Rev.2. statistical classification. For reasons of comparison the Turnover Indices, concerning the years 2005 till 2008, for divisions 52 and 79 have been recalculated according to NACE Rev.2.

The turnover indices in Transport are being estimated by applying the forward chaining technique. In primary, the floating base index is estimated by the comparison of the appraised turnover value of the current quarter to the corresponding value of the previous quarter. The fixed index of any two-digit division of business activity concerning the current quarter results from the multiplication of the floating base index by the fixed index of the previous quarter.