



HELLENIC REPUBLIC



MINISTRY OF ECONOMY AND FINANCE



GENERAL SECRETARIAT OF
THE NATIONAL STATISTICAL SERVICE
OF GREECE

Piraeus, 17 June 2009

PRESS RELEASE

Turnover indices in Transport Sector¹

1st quarter 2009

The National Statistical Service of Greece publishes Turnover Indices in Transport Sector for the 1st quarter 2009 with base year 2005 = 100.0, according to final data, adjusted for the actual number of working days.

Beginning from the 1st quarter 2009 'NACE Rev 2', the new statistical classification of economic activities in the European Union, is established and implemented replacing 'NACE Rev 1.1'.

Year on Year growth rates

- The Turnover Index in **land transport and transport via pipelines** in the 1st quarter 2009 as compared to the 1st quarter 2008 decreased by 36,7%, while the growth for the corresponding period of 2008 compared to 2007 was 9,6%.
- The Turnover Index in **water transport** in the 1st quarter 2009 as compared to the 1st quarter 2008 decreased by 14,9%, while for the corresponding period of 2008 compared to 2007 increased by 6,9%.
- The Turnover Index in **air transport** in the 1st quarter 2009 as compared to the 1st quarter 2008 increased by 3,0 %, while for the corresponding period of 2008 compared to 2007 increased by 3,3%.
- The Turnover Index in **warehousing and support activities for transportation** in the 1st quarter 2009 as compared to the 1st quarter 2008 decreased by 31,2%, while for the corresponding period of 2008 compared to 2007 increased by 22,7%.
- The Turnover Index in **travel agency, tour operator reservation service and related activities** in the 1st quarter 2009 as compared to the 1st quarter 2008 decreased by 49,4%, while for the corresponding period of 2008 compared to 2007 increased by 11,0%.

Quarter on Quarter growth rates

- The Turnover Index in **land transport and transport via pipelines** in the 1st quarter 2009 as compared to the 4th quarter 2008 decreased by 34,6%, while the growth for the corresponding period of 2008 was 7,1%.
- The Turnover Index in **water transport** in the 1st quarter 2009 as compared to the 4th quarter 2008 decreased by 19,5%, while the decrease for the corresponding period of 2008 was 6,7 %.
- The Turnover Index in **air transport** in the 1st quarter 2009 as compared to the 4th quarter 2008 decreased by 11,5%, while the decrease for the corresponding period of 2008 was 9,6%.
- The Turnover Index in **warehousing and support activities for transportation**, in the 1st quarter 2009 as compared to the 4th quarter 2008 decreased by 25,0%, while the decrease for the corresponding period of 2008 was 22,2%.
- The Turnover Index in **travel agency, tour operator reservation service and related activities**, in the 1st quarter 2009 as compared to the 4th quarter 2008 decreased by 64,7%, while the decrease for the corresponding period of 2008 was 35,1%.

The tables and the diagrams that follow present the evolution of the indices from 2005 onwards

¹ The compilation and publication of these new indices in Transport Sector is based upon the requirements of the Council Regulation (EC) No 1165/98 concerning short-term statistics as well as the amendment Regulation 1158/2005 of the European Parliament and Council amending the Council Regulation (EC) No 1165/98. The turnover indices in services are important business indicators, which show the evolution of the market for services.

The objective of these indices is to calculate the activity of the surveyed sector in value terms.

The Turnover comprises the totals invoiced by the observation unit during the reference period (quarter) and corresponds to the market sales of goods and services supplied to third parties. Subsidies on goods or services are also included. Turnover excludes VAT and other similar deductible taxes directly linked to turnover as well as all duties and taxes on the goods or services invoiced by the unit. Income classified as other operating income, financial income and extraordinary income in company accounts is also excluded from turnover.

The Turnover Indices in Transport Sector cover the total of the country and are compiled for divisions **49** – land transport / transport via pipelines, **50** – water transport, **51** – air transport, **52** – warehousing and support activities for transportation and **79** - travel agency, tour operator reservation service and related activities of **NACE – Rev.2. statistical classification**.

For reasons of comparison the Turnover Indices, concerning the years 2005 till 2008, for divisions **52** and **79** have been recalculated according to NACE Rev.2.

For further information on data please contact

- Papadopoulou Zoi, tel. (0030) 2104852056 (divisions 49,51,52,79)
- Goulas Vassileios, tel. (0030) 2104852187 (division 50)

Division of Statistics on Trade and Services

Fax: (0030) 2104852398

E-mail: trade.services@statistics.gr

TABLE 1

**Evolution of Turnover Index in Land Transport and Transport via pipelines
(Nace rev. 2 div. 49 instead of Nace rev. 1.1 div. 60)**

working days adjusted series

(2005=100,0)

Year - Quarter		Index	Year on Year growth rates (%)	Quarter on quarter growth rates (%)
2005	A	81,3	—	—
	B	101,1	—	24,4
	C	129,0	—	27,6
	D	88,6	—	-31,3
<i>Annual mean</i>		100		
2006	A	99,4	22,3	12,2
	B	141,5	40,0	42,3
	C	132,8	2,9	-6,2
	D	121,9	37,5	-8,2
<i>Annual mean</i>		123,9	23,9	
2007	A	123,5	24,3	1,4
	B	166,2	17,5	34,6
	C	169,6	27,7	2,0
	D	126,4	3,7	-25,5
<i>Annual mean</i>		146,4	18,2	
2008	A	135,4	9,6	7,1
	B	184,7	11,1	36,4
	C	164,6	-3,0	-10,9
	D	131,0	3,6	-20,4
<i>Annual mean</i>		153,9	5,1	
2009	A	85,7	-36,7	-34,6

DIAGRAM 1

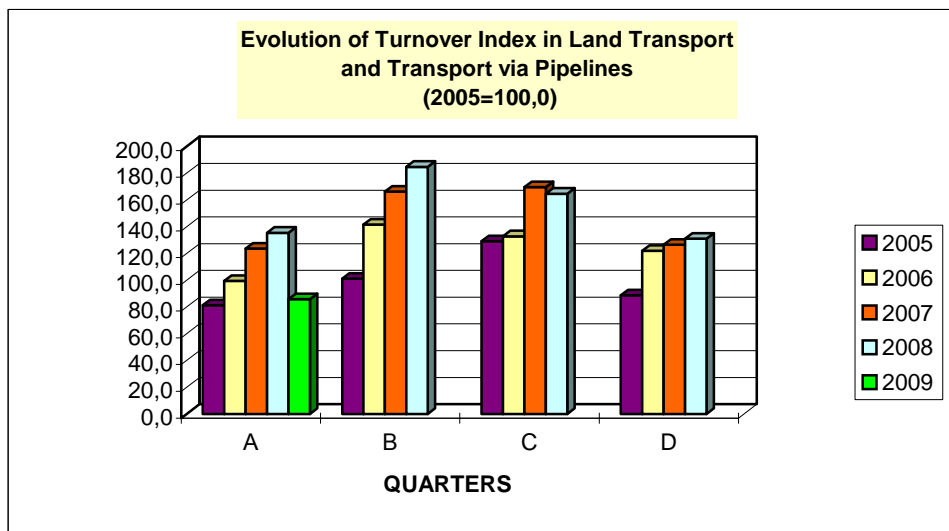


TABLE 2
Evolution of Turnover Index in Water Transport
(Nace rev. 2 div. 50 instead of Nace rev. 1.1 div. 61)
working days adjusted series
(2005=100,0)

Year - Quarter		Index	Year on Year growth rates (%)	Quarter on quarter growth rates (%)
2005	A	51,2	—	—
	B	96,8	—	88,9
	C	149,1	—	54,1
	D	102,9	—	-31,0
<i>Annual mean</i>		100		
2006	A	56,4	10,1	-45,2
	B	110,5	14,2	96,1
	C	155,2	4,1	40,4
	D	72,9	-29,1	-53,0
<i>Annual mean</i>		98,8	-1,2	
2007	A	70,1	24,4	-3,8
	B	107,4	-2,9	53,1
	C	169,2	9,0	57,5
	D	80,4	10,3	-52,5
<i>Annual mean</i>		106,8	8,1	
2008	A	75,0	6,9	-6,7
	B	125,4	16,8	67,2
	C	191,0	12,9	52,3
	D	79,3	-1,4	-58,5
<i>Annual mean</i>		117,7	10,2	
2009	A	63,8	-14,9	-19,5

DIAGRAM 2

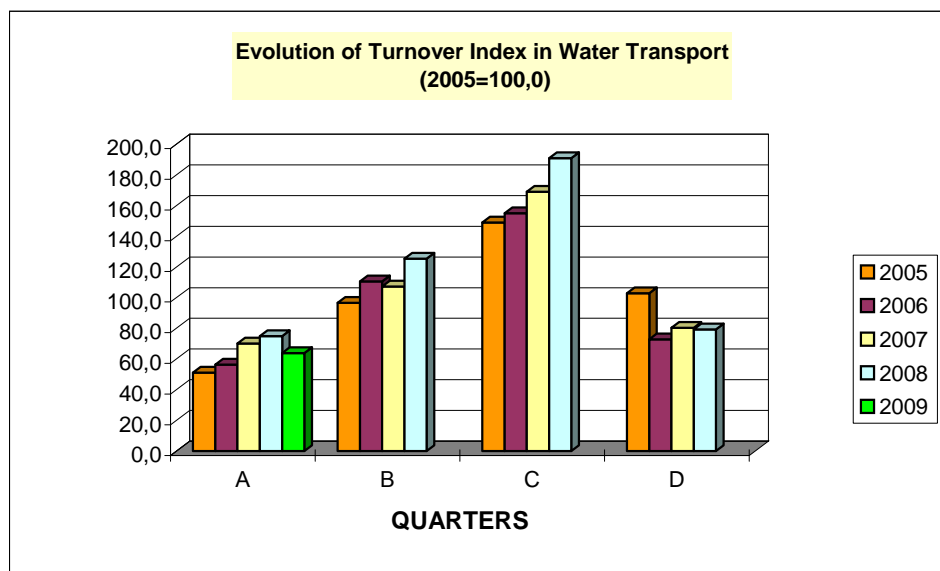


TABLE 3
Evolution of Turnover Index in Air Transport
(Nace rev. 2 div. 51 instead of Nace rev. 1.1 div. 62)
working days adjusted series
(2005=100,0)

Year - Quarter		Index	Year on Year growth rates (%)	Quarter on quarter growth rates (%)
2005	A	74,7	—	—
	B	108,1	—	44,6
	C	132,7	—	22,8
	D	84,5	—	-36,3
<i>Annual mean</i>		<i>100</i>		
2006	A	74,6	-0,1	-11,7
	B	113,8	5,3	52,5
	C	133,7	0,7	17,5
	D	102,9	21,7	-23,0
<i>Annual mean</i>		<i>106,2</i>	<i>6,2</i>	
2007	A	89,2	19,5	-13,3
	B	117,7	3,5	32,1
	C	145,8	9,1	23,8
	D	101,9	-1,0	-30,1
<i>Annual mean</i>		<i>113,7</i>	<i>7,0</i>	
2008	A	92,1	3,3	-9,6
	B	131,2	11,4	42,5
	C	153,6	5,4	17,1
	D	107,2	5,2	-30,2
<i>Annual mean</i>		<i>121,0</i>	<i>6,5</i>	
2009	A	94,9	3,0	-11,5

DIAGRAM 3

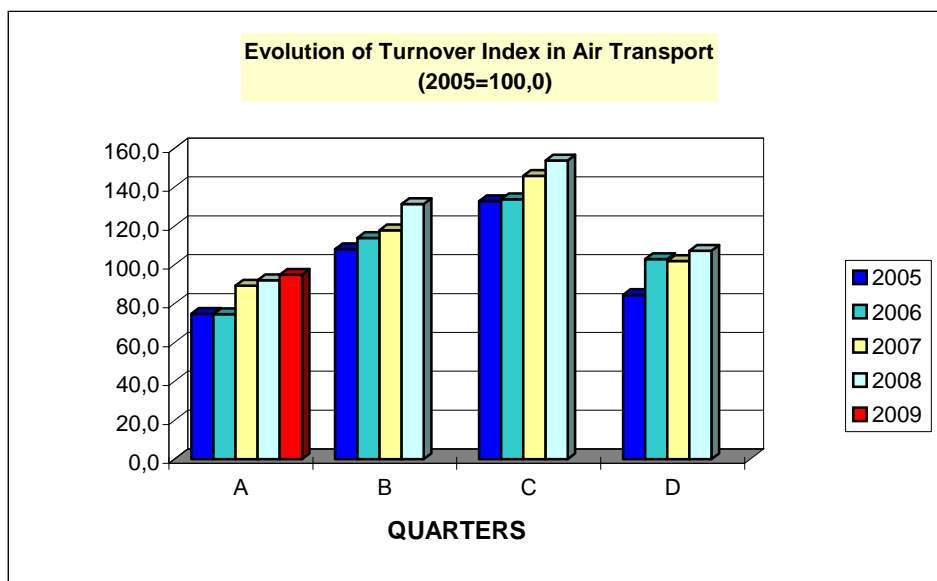


TABLE 4
Evolution of Turnover Index in Warehousing and Support Activities for Transportation
(Nace rev. 2 div. 52 instead of Nace rev. 1.1 div. 63)

working days adjusted series

(2005=100,0)

Year - Quarter		Index	Year on Year growth rates (%)	Quarter on quarter growth rates (%)
2005	A	72,1	—	—
	B	96,9	—	34,4
	C	113,2	—	16,8
	D	117,8	—	4,1
<i>Annual mean</i>		100		
2006	A	78,9	9,4	-33,0
	B	115,8	19,5	46,8
	C	116,0	2,5	0,2
	D	146,0	23,9	25,9
<i>Annual mean</i>		114,2	14,2	
2007	A	81,0	2,7	-44,5
	B	109,3	-5,6	34,9
	C	132,1	13,9	20,9
	D	127,7	-12,5	-3,3
<i>Annual mean</i>		112,5	-1,4	
2008	A	99,4	22,7	-22,2
	B	136,0	24,4	36,8
	C	137,5	4,1	1,1
	D	91,2	-28,6	-33,7
<i>Annual mean</i>		116,0	3,1	
2009	A	68,4	-31,2	-25,0

DIAGRAM 4

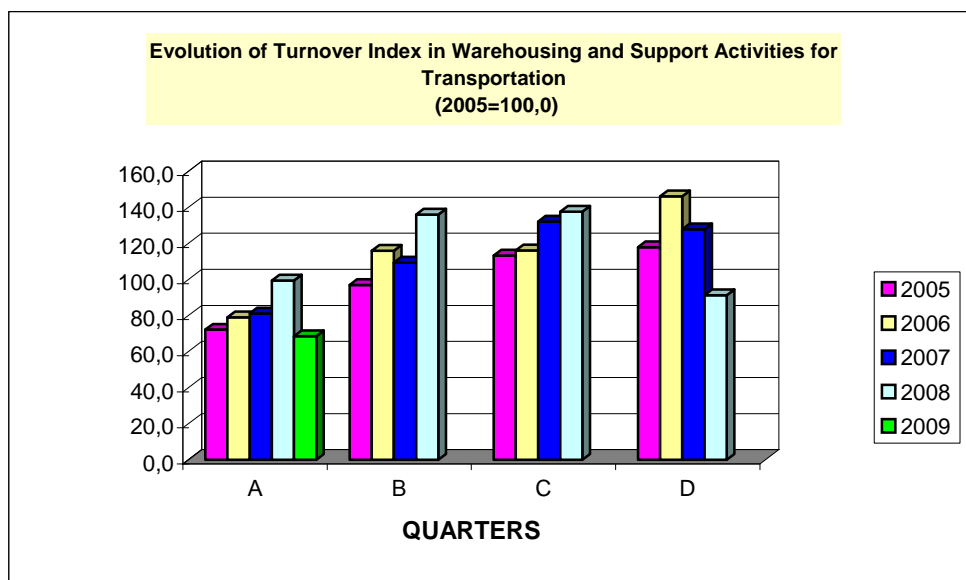


TABLE 5
Evolution of Turnover Index in Travel Agency, Tour Operator Reservation Service
and Related Activities
(Nace rev. 2 div. 79 instead of Nace rev. 1.1 div. 63)

working days adjusted series

(2005=100,0)

Year - Quarter		Index	Year on Year growth rates (%)	Quarter on quarter growth rates (%)
2005	A	78,1	—	—
	B	101,5	—	30,0
	C	106,5	—	4,9
	D	113,8	—	6,9
<i>Annual mean</i>		<i>100,0</i>		
2006	A	82,7	5,9	-27,3
	B	112,9	11,2	36,5
	C	124,5	16,9	10,3
	D	105,8	-7,0	-15,0
<i>Annual mean</i>		<i>106,5</i>	<i>6,5</i>	
2007	A	93,4	12,9	-11,7
	B	137,9	22,1	47,6
	C	151,7	21,8	10,0
	D	159,9	51,1	5,4
<i>Annual mean</i>		<i>135,7</i>	<i>27,5</i>	
2008	A	103,7	11,0	-35,1
	B	146,2	6,0	41,0
	C	163,3	7,6	11,7
	D	148,7	-7,0	-8,9
<i>Annual mean</i>		<i>140,5</i>	<i>3,5</i>	
2009	A	52,5	-49,4	-64,7

DIAGRAM 5

