



HELLENIC REPUBLIC



MINISTRY OF ECONOMY AND FINANCE



GENERAL SECRETARIAT OF
THE NATIONAL STATISTICAL SERVICE
OF GREECE

Piraeus, 16 December 2008

PRESS RELEASE

Turnover indices in Transport Sector¹

Third quarter 2008

The National Statistical Service of Greece publishes Turnover Indices in Transport Sector for the 3rd quarter 2008 with base year 2005 = 100.0, according to final data, adjusted for the actual number of working days.

Year on Year growth rates

- The Turnover Index in **land transport** in the 3rd quarter 2008 as compared to the 3rd quarter 2007 decreased by 3,0%, while the growth for the corresponding period of 2007 compared to 2006 was 27,7%.
- The Turnover Index in **sea and coastal transport** in the 3rd quarter 2008 as compared to the 3rd quarter 2007 increased by 12,9%, while the increase for the corresponding period of 2007 compared to 2006 was 9,0%.
- The Turnover Index in **air transport** in the 3rd quarter 2008 as compared to the 3rd quarter 2007 increased by 5,4%, while the growth for the corresponding period of 2007 compared to 2006 was 9,1%.
- The Turnover Index in **supporting and auxiliary transport activities, including activities of travel agencies**, in the 3rd quarter 2008 as compared to the 3rd quarter 2007 increased by 6,0%, while the growth for the corresponding period of 2007 compared to 2006 was 18,1%.

Quarter on Quarter growth rates

- The Turnover Index in **land transport** in the 3rd quarter 2008 as compared to the 2nd quarter 2008 decreased by 10,9%, while the increase for the corresponding period of 2007 was 2,0%.

- The Turnover Index in **sea and coastal transport** in the 3rd quarter 2008 as compared to the 2nd quarter 2008 increased by 52,3%, while the increase for the corresponding period of 2007 was 57,5%.
- The Turnover Index in **air transport** in the 3rd quarter 2008 as compared to the 2nd quarter 2008 increased by 17,1%, while the increase for the corresponding period of 2007 was 23,8%.
- The Turnover Index in **supporting and auxiliary transport activities, including activities of travel agencies**, in the 3rd quarter 2008 as compared to the 2nd quarter 2008 increased by 6,7%, while the increase for the corresponding period of 2007 was 14,8%.

The tables and the diagrams that follow present the evolution of the indices from 2005 onwards

¹ The compilation and publication of these indices in Transport Sector is based upon the requirements of the Council Regulation (EC) No 1165/98 concerning short-term statistics as well as the amendment Regulation 1158/2005 of the European Parliament and Council amending the Council Regulation (EC) No 1165/98.

The turnover indices in services are important business indicators, which show the evolution of the market for services.

The objective of these indices is to calculate the activity of the surveyed sector in value terms.

The Turnover comprises the totals invoiced by the observation unit during the reference period (quarter) and corresponds to the market sales of goods and services supplied to third parties. Subsidies on goods or services are also included. Turnover excludes VAT and other similar deductible taxes directly linked to turnover as well as all duties and taxes on the goods or services invoiced by the unit. Income classified as other operating income, financial income and extraordinary income in company accounts is also excluded from turnover.

The Turnover Indices in Transport Sector are compiled for the **NACE – Rev.1.1 division 60** – land transport, transport via pipe lines, **61** – water transport, **62** – air transport and **63** – supporting and auxiliary transport activities, activities of travel agencies.

For further information on data please contact

- Papadopoulou Zoi, tel. (0030)2104852056 (divisions 60,62,63)
- Goulas Vassileios, tel. (0030)2104852187 (division 61)

Division of Statistics on Trade and Services

Fax: (0030) 2104852398

E-mail: trade.services@statistics.gr

TABLE 1
Evolution of Turnover Index in Land Transport (div. 60)
working days adjusted series
(2005=100,0)

| Year - Quarter | | Index | Year on Year growth rates (%) | Quarter on quarter growth rates (%) |
|----------------|---|-------|-------------------------------|-------------------------------------|
| 2005 | A | 81,3 | — | — |
| | B | 101,1 | — | 24,4 |
| | C | 129,0 | — | 27,6 |
| | D | 88,6 | — | -31,3 |
| <i>Average</i> | | 100 | | |
| 2006 | A | 99,4 | 22,3 | 12,2 |
| | B | 141,5 | 40,0 | 42,3 |
| | C | 132,8 | 2,9 | -6,2 |
| | D | 121,9 | 37,5 | -8,2 |
| <i>Average</i> | | 123,9 | 23,9 | |
| 2007 | A | 123,5 | 24,3 | 1,4 |
| | B | 166,2 | 17,5 | 34,6 |
| | C | 169,6 | 27,7 | 2,0 |
| | D | 126,4 | 3,7 | -25,5 |
| <i>Average</i> | | 146,4 | 18,2 | |
| 2008 | A | 135,4 | 9,6 | 7,1 |
| | B | 184,7 | 11,1 | 36,4 |
| | C | 164,6 | -3,0 | -10,9 |
| | D | | | |
| <i>Average</i> | | | | |

DIAGRAM

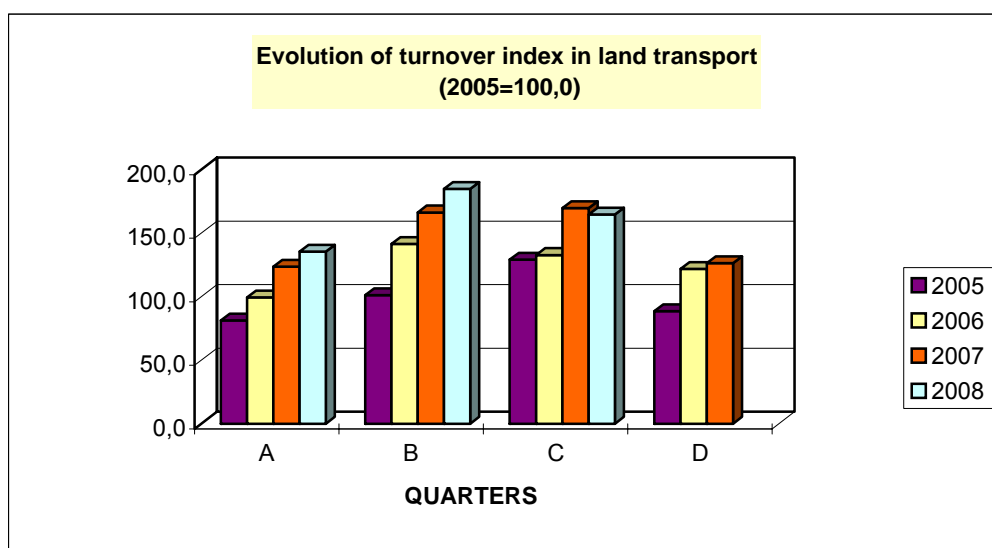


TABLE 2

Evolution of Turnover Index in Sea and Coastal Transport (div. 61)

working days adjusted series

(2005=100,0)

| Year - Quarter | | Index | Year on Year growth rates (%) | Quarter on quarter growth rates (%) |
|----------------|---|--------------|-------------------------------|-------------------------------------|
| 2005 | A | 51,2 | — | — |
| | B | 96,8 | — | 88,9 |
| | C | 149,1 | — | 54,1 |
| | D | 102,9 | — | -31,0 |
| <i>Average</i> | | <i>100</i> | | |
| 2006 | A | 56,4 | 10,1 | -45,2 |
| | B | 110,5 | 14,2 | 96,1 |
| | C | 155,2 | 4,1 | 40,4 |
| | D | 72,9 | -29,1 | -53,0 |
| <i>Average</i> | | <i>98,8</i> | <i>-1,2</i> | |
| 2007 | A | 70,1 | 24,4 | -3,8 |
| | B | 107,4 | -2,9 | 53,1 |
| | C | 169,2 | 9,0 | 57,5 |
| | D | 80,4 | 10,3 | -52,5 |
| <i>Average</i> | | <i>106,8</i> | <i>8,1</i> | |
| 2008 | A | 75,0 | 6,9 | -6,7 |
| | B | 125,4 | 16,8 | 67,2 |
| | C | 191,0 | 12,9 | 52,3 |
| | D | | | |
| <i>Average</i> | | | | |

DIAGRAM

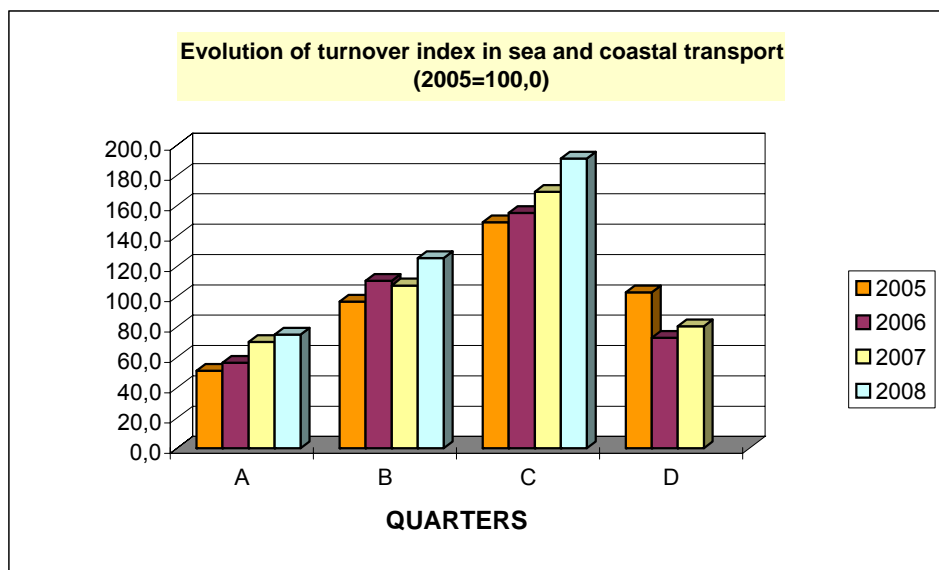


TABLE 3
Evolution of Turnover Index in Air Transport (div. 62)
working days adjusted series
(2005=100,0)

| Year - Quarter | Index | Year on Year growth rates (%) | Quarter on quarter growth rates (%) |
|----------------|--------------|-------------------------------|-------------------------------------|
| 2005 | A | 74,7 | — |
| | B | 108,1 | 44,6 |
| | C | 132,7 | 22,8 |
| | D | 84,5 | -36,3 |
| <i>Average</i> | <i>100</i> | | |
| 2006 | A | 74,6 | -0,1 |
| | B | 113,8 | 5,3 |
| | C | 133,7 | 0,7 |
| | D | 102,9 | 21,7 |
| <i>Average</i> | <i>106,2</i> | <i>6,2</i> | |
| 2007 | A | 89,2 | 19,5 |
| | B | 117,7 | 3,5 |
| | C | 145,8 | 9,1 |
| | D | 101,9 | -1,0 |
| <i>Average</i> | <i>113,7</i> | <i>7,0</i> | |
| 2008 | A | 92,1 | 3,3 |
| | B | 131,2 | 11,4 |
| | C | 153,6 | 5,4 |
| | D | | |
| <i>Average</i> | | | |

DIAGRAM

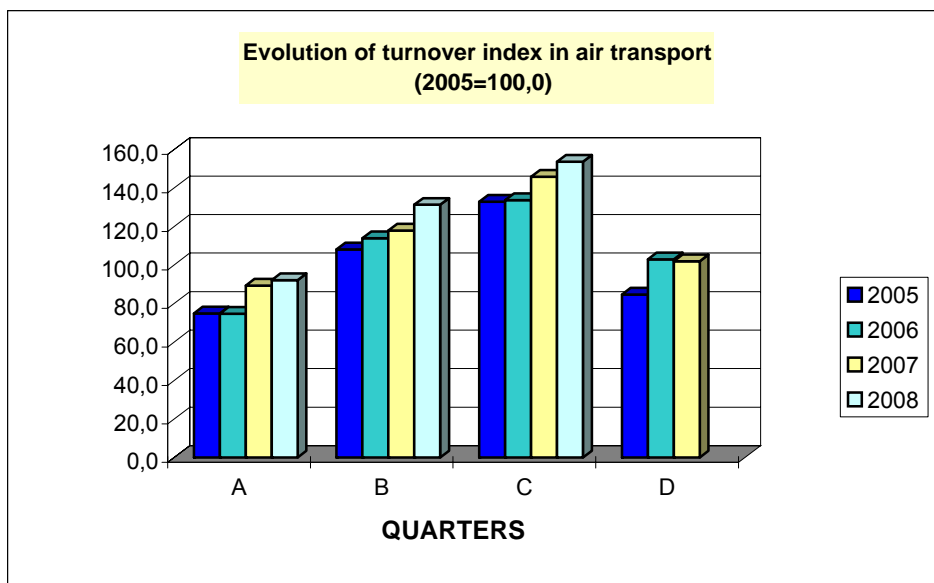


TABLE 4
Evolution of Turnover Index in Supporting and Auxiliary Transport Activities;
Activities of Travel Agencies (div. 63)

working days adjusted series

(2005=100,0)

| Year - Quarter | | Index | Year on Year growth rates (%) | Quarter on quarter growth rates (%) |
|----------------|---|--------------|-------------------------------|-------------------------------------|
| 2005 | A | 75,1 | — | — |
| | B | 99,2 | — | 32,1 |
| | C | 109,8 | — | 10,7 |
| | D | 115,8 | — | 5,5 |
| <i>Average</i> | | <i>100</i> | | |
| 2006 | A | 80,8 | 7,6 | -30,2 |
| | B | 114,4 | 15,3 | 41,5 |
| | C | 120,2 | 9,5 | 5,1 |
| | D | 125,8 | 8,6 | 4,6 |
| <i>Average</i> | | <i>110,3</i> | <i>10,3</i> | |
| 2007 | A | 87,3 | 8,0 | -30,6 |
| | B | 123,7 | 8,2 | 41,7 |
| | C | 142,0 | 18,1 | 14,8 |
| | D | 143,9 | 14,4 | 1,3 |
| <i>Average</i> | | <i>124,2</i> | <i>12,6</i> | |
| 2008 | A | 101,5 | 16,3 | -29,5 |
| | B | 141,1 | 14,1 | 39,0 |
| | C | 150,5 | 6,0 | 6,7 |
| | D | | | |
| <i>Average</i> | | | | |

DIAGRAM

