



HELLENIC REPUBLIC



MINISTRY OF ECONOMY AND FINANCE



GENERAL SECRETARIAT OF  
THE NATIONAL STATISTICAL SERVICE  
OF GREECE

Piraeus, 17 March 2008

# PRESS RELEASE

## Turnover indices in Transport Sector<sup>1</sup>

### Fourth quarter 2007

The National Statistical Service of Greece publishes Turnover Indices in Transport Sector for the 4<sup>th</sup> quarter 2007 with base year 2005 = 100.0, according to final data, adjusted for the actual number of working days.

#### Year on Year growth rates

- The Turnover Index in **land transport** in the 4<sup>th</sup> quarter 2007 as compared to the 4<sup>th</sup> quarter 2006 increased by 3,7%, while the growth for the corresponding period of 2006 compared to 2005 was 37,5%.
- The Turnover Index in **sea and coastal transport** in the 4<sup>th</sup> quarter 2007 as compared to the 4<sup>th</sup> quarter 2006 increased by 10,3%, while for the corresponding period of 2006 compared to 2005 decreased by 29,1%.
- The Turnover Index in **air transport** in the 4<sup>th</sup> quarter 2007 as compared to the 4<sup>th</sup> quarter 2006 decreased by 1,0%, while for the corresponding period of 2006 compared to 2005 increased by 21,7%.
- The Turnover Index in **supporting and auxiliary transport activities, including activities of travel agencies**, in the 4<sup>th</sup> quarter 2007 as compared to the 4<sup>th</sup> quarter 2006 increased by 14,4%, while the growth for the corresponding period of 2006 compared to 2005 was 8,6%.

#### Quarter on Quarter growth rates

- The Turnover Index in **land transport** in the 4<sup>th</sup> quarter 2007 as compared to the 3<sup>rd</sup> quarter 2007 decreased by 25,5%, while the decrease for the corresponding period of 2006 was 8,2%.

- The Turnover Index in **sea and coastal transport** in the 4<sup>th</sup> quarter 2007 as compared to the 3<sup>rd</sup> quarter 2007 decreased by 52,5%, while the decrease for the corresponding period of 2006 was 53,0%.
- The Turnover Index in **air transport** in the 4<sup>th</sup> quarter 2007 as compared to the 3<sup>rd</sup> quarter 2007 decreased by 30,1%, while the decrease for the corresponding period of 2006 was 23,0%.
- The Turnover Index in **supporting and auxiliary transport activities, including activities of travel agencies**, in the 4<sup>th</sup> quarter 2007 as compared to the 3<sup>rd</sup> quarter 2007 increased by 1,3%, while the growth for the corresponding period of 2006 was 4,6%.

The tables and the diagrams that follow present the evolution of the indices from 2005 onwards

---

<sup>1</sup> The compilation and publication of these new indices in Transport Sector is based upon the requirements of the Council Regulation (EC) No 1165/98 concerning short-term statistics as well as the amendment Regulation 1158/2005 of the European Parliament and Council amending the Council Regulation (EC) No 1165/98.

The **turnover indices in services are important business indicators which show the evolution of the market for services**.

The objective of **these indices** is to **calculate the activity of the surveyed sector in value terms**.

The Turnover comprises the totals invoiced (excluding VAT, other similar deductive taxes, subsidies and other operating income) by the observation units during the reference period (quarter). This corresponds to the market sales of services supplied to third parties.

The Turnover Indices in Transport Sector are compiled for the **NACE – Rev.1.1 division 60** – land transport, transport via pipe lines, **61** – water transport, **62** – air transport and **63** – supporting and auxiliary transport activities, activities of travel agencies.

---

For further information on data please contact

- Papadopoulou Zoi, tel. (0030)2104852056 (divisions 60,62,63)
- Goulas Vassileios, tel. (0030)2104852187 (division 61)

Division of Statistics on Trade and Services

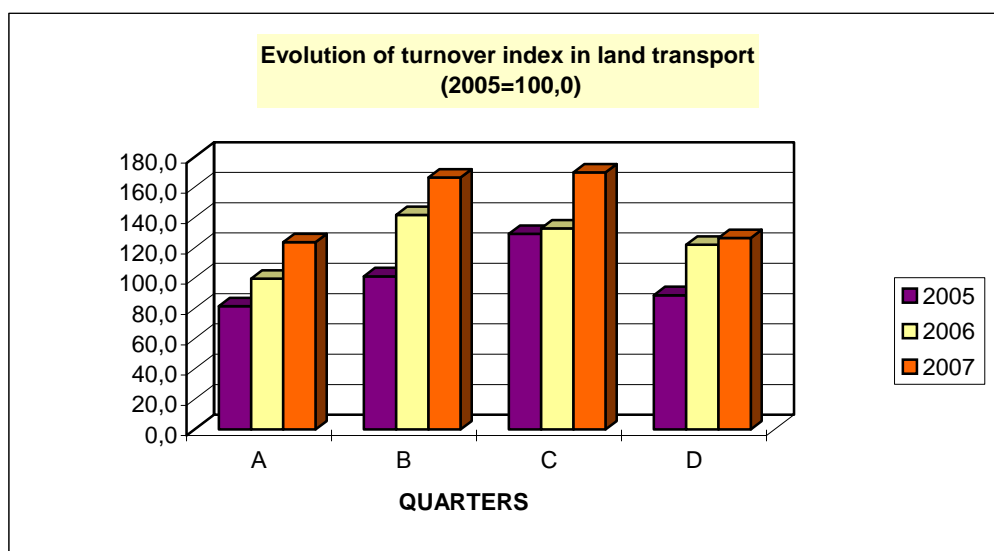
Fax: (0030) 2104852398

E-mail: trade.services@statistics.gr

**TABLE 1**  
**Evolution of Turnover Index in Land Transport (div. 60)**  
*working days adjusted series*  
**(2005=100,0)**

Year - Quarter		Index	Year on Year growth rates (%)	Quarter on quarter growth rates (%)
2005	A	81,3	—	—
	B	101,1	—	24,4
	C	129,0	—	27,6
	D	88,6	—	-31,3
<i>Average</i>		100		
2006	A	99,4	22,3	12,2
	B	141,5	40,0	42,3
	C	132,8	2,9	-6,2
	D	121,9	37,5	-8,2
<i>Average</i>		123,9	23,9	
2007	A	123,5	24,3	1,4
	B	166,2	17,5	34,6
	C	169,6	27,7	2,0
	D	126,4	3,7	-25,5
<i>Average</i>		146,4	18,2	

**DIAGRAM**



**TABLE 2**

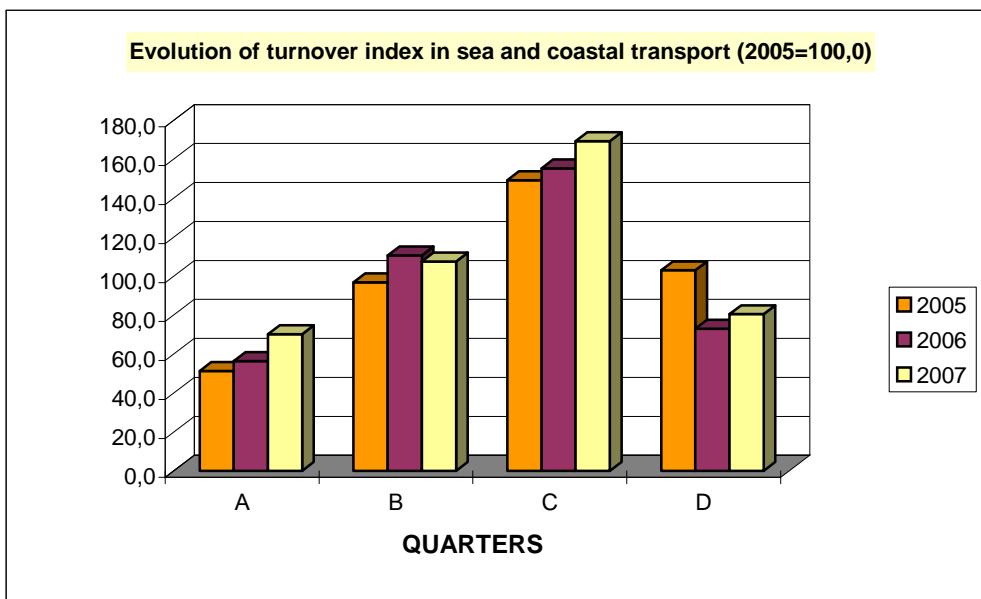
**Evolution of Turnover Index in Sea and Coastal Transport (div. 61)**

*working days adjusted series*

**(2005=100,0)**

Year - Quarter		Index	Year on Year growth rates (%)	Quarter on quarter growth rates (%)
2005	A	51,2	—	—
	B	96,8	—	88,9
	C	149,1	—	54,1
	D	102,9	—	-31,0
<i>Average</i>		<i>100</i>		
2006	A	56,4	10,1	-45,2
	B	110,5	14,2	96,1
	C	155,2	4,1	40,4
	D	72,9	-29,1	-53,0
<i>Average</i>		<i>98,8</i>	<i>-1,2</i>	
2007	A	70,1	24,4	-3,8
	B	107,4	-2,9	53,1
	C	169,2	9,0	57,5
	D	80,4	10,3	-52,5
<i>Average</i>		<i>106,8</i>	<i>8,1</i>	

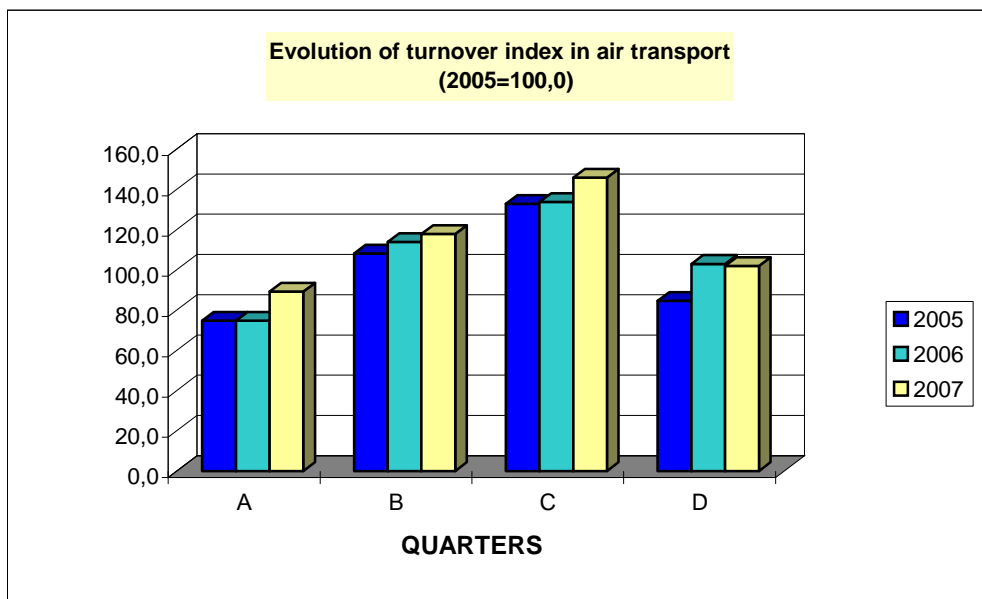
**DIAGRAM**



**TABLE 3**  
**Evolution of Turnover Index in Air Transport (div. 62)**  
*working days adjusted series*  
**(2005=100,0)**

Year - Quarter		Index	Year on Year growth rates (%)	Quarter on quarter growth rates (%)
2005	A	74,7	—	—
	B	108,1	—	44,6
	C	132,7	—	22,8
	D	84,5	—	-36,3
<i>Average</i>		100		
2006	A	74,6	-0,1	-11,7
	B	113,8	5,3	52,5
	C	133,7	0,7	17,5
	D	102,9	21,7	-23,0
<i>Average</i>		106,2	6,2	
2007	A	89,2	19,5	-13,3
	B	117,7	3,5	32,1
	C	145,8	9,1	23,8
	D	101,9	-1,0	-30,1
<i>Average</i>		113,7	7,0	

**DIAGRAM**



**TABLE 4**  
**Evolution of Turnover Index in Supporting and Auxiliary Transport**  
**Activities;Activities of Travel Agencies (div. 63)**

*working days adjusted series*

**(2005=100,0)**

Year - Quarter		Index	Year on Year growth rates (%)	Quarter on quarter growth rates (%)
2005	A	75,1	—	—
	B	99,2	—	32,1
	C	109,8	—	10,7
	D	115,8	—	5,5
<i>Average</i>		<i>100</i>		
2006	A	80,8	7,6	-30,2
	B	114,4	15,3	41,5
	C	120,2	9,5	5,1
	D	125,8	8,6	4,6
<i>Average</i>		<i>110,3</i>	<i>10,3</i>	
2007	A	87,3	8,0	-30,6
	B	123,7	8,2	41,7
	C	142,0	18,1	14,8
	D	143,9	14,4	1,3
<i>Average</i>		<i>124,2</i>	<i>12,6</i>	

**DIAGRAM**

