



**HELLENIC REPUBLIC
MINISTRY OF FINANCE**



**GENERAL SECRETARIAT OF
THE NATIONAL STATISTICAL SERVICE
OF GREECE**

Piraeus, 30 December 2009

PRESS RELEASE

**Turnover Index in Retail Trade^{1, 2,3}
October 2009**

According to the provisional results, the turnover index in retail trade as it was published until December 2008, except automotive fuel, in October 2009 as compared to October 2008, recorded a fall of 8,4% at current prices (in nominal terms) (Table 1).

Accordingly the turnover index in retail trade, including automotive fuel, in October 2009 as compared to October 2008, recorded a fall of 14,0% at current prices (in nominal terms) (Table 1).

The food sector turnover in retail trade, in October 2009 as compared to October 2008, decreased by 3,6% in nominal terms while the automotive fuel sector decreased by 43,1% and the non-food sector (except automotive fuel) decreased by 12,3% (Table 1.I).

¹ The turnover index in retail trade is released from January 1995 as first reference month revised and re-based in 2005=100,0. The revision of the index was considered necessary given that during the time period intervening between this and the previous revision new trade centers were created and significant changes in the structure of trade occurred. The revision of the turnover index in retail trade, with base year 2005=100,0, is done in the framework of the Short –Term Statistics (STS) Council Regulation (EC) no 1165/98 .

² At the same time the retail trade index adjusted to the new statistical classification of economic activities NACE Rev.2(Regulation 1893/2006). According to the new classification the automotive fuel included to the retail trade branch instead the special branch of “ Motor trade, maintenance and repair of motor vehicles and motorcycles “ of the previous classification NACE Rev.1 .

³ All figures in this release are based on data adjusted for working days.

More specifically, the turnover in retail trade, including automotive fuel, decrease by 14,0% at current prices in October 2009 as compared to October 2008, was derived by store category from the following (Table 1.II):

- The supermarkets turnover decrease of 3,9%
- The department stores turnover decrease of 15,3%
- The automotive fuel turnover decrease of 43,1%
- The food, beverages and tobacco turnover decrease of 2,0%
- The pharmaceutical products, cosmetics turnover increase of 8,5%
- The clothing and footwear turnover decrease of 3,5%
- The furniture, electrical equipment, household equipment turnover decrease of 14,0%
- The books, stationery, other goods turnover decrease of 15,6%
- The retail sale not in stores turnover decrease of 15,4%

Retail Trade Volume Index

The volume of retail trade (i.e. turnover in retail trade at constant prices) as it was published until December 2008, except automotive fuel, decreased by 9,9% in October 2009, as compared to October 2008 (Table 1).

Accordingly, the retail trade volume index (i.e. turnover in retail trade at constant prices), including automotive fuel, in October 2009 as compared to October 2008,decreased by 15,3% (Table 1).

The food sector retail trade in real terms, in October 2009 as compared to October 2008, decreased by 4,8% while the automotive fuel sector decreased by 43,5% and the non-food sector (except automotive fuel) decreased by 14,2% (Table 1.I).

More specifically, the turnover in retail trade, including automotive fuel, decrease by 15,3% at constant prices, in October 2009 as compared to October 2008, was derived by store category from the following (Table 1.II):

- The supermarkets volume of sales decrease of 5,2%

- The department stores volume of sales decrease of 16,4%
- The automotive fuel volume of sales decrease of 43,5%
- The food, beverages and tobacco volume of sales decrease of 3,2%
- The pharmaceutical products, cosmetics volume of sales increase of 6,8%
- The clothing and footwear volume of sales decrease of 6,0%
- The furniture, electrical equipment, household equipment volume of sales decrease of 15,1%
- The books, stationery, other goods volume of sales decrease of 17,7%

TABLE 1

Annual rates of change of turnover index and volume index in retail trade

Retail Trade Business	2005=100,0					
	Turnover Index			Volume Index		
	Index October 2009*	Index October 2008	Annual rate (%)	Index October 2009*	Index October 2008	Annual rate (%)
Overall Index	112,6	131,0	-14,0	98,8	116,6	-15,3
Overall Index (except automotive fuel)**	111,1	121,3	-8,4	97,7	108,4	-9,9
I. Main sectors						
Food sector	119,3	123,7	-3,6	102,9	108,1	-4,8
Automotive fuel sector	102,2	179,6	-43,1	87,9	155,6	-43,5
Non-food sector (except automotive fuel)	105,0	119,8	-12,3	94,0	109,5	-14,2
II. Specialized store categories						
Supermarkets	122,7	127,7	-3,9	107,2	113,1	-5,2
Department stores	116,4	137,5	-15,3	107,5	128,6	-16,4
Automotive fuel	102,2	179,6	-43,1	87,9	155,6	-43,5
Food-beverages-tobacco	102,7	104,7	-2,0	88,6	91,5	-3,2
Pharmaceutical products, cosmetics	117,0	107,9	8,5	110,1	103,0	6,8
Clothing and footwear	116,5	120,7	-3,5	99,6	106,0	-6,0
Furniture, electrical equipment, household equipment	103,5	120,3	-14,0	99,8	117,5	-15,1
Books, stationery, other goods	88,2	104,4	-15,6	80,3	97,6	-17,7
Retail sale not in stores	109,3	129,2	-15,4	:	:	:

* Provisional data

** Corresponds to the overall index in retail trade which was published by the NSSG until December 2008

: Not available data

TABLE 2
Monthly evolution of the turnover in retail trade at current prices

(2005=100,0)

Year-month	Overall Index		Overall Index (except automotive fuel)**		Food sector		Automotive fuel sector		Non –food sector (except automotive fuel)	
	Index	Annual rate (%)	Index	Annual rate (%)	Index	Annual rate (%)	Index	Annual rate (%)	Index	Annual rate (%)
2008 IX	118,7	2,4	117,8	1,4	122,3	2,3	107,3	5,5	114,6	0,7
X	131,0	10,0	121,3	3,8	123,7	7,2	179,6	45,5	119,8	1,2
XI	122,0	-0,3	117,4	-0,9	123,1	5,2	136,0	-2,4	113,3	-5,6
XII	142,9	-7,3	144,5	-4,0	147,5	-2,2	110,7	-33,1	142,6	-5,4
2009 I	109,2	-10,1	108,2	-2,8	115,3	-0,1	96,6	-50,6	102,9	-4,9
II	107,1	-12,4	105,6	-5,6	115,8	-1,1	97,8	-51,0	97,9	-9,3
III*	103,3	-17,9	101,7	-11,2	113,5	-8,2	95,2	-54,8	92,6	-13,7
IV*	114,8	-14,2	115,1	-9,8	126,5	-5,0	93,5	-42,1	106,5	-13,8
V*	107,1	-13,9	107,8	-10,4	120,7	-3,5	84,4	-37,6	98,0	-16,2
VI*	109,0	-13,4	108,4	-11,7	118,4	-5,4	94,0	-27,1	100,9	-16,8
VII*	111,5	-9,1	110,9	-7,0	117,4	0,2	95,6	-25,4	106,4	-12,3
VIII*	106,5	-3,1	103,9	-3,5	120,9	-0,9	103,9	-5,0	90,5	-6,3
IX*	109,5	-7,7	108,7	-7,7	116,5	-4,7	95,4	-11,0	102,9	-10,2
X*	112,6	-14,0	111,1	-8,4	119,3	-3,6	102,2	-43,1	105,0	-12,3

* Provisional data

** Corresponds to the overall index in retail trade which was published by the NSSG until December 2008

TABLE 3

Monthly evolution of the turnover in retail trade in real terms

(2005=100,0)

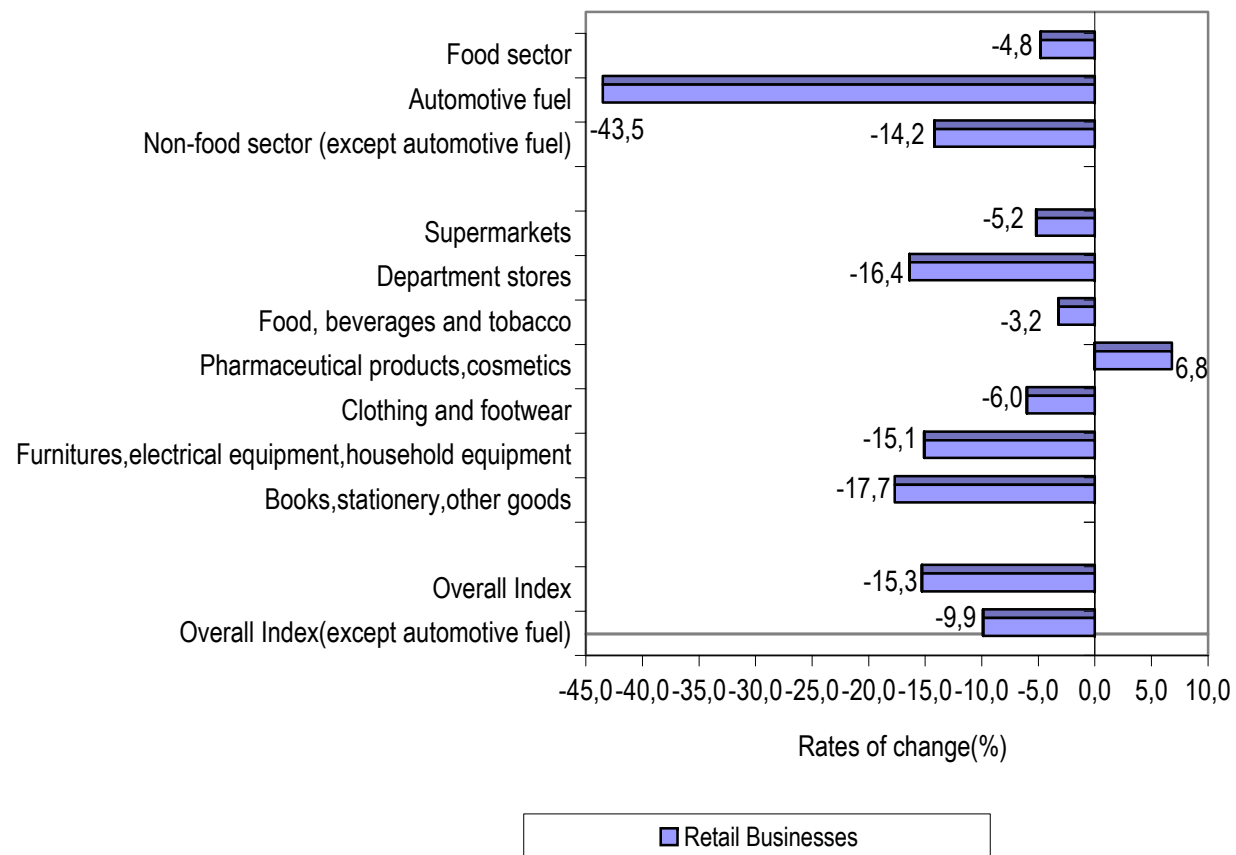
Year-month	Overall Index		Overall Index (except automotive fuel)**		Food sector		Automotive fuel sector		Non –food sector (except automotive fuel)	
	Index	Annual rate (%)	Index	Annual rate (%)	Index	Annual rate (%)	Index	Annual rate (%)	Index	Annual rate (%)
2008 IX	105,8	-1,8	106,5	-1,6	108,8	-1,1	84,1	-7,8	105,5	-2,0
X	116,6	6,5	108,4	0,5	108,1	3,1	155,6	40,9	109,5	-1,4
XI	108,9	-2,6	104,2	-4,5	106,2	0,1	131,1	9,5	103,5	-8,1
XII	129,0	-8,4	128,4	-7,1	127,9	-5,9	118,3	-17,6	130,1	-7,8
2009 I	99,7	-10,9	97,4	-5,9	98,6	-3,9	102,4	-38,2	97,3	-7,7
II	99,5	-13,3	97,1	-8,4	98,6	-4,6	99,8	-40,7	97,3	-11,9
III*	91,8	-18,7	89,3	-13,7	96,3	-11,6	96,0	-45,2	84,1	-15,8
IV*	101,4	-15,0	100,6	-12,3	106,4	-8,2	91,1	-31,1	96,6	-16,0
V*	93,9	-14,5	93,9	-13,0	101,3	-7,2	79,2	-23,9	88,4	-18,2
VI*	95,8	-14,2	95,2	-14,5	101,0	-9,4	83,5	-12,6	91,0	-18,7
VII*	99,8	-10,2	99,7	-9,9	101,1	-4,0	82,3	-13,6	99,6	-14,4
VIII*	97,2	-4,5	95,9	-5,8	105,2	-3,8	85,9	1,5	88,2	-8,7
IX*	96,4	-8,8	95,9	-10,0	100,7	-7,4	81,4	-3,3	92,7	-12,1
X*	98,8	-15,3	97,7	-9,9	102,9	-4,8	87,9	-43,5	94,0	-14,2

* Provisional data

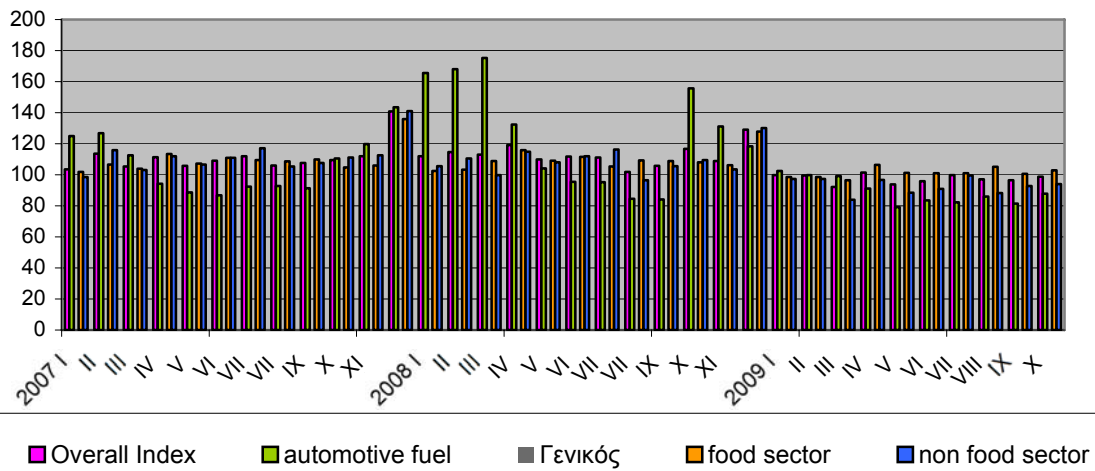
** Corresponds to the overall index in retail trade which was published by the NSSG until December 2008

DIAGRAMS

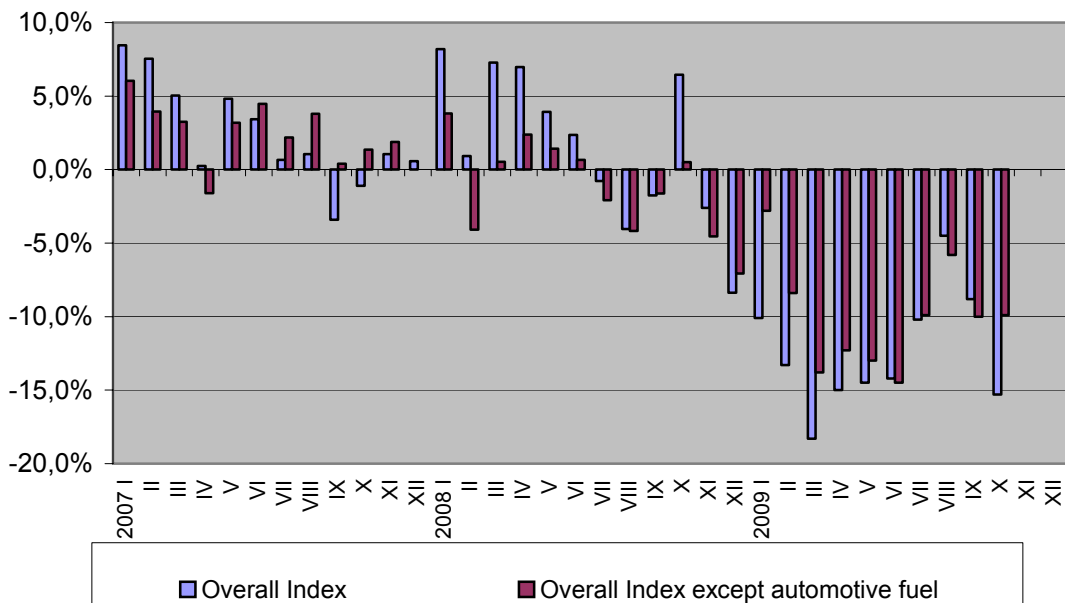
Annual rates of change (%) of the volume index in retail trade , between October 2009 and October 2008.



Monthly evolution of the volume index in retail trade
2005=100,0



Annual rates of change between the overall volume index including automotive fuel and the overall volume index except automotive fuel, 2007-2009(October)



For further information on data:

Andriana Dafni
Economic and Short-Term Indicators Division
Tel: 0030 210 4852127, 0030 210 4852717
Fax: 0030 210 4852729
e-mail : andrdafni@statistics.gr , ret.sal@statistics.gr