



HELLENIC REPUBLIC



HELLENIC STATISTICAL AUTHORITY

Piraeus, 12 October 2012

## PRESS RELEASE

### INPUT AND OUTPUT PRICE INDICES IN AGRICULTURE – LIVESTOCK: August 2012

The evolution of the Input and Output Price Indices in Agriculture – Livestock, with base year 2005=100.0, according to provisional data, is as follows:

The Output Price Index in Agriculture and Livestock (excluding subsidies) increased by 0.8% in August 2012, compared with August 2011. A year ago, the index decreased by 1.8% (Table 1).

The Output Price Index in August 2012, compared with July 2012, decreased by 5.5%. A year ago, the index decreased by 6.3% (Table 2).

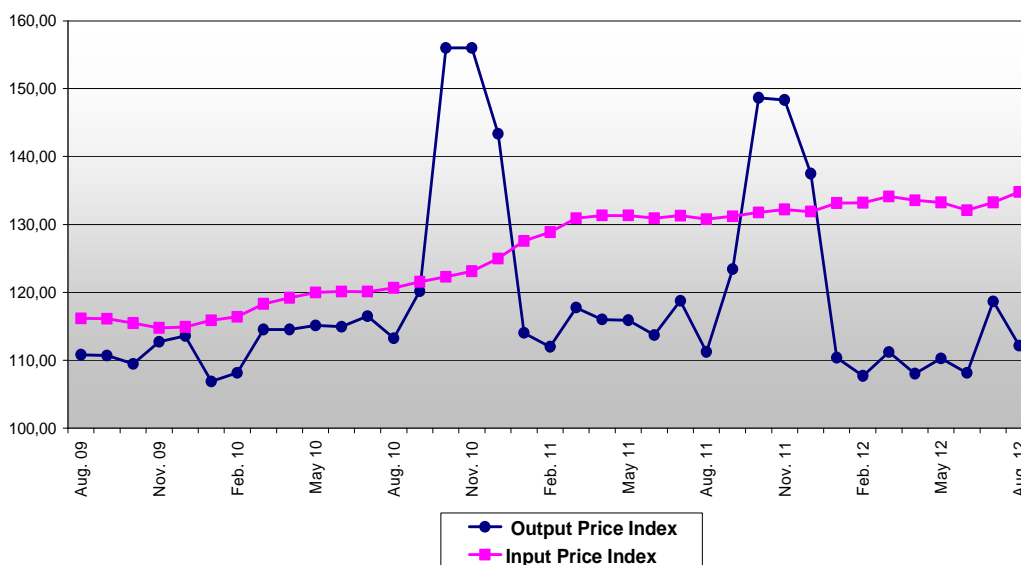
The twelve-month weighted average index, from September 2011 to August 2012, compared with the same index of the period from September 2010 to August 2011 decreased by 3.6%. A year ago, the twelve-month weighted average index increased by 14.3% (Table 3).

The Input Price Index in Agriculture and Livestock increased by 3.1% in August 2012, compared with August 2011. A year ago, the index increased by 8.4% (Table 4).

The Input Price Index in August 2012, compared with July 2012, increased by 1.2%. A year ago, the index decreased by 0.4% (Table 5).

The twelve-month average index, from September 2011 to August 2012, compared with the same index of the period from September 2010 to August 2011 increased by 3.9%. A year ago, the twelve-month average index increased by 8.7% (Table 6).

Evolution of Input and Output Price Indices in Agriculture - Livestock (2005=100.0)



Information:

Economic and Short-Term Indices Division

Wholesale Prices and Price Indices Section

Kossova Theodora  
Tel: 0030 213 1352745  
Fax: 0030 213 1352714

**Table 1: Output Price Indices in Agricultural and Livestock Production – Annual changes****Base year: 2005=100.0**

| Code   | Main groups  | Weights | August |       |       | Change (%) |           |
|--------|--|---------|--------|-------|-------|------------|-----------|
|        |  |         | 2012   | 2011  | 2010  | 2012/2011  | 2011/2010 |
| 140000 | AGRICULTURAL GOODS OUTPUT (100000+130000). including fruits (060000) and vegetables (040000) | 100.000 | 112.1  | 111.2 | 113.2 | 0.8        | -1.8      |
| 141000 | AGRICULTURAL GOODS OUTPUT (101000+130000). excluding fruits (060000) and vegetables (040000) | 67.214  | 116.8  | 117.1 | 110.6 | -0.3       | 5.9       |
| 100000 | CROP OUTPUT (010000 TO 090000). including fruits (060000) and vegetables (040000)            | 71.504  | 109.8  | 109.5 | 113.0 | 0.3        | -3.1      |
| 101000 | CROP OUTPUT (010000 TO 090000). excluding fruits (060000) and vegetables (040000)            | 38.718  | 113.5  | 115.9 | 108.7 | -2.0       | 6.6       |
| 010000 | Cereals (including seeds)  | 6.952   | 158.0  | 150.4 | 112.1 | 5.1        | 34.1      |
| 020000 | Industrial Crops   | 13.977  | 272.6  | 272.3 | 303.4 | 0.1        | -10.3     |
| 030000 | Forage Plants  | 3.293   | 117.8  | 115.4 | 117.9 | 2.1        | -2.2      |
| 040000 | Vegetables and Horticultural Products  | 17.827  | 105.3  | 101.8 | 124.4 | 3.4        | -18.1     |
| 050000 | Potatoes (including seeds)   | 2.762   | 105.3  | 116.4 | 115.4 | -9.5       | 0.8       |
| 060000 | Fruits   | 14.959  | 109.3  | 108.3 | 107.3 | 0.9        | 0.9       |
| 070000 | Wine (incl. must)  | 288     | 121.0  | 113.6 | 113.0 | 6.5        | 0.5       |
| 080000 | Olive Oil  | 11.428  | 66.0   | 73.5  | 72.7  | -10.3      | 1.1       |
| 090000 | Other Crop Products  | 18      | 112.2  | 115.2 | 105.5 | -2.6       | 9.2       |
| 130000 | ANIMAL OUTPUT (110000+120000)  | 28.496  | 123.2  | 119.5 | 114.3 | 3.0        | 4.6       |
| 110000 | Animals  | 13.786  | 118.1  | 116.6 | 114.8 | 1.2        | 1.6       |
| 120000 | Animal Products  | 14.710  | 129.7  | 123.3 | 113.5 | 5.2        | 8.6       |

Note:

1. The indices are calculated with infinite decimal figures and are rounded up to one decimal figure when published.
2. Percentage changes are calculated on the basis of the indices with infinite decimal figure and are rounded up to one decimal figure when published

**Table 2: Output Price Indices in Agricultural and Livestock Production – Monthly changes**

**Base year: 2005=100.0**

| Code   | Main groups  | Weights | August 2012 | July 2012 | Δ (%) | August 2011 | July 2011 | Δ (%) |
|--------|--|---------|-------------|-----------|-------|-------------|-----------|-------|
| 140000 | AGRICULTURAL GOODS OUTPUT (100000+130000). including fruits (060000) and vegetables (040000) | 100.000 | 112.1       | 118.7     | -5.5  | 111.2       | 118.8     | -6.3  |
| 141000 | AGRICULTURAL GOODS OUTPUT (101000+130000). excluding fruits (060000) and vegetables (040000) | 67.214  | 116.8       | 126.7     | -7.8  | 117.1       | 130.8     | -10.5 |
| 100000 | CROP OUTPUT (010000 TO 090000). including fruits (060000) and vegetables (040000)            | 71.504  | 109.8       | 117.9     | -6.9  | 109.5       | 118.8     | -7.9  |
| 101000 | CROP OUTPUT (010000 TO 090000). excluding fruits (060000) and vegetables (040000)            | 38.718  | 113.5       | 128.7     | -11.8 | 115.9       | 136.9     | -15.3 |
| 010000 | Cereals (including seeds)  | 6.952   | 158.0       | 148.5     | 6.4   | 150.4       | 151.3     | -0.6  |
| 020000 | Industrial Crops   | 13.977  | 272.6       | 274.0     | -0.5  | 272.3       | 274.0     | -0.6  |
| 030000 | Forage Plants  | 3.293   | 117.8       | 188.7     | -37.6 | 115.4       | 202.7     | -43.1 |
| 040000 | Vegetables and Horticultural Products  | 17.827  | 105.3       | 106.1     | -0.7  | 101.8       | 105.0     | -3.0  |
| 050000 | Potatoes (including seeds)   | 2.762   | 105.3       | 99.4      | 6.0   | 116.4       | 112.4     | 3.6   |
| 060000 | Fruits   | 14.959  | 109.3       | 116.2     | -6.0  | 108.3       | 105.9     | 2.3   |
| 070000 | Wine (incl. must)  | 288     | 121.0       | 121.7     | -0.6  | 113.6       | 113.6     | 0.0   |
| 080000 | Olive Oil  | 11.428  | 66.0        | 65.6      | 0.6   | 73.5        | 73.3      | 0.3   |
| 090000 | Other Crop Products  | 18      | 112.2       | 112.0     | 0.2   | 115.2       | 109.9     | 4.8   |
| 130000 | ANIMAL OUTPUT (110000+120000)  | 28.496  | 123.2       | 122.5     | 0.5   | 119.5       | 118.3     | 1.0   |
| 110000 | Animals  | 13.786  | 118.1       | 117.2     | 0.7   | 116.6       | 115.7     | 0.8   |
| 120000 | Animal Products  | 14.710  | 129.7       | 130.3     | -0.4  | 123.3       | 122.1     | 1.0   |

Note:

1. The indices are calculated with infinite decimal figures and are rounded up to one decimal figure when published.
2. Percentage changes are calculated on the basis of the indices with infinite decimal figure and are rounded up to one decimal figure when published.
3. Index is not calculated due to seasonality.

**Table 3: Output Price Index in Agricultural and Livestock Changes**

**Base year: 2005=100.0**

| Year and Month        | Overall Index | Monthly Changes (%) | Annual Changes (%) | 12-month moving weighted average | 12- month moving weighted average changes (%) |
|-----------------------|---------------|---------------------|--------------------|----------------------------------|---|
| <b>2010:</b>          |               |                     |                    |                                  |   |
| I                     | 106.9         | -5.9                | 0.2                | 112.4                            | -1.9  |
| II                    | 108.2         | 1.2                 | 0.5                | 112.4                            | -1.5  |
| III                   | 114.5         | 5.9                 | -1.6               | 112.3                            | -1.8  |
| IV                    | 114.5         | 0.0                 | 0.7                | 112.4                            | -1.6  |
| V                     | 115.1         | 0.5                 | 0.5                | 112.4                            | -1.7  |
| VI                    | 114.9         | -0.1                | -1.3               | 112.3                            | -2.1  |
| VII                   | 116.5         | 1.3                 | -0.2               | 112.3                            | -2.0  |
| VIII                  | 113.2         | -2.8                | 2.2                | 112.4                            | -1.2  |
| IX                    | 120.2         | 6.1                 | 8.6                | 113.3                            | 0.8   |
| X                     | 156.0         | 29.8                | 42.5               | 119.7                            | 6.8   |
| XI                    | 156.0         | 0.0                 | 38.4               | 124.3                            | 10.7  |
| XII                   | 143.4         | -8.1                | 26.2               | 127.5                            | 13.5  |
| <i>Annual Average</i> | <b>127.5</b>  |                     |                    | <b>127.5</b>                     | <b>13.5</b>                                   |
| <b>2011:</b>          |               |                     |                    |                                  |   |
| I                     | 114.0         | -20.5               | 6.7                | 128.0                            | 13.8  |
| II                    | 112.0         | -1.8                | 3.5                | 128.2                            | 14.0  |
| III                   | 117.7         | 5.2                 | 2.8                | 128.4                            | 14.4  |
| IV                    | 116.0         | -1.5                | 1.3                | 128.6                            | 14.4  |
| V                     | 115.9         | -0.1                | 0.7                | 128.6                            | 14.4  |
| VI                    | 113.7         | -1.9                | -1.1               | 128.5                            | 14.5  |
| VII                   | 118.8         | 4.5                 | 2.0                | 128.7                            | 14.6  |
| VIII                  | 111.2         | -6.3                | -1.8               | 128.6                            | 14.3  |
| IX                    | 123.4         | 11.0                | 2.7                | 128.8                            | 13.8  |
| X                     | 148.7         | 20.5                | -4.7               | 127.8                            | 6.8   |
| XI                    | 148.4         | -0.2                | -4.9               | 127.0                            | 2.2   |
| XII                   | 137.5         | -7.3                | -4.1               | 126.4                            | -0.9  |
| <i>Annual Average</i> | <b>126.4</b>  |                     |                    | <b>126.4</b>                     | <b>-0.9</b>                                   |
| <b>2012:</b>          |               |                     |                    |                                  |   |
| I                     | 110.4         | -19.7               | -3.2               | 126.2                            | -1.4  |
| II                    | 107.7         | -2.4                | -3.8               | 125.9                            | -1.8  |
| III                   | 111.2         | 3.3                 | -5.6               | 125.4                            | -2.4  |
| IV                    | 108.0         | -2.9                | -6.9               | 124.7                            | -3.0  |
| V                     | 110.3         | 2.1                 | -4.9               | 124.3                            | -3.3  |
| VI                    | 108.1         | -2.0                | -4.9               | 123.9                            | -3.6  |
| VII                   | 118.7         | 9.8                 | -0.1               | 123.9                            | -3.7  |
| VIII                  | 112.1         | -5.5                | 0.8                | 124.0                            | -3.6  |
| IX                    |               |                     |                    |                                  |   |
| X                     |               |                     |                    |                                  |   |
| XI                    |               |                     |                    |                                  |   |
| XII                   |               |                     |                    |                                  |   |
| <i>Annual Average</i> |               |                     |                    |                                  |   |

Note:

1. The indices are calculated with infinite decimal figures and are rounded up to one decimal figure when published.
2. Percentage changes are calculated on the basis of the indices with five decimal figures and are rounded up to one decimal figure when published.

**Table 4: Input Price Indices in Agricultural and Livestock Production – Annual changes****Base year: 2005=100.0**

| Code   | Main groups  | Weights | August |       |       | Change (%) |           |
|--------|--|---------|--------|-------|-------|------------|-----------|
|        |  |         | 2012   | 2011  | 2010  | 2012/2011  | 2011/2010 |
| 220000 | Input Total  | 100.000 | 134.8  | 130.8 | 120.7 | 3.1        | 8.4       |
| 200000 | Goods and services currently consumed in agriculture       | 64.792  | 147.3  | 141.3 | 126.2 | 4.3        | 11.9      |
| 201000 | Seeds and planting stock                                   | 5.393   | 122.1  | 122.5 | 120.5 | -0.3       | 1.6       |
| 202000 | Energy and lubricants                                      | 16.335  | 189.0  | 166.2 | 145.2 | 13.7       | 14.4      |
| 203000 | Fertilizers and soil improvers                             | 4.626   | 160.5  | 141.9 | 133.0 | 13.1       | 6.7       |
| 204000 | Plant protection products and pesticides                   | 4.128   | 116.2  | 114.3 | 113.4 | 1.6        | 0.8       |
| 205000 | Veterinary expenses  | 1.505   | 122.2  | 119.8 | 115.4 | 2.1        | 3.8       |
| 206000 | Animal feedingstuffs                                       | 25.461  | 143.4  | 145.7 | 123.7 | -1.6       | 17.8      |
| 207000 | Maintenance of materials                                   | 1.739   | 137.3  | 132.7 | 130.0 | 3.4        | 2.1       |
| 208000 | Maintenance of buildings                                   | 223     | 120.8  | 119.9 | 118.3 | 0.7        | 1.4       |
| 209000 | Other goods and services                                   | 5.382   | 88.6   | 93.6  | 92.3  | -5.3       | 1.4       |
| 210000 | Goods and services contributing to agricultural investment | 35.208  | 111.8  | 111.4 | 110.5 | 0.3        | 0.9       |
| 211000 | Materials  | 29.219  | 110.9  | 110.5 | 109.4 | 0.4        | 1.0       |
| 211110 | Rotovators and other 2 wheel equipment                     | 1.635   | 113.0  | 114.6 | 113.1 | -1.4       | 1.4       |
| 211120 | Machinery and plant for cultivation                        | 976     | 130.5  | 128.9 | 125.7 | 1.2        | 2.5       |
| 211130 | Machinery and plant for harvesting                         | 1.425   | 117.1  | 117.0 | 116.1 | 0.1        | 0.8       |
| 211140 | Farm machinery and installations                           | 5.579   | 122.3  | 121.7 | 118.5 | 0.5        | 2.7       |
| 211210 | Tractors   | 1.895   | 113.4  | 112.6 | 111.5 | 0.7        | 1.0       |
| 211290 | Other vehicles   | 17.709  | 105.2  | 104.8 | 104.5 | 0.4        | 0.3       |
| 212000 | Buildings  | 5.989   | 116.2  | 116,0 | 115.8 | 0.2        | 0.2       |

Note:

1. The indices are calculated with infinite decimal figures and are rounded up to one decimal figure when published.
2. Percentage changes are calculated on the basis of the indices with five decimal figures and are rounded up to one decimal figure when published.

**Table 5: Input Price Indices in Agricultural and Livestock Production – Monthly changes**

**Base year: 2005=100.0**

| Code   | Main groups  | Weights | August 2012 | July 2012 | Δ (%) | August 2011 | July 2011 | Δ (%) |
|--------|--|---------|-------------|-----------|-------|-------------|-----------|-------|
| 220000 | Input Total  | 100.000 | 134.8       | 133.3     | 1.2   | 130.8       | 131.3     | -0.4  |
| 200000 | Goods and services currently consumed in agriculture       | 64.792  | 147.3       | 145.2     | 1.4   | 141.3       | 142.1     | -0.6  |
| 201000 | Seeds and planting stock                                   | 5.393   | 122.1       | 121.4     | 0.6   | 122.5       | 121.6     | 0.7   |
| 202000 | Energy and lubricants                                      | 16.335  | 189.0       | 183.1     | 3.2   | 166.2       | 169.8     | -2.1  |
| 203000 | Fertilizers and soil improvers                             | 4.626   | 160.5       | 160.3     | 0.1   | 141.9       | 142.0     | -0.1  |
| 204000 | Plant protection products and pesticides                   | 4.128   | 116.2       | 116.0     | 0.1   | 114.3       | 114.3     | 0.0   |
| 205000 | Veterinary expenses  | 1.505   | 122.2       | 122.3     | 0.0   | 119.8       | 118.7     | 0.9   |
| 206000 | Animal feedingstuffs                                       | 25.461  | 143.4       | 142.0     | 1.0   | 145.7       | 145.6     | 0.0   |
| 207000 | Maintenance of materials                                   | 1.739   | 137.3       | 136.9     | 0.3   | 132.7       | 132.6     | 0.0   |
| 208000 | Maintenance of buildings                                   | 223     | 120.8       | 120.7     | 0.1   | 119.9       | 119.8     | 0.1   |
| 209000 | Other goods and services                                   | 5.382   | 88.6        | 88.6      | 0.0   | 93.6        | 94.3      | -0.8  |
| 210000 | Goods and services contributing to agricultural investment | 35.208  | 111.8       | 111.3     | 0.5   | 111.4       | 111.4     | 0.0   |
| 211000 | Materials  | 29.219  | 110.9       | 110.2     | 0.6   | 110.5       | 110.3     | 0.1   |
| 211110 | Rotovators and other 2 wheel equipment                     | 1.635   | 113.0       | 113.1     | 0.0   | 114.6       | 114.6     | 0.0   |
| 211120 | Machinery and plant for cultivation                        | 976     | 130.5       | 129.7     | 0.6   | 128.9       | 128.5     | 0.3   |
| 211130 | Machinery and plant for harvesting                         | 1.425   | 117.1       | 117.1     | 0.0   | 117.0       | 117.0     | 0.0   |
| 211140 | Farm machinery and installations                           | 5.579   | 122.3       | 122.2     | 0.1   | 121.7       | 121.6     | 0.1   |
| 211210 | Tractors   | 1.895   | 113.4       | 113.4     | 0.0   | 112.6       | 112.4     | 0.2   |
| 211290 | Other vehicles   | 17.709  | 105.2       | 104.3     | 0.9   | 104.8       | 104.6     | 0.1   |
| 212000 | Buildings  | 5.989   | 116.2       | 116.3     | -0.1  | 116.0       | 116.6     | -0.5  |

Note:

1. The indices are calculated with infinite decimal figures and are rounded up to one decimal figure when published.
2. Percentage changes are calculated on the basis of the indices with five decimal figures and are rounded up to one decimal figure when published.

**Table 6: Input Price Index in Agricultural and Livestock Changes**

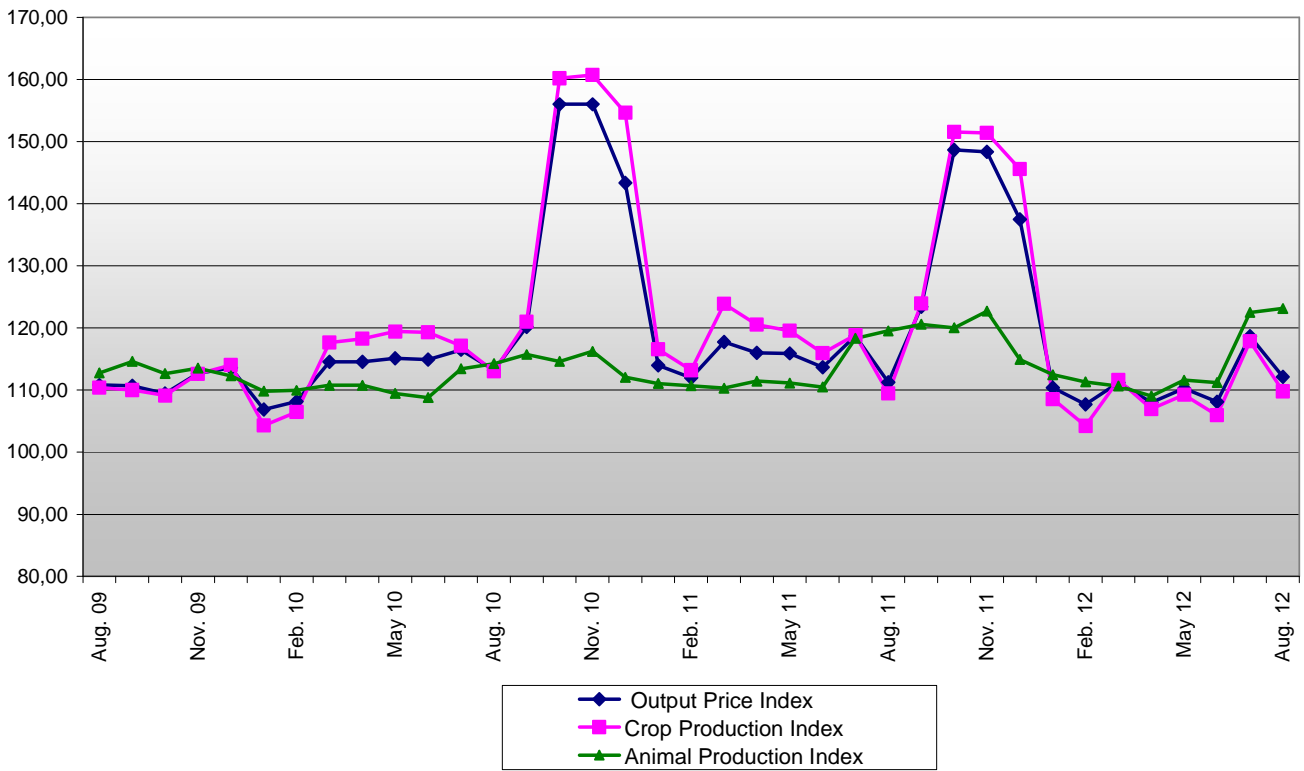
**Base year: 2005=100.0**

| Year and Month        | Overall Index | Monthly Changes (%) | Annual Changes (%) | 12-month moving average | 12- month moving average changes (%) |
|-----------------------|---------------|---------------------|--------------------|-------------------------|--------------------------------------|
| <b>2010:</b>          |               |                     |                    |                         |                                      |
| I                     | 115.9         | 0.8                 | -0.5               | 115.3                   | -5.8                                 |
| II                    | 116.4         | 0.5                 | 0.5                | 115.4                   | -5.4                                 |
| III                   | 118.3         | 1.6                 | 2.8                | 115.7                   | -4.7                                 |
| IV                    | 119.2         | 0.8                 | 4.0                | 116.0                   | -3.8                                 |
| V                     | 120.0         | 0.7                 | 4.9                | 116.5                   | -2.7                                 |
| VI                    | 120.1         | 0.1                 | 4.2                | 116.9                   | -1.6                                 |
| VII                   | 120.1         | 0.0                 | 3.8                | 117.3                   | -0.6                                 |
| VIII                  | 120.7         | 0.5                 | 3.9                | 117.7                   | 0.4                                  |
| IX                    | 121.5         | 0.7                 | 4.7                | 118.1                   | 1.4                                  |
| X                     | 122.3         | 0.6                 | 5.9                | 118.7                   | 2.4                                  |
| XI                    | 123.1         | 0.7                 | 7.3                | 119.4                   | 3.3                                  |
| XII                   | 125.0         | 1.5                 | 8.8                | 120.2                   | 4.2                                  |
| <i>Annual Average</i> | <b>120.2</b>  |                     |                    | <b>120.2</b>            | <b>4.2</b>                           |
| <b>2011:</b>          |               |                     |                    |                         |                                      |
| I                     | 127.6         | 2.1                 | 10.1               | 121.2                   | 5.1                                  |
| II                    | 128.9         | 1.0                 | 10.7               | 122.2                   | 5.9                                  |
| III                   | 130.9         | 1.6                 | 10.7               | 123.3                   | 6.6                                  |
| IV                    | 131.3         | 0.0                 | 10.2               | 124.3                   | 7.1                                  |
| V                     | 131.3         | -0.3                | 9.5                | 125.2                   | 7.5                                  |
| VI                    | 130.9         | 0.1                 | 9.0                | 126.1                   | 7.9                                  |
| VII                   | 131.3         | 0.3                 | 9.3                | 127.1                   | 8.3                                  |
| VIII                  | 130.8         | -0.4                | 8.4                | 127.9                   | 8.7                                  |
| IX                    | 131.2         | 0.3                 | 7.9                | 128.7                   | 9.0                                  |
| X                     | 131.8         | 0.4                 | 7.7                | 129.5                   | 9.1                                  |
| XI                    | 132.2         | 0.3                 | 7.4                | 130.3                   | 9.1                                  |
| XII                   | 131.9         | -0.2                | 5.5                | 130.8                   | 8.8                                  |
| <i>Annual Average</i> | <b>130.8</b>  |                     |                    | <b>130.8</b>            | <b>8.8</b>                           |
| <b>2012:</b>          |               |                     |                    |                         |                                      |
| I                     | 133.2         | 1.0                 | 4.4                | 131.3                   | 8.3                                  |
| II                    | 133.2         | 0.0                 | 3.4                | 131.7                   | 7.7                                  |
| III                   | 134.1         | 0.7                 | 2.5                | 131.9                   | 7.0                                  |
| IV                    | 133.5         | -0.4                | 1.7                | 132.1                   | 6.3                                  |
| V                     | 133.3         | -0.2                | 1.5                | 132.3                   | 5.6                                  |
| VI                    | 132.1         | -0.9                | 0.9                | 132.4                   | 4.9                                  |
| VII                   | 133.3         | 0.9                 | 1.5                | 132.5                   | 4.3                                  |
| VIII                  | 134.8         | 1.2                 | 3.1                | 132.9                   | 3.9                                  |
| IX                    |               |                     |                    |                         |                                      |
| X                     |               |                     |                    |                         |                                      |
| XI                    |               |                     |                    |                         |                                      |
| XII                   |               |                     |                    |                         |                                      |
| <i>Annual Average</i> |               |                     |                    |                         |                                      |

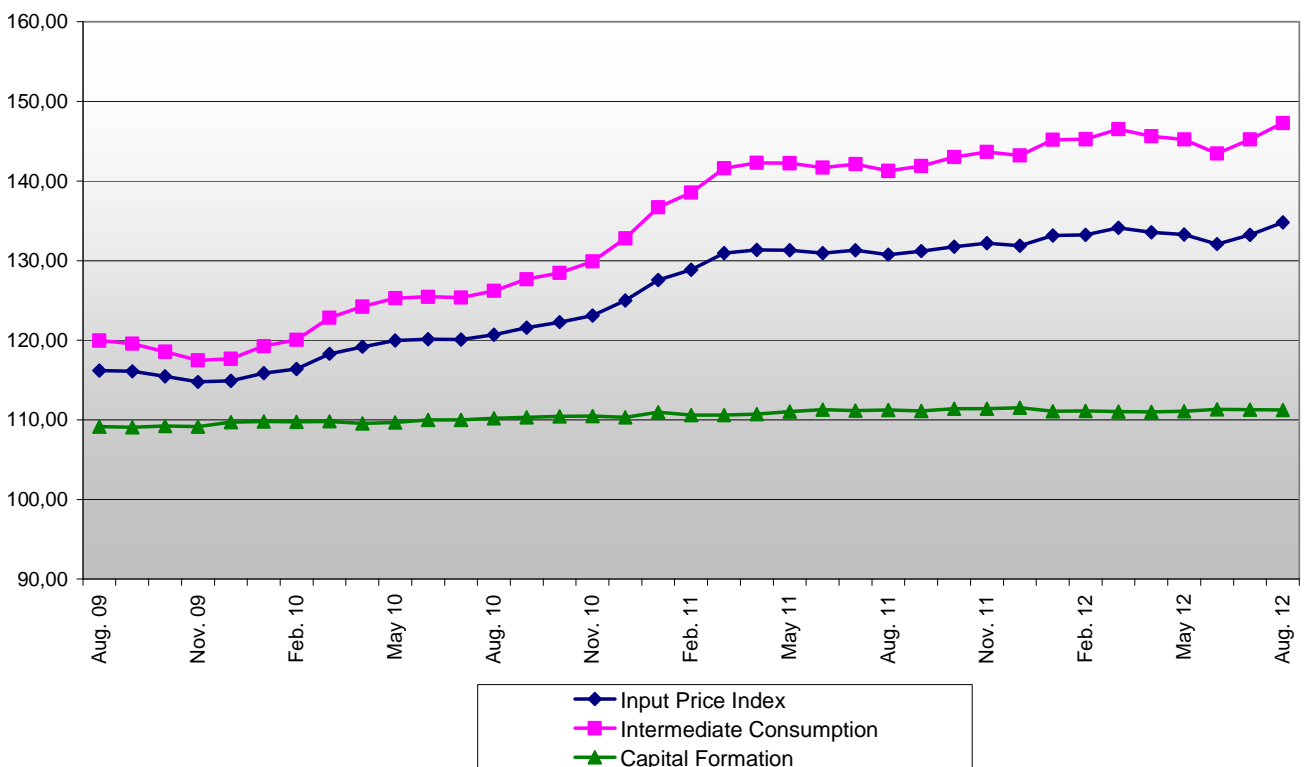
Note:

1. The indices are calculated with infinite decimal figures and are rounded up to one decimal figure when published.
2. Percentage changes are calculated on the basis of the indices with five decimal figures and are rounded up to one decimal figure when published.

**Graph 1: Evolution of the Output Price Index in Agriculture – Livestock and of the groups of Crop and Animal Production (2005=100.0)**

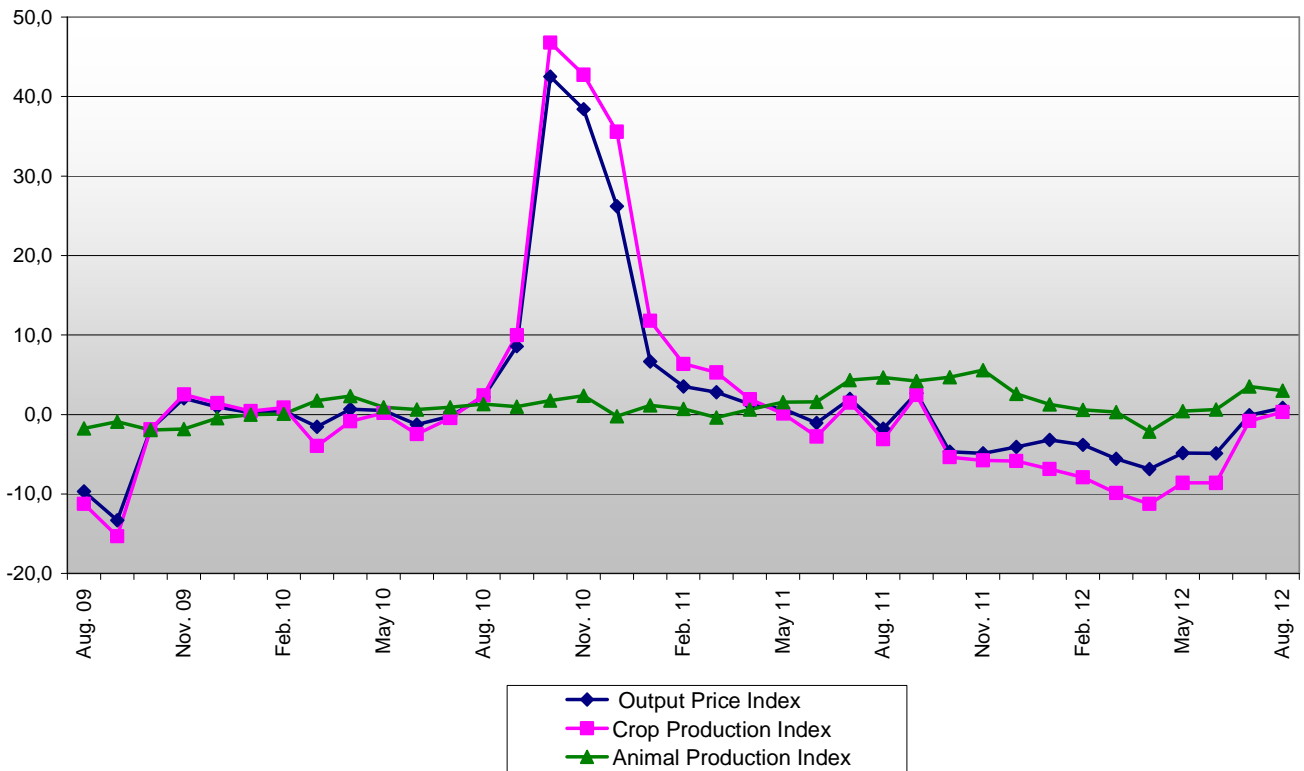


**Graph 2: Evolution of the Input Price Index in Agriculture – Livestock and of the groups of Intermediate Consumption and Capital Formation (2005=100.0)**

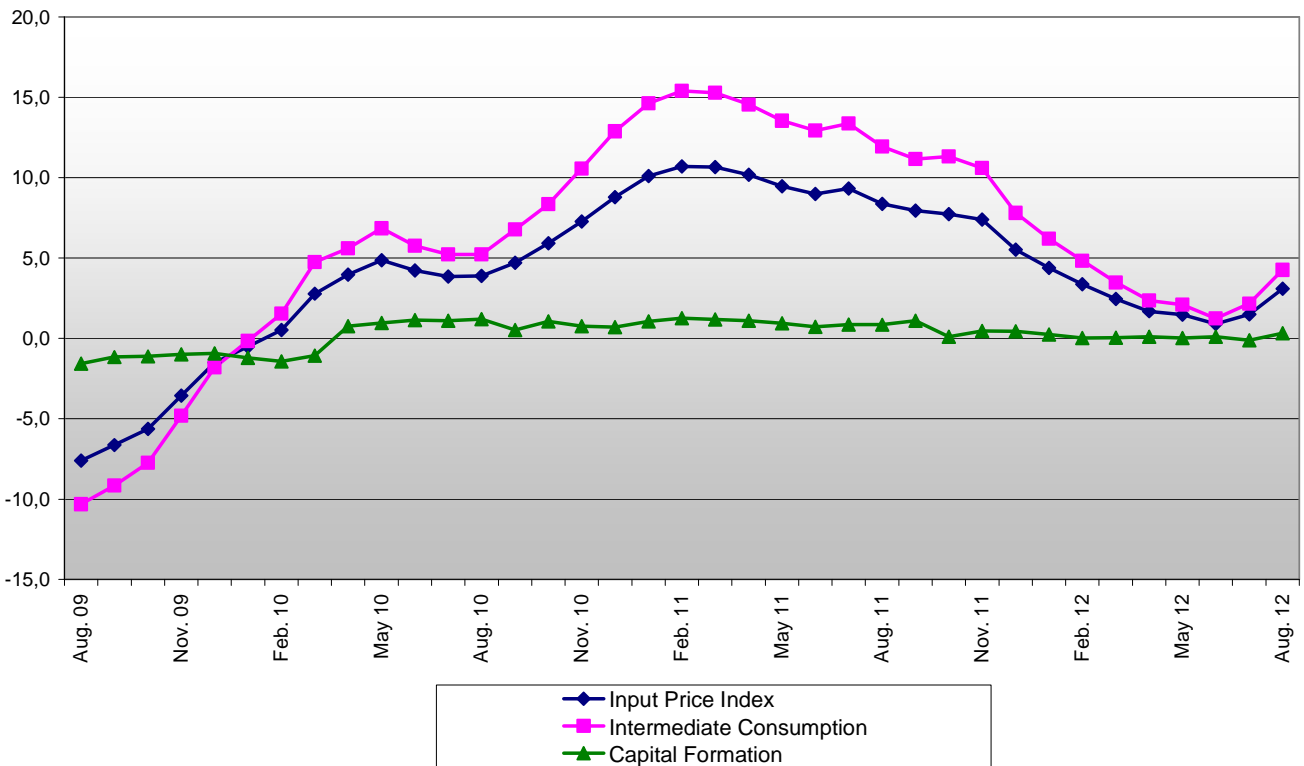




**Graph 3: Annual changes of the Output Price Index in Agriculture – Livestock and of the Indices of Crop and Animal Production (2005=100.0)**



**Graph 4: Annual changes of the Input Price Index in Agriculture – Livestock and of the Indices of Intermediate Consumption and Capital Formation (2005=100.0)**



## METHODOLOGICAL NOTES

|  |  |
|--|--|
| <b>Generally</b>                           | The compilation of the Input and Output Price Indices in agriculture and livestock started in 1967 with base year 1966=100.0. These indices are being released with their current form since January 2005. when they replaced the previous indices with base year 2000.  |
| <b>Purpose of the indices– definitions</b> | <p>The purpose of the Output Price Index is to measure the relative change of prices that the producers receive in the agricultural – livestock sector. from the sale of their products. The purpose of the Input Price Index is to measure the change in the prices paid for by them for the purchase of the means they use in the production process.</p> <p>The Output Price Index is divided into the crop and the animal output index. The Input Price Index is compiled from the aggregation of the price indices of the intermediate inputs and the fixed capital formation goods.</p> <p>As regards the Output Price Index. the prices collected are the market prices of the products. The market price is defined as the price received by the producer without the deduction of taxes or levies (except deductible VAT) and excluding subsidies.</p> <p>As regards the Input Price Index. the prices collected refer to the prices paid for by the producers to buy the goods and services they need for their agricultural and livestock production. excluding VAT and transport expenses.</p> |
| <b>Legal basis</b>                         | The compilation of the Input and Output Indices in agriculture and livestock is based on voluntary agreements between Eurostat and the Member States. The foundations for these agreements were laid in the early seventies.   |
| <b>Reference period</b>                    | Month  |
| <b>Base year</b>                           | 2005=100.0.  |
| <b>Revision</b>                            | Input and Output price indices are fixed base year indices. These indices are updated every five (5) years in years ending in 0 or 5. The most recent revision is with base year 2005=100.0. with January 2009 as first reference month.   |
| <b>Statistical classification</b>          | According to the common methodology of the member states of EU and Eurostat. the groups of products of the Agricultural Price Indices follow the same classification of the groups as in EAA (Economic Agricultural Accounts).   |
| <b>Geographical coverage</b>               | The indices cover the whole of the country.  |
| <b>Coverage of economic activities</b>     | The Input and Output Price Indices cover the transactions for products and services in the sector of agriculture and livestock. In addition. the olive oil and must – wine transactions are covered. which are included in the manufacturing sector when their production – manufacturing process takes place at the level of agricultural unit and thus it is considered to be an activity of the agricultural sector.  |
| <b>Seasonality</b>                         | Seasonality influences the agricultural and livestock production and as a result some products are not available every month in a calendar year. Therefore. the annual weighing coefficients are divided only in the months when the products are available.   |
| <b>Statistical survey</b>                  | <p>The sources of price collection are the agricultural cooperatives (unions). which collect the final products. as well as the commercial and the industrial enterprises. which buy the final products directly from the producers.</p> <p>The price data for the output price index are collected from approximately 734 sources and those for input prices are collected from approximately 709 sources.</p>  |
| <b>Publication of data</b>                 | The Input – Output Price Indices with the new base year (2005) are being released since March 2009. with January 2009 as first reference month. The time series with base year 2005=100.0 are available from January 2000 onwards.   |
| <b>References</b>                          | <p>More information on the methodology concerning the compilation and calculation of the indices and for the time series is available on the EL.STAT.</p> <p>Website: (<a href="http://www.statistics.gr/portal/page/portal/ESYE/PAGE-themes?p_param=A0504">http://www.statistics.gr/portal/page/portal/ESYE/PAGE-themes?p_param=A0504</a>).</p>   |