



HELLENIC REPUBLIC



HELLENIC STATISTICAL AUTHORITY

Piraeus, 12 November 2010

## PRESS RELEASE

The Output Price Index in Agriculture and Livestock increased by 7.7% while the Input Price Index in Agriculture and Livestock increased by 4.7% in September 2010 compared with September 2009.

### INPUT AND OUTPUT PRICE INDICES IN AGRICULTURE – LIVESTOCK: September 2010

The evolution of the Input and Output Price Indices in Agriculture – Livestock, with base year 2005=100.0, according to provisional data, is as follows:

The Output Price Index in Agriculture and Livestock (excluding subsidies) increased by 7.7% in September 2010, compared with September 2009. A year ago, the index decreased by 13.3% (Table 1).

The Output Price Index in September 2010, compared with August 2010, increased by 6.5%. A year ago, the index decreased by 0.1% (Table 2).

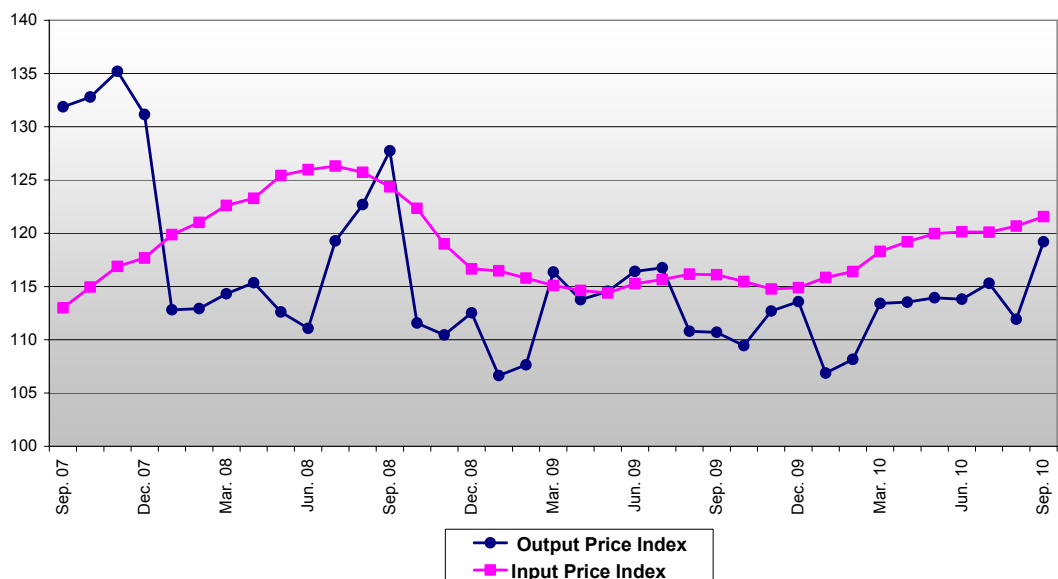
The twelve-month weighted average index, from October 2009 to September 2010, compared with the same index of the period from October 2008 to September 2009 increased by 0.3%. A year ago, the twelve-month weighted average index decreased by 8.3% (Table 3).

The Input Price Index in Agriculture and Livestock increased by 4.7% in September 2010, compared with September 2009. A year ago, the index decreased by 6.6% (Table 4).

The Input Price Index in September 2010, compared with August 2010, increased by 0.7%. A year ago, the index decreased by 0.1% (Table 5).

The twelve-month average index, from October 2009 to September 2010, compared with the same index of the period from October 2008 to September 2009 increased by 1.4%. A year ago, the twelve-month average index decreased by 4.5% (Table 6).

Evolution of Input and Output Price Indices in Agriculture - Livestock (2005=100.0)



Information:

Economic and Short-Term Indices Division

Wholesale Prices and Price Indices Section

Adamantia Georgostathi  
Tel: 0030 213 1352121  
Fax: 0030 213 1352714

**Table 1: Output Price Indices in Agricultural and Livestock Production – Annual changes****Base year: 2005=100.0**

Code	Main groups	Weights	September			Change (%)	
			2010	2009	2008	2010/2009	2009/2008
140000	AGRICULTURAL GOODS OUTPUT (100000+130000), including fruits (060000) and vegetables (040000)	100,000	119.2	110.7	127.7	7.7	-13.3
141000	AGRICULTURAL GOODS OUTPUT (101000+130000), excluding fruits (060000) and vegetables (040000)	67,214	123.3	114.5	123.7	7.7	-7.5
100000	CROP OUTPUT (010000 TO 090000), including fruits (060000) and vegetables (040000)	71,504	119.8	110.0	129.9	8.9	-15.3
101000	CROP OUTPUT (010000 TO 090000), excluding fruits (060000) and vegetables (040000)	38,718	126.2	114.5	126.8	10.3	-9.7
010000	Cereals (including seeds)	6,952	136.1	119.3	157.0	14.0	-24.0
020000	Industrial Crops	13,977	187.4	141.1	128.9	32.8	9.5
030000	Forage Plants	3,293	118.9	125.7	115.4	-5.4	9.0
040000	Vegetables and Horticultural Products	17,827	131.1	104.8	122.6	25.1	-14.5
050000	Potatoes (including seeds)	2,762	123.7	129.6	121.0	-4.5	7.1
060000	Fruits	14,959	103.1	106.8	139.2	-3.5	-23.2
070000	Wine (incl. must)	288	113.0	114.0	111.9	-0.9	1.9
080000	Olive Oil	11,428	73.0	82.2	86.0	-11.2	-4.5
090000	Other Crop Products	18	111.2	105.0	106.0	5.9	-0.9
130000	ANIMAL OUTPUT (110000+120000)	28,496	115.7	114.6	115.7	1.0	-0.9
110000	Animals	13,786	116.1	115.9	114.7	0.2	1.0
120000	Animal Products	14,710	115.0	112.2	117.5	2.5	-4.5

Note:

1. The indices are calculated with infinite decimal figures and are rounded up to one decimal figure when published.
2. Percentage changes are calculated on the basis of the indices with infinite decimal figure and are rounded up to one decimal figure when published.

**Table 2: Output Price Indices in Agricultural and Livestock Production – Monthly changes**

**Base year: 2005=100.0**

Code	Main groups	Weights	2010			2009		
			September	August	Δ (%)	September	August	Δ (%)
140000	AGRICULTURAL GOODS OUTPUT (100000+130000), including fruits (060000) and vegetables (040000)	100,000	119.2	111.9	6.5	110.7	110.8	-0.1
141000	AGRICULTURAL GOODS OUTPUT (101000+130000), excluding fruits (060000) and vegetables (040000)	67,214	123.3	108.0	14.2	114.5	113.0	1.3
100000	CROP OUTPUT (010000 TO 090000), including fruits (060000) and vegetables (040000)	71,504	119.8	111.4	7.5	110.0	110.4	-0.3
101000	CROP OUTPUT (010000 TO 090000), excluding fruits (060000) and vegetables (040000)	38,718	126.2	104.8	20.5	114.5	113.2	1.2
010000	Cereals (including seeds)	6,952	136.1	112.1	21.4	119.3	121.8	-2.0
020000	Industrial Crops	13,977	187.4	247.4	-24.3	141.1	306.7	-54.0
030000	Forage Plants	3,293	118.9	117.9	0.9	125.7	122.9	2.3
040000	Vegetables and Horticultural Products	17,827	131.1	124.4	5.4	104.8	103.1	1.6
050000	Potatoes (including seeds)	2,762	123.7	115.4	7.2	129.6	130.6	-0.8
060000	Fruits	14,959	103.1	107.3	-4.0	106.8	114.0	-6.3
070000	Wine (incl. must)	288	113.0	113.0	0.0	114.0	114.0	0.0
080000	Olive Oil	11,428	73.0	72.7	0.3	82.2	72.1	14.0
090000	Other Crop Products	18	111.2	105.5	5.5	105.0	103.7	1.3
130000	ANIMAL OUTPUT (110000+120000)	28,496	115.7	114.3	1.3	114.6	112.8	1.6
110000	Animals	13,786	116.1	114.8	1.1	115.9	114.0	1.6
120000	Animal Products	14,710	115.0	113.5	1.3	112.2	111.2	1.0

Note:

1. The indices are calculated with infinite decimal figures and are rounded up to one decimal figure when published.
2. Percentage changes are calculated on the basis of the indices with infinite decimal figure and are rounded up to one decimal figure when published.

Table 3: Output Price Index in Agricultural and Livestock Changes

Base year: 2005=100.0

Year and Month	Overall Index	Monthly Changes (%)	Annual Changes (%)	12-month moving weighted average	12- month moving weighted average changes (%)
<b>2008:</b>					
I	112.8	-14.0	7.6	119.4	11.2
II	112.9	0.1	9.6	120.0	12.2
III	114.3	1.2	7.9	120.7	12.9
IV	115.4	0.9	8.2	121.4	14.0
V	112.6	-2.4	5.5	121.8	14.5
VI	111.1	-1.4	6.2	122.3	15.2
VII	119.3	7.4	5.9	122.7	15.3
VIII	122.7	2.9	1.9	122.9	14.4
IX	127.7	4.1	-3.1	122.5	11.5
X	111.6	-12.7	-16.0	119.6	5.3
XI	110.4	-1.0	-18.3	116.9	0.4
XII	112.5	1.8	-14.2	114.9	-3.3
<i>Annual Average</i>	<b>114.9</b>			<b>114.9</b>	<b>-3.3</b>
<b>2009:</b>					
I	106.6	-5.2	-5.5	114.5	-4.1
II	107.6	0.9	-4.7	114.2	-4.9
III	116.3	8.1	1.8	114.3	-5.2
IV	113.8	-2.2	-1.4	114.2	-5.9
V	114.6	0.7	1.7	114.4	-6.1
VI	116.4	1.6	4.8	114.7	-6.2
VII	116.7	0.3	-2.1	114.6	-6.6
VIII	110.8	-5.1	-9.7	113.8	-7.4
IX	110.7	-0.1	-13.3	112.3	-8.3
X	109.5	-1.1	-1.9	112.0	-6.3
XI	112.7	3.0	2.0	112.3	-4.0
XII	106.6	-5.2	-5.5	114.5	-4.1
<i>Annual Average</i>	<b>112.4</b>			<b>112.4</b>	<b>-2.2</b>
<b>2010:</b>					
I	106.9	-5.9	0.2	112.4	-1.9
II	108.2	1.2	0.5	112.4	-1.5
III	113.4	4.9	-2.5	112.2	-1.9
IV	113.5	0.1	-0.2	112.2	-1.8
V	114.0	0.4	-0.5	112.2	-1.9
VI	113.8	-0.1	-2.2	112.0	-2.4
VII	115.3	1.3	-1.2	111.9	-2.4
VIII	111.9	-2.9	1.0	111.9	-1.7
IX	119.2	6.5	7.7	112.7	0.3
X					
XI					
XII					
<i>Annual Average</i>					

Note:

1. The indices are calculated with infinite decimal figures and are rounded up to one decimal figure when published.
2. Percentage changes are calculated on the basis of the indices with five decimal figures and are rounded up to one decimal figure when published.

**Table 4: Input Price Indices in Agricultural and Livestock Production – Annual changes****Base year: 2005=100.0**

Code	Main groups	Weights	September			Change (%)	
			2010	2009	2008	2010/2009	2009/2008
220000	Input Total	100,000	121.5	116.1	124.4	4.7	-6.6
200000	Goods and services currently consumed in agriculture	64,792	127.7	119.6	131.6	6.8	-9.2
201000	Seeds and planting stock	5,393	120.3	123.4	118.4	-2.5	4.2
202000	Energy and lubricants	16,335	148.2	114.6	142.0	29.3	-19.3
203000	Fertilizers and soil improvers	4,626	133.1	167.6	168.8	-20.6	-0.7
204000	Plant protection products and pesticides	4,128	113.3	113.0	110.8	0.3	2.0
205000	Veterinary expenses	1,505	117.6	112.2	108.0	4.9	3.8
206000	Animal feedingstuffs	25,461	126.4	118.8	132.9	6.4	-10.6
207000	Maintenance of materials	1,739	130.1	127.8	124.2	1.8	2.9
208000	Maintenance of buildings	223	118.4	116.8	117.8	1.4	-0.9
209000	Other goods and services	5,382	87.4	97.7	100.6	-10.6	-2.9
210000	Goods and services contributing to agricultural investment	35,208	110.3	109.7	111.0	0.5	-1.2
211000	Materials	29,219	109.2	108.9	110.0	0.3	-1.0
211110	Rotovators and other 2 wheel equipment	1,635	113.1	111.9	113.0	1.0	-1.0
211120	Machinery and plant for cultivation	976	125.8	122.7	121.4	2.5	1.1
211130	Machinery and plant for harvesting	1,425	116.1	114.8	110.3	1.1	4.0
211140	Farm machinery and installations	5,579	118.4	116.7	115.3	1.5	1.1
211210	Tractors	1,895	111.5	110.3	109.5	1.1	0.8
211290	Other vehicles	17,709	104.2	104.7	107.4	-0.5	-2.4
212000	Buildings	5,989	115.9	114.0	116.2	1.7	-2.0

Note:

1. The indices are calculated with infinite decimal figures and are rounded up to one decimal figure when published.
2. Percentage changes are calculated on the basis of the indices with five decimal figures and are rounded up to one decimal figure when published.

**Table 5: Input Price Indices in Agricultural and Livestock Production – Monthly changes****Base year: 2005=100.0**

Code	Main groups	Weights	2010			2009		
			September	August	Δ (%)	September	August	Δ (%)
220000	Input Total	100,000	121.5	120.7	0.7	116.1	116.2	-0.1
200000	Goods and services currently consumed in agriculture	64,792	127.7	126.2	1.1	119.6	120.0	-0.3
201000	Seeds and planting stock	5,393	120.3	120.5	-0.2	123.4	123.4	-0.1
202000	Energy and lubricants	16,335	148.2	145.2	2.0	114.6	116.3	-1.4
203000	Fertilizers and soil improvers	4,626	133.1	133.0	0.1	167.6	167.7	-0.1
204000	Plant protection products and pesticides	4,128	113.3	113.4	-0.2	113.0	112.6	0.4
205000	Veterinary expenses	1,505	117.6	115.4	1.9	112.2	110.0	2.0
206000	Animal feedingstuffs	25,461	126.4	123.7	2.2	118.8	120.3	-1.3
207000	Maintenance of materials	1,739	130.1	130.0	0.1	127.8	127.8	0.0
208000	Maintenance of buildings	223	118.4	118.3	0.1	116.8	116.5	0.2
209000	Other goods and services	5,382	87.4	92.3	-5.3	97.7	90.9	7.5
210000	Goods and services contributing to agricultural investment	35,208	110.3	110.5	-0.1	109.7	109.2	0.5
211000	Materials	29,219	109.2	109.4	-0.2	108.9	108.3	0.5
211110	Rotovators and other 2 wheel equipment	1,635	113.1	113.1	0.0	111.9	111.8	0.1
211120	Machinery and plant for cultivation	976	125.8	125.7	0.0	122.7	122.5	0.2
211130	Machinery and plant for harvesting	1,425	116.1	116.1	0.0	114.8	114.8	0.0
211140	Farm machinery and installations	5,579	118.4	118.5	0.0	116.7	116.7	-0.1
211210	Tractors	1,895	111.5	111.5	0.0	110.3	110.3	0.0
211290	Other vehicles	17,709	104.2	104.5	-0.3	104.7	103.8	0.9
212000	Buildings	5,989	115.9	115.8	0.1	114.0	113.4	0.5

Note:

1. The indices are calculated with infinite decimal figures and are rounded up to one decimal figure when published.
2. Percentage changes are calculated on the basis of the indices with five decimal figures and are rounded up to one decimal figure when published.

**Table 6: Input Price Index in Agricultural and Livestock Changes**

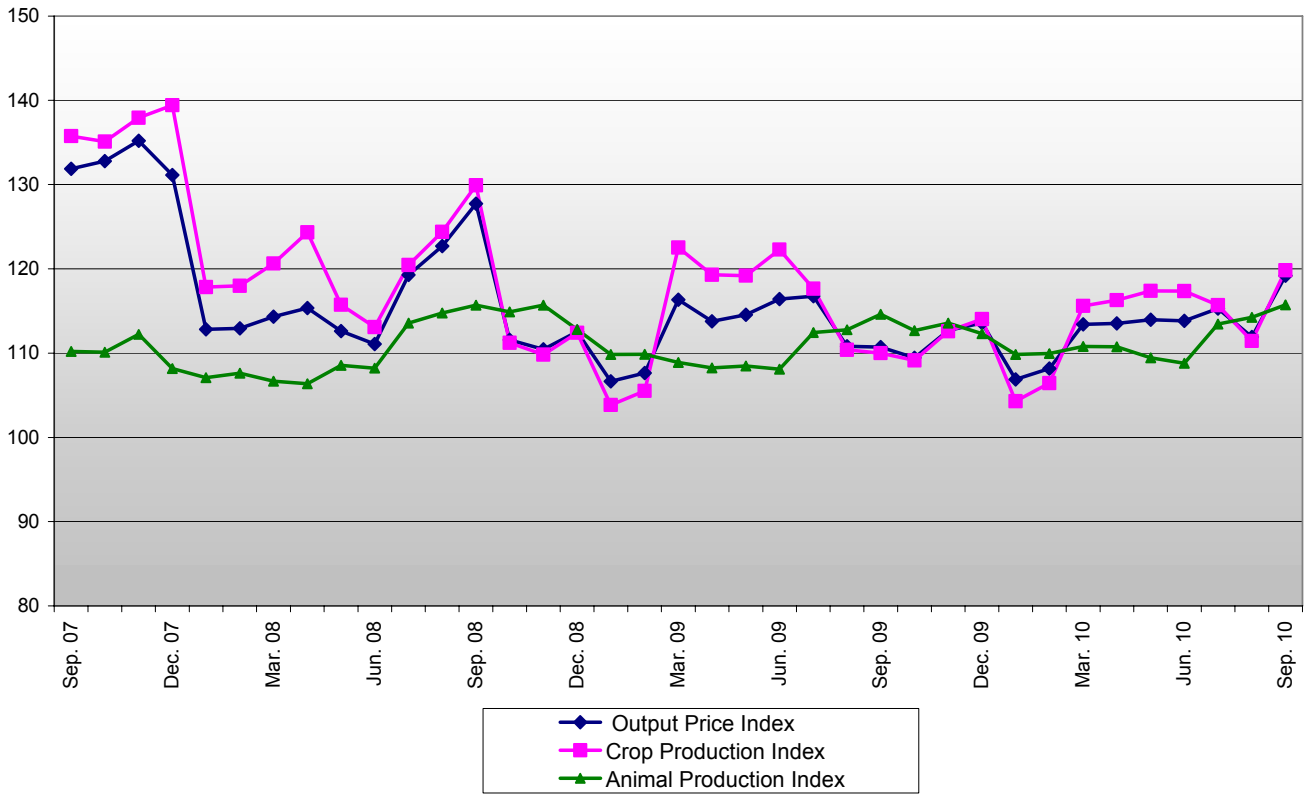
**Base year: 2005=100.0**

Year and Month	Overall Index	Monthly Changes (%)	Annual Changes (%)	12-month moving average	12- month moving average changes (%)
<b>2008:</b>					
I	119.9	1.9	13.5	111.7	7.2
II	121.0	1.0	13.0	112.9	7.9
III	122.6	1.3	14.1	114.1	8.7
IV	123.3	0.5	14.4	115.4	9.6
V	125.4	1.7	16.0	116.9	10.6
VI	126.0	0.4	16.2	118.3	11.6
VII	126.3	0.3	16.0	119.8	12.5
VIII	125.7	-0.5	14.0	121.1	13.2
IX	124.4	-1.1	10.1	122.0	13.3
X	122.3	-1.6	6.4	122.6	13.0
XI	119.0	-2.7	1.8	122.8	12.1
XII	116.7	-2.0	-0.9	122.7	11.0
<i>Annual Average</i>	<b>122.7</b>			<b>122.7</b>	<b>11.0</b>
<b>2009:</b>					
I	116.5	-0.1	-2.8	122.4	9.6
II	115.8	-0.6	-4.3	122.0	8.1
III	115.1	-0.6	-6.1	121.4	6.4
IV	114.6	-0.4	-7.0	120.6	4.5
V	114.4	-0.2	-8.8	119.7	2.5
VI	115.3	0.8	-8.5	118.8	0.4
VII	115.7	0.3	-8.4	118.0	-1.5
VIII	116.2	0.4	-7.6	117.2	-3.2
IX	116.1	-0.1	-6.6	116.5	-4.5
X	115.5	-0.5	-5.6	115.9	-5.5
XI	114.8	-0.6	-3.6	115.5	-5.9
XII	114.9	0.1	-1.5	115.4	-6.0
<i>Annual Average</i>	<b>115.4</b>			<b>115.4</b>	<b>-6.0</b>
<b>2010:</b>					
I	115.9	0.8	-0.5	115.3	-5.8
II	116.4	0.5	0.5	115.4	-5.4
III	118.3	1.6	2.8	115.7	-4.7
IV	119.2	0.8	4.0	116.0	-3.8
V	120.0	0.7	4.9	116.5	-2.7
VI	120.1	0.1	4.2	116.9	-1.6
VII	120.1	0.0	3.8	117.3	-0.6
VIII	120.7	0.5	3.9	117.7	0.4
IX	121.5	0.7	4.7	118.1	1.4
X					
XI					
XII					
<i>Annual Average</i>					

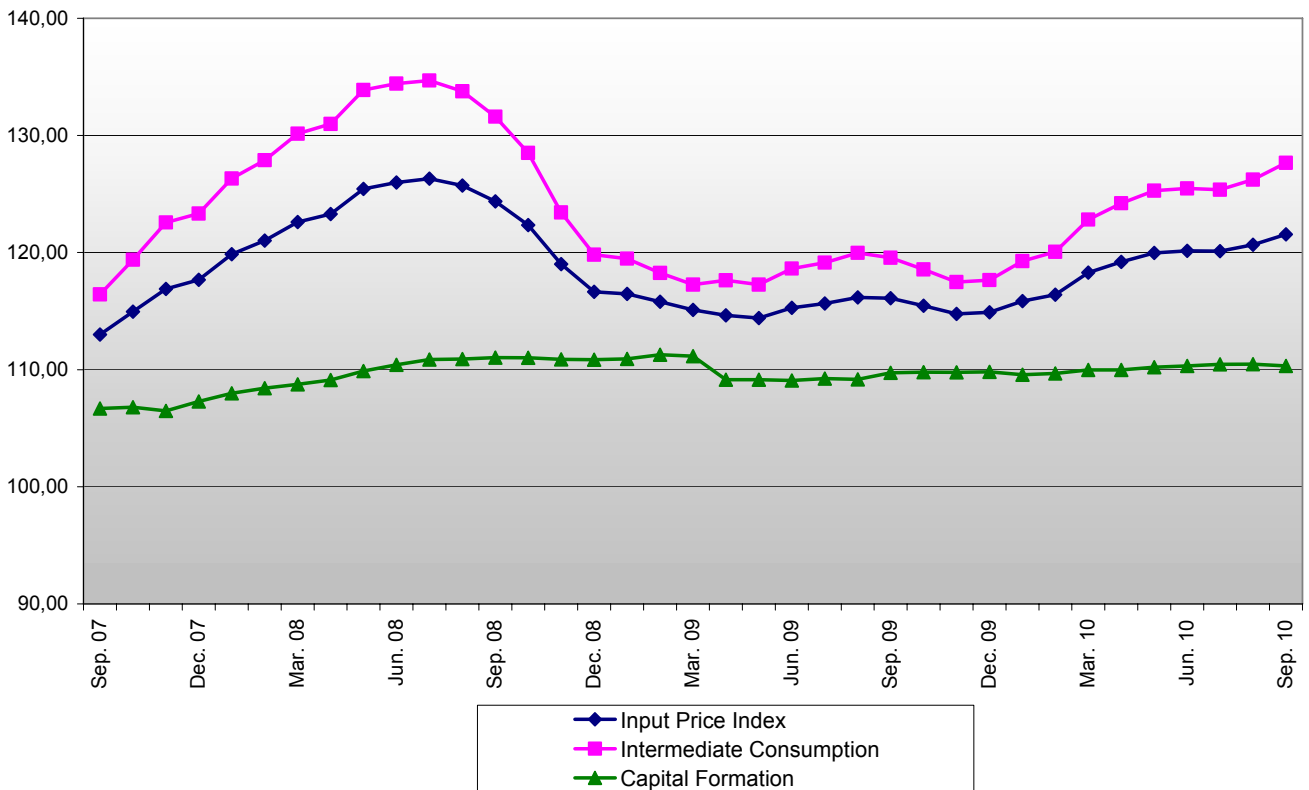
Note:

1. The indices are calculated with infinite decimal figures and are rounded up to one decimal figure when published.
2. Percentage changes are calculated on the basis of the indices with five decimal figures and are rounded up to one decimal figure when published.

**Graph 1: Evolution of the Output Price Index in Agriculture – Livestock and of the groups of Crop and Animal Production (2005=100.0)**

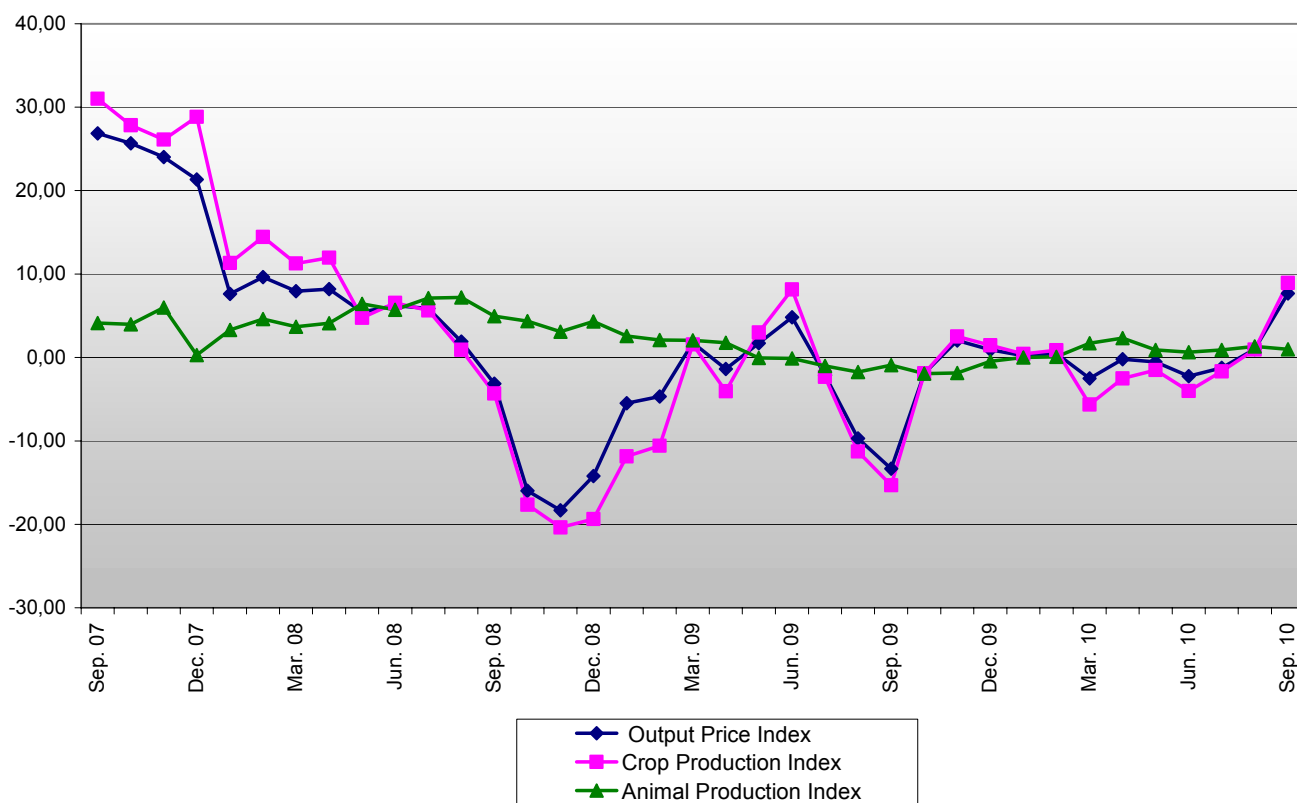


**Graph 2: Evolution of the Input Price Index in Agriculture – Livestock and of the groups of Intermediate Consumption and Capital Formation (2005=100.0)**

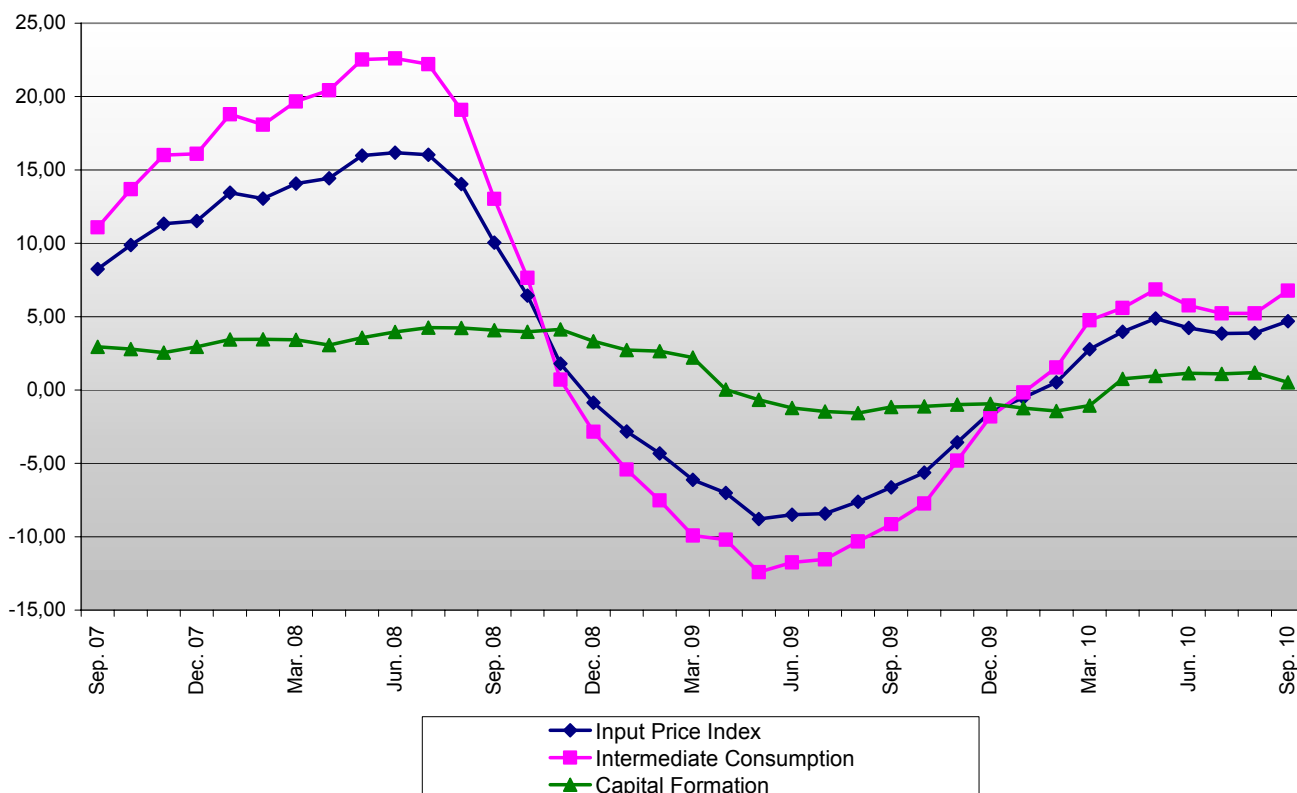




**Graph 3: Annual changes of the Output Price Index in Agriculture – Livestock and of the Indices of Crop and Animal Production (2005=100.0)**



**Graph 4: Annual changes of the Input Price Index in Agriculture – Livestock and of the Indices of Intermediate Consumption and Capital Formation (2005=100.0)**



## METHODOLOGICAL NOTES

<b>Generally</b>	The compilation of the Input and Output Price Indices in agriculture and livestock started in 1967 with base year 1966=100.0. These indices are being released with their current form since January 2005, when they replaced the previous indices with base year 2000.
<b>Purpose of the indices– definitions</b>	<p>The purpose of the Output Price Index is to measure the relative change of prices that the producers receive in the agricultural – livestock sector, from the sale of their products. The purpose of the Input Price Index is to measure the change in the prices paid for by them for the purchase of the means they use in the production process.</p> <p>The Output Price Index is divided into the crop and the animal output index. The Input Price Index is compiled from the aggregation of the price indices of the intermediate inputs and the fixed capital formation goods.</p> <p>As regards the Output Price Index, the prices collected are the market prices of the products. The market price is defined as the price received by the producer without the deduction of taxes or levies (except deductible VAT) and excluding subsidies.</p> <p>As regards the Input Price Index, the prices collected refer to the prices paid for by the producers to buy the goods and services they need for their agricultural and livestock production, excluding VAT and transport expenses.</p>
<b>Legal basis</b>	The compilation of the Input and Output Indices in agriculture and livestock is based on voluntary agreements between Eurostat and the Member States. The foundations for these agreements were laid in the early seventies.
<b>Reference period</b>	Month
<b>Base year</b>	2005=100.0.
<b>Revision</b>	Input and Output price indices are fixed base year indices. These indices are updated every five (5) years in years ending in 0 or 5. The most recent revision is with base year 2005=100.0, with January 2009 as first reference month.
<b>Statistical classification</b>	According to the common methodology of the member states of EU and Eurostat, the groups of products of the Agricultural Price Indices follow the same classification of the groups as in EAA (Economic Agricultural Accounts).
<b>Geographical coverage</b>	The indices cover the whole of the country.
<b>Coverage of economic activities</b>	The Input and Output Price Indices cover the transactions for products and services in the sector of agriculture and livestock. In addition, the olive oil and must – wine transactions are covered, which are included in the manufacturing sector when their production – manufacturing process takes place at the level of agricultural unit and thus it is considered to be an activity of the agricultural sector.
<b>Seasonality</b>	Seasonality influences the agricultural and livestock production and as a result some products are not available every month in a calendar year. Therefore, the annual weighing coefficients are divided only in the months when the products are available.
<b>Statistical survey</b>	<p>The sources of price collection are the agricultural cooperatives (unions), which collect the final products, as well as the commercial and the industrial enterprises, which buy the final products directly from the producers.</p> <p>The price data for the output price index are collected from approximately 734 sources and those for input prices are collected from approximately 709 sources.</p>
<b>Publication of data</b>	The Input – Output Price Indices with the new base year (2005) are being released since March 2009, with January 2009 as first reference month. The time series with base year 2005=100.0 are available from January 2000 onwards.
<b>References</b>	More information on the methodology concerning the compilation and calculation of the indices and for the time series is available on the EL.STAT. website ( <a href="http://www.statistics.gr">www.statistics.gr</a> ).