



HELLENIC REPUBLIC



HELLENIC STATISTICAL AUTHORITY

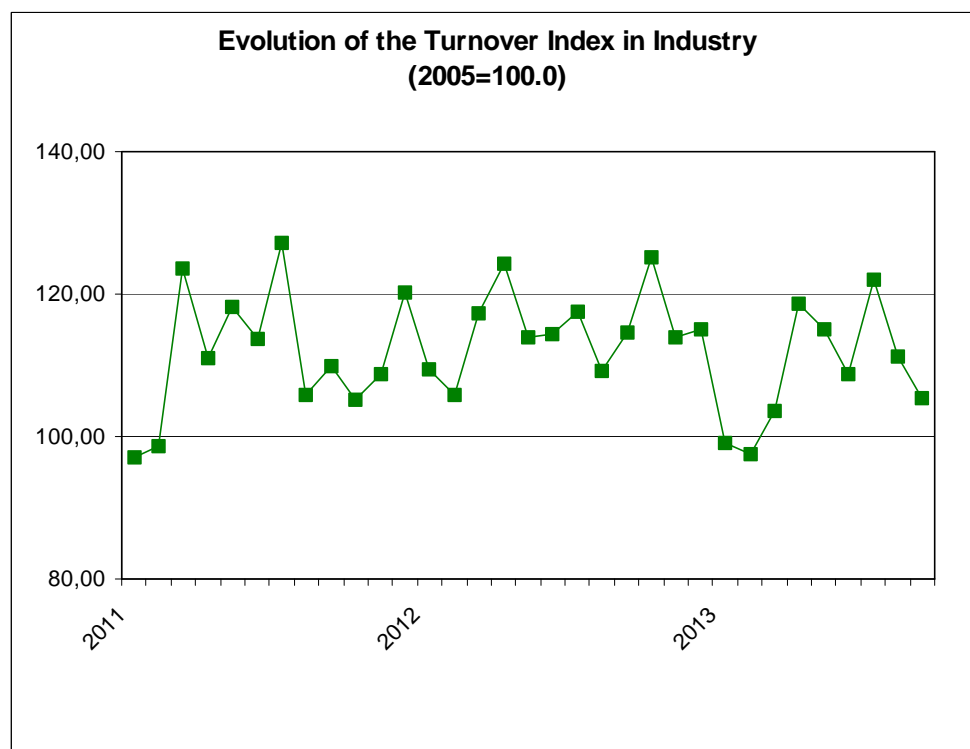
Piraeus, 19 November 2013

PRESS RELEASE

TURNOVER INDEX IN INDUSTRY: September 2013

The Turnover Index in Industry (both domestic and non-domestic market) in September 2013 compared with September 2012 recorded a decline of 8.0%. In September 2012, the annual rate of change of the Turnover Index in Industry was 3.9%.

The average Turnover Index in Industry for the 12-month period from October 2012 to September 2013, as compared to the 12-month period from October 2011 to September 2012, decreased by 1.9%. In September 2012, the corresponding average rate of change of the Turnover Index in Industry was 1.0%.



Information:

Economic and Short-Term
Indicators Division

Production Indices Section

Diamantaki Aikaterini
Karathanos Panagiotis
Tel: 0030 213 1352122
Fax: 0030 213 1352738

The decrease of the Turnover Index in Industry by 8.0% in September 2013, compared with September 2012, was due to the annual changes as following:

- by Industrial Sections

- Mining and quarrying turnover decreased by 16.0 %.
- Manufacturing turnover decreased by 7.9%.

In addition, the decrease of the Turnover Index in Industry by 8.0% in September 2013, compared with September 2012, was due to the annual changes of the indices of the markets as following:

- The Turnover Index in Industry for the domestic market decreased by 6.4%.
- The Turnover Index in Industry for the non-domestic market decreased by 10.9%.

The decrease of the Turnover Index in Industry for the non-domestic market by 10.9% in September 2013, compared with September 2012, was due to the annual changes as following:

- The Turnover Index in Industry for the Eurozone countries increased by 2.3%.
- The Turnover Index in Industry for the non-Eurozone countries decreased by 15.3%.

Table 1: Annual rates of change of the Turnover Index in Industry (Total Market)

Base year: 2005=100.0

Branch code	Branch name	September			Rate of change (%)	
		2013*	2012	2011	2013/2012	2012/2011
	OVERALL INDEX	105.4	114.6	110.3	-8.0	3.9
B	MINING AND QUARRYING	100.9	120.1	95.9	-16.0	25.3
05	Mining of coal and lignite	235.2	56.5	131.9	316.3	-57.2
06	Extraction of crude petroleum and natural gas	0.0	504.9	0.0	-100.0	0.0
07	Mining of metal ores	79.7	85.2	80.3	-6.5	6.2
08	Other mining and quarrying products	104.3	103.4	103.5	0.9	-0.1
C	MANUFACTURING	103.8	112.7	108.8	-7.9	3.6
10	Food	103.4	102.7	111.3	0.7	-7.7
11	Beverages	87.1	79.9	105.4	9.1	-24.3
12	Tobacco products	77.5	65.9	90.5	17.6	-27.2
13	Textiles	32.5	32.9	40.9	-1.1	-19.7
14	Wearing apparel	38.2	43.9	55.8	-12.9	-21.2
15	Leather and related products	32.4	32.8	70.1	-1.1	-53.2
16	Wood and cork	22.5	37.7	48.8	-40.4	-22.6
17	Paper and paper products	99.8	100.7	114.0	-0.9	-11.7
18	Printing and recording services	44.0	46.9	54.3	-6.3	-13.6
19	Coke and refined petroleum products	175.0	206.4	153.8	-15.2	34.2
20	Chemicals and chemical products	94.6	79.9	99.0	18.4	-19.3
21	Basic pharmaceutical products and pharmaceutical preparations	133.4	113.2	130.7	17.9	-13.4
22	Rubber and plastic products	97.7	92.0	107.5	6.1	-14.4
23	Other non-metallic mineral products	42.2	39.8	47.3	6.0	-15.9
24	Basic metals	84.3	97.1	115.1	-13.2	-15.6
25	Fabricated metal products	60.7	72.9	88.2	-16.7	-17.4
26	Computers, electronic and optical products	60.7	31.8	40.5	91.0	-21.5
27	Electrical equipment	93.9	101.3	99.9	-7.3	1.4
28	Machinery and equipment n. e. c.	59.5	57.4	75.1	3.8	-23.7
29	Motor vehicles, trailers and semi-trailers	44.9	51.6	56.4	-13.0	-8.5
30	Other transport equipment	24.8	29.1	57.7	-14.6	-49.6
31	Furniture	37.7	45.3	75.9	-16.8	-40.3
32	Other manufactured goods	66.8	59.1	70.4	13.1	-16.0
33	Repair and installation services of machinery and equipment	44.3	47.9	66.1	-7.5	-27.5
	MAIN INDUSTRIAL GROUPINGS					
1	Energy	174.6	207.0	153.2	-15.7	35.1
2	Intermediate goods	82.4	84.2	97.2	-2.1	-13.4
3	Capital goods	43.5	46.4	64.9	-6.2	-28.5
4	Consumer Durables	41.6	49.2	71.4	-15.5	-31.0
5	Consumer Non-Durables	85.6	83.3	96.0	2.7	-13.2

* Provisional data

Note:

1. The indices are calculated with infinite decimal figures and are rounded up to one decimal figure when published.
2. Percentage changes are calculated on the basis of indices with infinite decimal figures and are rounded up to one decimal figure when published.

Table 2: Annual rates of change of the Turnover Index in Industry for the Domestic Market

Base year: 2005=100.0

Branch code	Branch name	September			Rate of change (%)	
		2013*	2012	2011	2013/2012	2012/2011
	OVERALL INDEX	78.1	83.4	91.3	-6.4	-8.6
B	MINING AND QUARRYING	82.3	98.2	68.6	-16.3	43.2
05	Mining of coal and lignite	235.2	56.5	131.9	316.3	-57.2
06	Extraction of crude petroleum and natural gas	0.0	504.9	0.0	-100.0	0.0
07	Mining of metal ores	106.1	107.3	107.7	-1.1	-0.4
08	Other mining and quarrying products	74.1	57.2	64.6	29.5	-11.5
C	MANUFACTURING	76.9	82.0	90.3	-6.2	-9.2
10	Food	101.0	99.8	109.1	1.2	-8.5
11	Beverages	84.5	78.4	106.1	7.8	-26.1
12	Tobacco products	50.9	48.4	62.2	5.2	-22.2
13	Textiles	28.5	25.9	34.5	10.0	-24.8
14	Wearing apparel	30.7	36.0	57.6	-14.8	-37.5
15	Leather and related products	35.6	36.2	65.1	-1.5	-44.5
16	Wood and cork	20.2	33.4	48.2	-39.6	-30.6
17	Paper and paper products	94.7	93.8	107.5	1.0	-12.8
18	Printing and recording services	41.4	46.4	51.1	-10.8	-9.1
19	Coke and refined petroleum products	115.8	129.2	122.2	-10.4	5.7
20	Chemicals and chemical products	61.2	61.9	75.8	-1.0	-18.4
21	Basic pharmaceutical products and pharmaceutical preparations	79.2	66.5	94.6	19.1	-29.7
22	Rubber and plastic products	69.7	73.2	84.7	-4.8	-13.6
23	Other non-metallic mineral products	32.2	31.9	46.6	1.1	-31.6
24	Basic metals	53.0	62.8	71.7	-15.5	-12.4
25	Fabricated metal products	44.6	57.6	72.4	-22.5	-20.4
26	Computers, electronic and optical products	9.2	12.1	11.1	-24.2	9.0
27	Electrical equipment	57.7	69.3	79.4	-16.6	-12.7
28	Machinery and equipment n. e. c.	26.5	30.4	38.8	-12.8	-21.8
29	Motor vehicles, trailers and semi-trailers	20.4	37.8	35.8	-46.0	5.6
30	Other transport equipment	2.3	6.6	23.8	-65.3	-72.3
31	Furniture	34.0	41.7	72.2	-18.5	-42.3
32	Other manufactured goods	46.2	42.9	59.9	7.9	-28.4
33	Repair and installation services of machinery and equipment	44.3	47.9	66.1	-7.5	-27.5
	MAIN INDUSTRIAL GROUPINGS					
1	Energy	115.7	130.5	121.7	-11.3	7.2
2	Intermediate goods	61.7	64.1	76.0	-3.8	-15.6
3	Capital goods	26.2	34.5	50.1	-24.1	-31.0
4	Consumer Durables	34.9	42.5	71.6	-18.0	-40.7
5	Consumer Non-Durables	77.9	76.3	90.7	2.1	-15.8

* Provisional data

Note:

1. The indices are calculated with infinite decimal figures and are rounded up to one decimal figure when published.
2. Percentage changes are calculated on the basis of indices with infinite decimal figures and are rounded up to one decimal figure when published.

Table 3: Annual rates of change of the Turnover Index in Industry for the Non - Domestic Market

Base year: 2005=100.0

Branch code	Branch name	September			Rate of change (%)	
		2013*	2012	2011	2013/2012	2012/2011
	OVERALL INDEX	187.7	210.6	165.7	-10.9	27.0
B	MINING AND QUARRYING	122.0	148.1	134.4	-17.7	10.2
05	Mining of coal and lignite	0.0	0.0	0.0	0.0	0.0
06	Extraction of crude petroleum and natural gas	0.0	0.0	0.0	0.0	0.0
07	Mining of metal ores	56.0	65.5	55.8	-14.5	17.5
08	Other mining and quarrying products	140.3	171.1	156.3	-18.0	9.5
C	MANUFACTURING	185.0	207.3	162.8	-10.7	27.3
10	Food	113.1	114.0	118.8	-0.8	-4.0
11	Beverages	122.8	102.0	96.0	20.4	6.3
12	Tobacco products	148.1	112.4	165.5	31.8	-32.1
13	Textiles	37.6	41.5	49.1	-9.3	-15.5
14	Wearing apparel	46.1	51.8	55.2	-11.0	-6.2
15	Leather and related products	3.6	2.6	114.4	39.5	-97.7
16	Wood and cork	38.0	66.4	52.7	-42.8	26.0
17	Paper and paper products	142.7	158.3	169.8	-9.8	-6.8
18	Printing and recording services	279.7	95.4	360.2	193.4	-73.5
19	Coke and refined petroleum products	367.2	457.4	256.4	-19.7	78.3
20	Chemicals and chemical products	171.5	122.5	152.3	40.0	-19.6
21	Basic pharmaceutical products and pharmaceutical preparations	405.3	347.0	311.6	16.8	11.4
22	Rubber and plastic products	152.3	130.2	152.3	17.0	-14.5
23	Other non-metallic mineral products	106.9	94.1	48.6	13.6	93.5
24	Basic metals	116.2	132.2	158.9	-12.1	-16.8
25	Fabricated metal products	119.5	130.8	148.2	-8.6	-11.8
26	Computers, electronic and optical products	93.9	43.7	58.1	115.1	-24.9
27	Electrical equipment	135.1	137.6	122.0	-1.8	12.8
28	Machinery and equipment n. e. c.	97.7	88.7	117.3	10.2	-24.4
29	Motor vehicles, trailers and semi-trailers	179.1	112.9	158.7	58.7	-28.9
30	Other transport equipment	36.9	40.5	55.1	-9.0	-26.4
31	Furniture	135.7	155.6	174.3	-12.8	-10.7
32	Other manufactured goods	136.2	119.2	108.2	14.3	10.1
33	Repair and installation services of machinery and equipment	0.0	0.0	0.0	0.0	0.0
	MAIN INDUSTRIAL GROUPINGS					
1	Energy	367.2	457.4	256.4	-19.7	78.3
2	Intermediate goods	124.3	125.7	140.3	-1.1	-10.4
3	Capital goods	103.2	81.9	100.4	26.1	-18.5
4	Consumer Durables	62.1	70.5	70.4	-11.9	0.1
5	Consumer Non-Durables	113.6	108.5	114.9	4.7	-5.6

* Provisional data

Note:

1. The indices are calculated with infinite decimal figures and are rounded up to one decimal figure when published.
2. Percentage changes are calculated on the basis of indices with infinite decimal figures and are rounded up to one decimal figure when published.

Table 4: Annual rates of change of the Turnover Index in Industry for the Eurozone Countries

Base year: 2005=100.0

Branch code	Branch name	September			Rate of change (%)	
		2013*	2012	2011	2013/2012	2012/2011
	OVERALL INDEX	151.9	148.5	144.7	2.3	2.7
	INDUSTRIAL SECTIONS					
B	MINING AND QUARRYING	114.2	141.5	141.3	-19.3	0.1
C	MANUFACTURING	148.8	144.6	140.8	2.9	2.7
	MAIN INDUSTRIAL GROUPINGS					
1	Energy	1610.0	1293.6	422.7	24.5	206.0
2	Intermediate goods	140.7	146.1	163.6	-3.7	-10.7
3	Capital goods	47.6	36.1	58.4	32.0	-38.2
4	Consumer Durables	100.4	136.6	99.1	-26.5	37.9
5	Consumer Non-Durables	93.4	92.4	105.5	1.1	-12.4

* Provisional data

Table 5: Annual rates of change of the Turnover Index in Industry for the Non - Eurozone Countries

Base year: 2005=100.0

Branch code	Branch name	September			Rate of change (%)	
		2013*	2012	2011	2013/2012	2012/2011
	OVERALL INDEX	212.9	251.3	181.0	-15.3	38.8
	INDUSTRIAL SECTIONS					
B	MINING AND QUARRYING	129.9	154.4	128.8	-15.9	19.9
C	MANUFACTURING	210.4	248.4	178.6	-15.3	39.1
	MAIN INDUSTRIAL GROUPINGS					
1	Energy	329.9	432.2	251.4	-23.7	71.9
2	Intermediate goods	120.8	118.6	128.3	1.9	-7.6
3	Capital goods	174.5	142.9	154.1	22.1	-7.3
4	Consumer Durables	60.5	56.2	50.1	7.7	12.0
5	Consumer Non-Durables	131.6	118.5	122.0	11.1	-2.9

* Provisional data

Note:

1. The indices are calculated with infinite decimal figures and are rounded up to one decimal figure when published.
2. Percentage changes are calculated on the basis of indices with infinite decimal figures and are rounded up to one decimal figure when published.

Table 6: Evolution of the Turnover Index in Industry (Total Market)

Base year: 2005=100.0

Year-month	Overall Index (Total Market)		Turnover Index in Industry for the Domestic Market		Turnover Index in Industry for the Non - Domestic Market	
	Index	Annual rate of change (%)	Index	Annual rate of change (%)	Index	Annual rate of change (%)
2012 IX	114.6	3.9	83.4	-8.6	210.6	27.0
X	125.2	18.9	90.7	6.3	230.8	40.5
XI	113.8	4.5	76.5	-19.7	229.0	55.7
XII	115.0	-4.5	77.3	-26.1	231.9	40.0
2013 I	99.0	-9.6	69.2	-21.4	191.7	9.4
II	97.6	-7.8	71.7	-15.6	176.8	4.4
III	103.6	-11.7	71.2	-22.5	203.2	4.2
IV	118.6	-4.5	90.5	-8.7	204.7	1.7
V	115.2	1.1	74.7	-13.2	240.7	21.3
VI	108.8	-5.0	81.8	-8.0	190.5	-0.8
VII	122.1	4.0	91.2	-4.5	216.3	18.1
VIII	111.3	1.9	79.1	-8.5	211.1	17.6
IX*	105.4	-8.0	78.1	-6.4	187.7	-10.9

*Provisional data

Table 7: Evolution of the Turnover Index in Industry for the Non – Domestic Market

Base year: 2005=100.0

Year-month	Overall Index (Non - Domestic Market)		Turnover Index in Industry for Eurozone Countries		Turnover Index in Industry for Non - Eurozone Countries	
	Index	Annual rate of change (%)	Index	Annual rate of change (%)	Index	Annual rate of change (%)
2012 IX	210.6	27.0	148.5	2.7	251.3	38.8
X	230.8	40.5	171.0	7.7	270.1	59.9
XI	229.0	55.7	193.9	29.1	254.2	72.9
XII	231.9	40.0	137.6	-12.7	293.4	67.2
2013 I	191.7	9.4	141.7	13.0	221.9	8.2
II	176.8	4.4	135.5	3.0	203.4	3.7
III	203.2	4.2	150.3	-10.6	238.5	10.2
IV	204.7	1.7	184.4	32.4	219.3	-8.9
V	240.7	21.3	197.9	15.3	268.3	23.8
VI	190.5	-0.8	155.3	-2.7	214.6	0.2
VII	216.3	18.1	156.5	6.8	254.1	23.5
VIII	211.1	17.6	140.7	12.5	256.0	20.4
IX*	187.7	-10.9	151.9	2.3	212.9	-15.3

*Provisional data

Note: 1. The indices are calculated with infinite decimal figures and are rounded up to one decimal figure when published.
2. Percentage changes are calculated on the basis of indices with infinite decimal figures and are rounded up to one decimal figure when published.

Table 8: Average indices and rates of change (%) of the 12-month periods of Turnover Index in Industry (Total Market)

Base year: 2005=100.0

Branch code	Branch name	Average Indices of 12-month periods			Rate of change (%) 2013/2012	Rate of change (%) 2012/2011
		Oct. 2012- Sept. 2013*	Oct. 2011- Sept. 2012	Oct. 2010- Sept. 2011		
	OVERALL INDEX	111,3	113,4	112,3	-1,9	1,0
B	MINING AND QUARRYING	89,6	89,5	98,6	0,1	-9,2
05	Mining of coal and lignite	72,7	64,5	137,3	12,8	-53,0
06	Extraction of crude petroleum and natural gas	142,9	201,3	175,1	-29,0	15,0
07	Mining of metal ores	77,9	80,8	80,6	-3,6	0,3
08	Other mining and quarrying products	89,0	84,7	94,4	5,1	-10,2
C	MANUFACTURING	109,9	112,0	110,7	-1,9	1,2
10	Food	103,5	106,4	109,5	-2,7	-2,8
11	Beverages	83,7	88,6	101,0	-5,6	-12,3
12	Tobacco products	74,1	75,9	78,8	-2,3	-3,8
13	Textiles	32,8	34,4	46,7	-4,7	-26,2
14	Wearing apparel	41,3	41,9	51,5	-1,4	-18,7
15	Leather and related products	25,2	29,4	53,5	-14,1	-45,1
16	Wood and cork	28,5	38,2	50,4	-25,5	-24,2
17	Paper and paper products	99,8	102,2	113,4	-2,3	-9,9
18	Printing and recording services	44,2	48,8	65,1	-9,5	-25,0
19	Coke and refined petroleum products	198,5	194,8	165,0	1,9	18,1
20	Chemicals and chemical products	86,5	84,7	96,2	2,2	-12,0
21	Basic pharmaceutical products and pharmaceutical preparations	135,9	124,6	130,1	9,1	-4,2
22	Rubber and plastic products	95,1	94,2	100,9	1,0	-6,6
23	Other non-metallic mineral products	37,4	39,2	55,2	-4,6	-29,0
24	Basic metals	90,6	104,7	116,5	-13,5	-10,2
25	Fabricated metal products	64,4	75,8	83,9	-15,0	-9,7
26	Computers, electronic and optical products	34,8	33,4	38,4	4,1	-13,0
27	Electrical equipment	89,8	90,9	89,6	-1,3	1,4
28	Machinery and equipment n. e. c.	70,6	69,9	88,8	1,0	-21,3
29	Motor vehicles, trailers and semi-trailers	39,6	45,2	62,9	-12,5	-28,1
30	Other transport equipment	21,0	29,1	44,6	-27,9	-34,9
31	Furniture	33,0	42,7	64,1	-22,9	-33,3
32	Other manufactured goods	64,9	65,0	72,8	-0,2	-10,6
33	Repair and installation services of machinery and equipment	42,7	48,0	53,5	-11,0	-10,4
	MAIN INDUSTRIAL GROUPINGS					
1	Energy	198,0	194,5	165,0	1,8	17,9
2	Intermediate goods	81,2	85,4	96,3	-4,9	-11,3
3	Capital goods	42,3	49,9	60,4	-15,3	-17,4
4	Consumer Durables	41,0	49,3	61,6	-16,8	-20,0
5	Consumer Non-Durables	85,8	88,5	94,8	-3,0	-6,6

*Provisional data

Note: 1. The indices are calculated with infinite decimal figures and are rounded up to one decimal figure when published.
2. Percentage changes are calculated on the basis of indices with infinite decimal figures and are rounded up to one decimal figure when published.

METHODOLOGICAL NOTES

Generally	The Turnover Index is being compiled since 2006.
Purpose of the index	The purpose of this index is to measure the monthly activity of the industrial sector in terms of value. Turnover comprises the totals invoiced (without VAT) by the observation units during the reference period and corresponds to the market sales of goods or services supplied to third parties. The purposes and the characteristics of the Turnover Index apply, as well, to the indices for the distinction between domestic and non-domestic turnover.
Legal basis	The compilation and publication of the Turnover Index is based on the framework of requirements of the Council Regulation (EC) No 1165/98 concerning short-term statistics (STS-R), as well as the amendment Regulation (EC) No 1158/05 of the European Parliament and Council, amending the Council Regulation (EC) No 1165/98. Furthermore, this index is governed by the Regulation (EEC) No.1893/2006 of the European Parliament and of the Council, by the Commission Regulation (EEC) No.656/2007 and by the Regulation (EEC) No.451/2008 of the Council.
Reference period	Month
Base year	2005=100.0.
Revision	The last revision of the Turnover Index in Industry with base year 2005=100.0 is done in the framework of the Short – Term Statistics (STS) Council Regulation (EC) No 1165/98 concerning short-term statistics. According to this regulation the index in question is updated every five years, in years ending in 0 or 5.
Statistical classifications	At the level of categories of economic activities the new Eurostat classification NACE Rev. 2 was used (Regulation 1893/2006), while at the level of main industrial groups, the allocation of two-digit and three-digit NACE Rev. 2 headings to categories of aggregate classification was used, in accordance with the Commission Regulation 656/2007. At product level, the new Eurostat classification CPA 2008 was used, according to the Council Regulation 451/2008.
Geographical coverage	The Index covers the whole country.
Coverage of economic activities	The Turnover Index in Industry covers the whole country and is compiled for all activities listed in Sections C (mining and quarrying) and D (manufacturing) of the NACE Rev.2 classification.
Computation of the Index	The Turnover Index in Industry is a fixed base index. This index is calculated initially at the four-digit level of economic activity and subsequently, with the implementation of appropriate weighting coefficients, the index is calculated at higher levels (three-level, two-level and one-level of economic activity) or at the level of Main Industrial Groupings (MIGs).
Publication of data	The Turnover Index with base year 2005=100.0 is being released since April 2009 with January 2009 as first reference month. Data with base year 2005=100.0 are available from January 2000 onwards.
References	More information about the methodology concerning the compilation and calculation of the index and for the time series is available on the Hellenic Statistical Authority (ELSTAT) website (www.statistics.gr).