



HELLENIC REPUBLIC



HELLENIC STATISTICAL AUTHORITY

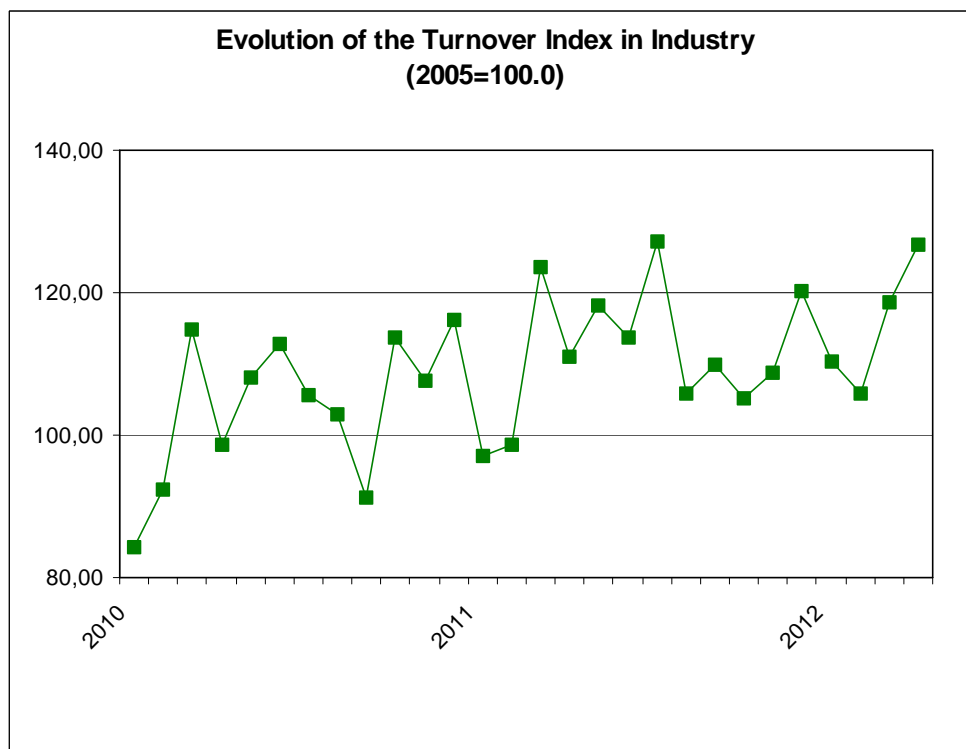
Piraeus, 19 June 2012

PRESS RELEASE

TURNOVER INDEX IN INDUSTRY: April 2012

The Turnover Index in Industry (both domestic and non-domestic market) in April 2012 compared with April 2011 recorded an increase of 14.1%. In April 2011, the annual rate of change of the Turnover Index in Industry was 12.6%.

The average Turnover Index in Industry for the 12-month period from May 2011 to April 2012, as compared to the 12-month period from May 2010 to April 2011, increased by 6.2%. In April 2011, the corresponding average rate of change of the Turnover Index in Industry was 7.8%.



Information:

Economic and Short-Term
Indicators Division

Production Indices Section

Diamantaki Aikaterini
Tel: 0030 210 4852122
Fax: 0030 210 4852738

The increase of the Turnover Index in Industry by 14.1% in April 2012, compared with April 2011, was due to the annual changes as following:

- by Industrial Sections

- Mining and quarrying turnover decreased by 13.2%.
- Manufacturing turnover increased by 14.5%.

In addition, the increase of the Turnover Index in Industry by 14.1% in April 2012, compared with April 2011, was due to the annual changes of the indices of the markets as following:

- The Turnover Index in Industry for the domestic market increased by 10.4%.
- The Turnover Index in Industry for the non-domestic market increased by 21.3%.

The increase of the Turnover Index in Industry for the non-domestic market by 21.3% in April 2012, compared with April 2011, was due to the annual changes as following:

- The Turnover Index in Industry for the Eurozone countries decreased by 15.0%.
- The Turnover Index in Industry for the non-Eurozone countries increased by 41.4%.

Table 1: Annual rates of change of the Turnover Index in Industry (Total Market)

Base year: 2005=100.0

Branch code	Branch name	April			Rate of change (%)	
		2012*	2011	2010	2012/2011	2011/2010
	OVERALL INDEX	126.7	111.0	98.6	14.1	12.6
B	MINING AND QUARRYING	68.3	78.7	104.5	-13.2	-24.7
05	Mining of coal and lignite	53.9	80.3	162.8	-32.9	-50.7
06	Extraction of crude petroleum and natural gas	0.0	0.0	0.0	0.0	0.0
07	Mining of metal ores	66.5	77.5	90.2	-14.2	-14.1
08	Other mining and quarrying products	74.3	84.3	111.2	-11.9	-24.1
C	MANUFACTURING	125.6	109.7	96.9	14.5	13.2
10	Food	103.2	106.8	102.7	-3.4	4.0
11	Beverages	95.9	103.0	99.3	-6.9	3.7
12	Tobacco products	87.2	75.2	74.9	15.9	0.4
13	Textiles	39.6	52.4	55.5	-24.5	-5.5
14	Wearing apparel	38.3	53.7	56.1	-28.6	-4.4
15	Leather and related products	43.4	68.1	81.4	-36.3	-16.3
16	Wood and cork	38.4	45.8	59.5	-16.1	-22.9
17	Paper and paper products	95.1	107.4	115.6	-11.4	-7.1
18	Printing and recording services	48.8	68.6	84.8	-28.8	-19.1
19	Coke and refined petroleum products	251.3	171.4	120.5	46.6	42.2
20	Chemicals and chemical products	91.9	91.6	103.8	0.3	-11.7
21	Basic pharmaceutical products and pharmaceutical preparations	122.4	124.4	127.0	-1.6	-2.1
22	Rubber and plastic products	95.8	99.6	103.0	-3.8	-3.4
23	Other non-metallic mineral products	39.8	47.3	75.2	-15.8	-37.1
24	Basic metals	95.1	114.3	99.3	-16.8	15.1
25	Fabricated metal products	68.4	75.5	70.5	-9.4	7.1
26	Computers, electronic and optical products	29.3	39.5	49.8	-25.8	-20.6
27	Electrical equipment	76.1	67.9	80.9	12.1	-16.1
28	Machinery and equipment n. e. c.	66.4	102.9	67.0	-35.5	53.4
29	Motor vehicles, trailers and semi-trailers	35.6	25.6	28.9	39.0	-11.4
30	Other transport equipment	28.8	28.2	47.0	2.3	-40.1
31	Furniture	38.8	56.7	68.9	-31.6	-17.7
32	Other manufactured goods	69.7	87.4	84.1	-20.3	4.0
33	Repair and installation services of machinery and equipment	47.6	51.9	49.8	-8.2	4.1
	MAIN INDUSTRIAL GROUPINGS					
1	Energy	250.0	170.6	120.2	46.5	41.9
2	Intermediate goods	81.1	90.6	94.7	-10.5	-4.3
3	Capital goods	46.1	54.9	49.3	-16.0	11.5
4	Consumer Durables	45.3	56.8	63.4	-20.2	-10.3
5	Consumer Non-Durables	89.2	94.2	94.7	-5.3	-0.6

* Provisional data

Note:

1. The indices are calculated with infinite decimal figures and are rounded up to one decimal figure when published.
2. Percentage changes are calculated on the basis of indices with infinite decimal figures and are rounded up to one decimal figure when published.

Table 2: Annual rates of change of the Turnover Index in Industry for the Domestic Market

Base year: 2005=100.0

Branch code	Branch name	2012*	April		Rate of change (%)	
			2011	2010	2012/2011	2011/2010
	OVERALL INDEX	101.8	92.2	93.8	10.4	-1.7
B	MINING AND QUARRYING	42.2	58.0	82.0	-27.3	-29.3
05	Mining of coal and lignite	53.9	80.3	162.8	-32.9	-50.7
06	Extraction of crude petroleum and natural gas	0.0	0.0	0.0	0.0	0.0
07	Mining of metal ores	90.6	109.8	105.7	-17.4	3.8
08	Other mining and quarrying products	38.6	54.7	80.1	-29.5	-31.8
C	MANUFACTURING	101.2	91.4	92.6	10.8	-1.4
10	Food	99.9	104.7	100.8	-4.6	3.8
11	Beverages	96.0	103.3	98.9	-7.0	4.4
12	Tobacco products	63.1	64.0	71.6	-1.5	-10.6
13	Textiles	29.7	37.1	47.6	-19.9	-21.9
14	Wearing apparel	42.1	59.1	70.0	-28.7	-15.6
15	Leather and related products	47.6	64.9	72.1	-26.6	-10.0
16	Wood and cork	31.1	39.5	56.0	-21.4	-29.4
17	Paper and paper products	90.5	103.2	112.2	-12.3	-8.0
18	Printing and recording services	46.9	67.3	82.8	-30.3	-18.7
19	Coke and refined petroleum products	195.2	138.7	112.5	40.8	23.3
20	Chemicals and chemical products	70.9	77.1	92.1	-8.0	-16.3
21	Basic pharmaceutical products and pharmaceutical preparations	93.1	94.6	99.4	-1.6	-4.8
22	Rubber and plastic products	64.7	76.1	89.6	-15.0	-15.0
23	Other non-metallic mineral products	33.5	49.4	72.6	-32.2	-32.0
24	Basic metals	59.4	57.0	81.3	4.2	-29.8
25	Fabricated metal products	54.2	63.1	62.7	-14.1	0.7
26	Computers, electronic and optical products	8.2	12.2	31.8	-32.6	-61.7
27	Electrical equipment	49.8	69.9	82.2	-28.8	-15.0
28	Machinery and equipment n. e. c.	42.0	63.8	68.3	-34.2	-6.6
29	Motor vehicles, trailers and semi-trailers	22.2	10.8	20.7	106.5	-47.9
30	Other transport equipment	7.6	4.9	170.8	56.0	-97.2
31	Furniture	34.4	53.5	66.5	-35.7	-19.6
32	Other manufactured goods	51.8	64.4	68.1	-19.6	-5.4
33	Repair and installation services of machinery and equipment	47.6	51.9	49.8	-8.2	4.1
	MAIN INDUSTRIAL GROUPINGS					
1	Energy	193.9	137.9	112.2	40.6	22.9
2	Intermediate goods	59.8	68.7	85.1	-13.0	-19.2
3	Capital goods	35.6	41.4	67.6	-14.1	-38.7
4	Consumer Durables	40.6	55.5	65.0	-26.7	-14.7
5	Consumer Non-Durables	84.6	90.8	92.5	-6.8	-1.8

* Provisional data

Note:

1. The indices are calculated with infinite decimal figures and are rounded up to one decimal figure when published.
2. Percentage changes are calculated on the basis of indices with infinite decimal figures and are rounded up to one decimal figure when published.

Table 3: Annual rates of change of the Turnover Index in Industry for the Non - Domestic Market

Base year: 2005=100.0

Branch code	Branch name	April			Rate of change (%)	
		2012*	2011	2010	2012/2011	2011/2010
	OVERALL INDEX	202.9	167.3	119.1	21.3	40.5
B	MINING AND QUARRYING	112.9	117.3	140.2	-3.8	-16.3
05	Mining of coal and lignite	0.0	0.0	0.0	0.0	0.0
06	Extraction of crude petroleum and natural gas	0.0	0.0	0.0	0.0	0.0
07	Mining of metal ores	44.9	48.6	76.2	-7.6	-36.2
08	Other mining and quarrying products	131.9	136.5	158.0	-3.4	-13.6
C	MANUFACTURING	200.5	164.7	116.0	21.7	42.0
10	Food	118.2	117.0	111.2	1.0	5.1
11	Beverages	91.2	97.3	104.0	-6.2	-6.4
12	Tobacco products	151.1	104.8	83.8	44.1	25.2
13	Textiles	52.2	71.9	65.7	-27.4	9.5
14	Wearing apparel	35.3	48.4	44.9	-27.2	8.0
15	Leather and related products	5.2	96.9	164.4	-94.6	-41.1
16	Wood and cork	88.2	87.9	82.5	0.3	6.7
17	Paper and paper products	133.6	142.9	144.7	-6.5	-1.3
18	Printing and recording services	225.8	192.5	274.9	17.3	-30.0
19	Coke and refined petroleum products	433.4	277.7	146.6	56.1	89.5
20	Chemicals and chemical products	140.3	124.8	130.8	12.5	-4.6
21	Basic pharmaceutical products and pharmaceutical preparations	269.4	273.5	265.1	-1.5	3.2
22	Rubber and plastic products	158.4	147.5	132.4	7.4	11.4
23	Other non-metallic mineral products	80.5	31.0	91.3	160.1	-66.1
24	Basic metals	131.7	172.2	117.7	-23.5	46.3
25	Fabricated metal products	122.3	122.6	101.6	-0.2	20.6
26	Computers, electronic and optical products	41.9	56.0	57.8	-25.1	-3.1
27	Electrical equipment	105.8	62.9	76.4	68.3	-17.7
28	Machinery and equipment n. e. c.	99.9	156.2	61.3	-36.0	154.6
29	Motor vehicles, trailers and semi-trailers	101.4	108.1	73.7	-6.2	46.6
30	Other transport equipment	48.0	57.3	61.9	-16.2	-7.4
31	Furniture	170.3	146.7	181.1	16.1	-19.0
32	Other manufactured goods	140.9	172.1	136.2	-18.1	26.3
33	Repair and installation services of machinery and equipment	0.0	0.0	0.0	0.0	0.0
	MAIN INDUSTRIAL GROUPINGS					
1	Energy	433.4	277.7	146.6	56.1	89.5
2	Intermediate goods	125.1	136.0	114.2	-8.0	19.0
3	Capital goods	77.1	100.3	62.1	-23.2	61.7
4	Consumer Durables	63.1	60.6	61.8	4.0	-1.9
5	Consumer Non-Durables	106.0	106.1	102.1	-0.1	3.9

* Provisional data

Note:

1. The indices are calculated with infinite decimal figures and are rounded up to one decimal figure when published.
2. Percentage changes are calculated on the basis of indices with infinite decimal figures and are rounded up to one decimal figure when published.

Table 4: Annual rates of change of the Turnover Index in Industry for the Eurozone Countries

Base year: 2005=100.0

Branch code	Branch name	2012*	April		Rate of change (%)	
			2011	2010	2012/2011	2011/2010
	OVERALL INDEX	137.9	162.2	119.4	-15.0	35.9
	INDUSTRIAL SECTIONS					
B	MINING AND QUARRYING	118.9	107.2	100.9	10.9	6.2
C	MANUFACTURING	134.7	159.2	116.6	-15.4	36.6
	MAIN INDUSTRIAL GROUPINGS					
1	Energy	1114.6	1861.5	384.9	-40.1	383.6
2	Intermediate goods	127.4	136.7	119.2	-6.8	14.7
3	Capital goods	58.3	90.3	47.1	-35.5	91.9
4	Consumer Durables	148.8	102.7	175.0	45.0	-41.3
5	Consumer Non-Durables	98.0	105.7	102.6	-7.3	3.0

* Provisional data

Table 5: Annual rates of change of the Turnover Index in Industry for the Non - Eurozone Countries

Base year: 2005=100.0

Branch code	Branch name	2012*	April		Rate of change (%)	
			2011	2010	2012/2011	2011/2010
	OVERALL INDEX	243.7	172.4	121.5	41.4	41.9
	INDUSTRIAL SECTIONS					
B	MINING AND QUARRYING	108.2	126.1	175.0	-14.2	-28.0
C	MANUFACTURING	241.7	170.1	118.3	42.1	43.8
	MAIN INDUSTRIAL GROUPINGS					
1	Energy	412.9	230.1	139.4	79.5	65.1
2	Intermediate goods	125.2	138.7	112.4	-9.7	23.3
3	Capital goods	100.2	112.5	79.4	-11.0	41.7
4	Consumer Durables	44.8	57.0	58.1	-21.3	-1.9
5	Consumer Non-Durables	114.4	105.5	96.3	8.5	9.5

* Provisional data

Note:

1. The indices are calculated with infinite decimal figures and are rounded up to one decimal figure when published.
2. Percentage changes are calculated on the basis of indices with infinite decimal figures and are rounded up to one decimal figure when published.

Table 6: Evolution of the Turnover Index in Industry (Total Market)

Base year: 2005=100.0

Year-month	Overall Index (Total Market)		Turnover Index in Industry for the Domestic Market		Turnover Index in Industry for the Non - Domestic Market	
	Index	Annual rate of change (%)	Index	Annual rate of change (%)	Index	Annual rate of change (%)
2011 IV	111.0	12.6	92.2	-1.7	167.3	40.5
V	118.4	9.7	90.8	-2.3	202.4	27.8
VI	113.8	1.0	92.4	-8.7	178.1	15.4
VII	127.3	20.5	102.8	4.5	200.6	50.9
VIII	106.1	3.0	91.3	1.4	150.6	1.8
IX	110.2	19.8	91.3	5.1	165.5	47.1
X	105.4	-8.1	85.6	-16.0	164.2	3.5
XI	109.0	0.5	95.5	0.3	146.8	-5.6
XII	120.8	2.8	105.1	2.2	166.1	-1.7
2012 I	110.3	13.5	88.9	4.0	175.4	33.5
II	105.8	7.2	85.9	-4.2	165.8	34.3
III	118.6	-4.1	92.9	-6.8	196.0	0.0
IV*	126.7	14.1	101.8	10.4	202.9	21.3

*Provisional data

Table 7: Evolution of the Turnover Index in Industry for the Non – Domestic Market

Base year: 2005=100.0

Year-month	Overall Index (Non - Domestic Market)		Turnover Index in Industry for Eurozone Countries		Turnover Index in Industry for Non - Eurozone Countries	
	Index	Annual rate of change (%)	Index	Annual rate of change (%)	Index	Annual rate of change (%)
2011 IV	167.3	40.5	162.2	35.9	172.4	41.9
V	202.4	27.8	165.5	21.0	227.6	31.8
VI	178.1	15.4	159.4	22.6	191.8	10.6
VII	200.6	50.9	151.3	14.7	232.1	69.9
VIII	150.6	1.8	133.4	16.7	162.4	-3.9
IX	165.5	47.1	144.6	43.0	180.8	50.3
X	164.2	3.5	159.7	4.9	168.4	1.6
XI	146.8	-5.6	149.4	1.1	147.3	-8.7
XII	166.1	-1.7	157.4	5.6	176.5	-2.2
2012 I	175.4	33.5	125.5	7.7	205.2	45.9
II	165.8	34.3	131.9	-13.6	190.7	74.1
III	196.0	0.0	163.8	1.3	219.3	-0.3
IV*	202.9	21.3	137.9	-15.0	243.7	41.4

*Provisional data

Note: 1. The indices are calculated with infinite decimal figures and are rounded up to one decimal figure when published.
2. Percentage changes are calculated on the basis of indices with infinite decimal figures and are rounded up to one decimal figure when published.

Table 8: Average indices and rates of change (%) of the 12-month periods of Turnover Index in Industry (Total Market)

Base year: 2005=100.0

Branch code	Branch name	Average Indices of 12-month periods			Rate of change (%) 2012/2011	Rate of change (%) 2011/2010
		May 2011- Apr. 2012*	May 2010- Apr. 2011	May 2009- Apr. 2010		
	OVERALL INDEX	114.4	107.7	99.9	6.2	7.8
B	MINING AND QUARRYING	94.2	102.3	99.4	-7.9	2.9
05	Mining of coal and lignite	113.7	144.3	175.2	-21.2	-17.6
06	Extraction of crude petroleum and natural gas	183.6	196.7	115.2	-6.7	70.8
07	Mining of metal ores	82.5	77.2	73.9	6.9	4.4
08	Other mining and quarrying products	89.0	98.0	98.7	-9.1	-0.8
C	MANUFACTURING	112.8	106.1	98.3	6.4	7.9
10	Food	107.8	109.0	110.6	-1.1	-1.5
11	Beverages	94.4	104.3	112.3	-9.5	-7.2
12	Tobacco products	82.5	74.1	95.7	11.4	-22.6
13	Textiles	39.4	49.3	55.5	-20.2	-11.0
14	Wearing apparel	45.7	53.9	67.2	-15.3	-19.8
15	Leather and related products	40.9	54.5	83.9	-25.0	-35.1
16	Wood and cork	44.4	55.4	67.0	-19.8	-17.3
17	Paper and paper products	104.8	112.1	113.7	-6.5	-1.4
18	Printing and recording services	52.8	72.9	92.0	-27.6	-20.8
19	Coke and refined petroleum products	188.1	149.1	115.3	26.2	29.3
20	Chemicals and chemical products	89.4	93.4	86.6	-4.3	7.9
21	Basic pharmaceutical products and pharmaceutical preparations	127.1	131.0	140.0	-3.0	-6.4
22	Rubber and plastic products	96.2	98.3	95.5	-2.1	3.0
23	Other non-metallic mineral products	42.4	64.7	86.7	-34.4	-25.4
24	Basic metals	111.4	107.6	83.2	3.5	29.3
25	Fabricated metal products	80.3	82.7	86.8	-2.9	-4.7
26	Computers, electronic and optical products	35.0	41.9	50.3	-16.5	-16.8
27	Electrical equipment	86.7	89.6	84.0	-3.2	6.6
28	Machinery and equipment n. e. c.	76.0	87.7	90.0	-13.3	-2.6
29	Motor vehicles, trailers and semi-trailers	49.5	64.1	69.3	-22.8	-7.5
30	Other transport equipment	33.1	45.0	66.3	-26.5	-32.2
31	Furniture	52.1	69.0	87.8	-24.5	-21.4
32	Other manufactured goods	68.3	76.3	81.7	-10.5	-6.6
33	Repair and installation services of machinery and equipment	49.8	52.4	63.4	-5.1	-17.3
	MAIN INDUSTRIAL GROUPINGS					
1	Energy	187.9	149.2	115.4	25.9	29.3
2	Intermediate goods	89.5	94.3	89.6	-5.0	5.2
3	Capital goods	54.0	60.2	69.6	-10.4	-13.4
4	Consumer Durables	55.3	64.7	76.1	-14.5	-14.9
5	Consumer Non-Durables	91.2	96.2	103.6	-5.2	-7.1

*Provisional data

Note: 1. The indices are calculated with infinite decimal figures and are rounded up to one decimal figure when published.
2. Percentage changes are calculated on the basis of indices with infinite decimal figures and are rounded up to one decimal figure when published.

METHODOLOGICAL NOTES

Generally	The Turnover Index is being compiled since 2006.
Purpose of the index	The purpose of this index is to measure the monthly activity of the industrial sector in terms of value. Turnover comprises the totals invoiced (without VAT) by the observation units during the reference period and corresponds to the market sales of goods or services supplied to third parties. The purposes and the characteristics of the Turnover Index apply, as well, to the indices for the distinction between domestic and non-domestic turnover.
Legal basis	The compilation and publication of the Turnover Index is based on the framework of requirements of the Council Regulation (EC) No 1165/98 concerning short-term statistics (STS-R), as well as the amendment Regulation (EC) No 1158/05 of the European Parliament and Council, amending the Council Regulation (EC) No 1165/98. Furthermore, this index is governed by the Regulation (EEC) No.1893/2006 of the European Parliament and of the Council, by the Commission Regulation (EEC) No.656/2007 and by the Regulation (EEC) No.451/2008 of the Council.
Reference period	Month
Base year	2005=100.0.
Revision	The last revision of the Turnover Index in Industry with base year 2005=100.0 is done in the framework of the Short – Term Statistics (STS) Council Regulation (EC) No 1165/98 concerning short-term statistics. According to this regulation the index in question is updated every five years, in years ending in 0 or 5.
Statistical classifications	At the level of categories of economic activities the new Eurostat classification NACE Rev. 2 was used (Regulation 1893/2006), while at the level of main industrial groups, the allocation of two-digit and three-digit NACE Rev. 2 headings to categories of aggregate classification was used, in accordance with the Commission Regulation 656/2007. At product level, the new Eurostat classification CPA 2008 was used, according to the Council Regulation 451/2008.
Geographical coverage	The Index covers the whole country.
Coverage of economic activities	The Turnover Index in Industry covers the whole country and is compiled for all activities listed in Sections C (mining and quarrying) and D (manufacturing) of the NACE Rev.2 classification.
Computation of the Index	The Turnover Index in Industry is a fixed base index. This index is calculated initially at the four-digit level of economic activity and subsequently, with the implementation of appropriate weighting coefficients, the index is calculated at higher levels (three-level, two-level and one-level of economic activity) or at the level of Main Industrial Groupings (MIGs).
Publication of data	The Turnover Index with base year 2005=100.0 is being released since April 2009 with January 2009 as first reference month. Data with base year 2005=100.0 are available from January 2000 onwards.
References	More information about the methodology concerning the compilation and calculation of the index and for the time series is available on the Hellenic Statistical Authority (ELSTAT) website (www.statistics.gr).