



HELLENIC REPUBLIC
HELLENIC STATISTICAL AUTHORITY

Piraeus, April 12, 2022

PRESS RELEASE

ISSUING OF MOTOR VEHICLE LICENSES: MARCH 2022

The Hellenic Statistical Authority announces that in March 2022, 17,661 road motor cars (both new and used from abroad) were put into circulation for the first time, recording a 5.6% increase compared with the corresponding month of 2021 when the number of road motor cars was 16,731. In March 2021, a 97.5% increase had been observed in comparison with the corresponding month of 2020 (Table 1, Graphs 1,2,3,5). A total number of 9,255 new cars were put into circulation in March 2022 compared with 10,017 in March 2021, recording a 7.6% decrease.

The new motorcycles over 50cc (both new and used from abroad) that were put into circulation for the first time in March 2022 amounted to 4,056, against 3,444 in 2021, thus recording a 17.8% increase. In March 2021, an 103.1% increase had been observed in comparison with the corresponding month of 2020 (Table 1, Graph 4). Out of the above motorcycles 3,724 were new, while the corresponding figure in March 2021 was 3,172, recording a 17.4% increase.

During the period January - March 2022, 50,226 road motor cars (both new and used from abroad) were put into circulation for the first time, representing an increase of 8.8% compared to the corresponding period of 2021 when the number of road motor cars was 46,178. During the period January - March 2021 a decrease of 2.6% had been observed in comparison with the corresponding period of 2020 (Table 3, Graphs 6,7). Out of the above number of road motor cars that were put into circulation, from January to March 2022, 24,612 were new, while the corresponding number during the respective period of 2021 was 25,874, recording a decrease of 4.9%.

During the period January - March 2022 the circulation of new motorcycles over 50cc (both new and used from abroad) amounted to 9,958 against 7,915 in 2021, thus representing a 25.8% increase. A increase of 17.9% had been observed during the period January - March 2021 in comparison with the corresponding period of 2020 (Table 3, Graphs 6,7). A total number of 9,001 new motorcycles were put into circulation, from January to March 2022, compared with 7,109 during the corresponding period of 2021, recording a 26.6% increase.

Information on methodological issues:

Sectoral Statistics Division

Transport Statistics Section

Pota Tzortzi, Konstantinos Menexes

Tel: +30 213 135 2187, +30 213 135 3055

e-mail: p.tzortzi@statistics.gr, k.menexes@statistics.gr

Information for data provision:

Tel: +30 213 135 2022

e-mail: data.dissem@statistics.gr

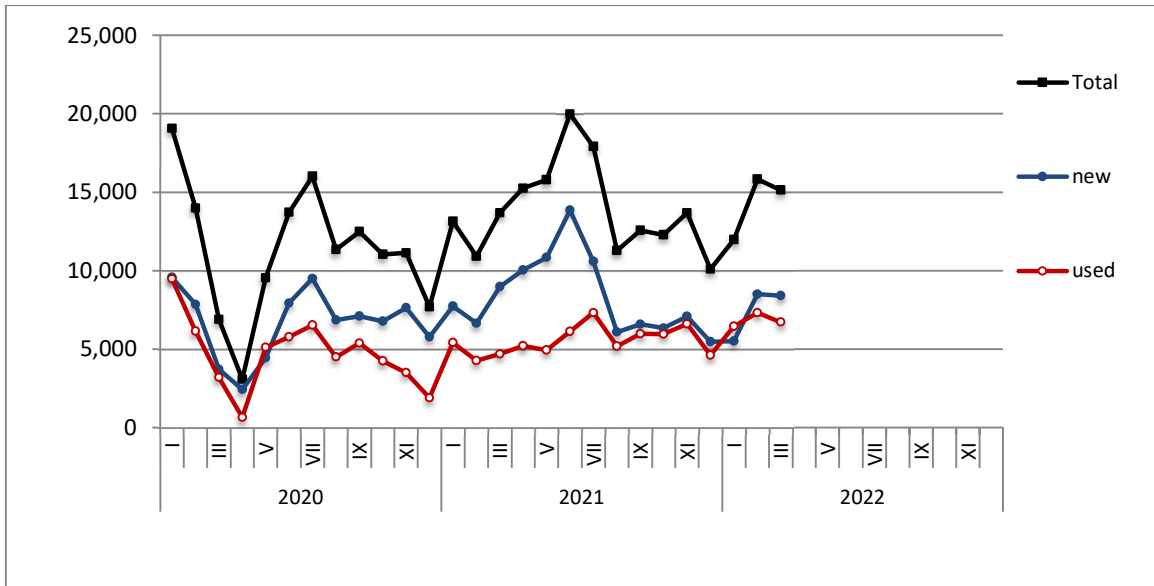
Table 1. Road motor vehicles, both new and used, put into circulation for the first time in Greece: March 2020 - 2022

Category of Road Motor Vehicles	March									Change (%)					
	2020			2021			2022			2021/2020			2022/2021		
	Total	New	Used	Total	New	Used	Total	New	Used	Total	New	Used	Total	New	Used
Greece, total															
Road Motor Vehicles,total	10,166	5,663	4,503	20,175	13,189	6,986	21,717	12,979	8,738	98.5%	132.9%	55.1%	7.6%	-1.6%	25.1%
1. Road motor cars	8,470	4,115	4,355	16,731	10,017	6,714	17,661	9,255	8,406	97.5%	143.4%	54.2%	5.6%	-7.6%	25.2%
Passenger Cars	6,902	3,703	3,199	13,674	8,983	4,691	15,137	8,413	6,724	98.1%	142.6%	46.6%	10.7%	-6.3%	43.3%
Buses	90	19	71	106	19	87	109	22	87	17.8%	0.0%	22.5%	2.8%	15.8%	0.0%
Lorries	1,478	393	1,085	2,951	1,015	1,936	2,415	820	1,595	99.7%	158.3%	78.4%	-18.2%	-19.2%	-17.6%
2. Motorcycles > 50 cc	1,696	1,548	148	3,444	3,172	272	4,056	3,724	332	103.1%	104.9%	83.8%	17.8%	17.4%	22.1%
Prefecture of Attica															
Road Motor Vehicles,total	5,172	3,638	1,534	11,174	8,403	2,771	11,720	8,283	3,437	116.0%	131.0%	80.6%	4.9%	-1.4%	24.0%
1. Road motor cars	4,228	2,737	1,491	9,370	6,662	2,708	9,680	6,326	3,354	121.6%	143.4%	81.6%	3.3%	-5.0%	23.9%
Passenger Cars	3,730	2,524	1,206	8,201	6,057	2,144	8,690	5,807	2,883	119.9%	140.0%	77.8%	6.0%	-4.1%	34.5%
Buses	30	1	29	18	7	11	41	7	34	-40.0%	600.0%	-62.1%	127.8%	0.0%	209.1%
Lorries	468	212	256	1,151	598	553	949	512	437	145.9%	182.1%	116.0%	-17.5%	-14.4%	-21.0%
2. Motorcycles > 50 cc	944	901	43	1,804	1,741	63	2,040	1,957	83	91.1%	93.2%	46.5%	13.1%	12.4%	31.7%

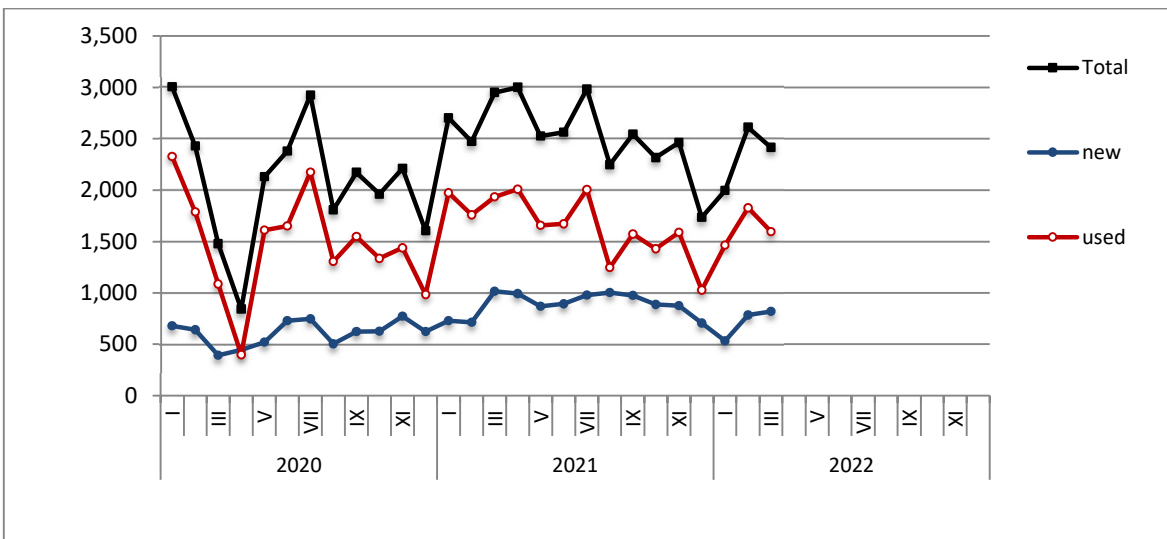
Table 2. Road motor vehicles, both new and used, put into circulation for the first time in Greece: April 2020 – March 2022

Category of Road Motor Vehicles	Average Apr. 2020 - Mar. 2021						Average Apr. 2021 - Mar. 2022			Change (%)		
	Average Apr. 2021 - Mar. 2022 / Average Apr. 2020 - Mar. 2021											
	Total	New	Used	Total	New	Used	Total	New	Used			
Greece, total												
Road Motor Vehicles,total	16,759	10,551	6,208	21,121	13,036	8,085	26.0%	23.6%	30.2%			
1. Road motor cars	13,445	7,510	5,935	16,883	9,175	7,708	25.6%	22.2%	29.9%			
Passenger Cars	11,150	6,819	4,331	14,314	8,279	6,035	28.4%	21.4%	39.3%			
Buses	114	20	94	118	36	82	3.5%	80.0%	-12.8%			
Lorries	2,181	671	1,510	2,451	860	1,591	12.4%	28.2%	5.4%			
2. Motorcycles > 50 cc	3,314	3,041	273	4,238	3,861	377	27.9%	27.0%	38.1%			

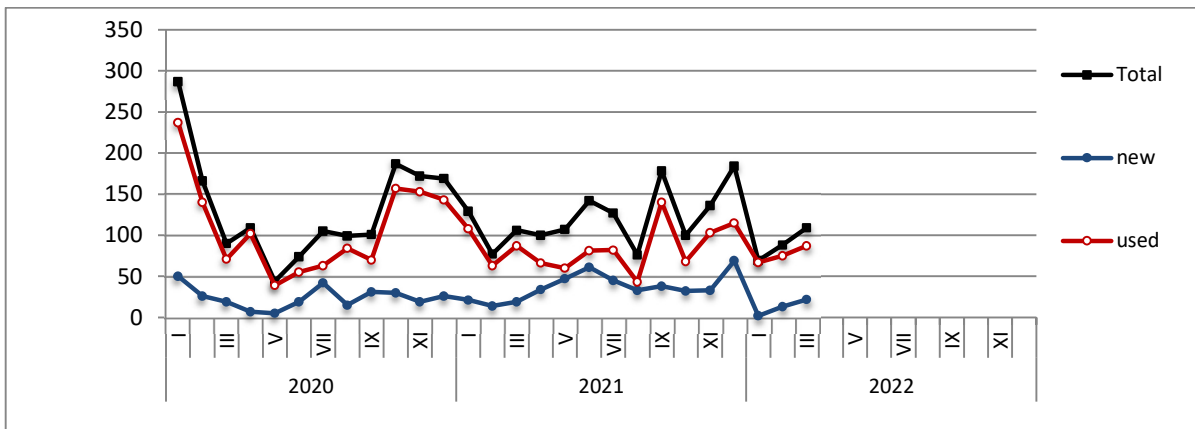
Graph 1: Passenger Cars (January 2020 – March 2022)



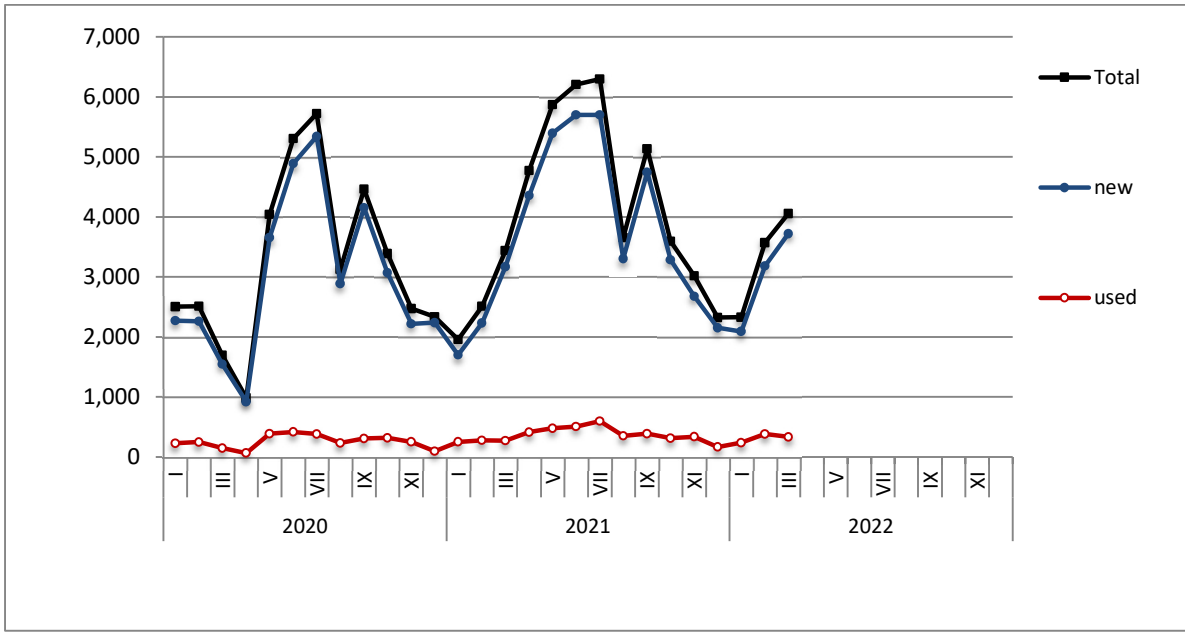
Graph 2: Lorries (January 2020 – March 2022)



Graph 3: Buses (January 2020 – March 2022)



Graph 4: Motorcycles (January 2020 – March 2022)



Graph 5: New Registrations of Motor Vehicles (March 2022)

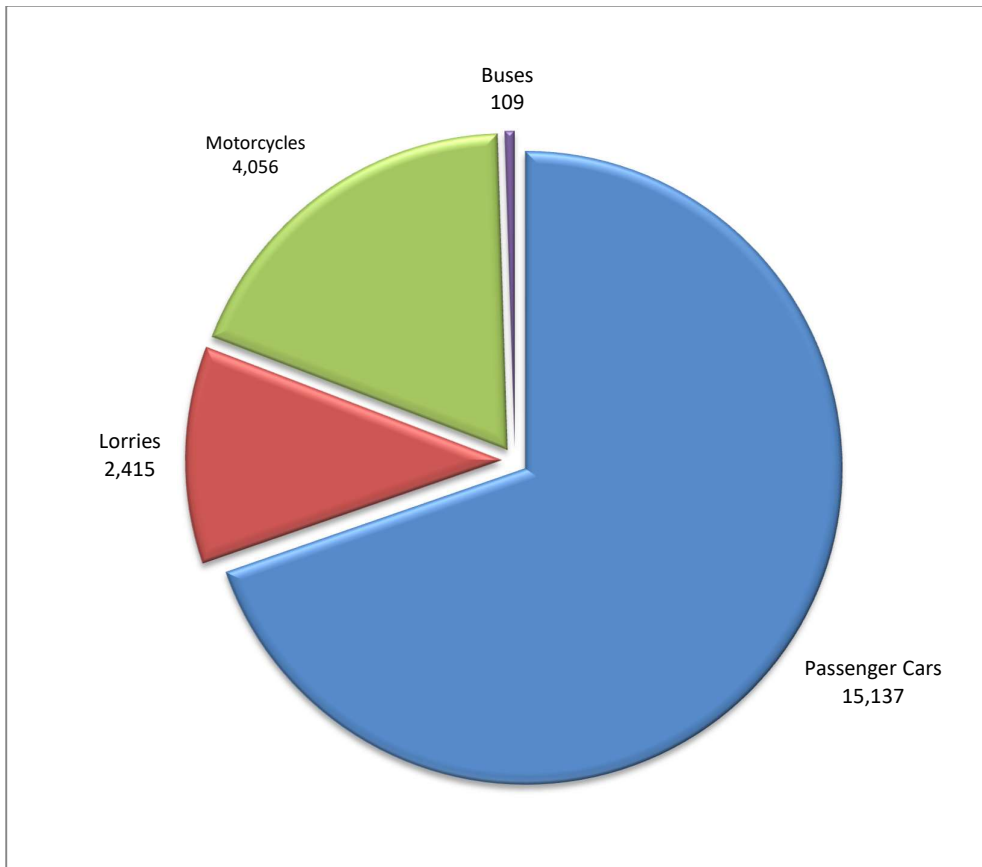
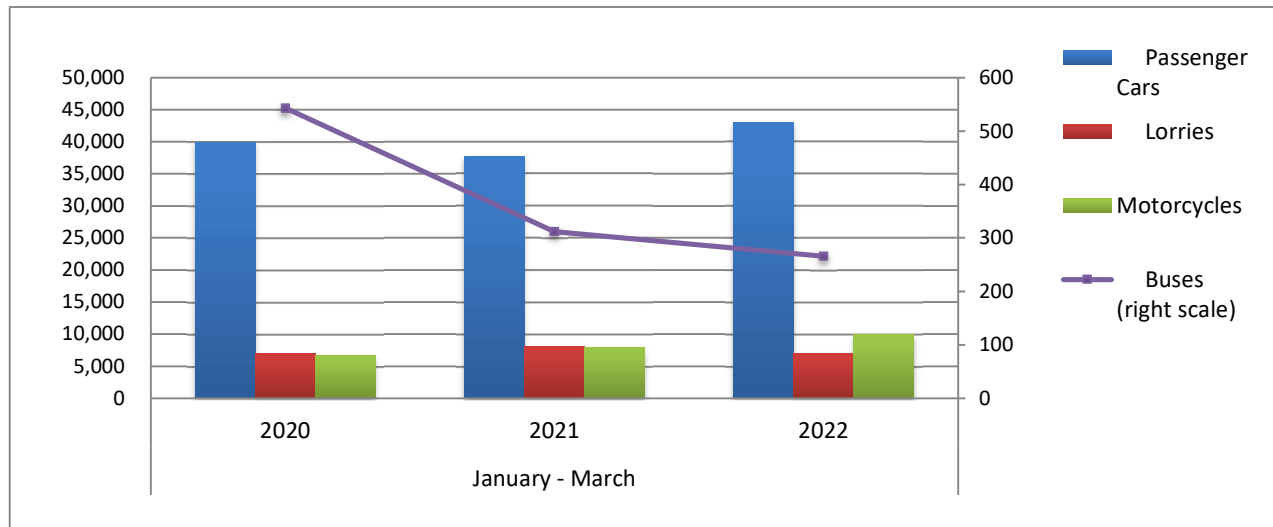


Table 3. Road motor vehicles, both new and used, put into circulation for the first time in Greece: January - March, years 2020 till 2022															
Category of Road Motor Vehicles	January - March									Change (%)					
	2020			2021			2022			2021/2020			2022/2021		
	Total	New	Used	Total	New	Used	Total	New	Used	Total	New	Used	Total	New	Used
Greece, total															
Road Motor Vehicles,total	54,130	29,024	25,106	54,093	32,983	21,110	60,184	33,613	26,571	-0.1%	13.6%	-15.9%	11.3%	1.9%	25.9%
1. Road motor cars	47,414	22,938	24,476	46,178	25,874	20,304	50,226	24,612	25,614	-2.6%	12.8%	-17.0%	8.8%	-4.9%	26.2%
Passenger Cars	39,957	21,131	18,826	37,738	23,364	14,374	42,934	22,437	20,497	-5.6%	10.6%	-23.6%	13.8%	-4.0%	42.6%
Buses	543	95	448	312	54	258	266	37	229	-42.5%	-43.2%	-42.4%	-14.7%	-31.5%	-11.2%
Lorries	6,914	1,712	5,202	8,128	2,456	5,672	7,026	2,138	4,888	17.6%	43.5%	9.0%	-13.6%	-12.9%	-13.8%
2. Motorcycles > 50 cc	6,716	6,086	630	7,915	7,109	806	9,958	9,001	957	17.9%	16.8%	27.9%	25.8%	26.6%	18.7%
Prefecture of Attica															
Road Motor Vehicles,total	25,926	18,193	7,733	28,989	21,161	7,828	31,651	21,371	10,280	11.8%	16.3%	1.2%	9.2%	1.0%	31.3%
1. Road motor cars	22,187	14,634	7,553	24,552	16,951	7,601	26,438	16,494	9,944	10.7%	15.8%	0.6%	7.7%	-2.7%	30.8%
Passenger Cars	19,977	13,709	6,268	21,546	15,542	6,004	23,664	15,170	8,494	7.9%	13.4%	-4.2%	9.8%	-2.4%	41.5%
Buses	199	48	151	74	27	47	104	15	89	-62.8%	-43.8%	-68.9%	40.5%	-44.4%	89.4%
Lorries	2,011	877	1,134	2,932	1,382	1,550	2,670	1,309	1,361	45.8%	57.6%	36.7%	-8.9%	-5.3%	-12.2%
2. Motorcycles > 50 cc	3,739	3,559	180	4,437	4,210	227	5,213	4,877	336	18.7%	18.3%	26.1%	17.5%	15.8%	48.0%

Graph 6. New Motor Vehicles Circulation Licenses: January–March, years 2020 till 2022



Graph 7. New Registrations of Motor Vehicles: January –March 2022

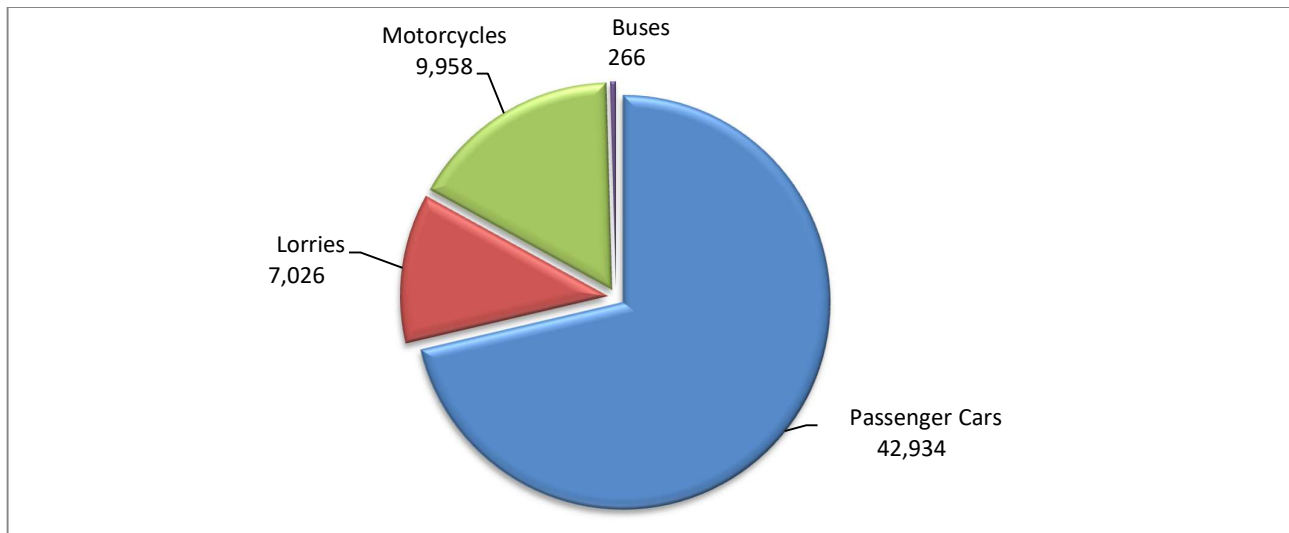


Table 4
Sales of new and used passenger cars by make: March 2022 and January - March 2022

Make	Passenger cars			
	March		January - March	
	new	used	new	used
ALFA ROMEO	7	61	22	199
ASTON MARTIN	-	-	-	1
AUDI	284	102	747	364
BENTLEY	1	-	2	1
BMW	281	147	934	503
BURSTNE	-	1	-	1
CADILLAC	-	-	-	2
CAPRON	2	1	2	2
CARTHAGO	-	-	1	-
CHEVROLET	-	36	-	139
CHRYSLER	-	-	-	4
CITROEN	69	199	245	669
CITROEN / DS	200	11	667	28
CUPRA	29	-	89	1
DACIA	141	151	685	491
DAIHATSU	-	2	-	7
DETHLEFFS	-	-	-	1
DS	113	1	162	2
ETRUSCO	-	-	1	-
FERRARI	-	-	-	5
FIAT	354	374	693	1,079
FORD	387	418	899	1,297
HOBBY WOHNWAGEN	-	-	-	1
HONDA	26	57	59	176
HYUNDAI	824	698	2,159	2,094
JAGUAR	7	8	11	25
JEEP	177	34	724	89
KERABOSS	1	-	1	-
KIA	443	162	1,003	440
KNAUS	-	1	-	4
LADA	-	-	-	1
LAMBORGHINI	1	1	2	5
LANCIA	-	6	-	22
LAND ROVER	29	56	103	152
LES DAUPHINS	-	-	-	1
LEVC	2	-	2	-
LEXUS	18	5	43	14
LMC	-	-	-	1
MASERATI	4	2	6	3
MAZDA	47	25	114	80
MERCEDES	482	317	873	901
MERCEDES ¹	-	-	3	-
MINI	178	29	499	110
MINI MAFER	-	1	-	1
MITSUBISHI	134	77	191	231
MOBILVETTA DESI	-	1	-	1
NISSAN	163	496	548	1,549
NISSAN ¹	9	-	15	-

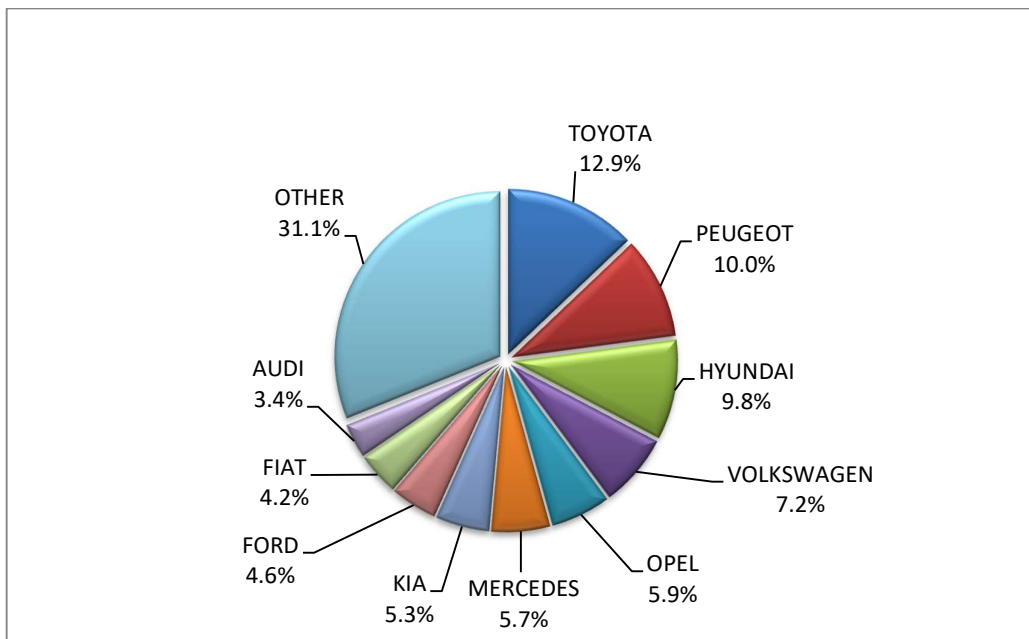
Table 4 (cont)
Sales of new and used passenger cars by make: March 2022 and January - March 2022

Make	Passenger cars			
	March		January - March	
	new	used	new	used
OPEL	494	506	1,667	1,439
PEUGEOT	841	392	1,688	1,127
PEUGEOT ²	-	-	23	-
PORSCHE	17	37	44	106
QUATTRO	-	-	-	1
RANGE ROVER	-	1	-	5
RENAULT	174	717	610	2,112
SAAB	-	1	-	3
SEAT	71	68	168	227
SKODA	180	172	609	454
SMART	4	210	17	648
SSANGYONG	-	1	-	3
SUBARU	15	6	24	17
SUN LIVING	-	-	-	1
SUZUKI	278	153	752	492
TESLA	105	1	105	8
TOYOTA	1,085	611	3,404	2,038
TRIGANO	-	1	-	2
VOLKSWAGEN	602	349	1,446	1,059
VOLVO	134	17	375	55
WEINSBERG	-	1	-	3
TOTAL	8,413	6,724	22,437	20,497

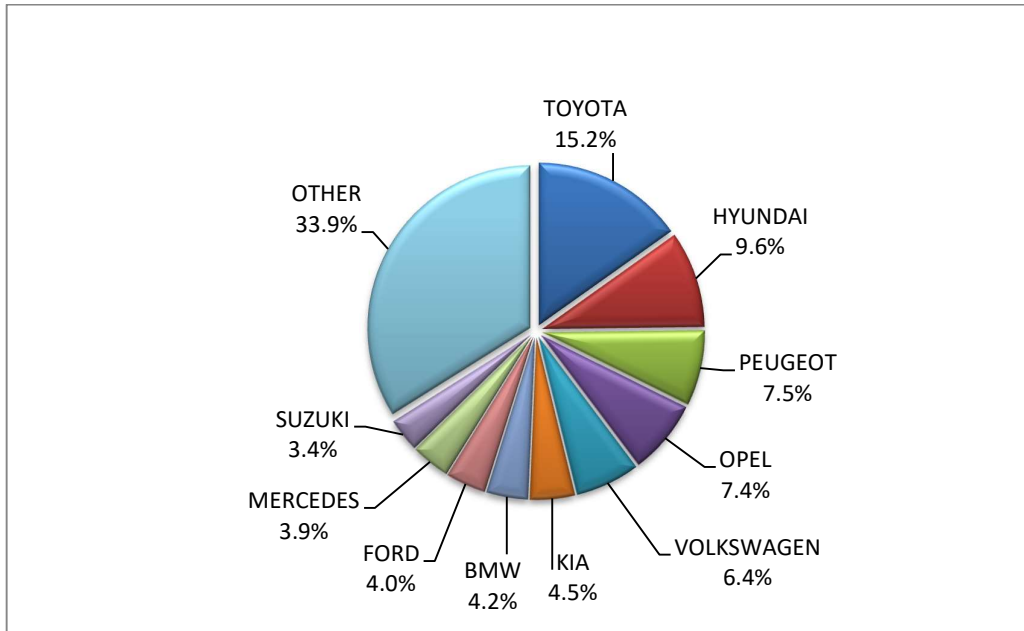
1 : With 2nd/3rd stage manufacturer in Greece.

2 : With 2nd/3rd stage manufacturer abroad.

Graph 8. Sales of new passenger cars by make (March 2022)



Graph 9. Sales of new passenger cars by make (January – March 2022)



**Table 5
Sales of new and used lorries by make: March 2022 and January - March 2022**

Make	Lorries			
	March		January - March	
	new	used	new	used
AIXAM	-	1	-	1
ASIA MOTOR	-	-	-	1
CHRYSLER	-	1	-	1
CITROEN	57	48	138	148
DACIA	-	5	-	18
DAF	-	56	-	158
DAF ¹	6	-	16	1
DAIHATSU	-	-	-	2
DODGE	-	-	-	3
FCA US LLC	-	-	-	1
FIAT	170	133	342	425
FIAT-IVECO	-	2	-	7
FORD	71	207	214	593
FORD ¹	5	1	15	1
HYUNDAI	-	3	-	6
ISUZU	21	22	37	49
ISUZU ¹	1	-	2	-
IVECO	1	28	3	79
IVECO ¹	3	-	4	-
IVECO ²	-	1	-	1
IVECO MAGIRUS	-	2	-	10

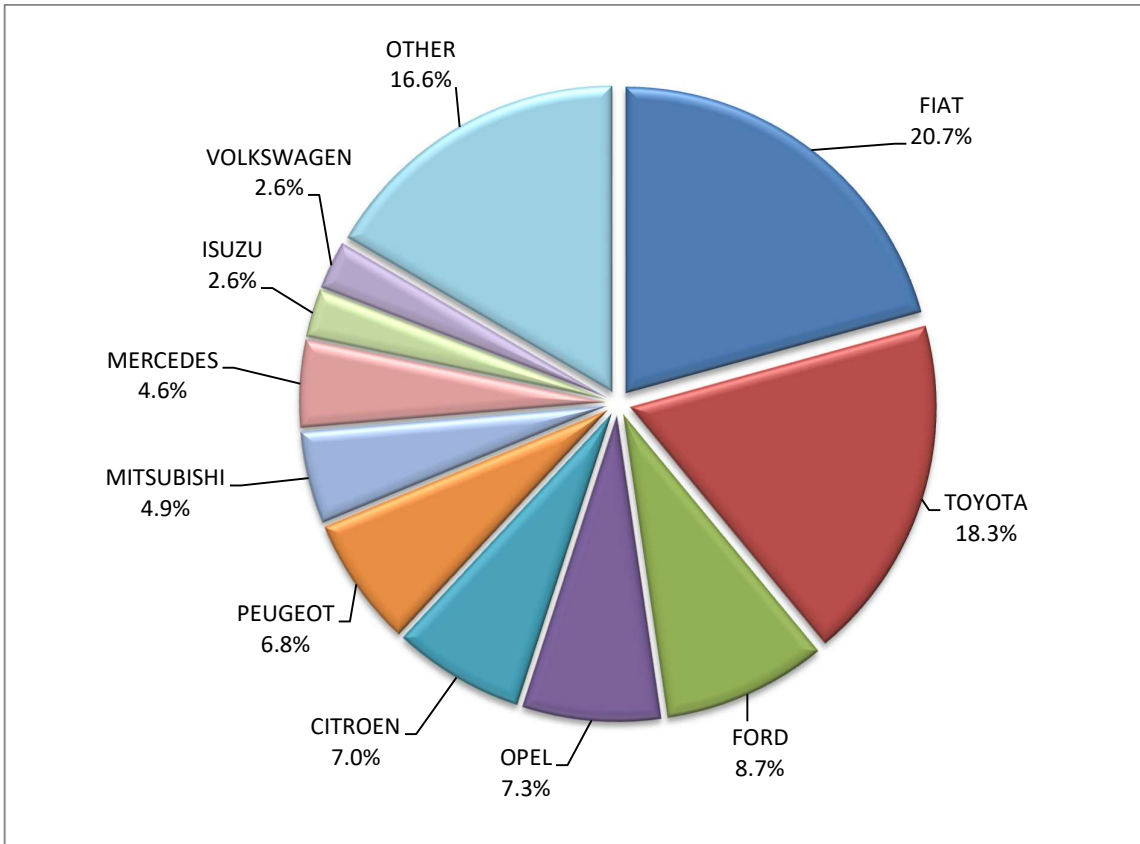
Table 5(cont)
Sales of new and used lorries by make: March 2022 and January - March 2022

Make	Lorries			
	March		January - March	
	new	used	new	used
JEEP	15	2	55	4
KIA	-	1	-	3
KIEFER	-	-	-	1
LAND ROVER	-	1	2	4
LEVC	2	-	4	-
MAN	1	93	1	286
MAN ¹	5	-	6	1
MAXUS , LDV	1	-	6	-
MAZDA	-	1	-	8
MERCEDES	38	399	71	1,141
MERCEDES ¹	12	1	51	3
MERCEDES ²	-	1	1	1
MITSUBISHI	40	33	127	112
MITSUBISHI ¹	16	-	37	-
NISSAN	17	51	25	162
OPEL	60	68	199	206
OVRIGA	-	-	-	1
PEUGEOT	56	75	143	203
PFAU	-	-	-	2
PIAGGIO	3	1	4	5
PIAGGIO ¹	1	-	5	-
POLARIS	-	-	1	-
RENAULT	13	110	34	366
SCANIA	4	62	8	235
SCANIA ¹	-	-	1	1
SEAT	-	1	-	1
SKODA	-	4	-	10
SSANGYONG	-	-	-	2
SUZUKI	19	-	60	-
TERBERG	-	-	-	1
TOYOTA	150	39	435	112
VOLKSWAGEN	21	51	62	188
VOLVO	5	91	20	323
VOLVO ¹	6	-	8	1
VOLVO ²	-	-	1	-
TOTAL	820	1,595	2,138	4,888

1 : With 2nd/3rd stage manufacturer in Greece.

2 : With 2nd/3rd stage manufacturer abroad.

Graph 10. Sales of new lorries by make (March 2022)



Graph 11. Sales of new lorries by make (January –March 2022)

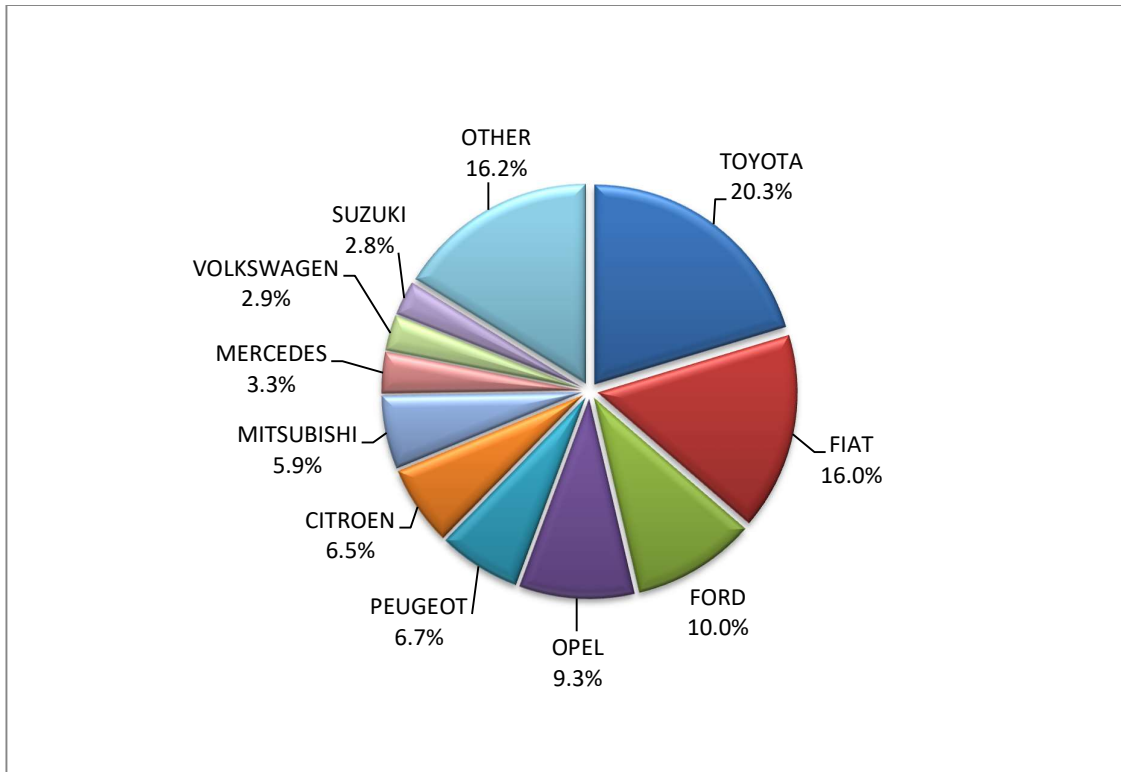


Table 6
Sales of new and used buses by make: March 2022 and January - March 2022

Make	Buses			
	March		January - March	
	new	used	new	used
BOVA	-	3	-	13
EVOBUS	-	2	-	5
FIAT	-	1	-	1
FORD	6	3	8	6
GULERYUZ	-	-	-	1
HEULIEZ BUS	-	-	-	1
ISUZU, AOS, GLOBUS	1	-	1	-
IVECO	-	1	-	3
MAN	-	8	-	18
MAN/NEOPLAN	-	1	-	1
MERCEDES	-	47	-	141
MERCEDES ¹	11	1	22	1
MERCEDES ²	4	-	6	-
MERCUS	-	1	-	1
NEOPLAN	-	2	-	4
OTOKAR	-	2	-	3
SETRA	-	12	-	23
TEMSA	-	-	-	2
UNVI	-	2	-	2
VAN HOOL	-	1	-	1
VOLVO	-	-	-	1
XIAMEN KING LONG	-	-	-	1
TOTAL	22	87	37	229

1 : With 2nd/3rd stage manufacturer in Greece.

2 : With 2nd/3rd stage manufacturer abroad.

Graph 12. Sales of new buses by make (January –March 2022)

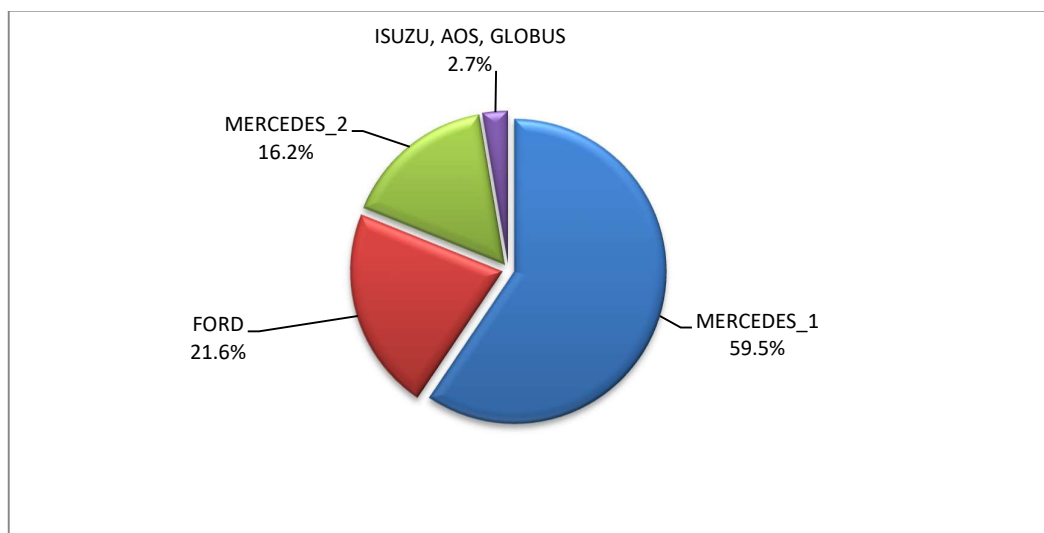


Table 7

Sales of new and used motorcycles by make or manufacturer: March 2022 and January - March 2022

Make	Motorcycles			
	March		January - March	
	new	used	new	used
AIDEA	-	-	1	-
APRILIA	28	3	49	7
ASKOLL	-	-	-	1
BAJAJ	5	-	8	1
BASHAN	1	-	1	-
BASHAN, AMGroup, AMGroup Bike, DON, RBIS, WORKER BEAR, Nomik ATV 2, APACHI, ISILDAR	2	-	7	-
BENELLI	18	2	39	3
BETA	14	3	36	6
BMW	80	20	197	68
BOMBARDIER RECREATIONAL PRODUCTS ING (BRP)	2	-	2	-
BRIXTON	8	-	27	-
BUELL	-	2	-	2
CFMOTO	95	1	183	2
CHONGQING LIFAN	-	1	-	1
DAYANG, DAYTONA MOTORS, NIPPONIA, DOCKER, WAYEL, SUMCO, VEEROAD, CETUR, RUTEC	9	-	20	-
DAYANG, DAYTONA MOTORS, NIPPONIA, KUBA, VEEROAD, SUMCO, CETUR, RUTEC	72	-	191	1
DAYANG, DAYTONA MOTORS, NIPPONIA, VEEROAD	216	1	542	3
DAYANG, DAYTONA MOTORS, NIPPONIA, VEEROAD, DOCKER	78	-	190	-
DAYANG, ECOCREMO, ECOOTER, ECOOTOR,AGM, ORCAL, SUMCO	1	-	2	-
DAYANG, NIPPONIA, DAYTONA MOTORS, VEEROAD, SUMCO, DOCKER, MH MOTORCYCLES	7	-	11	-
DAYTONA	6	-	21	-
DUCATI	16	1	36	16
EFUN, ZAP	5	-	16	-
EMBUGGY, VINTAGE, EVANGEL	1	-	2	-
FANTIC MOTOR	-	-	4	-
FD MOTORS, FASPIDER, Daytona Motors, EVO Motors, Veeroad	6	-	11	-
FD MOTORS, FASPIDER, DAYTONA MOTORS, NIPPONIA, QUANTYA	2	-	2	-
FULU, LICHI	1	-	1	-
GASGAS	3	-	9	1
GENERIC,EXPLORER,MALANCA,KSR Moto Austria, Motron Motorrad	3	-	13	-
GILERA, PIAGGIO	-	2	-	2
GOLDEN LION, SAKURA, ARTISAN, ETALIAN, E-mio, Fauro, Kito, Varaneo, Viverra	1	-	1	-
GPX	1	-	1	-
HARLEY DAVIDSON	1	9	1	19
HONDA	907	72	2,233	203
HORWIN	-	-	2	-
HSUN, HISUN, APACHI, Mx, MASAI, HYTRACK, TRAPPER, PUMAREX, GEON, ASYAMOTOR, DAYTONA MOTORS, KRAL	1	-	2	-
HUSQVARNA	15	1	33	8
IANYING, TYM, XINBEN, TEYIN, RIYA,ONGYUNDA, SANBEN, ALFA, Senzo, La Souris, TCB, KENTOYA	1	-	3	-
INDIAN MOTORCYCLE	-	-	2	2
JCADI, TILGREEN, Grupo Invicta MOTOR, e-broh, FAURO	-	-	1	-
JIAN SHE	-	-	-	1
JIAYUAN	3	-	7	1
JINYI, JINYI MOTOR, DAYI MOTOR, AMGroup, AMGroup Bike, Twister Wheel, GREENWOLKE	1	-	1	-
KAWASAKI	4	7	9	21

Table 7 (cont)

Sales of new and used motorcycles by make or manufacturer: March 2022 and January - March 2022

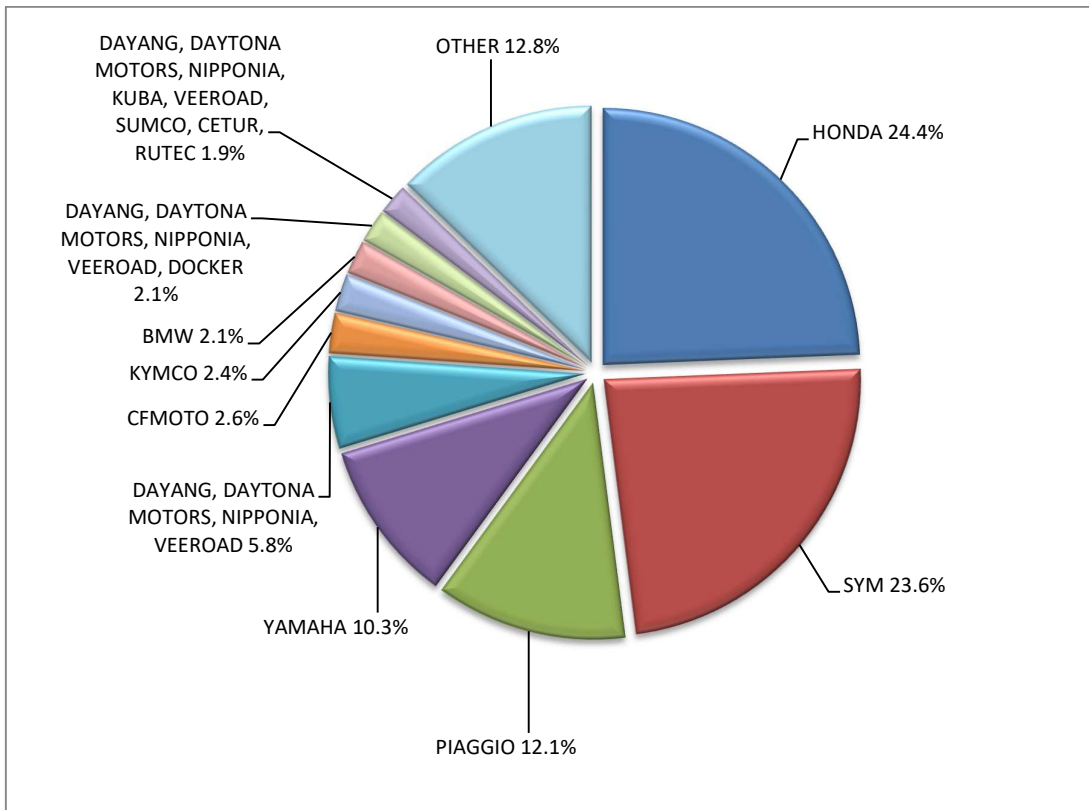
Make	Motorcycles			
	March		January - March	
	new	used	new	used
KTM	37	7	106	34
KWANG YANG	-	1	-	3
KYMCO	89	47	226	128
LAMBRETTA	3	-	8	-
LIFAN, HONLEI, QIPAI, SKYGO, GTS, PINK, Daytona MOTORS	-	-	1	-
Lingzhida, LINZDA, LINDN, LINYI, LONGMAO, NLIGHT	1	-	1	-
LINHAI	1	-	1	1
LINHAI, SINNIS	1	-	1	-
LONCIN, KUBA, RKS, ITALIKA, VOGÉ, SUNRACE, SKY, MALAGUTI, ROCKET, SUPERBIKE, NOVELBAT, TRIDIAMOND	17	-	37	-
LONCIN, VOGÉ, KUBA, RKS, ITALIKA, SUNRACE, SKY, MALAGUTI, SUPERBIKE, ROCKET, NOVELBAT, TIGREMOTO, GREEN	7	-	12	-
LONCIN,VOGE,KUBA,RKS,ITALIKA,SUNRACE,SKY,MALAGUTI,SUPERBIKE	-	-	2	-
LONGJIA, ORCAL, NECO	7	-	23	-
LONGJIA, ORCAL, NECO, VGA, Gemini	-	-	5	-
LVNENG	1	-	1	-
MACBOR,RVM,COLOVE,ORCAL,DAYTONA MOTORS,ZF-KY,Lexmoto,OVER BIKES,YUKI, AJS	7	-	32	-
MALAGUTI	32	-	32	-
MELEX	-	-	1	-
MGK HM	1	-	13	-
MOTO GUZZI	4	-	15	-
MOTO MORINI	4	-	4	-
MOTRON MOTORRAD, ZONGSHEN	1	-	2	-
MV AGUSTA	-	-	4	1
NEV, N, FLYBO, JM, MALON, Herox, Baoya, ZILENT	-	-	-	1
NIU, NUUV	4	1	12	1
PEUGEOT	-	2	2	7
PIAGGIO	449	40	1,012	107
POLARIS	6	1	8	1
QJ	-	-	-	2
QJ, QJIANG, KEEWAY, LEONE, RKS, BENELLI, EMPIRE KEEWAY, KUBA	5	-	14	-
RAY ELECTRIC MOTORS	-	-	1	-
RENLI	4	-	5	-
ROYAL ENFIELD	11	-	29	-
Royalloy, Royal Alloy, RA	-	-	3	-
Royalloy,Royal Alloy,RA,SCOMADI,VALENTINO,VALENTINO MOTORI	-	-	1	-
RVM, MACBOR, COLOVE, ORCAL, DAYTONA MOTORS	-	-	1	-
SAKURA, GOLDEN LION, ARTISAN, Fayro,ETALIAN, Viverra,Kito, E-mia,velca,E.F.O., E-KUMA,BOLIDE, LINZE	2	-	4	-
SAN YANG	-	1	-	2
SEGWAY	3	-	4	-
SHANYANG, ATLAS PANTHER, YAMAZUKI MOTO, MOTORKING, Hirlee, XB	3	-	10	-
SHARE'NGO ,ZHIDOU,ZD	-	-	1	-
SHENGWO NEW ENERGY, YUKI	3	-	14	-
SHERCO	-	-	3	2
SILENCE, SCUTUM, ETRIX	1	-	3	-
SILENCE,SCUTUM,ETRIX	1	-	5	-
SI-ZWEIRAD	-	-	-	1
SKYTEAM, SACIN, CSR, METALCO, SOKUDO, BAZUKA, MINICO, MOTOSBASI, MOTOS BORDOY, SUMKO, ROXON, MONKEY BIKES	6	-	9	2
SUZUKI	43	14	97	43

Table 7 (cont)

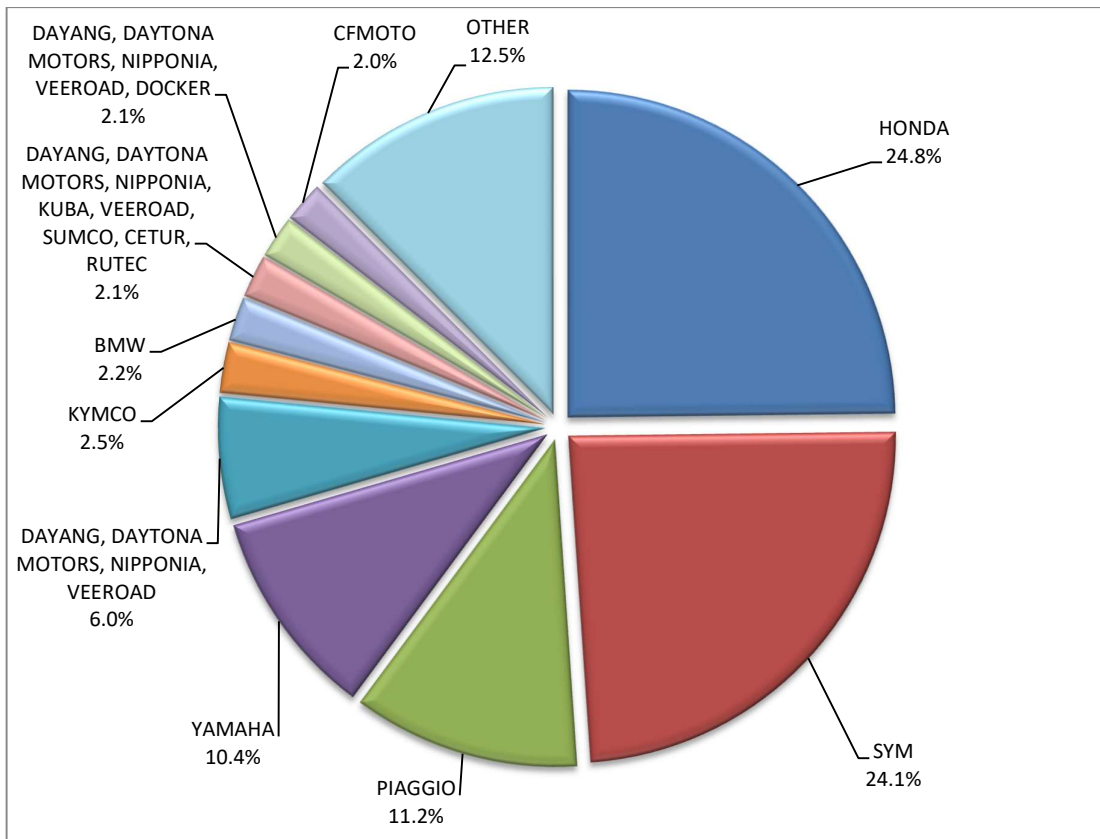
Sales of new and used motorcycles by make or manufacturer: March 2022 and January - March 2022

Make	Motorcycles			
	March		January - March	
	new	used	new	used
SWM	-	-	1	-
SYM	880	17	2,170	39
TARO, JUNAK, BARTON MOTORS ,ORCAL, Lexmoto	10	-	23	-
TARO, JUNAK, BARTON MOTORS, ORCAL, Lexmoto, MITT, NECO, WOTTAN, MAGPOWER, ADAMOTO, MAXON, MAX-ON, TRMOTOR, CHUANL	8	-	11	-
TAYO, HAOJIANG, ZHONGYU, THUMP, THUMPSTAR, KIDEN, ZONTES, Junak, SENKE, TANNY, TYAN, ROMET, ROMET MOTORS	21	-	77	2
TGB	-	1	-	1
TRIUMPH	27	3	57	8
VMOTO-SOCO, E-MAX, VMOTO, SUPER SOCO	5	-	8	-
VOLTA, VTA, REVOLT	1	-	4	-
WONJAN, SAMADA	-	-	1	-
WONJAN,THRUST MOTOR, WMOTO, KEEWAY, TD	-	1	-	1
XGJAO	-	1	-	1
XGJAO, ZIPP, TOROS, ROMET, ROMET MOTORS, ROUTER, VEEROAD, DAYTONA MOTORS, GEMINI, MH MOTORCYCLES, MTG MOTORS	3	-	3	-
XINRI, SUNRA ,APACHI, ISILDAR, ISILDAR APACHI, Wayscral, KRAL	6	-	9	-
YAMAHA	382	69	932	199
YAMAHA, MBK	-	1	-	1
YASAN MOTOR, Kito	-	-	1	-
YINGANG, BENYI, ROMET MOTORS, YUKI, ROUTER, MOTORAN, DAYTONA MOTORS, M1NSK, HAMACHI, KUBA, MONDIAL	-	-	2	-
ZERO MOTORCYCLES	-	-	2	-
ZHONGNENG, ZNEN, AGM, BTC, CLS, COLIBRI, DAYTONA MOTORS, DERRACE, DOCKER, JM MOTORS, KUBA, La souris, LEXMOTO	8	-	9	-
ZONGSHEN, ZIP STAR, Lexmoto, ICONE, VORTEX, M1NSK, MACBOR, MONDIAL, ROMET MOTORS ,SINNIS, SPARKSTER, OVER BIKES	3	-	6	-
ZONGSHEN, ZIPSTAR, ICONE, JUNAK, Lexmoto, MH Motorcycles, MINSK, MONDIAL, ROMET MOTORS, SINNIS, SPARKSTER	-	-	1	-
ZONGSHEN, ZIPSTAR, ZEALSUN, KENTO	2	-	2	-
TOTAL	3,724	332	9,001	957

Graph 13. Sales of new motorcycles (March 2022)



Graph 14. Sales of new motorcycles (January – March 2022)



EXPLANATORY NOTES

Survey on the issuing of new road motor vehicle circulation licenses	The survey on the issuing of new motor vehicle circulation licenses is a census survey. The released data give information, at country level, on the brand and type of the motor vehicle, as well as whether it is new or used. The survey does not include vehicles that move on rails, trolley busses, agricultural tractors and machinery. In addition, the following are excluded: all motor vehicles of the Armed Forces, Police, Fire Brigade, State Services, Diplomatic Corps, Foreign Missions, and Invalids of Wars, as well as motorcycles with a cylinder capacity less than 50 cc.
Legal basis	Law 3832/2010
ReferencePeriod	March 2022
Coverage	The production of monthly data is based on the registers held by the Ministry of Infrastructure, Transport and Networks, which records all the monthly changes observed in the vehicle registration licenses at country level.
Definitions	<p>Road motor vehicle is any vehicle that, irrespective of the number of wheels, is moved by an engine and is designed to transport persons or cargo or both of them, either they are on the same single vehicle or on a trailer carried by the main motor vehicle.</p> <p>New road motor vehicle is any motor vehicle that is registered for the first time in Greece during the reference month and has not been put into circulation in any other country.</p> <p>Used motor vehicle is any motor vehicle that is registered for the first time in Greece and has been imported as a used one from abroad</p> <p>Passenger motor vehicle: it is a motor vehicle designed to carry mostly people, having no more than 9 seats, including the driver's seat.</p> <p>Bus: it is a motor vehicle, which is designed to carry mostly people, having more than 10 seats, including the driver's seat. In the corresponding tables of this Press Release, this category also includes articulated buses.</p> <p>Lorry: it is motor vehicle designed to carry mostly cargo. In the corresponding tables of this Press Release, this category also includes tractors, tow trucks, articulated tractors, and trucks with trailers.</p> <p>Motorcycle: any two-wheeled motor vehicle, with or without sidecar, with maximum authorized design speed over 45 km/h, or in case it is powered by a combustion engine, with a cylinder capacity of 50 cc or over. In the corresponding tables of this Press Release, this category also includes the three-wheeled motor vehicles – motor tricycles.</p> <p>Tricycle motor vehicle: it is a motor vehicle with three symmetrical wheels with maximum authorized design speed over 45 km/h, or in case it is powered by a combustion engine, with a cylinder capacity over the 50 cc. This category also includes four-wheel vehicles, except the light four-wheel motorcycles, whose empty vehicle tare (excluding the weight of the fuel or mixture of fuel-oil or the weight of the batteries for electric cars) is up to 400 kg in the case the vehicle is designed for passenger use or up to 550 kg in case the vehicle is designed to carry cargo and whose engine is up to 15KW.</p>
Methodology	Exhaustive Survey. The primary data derive from the Ministry of Infrastructure, Transport and Networks and are based on the issuing of new circulation licenses as they are registered by the Regional Offices for Transport and Communications.
References	More information (graphs, tables) concerning the survey on the issuing of new motor vehicle circulation licenses are available on the webpage of ELSTAT, www.statistics.gr , under the link http://www.statistics.gr/en/statistics/-/publication/SME24/