

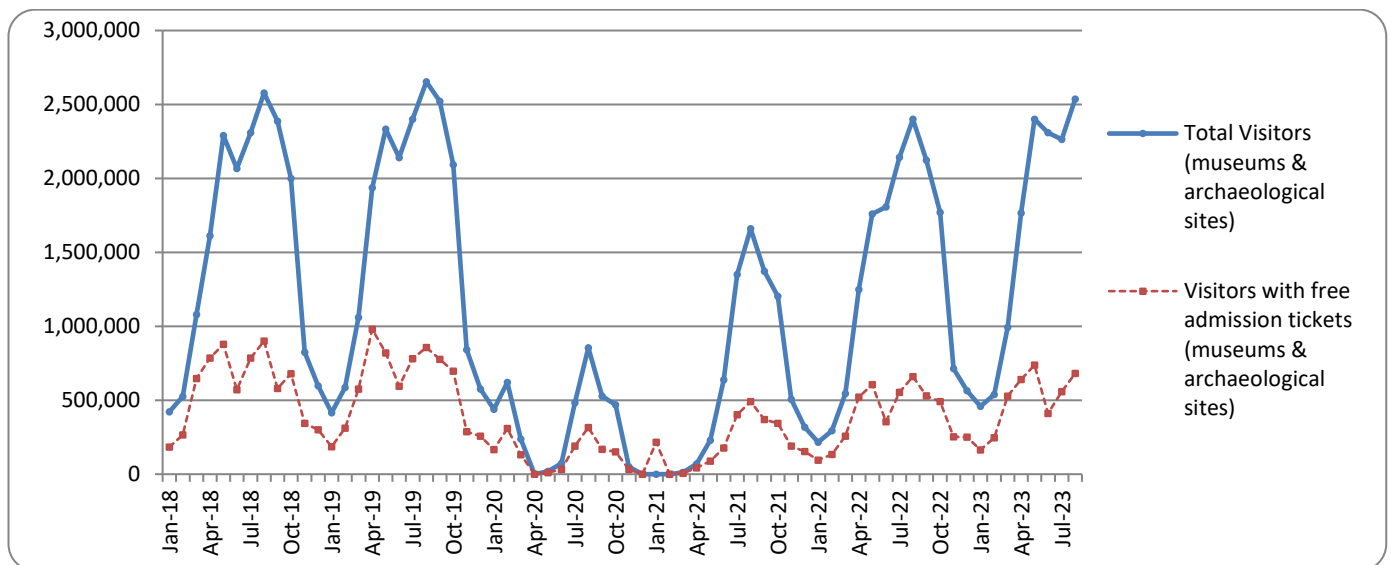


SURVEY ON MUSEUMS AND ARCHAEOLOGICAL SITES ATTENDANCE AUGUST 2023

The Hellenic Statistical Authority (ELSTAT) announces the results of the *Survey on Museums and Archaeological Sites Attendance* for August 2023. More specifically:

- During August 2023 compared with the corresponding month of 2022, museums recorded a 4.0% increase in the number of visitors and a 0.2% increase in the number of free admission visitors, as well as a 25.6% increase in their receipts (Table 1).
- As regards archaeological sites, in August 2023 compared with the corresponding month of 2022, an increase of 6.4% was recorded in the number of visitors, of 4.8% in the number of free admission visitors and of 7.1% in the corresponding receipts (Table 1).
- During the eight-month period from January to August 2023, compared to the corresponding period of 2022, an increase of 30.6% was recorded in the number of visitors of museums, of 30.0% in the number of free admission visitors and of 58.8% in the relevant receipts (Table 2).
- As regards archaeological sites, during the eight-month period from January to August 2023, compared to the corresponding period of 2022, an increase of 26.1% was recorded in the number of visitors, while an increase of 21.9% was observed in the number of free admission visitors and of 28.7% in the relevant receipts (Table 2).

Graph 1: Visitors of Museums and Archaeological sites (January 2018 –August 2023)



Information on methodological issues:

Sectoral Statistics Division
Tourism and Culture Statistics Section
Head of Section: Eleni Papadopoulou
Tel: +30 213 135 2168
e-mail: e.papadopoulou@statistics.gr

Information for data provision:

Tel. +30 213 135 2022, 2308, 2310
e-mail: data.dissem@statistics.gr

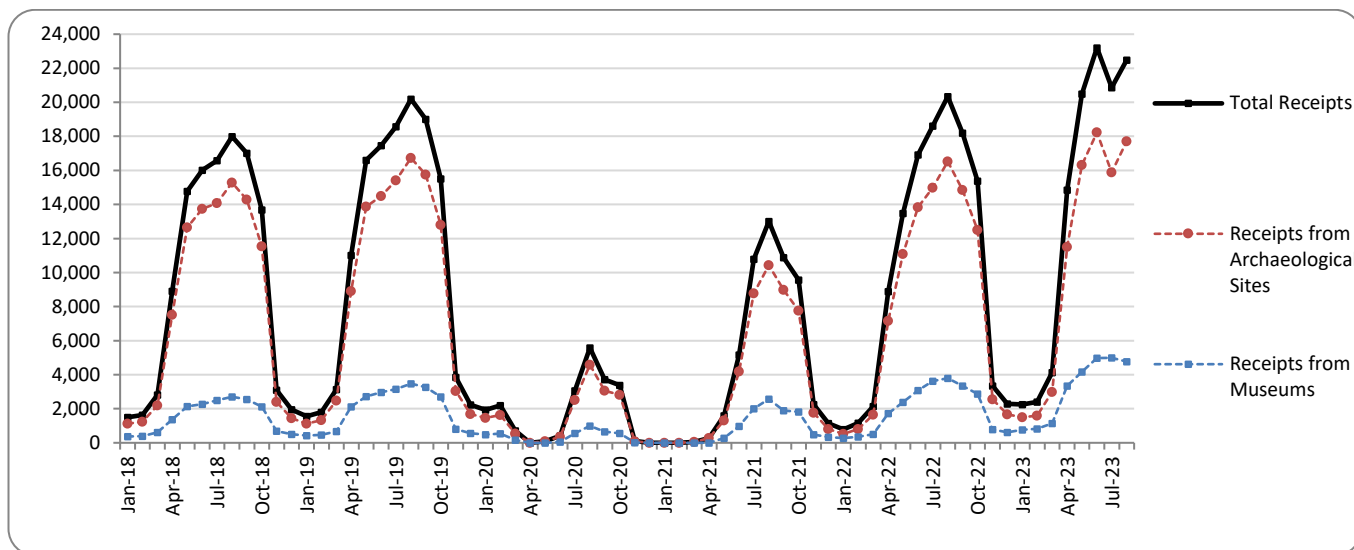
**TABLE 1: VISITORS OF MUSEUMS AND ARCHAEOLOGICAL SITES - TOTAL RECEIPTS
(AUGUST 2022 & AUGUST 2023)**

I. NUMBER OF VISITORS			
Museums and Archaeological sites	2022	2023	Change 2023/2022
Total number of visitors (A+B)	2,400,617	2,537,704	5.7%
A. Museums (C+E)	662,750	688,976	4.0%
Acropolis Museum	193,130	205,235	6.3%
National Archaeological	64,765	73,856	14.0%
Ancient Olympia	9,810	11,242	14.6%
Palace of the Grand Master (Rhodes)	51,521	53,549	3.9%
Herakleion Archaeological (Crete)	47,257	48,474	2.6%
White Tower	30,550	38,958	27.5%
Delphi	16,674	17,032	2.1%
Other museums	249,043	240,630	-3.4%
B. Archaeological Sites (D+F)	1,737,867	1,848,728	6.4%
Epidavros ⁽¹⁾	57,460	64,008	11.4%
The Acropolis of Mycenae & Atreus' Treasure	49,502	57,243	15.6%
The Acropolis of Athens	426,154	491,014	15.2%
Sounio	36,262	42,077	16.0%
The Acropolis of Lindos	120,249	108,220	-10.0%
Royal Tombs of Vergina	16,769	15,358	-8.4%
Ancient Olympia	58,133	66,357	14.1%
Knossos (Crete)	166,933	170,958	2.4%
Phaistos (Crete)	12,987	13,591	4.7%
Ancient Korinthos ⁽¹⁾	16,910	19,703	16.5%
Mystras ⁽¹⁾	23,936	22,526	-5.9%
Delphi	47,076	51,231	8.8%
Other archaeological sites	705,496	726,442	3.0%
II. VISITORS WHO PAID TICKET			
	2022	2023	Change 2023/2022
Total number of visitors who paid ticket (C+D)	1,740,419	1,855,827	6.6%
C. Museums	446,453	472,262	5.8%
D. Archaeological sites	1,293,966	1,383,565	6.9%
III. VISITORS WITH FREE ADMISSION TICKETS			
	2022	2023	Change 2023/2022
Total number of visitors with free admission ticket (E+F)	660,198	681,877	3.3%
E. Museums	216,297	216,714	0.2%
F. Archaeological sites	443,901	465,163	4.8%
IV. RECEIPTS (euros)			
	2022	2023	Change 2023/2022
Total Receipts (G+H)	20,331,471	22,476,858	10.6%
G. Museums	3,802,289	4,774,090	25.6%
H. Archaeological sites	16,529,182	17,702,768	7.1%

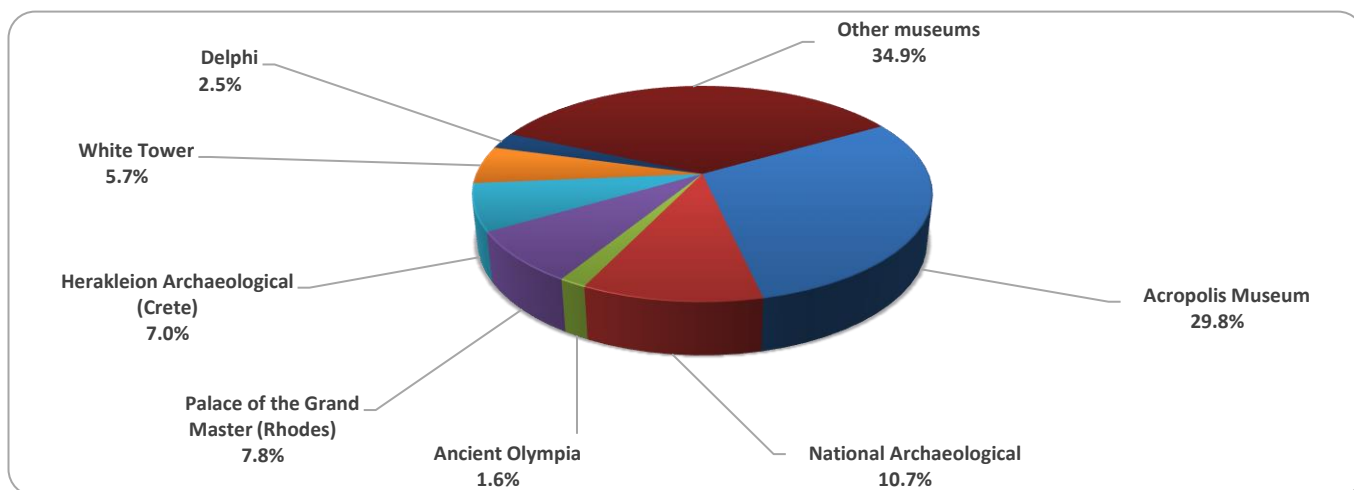
⁽¹⁾ Flat rate ticket, valid both for the museum and the archaeological site.

The following graphs depict the evolution of the receipts of Museums and Archaeological Sites (Graph 2), as well as the number of visitors by Museum (Graph 3) and by Archaeological Site (Graph 4).

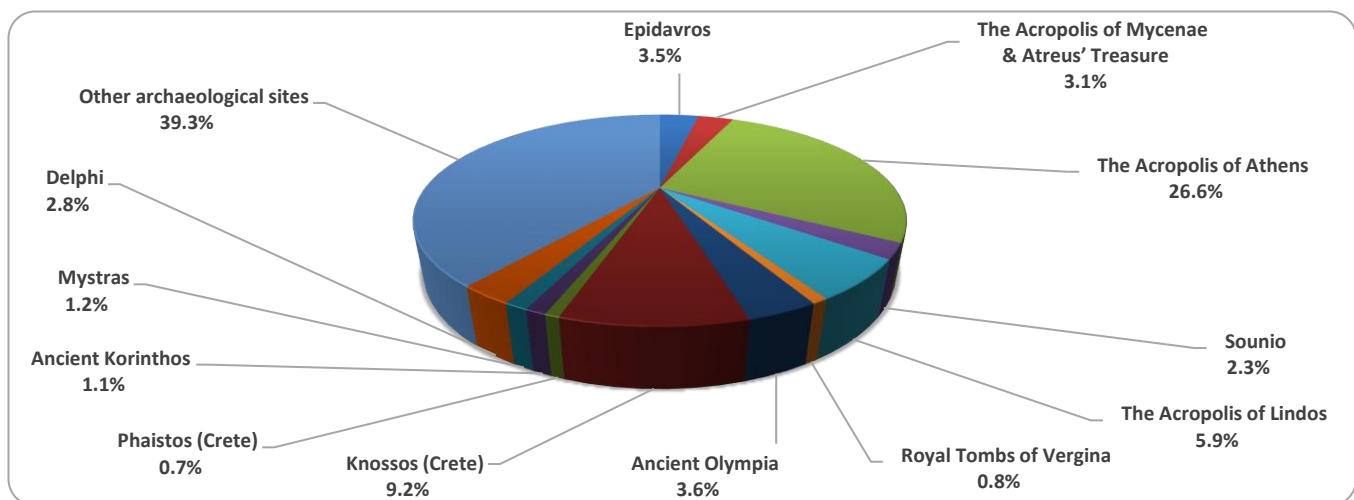
Graph 2: Receipts from Museums and Archaeological Sites (January 2018 – August 2023)
(in thousand euro)



Graph 3: Percentage distribution of visitors by Museum, August 2023



Graph 4: Percentage distribution of visitors by Archaeological site, August 2023



**TABLE 2: VISITORS OF MUSEUMS AND ARCHAEOLOGICAL SITES - TOTAL RECEIPTS
(2021, 2022, JANUARY - AUGUST 2022, 2023)**

I. VISITORS					
Museums and Archaeological sites	2021 ⁽²⁾	2022	JANUARY-AUGUST		change
			2022	2023	2023/2022
Total number of visitors (A+B)	7,357,026	15,583,552	10,413,979	13,268,610	27.4%
A. Museums (C+E)	2,047,481	4,636,901	3,086,514	4,029,941	30.6%
Acropolis Museum	547,908	1,397,353	953,981	1,347,910	41.3%
National Archaeological	189,208	474,821	299,312	442,559	47.9%
Ancient Olympia	34,367	85,179	61,467	60,610	-1.4%
Palace of the Grand Master (Rhodes)	142,530	263,521	178,866	227,828	27.4%
Herakleion Archaeological (Crete)	127,574	249,715	165,194	203,451	23.2%
White Tower	77,983	193,916	123,124	173,608	41.0%
Delphi	58,102	151,512	97,752	146,465	49.8%
Other museums	869,809	1,820,884	1,206,818	1,427,510	18.3%
B. Archaeological Sites (D+F)	5,309,545	10,946,651	7,327,465	9,238,669	26.1%
Epidavros ⁽¹⁾	182,118	393,077	265,962	375,303	41.1%
The Acropolis of Mycenae & Atreus' Treasure	156,227	372,448	249,315	364,912	46.4%
The Acropolis of Athens	1,219,717	3,019,841	1,992,927	2,719,452	36.5%
Sounio	171,348	314,506	212,789	268,314	26.1%
The Acropolis of Lindos	349,418	596,331	411,542	434,292	5.5%
Royal Tombs of Vergina	56,790	168,444	105,297	139,783	32.8%
Ancient Olympia	143,549	338,365	222,137	327,154	47.3%
Knossos (Crete)	445,160	831,320	575,921	666,038	15.6%
Phaistos (Crete)	48,599	74,817	48,022	54,517	13.5%
Ancient Korinthos ⁽¹⁾	59,271	153,616	95,411	134,914	41.4%
Mystras ⁽¹⁾	78,762	139,512	98,463	106,161	7.8%
Delphi	146,061	332,870	214,855	332,409	54.7%
Other archaeological sites	2,252,525	4,211,504	2,834,824	3,315,420	17.0%
II. VISITORS WHO PAID TICKET					
	2021 ⁽²⁾	2022	JANUARY-AUGUST		change
			2022	2023	2023/2022
Total number of visitors who paid ticket (C+D)	5,090,418	10,877,516	7,233,935	9,299,248	28.6%
C. Museums	1,289,896	2,883,216	1,936,076	2,534,556	30.9%
D. Archaeological sites	3,800,522	7,994,300	5,297,859	6,764,692	27.7%
III. VISITORS WITH FREE ADMISSION TICKETS					
	2021 ⁽²⁾	2022	JANUARY-AUGUST		change
			2022	2023	2023/2022
Total number of visitors with free admission ticket (E+F)	2,266,608	4,706,036	3,180,044	3,969,362	24.8%
E. Museums	757,585	1,753,685	1,150,438	1,495,385	30.0%
F. Archaeological sites	1,509,023	2,952,351	2,029,606	2,473,977	21.9%
IV. RECEIPTS (euros)					
	2021 ⁽²⁾	2022	JANUARY-AUGUST		change
			2022	2023	2023/2022
Total Receipts (G+H)	54,735,194	121,535,113	82,334,082	110,697,185	34.4%
G. Museums	10,385,644	23,361,465	15,741,506	24,997,971	58.8%
H. Archaeological sites	44,349,550	98,173,648	66,592,576	85,699,214	28.7%

⁽¹⁾ Flat rate ticket, valid both for the museum and the archaeological site.

⁽²⁾ The operation of museums was suspended gradually from November 1st 2020 until May 13th 2021. The operation of archaeological sites was suspended from November 7th 2020 until March 21st 2021, in the framework of the preventative measures against the Covid-19 pandemic.

EXPLANATORY NOTES

Survey on Museums and Archaeological Sites Attendance	<p>The Survey on Museums and Archaeological Sites Attendance has been producing results since 1970. The survey collects data from the Hellenic Organization of Cultural Resources Development (HOCRED), supervised by the Ministry of Culture and Sports, on the number of visitors and the receipts from the tickets sold in the Museums and Archaeological sites of the country. The corresponding data for the Acropolis Museum is available from December 2009 onwards.</p>
Legal Framework	<p>The survey is conducted since 1970 on a regular basis and it produces results on a monthly and yearly basis, in compliance with the Joint Ministerial Decision 15189/B379/73.</p>
Reference Period	<p>1/8/2023 - 31/8/2023</p>
Methodology and Definitions	<p>The survey is conducted on a monthly basis from data mainly collected from the Hellenic Organization of Cultural Resources Development (HOCRED), supervised by the Ministry of Culture and Sports, on the number of visitors and the receipts from the tickets sold in the Museums and Archaeological sites of the Country. ELSTAT tabulates and presents the data for the whole of the Country, by month and by year.</p> <p>Number of flat rate tickets:</p> <p>From April 1999 onwards, in some museums and the nearby archaeological sites, in addition to the ordinary ticket, a new “flat rate ticket” was established, which is valid for both the museum and the nearby archaeological site. The total number of these flat rate tickets for August 2023 was 166,180.</p>
References	<p>More information on the Survey on Museums and Archaeological Sites Attendance and detailed time series are available on: http://www.statistics.gr/en/statistics/-/publication/SCI21/</p>