



HELLENIC REPUBLIC
HELLENIC STATISTICAL AUTHORITY

Piraeus, February 11, 2021

PRESS RELEASE

ISSUING OF MOTOR VEHICLE LICENSES: JANUARY 2021

The Hellenic Statistical Authority announces that in January 2021, 15,983 road motor cars (both new and used from abroad) were put into circulation for the first time, recording a 28.5% decrease compared with the corresponding month of 2020 when the number of road motor cars was 22,355. In January 2020, an 8.3% increase had been observed in comparison with the corresponding month of 2019 (Table 1, Graphs 1,2,3,5). A total number of 8,478 new cars were put into circulation in January 2021 compared with 10,303 in January 2020, recording a 17.7% decrease.

The new motorcycles over 50cc (both new and used from abroad) that were put into circulation for the first time in January 2021 amounted to 1,957, against 2,505 in 2020, thus recording a 21.9% decrease. In January 2020, a 28.1% increase had been observed in comparison with the corresponding month of 2019 (Table 1, Graph 4). Out of the above motorcycles 1,704 were new, while the corresponding figure in January 2020 was 2,274, recording a 25.1% decrease.

Information on methodological issues:

Sectoral Statistics Division

Transport Statistics Section

Pota Tzortzi, Konstantinos Menexes

Tel: +30 213 135 2187, +30 213 135 3055

Fax: +30 213 135 2757

e-mail: p.tzortzi@statistics.gr, k.menexes@statistics.gr

Information for data provision:

Tel: +30 213 135 2022

e-mail: data.dissem@statistics.gr

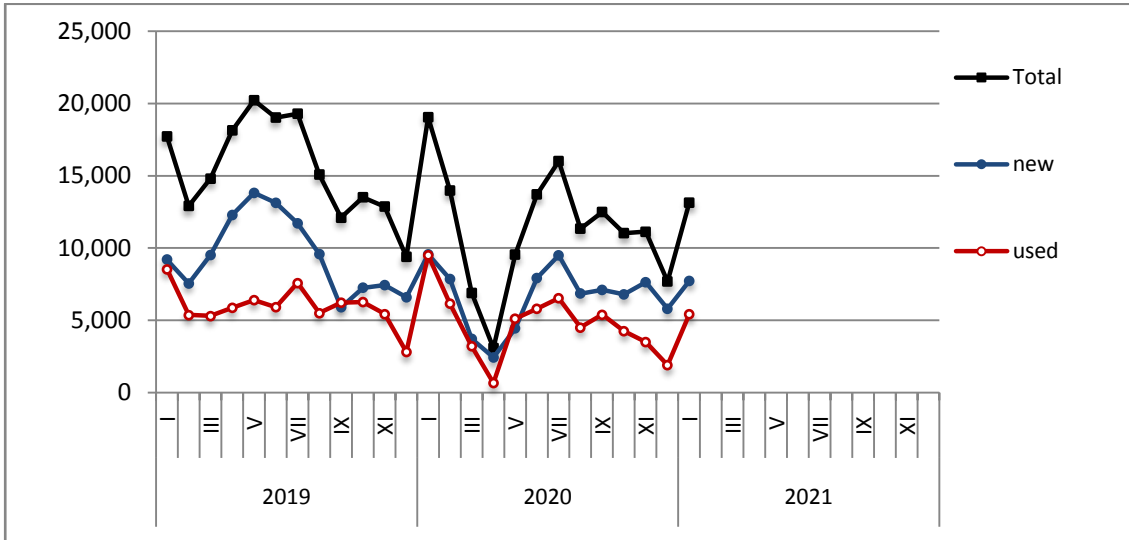
Table 1. Road motor vehicles, both new and used, put into circulation for the first time in Greece: January 2019 - 2021

Category of Road Motor Vehicles	January									Change (%)					
	2019			2020			2021			2020/2019			2021/2020		
	Total	New	Used	Total	New	Used	Total	New	Used	Total	New	Used	Total	New	Used
Greece, total															
Road Motor Vehicles,total	22,590	11,709	10,881	24,860	12,577	12,283	17,940	10,182	7,758	10.0%	7.4%	12.9%	-27.8%	-19.0%	-36.8%
1. Road motor cars	20,634	9,948	10,686	22,355	10,303	12,052	15,983	8,478	7,505	8.3%	3.6%	12.8%	-28.5%	-17.7%	-37.7%
Passenger Cars	17,727	9,198	8,529	19,061	9,574	9,487	13,151	7,729	5,422	7.5%	4.1%	11.2%	-31.0%	-19.3%	-42.8%
Buses	183	75	108	287	50	237	129	21	108	56.8%	-33.3%	119.4%	-55.1%	-58.0%	-54.4%
Lorries	2,724	675	2,049	3,007	679	2,328	2,703	728	1,975	10.4%	0.6%	13.6%	-10.1%	7.2%	-15.2%
2. Motorcycles > 50 cc	1,956	1,761	195	2,505	2,274	231	1,957	1,704	253	28.1%	29.1%	18.5%	-21.9%	-25.1%	9.5%
Prefecture of Attica															
Road Motor Vehicles,total	10,690	7,374	3,316	11,259	7,731	3,528	9,417	6,655	2,762	5.3%	4.8%	6.4%	-16.4%	-13.9%	-21.7%
1. Road motor cars	9,604	6,344	3,260	9,864	6,406	3,458	8,138	5,454	2,684	2.7%	1.0%	6.1%	-17.5%	-14.9%	-22.4%
Passenger Cars	8,835	6,009	2,826	8,955	6,061	2,894	7,179	5,057	2,122	1.4%	0.9%	2.4%	-19.8%	-16.6%	-26.7%
Buses	50	11	39	116	35	81	30	11	19	132.0%	218.2%	107.7%	-74.1%	-68.6%	-76.5%
Lorries	719	324	395	793	310	483	929	386	543	10.3%	-4.3%	22.3%	17.2%	24.5%	12.4%
2. Motorcycles > 50 cc	1,086	1,030	56	1,395	1,325	70	1,279	1,201	78	28.5%	28.6%	25.0%	-8.3%	-9.4%	11.4%

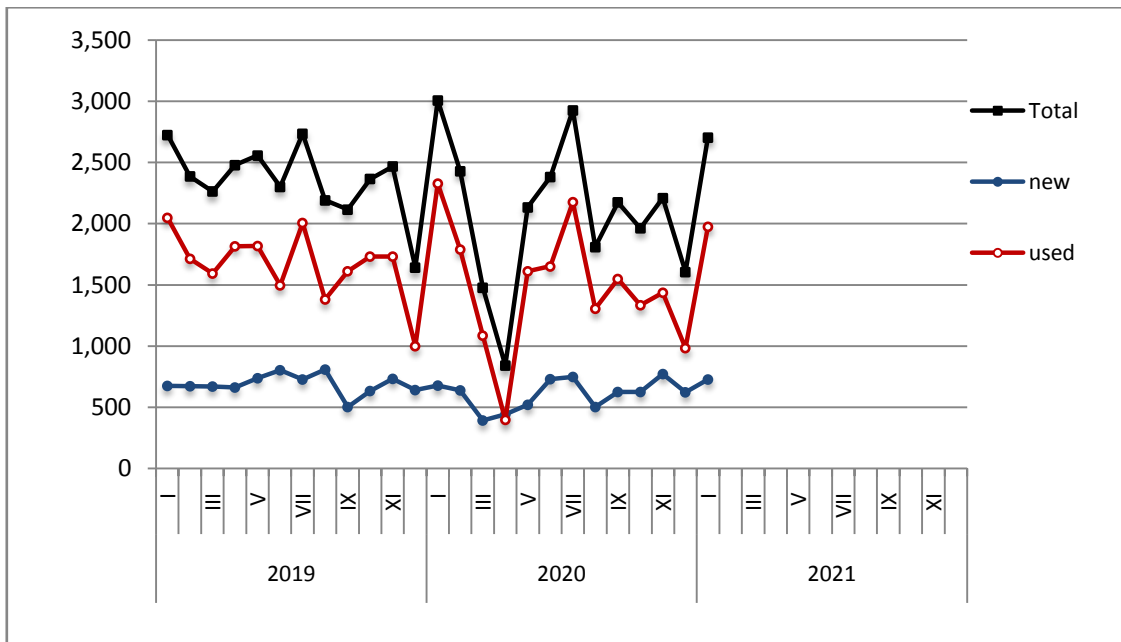
Table 2. Road motor vehicles, both new and used, put into circulation for the first time in Greece: February 2019 - January 2021

Category of Road Motor Vehicles	Average Feb. 2019 - Jan 2020			Average Feb. 2020 - Jan 2021			Change (%)		
							Average Feb. 2020 - Jan 2021 / Average Feb. 2019 - Jan 2020		
	Total	New	Used	Total	New	Used	Total	New	Used
Greece, total									
Road Motor Vehicles,total	21,581	13,468	8,113	16,184	10,020	6,164	-25.0%	-25.6%	-24.0%
1. Road motor cars	18,055	10,249	7,806	13,016	7,113	5,903	-27.9%	-30.6%	-24.4%
Passenger Cars	15,538	9,532	6,006	10,842	6,479	4,363	-30.2%	-32.0%	-27.4%
Buses	142	28	114	120	21	99	-15.5%	-25.0%	-13.2%
Lorries	2,375	689	1,686	2,054	613	1,441	-13.5%	-11.0%	-14.5%
2. Motorcycles > 50 cc	3,526	3,219	307	3,168	2,907	261	-10.2%	-9.7%	-15.0%

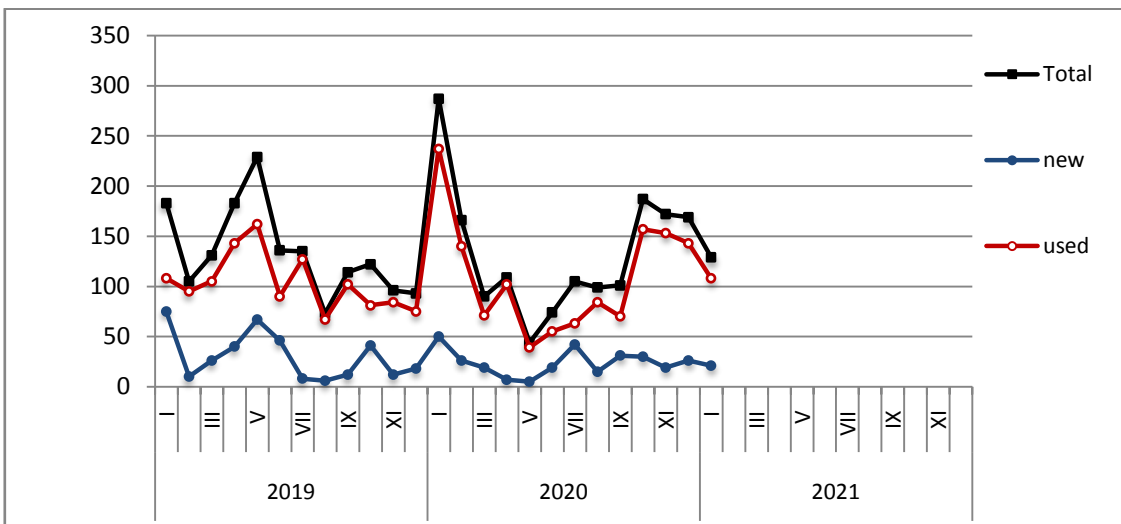
Graph 1: Passenger Cars (January 2019 - January 2021)



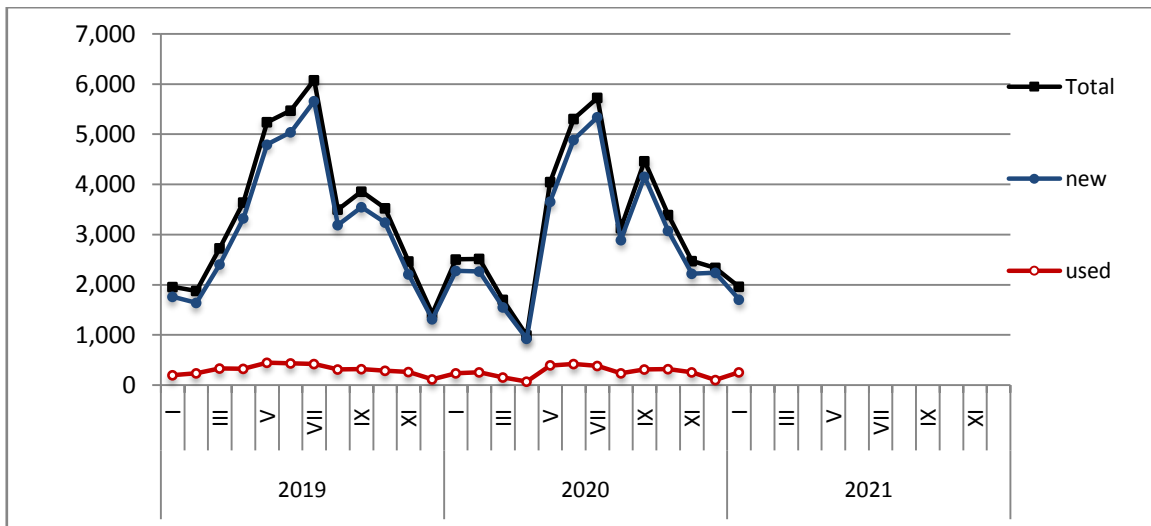
Graph 2: Lorries (January 2019 - January 2021)



Graph 3: Buses (January 2019 - January 2021)



Graph 4: Motorcycles (January 2019 - January 2021)



Graph 5: New Registrations of Motor Vehicles (January 2021)

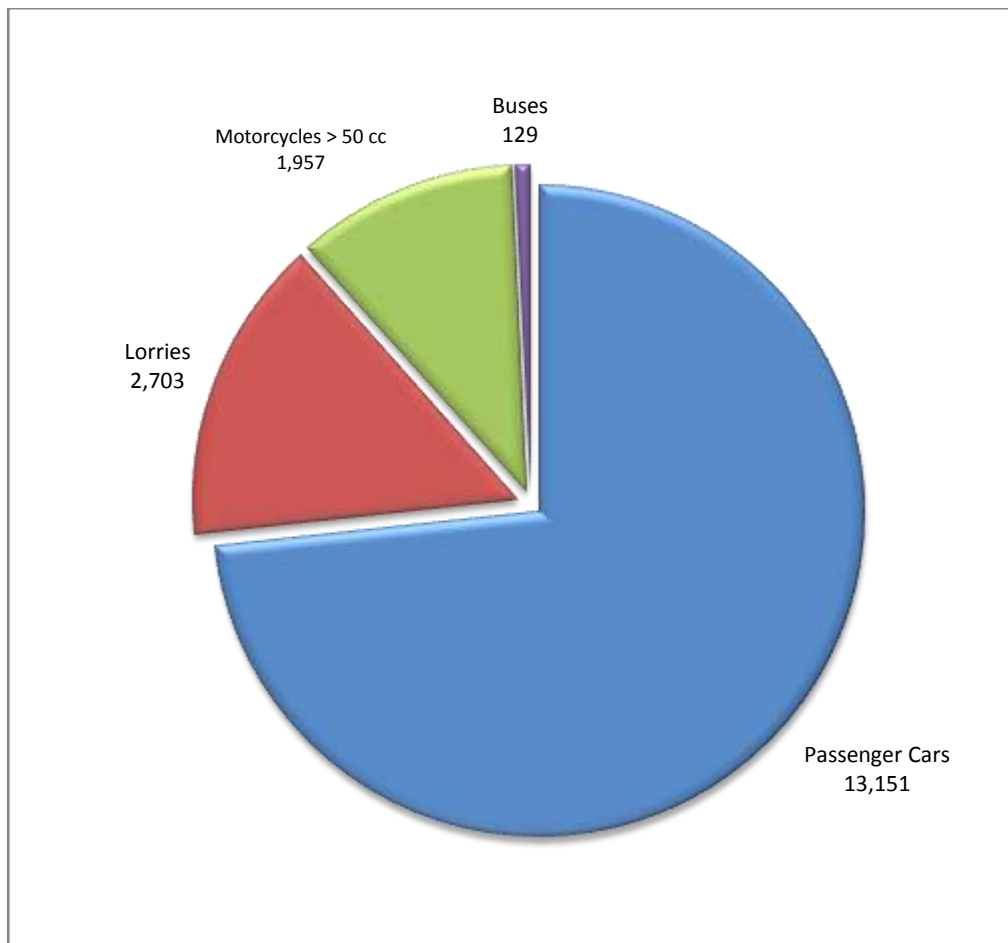


Table 3
Sales of new and used passenger cars by make: January 2021

Make	Passenger cars	
	January	
	new	used
ALFA ROMEO	2	67
ALPINE	-	1
ASTON MARTIN	-	1
AUDI	235	86
BMW	353	144
CHEVROLET	-	51
CITROEN	93	157
CITROEN / DS	308	-
CUPRA	1	-
DACIA	126	87
DAIHATSU	-	13
DETHLEFFS	-	2
DS	23	1
FERRARI	-	5
FIAT	129	318
FORD	313	436
HONDA	20	80
HUMER	-	1
HYMER	1	-
HYUNDAI	513	419
JAGUAR	2	6
JEEP	71	20
KIA	293	85
LAMBORGHINI	-	2
LANCIA	-	19
LAND ROVER	84	57
LEXUS	12	9
MASERATI	-	2
MAZDA	15	23
MCLAREN	-	2
MERCEDES	362	234
MERCEDES ¹	1	-
MINI	165	43
MITSUBISHI	27	73
NISSAN	263	396
NISSAN ¹	1	-
OPEL	476	453
PEUGEOT	860	211
PEUGEOT ²	12	-
PORSCHE	7	57
PSA AUTOMOBILES	2	-
RANGE ROVER	-	9
RENAULT	322	358
ROLLER TEAM	-	1
ROLLS ROYCE	-	1
SAAB	-	3
SEA / MOBILVETT	-	1

Table 3 (cont)
Sales of new and used passenger cars by make: January 2021

Make	Passenger cars	
	January	
	new	used
SEAT	107	49
SKODA	253	82
SMART	6	191
SSANGYONG	-	1
SUBARU	1	8
SUZUKI	19	-
SUZUKI	357	152
TESLA	3	3
TOYOTA	1,269	715
TRIUMPH	-	1
VOLKSWAGEN	433	259
VOLVO	189	26
WARTBURG	-	1
TOTAL	7,729	5,422

- 1 : With 2nd/3rd stage manufacturer in Greece.
- 2 : With 2nd/3rd stage manufacturer abroad.

Graph 6. Sales of new passenger cars by make (January 2021)

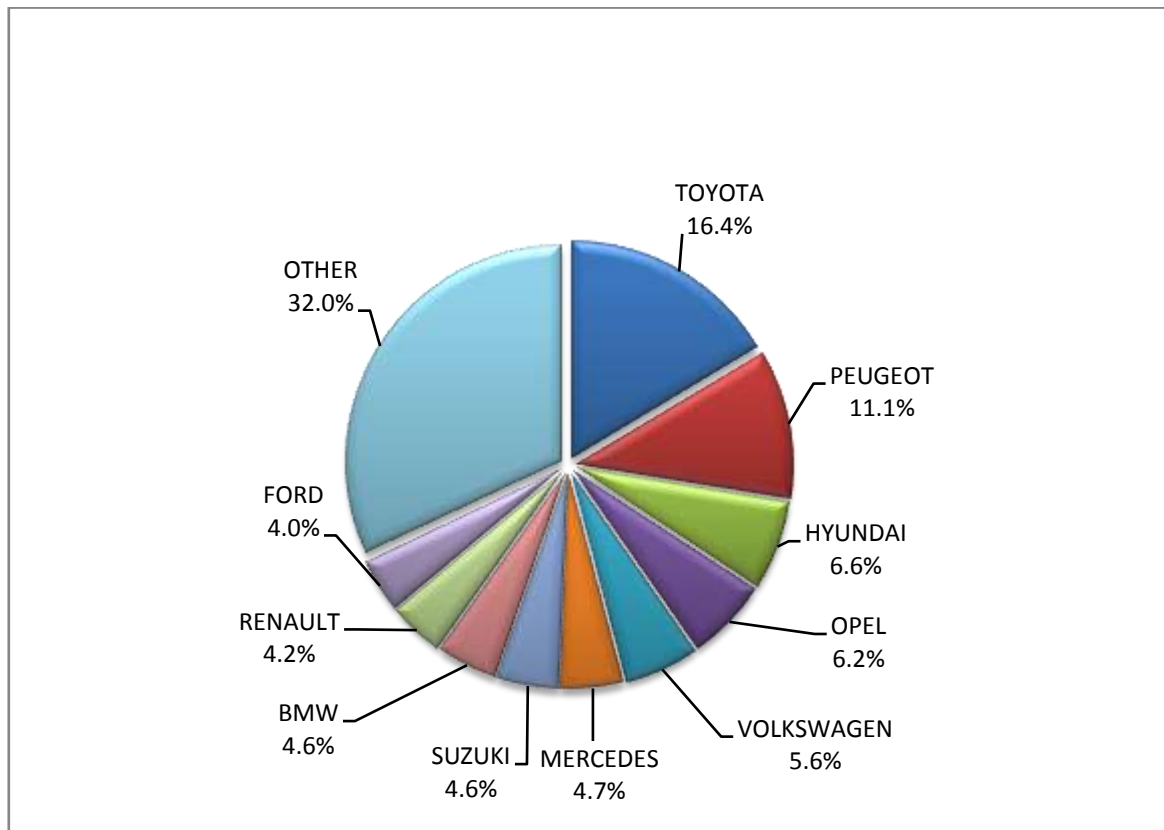


Table 4
Sales of new and used lorries by make: January 2021

Make	Lorries	
	January	
	new	used
BMW	-	1
CIFA	2	-
CITROEN	81	51
DACIA	15	11
DAF	1	54
DAF ¹	2	-
DODGE	-	1
FCA US LLC	-	1
FIAT	87	200
FIAT-IVECO	-	4
FORD	149	246
GMS	-	1
HYUNDAI	-	6
ISUZU	9	30
IVECO	-	20
IVECO ¹	18	-
IVECO MAGIRUS	-	9
JEEP	-	1
KASSBOHRER	-	1
LAND ROVER	-	1
MAHINDRA	-	1
MAN	-	98
MAN ¹	3	-
MAZDA	-	17
MERCEDES	16	493
MERCEDES ¹	4	2
MITSUBISHI	17	47
MITSUBISHI ¹	2	-
NISSAN	45	80
OPEL	15	64
PEUGEOT	104	59
PFAU	-	1
PIAGGIO	1	1
PIAGGIO ¹	1	-
RENAULT	6	92
SCANIA	3	99
SKODA	-	4
SSANGYONG	-	1
TOYOTA	122	48
VOLKSWAGEN	18	93
VOLKSWAGEN ¹	2	-

Table 4 (cont)
Sales of new and used lorries by make: January 2021

Make	Lorries	
	January	
	new	used
VOLVO	3	137
VOLVO ¹	2	-
TOTAL	728	1,975

1 : With 2nd/3rd stage manufacturer in Greece.

2 : With 2nd/3rd stage manufacturer abroad.

Graph 7. Sales of new lorries by make (January 2021)

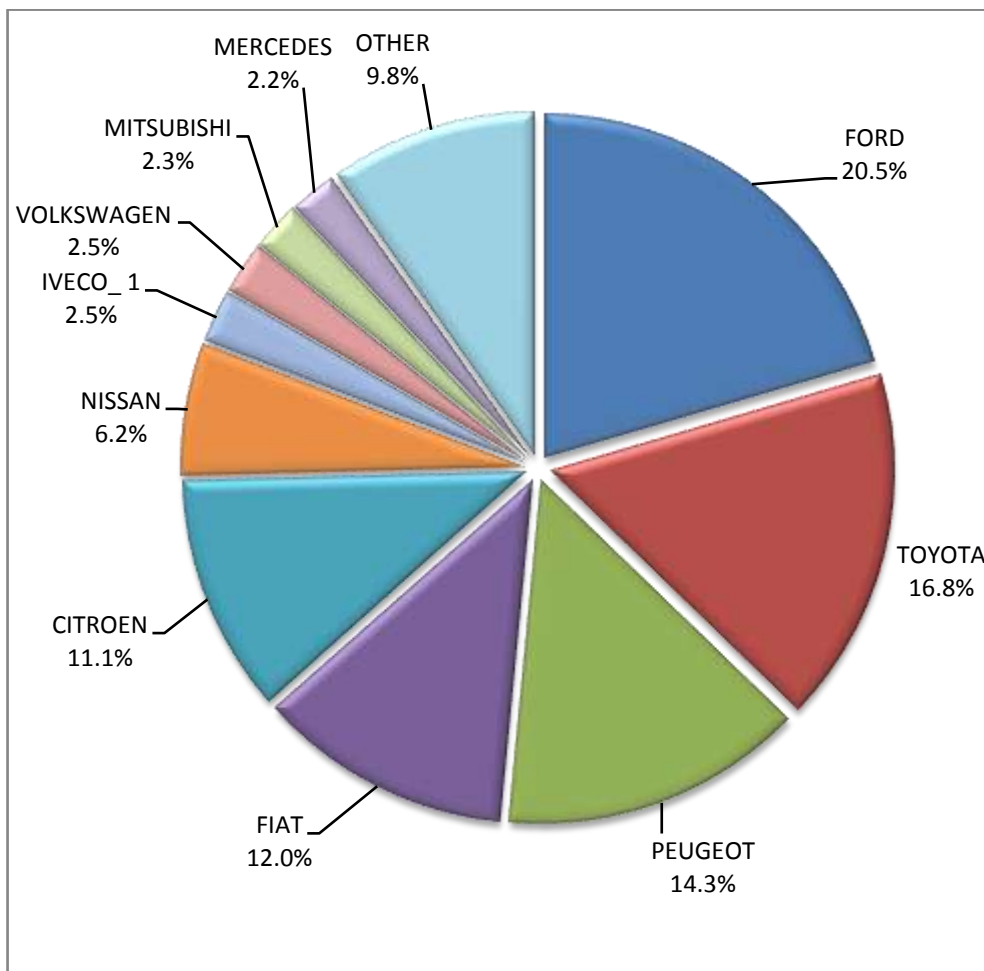


Table 5
Sales of new and used buses by make: January 2021

Make	Buses	
	January	
	new	used
BOVA	-	2
FIAT ²	6	-
FORD	-	2
IRISBUS	-	1
IRIZAR	1	-
IVECO	-	3
MAN	-	4
MAN/NEOPLAN	-	1
MERCEDES	1	72
MERCEDES ¹	9	-
NEOPLAN	-	1
SCANIA	-	2
SCANIA ²	1	-
SETRA	1	9
VOLVO	-	1
VAN HOOL	-	2
VOLVO	-	8
VOLVO / IRIZAR	2	-
TOTAL	21	108

1 : With 2nd/3rd stage manufacturer in Greece.

2 : With 2nd/3rd stage manufacturer abroad.

Table 6
Sales of new and used motorcycles by make or manufacturer: January 2021

Make	Motorcycles	
	January	
	new	used
AGUSTA MV	-	1
APRILIA	2	1
BAJAJ	2	-
BENELLI	6	-
BETA	5	1
BMW	50	19
BRIXTON	3	-
CFMOTO	18	-
DAYANG, DAYTONA MOTORS, NIPPONIA, KUBA	38	1
DAYANG, DAYTONA MOTORS, NIPPONIA, SALCANO	115	-
DAYANG, ECOCREMO, ECOOTER, ECOOTOR,AGM, ORCAL, SUMCO	2	-
DUCATI	7	7
FD MOTORS, FASPIDER	1	-

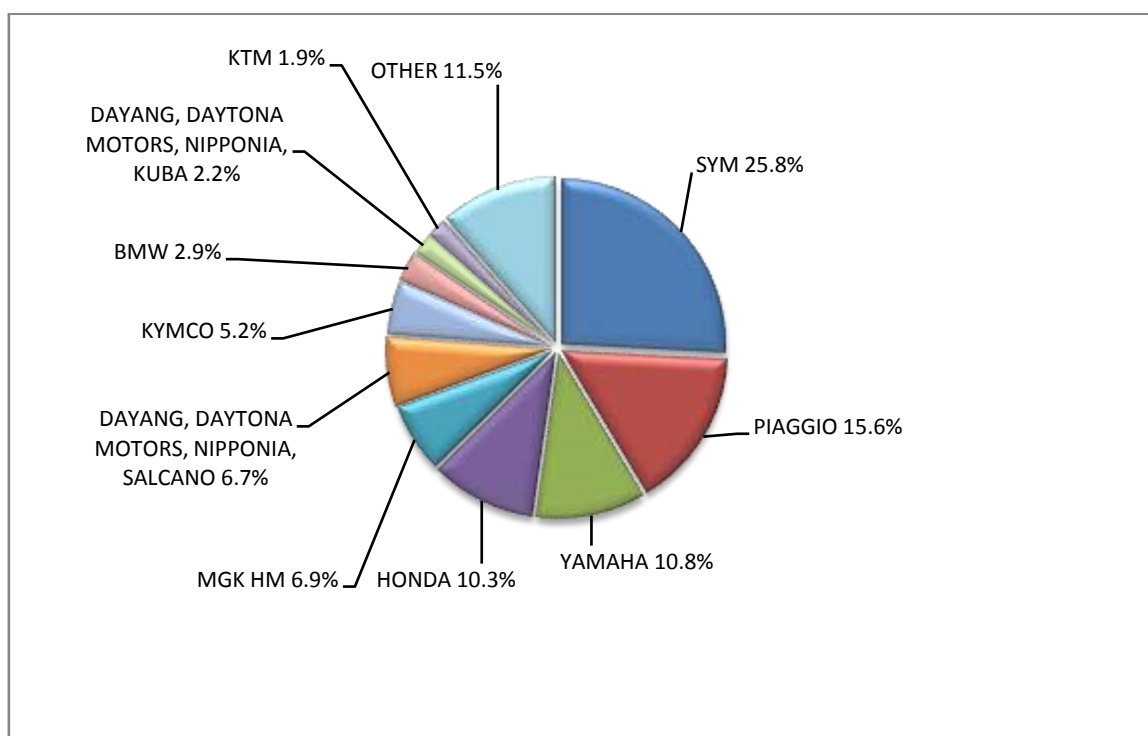
Table 6 (cont)
Sales of new and used motorcycles by make or manufacturer: January 2021

Make	Motorcycles	
	January	
	new	used
HARLEY DAVIDSON	7	2
HESHAN GOUJI NANLIAN MOTORCYCLE INDUSTRY, ORCAL, AJS, HERALD MOTOR COMPANY, MACBOR	1	-
HONDA	176	56
HORWIN	1	-
HSUN, HISUN, APACHI, Mx, MASAI, HYTRACK, TRAPPER, PUMAREX, GEON, ASYAMOTOR, DAYTONA MOTORS, KRAL	4	-
HUSQVARNA	12	6
INDIAN MOTORCYCLE	6	-
JIAYUAN	3	-
JINLANG, ZUNDAPP, XHODNA, APGmoto, COLIBRI, RAZORY, VIARELLI, SUMCO, FLEX TECH, IVA, TNT moto	1	-
KAWASAKI	10	3
KTM	33	19
KWANG YANG	-	1
KYMCO	89	24
Lingzhida, LINZDA, LINDN, LINYI, LONGMAO, NLIGHT	1	-
LONCIN, VOGÉ, KUBA, RKS, ITALIKA, SUNRACE, SKY, MALAGUTI, SUPERBIKE, ROCKET, NOVELBAT	2	-
LONCIN, KUBA, RKS, ITALIKA, SUNRACE, SKY, MALAGUTI, SUPERBIKE, ROCKET, NOVELBAT, TIGERMOTO, GREEN	1	-
LONGJIA, ORCAL, TNT MOTOR, BEELINE, VGA, ITALJET, GEMINI, lexmoto, Jahanro, italo, NECO	2	-
MGK HM	117	1
MODENAS	1	-
MOTO S.P.A	3	-
MV AGUSTA	1	-
NIU, NUUV	1	-
PEUGEOT	4	-
PIAGGIO	266	20
POLARIS	1	-
QJ, QJIANG, KEEWAY, LEONE, KUBA, RKS, TELL, EMPIRE KEEWAY, BENELLI, VENGO	4	-
QJ, QJIANG, KEEWAY, LEONE, RKS, BENELLI, EMPIRE KEEWAY, KUBA	10	-
QJ, QJIANG, KEEWAY, LEONE, tell, KUBA, RKS, BENELLI, VENGO	1	-
RVM, MACBOR, COLOVE, ORCAL, DAYTONA MOTORS	3	-
SAKURA, GOLDENLION, E.F.O., Fauro, Viverra, Nitrox, STRELLA City, Artisan	3	-
SAN YANG	-	1
SHANYANG, ATLAS PANTHER, YAMAZUKI MOTO, MOTORKING, Hirlee, XB	4	-
SHENGWO NEW ENERGY, YUKI	1	-
SILENCE, SCUTUM, ETRIX	1	-
SKYTEAM, SACIN, CSR, METALCO, SOKUDO, BAZUKA, MINICO, MOTOSBASI, MOTOS BORDOY, SUMKO, ROXON, MONKEY BIKES	3	-
SUZUKI	8	10
SYM	440	14
TAYO, HAOJIANG, ZHONGYU, THUMP, THUMPSTAR, KIDEN, ZONTES, Junak, SENKE, TANNY, TYAN, ROMET	6	-
TAYO, HAOJIANG, ZHONGYU, THUMP, THUMPSTAR, KIDEN, ZONTES, Junak, SENKE, TANNY, TYAN, ROMET, ROMET MOTORS	4	-
TAYO, HAOJIANG, ZHONGYU, THUMP, THUMPSTAR, KIDEN, ZONTES, Junak, SENKE, TANNY, TYAN, ROMET, ROMET MOTORS, ROUTER	1	-
TIANYING, RIYA, HONGYUNDA, TYM, HONLING	1	-

Table 6 (cont)
Sales of new and used motorcycles by make or manufacturer: January 2021

Make	Motorcycles	
	January	
	new	used
TRIUMPH	7	5
VMOTO-SOCO, E-MAX, VMOTO, SUPER SOCO	4	-
WONJAN, SAMADA	1	-
XGJAO, ZIPP, TOROS, ROMET, ROMET MOTORS, ROUTER, VEEROAD, DAYTONA MOTORS, GEMINI, MH MOTORCYCLES, MTG MOTORS	5	-
XINRI, SUNRA ,APACHI, ISILDAR, ISILDAR APACHI, Wayscral, KRAL	1	-
XINYANG	1	-
YAMAHA	184	61
YAMAHA, MBK	10	-
YINGANG, BENYI, ROMET MOTORS, YUKI, ROUTER, MOTORAN, DAYTONA MOTORS, M1NSK, HAMACHI, KUBA, MONDIAL	1	-
YINXIANG, MONDIAL, GEMINI, TCB	2	-
ZHONGNENG, ZNEN, AGM, AJS, YUKI, COLIBRI, EUROCKA, BTC, NOVA MOTORS, LEXMOTO, Actionbikes Motors	1	-
ZHONGNENG, ZNEN, AGM, AJS, YUKI, COLIBRI, EUROCKA, BTC, NOVA MOTORS, LEXMOTO	4	-
ZONGSHEN, ZIPSTAR, ICONE, JUNAK, Lexmoto, MH Motorcycles, M1NSK, MONDIAL, ROMET MOTORS, SINNIS	1	-
TOTAL	1,704	253

Graph 8. Sales of new motorcycles (January 2021)



EXPLANATORY NOTES

Survey on the issuing of new road motor vehicle circulation licenses	The survey on the issuing of new motor vehicle circulation licenses is a census survey. The released data give information, at country level, on the brand and type of the motor vehicle, as well as whether it is new or used. The survey does not include vehicles that move on rails, trolley busses, agricultural tractors and machinery. In addition, the following are excluded: all motor vehicles of the Armed Forces, Police, Fire Brigade, State Services, Diplomatic Corps, Foreign Missions, and Invalids of Wars, as well as motorcycles with a cylinder capacity less than 50 cc.
Legal basis	Law 3832/2010
Reference Period	January 2021
Coverage	The production of monthly data is based on the registers held by the Ministry of Infrastructure, Transport and Networks, which records all the monthly changes observed in the vehicle registration licenses at country level.
Definitions	<p>Road motor vehicle is any vehicle that, irrespective of the number of wheels, is moved by an engine and is designed to transport persons or cargo or both of them, either they are on the same single vehicle or on a trailer carried by the main motor vehicle.</p> <p>New road motor vehicle is any motor vehicle that is registered for the first time in Greece during the reference month and has not been put into circulation in any other country.</p> <p>Used motor vehicle is any motor vehicle that is registered for the first time in Greece and has been imported as a used one from abroad</p> <p>Passenger motor vehicle: it is a motor vehicle designed to carry mostly people, having no more than 9 seats, including the driver's seat.</p> <p>Bus: it is a motor vehicle, which is designed to carry mostly people, having more than 10 seats, including the driver's seat. In the corresponding tables of this Press Release, this category also includes articulated buses.</p> <p>Lorry: it is motor vehicle designed to carry mostly cargo. In the corresponding tables of this Press Release, this category also includes tractors, tow trucks, articulated tractors, and trucks with trailers.</p> <p>Motorcycle: any two-wheeled motor vehicle, with or without sidecar, with maximum authorized design speed over 45 km/h, or in case it is powered by a combustion engine, with a cylinder capacity of 50 cc or over. In the corresponding tables of this Press Release, this category also includes the three-wheeled motor vehicles – motor tricycles.</p> <p>Tricycle motor vehicle: it is a motor vehicle with three symmetrical wheels with maximum authorized design speed over 45 km/h, or in case it is powered by a combustion engine, with a cylinder capacity over the 50 cc. This category also includes four-wheel vehicles, except the light four-wheel motorcycles, whose empty vehicle tare (excluding the weight of the fuel or mixture of fuel-oil or the weight of the batteries for electric cars) is up to 400 kg in the case the vehicle is designed for passenger use or up to 550 kg in case the vehicle is designed to carry cargo and whose engine is up to 15KW.</p>
Methodology	Exhaustive Survey. The primary data derive from the Ministry of Infrastructure, Transport and Networks and are based on the issuing of new circulation licenses as they are registered by the Regional Offices for Transport and Communications.
References	More information (graphs, tables) concerning the survey on the issuing of new motor vehicle circulation licenses are available on the webpage of ELSTAT, www.statistics.gr , under the link http://www.statistics.gr/en/statistics/-/publication/SME24/