



HELLENIC REPUBLIC

HELLENIC STATISTICAL AUTHORITY

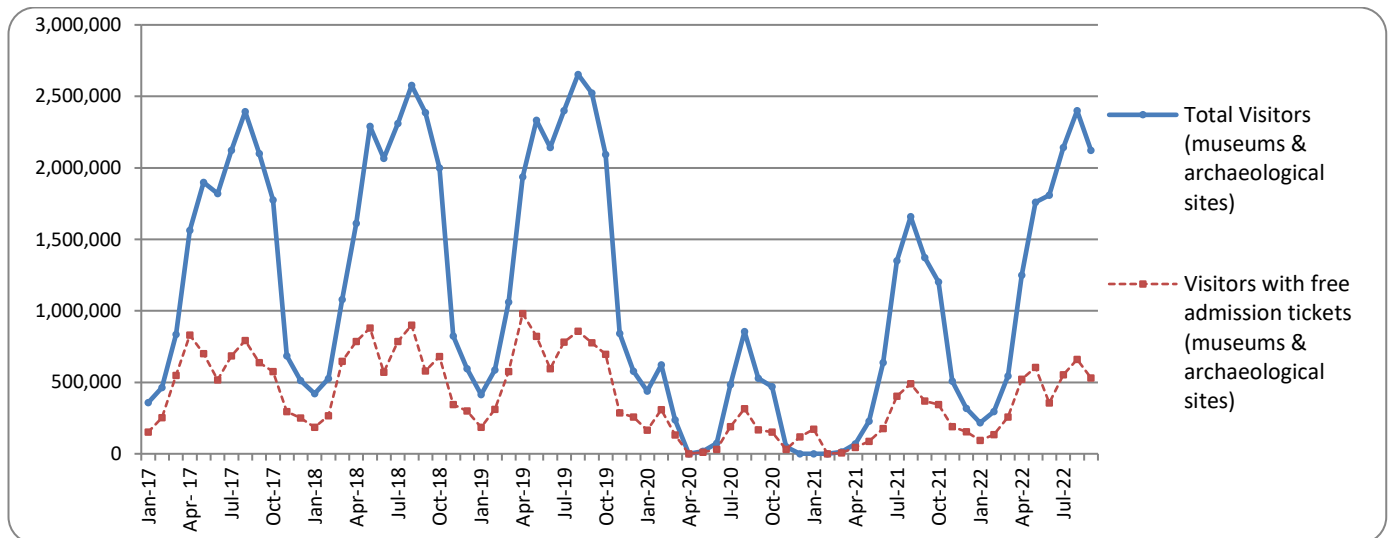
Piraeus, 18 January 2023

SURVEY ON MUSEUMS AND ARCHAEOLOGICAL SITES ATTENDANCE SEPTEMBER 2022

The Hellenic Statistical Authority (ELSTAT) announces the results of the *Survey on Museums and Archaeological Sites Attendance* for September 2022. More specifically:

- During September 2022 compared with the corresponding month of 2021, Museums recorded a 65.2% increase in the number of visitors and a 54.0% increase in the number of free admission visitors, as well as a 76.5% increase in their receipts (Table 1).
- As regards Archaeological sites, in September 2022 compared with the corresponding month of 2021, an increase of 50.5% was recorded at the number of visitors, of 38.8% in the number of free admission visitors and of 65.2% in the corresponding receipts (Table 1).
- During the nine month period from January to September 2022, compared to the corresponding period of 2021, an increase of 158.2% was recorded in the number of visitors, of 166.1% in the number of free admission visitors and of 146.6% in the relevant receipts, given the fact that in the framework of the preventative measures against the Covid-19 pandemic, the operation of the museums was gradually suspended from November 1st 2020 until May 13th 2021 (Table 2).
- As regards Archaeological sites, during the nine month period from January to September 2022, compared to the corresponding period of 2021, an increase of 126.7% was recorded in the number of visitors, while an increase of 121.2% was observed in the number of free admission visitors and of 139.3% in the relevant receipts, given the suspension of operation of Archaeological sites from November 7th 2020 until March 21st 2021 (Table 2).

Graph 1: Visitors of Museums and Archaeological sites (January 2017 – September 2022)



Information on methodological issues:

Sectoral Statistics Division
Tourism and Culture Statistics Section
Head of Section: Eleni Papadopoulou
Tel: +30 213 135 2168
e-mail: e.papadopoulou@statistics.gr

Information for data provision:

Tel. +30 213 135 2022, 2308, 2310
e-mail: data.dissem@statistics.gr

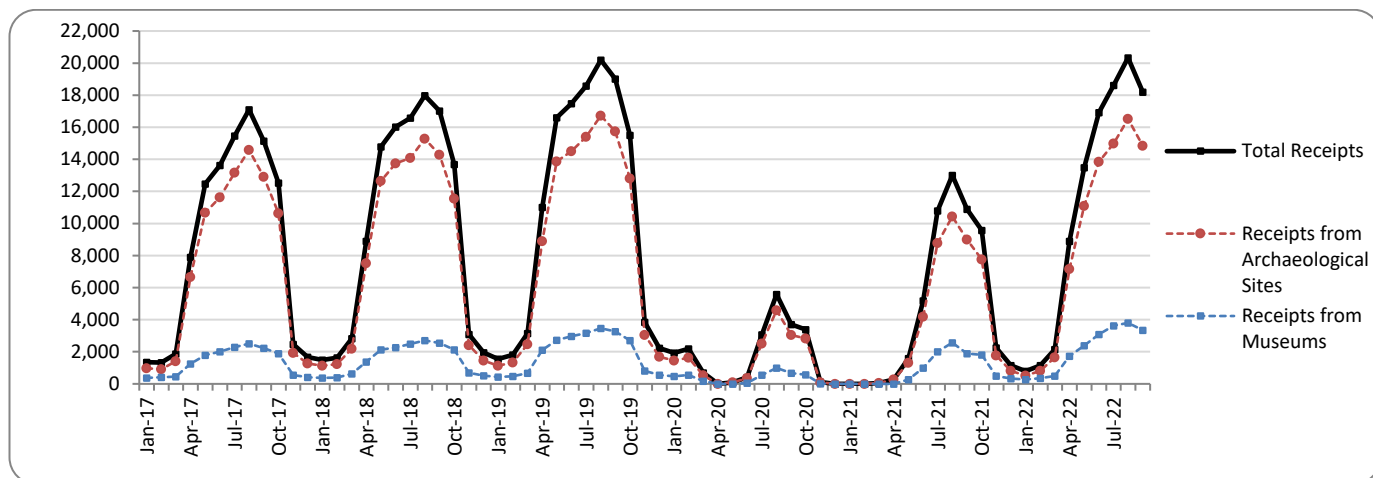
**TABLE 1: VISITORS OF MUSEUMS AND ARCHAEOLOGICAL SITES - TOTAL RECEIPTS
(SEPTEMBER 2021 & SEPTEMBER 2022)**

I. NUMBER OF VISITORS			
Museums and Archaeological sites	2021	2022	Change 2022/2021
Total number of visitors (A+B)	1,376,699	2,123,192	54.2%
A. Museums (C+E)	345,082	570,116	65.2%
Acropolis Museum	85,578	168,615	97.0%
National Archaeological	30,299	56,786	87.4%
Ancient Olympia	6,520	9,128	40.0%
Palace of the Grand Master (Rhodes)	29,767	43,408	45.8%
Herakleion Archaeological (Crete)	23,685	36,598	54.5%
White Tower	10,560	19,223	82.0%
Delphi	9,134	16,995	86.1%
Other museums	149,539	219,363	46.7%
B. Archaeological Sites (D+F)	1,031,617	1,553,076	50.5%
Epidavros ⁽¹⁾	34,971	50,892	45.5%
The Acropolis of Mycenae & Atreus' Treasure	29,282	45,529	55.5%
The Acropolis of Athens	206,507	385,378	86.6%
Sounio	25,780	35,224	36.6%
The Acropolis of Lindos	78,808	102,211	29.7%
Royal Tombs of Vergina	9,768	17,483	79.0%
Ancient Olympia	30,801	48,957	58.9%
Knossos (Crete)	83,161	123,218	48.2%
Phaistos (Crete)	11,068	12,888	16.4%
Ancient Korinthos ⁽¹⁾	11,461	20,572	79.5%
Mystras ⁽¹⁾	14,469	17,286	19.5%
Delphi	27,016	45,320	67.8%
Other archaeological sites	468,525	648,118	38.3%
II. VISITORS WHO PAID TICKET			
	2021 ⁽²⁾	2022	Change 2022/2021
Total number of visitors who paid ticket (C+D)	1,006,952	1,592,962	58.2%
C. Museums	233,315	397,955	70.6%
D. Archaeological sites	773,637	1,195,007	54.5%
III. VISITORS WITH FREE ADMISSION TICKETS			
	2021 ⁽²⁾	2022	Change 2022/2021
Total number of visitors with free admission ticket (E+F)	369,747	530,230	43.4%
E. Museums	111,767	172,161	54.0%
F. Archaeological sites	257,980	358,069	38.8%
IV. RECEIPTS (euros)			
	2021 ⁽²⁾	2022	Change 2022/2021
Total Receipts (G+H)	10,887,345	18,201,894	67.2%
G. Museums	1,898,503	3,351,011	76.5%
H. Archaeological sites	8,988,842	14,850,883	65.2%

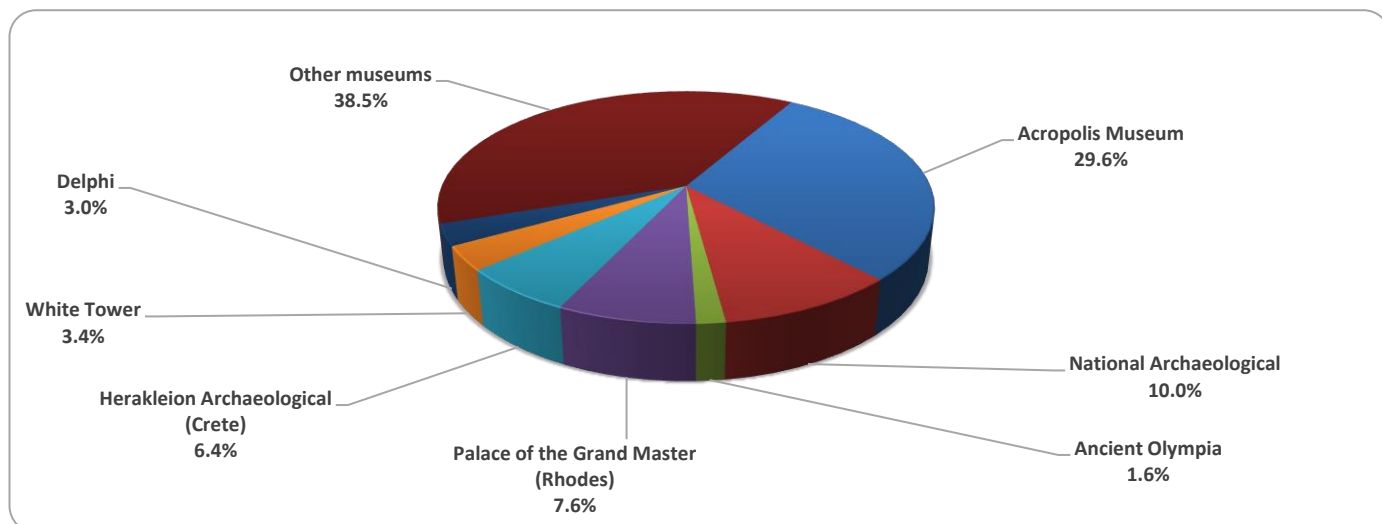
⁽¹⁾ Flat rate ticket, valid both for the museum and the archaeological site.

The following graphs depict the evolution of the receipts of Museums and Archaeological Sites (Graph 2), as well as the number of visitors by Museum (Graph 3) and by Archaeological Site (Graph 4).

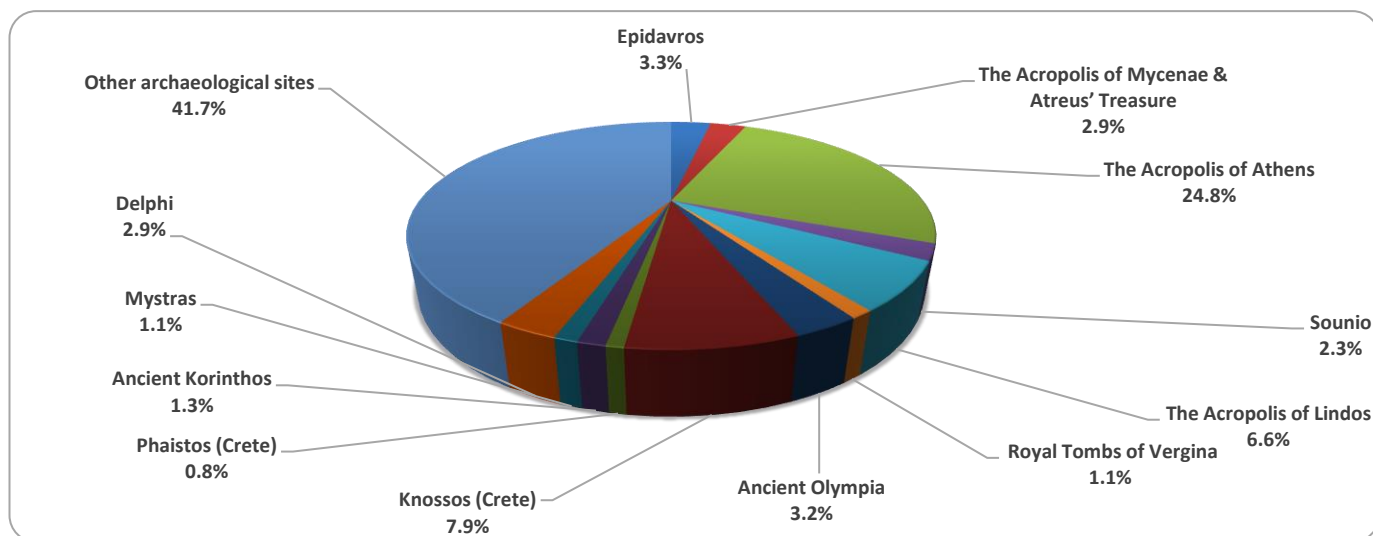
Graph 2: Receipts from Museums and Archaeological Sites (January 2017 – September 2022)
(in thousand euro)



Graph 3: Percentage distribution of visitors by Museum, September 2022



Graph 4: Percentage distribution of visitors by Archaeological site, September 2022



**TABLE 2: VISITORS OF MUSEUMS AND ARCHAEOLOGICAL SITES - TOTAL RECEIPTS
(2020, 2021, JANUARY- SEPTEMBER 2021, 2022)**

I. VISITORS					
Museums and Archaeological sites	2020 ⁽²⁾	2021 ⁽²⁾	JANUARY -SEPTEMBER		change 2022/2021
			2021 ⁽²⁾	2022	
Total number of visitors (A+B)	3,772,828	7,357,026	5,334,078	12,537,171	135.0%
A. Museums (C+E)	1,100,904	2,047,481	1,416,115	3,656,630	158.2%
Acropolis Museum	325,969	547,908	369,519	1,122,596	203.8%
National Archaeological	98,175	189,208	124,063	356,098	187.0%
Ancient Olympia	21,956	34,367	23,627	70,595	198.8%
Palace of the Grand Master (Rhodes)	54,572	142,530	109,090	222,274	103.8%
Herakleion Archaeological (Crete)	63,027	127,574	96,063	201,792	110.1%
White Tower	62,007	77,983	51,651	142,347	175.6%
Delphi	41,984	58,102	37,818	114,747	203.4%
Other museums	433,214	869,809	604,284	1,426,181	136.0%
B. Archaeological Sites (D+F)	2,671,924	5,309,545	3,917,963	8,880,541	126.7%
Epidavros ⁽¹⁾	103,532	182,118	136,081	316,854	132.8%
The Acropolis of Mycenae & Atreus' Treasure	78,839	156,227	110,952	294,844	165.7%
The Acropolis of Athens	620,132	1,219,717	840,584	2,378,305	182.9%
Sounio	100,319	171,348	123,014	248,013	101.6%
The Acropolis of Lindos	156,462	349,418	276,477	513,753	85.8%
Royal Tombs of Vergina	37,586	56,790	39,186	122,780	213.3%
Ancient Olympia	64,759	143,549	106,375	271,094	154.8%
Knossos (Crete)	175,927	445,160	343,407	699,139	103.6%
Phaistos (Crete)	31,885	48,599	36,967	60,910	64.8%
Ancient Korinthos ⁽¹⁾	31,981	59,271	39,313	115,983	195.0%
Mystras ⁽¹⁾	36,352	78,762	59,239	115,749	95.4%
Delphi	75,983	146,061	100,225	260,175	159.6%
Other archaeological sites	1,158,167	2,252,525	1,706,143	3,482,942	104.1%
II. VISITORS WHO PAID TICKET					
	2020 ⁽²⁾	2021 ⁽²⁾	JANUARY -SEPTEMBER		change 2022/2021
			2021 ⁽²⁾	2022	
Total number of visitors who paid ticket (C+D)	2,268,397	5,090,418	3,757,386	8,826,897	134.9%
C. Museums	605,426	1,289,896	919,040	2,334,031	154.0%
D. Archaeological sites	1,662,971	3,800,522	2,838,346	6,492,866	128.8%
III. VISITORS WITH FREE ADMISSION TICKETS					
	2020 ⁽²⁾	2021 ⁽²⁾	JANUARY -SEPTEMBER		change 2022/2021
			2021 ⁽²⁾	2022	
Total number of visitors with free admission ticket (E+F)	1,504,431	2,266,608	1,576,692	3,710,274	135.3%
E. Museums	495,478	757,585	497,075	1,322,599	166.1%
F. Archaeological sites	1,008,953	1,509,023	1,079,617	2,387,675	121.2%
IV. RECEIPTS (euros)					
	2020 ⁽²⁾	2021 ⁽²⁾	JANUARY -SEPTEMBER		change 2022/2021
			2021 ⁽²⁾	2022	
Total Receipts (G+H)	21,176,036	54,735,194	41,772,179	100,535,976	140.7%
G. Museums	4,047,401	10,385,644	7,743,435	19,092,517	146.6%
H. Archaeological sites	17,128,635	44,349,550	34,028,744	81,443,459	139.3%

⁽¹⁾ Flat rate ticket, valid both for the museum and the archaeological site.

⁽²⁾ The operation of Museums was suspended from March 14th until June 16th 2020 and again gradually from November 1st 2020 until May 13th 2021. The operation of Archaeological Sites was suspended from March 14th until May 17th 2020 and from November 7th 2020 until March 21st 2021, in the framework of the preventative measures against the Covid-19 pandemic.

EXPLANATORY NOTES

Survey on Museums and Archaeological Sites Attendance	The Survey on Museums and Archaeological Sites Attendance has been producing results since 1970. The survey collects data from the Hellenic Organization of Cultural Resources Development (HOCRED), supervised by the Ministry of Culture and Sports, on the number of visitors and the receipts from the tickets sold in the Museums and Archaeological sites of the country. The corresponding data for the Acropolis Museum is available from December 2009 onwards.
Legal Framework	The survey is conducted since 1970 on a regular basis and it produces results on a monthly and yearly basis, in compliance with the Joint Ministerial Decision 15189/B379/73.
Reference Period	1/9/2022 - 30/9/2022
Methodology and Definitions	The survey is conducted on a monthly basis from data mainly collected from the Hellenic Organization of Cultural Resources Development (HOCRED), supervised by the Ministry of Culture and Sports, on the number of visitors and the receipts from the tickets sold in the Museums and Archaeological sites of the Country. ELSTAT tabulates and presents the data for the whole of the Country, by month and by year.
	Number of flat rate tickets: From April 1999 onwards, in some museums and the nearby archaeological sites, in addition to the ordinary ticket, a new “flat rate ticket” was established, which is valid for both the museum and the nearby archaeological site. The total number of these flat rate tickets for September 2022 was 136,328
References	More information on the Survey on Museums and Archaeological Sites Attendance and detailed time series are available on: http://www.statistics.gr/en/statistics/-/publication/SCI21/-