



PRESS RELEASE

INDUSTRIAL PRODUCTION INDEX: October 2022, y-o-y decrease of 2.5%

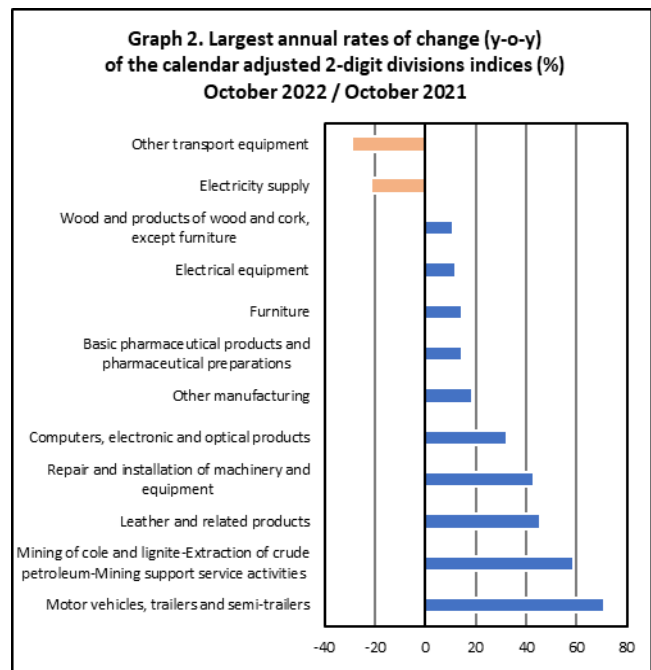
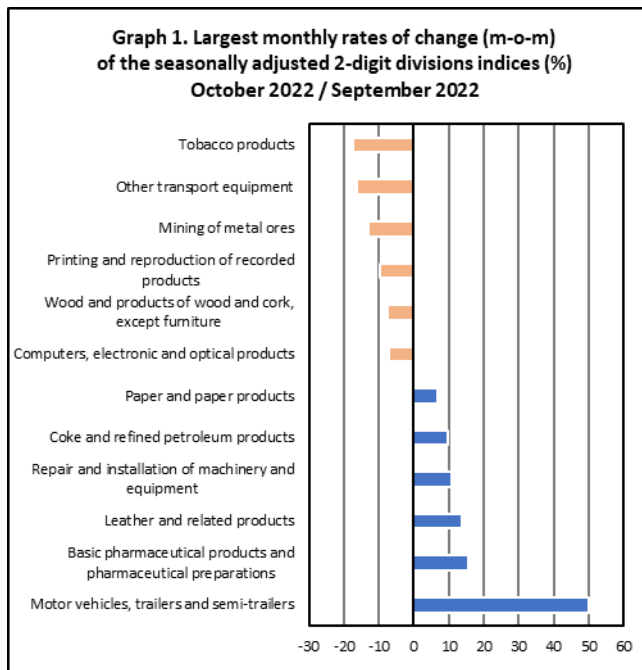
The Hellenic Statistical Authority announces the Industrial Production Index (IPI) with base year 2015=100.0 for October 2022, on the basis of provisional and working day adjusted data, as follows:

The Overall Industrial Production Index in October 2022 recorded a decrease of 2.5% compared with October 2021. The Overall IPI in October 2021 increased by 16.7% compared with the corresponding index in October 2020 (Table 1).

The average Overall Industrial Production Index for the period from January to October 2022 recorded an increase of 3.0% compared with the average IPI of the period from January to October 2021 (Table 2).

The seasonally adjusted Overall Industrial Production Index in October 2022 recorded an increase of 0.6% compared with the corresponding index of September 2022 (Table 4).

The index of motor vehicles, trailers and semi-trailers division recorded the greatest percentage increase, whereas the index of tobacco products division showed the greatest percentage decrease in October 2022 compared with September 2022. Comparing the indices of October 2022 with the corresponding indices of October 2021, the greatest percentage decrease was recorded in other transport equipment division, while the highest percentage increase was recorded in motor vehicles, trailers and semi-trailers division (Tables 1 and 4).



Information on methodological issues:

Business Statistics Division
Manufacture-Construction Indices and Industrial Products Section
Head of the Section: Diamantaki Aikaterini
Tel: +30 213 135 2056
E-mail: a.diamantaki@statistics.gr

Information on data provision:

Tel: +30 213 135 2022, 2308, 2310
E-mail: data.dissem@statistics.gr

Evolution of the Industrial Production Index in October 2022

I. Annual changes: October 2022 / October 2021 (Table 1)

The 2.5% decrease of the working day adjusted Overall IPI in October 2022, compared with the corresponding index in October 2021, is due to the annual changes of the sub-indices in the following industrial sections:

1. Decrease of:

- 21.6% in the Electricity Supply Index.

2. Increase of:

- 0.4% in the Water Supply Index.
- 2.4% in the Manufacturing Index. The increase was mainly the result of the annual changes of the sub-indices in the following 2-digit divisions: motor vehicles, trailers and semi-trailers, leather and related products, repair and installation of machinery and equipment, computers, electronic and optical products, other manufacturing.
- 2.8% in the Mining and Quarrying Index. The increase was the result of the annual changes of the sub-indices in the following 2-digit divisions: mining of coal and lignite - extraction of crude petroleum and natural gas - mining support service activities, other mining and quarrying.

II. Rates of change of the average index of the period January - October 2022 compared with the corresponding index of the period January - October 2021 (Table 2)

The 3.0% increase of the working day adjusted average Overall IPI in the 10-month period January - October 2022, compared with the corresponding index in January - October 2021, is due to the corresponding rates of change of the sub-indices in the following industrial sections:

1. Increase of:

- 4.6% in the Manufacturing Index.

2. Decrease of:

- 0.7% in the Electricity Supply Index.
- 2.0% in the Water Supply Index.
- 6.3% in the Mining and Quarrying Index.

III. Monthly changes: October 2022 / September 2022 (Table 4)

The 0.6% increase of the seasonally adjusted Overall IPI in October 2022, compared with the corresponding index in September 2022 is due to the monthly changes of the sub-indices in the following industrial sections:

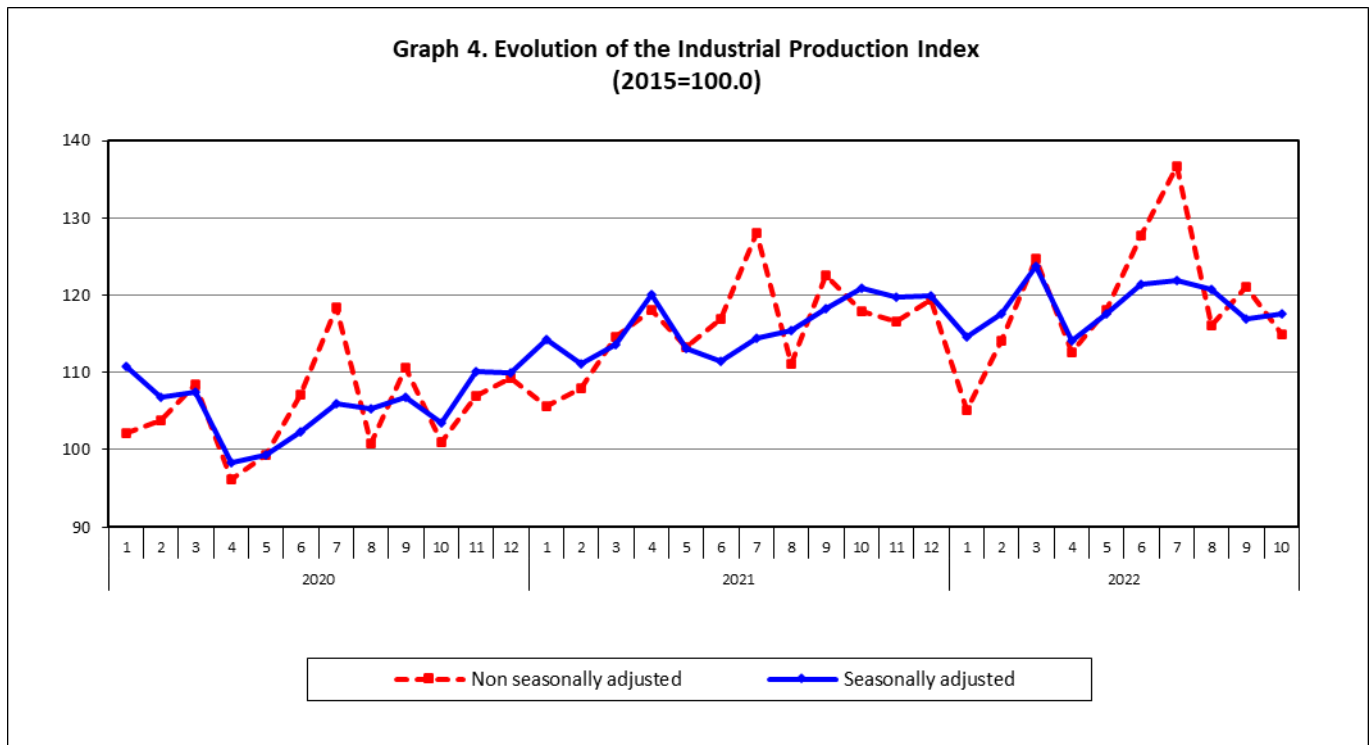
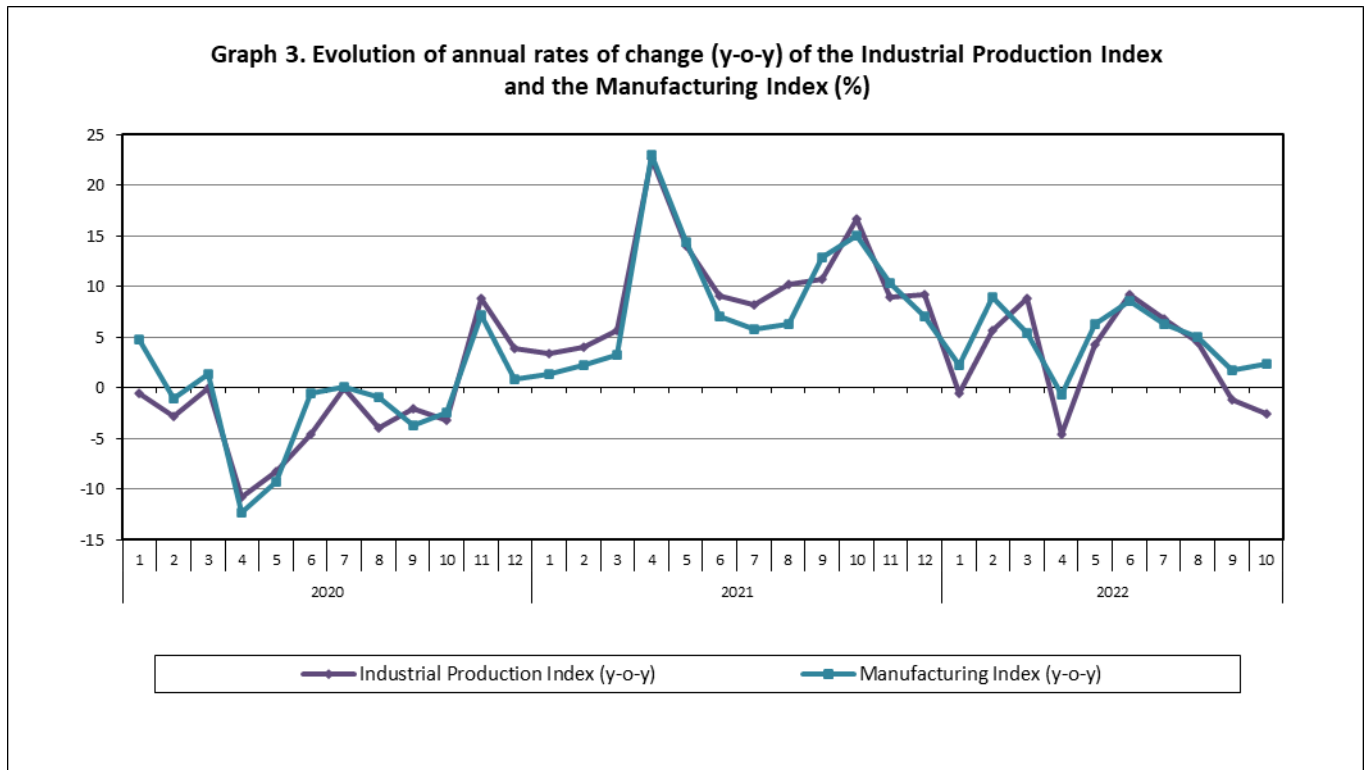
1. Increase of:

- 4.0% in the Water Supply Index.
- 1.6% in the Manufacturing Index.
- 0.2% in the Mining and Quarrying Index.

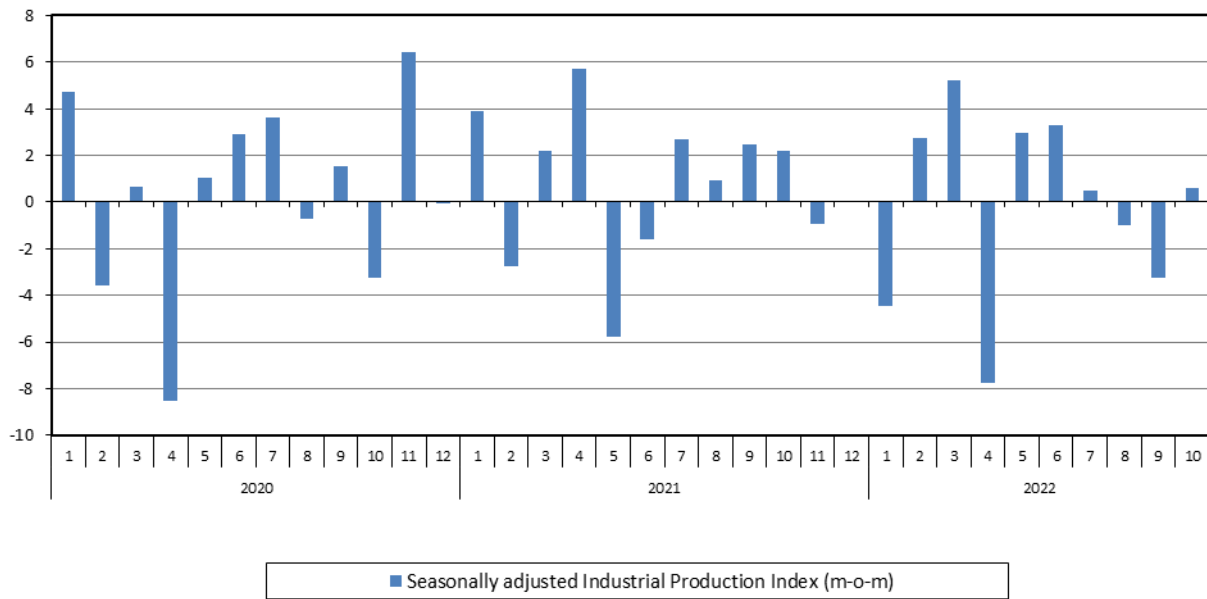
2. Decrease of:

- 4.9% in the Electricity Supply Index.

The following graphs depict the annual rates of change (y-o-y) of the Industrial Production Index and the Manufacturing Index, the evolution of the seasonally and non-seasonally adjusted Overall Industrial Production Index, as well as the monthly rates of change (m-o-m) of the seasonally adjusted index.



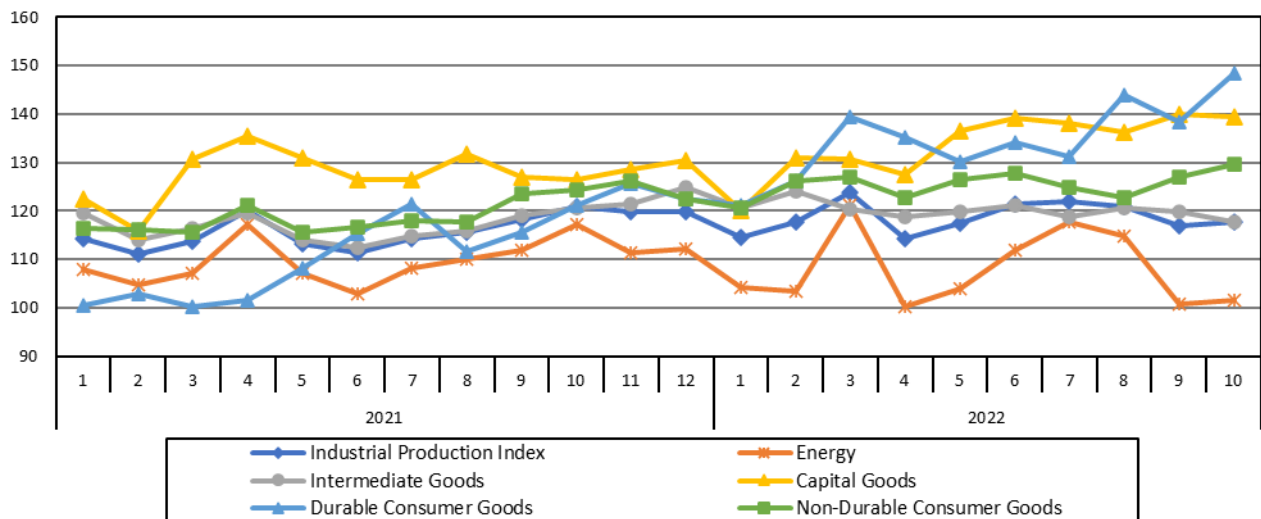
Graph 5. Evolution of the monthly rates of change (m-o-m) of the seasonally adjusted Industrial Production Index (%)



It should be noted that the time series with the seasonally adjusted indices is recalculated every time a new observation is added in the time series. Therefore, the seasonally adjusted data differ from the data published in the previous Press Release.

The following graphs depict the evolution of the seasonally adjusted Industrial Production Index and the Main Industrial Groupings, as well as the evolution of the Industrial Production Index and the Industrial Sections Indices.

Graph 6. Evolution of the seasonally adjusted Industrial Production Index and the Main Industrial Groupings Indices, January 2021 - October 2022 (2015=100.0)



Graph 7. Evolution of the Industrial Production Index and the Industrial Section Indices (2015=100.0)

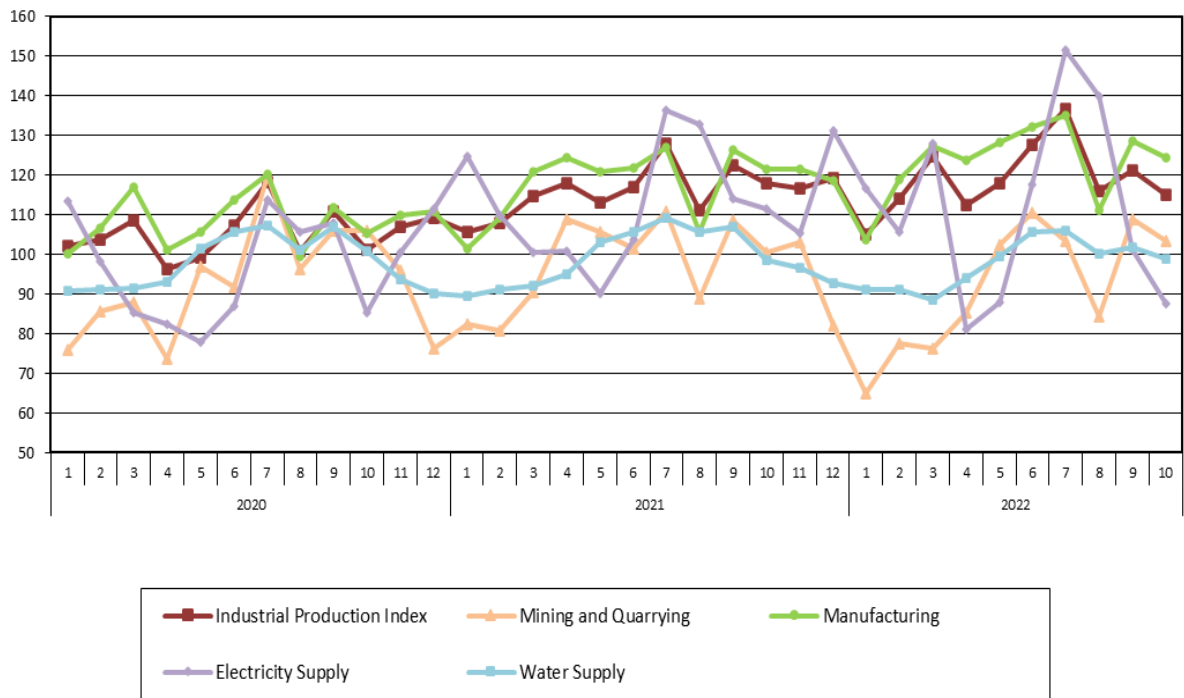


Table 1. Annual rates of change of the Industrial Production Index*(Working day adjusted data, according to the real number of working days)***Base year: 2015=100.0**

Code	Division	October			Rate of change (%)	
		2022*	2021	2020	2022/2021	2021/2020
OVERALL INDEX		115.01	117.96	101.05	-2.5	16.7
B	MINING AND QUARRYING	103.38	100.52	106.13	2.8	-5.3
05-06-09	Mining of coal and lignite – Extraction of crude petroleum and natural gas – Mining support service activities	40.00	25.22	36.43	58.6	-30.8
07	Mining of metal ores	117.99	119.92	151.47	-1.6	-20.8
08	Other mining and quarrying	107.67	104.92	100.77	2.6	4.1
C	MANUFACTURING	124.28	121.38	105.47	2.4	15.1
10	Food	105.68	103.55	91.62	2.1	13.0
11	Beverages	89.14	84.82	78.28	5.1	8.4
12	Tobacco products	101.21	106.81	121.77	-5.2	-12.3
13	Textiles	111.27	123.90	127.29	-10.2	-2.7
14	Wearing apparel	86.13	94.31	74.43	-8.7	26.7
15	Leather and related products	110.32	75.66	67.16	45.8	12.6
16	Wood and products of wood and cork, except furniture	107.97	97.11	93.88	11.2	3.4
17	Paper and paper products	120.37	113.89	106.20	5.7	7.2
18	Printing and reproduction of recorded products	123.04	133.68	101.62	-8.0	31.5
19	Coke and refined petroleum products	108.07	110.28	72.09	-2.0	53.0
20	Chemicals and chemical products	124.05	132.16	119.85	-6.1	10.3
21	Basic pharmaceutical products and pharmaceutical preparations	272.69	237.53	202.70	14.8	17.2
22	Rubber and plastic products	123.96	133.55	113.75	-7.2	17.4
23	Other non-metallic mineral products	130.44	123.83	117.48	5.3	5.4
24	Basic metals	123.92	131.89	134.84	-6.0	-2.2
25	Fabricated metal products, except machinery and equipment	137.49	144.61	134.19	-4.9	7.8
26	Computers, electronic and optical products	251.77	189.90	147.96	32.6	28.4
27	Electrical equipment	134.38	119.79	116.31	12.2	3.0
28	Machinery and equipment n. e. c.	125.28	124.46	107.22	0.7	16.1
29	Motor vehicles, trailers and semi-trailers	213.34	124.79	108.77	71.0	14.7
30	Other transport equipment	71.75	101.33	72.51	-29.2	39.7
31	Furniture	155.81	135.95	122.00	14.6	11.4
32	Other manufacturing	142.88	120.38	103.82	18.7	15.9
33	Repair and installation of machinery and equipment	103.79	72.63	79.96	42.9	-9.2
D	ELECTRICITY SUPPLY	87.46	111.58	85.46	-21.6	30.6
35	Electricity supply	87.46	111.58	85.46	-21.6	30.6
E	WATER SUPPLY	98.88	98.53	100.67	0.4	-2.1
36	Water collection, treatment and supply	98.88	98.53	100.67	0.4	-2.1
MAIN INDUSTRIAL GROUPINGS						
1	Energy	95.09	109.68	82.69	-13.3	32.6
2	Intermediate goods	121.19	124.40	115.64	-2.6	7.6
3	Capital goods	139.88	126.77	119.76	10.3	5.9
4	Consumer Durables	155.60	125.55	101.60	23.9	23.6
5	Consumer Non-Durables	125.65	120.25	106.97	4.5	12.4

* Provisional data

Note: The indices are rounded up to two decimal digits when published and percentage changes up to one decimal digit when published.

Table 2. Average indices of the period January – October and rates of change (%) of the Industrial Production Index
(Working day adjusted data, according to the real number of working days)

		Base year: 2015=100.0				
Code	Division	Average indices of the period Jan.-Oct.			Rate of change (%)	
		2022*	2021	2020	2022/2021	2021/2020
OVERALL INDEX		119.13	115.61	104.81	3.0	10.3
B	MINING AND QUARRYING	91.76	97.90	93.99	-6.3	4.2
05-06-09	Mining of coal and lignite – Extraction of crude petroleum and natural gas – Mining support service activities	24.52	20.75	18.84	18.2	10.1
07	Mining of metal ores	120.66	126.44	146.69	-4.6	-13.8
08	Other mining and quarrying	91.69	99.42	86.90	-7.8	14.4
C	MANUFACTURING	123.32	117.92	108.13	4.6	9.0
10	Food	111.76	107.03	103.56	4.4	3.4
11	Beverages	109.77	107.01	91.56	2.6	16.9
12	Tobacco products	118.51	119.68	111.31	-1.0	7.5
13	Textiles	112.29	114.38	104.61	-1.8	9.3
14	Wearing apparel	81.62	72.69	62.56	12.3	16.2
15	Leather and related products	84.09	76.04	64.40	10.6	18.1
16	Wood and products of wood and cork, except furniture	110.32	95.80	94.90	15.2	0.95
17	Paper and paper products	118.43	113.77	108.76	4.1	4.61
18	Printing and reproduction of recorded products	134.42	109.48	101.35	22.8	8.0
19	Coke and refined petroleum products	105.62	106.84	98.69	-1.1	8.3
20	Chemicals and chemical products	127.30	130.95	126.30	-2.8	3.7
21	Basic pharmaceutical products and pharmaceutical preparations	226.12	205.51	179.85	10.0	14.3
22	Rubber and plastic products	128.29	123.84	115.32	3.6	7.4
23	Other non-metallic mineral products	123.14	119.19	102.34	3.3	16.5
24	Basic metals	129.39	123.95	120.90	4.4	2.5
25	Fabricated metal products, except machinery and equipment	137.89	139.78	120.60	-1.3	15.9
26	Computers, electronic and optical products	216.88	181.59	145.72	19.4	24.6
27	Electrical equipment	138.97	116.80	95.06	19.0	22.9
28	Machinery and equipment n. e. c.	120.89	109.52	94.88	10.4	15.4
29	Motor vehicles, trailers and semi-trailers	151.86	105.71	99.23	43.7	6.5
30	Other transport equipment	71.41	71.16	57.16	0.4	24.5
31	Furniture	145.41	122.20	110.24	19.0	10.8
32	Other manufacturing	128.92	120.44	95.43	7.0	26.2
33	Repair and installation of machinery and equipment	92.99	80.72	83.58	15.2	-3.4
D	ELECTRICITY SUPPLY	111.65	112.49	95.72	-0.7	17.5
35	Electricity supply	111.65	112.49	95.72	-0.7	17.5
E	WATER SUPPLY	97.69	99.66	99.00	-2.0	0.7
36	Water collection, treatment and supply	97.69	99.66	99.00	-2.0	0.7
MAIN INDUSTRIAL GROUPINGS						
1	Energy	108.16	109.19	96.79	-0.9	12.8
2	Intermediate goods	121.42	117.80	108.93	3.1	8.1
3	Capital goods	128.20	121.76	106.43	5.3	14.4
4	Consumer Durables	133.76	109.47	95.06	22.2	15.2
5	Consumer Non-Durables	127.48	120.35	111.36	5.9	8.1

* Provisional data

Note: The indices are rounded up to two decimal digits when published and percentage changes up to one decimal digit when published.

Table 3. Monthly rate of change of the Industrial Production Index*(Working day adjusted data, according to the real number of working days)***Base year: 2015=100.0**

Code	Division	October 2022*	September 2022**	Rate of change (%) Oct. 2022 / Sep. 2022
OVERALL INDEX		115.01	121.17	-5.1
B	MINING AND QUARRYING	103.38	108.76	-4.9
05-06-09	Mining of coal and lignite – Extraction of crude petroleum and natural gas – Mining support service activities	40.00	33.90	18.0
07	Mining of metal ores	117.99	138.52	-14.8
08	Other mining and quarrying	107.67	109.52	-1.7
C	MANUFACTURING	124.28	128.47	-3.3
10	Food	105.68	123.85	-14.7
11	Beverages	89.14	116.03	-23.2
12	Tobacco products	101.21	128.73	-21.4
13	Textiles	111.27	125.48	-11.3
14	Wearing apparel	86.13	95.03	-9.4
15	Leather and related products	110.32	95.65	15.3
16	Wood and products of wood and cork, except furniture	107.97	134.14	-19.5
17	Paper and paper products	120.37	121.77	-1.1
18	Printing and reproduction of recorded products	123.04	132.44	-7.1
19	Coke and refined petroleum products	108.07	102.68	5.2
20	Chemicals and chemical products	124.05	143.05	-13.3
21	Basic pharmaceutical products and pharmaceutical preparations	272.69	205.07	33.0
22	Rubber and plastic products	123.96	125.46	-1.2
23	Other non-metallic mineral products	130.44	122.11	6.8
24	Basic metals	123.92	131.13	-5.5
25	Fabricated metal products, except machinery and equipment	137.49	152.62	-9.9
26	Computers, electronic and optical products	251.77	270.27	-6.8
27	Electrical equipment	134.38	138.13	-2.7
28	Machinery and equipment n. e. c.	125.28	117.02	7.1
29	Motor vehicles, trailers and semi-trailers	213.34	131.48	62.3
30	Other transport equipment	71.75	77.05	-6.9
31	Furniture	155.81	151.26	3.0
32	Other manufacturing	142.88	136.57	4.6
33	Repair and installation of machinery and equipment	103.79	102.36	1.4
D	ELECTRICITY SUPPLY	87.46	101.01	-13.4
35	Electricity supply	87.46	101.01	-13.4
E	WATER SUPPLY	98.88	101.75	-2.8
36	Water collection, treatment and supply	98.88	101.75	-2.8
MAIN INDUSTRIAL GROUPINGS				
1	Energy	95.09	101.48	-6.3
2	Intermediate goods	121.19	126.61	-4.3
3	Capital goods	139.88	140.15	-0.2
4	Consumer Durables	155.60	142.66	9.1
5	Consumer Non-Durables	125.65	134.66	-6.7

* Provisional data ** Revised data

Note: The indices are rounded up to two decimal digits when published and percentage changes up to one decimal digit when published.

Table 4. Monthly rate of change of the seasonally adjusted Industrial Production Index

Base year: 2015=100.0

Code	Division	October 2022	September 2022	Rate of change (%) Oct. 2022 /Sept. 2022
OVERALL INDEX		117.59	116.91	0.6
B	MINING AND QUARRYING	92.65	92.43	0.2
05-06-09	Mining of coal and lignite – Extraction of crude petroleum and natural gas – Mining support service activities	-	-	-
07	Mining of metal ores	110.43	126.90	-13.0
08	Other mining and quarrying	93.97	90.29	4.1
C	MANUFACTURING	125.89	123.88	1.6
10	Food	112.00	111.92	0.1
11	Beverages	106.56	101.47	5.0
12	Tobacco products	98.19	118.60	-17.2
13	Textiles	110.10	117.85	-6.6
14	Wearing apparel	77.16	82.17	-6.1
15	Leather and related products	98.14	86.26	13.8
16	Wood and products of wood and cork, except furniture	113.55	122.80	-7.5
17	Paper and paper products	123.76	115.72	6.9
18	Printing and reproduction of recorded products	122.04	135.32	-9.8
19	Coke and refined petroleum products	110.90	101.02	9.8
20	Chemicals and chemical products	124.18	130.37	-4.7
21	Basic pharmaceutical products and pharmaceutical preparations	255.37	220.71	15.7
22	Rubber and plastic products	121.66	123.45	-1.5
23	Other non-metallic mineral products	121.17	116.01	4.5
24	Basic metals	120.13	126.08	-4.7
25	Fabricated metal products, except machinery and equipment	136.44	145.12	-6.0
26	Computers, electronic and optical products	252.73	272.10	-7.1
27	Electrical equipment	139.47	142.59	-2.2
28	Machinery and equipment n. e. c.	124.38	126.33	-1.5
29	Motor vehicles, trailers and semi-trailers	223.45	149.06	49.9
30	Other transport equipment	66.62	79.46	-16.2
31	Furniture	155.09	147.89	4.9
32	Other manufacturing	143.04	136.04	5.1
33	Repair and installation of machinery and equipment	113.78	102.71	10.8
D	ELECTRICITY SUPPLY	95.36	100.26	-4.9
35	Electricity supply	95.36	100.26	-4.9
E	WATER SUPPLY	97.58	93.82	4.0
36	Water collection, treatment and supply	97.58	93.82	4.0
MAIN INDUSTRIAL GROUPINGS				
1	Energy	101.60	100.79	0.8
2	Intermediate goods	117.69	119.89	-1.8
3	Capital goods	139.39	140.01	-0.4
4	Consumer Durables	148.37	138.49	7.1
5	Consumer Non-Durables	129.52	126.88	2.1

Notes:

1. The indices are rounded up to two decimal digits when published and percentage changes up to one decimal digit when published.
2. The whole time-series with seasonally adjusted indices is recalculated every time a new observation is added in the time-series.
3. The composed index of divisions 05-06-09 is not seasonally adjusted.

Table 5. Evolution of the Overall Industrial Production Index*(Working day adjusted data. according to the real number of working days)***Base year: 2015=100.0**

Year and month	Overall Index	Monthly rate of change (%)	Annual rate of change (%)	12-month average index (moving average)	Rate of change of the 12-month average index (%)
2020: 1	102.17	-2.9	-0.6	107.52	-1.0
2	103.80	1.6	-2.9	107.26	-1.4
3	108.53	4.6	0.03	107.27	-1.3
4	96.26	-11.3	-10.8	106.30	-2.4
5	99.25	3.1	-8.2	105.56	-3.1
6	107.19	8.0	-4.6	105.13	-3.4
7	118.36	10.4	-0.1	105.12	-3.3
8	100.78	-14.8	-3.9	104.78	-3.6
9	110.70	9.8	-2.1	104.58	-3.9
10	101.05	-8.7	-3.2	104.30	-4.1
11	107.02	5.9	8.9	105.03	-2.7
12	109.29	2.1	3.8	105.37	-2.0
Annual average	105.37				
2021: 1	105.66	-3.3	3.4	105.66	-1.7
2	107.96	2.2	4.0	106.00	-1.2
3	114.62	6.2	5.6	106.51	-0.7
4	118.04	3.0	22.6	108.33	1.9
5	113.24	-4.1	14.1	109.49	3.7
6	116.88	3.2	9.0	110.30	4.9
7	128.03	9.5	8.2	111.11	5.7
8	111.09	-13.2	10.2	111.97	6.9
9	122.60	10.4	10.7	112.96	8.0
10	117.96	-3.8	16.7	114.36	9.6
11	116.61	-1.1	9.0	115.14	9.6
12	119.36	2.4	9.2	116.00	10.1
Annual average	116.00				
2022*: 1	105.13	-11.9	-0.5	115.96	9.7
2	114.06	8.5	5.7	116.47	9.9
3	124.69	9.3	8.8	117.31	10.1
4	112.60	-9.7	-4.6	116.85	7.9
5	118.06	4.9	4.3	117.26	7.1
6	127.67	8.1	9.2	118.15	7.1
7	136.76	7.1	6.8	118.88	7.0
8	116.16	-15.1	4.6	119.30	6.6
9	121.17	4.3	-1.2	119.19	5.5
10	115.01	-5.1	-2.5	118.94	4.0

* Provisional data

Note: The indices are rounded up to two decimal digits when published and percentage changes up to one decimal digit when published.

Table 6. Monthly evolution of the seasonally adjusted Overall Industrial Production Index and Main Industrial Groupings

Base year: 2015=100.0

Year and month	Overall Index		Energy		Intermediate goods		Capital goods		Consumer durables		Consumer non-durables	
	Index	Monthly rate of change (%)	Index	Monthly rate of change (%)	Index	Monthly rate of change (%)	Index	Monthly rate of change (%)	Index	Monthly rate of change (%)	Index	Monthly rate of change (%)
2020:												
1	110.77	4.8	101.05	6.8	114.23	5.5	124.22	6.3	122.20	12.0	115.71	1.5
2	106.82	-3.6	96.56	-4.4	111.51	-2.4	117.85	-5.1	112.92	-7.6	112.34	-2.9
3	107.53	0.7	99.08	2.6	112.40	0.8	109.25	-7.3	96.26	-14.8	114.09	1.6
4	98.37	-8.5	102.27	3.2	89.36	-20.5	101.27	-7.3	53.42	-44.5	102.16	-10.5
5	99.41	1.1	97.33	-4.8	99.42	11.3	99.69	-1.6	69.41	29.9	103.36	1.2
6	102.32	2.9	95.39	-2.0	104.61	5.2	107.22	7.5	97.25	40.1	107.88	4.4
7	106.01	3.6	98.09	2.8	111.12	6.2	118.71	10.7	116.57	19.9	107.73	-0.1
8	105.25	-0.7	93.42	-4.8	114.50	3.0	109.81	-7.5	106.71	-8.5	111.07	3.1
9	106.88	1.6	97.88	4.8	111.16	-2.9	114.26	4.1	104.88	-1.7	112.59	1.4
10	103.44	-3.2	88.19	-9.9	112.18	0.9	118.95	4.1	99.93	-4.7	111.17	-1.3
11	110.08	6.4	102.80	16.6	116.47	3.8	118.97	0.0	97.52	-2.4	112.20	0.9
12	110.01	-0.06	103.70	0.9	115.81	-0.6	113.94	-4.2	97.88	0.4	112.71	0.5
Annual average	105.57		97.98		109.40		112.85		97.91		110.25	
2021:												
1	114.32	3.9	108.03	4.2	119.50	3.2	122.36	7.4	100.43	2.6	116.49	3.4
2	111.16	-2.8	104.65	-3.1	113.89	-4.7	115.76	-5.4	102.82	2.4	116.12	-0.3
3	113.61	2.2	107.07	2.3	116.39	2.2	130.59	12.8	100.23	-2.5	115.58	-0.5
4	120.13	5.7	117.14	9.4	119.45	2.6	135.36	3.7	101.68	1.5	121.19	4.9
5	113.18	-5.8	107.09	-8.6	114.00	-4.6	130.93	-3.3	108.17	6.4	115.50	-4.7
6	111.40	-1.6	102.94	-3.9	112.53	-1.3	126.52	-3.4	115.20	6.5	116.59	0.9
7	114.40	2.7	108.28	5.2	114.73	2.0	126.53	0.0	121.40	5.4	117.98	1.2
8	115.49	1.0	110.07	1.6	115.98	1.1	131.65	4.1	111.76	-7.9	117.58	-0.3
9	118.35	2.5	111.84	1.6	118.94	2.6	127.09	-3.5	115.56	3.4	123.59	5.1
10	120.93	2.2	117.07	4.7	120.73	1.5	126.39	-0.6	121.08	4.8	124.30	0.6
11	119.81	-0.9	111.34	-4.9	121.52	0.6	128.64	1.8	125.78	3.9	126.07	1.4
12	119.90	0.1	112.26	0.8	124.77	2.7	130.42	1.4	122.51	-2.6	122.44	-2.9
Annual average	116.06		109.82		117.70		127.69		112.22		119.45	
2022:												
1	114.54	-4.5	104.11	-7.3	120.68	-3.3	120.01	-8.0	121.12	-1.1	120.59	-1.5
2	117.66	2.7	103.38	-0.7	123.98	2.7	130.97	9.1	126.26	4.2	126.06	4.5
3	123.78	5.2	121.19	17.2	120.31	-3.0	130.64	-0.2	139.36	10.4	127.01	0.8
4	114.17	-7.8	100.34	-17.2	118.73	-1.3	127.50	-2.4	135.20	-3.0	122.75	-3.4
5	117.56	3.0	104.00	3.7	119.92	1.0	136.41	7.0	130.12	-3.8	126.52	3.1
6	121.41	3.3	111.88	7.6	121.17	1.0	139.16	2.0	134.24	3.2	127.78	1.0
7	122.00	0.5	117.69	5.2	118.86	-1.9	138.05	-0.8	131.21	-2.3	124.95	-2.2
8	120.79	-1.0	114.87	-2.4	120.63	1.5	136.12	-1.4	143.86	9.6	122.87	-1.7
9	116.91	-3.2	100.79	-12.3	119.89	-0.6	140.01	2.9	138.49	-3.7	126.88	3.3
10	117.59	0.6	101.60	0.8	117.69	-1.8	139.39	-0.4	148.37	7.1	129.52	2.1

Notes:

1. The indices are rounded up to two decimal digits when published and percentage changes up to one decimal digit when published.
2. The whole time-series with seasonally adjusted indices is recalculated every time a new observation is added in the time-series.

METHODOLOGICAL NOTES

Generally	The Industrial Production Index (IPI) in Greece has been compiled by the Hellenic Statistical Authority (ELSTAT) from 1959 onwards.
Purpose of the index	The objective of the index is to compare the magnitude (volume) of the output in the current month in the mining and quarrying, manufacturing, electricity and water supply divisions with the corresponding output of a given fixed period, which is considered as base period. The Industrial Production Index shows the evolution of the value added of the production factors cost, at constant prices.
Legal framework	The compilation of the IPI is based on the framework of the implementation of Council Regulation (EC) No 1165/1998 concerning short-term statistics (STS-R). Furthermore, the IPI is governed by Regulation (EC) No 1893/2006 of the European Parliament and of the Council, by Commission Regulation (EC) No 656/2007, by Council Regulation (EC) No 451/2008, by Regulation (EU) No 2019/2152 of the European Parliament and of the Council on European business statistics, as well as Commission Implementing Regulation (EU) No 2020/1197 laying down technical specifications and arrangements pursuant to Regulation (EU) No 2019/2152.
Reference period	Month.
Base year	2015=100.0.
Revision	The IPI is a fixed base index. The Industrial Production Index was currently revised with new base year 2015 (2015=100.0) according to the provisions of Council Regulation No 1165/1998 concerning short-term statistics. Short-term indices are revised every five (5) years, particularly in calendar years ending in 0 or 5.
Statistical classifications	At the level of branches of economic activities, the statistical classification of economic activities NACE Rev.2 of EU was used (Regulation No 1893/2006), while at the level of main industrial groupings, the allocation of two-digit and three-digit NACE Rev. 2 headings to categories of aggregate classification was used, in accordance with Council Regulation No 656/2007. At product level, the statistical classification CPA 2008 of EU was used, according to Council Regulation No 451/2008.
Geographical coverage	The index covers the whole Country.
Coverage of economic activities	The index covers all the sections of industry, the main industrial groups, as well as all levels of economic activity.
Statistical survey	The data are collected from a sample of 1,263 enterprises. The survey covers 325 products and the measurement of the surveyed products is made in terms of output quantities or in terms of production value or turnover, according to the specific features in each branch of economic activity.
Seasonal adjustment	Seasonal adjustment is the procedure followed to remove the impact of seasonality on the time-series (i.e. the impact of monthly effects, e.g. holidays, tourist period etc.), in order to improve comparability over time. The method applied is TRAMO-SEATS with the use of JDemetra+ 2.0.0. For the seasonal adjustment of the Industrial Production Index at 2-digit level of NACE Rev.2, at section level (B – Mining and Quarrying, C – Manufacturing, D – Electricity and E – Water Supply) and for the Main Industrial Groupings (MIGs), the direct approach is applied, namely each time-series is seasonally adjusted independently. For the overall Industrial Production Index, the indirect approach is applied, with the seasonally adjusted IPI being computed by aggregating the seasonally adjusted MIGs using appropriate weights.
Publication of data	The revised IPI with the new base year 2015 (2015=100.0) is released since July 2019, with May 2019 as the first reference month. Data with base year 2015=100.0 are available from January 2000 onwards.
References	More information about the methodology concerning the compilation and calculation of the index and the time series are available on the website of the Hellenic Statistical Authority (ELSTAT) (http://www.statistics.gr/en/statistics/-/publication/DKT21/-).