



## PRESS RELEASE

### ARRIVALS AND NIGHTS SPENT IN HOTELS, SIMILAR ESTABLISHMENTS AND TOURIST CAMPSITES: JANUARY – SEPTEMBER 2021 (provisional data)

According to the provisional results of the Survey on Arrivals and Nights Spent in Hotels, Similar Establishments and Tourist Campsites, conducted by the Hellenic Statistical Authority (ELSTAT), for the total of these establishments, an increase of 63.2% is recorded in arrivals (Table 1) and an 87.0% increase in nights spent (Table 2), for the period of January – September 2021 compared with the corresponding period of 2020.

More specifically, during the period of January-September 2021, arrivals and nights spent by non-residents recorded an increase of 111.9% in arrivals and 119.3% in nights spent and by residents an increase of 5.9% and 15.8%, respectively, compared with the same period of 2020 (Tables 1 and 2, Graphs 3 and 4).

During the period January – September 2021, the largest share of arrivals and nights spent in hotels, similar establishments and tourist campsites, was recorded by non-residents, i.e. 70.2% of arrivals and 80.6% of nights spent (Graph 5).

For the same period, the average number of nights spent per person amounted to 4.2 nights. More specifically, the average number of nights spent was 4.8 nights for non-residents and 2.7 nights for residents (Graph 6).

The total occupancy of the bed places in hotels and similar establishments (excluding tourist campsites), which is based on the nights spent compared to the bed places that were in operation, amounted to 44.1% during the period of January – September 2021, compared with 31.9% in the corresponding period of 2020 (Table 3, Graph 7).

**Information on methodological issues:**

Sectoral Statistics Division  
Tourism and Cultural Statistics Section  
Head of the Section: Asimina Katri  
Tel: +30 213 135 2168  
e-mail: [a.katri@statistics.gr](mailto:a.katri@statistics.gr)

**Information for data provision:**

Tel. +30 213 135 2022, 2308, 2310  
e-mail: [data.dissem@statistics.gr](mailto:data.dissem@statistics.gr)

**Table1. Arrivals of residents and non-residents at hotels, similar establishments and tourist campsites, by month, January – September 2020 and 2021<sup>(1)</sup>**

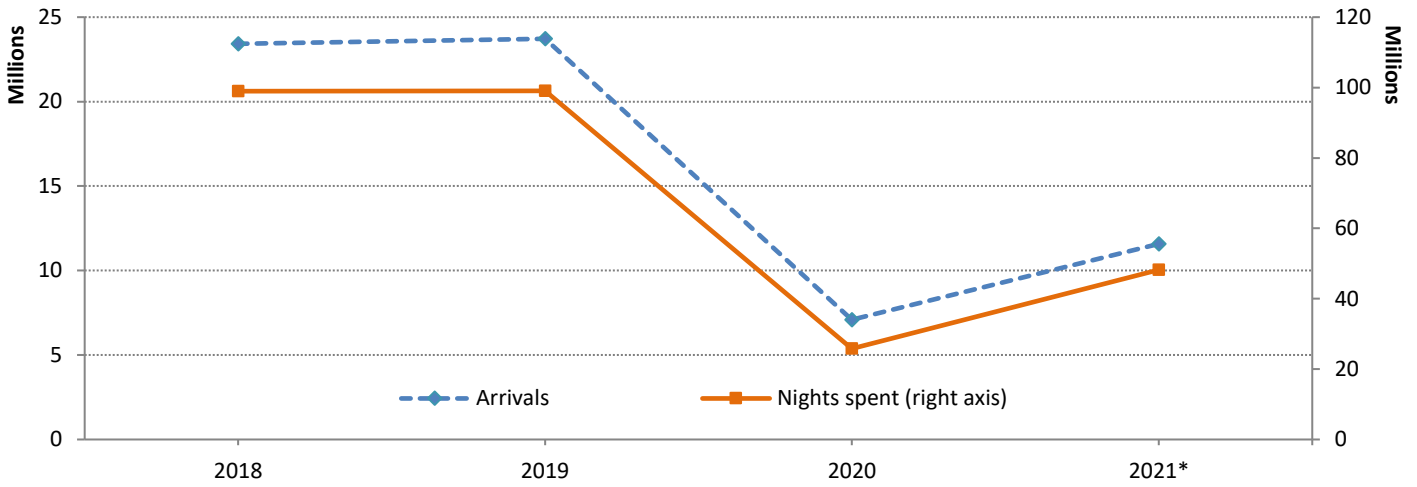
	2020			2021 <sup>(1)</sup>			Change % 2021/2020		
	Hotels and similar establishments and tourist campsites			Hotels and similar establishments and tourist campsites			Total establishments		
Month	Total	Residents	Non-residents	Total	Residents	Non-residents	Total	Residents	Non-residents
<b>Jan- Sept</b>	<b>7,089,274</b>	<b>3,253,243</b>	<b>3,836,031</b>	<b>11,572,230</b>	<b>3,444,454</b>	<b>8,127,776</b>	<b>63.2</b>	<b>5.9</b>	<b>111.9</b>
January	740,298	473,695	266,603	119,967	97,976	21,991	-83.8	-79.3	-91.8
February	791,553	499,163	292,390	142,529	118,037	24,492	-82	-76.4	-91.6
March	231,490	148,893	82,597	172,883	135,733	37,150	-25.3	-8.8	-55
April	15,797	12,198	3,599	150,972	113,487	37,485	855.7	830.4	941.5
May	32,419	27,698	4,721	462,621	187,815	274,806	1,327.00	578.1	5,720.90
June	308,783	255,187	53,596	1,398,883	456,013	942,870	353	78.7	1,659.20
July	1,374,393	608,056	766,337	2,992,941	818,045	2,174,896	117.8	34.5	183.8
August	2,162,163	833,780	1,328,383	3,447,506	962,044	2,485,462	59.4	15.4	87.1
September	1,432,378	394,573	1,037,805	2,683,928	555,304	2,128,624	87.4	40.7	105.1

**Table 1. Nights spent of residents and non-residents in hotels, similar establishments and tourist campsites, by month, January – September 2020 and 2021<sup>(1)</sup>**

	2020			2021 <sup>(1)</sup>			Change % 2021/2020		
	Hotels and similar establishments and tourist campsites			Hotels and similar establishments and tourist campsites			Total establishments		
Month	Total	Residents	Non-residents	Total	Residents	Non-residents	Total	Residents	Non-residents
<b>Jan- Sept</b>	<b>25,803,928</b>	<b>8,064,474</b>	<b>17,739,454</b>	<b>48,242,864</b>	<b>9,338,729</b>	<b>38,904,135</b>	<b>87.0</b>	<b>15.8</b>	<b>119.3</b>
January	1,491,552	901,324	590,228	299,987	215,045	84,942	-79.9	-76.1	-85.6
February	1,594,441	921,664	672,777	332,759	251,195	81,564	-79.1	-72.7	-87.9
March	590,958	357,415	233,543	395,818	283,328	112,490	-33.0	-20.7	-51.8
April	63,072	44,660	18,412	447,800	299,633	148,167	610.0	570.9	704.7
May	89,656	69,151	20,505	1,424,193	373,539	1,050,654	1,488.5	440.2	5,023.9
June	668,592	510,249	158,343	5,226,749	1,036,545	4,190,204	681.8	103.1	2,546.3
July	5,349,396	1,590,810	3,758,586	12,894,987	2,380,376	10,514,611	141.1	49.6	179.7
August	9,550,277	2,742,583	6,807,694	15,643,278	3,217,765	12,425,513	63.8	17.3	82.5
September	6,405,984	926,618	5,479,366	11,577,293	1,281,303	10,295,990	80.7	38.3	87.9

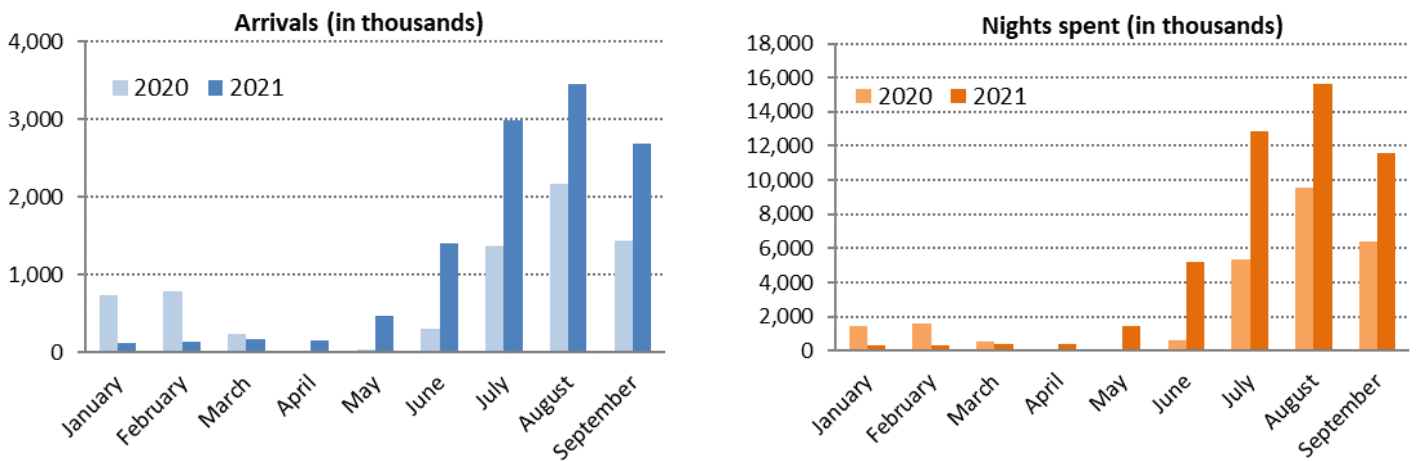
<sup>(1)</sup> Provisional data.

**Graph 1. Arrivals and nights spent in hotels, similar establishments and tourist campsites, January – September 2018 – 2021<sup>(1)</sup>**



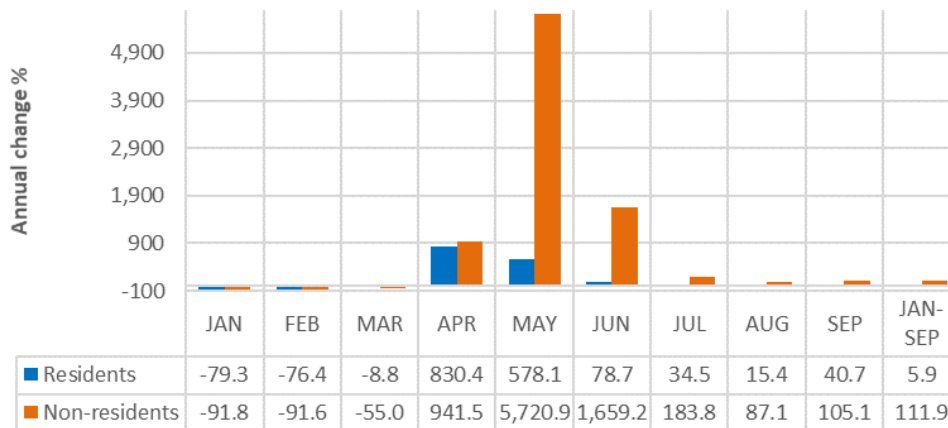
<sup>(1)</sup> Provisional data.

**Graph 2. Arrivals and nights spent in hotels, similar establishments and tourist campsites, by month, January – September 2020 and 2021<sup>(1)</sup>**



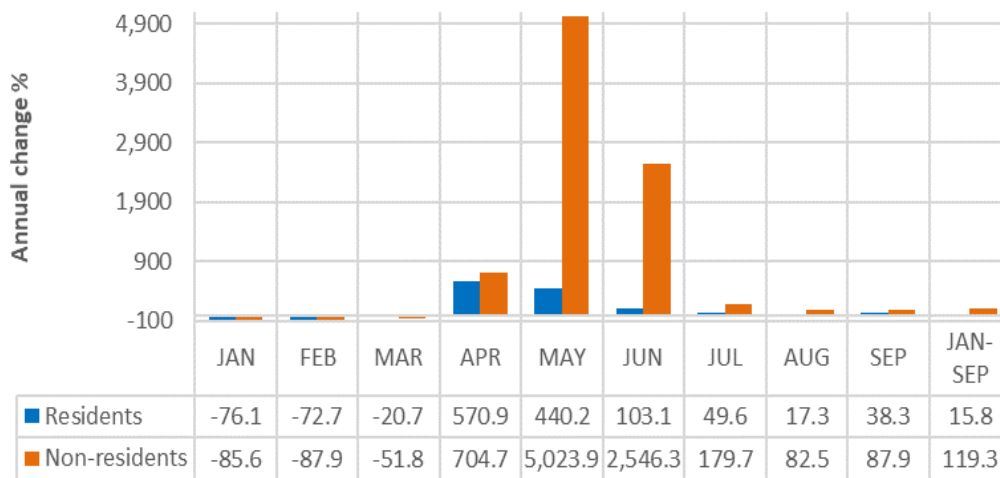
<sup>(1)</sup> Provisional data.

**Graph 3. Annual change 2021/2020 (%) of arrivals in hotels, similar establishments and tourist campsites, by month, January – September 2021<sup>(1)</sup>**



<sup>(1)</sup> Provisional data.

**Graph 4. Annual change 2021/2020 (%) of nights spent in hotels, similar establishments and tourist campsites, by month, January – September 2021<sup>(1)</sup>**



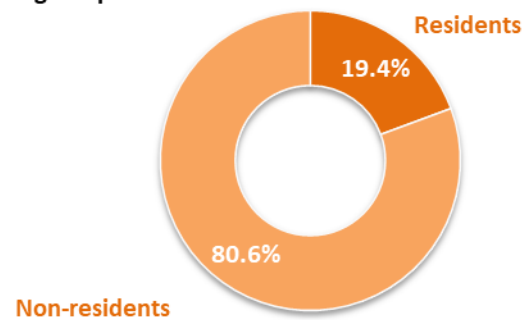
<sup>(1)</sup> Provisional data.

**Graph 5. Arrivals and nights spent by residents and non-residents in hotels, similar establishments and tourist campsites, January – September 2021<sup>(1)</sup>**

**Arrivals**

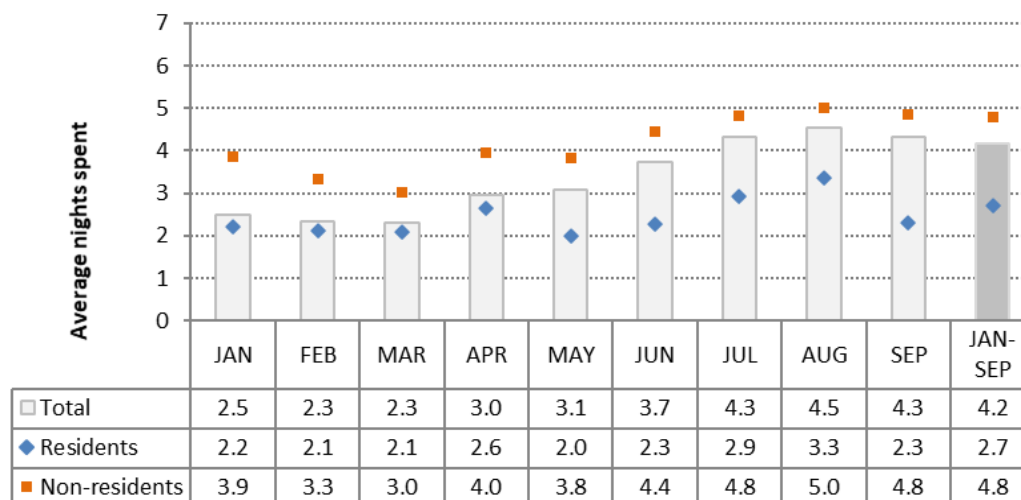


**Nights spent**



<sup>(1)</sup> Provisional data.

**Graph 6. Average nights spent per guest in hotels, similar establishments and tourist campsites, by month, January – September 2021<sup>(1)</sup>**

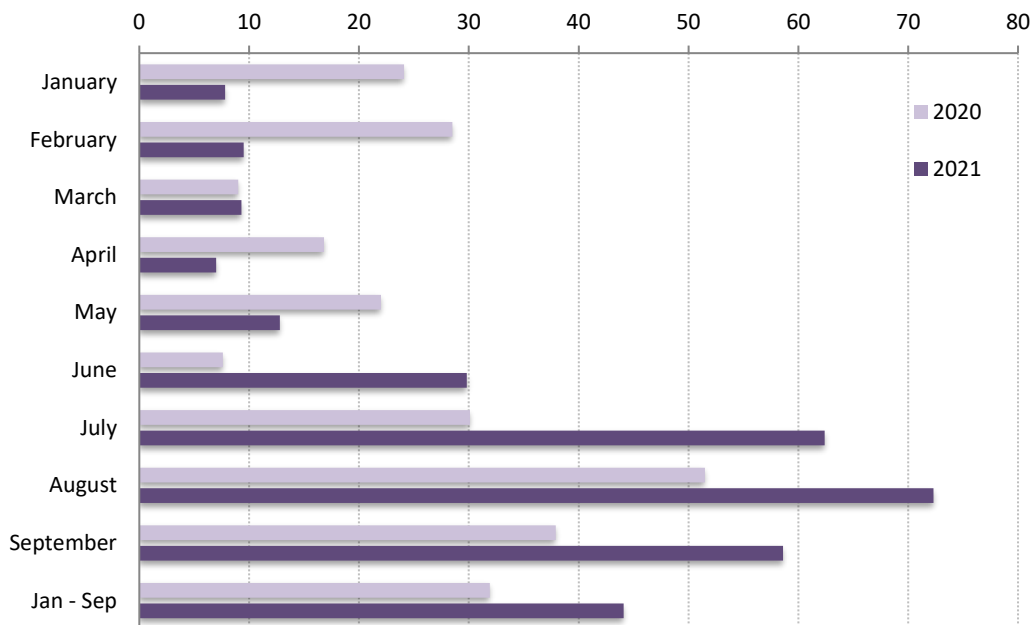


<sup>(1)</sup> Provisional data.

**Table 3. Occupancy (%) of bed-places in hotels and similar establishments, by month, January – September 2020 and 2021<sup>(1)(2)</sup>**

Month	2020	2021
<b>January - September</b>	<b>31.9</b>	<b>44.1</b>
January	24.1	7.8
February	28.5	9.5
March	9.0	9.3
April	16.8	7.0
May	22.0	12.8
June	7.6	29.8
July	30.1	62.4
August	51.5	72.3
September	37.9	58.6

**Graph 7. Occupancy (%) of bed-places in hotels and similar establishments, by month, January – September 2020 and 2021<sup>(1)(2)</sup>**



<sup>(1)</sup> Provisional data.

<sup>(2)</sup> The occupancy of bed-places refers to the bed-places that were in operation for each reference period.

## EXPLANATORY NOTES

<b>Arrivals and nights spent at hotels, similar establishments and tourist campsites</b>	Data on arrivals and nights spent at hotels, similar establishments and tourist campsites are collected from a monthly census survey. Each establishment fills in a questionnaire, for every month that it is in operation. It is mandatory for all hotels, similar establishments and tourist campsites to participate in the survey.
<b>Legal frame</b>	The survey is conducted pursuant to Regulation 692/2011 of the European Parliament and of the Council.
<b>Reference unit</b>	The information on the reference units (hotels, similar establishments and tourist campsites) is obtained from the Register of the Hellenic Chamber of Hotels. On the basis of this Register the relevant databases and registers of the Hellenic Statistical Authority (ELSTAT) are updated on a quarterly basis.
<b>Reference period</b>	The survey results refer to 100% of the total of the available bed-places.
<b>Data dissemination</b>	Final annual data are published in July of the following year. As regards the annual data there is a press release and detailed tables.
<b>Reference period</b>	January - September 2021.
<b>Definitions</b>	<p><u>Resident</u>: Every person, regardless of citizenship, that has resided in Greece for at least a year, or has arrived in Greece with the intention to reside in the country for at least 1 year.</p> <p><u>Non-resident</u>: Every person, regardless of citizenship, that is not considered to be resident.</p> <p><u>Arrivals</u>: The arrivals at the establishments are calculated for every person separately. The data refer to the total number of persons and not to the total number of rooms that were occupied. Only the persons that had at least one overnight stay at the establishment are counted.</p> <p><u>Nights spent</u>: The nights spent are calculated for every person separately. The data refer to the total number of nights spent by every person and not to the total number of nights spent in every room.</p> <p><u>Occupancy of bed-places</u>: The monthly occupancy of bed-places is calculated on the basis of the number of the bed-places, as reported by each establishment. The rate refers to the occupancy that was accomplished, as compared with the maximum occupancy that is expected according to the available bed-places.</p> <p>The occupancy of the period is the result of the average occupancy rates of every month of the period, weighted by the bed-places that were in operation for each month.</p>
<b>Methodology</b>	<p>This is a census survey and is conducted on a monthly basis. The data are compiled through the collection and processing of the relevant data submitted, via a specific questionnaire, by hotels, similar establishments and tourist campsites for each month of operation. The questionnaires are mostly submitted electronically, via ELSTAT's electronic application "Xenios Zeus" or, alternatively, for establishments that this is not possible, in paper form.</p> <p>The survey is based on the Statistical Register of hotels, similar establishments and tourist campsites, which is updated during the year, so that data refer to the actual number of accommodation establishments and campsites that are in operation.</p> <p>Non-response to the survey is addressed as follows:</p> <ol style="list-style-type: none"><li>1. Regular reminders are sent out to the establishments that have not responded to the survey, for submitting data.</li><li>2. For the percentage of establishments, which despite the reminders still have not responded to the survey, supplementary administrative data are used, and statistical methods are applied for grossing-up of the results to the total of establishments.</li></ol>
<b>Data collection during the pandemic period of coronavirus disease 2019 (COVID-19)</b>	<p>Since March 2020 special measures were taken for the operation of accommodation establishments. In specific, for the period of 15 March to 15 June 2020 the operation of tourist accommodation establishments that operate on a seasonal basis was suspended in the framework of the containment measures against the Covid-19 pandemic, whereas the operation of tourist accommodation establishments that operate on a continuous basis was suspended for the period from 23 March to 31 May 2020.</p> <p>For the compilation of the provisional data of arrivals and nights spent for the nine-month period of January - September 2021, as for the corresponding period of 2020, both data</p>

collected by the survey and administrative data sources were used. Specifically,  
a. the establishments of the Register of hotels and tourist campsites, were identified on the basis of administrative data for each reference period.

b. the survey was conducted on the afore-mentioned establishments

c. for the accommodation establishments that were in operation but did not respond to the survey, statistical methods were used for addressing non-response by grossing-up the collected data to the 100% of the total of the available bed-places.

It is noted that during this period only a few establishments were in operation for special purposes such as the accommodation of people in quarantine, public servants that were transferred for special reasons, etc. In such cases arrivals and nights spent were not recorded, as they are not in the scope of the survey (Regulation EU 692/2011).

**References** More information on the survey results on hotels, similar establishments and tourist campsites at a more detailed geographical level is available on the website of ELSTAT at: <http://www.statistics.gr/en/statistics/-/publication/STO12/->