



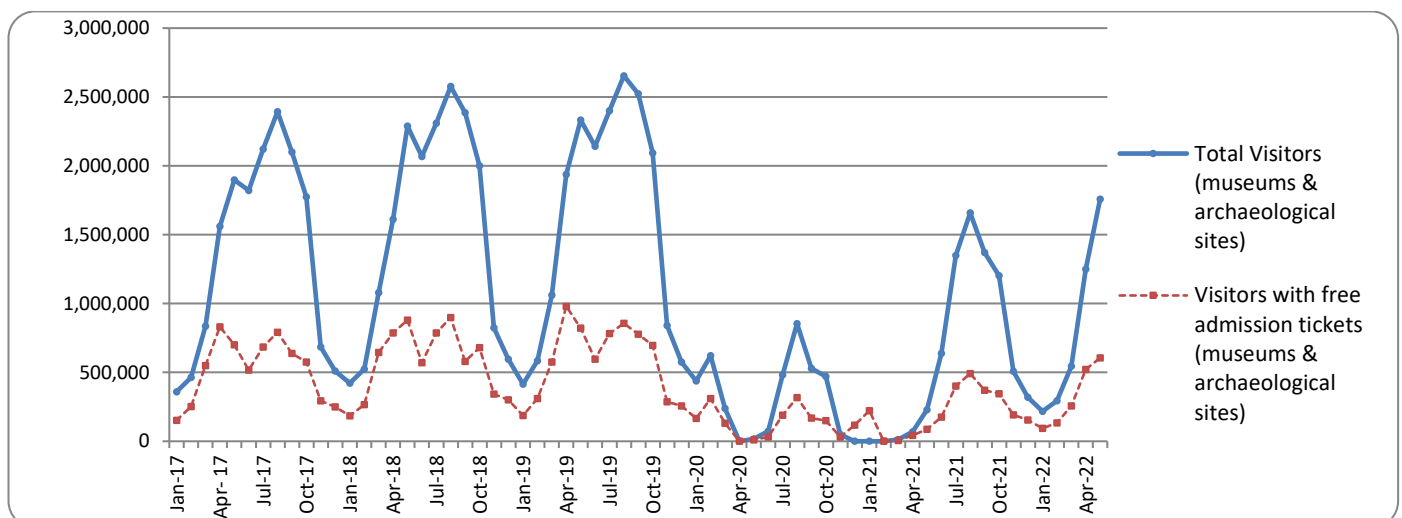
## PRESS RELEASE

### SURVEY ON MUSEUMS AND ARCHAEOLOGICAL SITES ATTENDANCE MAY 2022

The Hellenic Statistical Authority (ELSTAT) announces the results of the *Survey on Museums and Archaeological Sites Attendance* for May 2022. More specifically:

- During May 2022 compared with the corresponding period of May 2021, Museums recorded a 680.3% increase in the number of visitors and a 627.1% increase in the number of free admission visitors, as well as a 755.1% increase in their receipts, given the fact that they operated fully during May 2022, whereas during the same month of 2021, they operated from the 14<sup>th</sup> of May 2021, namely for eighteen (18) calendar days, in the framework of the preventative measures against the Covid-19 pandemic (Table 1).
- As regards Archaeological sites, in May 2022 compared with the corresponding month of 2021, an increase of 664.3% was recorded at the number of visitors, of 568.7% in the number of free admission visitors and of 746.2% in the corresponding receipts (Table 1).
- During the five month period from January to May 2022, compared to the corresponding period of 2021, an increase of 1922.8% was recorded in the number of visitors, of 1927.9% in the number of free admission visitors and of 1773.3% in the relevant receipts, given the fact that in the framework of the preventative measures against the Covid-19 pandemic, the operation of the museums was gradually suspended from November 1<sup>st</sup> 2020 until May 13<sup>th</sup> 2021 (Table 2).
- As regards Archaeological sites, during the five month period from January to May 2022, compared to the corresponding period of 2021, an increase of 1017.9% was recorded in the number of visitors, while an increase of 820.0% was observed in the number of free admission visitors and of 1193.7% in the relevant receipts, given the suspension of operation of Archaeological sites from November 7<sup>th</sup> 2020 until May 13<sup>th</sup> 2021 (Table 2).

**Graph 1: Visitors of Museums and Archaeological sites (January 2017 – May2022)**



**Information on methodological issues:**

Sectoral Statistics Division  
Tourism and Culture Statistics Section  
Head of Section: Eleni Papadopoulou  
Tel: +30 213 135 2168  
e-mail: [e.papadopoulou@statistics.gr](mailto:e.papadopoulou@statistics.gr)

**Information for data provision:**

Tel. +30 213 135 2022, 2308, 2310  
e-mail: [data.dissem@statistics.gr](mailto:data.dissem@statistics.gr)

**TABLE 1: VISITORS OF MUSEUMS AND ARCHAEOLOGICAL SITES - TOTAL RECEIPTS  
(MAY 2021 & MAY 2022)**

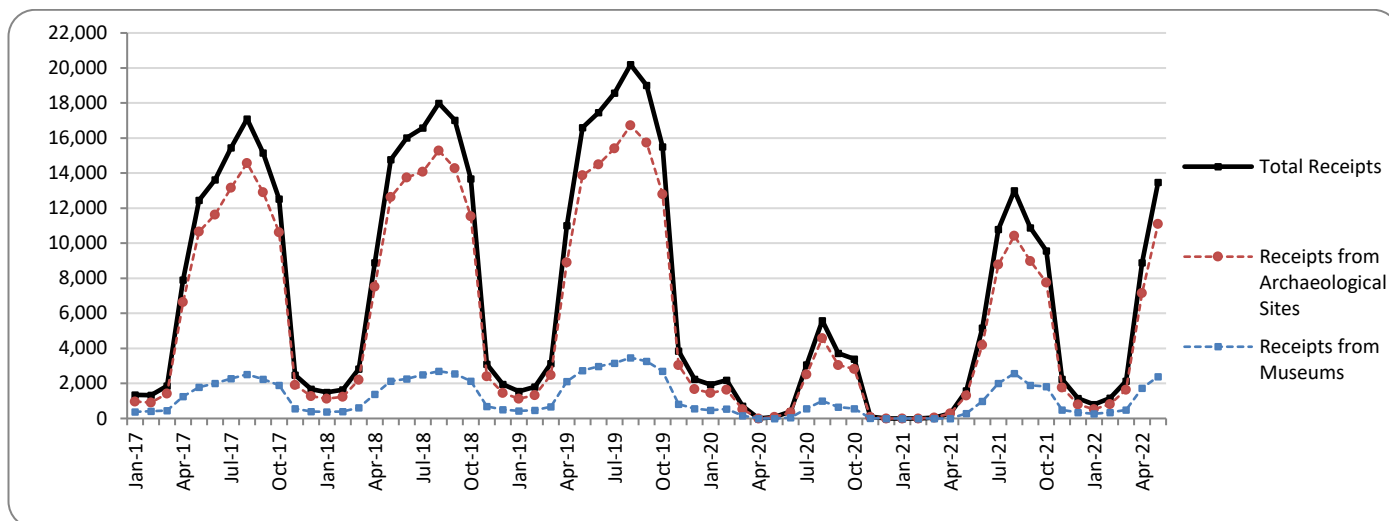
<b>I. NUMBER OF VISITORS</b>			
Museums and Archaeological sites	2021 <sup>(2)</sup>	2022	Change 2022/2021
<b>Total number of visitors (A+B)</b>	<b>228,786</b>	<b>1,759,045</b>	<b>668.9%</b>
<b>A. Museums (C+E)</b>	<b>65,182</b>	<b>508,632</b>	<b>680.3%</b>
Acropolis Museum	13,986	150,545	976.4%
National Archaeological	4,587	45,152	884.3%
Ancient Olympia	941	13,531	1337.9%
Palace of the Grand Master (Rhodes)	3,178	26,881	745.8%
Herakleion Archaeological (Crete)	3,114	25,111	706.4%
White Tower	4,189	21,576	415.1%
Delphi	1,672	18,697	1018.2%
Other museums	33,515	207,139	518.0%
<b>B. Archaeological Sites (D+F)</b>	<b>163,604</b>	<b>1,250,413</b>	<b>664.3%</b>
Epidavros <sup>(1)</sup>	5,500	48,891	788.9%
The Acropolis of Mycenae & Atreus' Treasure	4,294	51,927	1109.3%
The Acropolis of Athens	42,855	315,917	637.2%
Sounio	13,339	32,393	142.8%
The Acropolis of Lindos	7,084	66,559	839.6%
Royal Tombs of Vergina	1,859	28,608	1438.9%
Ancient Olympia	4,309	37,212	763.6%
Knossos (Crete)	10,429	84,758	712.7%
Phaistos (Crete)	1,243	8,411	576.7%
Ancient Korinthos <sup>(1)</sup>	1,619	22,177	1269.8%
Mystras <sup>(1)</sup>	2,716	17,411	541.1%
Delphi	4,282	33,275	677.1%
Other archaeological sites	64,075	502,874	684.8%
<b>II. VISITORS WHO PAID TICKET</b>			
	2021 <sup>(2)</sup>	2022	Change 2022/2021
<b>Total number of visitors who paid ticket (C+D)</b>	<b>141,029</b>	<b>1,154,292</b>	<b>718.5%</b>
C. Museums	34,507	285,606	727.7%
D. Archaeological sites	106,522	868,686	715.5%
<b>III. VISITORS WITH FREE ADMISSION TICKETS</b>			
	2021 <sup>(2)</sup>	2022	Change 2022/2021
<b>Total number of visitors with free admission ticket (E+F)</b>	<b>87,757</b>	<b>604,753</b>	<b>589.1%</b>
E. Museums	30,675	223,026	627.1%
F. Archaeological sites	57,082	381,727	568.7%
<b>IV. RECEIPTS (euros)</b>			
	2021 <sup>(2)</sup>	2022	Change 2022/2021
<b>Total Receipts (G+H)</b>	<b>1,590,402</b>	<b>13,482,621</b>	<b>747.7%</b>
G. Museums	279,225	2,387,636	755.1%
H. Archaeological sites	1,311,177	11,094,985	746.2%

<sup>(1)</sup> Flat rate ticket, valid both for the museum and the archaeological site.

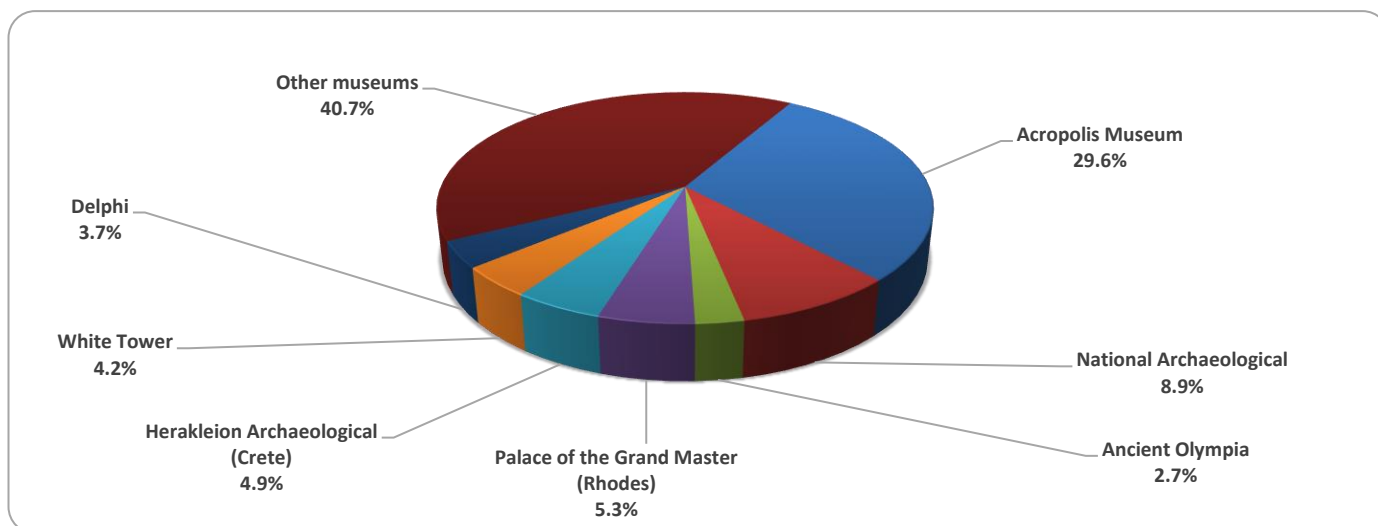
<sup>(2)</sup> The operation of Museums was suspended gradually from November 1<sup>st</sup> 2020 until May 13<sup>th</sup> 2021. The operation of Archaeological Sites was suspended from November 7<sup>th</sup> 2020 until March 21<sup>st</sup> 2021, in the framework of the preventative measures against the Covid-19 pandemic.

The following graphs depict the evolution of the receipts of Museums and Archaeological Sites (Graph 2), as well as the number of visitors by Museum (Graph 3) and by Archaeological Site (Graph 4).

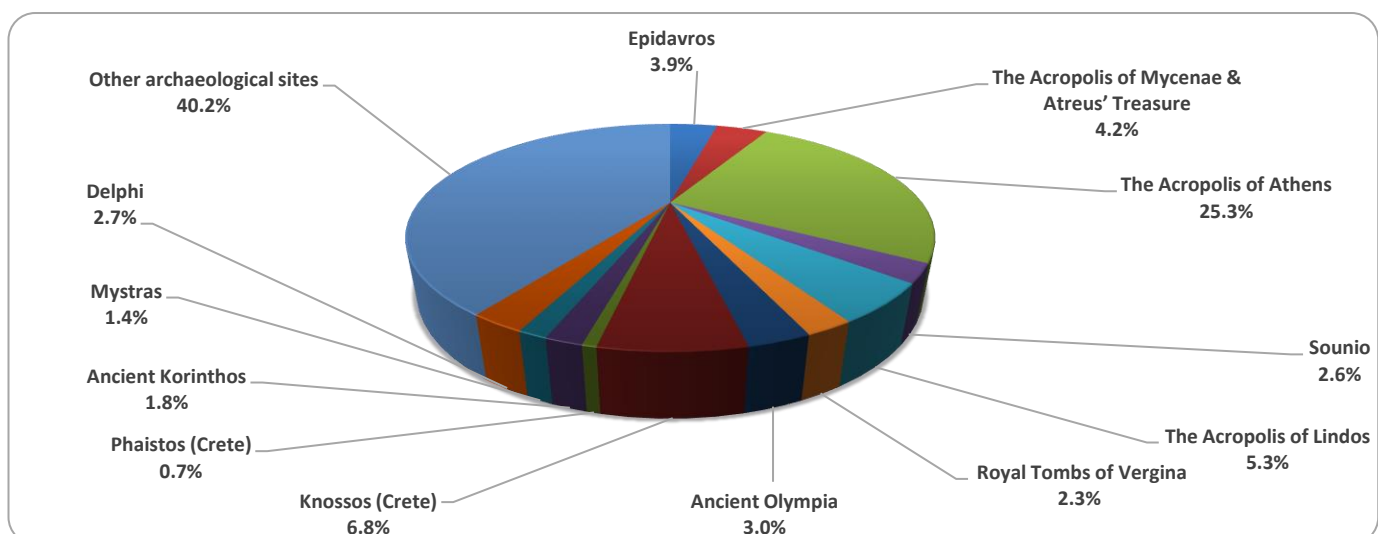
**Graph 2: Receipts from Museums and Archaeological Sites (January 2017 – May 2022)**  
(in thousand euro)



**Graph 3: Percentage distribution of visitors by Museum, May 2022**



**Graph 4: Percentage distribution of visitors by Archaeological site, May 2022**



**TABLE 2: VISITORS OF MUSEUMS AND ARCHAEOLOGICAL SITES - TOTAL RECEIPTS  
(2020, 2021, JANUARY- MAY 2021, 2022)**

<b>I. VISITORS</b>					
Museums and Archaeological sites	2020 <sup>(2)</sup>	2021 <sup>(2)</sup>	JANUARY -MAY		change
			2021 <sup>(2)</sup>	2022	2022/2021
<b>Total number of visitors (A+B)</b>	<b>3,772,828</b>	<b>7,357,026</b>	<b>310,736</b>	<b>4,063,633</b>	<b>1207.7%</b>
<b>A. Museums (C+E)</b>	<b>1,100,904</b>	<b>2,047,481</b>	<b>65,182</b>	<b>1,318,519</b>	<b>1922.8%</b>
Acropolis Museum	325,969	547,908	13,986	398,159	2746.8%
National Archaeological	98,175	189,208	4,587	126,122	2649.6%
Ancient Olympia	21,956	34,367	941	31,706	3269.4%
Palace of the Grand Master (Rhodes)	54,572	142,530	3,178	46,973	1378.1%
Herakleion Archaeological (Crete)	63,027	127,574	3,114	48,493	1457.3%
White Tower	62,007	77,983	4,189	52,408	1151.1%
Delphi	41,984	58,102	1,672	47,942	2767.3%
Other museums	433,214	869,809	33,515	566,716	1590.9%
<b>B. Archaeological Sites (D+F)</b>	<b>2,671,924</b>	<b>5,309,545</b>	<b>245,554</b>	<b>2,745,114</b>	<b>1017.9%</b>
Epidavros <sup>(1)</sup>	103,532	182,118	6,442	114,523	1677.8%
The Acropolis of Mycenae & Atreus' Treasure	78,839	156,227	5,001	117,557	2250.7%
The Acropolis of Athens	620,132	1,219,717	72,296	797,148	1002.6%
Sounio	100,319	171,348	28,252	100,039	254.1%
The Acropolis of Lindos	156,462	349,418	7,360	99,192	1247.7%
Royal Tombs of Vergina	37,586	56,790	1,859	58,869	3066.7%
Ancient Olympia	64,759	143,549	5,984	78,838	1217.5%
Knossos (Crete)	175,927	445,160	12,235	154,847	1165.6%
Phaistos (Crete)	31,885	48,599	1,409	14,623	937.8%
Ancient Korinthos <sup>(1)</sup>	31,981	59,271	2,148	45,195	2004.1%
Mystras <sup>(1)</sup>	36,352	78,762	3,198	43,431	1258.1%
Delphi	75,983	146,061	5,215	92,067	1665.4%
Other archaeological sites	1,158,167	2,252,525	94,155	1,028,785	992.7%
<b>II. VISITORS WHO PAID TICKET</b>					
	2020 <sup>(2)</sup>	2021 <sup>(2)</sup>	JANUARY -MAY		change
			2021 <sup>(2)</sup>	2022	2022/2021
<b>Total number of visitors who paid ticket (C+D)</b>	<b>2,268,397</b>	<b>5,090,418</b>	<b>172,563</b>	<b>2,452,589</b>	<b>1321.3%</b>
C. Museums	605,426	1,289,896	34,507	696,455	1918.3%
D. Archaeological sites	1,662,971	3,800,522	138,056	1,756,134	1172.0%
<b>III. VISITORS WITH FREE ADMISSION TICKETS</b>					
	2020 <sup>(2)</sup>	2021 <sup>(2)</sup>	JANUARY -MAY		change
			2021 <sup>(2)</sup>	2022	2022/2021
<b>Total number of visitors with free admission ticket (E+F)</b>	<b>1,504,431</b>	<b>2,266,608</b>	<b>138,173</b>	<b>1,611,044</b>	<b>1066.0%</b>
E. Museums	495,478	757,585	30,675	622,064	1927.9%
F. Archaeological sites	1,008,953	1,509,023	107,498	988,980	820.0%
<b>IV. RECEIPTS (euros)</b>					
	2020 <sup>(2)</sup>	2021 <sup>(2)</sup>	JANUARY -MAY		change
			2021 <sup>(2)</sup>	2022	2022/2021
<b>Total Receipts (G+H)</b>	<b>21,176,036</b>	<b>54,735,194</b>	<b>1,920,430</b>	<b>26,463,369</b>	<b>1278.0%</b>
G. Museums	4,047,401	10,385,644	279,225	5,230,813	1773.3%
H. Archaeological sites	17,128,635	44,349,550	1,641,205	21,232,556	1193.7%

<sup>(1)</sup> Flat rate ticket, valid both for the museum and the archaeological site.

<sup>(2)</sup> The operation of Museums was suspended from March 14<sup>th</sup> until June 16<sup>th</sup> 2020 and again gradually from November 1<sup>st</sup> 2020 until May 13<sup>th</sup> 2021. The operation of Archaeological Sites was suspended from March 14<sup>th</sup> until May 17<sup>th</sup> 2020 and from November 7<sup>th</sup> 2020 until March 21<sup>st</sup> 2021, in the framework of the preventative measures against the Covid-19 pandemic.

## EXPLANATORY NOTES

<b>Survey on Museums and Archaeological Sites Attendance</b>	The Survey on Museums and Archaeological Sites Attendance has been producing results since 1970. The survey collects data from the Hellenic Organization of Cultural Resources Development (HOCRED), supervised by the Ministry of Culture and Sports, on the number of visitors and the receipts from the tickets sold in the Museums and Archaeological sites of the country. The corresponding data for the Acropolis Museum is available from December 2009 onwards.
<b>Legal Framework</b>	The survey is conducted since 1970 on a regular basis and it produces results on a monthly and yearly basis, in compliance with the Joint Ministerial Decision 15189/B379/73.
<b>Reference Period</b>	1/5/2022 - 31/5/2022
<b>Methodology and Definitions</b>	The survey is conducted on a monthly basis from data mainly collected from the Hellenic Organization of Cultural Resources Development (HOCRED), supervised by the Ministry of Culture and Sports, on the number of visitors and the receipts from the tickets sold in the Museums and Archaeological sites of the Country. ELSTAT tabulates and presents the data for the whole of the Country, by month and by year.
	<b>Number of flat rate tickets:</b>
	From April 1999 onwards, in some museums and the nearby archaeological sites, in addition to the ordinary ticket, a new “flat rate ticket” was established, which is valid for both the museum and the nearby archaeological site. The total number of these flat rate tickets for <b>May 2022</b> was <b>103,484</b>
<b>References</b>	More information on the Survey on Museums and Archaeological Sites Attendance and detailed time series are available on: <a href="http://www.statistics.gr/en/statistics/-/publication/SCI21/">http://www.statistics.gr/en/statistics/-/publication/SCI21/</a>