



PRESS RELEASE

TURNOVER AND VOLUME INDICES FOR MOTOR TRADE: January-March 2022

The Hellenic Statistical Authority announces, for the first time, the monthly Turnover and Volume Indices for Motor Trade with base year 2015=100.0 of the period January-March 2022, the evolution of which, according to provisional data without calendar and seasonal adjustment, is as follows:

The Turnover Indices for Motor Trade in division 45 of NACE Rev. 2 (wholesale, retail trade, repair of motor vehicles and motorcycles) of the period January-March 2022, compared with the corresponding indices of the period January-March 2021, recorded annual rates of change as follows (Table 1):

- January, decrease 1.1%
- February, increase 20.8% and
- March, increase 5.4%.

While the **Volume Indices in division 45** recorded annual rates of change as follows:

- January, decrease 9.4%,
- February, increase 11.4%
- and March, decrease 3.2%.

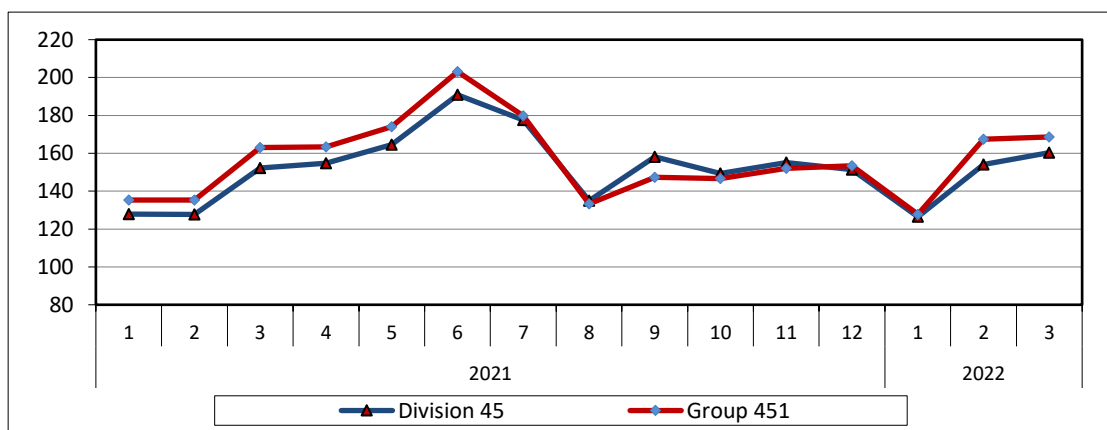
The Turnover Indices for Motor Trade in group 451 (sale of motor vehicles) of the period January-March 2022, compared with the corresponding indices of the period January-March 2021, recorded annual rates of change as follows (Table 1):

- January, decrease 5.5%
- February, increase 24.2% and
- March, increase 3.4%,

While the **Volume Indices** in group 451 recorded annual rates of change as follows:

- January, decrease 15.8%,
- February, increase 11.8%
- and March, decrease 7.3%.

Graph 1. Evolution of Turnover Indices for Motor Trade in division 45 and group 451 of NACE Rev. 2 (2015=100.0)



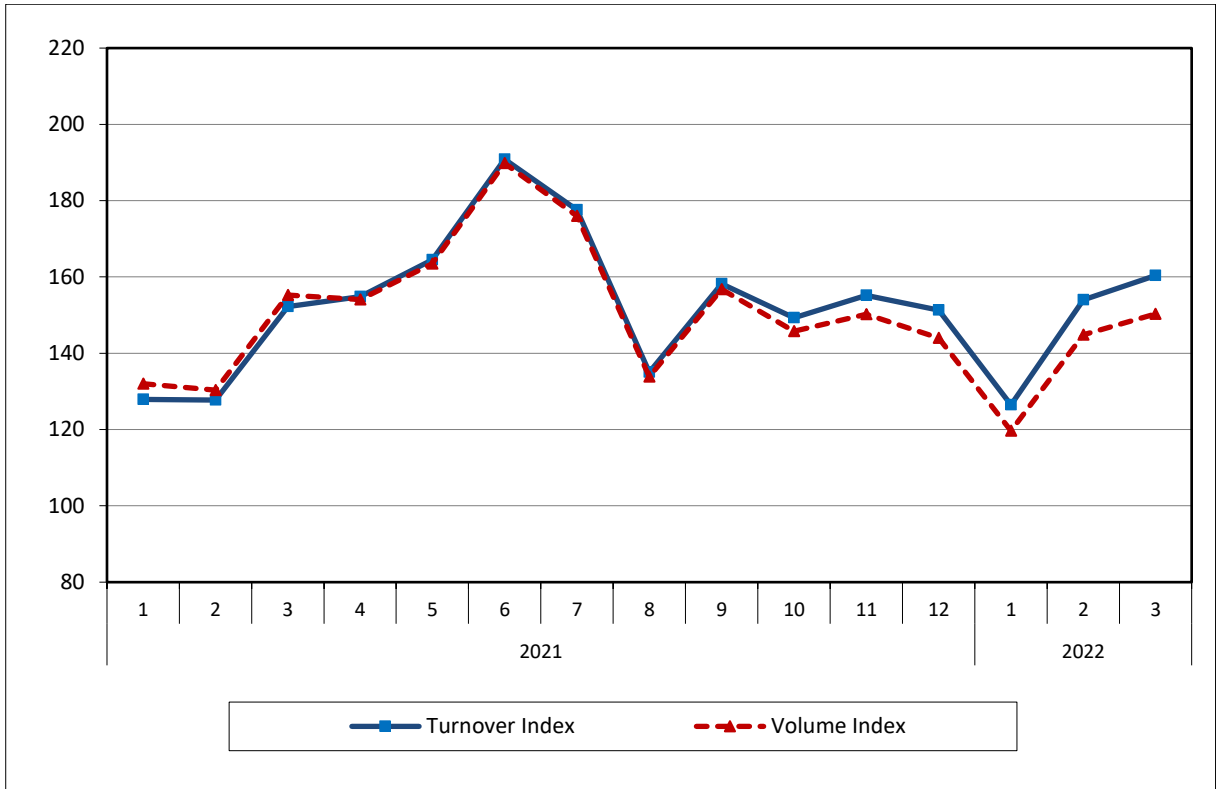
Information for methodological issues:

Division of Business Statistics
Section of Trade and Services Indices
Head of the Section: Konstantinos Thomas
Tel: +30 213 135 2048
E-mail: k.thomas@statistics.gr

Information for data provision:

Tel: +30 213 135 2022. 2308. 2310
e-mail: data.dissem@statistics.gr

Graph 2. Evolution of Turnover and Volume Indices for Motor Trade in division 45 of NACE Rev. 2 (2015=100.0)



Graph 3. Evolution of Turnover and Volume Indices for Motor Trade in group 451 of NACE Rev. 2 (2015=100.0)

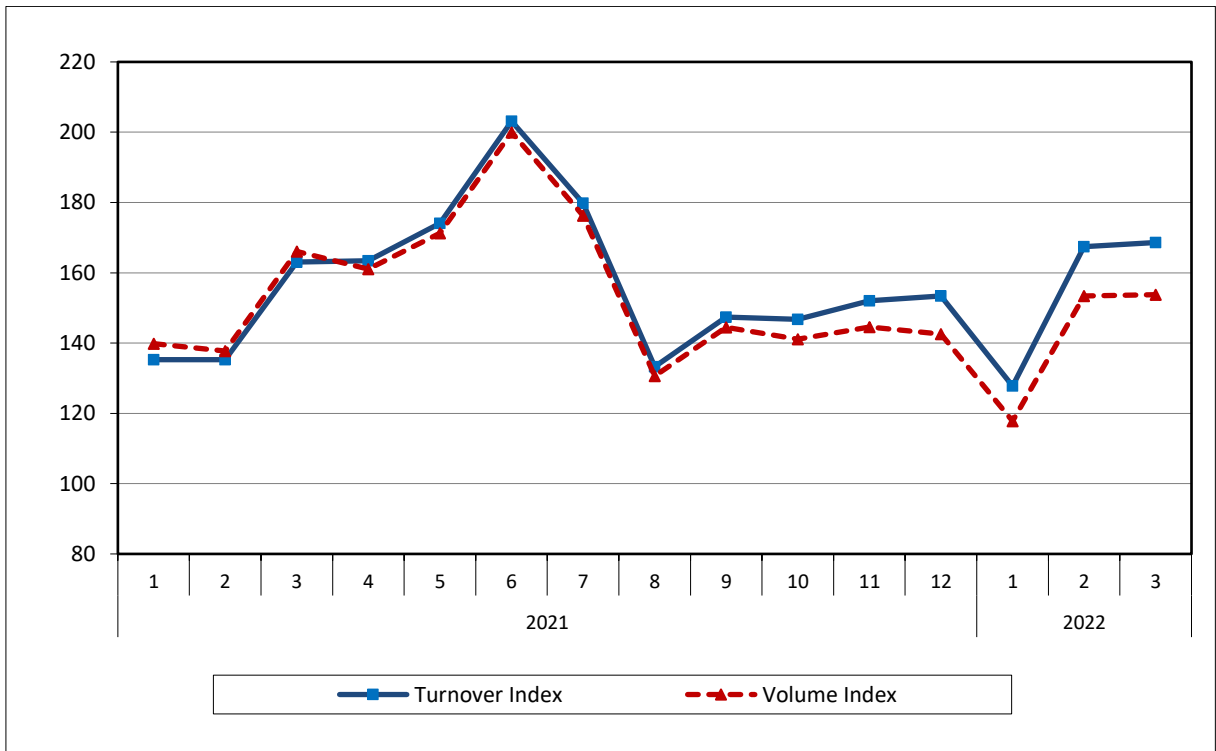


Table 1: Evolution of Turnover and Volume Indices for Motor Trade (in division 45 and group 451 of NACE Rev. 2)
(Data without calendar and seasonal adjustment)

Base year: 2015=100.0

Year and month	Turnover Index						Volume Index						
	Division 45 ⁽¹⁾			Group 451 ⁽²⁾			Division 45 ⁽¹⁾			Group 451 ⁽²⁾			
	Indices	Monthly rates of change (%)	Annual rates of change (%)	Indices	Monthly rates of change (%)	Annual rates of change (%)	Indices	Monthly rates of change (%)	Annual rates of change (%)	Indices	Monthly rates of change (%)	Annual rates of change (%)	
2021:	1	128.0		135.3			132.0			139.9			
	2	127.7	-0.2	135.3	0.0		130.3	-1.3		137.7	-1.5		
	3	152.2	19.2	163.1	20.6		155.3	19.2		166.1	20.5		
	4	154.8	-1.7	163.4	0.2		154.1	-0.8		161.1	-3.0		
	5	164.5	6.3	174.1	6.5		163.5	6.1		171.3	-27.7		
	6	190.9	16.0	203.1	16.7		189.9	16.1		200.0	16.8		
	7	177.6	-7.0	180.0	11.4		176.1	-7.3		176.3	-11.8		
	8	135.0	-24.0	133.2	-25.9		133.8	-24.0		130.6	-25.9		
	9	158.2	17.2	147.4	10.6		156.8	17.1		144.5	10.6		
	10	149.3	-5.6	147.0	-0.4		145.8	-7.0		141.1	-2.4		
	11	155.2	3.9	152.1	3.6		150.2	3.0		144.5	2.5		
	12	151.3	-2.5	153.4	0.9		144.0	-4.1		142.6	-1.4		
Annual Average		153.7		157.2			152.6			154.6			
2022:	1**	126.5	-16.4	-1.1	127.8	-16.7	-5.5	119.7	-16.9	-9.4	117.8	-17.4	-15.8
	2**	154.0	21.8	20.8	167.4	31.1	24.2	144.8	21.0	11.4	153.4	30.2	11.8
	3*	160.4	4.2	5.4	168.6	0.7	3.4	150.3	3.8	-3.2	153.8	0.3	-7.3

* Provisional data

** Revised data

⁽¹⁾ Wholesale and retail trade, repair of motor vehicles and motorcycles

⁽²⁾ Sale of motor vehicles

Note: The indices and the percentage changes are published rounded up to one decimal digit.

For the indices of the year 2021, annual rates of change are not available, as the index is calculated on a monthly basis since January 2021.

Table 2: Evolution of seasonally adjusted Turnover and Volume Indices for Motor Trade
(in division 45 and group 451 of NACE Rev. 2)

Base year 2015=100.0

Year and month		Turnover Index				Volume Index			
		Division 45 ⁽¹⁾		Group 451 ⁽²⁾		Division 45 ⁽¹⁾		Group 451 ⁽²⁾	
		Indices	Monthly rates of change (%)	Indices	Monthly rates of change (%)	Indices	Monthly rates of change (%)	Indices	Monthly rates of change (%)
2021:	1	148.7		155.8		154.5		160.4	
	2	141.7	-4.7	145.5	-6.6	146.6	-5.1	149.1	-7.1
	3	143.2	1.0	148.7	2.2	152.0	3.7	151.4	1.5
	4	155.9	8.9	163.1	9.7	154.1	1.4	162.2	7.2
	5	150.5	-3.4	154.9	-5.1	147.5	-4.2	153.0	-5.7
	6	158.2	5.1	166.3	7.4	154.4	4.7	162.3	6.1
	7	151.8	-4.0	154.7	-7.0	148.3	-4.0	149.9	-7.7
	8	149.7	-1.4	149.7	-3.2	147.9	-0.2	146.1	-2.5
	9	157.7	5.3	158.1	5.6	154.9	4.7	153.9	5.3
	10	157.7	0.0	160.9	1.8	153.8	-0.7	154.5	0.4
	11	157.5	-0.1	157.9	-1.9	153.6	-0.1	149.9	-3.0
	12	154.0	-2.2	153.5	-2.8	148.6	-3.3	143.3	-4.4
Annual Average		152.2		155.8		151.4		153.0	
2022:	1	153.1	-0.6	155.5	1.3	147.8	-0.5	145.1	1.2
	2	164.4	7.4	172.7	11.1	158.2	7.1	160.4	10.5
	3	158.8	-3.4	163.4	-5.4	153.8	-2.8	150.0	-6.5

⁽¹⁾ Wholesale and retail trade, repair of motor vehicles and motorcycles

⁽²⁾ Sale of motor vehicles

It should be noted, that the time-series of the seasonally adjusted index is recalculated every time a new observation is added and could differ from 100 for the base year, as seasonal effect is not the same each year. Therefore, the seasonally adjusted data differ from the published data of the Press Releases of previous periods.

METHODOLOGICAL NOTES

Generally	The Turnover Indices for Motor Trade as quarterly indices, were first released in 2006, with base year (b.y.) the year 2005=100.0. From January 2021 onwards, the monthly turnover and volume indices are compiled with b.y. 2015=100.0.
Purpose of the index – definitions	The purpose of these indices is to measure in value terms the activity of the motor trade sector. Turnover excludes VAT and comprises the totals invoiced by the enterprise during the reference period (quarter), which correspond to sales of goods and services supplied to third parties.
Legal framework	The compilation and publication of the Turnover Index is based on the framework of the implementation of Council Regulation (EC) No 1165/1998 concerning short-term statistics (STS-R), as well as Regulation (EC) No 1158/2005 of the European Parliament and of the Council amending Council Regulation (EC) No 1165/1998. Furthermore, this index is governed by Regulation (EC) No 1893/2006 of the European Parliament and of the Council, by Commission Regulation (EC) No 656/2007, by Regulation (EC) No 451/2008 of the Council, by Regulation (EU) No 2019/2152 of the European Parliament and of the Council on European business statistics, as well as Commission Implementing Regulation (EU) No 2020/1197 laying down technical specifications and arrangements pursuant to Regulation (EU) No 2019/2152.
Reference period	Month.
Base year	2015=100.0.
Revision	Pursuant to the provisions of Council Regulation No 1165/1998 concerning “Short Term Statistics”, the indices are updated every five (5) years in years ending in 0 or 5. The purpose of updating the Turnover Indices for Motor Trade is to adjust the indices to changes in the structure of the above sector. During the last revision, following the statistical classification NACE Rev.2, the group “retail sale of automotive fuel” was excluded from Motor Trade Sector (division 45) and is now surveyed under Retail Trade (division 47).
Statistical classification	The NACE Rev.2 statistical classification of economic activities is used in conformity with Regulation (EC) No 1893/2006 of the Council and of the European Parliament.
Geographical coverage	The indices cover the whole of the country with data coming from 45 Regional Units.
Coverage of economic activities	The indices cover the division 45 (wholesale and retail trade and repair of motor vehicles and motorcycles) and the group 451 (sale of motor vehicles) of NACE Rev.2 statistical classification of economic activities.
Statistical survey	The indices include 2,949 enterprises, with an annual turnover (in year 2015) equal or greater than 200,000€, from which a random representative sample of 247 enterprises was therefore selected and surveyed.
Calculating the indices	The indices are calculated by applying the chaining method.
Seasonal adjustment	Seasonal adjustment is the procedure followed to remove the impact of seasonality on the time-series (after eliminating the seasonal effects, e.g: the beginning of the school year, holidays, tourist period, etc) in order to improve the comparability over time. The method used is the TRAMO-SEATS with the use of JDemetra+ 2.0.0. The whole series with seasonally adjusted indices is recalculated every time a new observation is added into the time-series.
Compiled index series	The time-series are compiled from the 1 st quarter 2000 with base year 2015=100.0. In addition, seasonally adjusted timeseries data are compiled.
Publication of data	Data on the Turnover Indices for Motor Trade (b.y. 2015=100.0) are released quarterly from the 3 rd quarter of 2018, with retrospective data from the 1 st quarter 2000. The monthly indices are published from May 2022, with retrospective data without calendar and seasonal adjustment from January 2021.
References	More information on the methodology concerning the compilation and calculation of the indices and for the time series are available on the ELSTAT’s website: http://www.statistics.gr/en/statistics/-/publication/DKT45/