



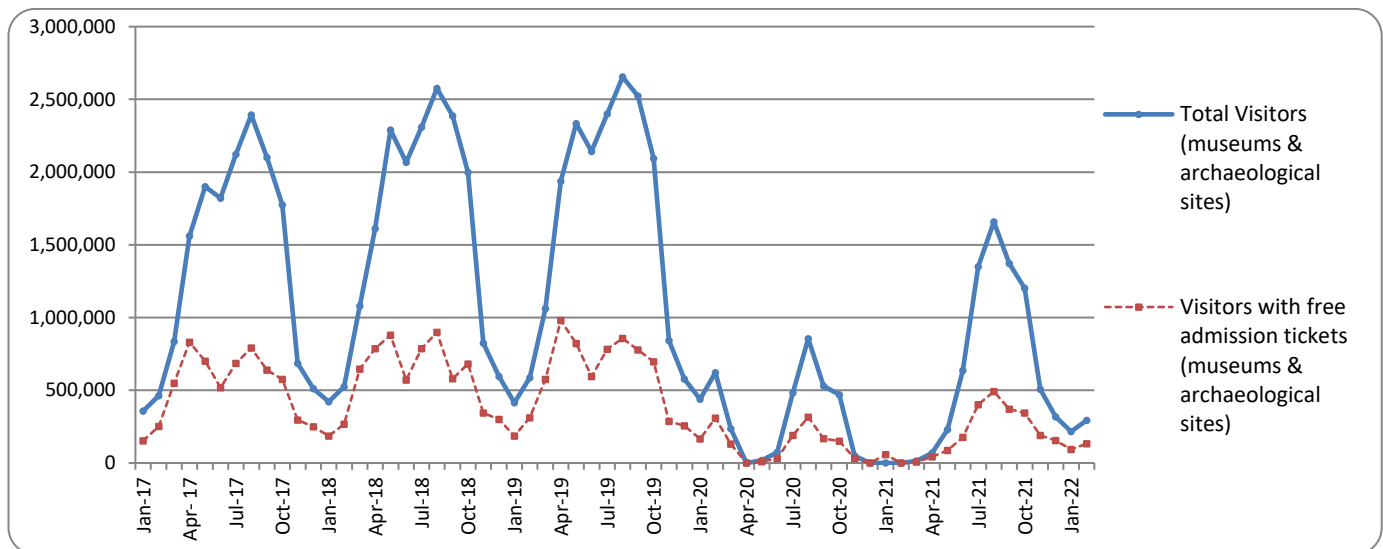
PRESS RELEASE

SURVEY ON MUSEUMS AND ARCHAEOLOGICAL SITES ATTENDANCE FEBRUARY 2022

The Hellenic Statistical Authority (ELSTAT) announces the results of the *Survey on Museums and Archaeological Sites Attendance* for February 2022. More specifically:

- In February 2022 Museums operated fully, whereas during February 2021 they remained closed, given the fact that in the framework of the preventative measures against the Covid-19 pandemic, the operation of the museums was gradually suspended from November 1st 2020 until May 13th 2021 (Table 1).
- In February 2022 Archaeological sites operated fully, whereas during February 2021 they remained closed, due to the suspension of operation from November 7th 2020 until March 21st 2021, in the framework of the preventative measures against the Covid-19 pandemic (Table 1).
- During the two month period from January to February 2022, Museums operated fully, in contrast to the corresponding period of 2021, during which they remained closed, given the fact that in the framework of the preventative measures against the Covid-19 pandemic, the operation of the museums was gradually suspended from November 1st 2020 until May 13th 2021 (Table 2).
- As regards Archaeological sites, during the two month period from January to February 2022 they operated fully, in contrast to the corresponding period of 2021, during which they remained closed, due to the suspension of operation from November 7th 2020 until March 21st 2021, in the framework of the preventative measures against the Covid-19 pandemic (Table 2).

Graph 1: Visitors of Museums and Archaeological sites (January 2017 – February 2022)



Information on methodological issues:

Sectoral Statistics Division
Tourism and Culture Statistics Section
Head of Section: Eleni Papadopoulou
Tel: +30 213 135 2168
e-mail: e.papadopoulou@statistics.gr

Information for data provision:

Tel. +30 213 135 2022, 2308, 2310
e-mail: data.dissem@statistics.gr

**TABLE 1: VISITORS OF MUSEUMS AND ARCHAEOLOGICAL SITES - TOTAL RECEIPTS
(FEBRUARY 2021 & FEBRUARY 2022)**

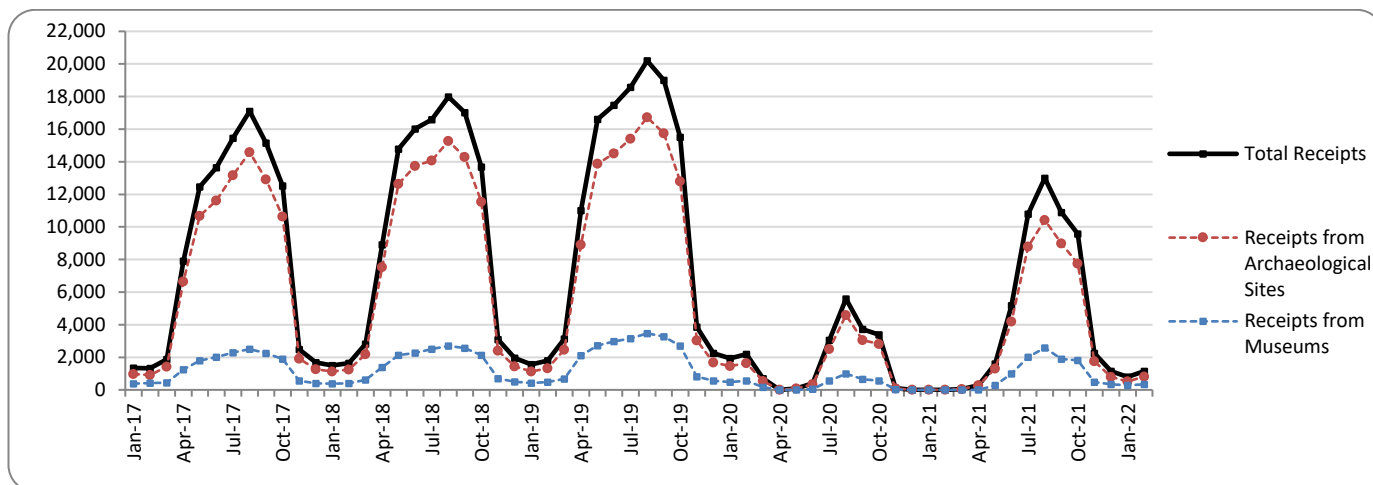
I. NUMBER OF VISITORS			
Museums and Archaeological sites	2021 ⁽²⁾	2022	Change 2022/2021
Total number of visitors (A+B)	-	294,489	-
A. Museums (C+E)	-	122,772	-
Acropolis Museum	-	34,723	-
National Archaeological	-	11,937	-
Ancient Olympia	-	1,095	-
Palace of the Grand Master (Rhodes)	-	981	-
Herakleion Archaeological (Crete)	-	1,560	-
White Tower	-	4,288	-
Delphi	-	4,018	-
Other museums	-	64,170	-
B. Archaeological Sites (D+F)	-	171,717	-
Epidavros ⁽¹⁾	-	5,064	-
The Acropolis of Mycenae & Atreus' Treasure	-	5,680	-
The Acropolis of Athens	-	70,761	-
Sounio	-	11,583	-
The Acropolis of Lindos	-	432	-
Royal Tombs of Vergina	-	2,552	-
Ancient Olympia	-	2,130	-
Knossos (Crete)	-	2,543	-
Phaistos (Crete)	-	203	-
Ancient Korinthos ⁽¹⁾	-	2,157	-
Mystras ⁽¹⁾	-	2,057	-
Delphi	-	7,679	-
Other archaeological sites	-	58,876	-
II. VISITORS WHO PAID TICKET			
	2021 ⁽²⁾	2022	Change 2022/2021
Total number of visitors who paid ticket (C+D)	-	161,124	-
C. Museums	-	64,481	-
D. Archaeological sites	-	96,643	-
III. VISITORS WITH FREE ADMISSION TICKETS			
	2021 ⁽²⁾	2022	Change 2022/2021
Total number of visitors with free admission ticket (E+F)	-	133,365	-
E. Museums	-	58,291	-
F. Archaeological sites	-	75,074	-
IV. RECEIPTS (euros)			
	2021 ⁽²⁾	2022	Change 2022/2021
Total Receipts (G+H)	-	1,155,755	-
G. Museums	-	344,842	-
H. Archaeological sites	-	810,913	-

⁽¹⁾ Flat rate ticket, valid both for the museum and the archaeological site.

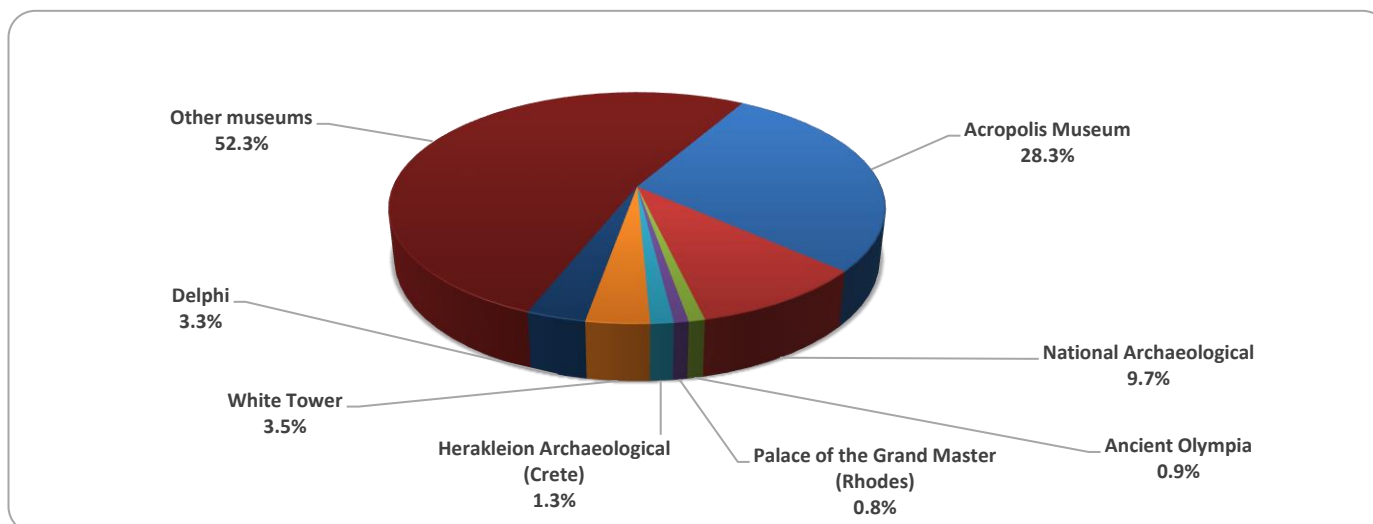
⁽²⁾ The operation of Museums was suspended gradually from November 1st 2020 until May 13th 2021. The operation of Archaeological Sites was suspended from November 7th 2020 until March 21st 2021, in the framework of the preventative measures against the Covid-19 pandemic.

The following graphs depict the evolution of the receipts of Museums and Archaeological Sites (Graph 2), as well as the number of visitors by Museum (Graph 3) and by Archaeological Site (Graph 4).

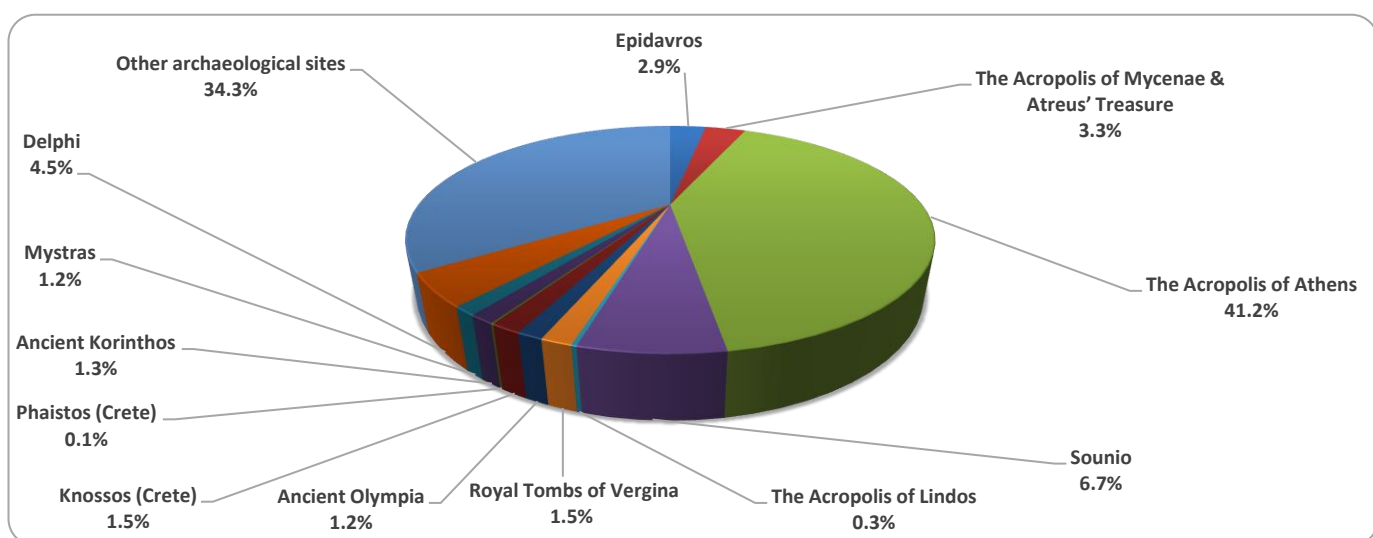
Graph 2: Receipts from Museums and Archaeological Sites (January 2017 – February 2022)
(in thousand euro)



Graph 3: Percentage distribution of visitors by Museum, February 2022



Graph 4: Percentage distribution of visitors by Archaeological site, February 2022



**TABLE 2: VISITORS OF MUSEUMS AND ARCHAEOLOGICAL SITES - TOTAL RECEIPTS
(2020, 2021, JANUARY- FEBRUARY 2021, 2022)**

I. VISITORS					
Museums and Archaeological sites	2020 ⁽²⁾	2021 ⁽²⁾	JANUARY -FEBRUARY		change 2022/2021
			2021 ⁽²⁾	2022	
Total number of visitors (A+B)	3,772,828	7,357,026	-	511,317	-
A. Museums (C+E)	1,100,904	2,047,481	-	213,060	-
Acropolis Museum	325,969	547,908	-	58,049	-
National Archaeological	98,175	189,208	-	19,855	-
Ancient Olympia	21,956	34,367	-	2,016	-
Palace of the Grand Master (Rhodes)	54,572	142,530	-	1,739	-
Herakleion Archaeological (Crete)	63,027	127,574	-	3,039	-
White Tower	62,007	77,983	-	8,360	-
Delphi	41,984	58,102	-	7,865	-
Other museums	433,214	869,809	-	112,137	-
B. Archaeological Sites (D+F)	2,671,924	5,309,545	-	298,257	-
Epidavros ⁽¹⁾	103,532	182,118	-	9,261	-
The Acropolis of Mycenae & Atreus' Treasure	78,839	156,227	-	10,872	-
The Acropolis of Athens	620,132	1,219,717	-	114,983	-
Sounio	100,319	171,348	-	22,462	-
The Acropolis of Lindos	156,462	349,418	-	698	-
Royal Tombs of Vergina	37,586	56,790	-	6,126	-
Ancient Olympia	64,759	143,549	-	4,071	-
Knossos (Crete)	175,927	445,160	-	4,463	-
Phaistos (Crete)	31,885	48,599	-	420	-
Ancient Korinthos ⁽¹⁾	31,981	59,271	-	4,041	-
Mystras ⁽¹⁾	36,352	78,762	-	4,491	-
Delphi	75,983	146,061	-	15,733	-
Other archaeological sites	1,158,167	2,252,525	-	100,636	-
II. VISITORS WHO PAID TICKET					
	2020 ⁽²⁾	2021 ⁽²⁾	JANUARY -FEBRUARY		change 2022/2021
			2021 ⁽²⁾	2022	
Total number of visitors who paid ticket (C+D)	2,268,397	5,090,418	-	283,686	-
C. Museums	605,426	1,289,896	-	115,647	-
D. Archaeological sites	1,662,971	3,800,522	-	168,039	-
III. VISITORS WITH FREE ADMISSION TICKETS					
	2020 ⁽²⁾	2021 ⁽²⁾	JANUARY -FEBRUARY		change 2022/2021
			2021 ⁽²⁾	2022	
Total number of visitors with free admission ticket (E+F)	1,504,431	2,266,608	-	227,631	-
E. Museums	495,478	757,585	-	97,413	-
F. Archaeological sites	1,008,953	1,509,023	-	130,218	-
IV. RECEIPTS (euros)					
	2020 ⁽²⁾	2021 ⁽²⁾	JANUARY -FEBRUARY		change 2022/2021
			2021 ⁽²⁾	2022	
Total Receipts (G+H)	21,176,036	54,735,194	-	1,949,994	-
G. Museums	4,047,401	10,385,644	-	617,717	-
H. Archaeological sites	17,128,635	44,349,550	-	1,332,277	-

⁽¹⁾ Flat rate ticket, valid both for the museum and the archaeological site.

⁽²⁾ The operation of Museums was suspended from March 14th until June 16th 2020 and again gradually from November 1st 2020 until May 13th 2021. The operation of Archaeological Sites was suspended from March 14th until May 17th 2020 and from November 7th 2020 until March 21st 2021, in the framework of the preventative measures against the Covid-19 pandemic.

EXPLANATORY NOTES

Survey on Museums and Archaeological Sites Attendance	The Survey on Museums and Archaeological Sites Attendance has been producing results since 1970. The survey collects data from the Hellenic Organization of Cultural Resources Development (HOCRED), supervised by the Ministry of Culture and Sports, on the number of visitors and the receipts from the tickets sold in the Museums and Archaeological sites of the country. The corresponding data for the Acropolis Museum is available from December 2009 onwards.
Legal Framework	The survey is conducted since 1970 on a regular basis and it produces results on a monthly and yearly basis, in compliance with the Joint Ministerial Decision 15189/B379/73.
Reference Period	1/2/2022 - 28/2/2022
Methodology and Definitions	The survey is conducted on a monthly basis from data mainly collected from the Hellenic Organization of Cultural Resources Development (HOCRED), supervised by the Ministry of Culture and Sports, on the number of visitors and the receipts from the tickets sold in the Museums and Archaeological sites of the Country. ELSTAT tabulates and presents the data for the whole of the Country, by month and by year.
	Number of flat rate tickets: From April 1999 onwards, in some museums and the nearby archaeological sites, in addition to the ordinary ticket, a new “flat rate ticket” was established, which is valid for both the museum and the nearby archaeological site. The total number of these flat rate tickets for February2022 was 6,206
References	More information on the Survey on Museums and Archaeological Sites Attendance and detailed time series are available on: http://www.statistics.gr/en/statistics/-/publication/SCI21/