



PRESS RELEASE

ISSUING OF MOTOR VEHICLE LICENSES: FEBRUARY 2022

The Hellenic Statistical Authority announces that in February 2022, 18,521 road motor cars (both new and used from abroad) were put into circulation for the first time, recording a 37.6% increase compared with the corresponding month of 2021 when the number of road motor cars was 13,464. In February 2021, an 18.8% decrease had been observed in comparison with the corresponding month of 2020 (Table 1, Graphs 1,2,3,5). A total number of 9,300 new cars were put into circulation in February 2022 compared with 7,379 in February 2021, recording a 26.0% increase.

The new motorcycles over 50cc (both new and used from abroad) that were put into circulation for the first time in February 2022 amounted to 3,571, against 2,514 in 2021, thus recording a 42.0% increase. In February 2021, no considerable change had been observed in comparison with the corresponding month of 2020 (Table 1, Graph 4). Out of the above motorcycles 3,185 were new, while the corresponding figure in February 2021 was 2,233, recording a 42.6% increase.

During the period January - February 2022, 32,565 road motor cars (both new and used from abroad) were put into circulation for the first time, representing an increase of 10.6% compared to the corresponding period of 2021 when the number of road motor cars was 29,447. During the period January - February 2021 a decrease of 24.4% had been observed in comparison with the corresponding period of 2020 (Table 3, Graphs 6,7). Out of the above number of road motor cars that were put into circulation, from January to February 2022, 15,357 were new, while the corresponding number during the respective period of 2021 was 15,857, recording a decrease of 3.2%.

During the period January - February 2022 the circulation of new motorcycles over 50cc (both new and used from abroad) amounted to 5,902 against 4,471 in 2021, thus representing a 32.0% increase. A decrease of 10.9% had been observed during the period January - February 2021 in comparison with the corresponding period of 2020 (Table 3, Graphs 6,7). A total number of 5,277 new motorcycles were put into circulation, from January to February 2022, compared with 3,937 during the corresponding period of 2021, recording a 34.0% increase.

Information on methodological issues:

Sectoral Statistics Division

Transport Statistics Section

Pota Tzortzi, Konstantinos Menexes

Tel: +30 213 135 2187, +30 213 135 3055

[e-mail: p.tzortzi@statistics.gr](mailto:p.tzortzi@statistics.gr), k.menexes@statistics.gr

Information for data provision:

Tel: +30 213 135 2022

[e-mail: data.dissem@statistics.gr](mailto:data.dissem@statistics.gr)

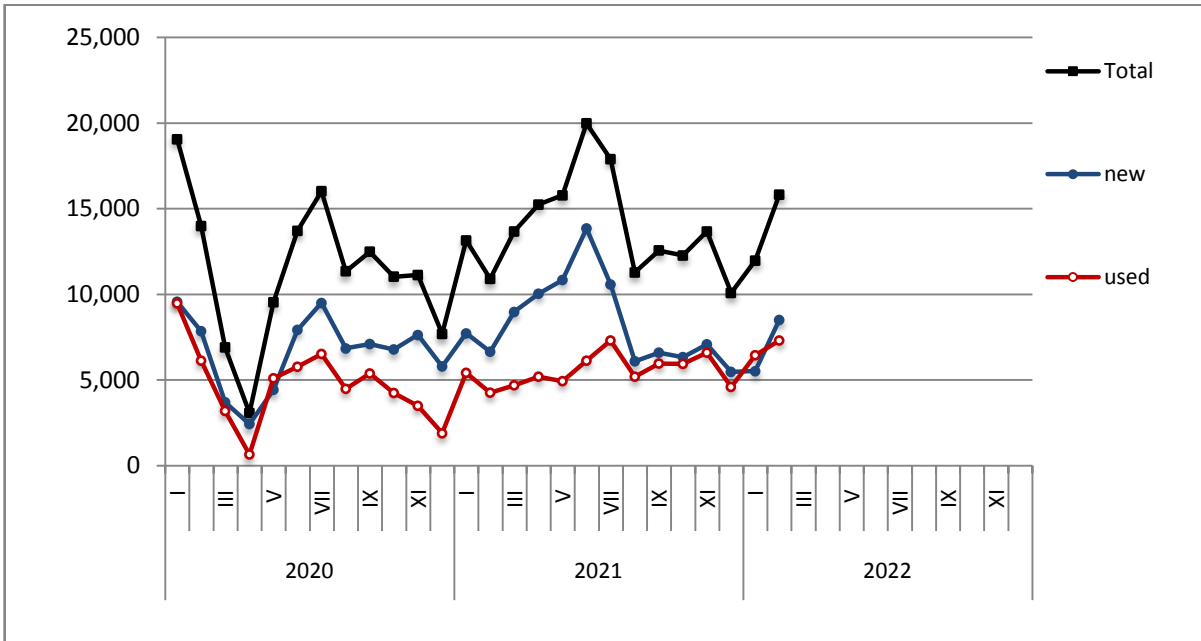
Table 1. Road motor vehicles, both new and used, put into circulation for the first time in Greece: February 2020 - 2022

Category of Road Motor Vehicles	February									Change (%)					
	2020			2021			2022			2021/2020			2022/2021		
	Total	New	Used	Total	New	Used	Total	New	Used	Total	New	Used	Total	New	Used
Greece, total															
Road Motor Vehicles,total	19,104	10,784	8,320	15,978	9,612	6,366	22,092	12,485	9,607	-16.4%	-10.9%	-23.5%	38.3%	29.9%	50.9%
1. Road motor cars	16,589	8,520	8,069	13,464	7,379	6,085	18,521	9,300	9,221	-18.8%	-13.4%	-24.6%	37.6%	26.0%	51.5%
Passenger Cars	13,994	7,854	6,140	10,913	6,652	4,261	15,820	8,502	7,318	-22.0%	-15.3%	-30.6%	45.0%	27.8%	71.7%
Buses	166	26	140	77	14	63	88	13	75	-53.6%	-46.2%	-55.0%	14.3%	-7.1%	19.0%
Lorries	2,429	640	1,789	2,474	713	1,761	2,613	785	1,828	1.9%	11.4%	-1.6%	5.6%	10.1%	3.8%
2. Motorcycles > 50 cc	2,515	2,264	251	2,514	2,233	281	3,571	3,185	386	0.0%	-1.4%	12.0%	42.0%	42.6%	37.4%
Prefecture of Attica															
Road Motor Vehicles,total	9,495	6,824	2,671	8,398	6,103	2,295	12,236	8,187	4,049	-11.6%	-10.6%	-14.1%	45.7%	34.1%	76.4%
1. Road motor cars	8,095	5,491	2,604	7,044	4,835	2,209	10,303	6,433	3,870	-13.0%	-11.9%	-15.2%	46.3%	33.1%	75.2%
Passenger Cars	7,292	5,124	2,168	6,166	4,428	1,738	9,201	5,931	3,270	-15.4%	-13.6%	-19.8%	49.2%	33.9%	88.1%
Buses	53	12	41	26	9	17	42	7	35	-50.9%	-25.0%	-58.5%	61.5%	-22.2%	105.9%
Lorries	750	355	395	852	398	454	1,060	495	565	13.6%	12.1%	14.9%	24.4%	24.4%	24.4%
2. Motorcycles > 50 cc	1,400	1,333	67	1,354	1,268	86	1,933	1,754	179	-3.3%	-4.9%	28.4%	42.8%	38.3%	108.1%

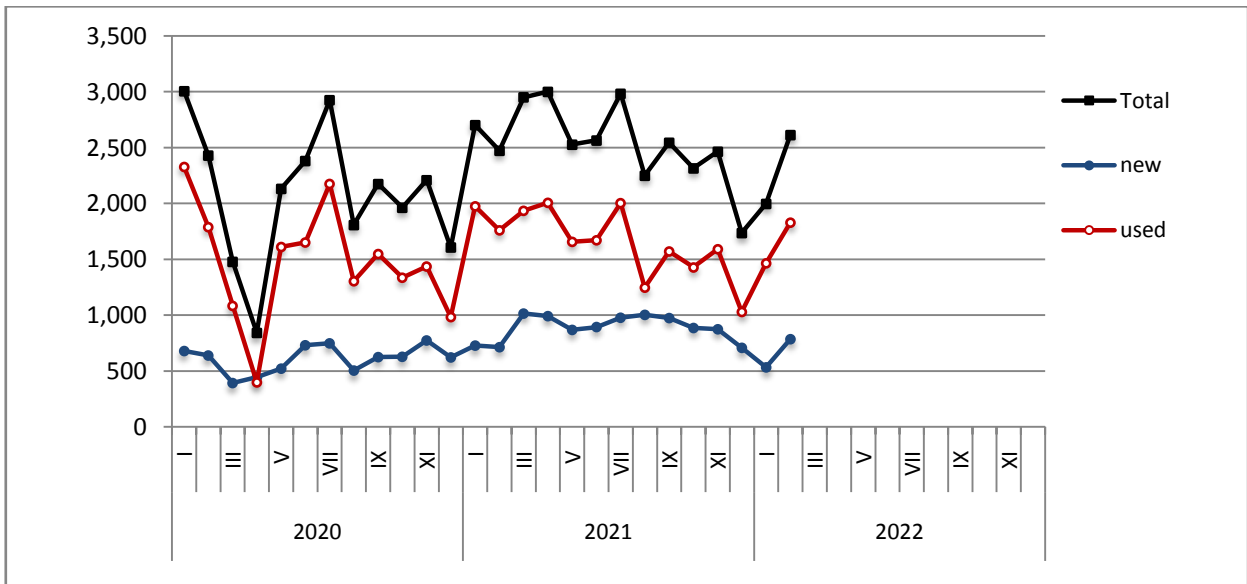
Table 2. Road motor vehicles, both new and used, put into circulation for the first time in Greece: March 2020 – February 2022

Category of Road Motor Vehicles	Average Mar. 2020 - Feb. 2021			Average Mar. 2021 - Feb. 2022			Change (%)		
							Average Mar. 2021 - Feb. 2022 / Average Mar. 2020 - Feb. 2021		
	Total	New	Used	Total	New	Used	Total	New	Used
Greece, total									
Road Motor Vehicles,total	15,924	9,924	6,000	20,993	13,053	7,940	31.8%	31.5%	32.3%
1. Road motor cars	12,756	7,019	5,737	16,806	9,238	7,568	31.7%	31.6%	31.9%
Passenger Cars	10,585	6,379	4,206	14,192	8,326	5,866	34.1%	30.5%	39.5%
Buses	113	21	92	118	36	82	4.4%	71.4%	-10.9%
Lorries	2,058	619	1,439	2,496	876	1,620	21.3%	41.5%	12.6%
2. Motorcycles > 50 cc	3,168	2,905	263	4,187	3,815	372	32.2%	31.3%	41.4%

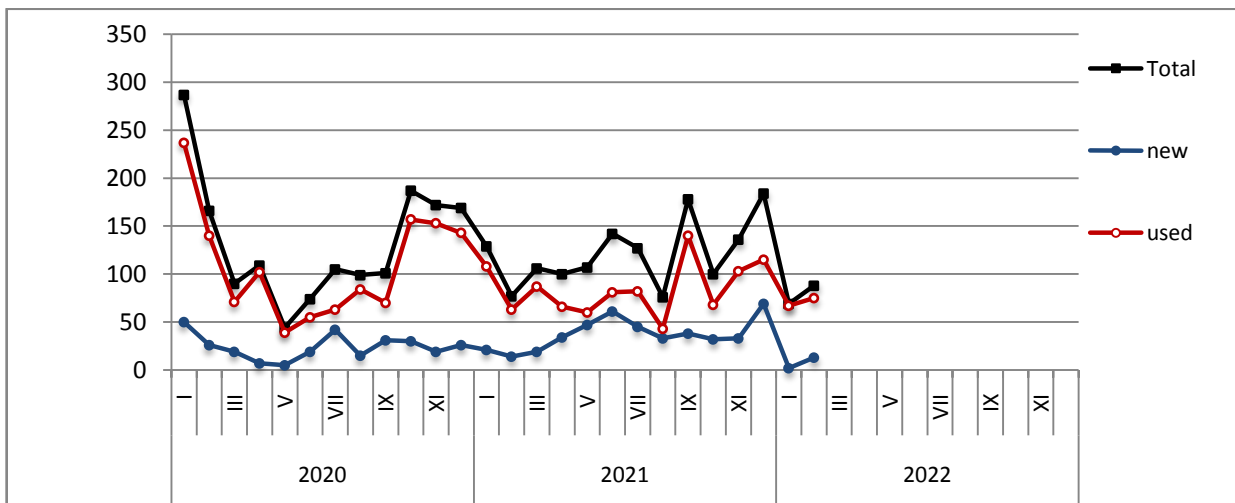
Graph 1: Passenger Cars (January 2020 – February 2022)



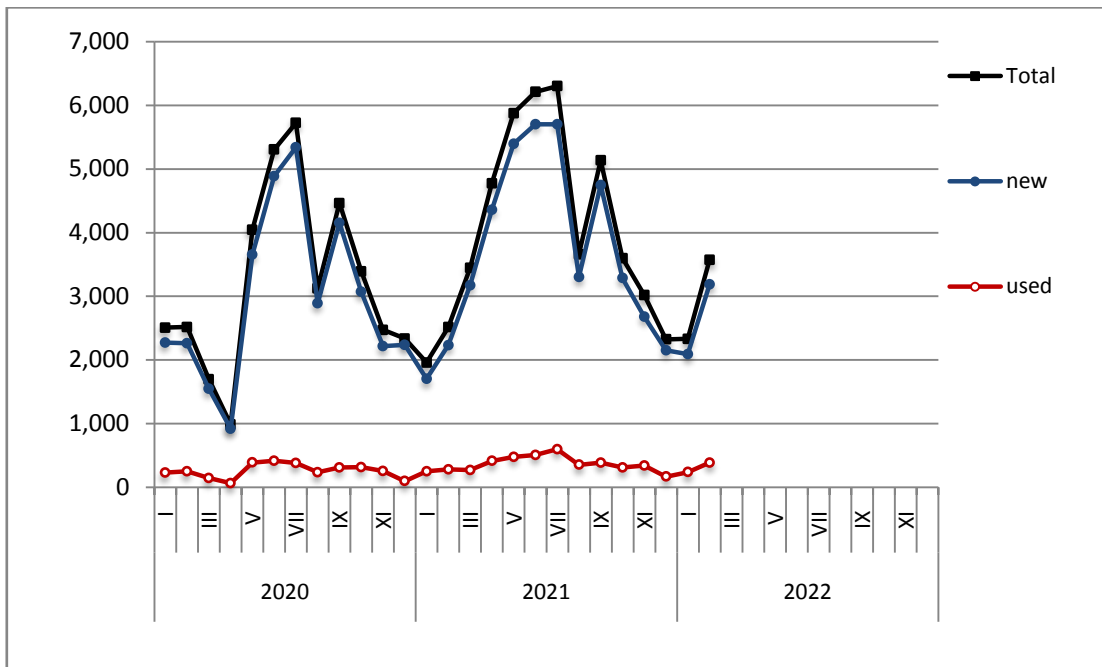
Graph 2: Lorries (January 2020 – February 2022)



Graph 3: Buses (January 2020 – February 2022)



Graph 4: Motorcycles (January 2020 – February 2022)



Graph 5: New Registrations of Motor Vehicles (February 2022)

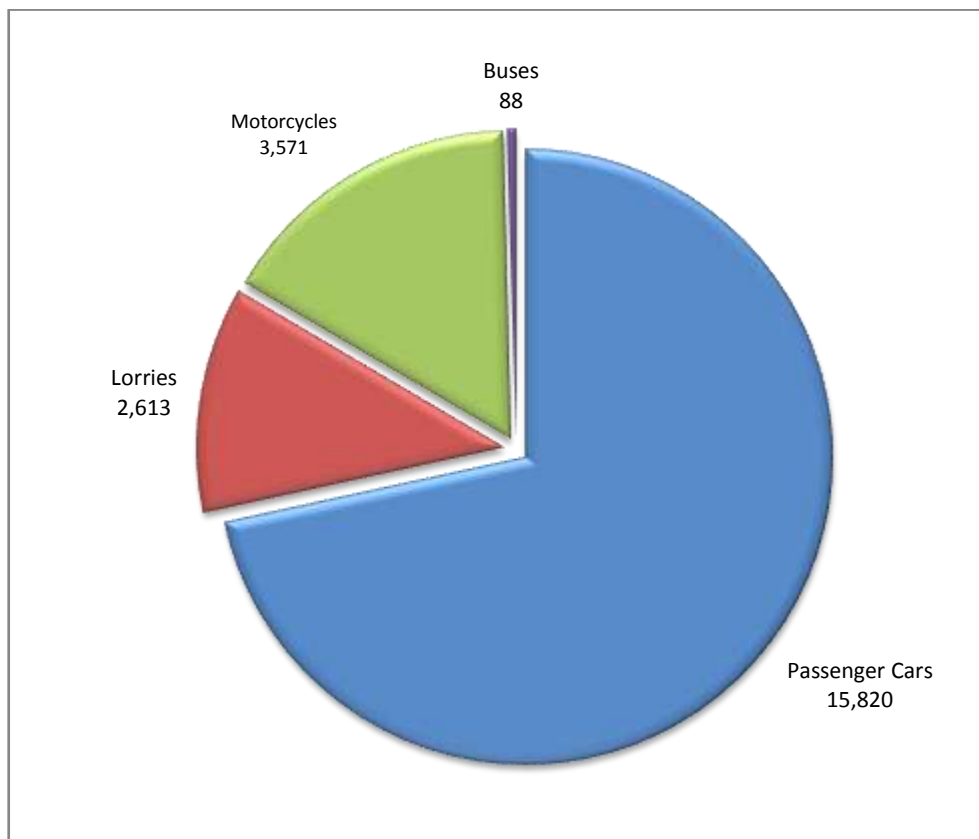
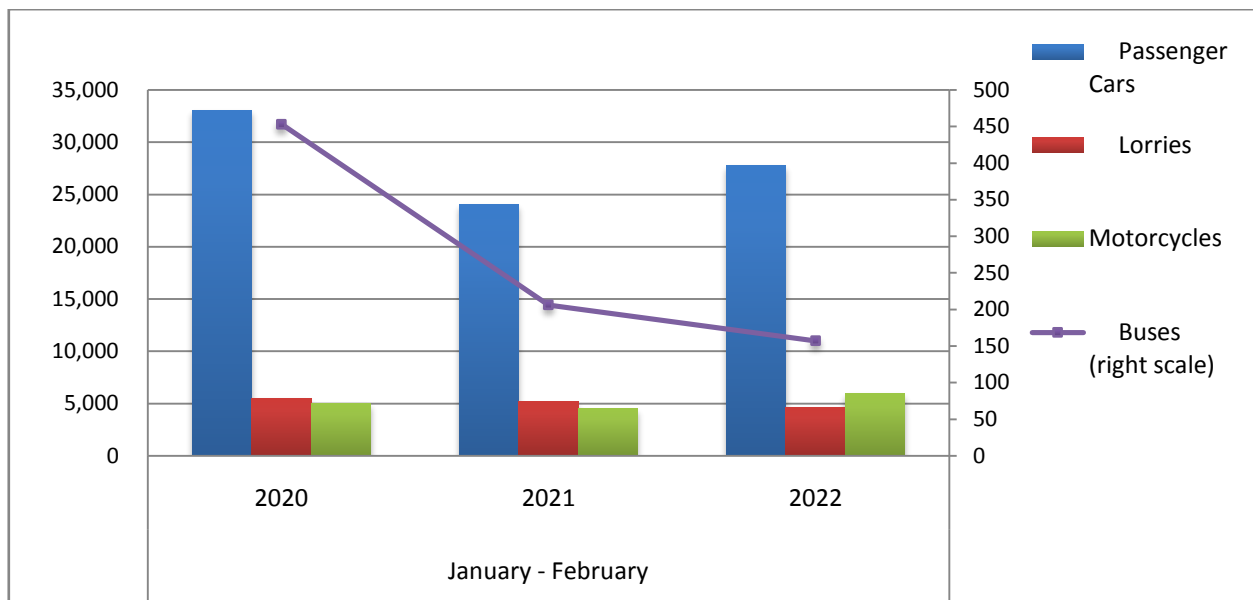


Table 3. Road motor vehicles, both new and used, put into circulation for the first time in Greece: January - February, years 2020 till 2022															
Category of Road Motor Vehicles	January - February									Change (%)					
	2020			2021			2022			2021/2020			2022/2021		
	Total	New	Used	Total	New	Used	Total	New	Used	Total	New	Used	Total	New	Used
Greece, total															
Road Motor Vehicles, total	43,964	23,361	20,603	33,918	19,794	14,124	38,467	20,634	17,833	-22.9%	-15.3%	-31.4%	13.4%	4.2%	26.3%
1. Road motor cars	38,944	18,823	20,121	29,447	15,857	13,590	32,565	15,357	17,208	-24.4%	-15.8%	-32.5%	10.6%	-3.2%	26.6%
Passenger Cars	33,055	17,428	15,627	24,064	14,381	9,683	27,797	14,024	13,773	-27.2%	-17.5%	-38.0%	15.5%	-2.5%	42.2%
Buses	453	76	377	206	35	171	157	15	142	-54.5%	-53.9%	-54.6%	-23.8%	-57.1%	-17.0%
Lorries	5,436	1,319	4,117	5,177	1,441	3,736	4,611	1,318	3,293	-4.8%	9.2%	-9.3%	-10.9%	-8.5%	-11.9%
2. Motorcycles > 50 cc	5,020	4,538	482	4,471	3,937	534	5,902	5,277	625	-10.9%	-13.2%	10.8%	32.0%	34.0%	17.0%
Prefecture of Attica															
Road Motor Vehicles, total	20,754	14,555	6,199	17,815	12,758	5,057	19,823	13,319	6,504	-14.2%	-12.3%	-18.4%	11.3%	4.4%	28.6%
1. Road motor cars	17,959	11,897	6,062	15,182	10,289	4,893	16,650	10,399	6,251	-15.5%	-13.5%	-19.3%	9.7%	1.1%	27.8%
Passenger Cars	16,247	11,185	5,062	13,345	9,485	3,860	14,974	9,363	5,611	-17.9%	-15.2%	-23.7%	12.2%	-1.3%	45.4%
Buses	169	47	122	56	20	36	63	8	55	-66.9%	-57.4%	-70.5%	12.5%	-60.0%	52.8%
Lorries	1,543	665	878	1,781	784	997	1,613	1,028	585	15.4%	17.9%	13.6%	-9.4%	31.1%	-41.3%
2. Motorcycles > 50 cc	2,795	2,658	137	2,633	2,469	164	3,173	2,920	253	-5.8%	-7.1%	19.7%	20.5%	18.3%	54.3%

Graph 6. New Motor Vehicles Circulation Licenses: January–February, years 2020 till 2022



Graph 7. New Registrations of Motor Vehicles: January–February 2022

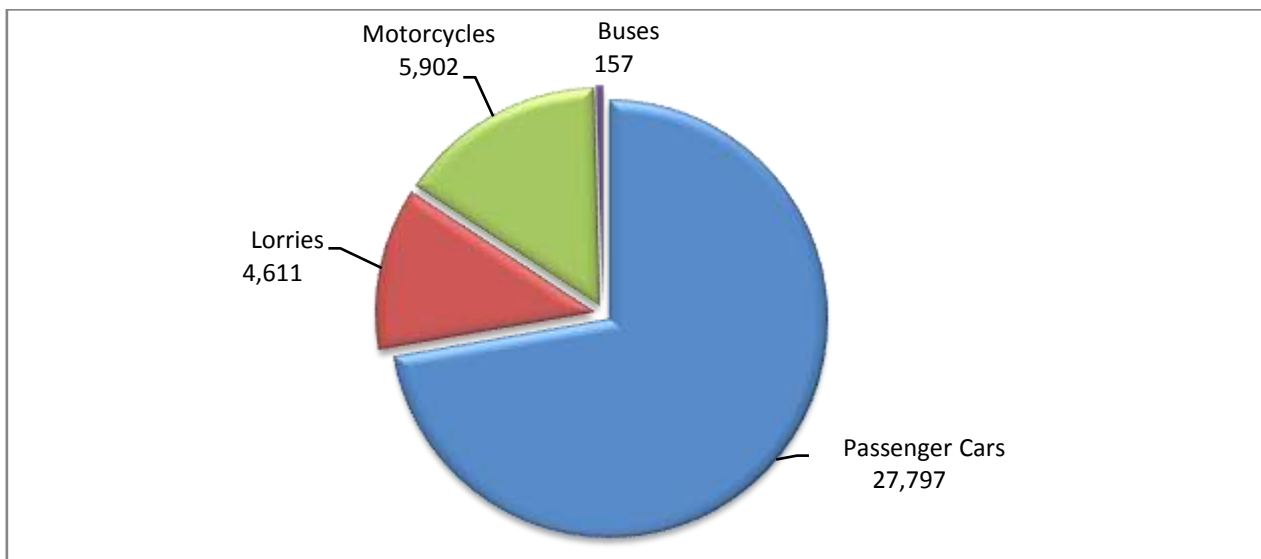


Table 4
Sales of new and used passenger cars by make: February 2022 and January - February 2022

Make	Passenger cars			
	February		January - February	
	new	used	new	used
ALFA ROMEO	6	72	15	138
ASTON MARTIN	-	1	-	1
AUDI	230	147	463	262
BENTLEY	1	1	1	1
BMW	438	190	653	356
CADILLAC	-	1	-	2
CAPRON	-	-	-	1
CARTHAGO	-	-	1	-
CHEVROLET	-	49	-	103
CHRYSLER	-	-	-	4
CITROEN	100	266	176	470
CITROEN / DS	291	9	467	17
CUPRA	40	1	60	1
DACIA	225	179	544	340
DAIHATSU	-	2	-	5
DETHLEFFS	-	-	-	1
DS	34	-	49	1
ETRUSCO	-	-	1	-
FERRARI	-	3	-	5
FIAT	276	385	339	705
FORD	449	448	512	879
HOBBY WOHNWAGEN	-	-	-	1
HONDA	24	55	33	119
HYUNDAI	791	731	1,335	1,396
JAGUAR	3	6	4	17
JEEP	279	32	547	55
KIA	412	135	560	278
KNAUS	-	-	-	3
LADA	-	-	-	1
LAMBORGHINI	1	2	1	4
LANCIA	-	9	-	16
LAND ROVER	57	55	74	96
LES DAUPHINS	-	1	-	1
LEXUS	16	5	25	9
LMC	-	-	-	1
MASERATI	1	-	2	1
MAZDA	53	24	67	55
MERCEDES	274	333	391	584
MERCEDES ¹	1	-	3	-
MINI	179	47	321	81
MITSUBISHI	57	94	57	154
NISSAN	154	535	385	1,053
NISSAN ¹	-	-	6	-
OPEL	636	467	1,173	933
PEUGEOT	540	412	847	735
PEUGEOT ²	2	-	23	-
PORSCHE	18	42	27	69

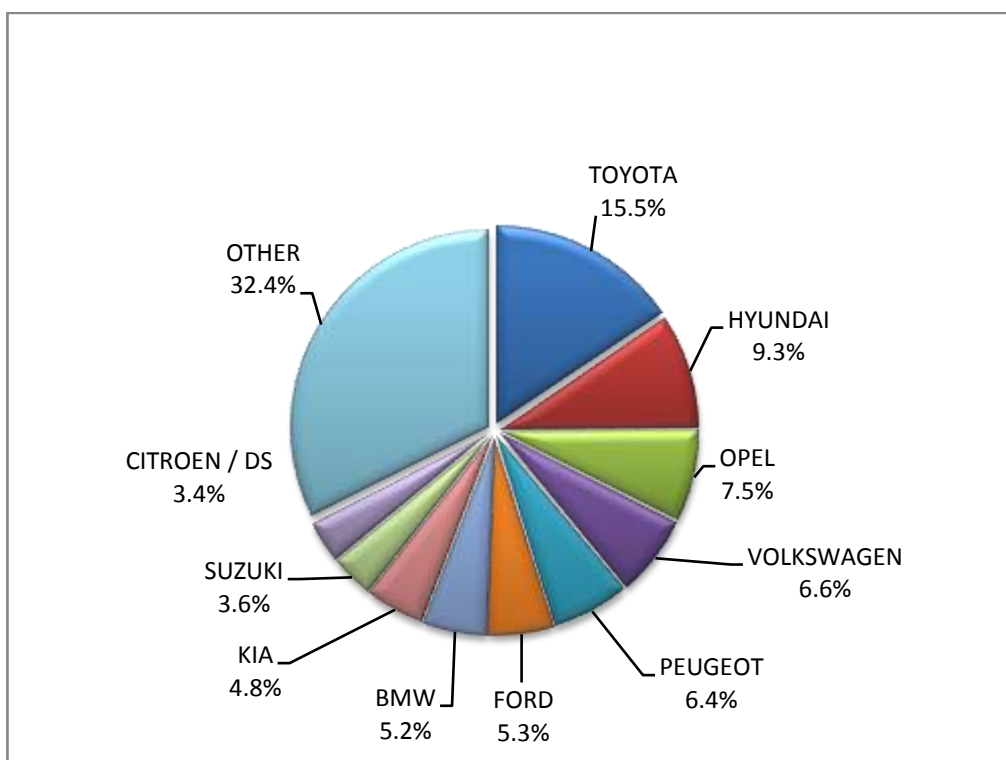
Table 4 (cont)
Sales of new and used passenger cars by make: February 2022 and January - February 2022

Make	Passenger cars			
	February		January - February	
	new	used	new	used
QUATTRO	-	-	-	1
RANGE ROVER	-	2	-	4
RENAULT	281	723	436	1,395
SAAB	-	-	-	2
SEAT	60	92	97	159
SKODA	233	168	429	282
SMART	3	255	13	438
SSANGYONG	-	1	-	2
SUBARU	3	3	9	11
SUN LIVING	-	1	-	1
SUZUKI	303	168	474	339
TESLA	-	3	-	7
TOYOTA	1,322	771	2,319	1,427
TRIGANO	-	1	-	1
VOLKSWAGEN	562	371	844	710
VOLVO	147	20	241	38
WEINSBERG	-	-	-	2
TOTAL	8,502	7,318	14,024	13,773

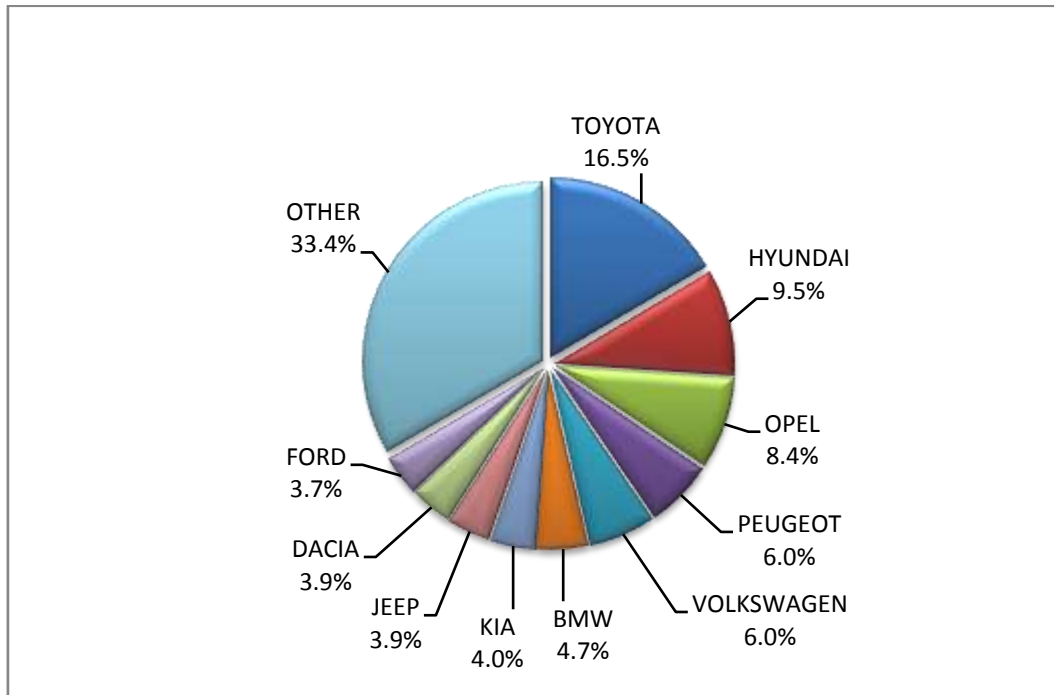
1 : With 2nd/3rd stage manufacturer in Greece.

2 : With 2nd/3rd stage manufacturer abroad.

Graph 8. Sales of new passenger cars by make (February 2022)



Graph 9. Sales of new passenger cars by make (January – February 2022)



**Table 5
Sales of new and used lorries by make: February 2022 and January - February 2022**

Make	Lorries			
	February		January - February	
	new	used	new	used
ASIA MOTOR	-	1	-	1
CITROEN	54	58	81	100
DACIA	-	8	-	13
DAF	-	58	-	102
DAF ¹	7	1	10	1
DAIHATSU	-	2	-	2
DODGE	-	1	-	3
FCA US LLC	-	-	-	1
FIAT	85	172	172	292
FIAT-IVECO	-	4	-	5
FORD	104	220	143	386
FORD ¹	7	-	10	-
HYUNDAI	-	3	-	3
ISUZU	9	14	16	27
ISUZU ¹	-	-	1	-
IVECO	2	28	2	51
IVECO ¹	1	-	1	-
IVECO MAGIRUS	-	8	-	8
JEEP	26	1	40	2
KIA	-	2	-	2

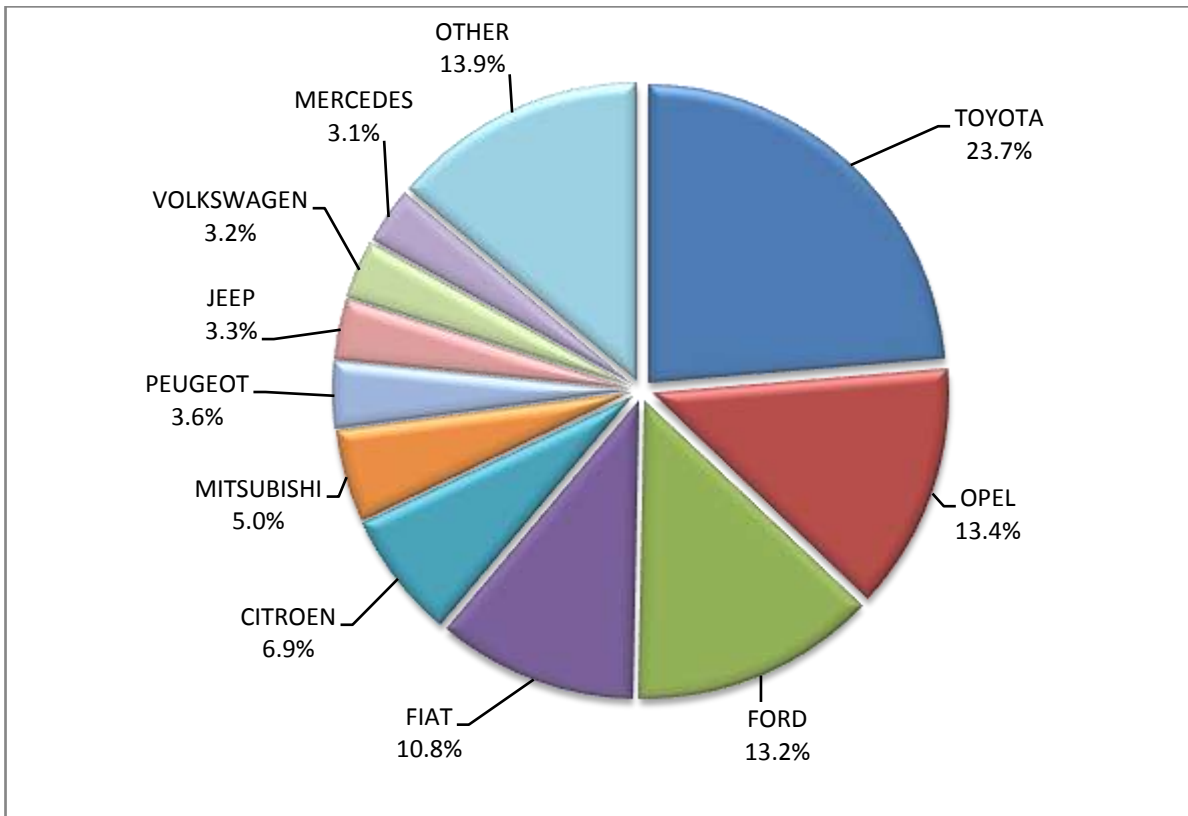
Table 5 (cont)
Sales of new and used lorries by make: February 2022 and January - February 2022

Make	Lorries			
	February		January - February	
	new	used	new	used
KIEFER	-	1	-	1
LAND ROVER	1	3	2	3
LEVC	-	-	2	-
MAN	-	87	-	193
MAN ¹	1	-	1	1
MAXUS, LDV	5	-	5	-
MAZDA	-	5	-	7
MERCEDES	24	425	33	742
MERCEDES ¹	18	-	39	2
MERCEDES ²	-	-	1	-
MITSUBISHI	39	45	87	79
MITSUBISHI ¹	15	-	21	-
NISSAN	2	61	8	111
OPEL	105	91	139	138
OVRIGA	-	1	-	1
PEUGEOT	28	75	87	128
PFAU	-	2	-	2
PIAGGIO	-	3	1	4
PIAGGIO ¹	2	-	4	-
POLARIS	-	-	1	-
RENAULT	9	146	21	256
SCANIA	4	83	4	173
SCANIA ¹	1	1	1	1
SKODA	-	2	-	6
SSANGYONG	-	-	-	2
SUZUKI	19	-	41	-
TERBERG	-	-	-	1
TOYOTA	186	38	285	73
VOLKSWAGEN	25	72	41	137
VOLVO	4	106	15	232
VOLVO ¹	1	-	2	1
VOLVO ²	1	-	1	-
TOTAL	785	1,828	1,318	3,293

1 : With 2nd/3rd stage manufacturer in Greece.

2 : With 2nd/3rd stage manufacturer abroad.

Graph 10. Sales of new lorries by make (February 2022)



Graph 11. Sales of new lorries by make (January –February 2022)

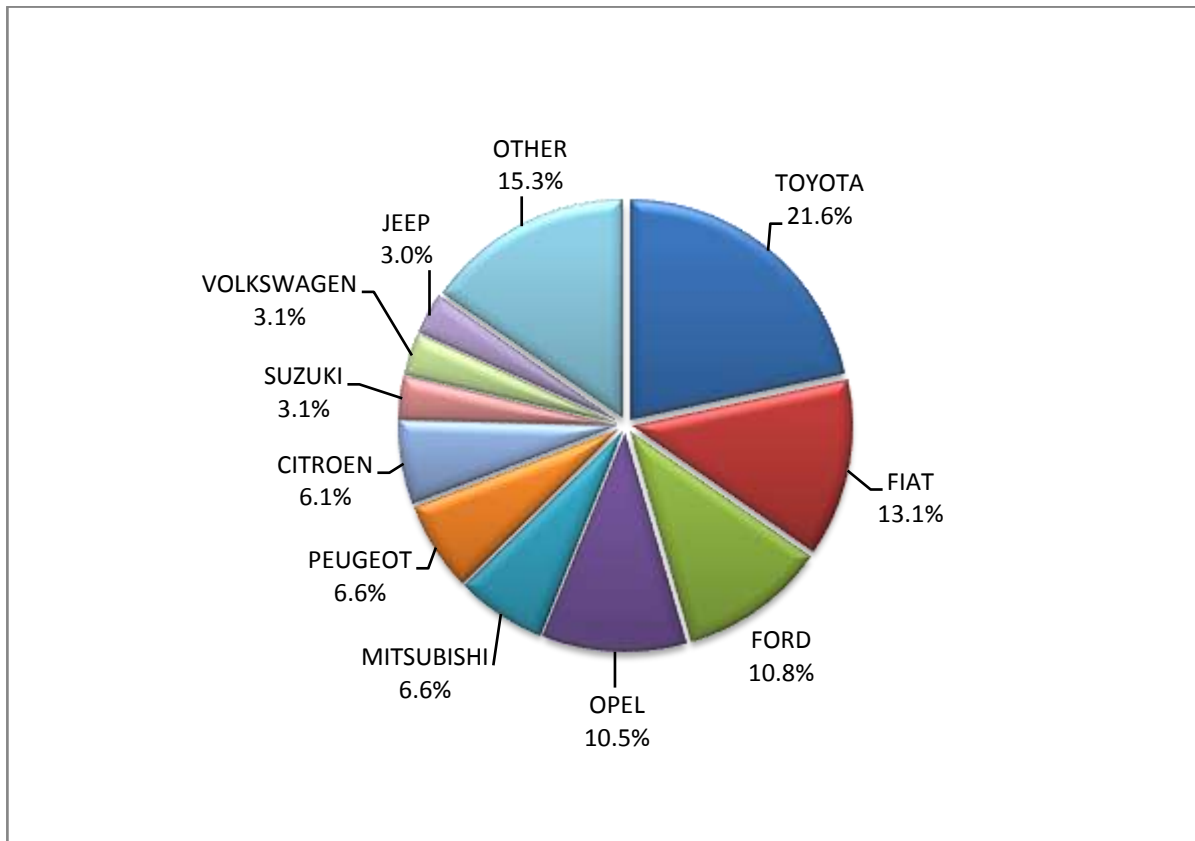


Table 6
Sales of new and used buses by make: February 2022 and January - February 2022

Make	Buses			
	February		January - February	
	new	used	new	used
BOVA	-	6	-	10
EVOBUS	-	1	-	3
FORD	1	1	2	3
GULERYUZ	-	1	-	1
HEULIEZ BUS	-	-	-	1
IVECO	-	2	-	2
MAN	-	4	-	10
MERCEDES	-	49	-	94
MERCEDES ¹	11	-	11	-
MERCEDES ²	1	-	2	-
NEOPLAN	-	1	-	2
OTOKAR	-	1	-	1
SETRA	-	6	-	11
TEMSA	-	1	-	2
VOLVO	-	1	-	1
XIAMEN KING LONG	-	1	-	1
TOTAL	13	75	15	142

1 : With 2nd/3rd stage manufacturer in Greece.

2 : With 2nd/3rd stage manufacturer abroad.

Graph 12. Sales of new buses by make (January –February 2022)

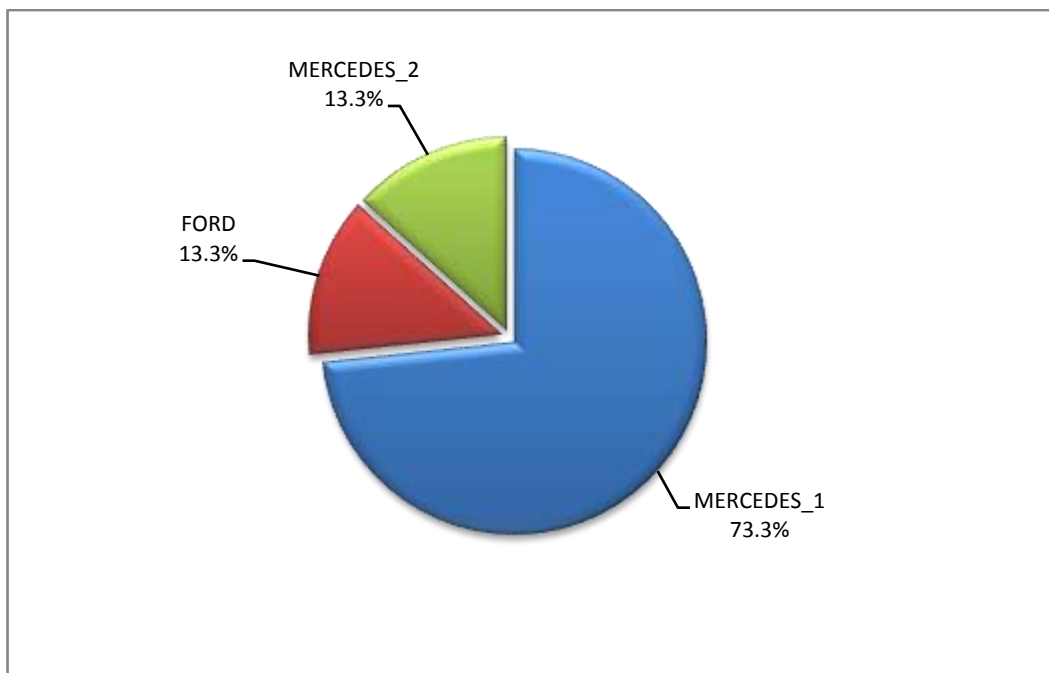


Table 7

Sales of new and used motorcycles by make or manufacturer: February 2022 and January - February 2022

Make	Motorcycles			
	February		January - February	
	new	used	new	used
AIDEA	1	-	1	-
APRILIA	12	3	21	4
ASKOLL	-	1	-	1
BAJAJ	2	1	3	1
BASHAN, AMGroup, AMGroup Bike, DON, IRBIS, WORKER BEAR, Nomik ATV 2	3	-	3	-
BASHAN, AMGroup, AMGroup Bike, DON, RBIS, WORKER BEAR, Nomik ATV 2, APACHI, ISILDAR	-	-	2	-
BENELLI	10	1	21	1
BETA	12	1	22	3
BMW	73	27	117	48
BRIXTON	6	-	19	-
CFMOTO	63	-	88	1
DAYANG, DAYTONA MOTORS, NIPPONIA, DOCKER, WAYEL, SUMCO, VEEROAD, CETUR, RUTEC	10	-	11	-
DAYANG, DAYTONA MOTORS, NIPPONIA, KUBA, VEEROAD, SUMCO, CETUR, RUTEC	72	1	119	1
DAYANG, DAYTONA MOTORS, NIPPONIA, SALCANO	1	-	1	-
DAYANG, DAYTONA MOTORS, NIPPONIA, VEEROAD	177	2	325	2
DAYANG, DAYTONA MOTORS, NIPPONIA, VEEROAD, DOCKER	49	-	112	-
DAYANG, ECOCREMO, ECOOTER, ECOOTOR,AGM, ORCAL, SUMCO	1	-	1	-
DAYANG, NIPPONIA, DAYTONA MOTORS, VEEROAD, SUMCO, DOCKER, MH MOTORCYCLES	2	-	4	-
DAYTONA	9	-	15	-
DUCATI	11	11	20	15
EFUN, ZAP	10	-	11	-
EMBUGGY, VINTAGE, EVANGEL	1	-	1	-
FANTIC MOTOR	3	-	4	-
FD MOTORS, FASPIDER, Daytona Motors, EVO Motors, Veeroad	4	-	5	-
GAS GAS	5	1	6	1
GENERIC, EXPLORER, MALANCA, KSR Moto Austria, Motron Motorrad	6	-	10	-
HARLEY DAVIDSON	-	9	-	10
HONDA	797	82	1,326	131
HORWIN	2	-	2	-
HSUN, HISUN, APACHI, Mx, MASAI, HYTRACK, TRAPPER, PUMAREX, GEON, ASYAMOTOR, DAYTONA MOTORS, KRAL	-	-	1	-
HUSQVARNA	8	3	18	7
IANYING, TYM, XINBEN, TEYIN, RIYA,ONGYUNDA, SANBEN, ALFA, Senzo, La Souris, TCB, KENTOYA	1	-	2	-
INDIAN MOTORCYCLE	2	1	2	2
JCADI, TILGREEN, Grupo Invicta MOTOR, e-broh, FAURO	-	-	1	-
JIANSHE	-	1	-	1
JIAYUAN	2	-	4	1
KAWASAKI	3	9	5	14
KTM	40	12	69	27
KWANG YANG	-	1	-	2
KYMCO	76	48	137	81
LAMBRETTA	4	-	5	-
LIFAN, HONLEI, QIPAI, SKYGO, GTS, PINK, Daytona MOTORS	-	-	1	-
LINHAI	-	1	-	1
LONCIN, KUBA, RKS, ITALIKA, SUNRACE, SKY, MALAGUTI, SUPERBIKE, ROCKET, NOVELBAT, TIGREMOTO, GREEN, TRIDIAMOND	3	-	3	-

Table 7 (cont)

Sales of new and used motorcycles by make or manufacturer: February 2022 and January - February 2022

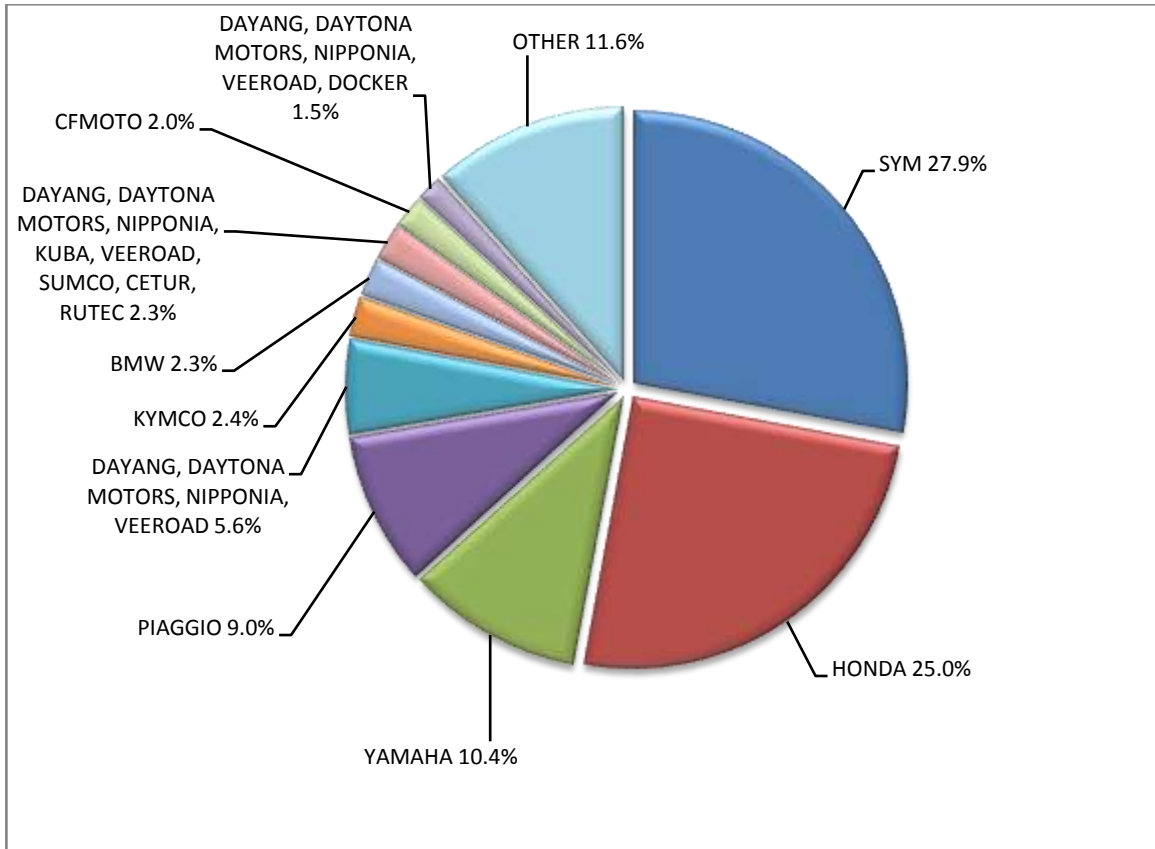
Make	Motorcycles			
	February		January - February	
	new	used	new	used
LONCIN, KUBA, RKS, ITALIKA, VOGÉ, SUNRACE, SKY, MALAGUTI, ROCKET, SUPERBIKE, NOVELBAT, TRIDIAMOND	5	-	17	-
LONCIN, VOGÉ, KUBA, RKS, ITALIKA, SUNRACE, SKY, MALAGUTI, SUPERBIKE, ROCKET, NOVELBAT, TIGREMOTO, GREEN	3	-	5	-
LONCIN,VOGE,KUBA,RKS,ITALIKA,SUNRACE,SKY,MALAGUTI,SUPERBIKE	-	-	2	-
LONGJIA, ORCAL, NECO	13	-	16	-
LONGJIA, ORCAL, NECO, VGA, Gemini	4	-	4	-
LONGJIA, ORCAL, TNT MOTOR, BEELINE, VGA, ITALJET, GEMINI, lexmoto, Jahanro, italo, NECO	-	-	1	-
MACBOR,RVM,COLOVE,ORCAL,DAYTONA MOTORS,ZF-KY,Lexmoto,OVER BIKES,YUKI, AJS	6	-	25	-
MELEX	-	-	1	-
MGK HM	6	-	12	-
MOTO GUZZI	5	-	11	-
MOTRON MOTORRAD	-	-	1	-
MV AGUSTA	4	-	4	1
NEV, N, FLYBO, JM, MALON, Herox, Baoya, ZILENT	-	1	-	1
NIU, NUUV	6	-	8	-
PEUGEOT	1	3	2	5
PIAGGIO	288	42	563	67
POLARIS	2	-	2	-
QJ	-	1	-	2
QJ, QJIANG, KEEWAY, LEONE	1	-	1	-
QJ, QJIANG, KEEWAY, LEONE, KUBA, RKS, tell,VENGO	1	-	4	-
QJ, QJIANG, KEEWAY, LEONE, RKS, BENELLI, EMPIRE KEEWAY, KUBA	1	-	3	-
QJ, QJIANG, KEEWAY, LEONE, tell, KUBA, RKS, BENELLI, VENGO	-	-	1	-
RAY ELECTRIC MOTORS	1	-	1	-
RENLI	1	-	1	-
ROYAL ENFIELD	6	-	18	-
Royalloy,Royal Alloy,RA,SCOMADI,VALENTINO,VALENTINO MOTORI	3	-	4	-
RVM, MACBOR, COLOVE, ORCAL, DAYTONA MOTORS	1	-	1	-
SAKURA, GOLDEN LION, ARTISAN, Fauro, ETALIAN, Viverra, Varaneo, Kito, E-mio	1	-	2	-
SAN YANG	-	1	-	1
SEGWAY	-	-	1	-
SHANYANG, ATLAS PANTHER, YAMAZUKI MOTO, MOTORKING, Hirlee, XB	2	-	7	-
SHARE'NGO ,ZHIDOU,ZD	-	-	1	-
SHENGWO NEW ENERGY, YUKI	-	-	11	-
SHERCO	3	2	3	2
SILENCE, SCUTUM, ETRIX	5	-	6	-
SI-ZWEIRAD	-	1	-	1
SKYTEAM, SACIN, CSR, METALCO, SOKUDO, BAZUKA, MINICO, MOTOSBASI, MOTOS BORDOY, SUMKO, ROXON, MONKEY BIKES	1	1	3	2
SUZUKI	39	12	54	29
SWM	1	-	1	-
SYM	889	13	1,290	22
TARO, JUNAK, BARTON MOTORS ,ORCAL, Lexmoto	10	-	13	-
TARO, JUNAK, BARTON MOTORS, ORCAL, Lexmoto, MITT, NECO, WOTTAN, MAGPOWER, ADAMOTO, MAXON, MAX-ON	2	-	3	-
TAYO, HAOJIANG, ZHONGYU, THUMP, THUMPSTAR, KIDEN, ZONTES, Junak, SENKE, TANNY, TYAN, ROMET	4	-	11	-

Table 7 (cont)

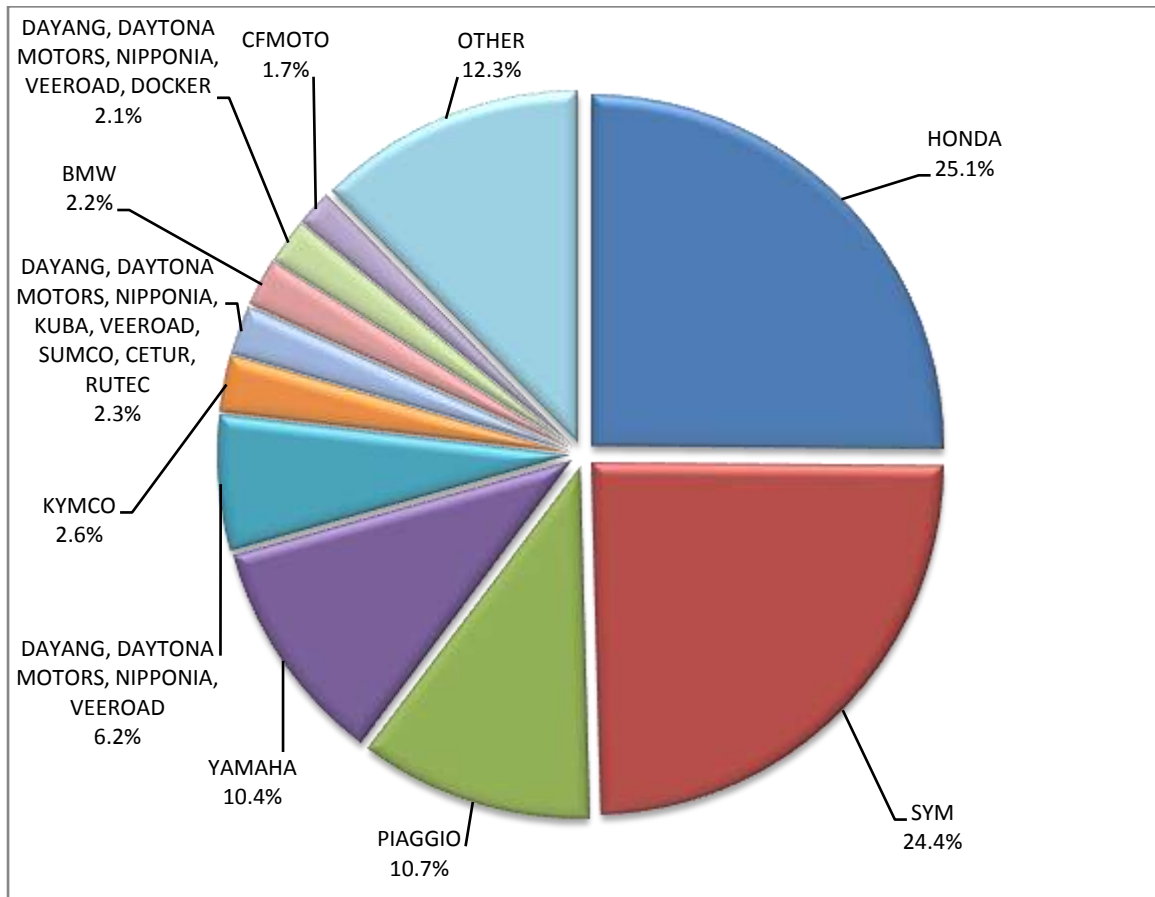
Sales of new and used motorcycles by make or manufacturer: February 2022 and January - February 2022

Make	Motorcycles			
	February		January - February	
	new	used	new	used
TAYO, HAOJIANG, ZHONGYU, THUMP, THUMPSTAR, KIDEN, ZONTES, Junak, SENKE, TANNY, TYAN, ROMET, ROMET MOTORS	25	2	45	2
TRIUMPH	22	5	30	5
VMOTO-SOCO, E-MAX, VMOTO, SUPER SOCO	3	-	3	-
VOLTA, VTA, REVOLT	2	-	3	-
WONJAN, SAMADA	-	-	1	-
XINRI, SUNRA ,APACHI, ISILDAR, ISILDAR APACHI, Wayscral, KRAL	2	-	3	-
YAMAHA	331	86	550	130
YASAN MOTOR, Kito	1	-	1	-
YINGANG, BENYI, ROMET MOTORS, YUKI, ROUTER, MOTORAN, DAYTONA MOTORS, M1NSK, HAMACHI, KUBA, MONDIAL	-	-	2	-
ZERO MOTORCYCLES	2	-	2	-
ZHONGNENG, ZNEN, AGM, AJS, YUKI, COLIBRI	-	-	1	-
ZONGSHEN, ZIP STAR, Lexmoto, ICONE, VORTEX, M1NSK, MACBOR, MONDIAL, ROMET MOTORS	-	-	2	-
ZONGSHEN, ZIP STAR, Lexmoto, ICONE, VORTEX, M1NSK, MACBOR, MONDIAL, ROMET MOTORS , SINNIS, SPARKSTER, OVER BIKES	-	-	1	-
ZONGSHEN, ZIPSTAR, ICONE, JUNAK, Lexmoto, MH Motorcycles, MINSK, MONDIAL, ROMET MOTORS, SINNIS, SPARKSTER	1	-	1	-
TOTAL	3,185	386	5,277	625

Graph 13. Sales of new motorcycles (February 2022)



Graph 14. Sales of new motorcycles (January –February 2022)



EXPLANATORY NOTES

Survey on the issuing of new road motor vehicle circulation licenses	The survey on the issuing of new motor vehicle circulation licenses is a census survey. The released data give information, at country level, on the brand and type of the motor vehicle, as well as whether it is new or used. The survey does not include vehicles that move on rails, trolley busses, agricultural tractors and machinery. In addition, the following are excluded: all motor vehicles of the Armed Forces, Police, Fire Brigade, State Services, Diplomatic Corps, Foreign Missions, and Invalids of Wars, as well as motorcycles with a cylinder capacity less than 50 cc.
Legal basis	Law 3832/2010
ReferencePeriod	February 2022
Coverage	The production of monthly data is based on the registers held by the Ministry of Infrastructure, Transport and Networks, which records all the monthly changes observed in the vehicle registration licenses at country level.
Definitions	<p>Road motor vehicle is any vehicle that, irrespective of the number of wheels, is moved by an engine and is designed to transport persons or cargo or both of them, either they are on the same single vehicle or on a trailer carried by the main motor vehicle.</p> <p>New road motor vehicle is any motor vehicle that is registered for the first time in Greece during the reference month and has not been put into circulation in any other country.</p> <p>Used motor vehicle is any motor vehicle that is registered for the first time in Greece and has been imported as a used one from abroad</p> <p>Passenger motor vehicle: it is a motor vehicle designed to carry mostly people, having no more than 9 seats, including the driver's seat.</p> <p>Bus: it is a motor vehicle, which is designed to carry mostly people, having more than 10 seats, including the driver's seat. In the corresponding tables of this Press Release, this category also includes articulated buses.</p> <p>Lorry: it is motor vehicle designed to carry mostly cargo. In the corresponding tables of this Press Release, this category also includes tractors, tow trucks, articulated tractors, and trucks with trailers.</p> <p>Motorcycle: any two-wheeled motor vehicle, with or without sidecar, with maximum authorized design speed over 45 km/h, or in case it is powered by a combustion engine, with a cylinder capacity of 50 cc or over. In the corresponding tables of this Press Release, this category also includes the three-wheeled motor vehicles – motor tricycles.</p> <p>Tricycle motor vehicle: it is a motor vehicle with three symmetrical wheels with maximum authorized design speed over 45 km/h, or in case it is powered by a combustion engine, with a cylinder capacity over the 50 cc. This category also includes four-wheel vehicles, except the light four-wheel motorcycles, whose empty vehicle tare (excluding the weight of the fuel or mixture of fuel-oil or the weight of the batteries for electric cars) is up to 400 kg in the case the vehicle is designed for passenger use or up to 550 kg in case the vehicle is designed to carry cargo and whose engine is up to 15KW.</p>
Methodology	Exhaustive Survey. The primary data derive from the Ministry of Infrastructure, Transport and Networks and are based on the issuing of new circulation licenses as they are registered by the Regional Offices for Transport and Communications.
References	More information (graphs, tables) concerning the survey on the issuing of new motor vehicle circulation licenses are available on the webpage of ELSTAT, www.statistics.gr , under the link http://www.statistics.gr/en/statistics/-/publication/SME24/-