



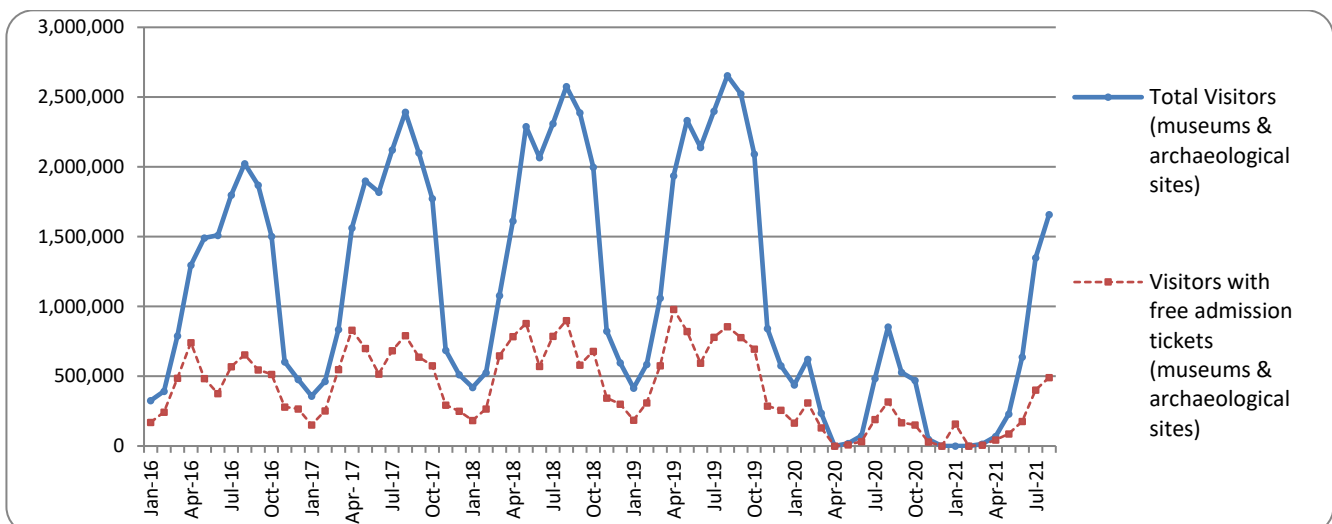
PRESS RELEASE

SURVEY ON MUSEUMS AND ARCHAEOLOGICAL SITES ATTENDANCE AUGUST 2021

The Hellenic Statistical Authority (ELSTAT) announces the results of the *Survey on Museums and Archaeological Sites Attendance* for August 2021. More specifically:

- During August 2021, compared with the corresponding period of August 2020, Museums recorded an 134.7% increase in the number of visitors and an 120.7% increase in the number of free admission visitors as well as an 158.1% increase in their receipts (Table 1).
- In August 2021 compared with the corresponding month of 2020, the number of visitors at Archaeological sites recorded an increase of 82.2%, while an increase of 35.9% was observed in the number of free admission visitors and an increase of 127.3% was observed in the corresponding receipts (Table 1).
- During the eight month period from January to August 2021, compared to the corresponding period of 2020, an increase of 26.0% was observed in the number of visitors of Museums and a decrease of 4.3% was recorded in the number of free admission visitors, while an 108.9% increase was observed in the relevant receipts, given the suspension of operation of Museums, from March 14th until June 16th 2020 and again gradually from November 1st 2020 until May 13th 2021, in the framework of the preventative measures against the Covid-19 pandemic (Table 2).
- As regards Archaeological sites, during the eight month period from January to August 2021, compared to the corresponding period of 2020, an increase of 53.9% was recorded in the number of visitors, while an increase of 9.3% was observed in the number of free admission visitors and an increase of 124.2% was observed in the relevant receipts, given the suspension of operation of Archaeological sites from March 14th until May 17th 2020 and from November 7th 2020 until March 21st 2021 in the framework of the preventative measures against the Covid-19 pandemic (Table 2).

Graph 1: Visitors of Museums and Archaeological sites (January 2016 – August 2021)



Information on methodological issues:

Sectoral Statistics Division
Tourism and Cultural Statistics Section
Head of the Section: Asimina Katri
Tel: +30 213 135 2168
e-mail: a.katri@statistics.gr

Information for data provision:

Tel. +30 213 135 2022, 2308, 2310
e-mail: data.dissem@statistics.gr

**TABLE 1: VISITORS OF MUSEUMS AND ARCHAEOLOGICAL SITES - TOTAL RECEIPTS
(AUGUST 2020 & AUGUST 2021)**

I. NUMBER OF VISITORS			
Museums and Archaeological sites	2020 ⁽²⁾	2021 ⁽²⁾	Change 2021/2020
Total number of visitors (A+B)	854,317	1,659,074	94.2%
A. Museums (C+E)	194,541	456,672	134.7%
Acropolis Museum	46,481	120,819	159.9%
National Archaeological	9,956	43,098	332.9%
Ancient Olympia	5,351	6,552	22.4%
Palace of the Grand Master (Rhodes)	16,195	38,911	140.3%
Herakleion Archaeological (Crete)	16,248	33,204	104.4%
White Tower	7,514	16,520	119.9%
Delphi	6,880	12,713	84.8%
Other museums ⁽³⁾	85,916	184,855	115.2%
B. Archaeological Sites (D+F)	659,776	1,202,402	82.2%
Epidavros ⁽¹⁾	25,571	45,669	78.6%
The Acropolis of Mycenae & Atreus' Treasure	17,912	37,839	111.2%
The Acropolis of Athens	98,100	239,076	143.7%
Sounio	18,378	27,053	47.2%
The Acropolis of Lindos	61,028	87,546	43.5%
Royal Tombs of Vergina	6,679	13,691	105.0%
Ancient Olympia	20,606	30,312	47.1%
Knossos (Crete)	54,568	114,807	110.4%
Phaistos (Crete)	7,776	11,666	50.0%
Ancient Korinthos ⁽¹⁾	5,709	12,033	110.8%
Mystras ⁽¹⁾	9,751	20,591	111.2%
Delphi	14,844	31,288	110.8%
Other archaeological sites ⁽³⁾	318,854	530,831	66.5%
II. VISITORS WHO PAID TICKET			
	2020 ⁽²⁾	2021 ⁽²⁾	Change 2021/2020
Total number of visitors who paid ticket (C+D)	538,160	1,168,436	117.1%
C. Museums ⁽³⁾	122,544	297,776	143.0%
D. Archaeological sites	415,616	870,660	109.5%
III. VISITORS WITH FREE ADMISSION TICKETS			
	2020 ⁽²⁾	2021 ⁽²⁾	Change 2021/2020
Total number of visitors with free admission ticket (E+F)	316,157	490,638	55.2%
E. Museums ⁽³⁾	71,997	158,896	120.7%
F. Archaeological sites	244,160	331,742	35.9%
IV. RECEIPTS (euros)			
	2020 ⁽²⁾	2021 ⁽²⁾	Change 2021/2020
Total Receipts (G+H)	5,583,870	12,998,515	132.8%
G. Museums ⁽³⁾	996,567	2,572,516	158.1%
H. Archaeological sites	4,587,303	10,425,999	127.3%

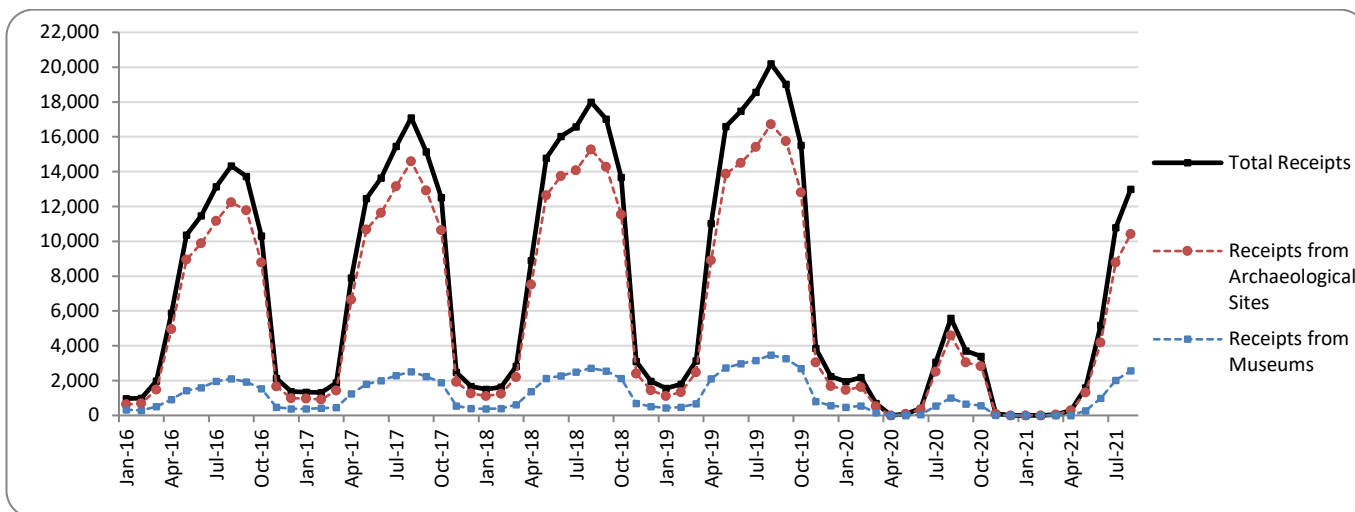
⁽¹⁾ Flat rate ticket, valid both for the museum and the archaeological site.

⁽²⁾ The operation of Museums was suspended from March 14th until June 16th 2020 and again gradually from November 1st 2020 until May 13th 2021. The operation of Archaeological Sites was suspended March 14th until May 17th 2020 and from November 7th 2020 until March 21st 2021, in the framework of the preventative measures against the Covid-19 pandemic.

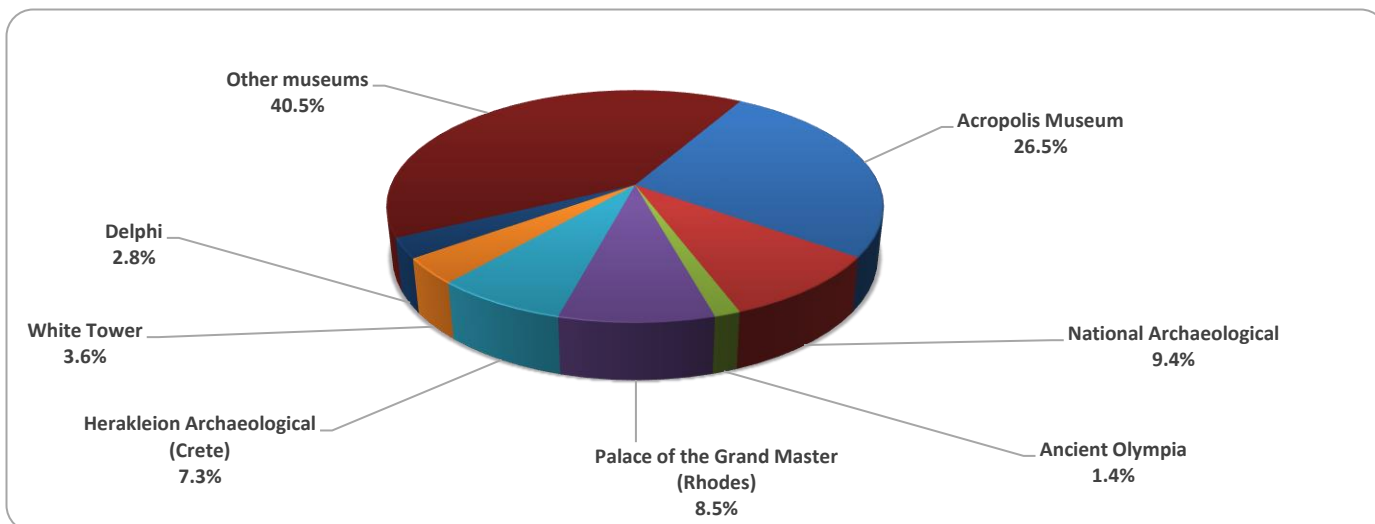
⁽³⁾ Revised data for 2020, due to transmission of additional data from administrative sources.

The following graphs depict the evolution of the receipts of Museums and Archaeological Sites (Graph 2), as well as the number of visitors by Archaeological Sites (Graph 3).

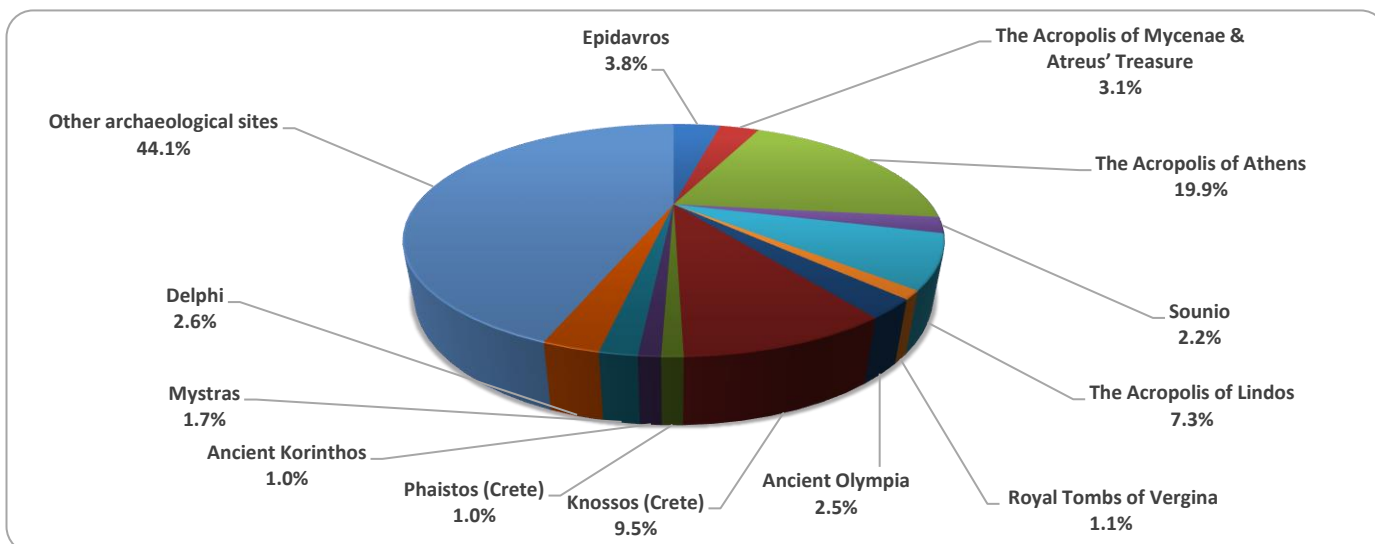
**Graph 2: Receipts from Museums and Archaeological Sites (January 2016 – August 2021)
(in thousand euro)**



Graph 3: Percentage distribution of visitors by Museum, August 2021



Graph 4: Percentage distribution of visitors by Archaeological site, August 2021



**TABLE 2: VISITORS OF MUSEUMS AND ARCHAEOLOGICAL SITES - TOTAL RECEIPTS
(2019, 2020, JANUARY- AUGUST 2020, 2021)**

I. VISITORS					
Museums and Archaeological sites	2019	2020 ⁽²⁾	JANUARY-AUGUST		change
			2020 ⁽²⁾	2021 ⁽²⁾	2021/2020
Total number of visitors (A+B)	19,559,278	3,772,828	2,725,377	3,957,379	45.2%
A. Museums (C+E)	5,895,927	1,100,904	849,973	1,071,033	26.0%
Acropolis Museum	1,755,435	325,969	264,887	283,941	7.2%
National Archaeological	608,876	98,175	77,080	93,764	21.6%
Ancient Olympia	159,348	21,956	16,461	17,107	3.9%
Palace of the Grand Master (Rhodes)	263,958	54,572	29,854	79,323	165.7%
Herakleion Archaeological (Crete)	660,533	63,027	45,094	72,378	60.5%
White Tower	251,760	62,007	50,773	41,091	-19.1%
Delphi	275,993	41,984	33,653	28,684	-14.8%
Other museums ⁽³⁾	1,920,024	433,214	332,171	454,745	36.9%
B. Archaeological Sites (D+F)	13,663,351	2,671,924	1,875,404	2,886,346	53.9%
Epidavros ⁽¹⁾	535,751	103,532	71,421	101,110	41.6%
The Acropolis of Mycenae & Atreus' Treasure	502,619	78,839	60,084	81,670	35.9%
The Acropolis of Athens	3,593,586	620,132	472,620	634,077	34.2%
Sounio	337,544	100,319	73,654	97,234	32.0%
The Acropolis of Lindos	525,757	156,462	95,113	197,669	107.8%
Royal Tombs of Vergina	223,151	37,586	30,112	29,418	-2.3%
Ancient Olympia	457,710	64,759	48,699	75,574	55.2%
Knossos (Crete)	949,192	175,927	113,523	260,246	129.2%
Phaistos (Crete)	121,796	31,885	22,160	25,899	16.9%
Ancient Korinthos ⁽¹⁾	214,023	31,981	23,007	27,852	21.1%
Mystras ⁽¹⁾	147,713	36,352	24,052	44,770	86.1%
Delphi	405,348	75,983	56,916	73,209	28.6%
Other archaeological sites	5,649,161	1,158,167	784,043	1,237,618	57.9%
II. VISITORS WHO PAID TICKET					
	2019	2020 ⁽²⁾	JANUARY-AUGUST		change
			2020 ⁽²⁾	2021 ⁽²⁾	2021/2020
Total number of visitors who paid ticket (C+D)	12,434,987	2,268,397	1,570,975	2,750,434	75.1%
C. Museums ⁽³⁾	3,345,997	605,426	447,473	685,725	53.2%
D. Archaeological sites	9,088,990	1,662,971	1,123,502	2,064,709	83.8%
III. VISITORS WITH FREE ADMISSION TICKETS					
	2019	2020 ⁽²⁾	JANUARY-AUGUST		change
			2020 ⁽²⁾	2021 ⁽²⁾	2021/2020
Total number of visitors with free admission ticket (E+F)	7,124,291	1,504,431	1,154,402	1,206,945	4.6%
E. Museums ⁽³⁾	2,549,930	495,478	402,500	385,308	-4.3%
F. Archaeological sites	4,574,361	1,008,953	751,902	821,637	9.3%
IV. RECEIPTS (euros)					
	2019	2020 ⁽²⁾	JANUARY-AUGUST		change
			2020 ⁽²⁾	2021 ⁽²⁾	2021/2020
Total Receipts (G+H)	130,938,846	21,176,036	13,967,007	30,884,834	121.1%
G. Museums ⁽³⁾	23,343,026	4,047,401	2,797,926	5,844,932	108.9%
H. Archaeological sites	107,595,820	17,128,635	11,169,081	25,039,902	124.2%

⁽¹⁾ Flat rate ticket, valid both for the museum and the archaeological site.

⁽²⁾ The operation of Museums was suspended from March 14th until June 16th 2020 and again gradually from November 1st 2020 until May 13th 2021. The operation of Archaeological Sites was suspended March 14th until May 17th 2020 and from November 7th 2020 until March 21st 2021, in the framework of the preventative measures against the Covid-19 pandemic.

⁽³⁾ Revised data for 2020, due to transmission of additional data from administrative sources.

EXPLANATORY NOTES

Survey on Museums and Archaeological Sites Attendance	The Survey on Museums and Archaeological Sites Attendance has been producing results since 1970. The survey collects data from the Hellenic Organization of Cultural Resources Development (HOCRED), supervised by the Ministry of Culture and Sports, on the number of visitors and the receipts from the tickets sold in the Museums and Archaeological sites of the country. The corresponding data for the Acropolis Museum is available from December 2009 onwards.
Legal Framework	The survey is conducted since 1970 on a regular basis and it produces results on a monthly and yearly basis, in compliance with the Joint Ministerial Decision 15189/B379/73.
Reference Period	1/8/2021 έως 31/8/2021
Methodology and Definitions	The survey is conducted on a monthly basis from data mainly collected from the Hellenic Organization of Cultural Resources Development (HOCRED), supervised by the Ministry of Culture and Sports, on the number of visitors and the receipts from the tickets sold in the Museums and Archaeological sites of the Country. ELSTAT tabulates and presents the data for the whole of the Country, by month and by year. Number of flat rate tickets: From April 1999 onwards, in some museums and the nearby archaeological sites, in addition to the ordinary ticket, a new “flat rate ticket” was established, which is valid for both the museum and the nearby archaeological site. The total number of these flat rate tickets for August 2021 was 96,243 .
References	More information on the Survey on Museums and Archaeological Sites Attendance and detailed time series are available on: http://www.statistics.gr/en/statistics/-/publication/SCI21/