



PRESS RELEASE

SURVEYS ON SECONDARY GENERAL EDUCATION (LOWER AND UPPER SECONDARY SCHOOLS) END OF SCHOOL YEAR 2019/2020

The Hellenic Statistical Authority (ELSTAT) announces data on Secondary General Education (lower and upper secondary schools) deriving from the relevant surveys for the end of the school year 2019/2020. In the first part of this press release, data on lower and upper secondary education schools are presented and the second part includes data on the Ecclesiastical Secondary Education Schools and Second Chance Schools, as branches of the Secondary General Education.

GENERAL SECONDARY EDUCATION (LOWER AND UPPER SECONDARY SCHOOLS)

The data collected from the surveys on Secondary Education, pertaining to lower and upper secondary education schools can be summarized as follows:

- a) In lower secondary schools, **school units** in the school year 2019/2020 amounted to 1,818 while in 2018/2019 amounted to 1,824. In upper secondary schools, **school units** in the school year 2019/2020 amounted to 1,347 compared with 1,352 in 2018/19 (Tables 2 and 4, respectively);
- b) **Teaching staff** in the school year 2019/2020 compared with 2018/2019 increased from 39,470 to 39,524 in lower secondary schools and from 23,652 to 23,914 in upper secondary schools (Tables 2 and 4, respectively);
- c) **The number of pupils enrolled** in the school year 2019/2020, compared with the corresponding number in the school year 2018/2019, increased from 317,622 to 320,822 in lower secondary schools and decreased from 238,968 to 233,627 in upper secondary schools (Tables 3 and 5, respectively);
- d) **The number of graduates** in the school year 2019/2020, compared with the corresponding number in the school year 2018/2019, increased from 100,489 to 101,607 in lower secondary schools and decreased from 77,394 to 76,998 in upper secondary schools (Tables 3 and 5, respectively);
- e) **The ratio of teaching staff to pupils**, in the school year 2019/2020, was 1 teacher for 8.1 pupils in lower secondary schools and 1 teacher for 9.8 pupils in upper secondary schools, while for the school year 2018/2019 the corresponding ratio was 1 to 8.0 and 1 to 10.1 respectively (Tables 2,3,4 and 5);
- f) The **Region of Attiki** accounted for the largest share of pupils enrolled in Secondary Education in Greece, with 34.8% in lower secondary schools and 36.9% in upper secondary schools (Graphs 2 and 3 respectively).

Information on methodological issues:

Division of Sectoral Statistics
Section of Statistics on Education & Sports
Head of the Section: Antonios Kritikos
Tel: +30 213 135 2134, 2786
e-mail: a.kritikos@statistics.gr

Information for data provision:

Tel. +30 213 135 2022, 2310
email: data.dissem@statistics.gr

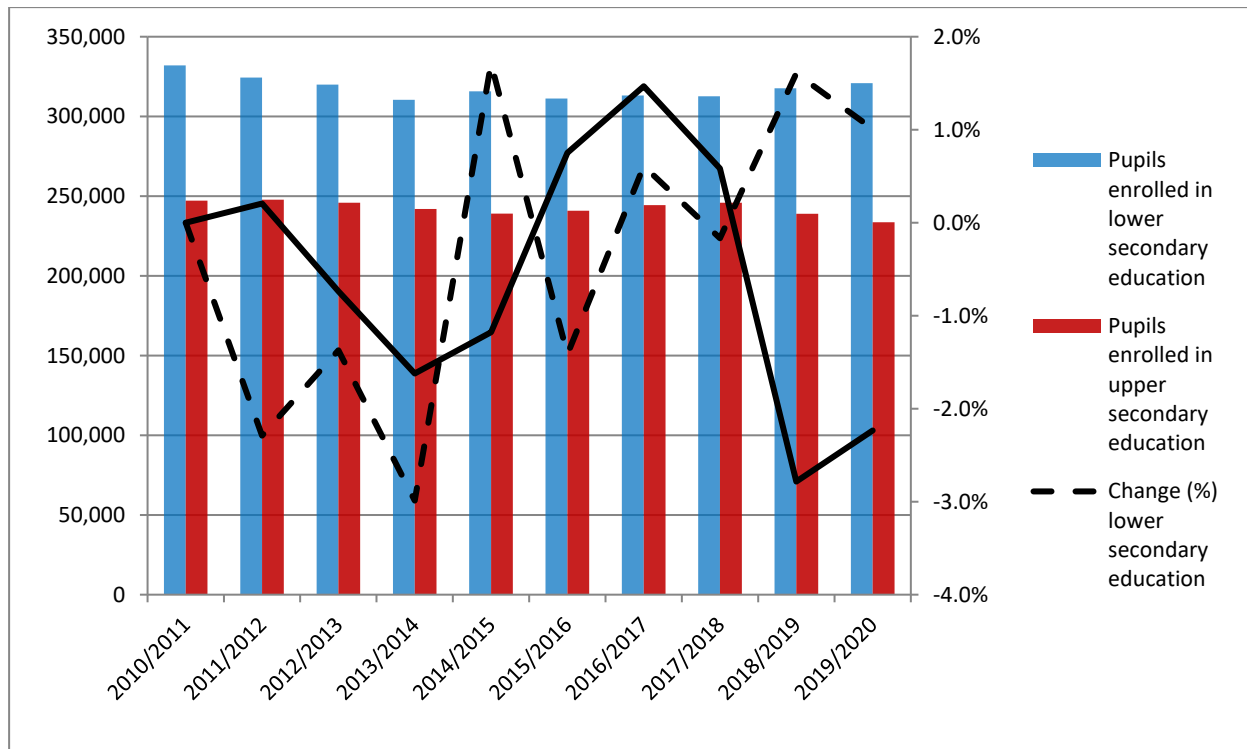
More specifically, Table 1 and Graph 1 depict the evolution of pupil population in lower and upper secondary education during the period 2010/2011 - 2019/2020.

Table 1
Evolution of pupil population in Secondary Education 2010/11 – 2019/20

School year	Pupils enrolled ¹	
	Lower secondary education schools	Upper secondary education schools
2010/2011	332,005	247,209
2011/2012	324,402	247,717
2012/2013	319,950	245,892
2013/2014	310,389	241,905
2014/2015	315,702	239,055
2015/2016	311,236	240,852
2016/2017	313,130	244,386
2017/2018	312,604	245,811
2018/2019	317,622	238,968*
2019/2020	320,822	233,627

*revised data

Graph 1
Evolution of pupil population in Secondary Education 2010/11 – 2019/20



¹ Ecclesiastical secondary education schools and Second Chance schools are not included.

A. LOWER SECONDARY SCHOOLS

Tables 2 and 3 present data on the number of school units, teaching staff, pupils enrolled and graduates (Ecclesiastical Schools and Second Chance Schools are not included).

Table 2. School units and teaching staff ² (Lower secondary education)

<i>By Type of school unit</i>						
School units	Number of school units			Teaching staff		
	2018/19	2019/20	Change (%)	2018/19	2019/20	Change (%)
Public	1,725	1,724	-0.1	37,148	37,196	0.1
Private	99	94	-5.1	2,322	2,328	0.3
TOTAL	1,824	1,818	-0.3	39,470	39,524	0.1
<i>By Region</i>						
Region (NUTS 2)	Number of school units			Teaching staff		
	2018/19	2019/20	Change (%)	2018/19	2019/20	Change (%)
Anatoliki Makedonia, Thraki	98	98	0.0	2,161	2,171	0.5
Kentriki Makedonia	293	291	-0.7	6,500	6,450	-0.8
Dytiki Makedonia	69	69	0.0	1,178	1,143	-3.0
Thessalia	126	125	-0.8	2,971	2,906	-2.2
Ipeiros	83	81	-2.4	1,407	1,391	-1.1
Ionia Nisia	50	50	0.0	1,098	1,096	-0.2
Dytiki Ellada	142	143	0.7	2,616	2,590	-1.0
Stereia Ellada	119	119	0.0	2,020	1,995	-1.2
Peloponnisos	111	110	-0.9	2,066	2,047	-0.9
Attiki	484	485	0.2	12,211	12,401	1.6
Voreio Aigaio	54	54	0.0	1,007	1,026	1.9
Notio Aigaio	86	84	-2.3	1,674	1,708	2.0
Kriti	109	109	0.0	2,561	2,600	1.5
TOTAL	1,824	1,818	-0.3	39,470	39,524	0.1

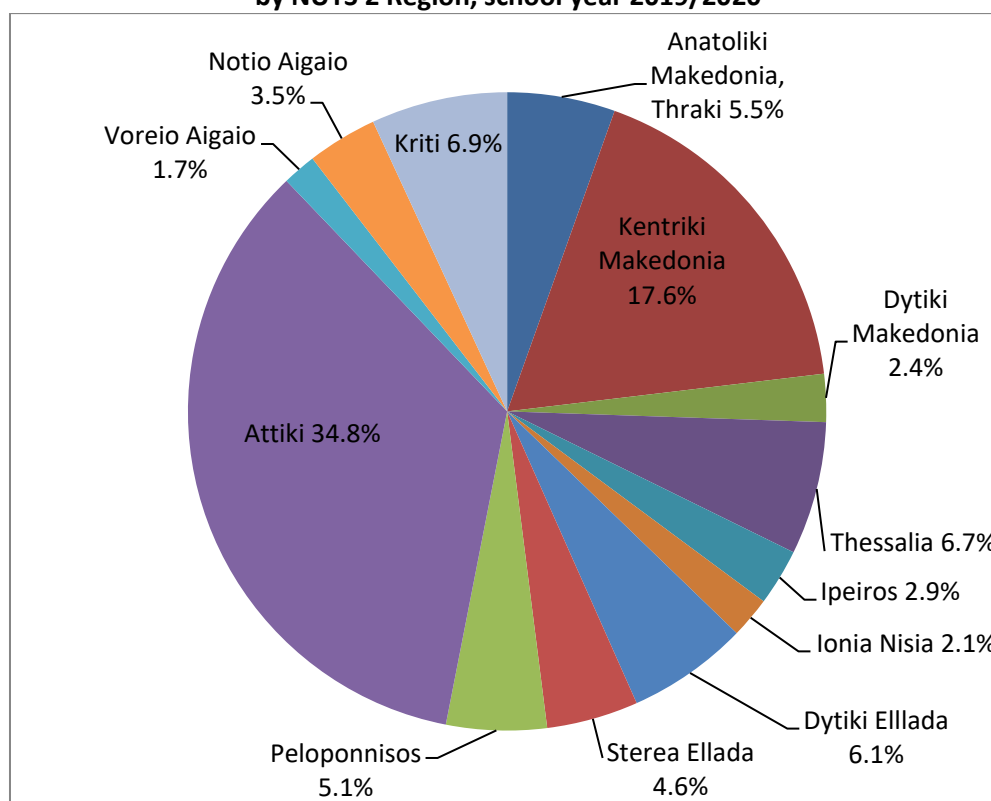
² Absent teachers are also included.

Absent teachers are the teachers with a fixed post in the school unit, who are absent for more than 20 days (due to illness, training, maternity leave, etc) and their replacement is pending, as well as the teachers who are seconded to other administrative posts of the Ministry of Education and Religious Affairs or elsewhere.

**Table 3. Pupils enrolled and graduates by type of school unit and NUTS 2 Region
(Lower Secondary Schools)**

<i>By Type of School Unit</i>						
School units	Pupils enrolled			Graduates		
	2018/19	2019/20	Change (%)	2018/19	2019/20	Change (%)
Public	301,524	304,995	1.2	95,273	96,693	1,5
Private	16,098	15,827	-1.7	5,216	4,914	-5,8
TOTAL	317,622	320,822	1.0	100,489	101,607	1,1
<i>By Region</i>						
Region (NUTS 2)	Pupils enrolled			Graduates		
	2018/19	2019/20	Change (%)	2018/19	2019/20	Change (%)
Anatoliki Makedonia, Thraki	17,392	17,542	0.9	5,307	5,463	2.9
Kentriki Makedonia	56,383	56,612	0.4	17,947	17,757	-1.1
Dytiki Makedonia	7,786	7,775	-0.1	2,511	2,558	1.9
Thessalia	21,399	21,617	1.0	6,586	6,871	4.3
Ipeiros	9,058	9,208	1.7	2,869	2,919	1.7
Ionia Nisia	6,655	6,674	0.3	2,178	2,127	-2.3
Dytiki Ellada	19,644	19,640	0.0	6,256	6,316	1.0
Stereia Ellada	14,870	14,912	0.3	4,763	4,753	-0.2
Peloponnisos	16,181	16,312	0.8	5,038	5,193	3.1
Attiki	109,804	111,541	1.6	34,745	35,388	1.9
Voreio Aigaio	5,415	5,482	1.2	1,749	1,719	-1.7
Notio Aigaio	11,292	11,377	0.8	3,608	3,684	2.1
Kriti	21,743	22,130	1.8	6,932	6,859	-1.1
TOTAL	317,622	320,822	1.0	100,489	101,607	1.1

Graph 2. Percentage distribution of pupils enrolled in lower secondary schools, by NUTS 2 Region, school year 2019/2020



B. UPPER SECONDARY SCHOOLS

Tables 4 and 5 present data on the number of school units, teaching staff, pupils enrolled and graduates (Ecclesiastical Schools are not included).

Table 4. School units and teaching staff ³ (Upper secondary schools)

<i>By Type of School Units</i>						
School units	Number of school units			Teaching staff		
	2018/19	2019/20	Change (%)	2018/19	2019/20	Change (%)
Public	1,260	1,261	0.1	21,736	22,058	1.5
Private	92	86	-6.5	1,916	1,856	-3.1
TOTAL	1,352	1,347	-0.4	23,652	23,914	1.1
<i>By Region</i>						
Region (NUTS 2)	Number of school units			Teaching staff		
	2018/19	2019/20	Change (%)	2018/19	2019/20	Change (%)
Anatoliki Makedonia, Thraki	64	64	0.0	1,054	1,082	2.7
Kentriki Makedonia	212	209	-1.4	4,028	3,965	-1.6
Dytiki Makedonia	36	36	0.0	642	630	-1.9
Thessalia	98	97	-1.0	1,503	1,513	0.7
Ipeiros	52	51	-1.9	836	828	-1.0
Ionia Nisia	36	36	0.0	484	486	0.4
Dytiki Ellada	99	99	0.0	1,532	1,536	0.3
Stereia Ellada	92	92	0.0	1,072	1,094	2.1
Peloponnisos	90	90	0.0	1,239	1,266	2.2
Attiki	385	385	0.0	8,628	8,823	2.3
Voreio Aigaio	42	42	0.0	491	510	3.9
Notio Aigaio	68	67	-1.5	654	673	2.9
Kriti	78	79	1.3	1,489	1,508	1.3
TOTAL	1,352	1,347	-0.4	23,652	23,914	1.1

³ Absent teachers are also included.

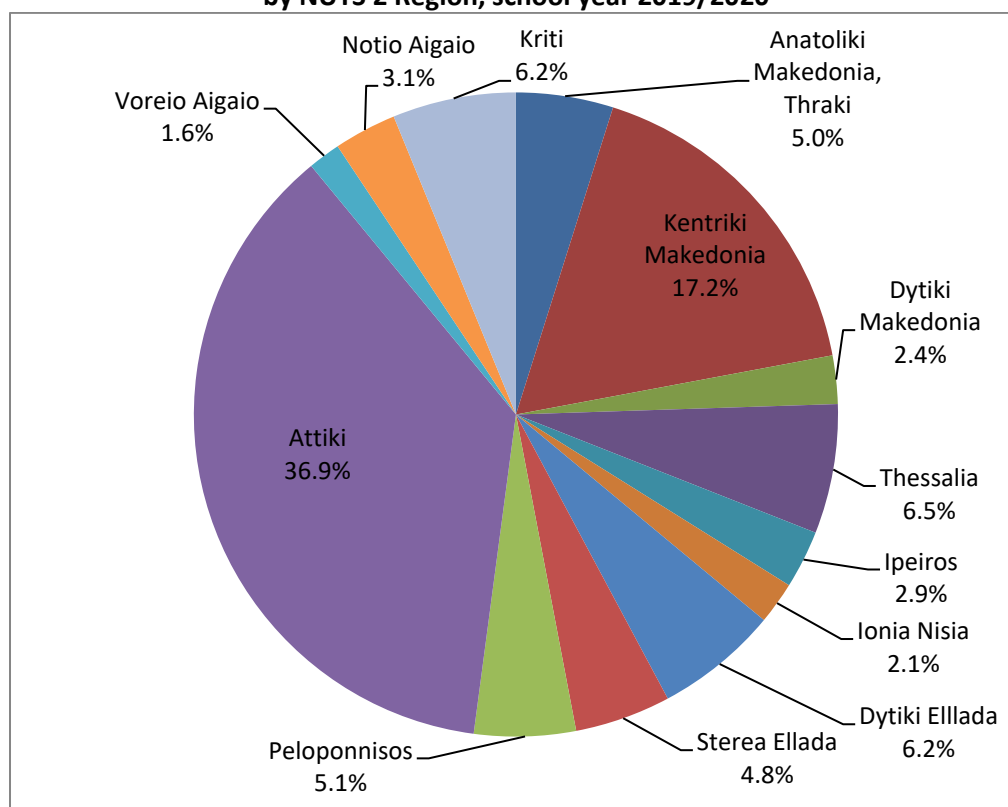
Absent teachers are the teachers with a fixed post in the school unit, who are absent for more than 20 days (due to illness, training, maternity leave, etc) and their replacement is pending, as well as the teachers who are seconded to other administrative posts of the Ministry of Education and Religious Affairs or elsewhere.

Table 5. Pupils enrolled and graduates by type of school unit and NUTS 2 Region (Upper Secondary Schools)

<i>By Type of School Unit</i>						
School units	Pupils enrolled			Graduates		
	2018/19	2019/20	Change (%)	2018/19	2019/20	Change (%)
Public	224,353	219,560	-2.1	72,785	72,386	-0.5
Private	14,615	14,067	-3.7	4,609	4,612	0.1
TOTAL	238,968*	233,627	-2.2	77,394	76,998	-0.5
<i>By NUTS 2 Region</i>						
Region (NUTS 2)	Pupils enrolled			Graduates		
	2018/19	2019/20	Change (%)	2018/19	2019/20	Change (%)
Anatoliki Makedonia, Thraki	11,824	11,393	-3.6	3,865	3,756	-2.8
Kentriki Makedonia	42,137	40,138	-4.7	13,865	13,502	-2.6
Dytiki Makedonia	5,904	5,667	-4.0	1,928	1,866	-3.2
Thessalia	15,607	15,178	-2.7	4,966	5,118	3.1
Ipeiros	7,016	6,811	-2.9	2,269	2,199	-3.1
Ionia Nisia	4,939	4,959	0.4	1,613	1,574	-2.4
Dytiki Ellada	14,608	14,415	-1.3	4,649	4,814	3.5
Stereia Ellada	11,509	11,252	-2.2	3,740	3,619	-3.2
Peloponnisos	12,178	11,905	-2.2	4,084	3,887	-4.8
Attiki	86,906	86,284	-0.7	27,855	28,325	1.7
Voreio Aigaio	3,989	3,802	-4.7	1,295	1,311	1.2
Notio Aigaio	7,573	7,344	-3.0	2,446	2,344	-4.2
Kriti	14,778	14,479	-2.0	4,819	4,683	-2.8
TOTAL	238,968*	233,627	-2.2	77,394	76,998	-0.5

*revised data

Graph 3. Percentage distribution of pupils enrolled in upper secondary schools by NUTS 2 Region, school year 2019/2020



ECCLESIASTICAL SECONDARY EDUCATION (LOWER AND UPPER SECONDARY SCHOOLS)

The ecclesiastical lower and upper secondary schools constitute a separate branch of the Secondary General Education. More specifically:

- a) **The number of school units** in ecclesiastical secondary education remained the same between school years 2018/2019 and 2019/2020 (Tables 6 and 7, respectively);
- b) **Teaching staff**, employed in both lower and upper secondary schools, remained the same between school years 2018/2019 and 2019/2020 (Table 8);
- c) **The number of pupils enrolled** in the school year 2019/2020, compared with the corresponding number in the school year 2018/2019, recorded a 6.8% increase in ecclesiastical lower secondary schools and a 30.9% decrease in ecclesiastical upper secondary schools (Tables 6 and 7, respectively);
- d) **The number of graduates** in the school year 2019/2020, compared with the corresponding number in the school year 2018/2019, recorded a 9.7% increase in ecclesiastical lower secondary schools and a 17.9% decrease in ecclesiastical upper secondary schools (Tables 6 and 7, respectively);

Table 6. Ecclesiastical Lower Secondary Schools

Pupils enrolled/Graduates and number of school units			
	School Year		Change (%)
	2018/19	2019/20	
Pupils enrolled	221	236	6.8
Graduates	72	79	9.7
Number of School Units⁴	7	7	0.0

Table 7. Ecclesiastical Upper Secondary Schools

Pupils enrolled/Graduates and number of school units			
	School Year		Change (%)
	2018/19	2019/20	
Pupils enrolled	685	473	-30.9
Graduates	212	174	-17.9
Number of School Units⁵	10	10	0.0

Table 8. Teaching Staff in Ecclesiastical Secondary Education

Teaching Staff			
	School Year		Change (%)
	2018/19	2019/20	
TOTAL	164	164	0.0

⁴ All lower secondary schools include upper secondary school classes.

⁵ Lower secondary school units that host upper secondary school classes are included.

SECOND CHANCE SCHOOLS

Second Chance Schools are lower secondary education schools addressed to pupils that are over 18 years old. Data concerning the Second Chance Schools are presented for the school year 2019/2020 compared with school year 2018/2019 and the following can be observed:

- a) **School units** in the school year 2019/2020 compared with the school 2018/2019 increased by 1.0% (Table 9).
- b) In the school year 2019/2020 compared with the school 2018/2019, **teaching staff** increased by 5.9% (Table 10).
- c) **The number of pupils enrolled** in the school year 2019/2020, compared with the corresponding number in the school year 2018/2019, recorded a 4.2% increase (Table 11).
- d) **The number of foreign pupils** in the school year 2018/2019, compared with the school year 2018/2019, increased by 6.4% (table 12).
- e) **The number of pupils of the second grade that graduated** in the school year 2019/2020, compared with the corresponding number in the school year 2018/2019, recorded a 29.0% increase (table 13).

Table 9. Number of school units of Second Chance Schools by type

Type of school unit	Total number of school units			Of which:					
				Central Unit			Branches		
	2018/19	2019/20	Change %	2018/19	2019/20	Change %	2018/19	2019/20	Change %
TOTAL	98	99	1.0	74	75	1.4	24	24	0.0
Day	10	10	0.0	9	9	0.0	1	1	0.0
Afternoon	88	89	1.1	65	66	1.5	23	23	0.0

Table 10. Number of teaching staff of Second Chance Schools, by status and gender

Status of teaching staff	Total			Males			Females		
	2018/19	2019/20	Change %	2018/19	2019/20	Change %	2018/19	2019/20	Change %
TOTAL	1,032	1,093	5.9	419	449	7.2	613	644	5.1
Principals	74	76	2.7	52	52	0.0	22	24	9.1
Vice Principals	74	67	-9.5	44	40	-9.1	30	27	-10.0
Seconded permanent staff	253	261	3.2	110	109	-0.9	143	152	6.3
Fixed-Term Contract staff	631	689	9.2	213	248	16.4	418	441	5.5

Table 11. Number of pupils of Second Chance Schools by gender and grade

Grade	Total			Males			Females		
	2018/19	2019/20	Change %	2018/19	2019/20	Change %	2018/19	2019/20	Change %
TOTAL	6,360	6,625	4.2	3,648	3,716	1.9	2,712	2,909	7.3
Grade A	3,853	3,463	-10.1	2,243	1,980	-11.7	1,610	1,483	-7.9
Grade B	2,507	3,162	26.1	1,405	1,736	23.6	1,102	1,426	29.4

Table 12. Number of foreign pupils of Second Chance Schools by gender and citizenship

Citizenship	Total			Males			Females		
	2018/19	2019/20	Change %	2018/19	2019/20	Change %	2018/19	2019/20	Change %
TOTAL	1,098	1,168	6.4	796	829	4.1	302	339	12.3
EU Member State	166	145	-12.7	116	102	-12.1	50	43	-14.0
Outside the EU	919	1,021	11.1	675	727	7.7	244	294	20.5
Unknown citizenship	13	2	-84.6	5	0	-100.0	8	2	-75.0

Table 13. Pupils of Second Chance Schools of the second grade that graduated, by gender and NUTS 2 Region

NUTS 2 Region	Total			Males			Females		
	2018/19	2019/20	Change %	2018/19	2019/20	Change %	2018/19	2019/20	Change %
TOTAL	2,023	2,610	29.0	1,095	1,411	28.9	928	1,199	29.2
Anatoliki Makedonia, Thraki	166	255	53.6	77	117	51.9	89	138	55.1
Kentriki Makedonia	379	506	33.5	196	272	38.8	183	234	27.9
Dytiki Makedonia	60	93	55.0	22	58	163.6	38	35	-7.9
Ipeiros	112	117	4.5	47	69	46.8	65	48	-26.2
Thessalia	138	156	13.0	83	97	16.9	55	59	7.3
Stereia Ellada	164	235	43.3	104	144	38.5	60	91	51.7
Ionia Nisia	38	33	-13.2	22	23	4.5	16	10	-37.5
Dytiki Ellada	176	260	47.7	96	131	36.5	80	129	61.3
Peloponnisos	82	102	24.4	50	50	0.0	32	52	62.5
Attiki	319	399	25.1	179	184	2.8	140	215	53.6
Voreio Aigaio	163	175	7.4	92	108	17.4	71	67	-5.6
Notio Aigaio	72	81	12.5	37	39	5.4	35	42	20.0
Kriti	154	198	28.6	90	119	32.2	64	79	23.4

EXPLANATORY NOTES

Survey on General Secondary Education General Secondary Education includes lower and upper secondary schools of general education, ecclesiastical secondary schools and second chance schools. The surveys are conducted, on a yearly basis, aiming at collecting data on the number of pupils enrolled, the school units and the number of teaching staff.

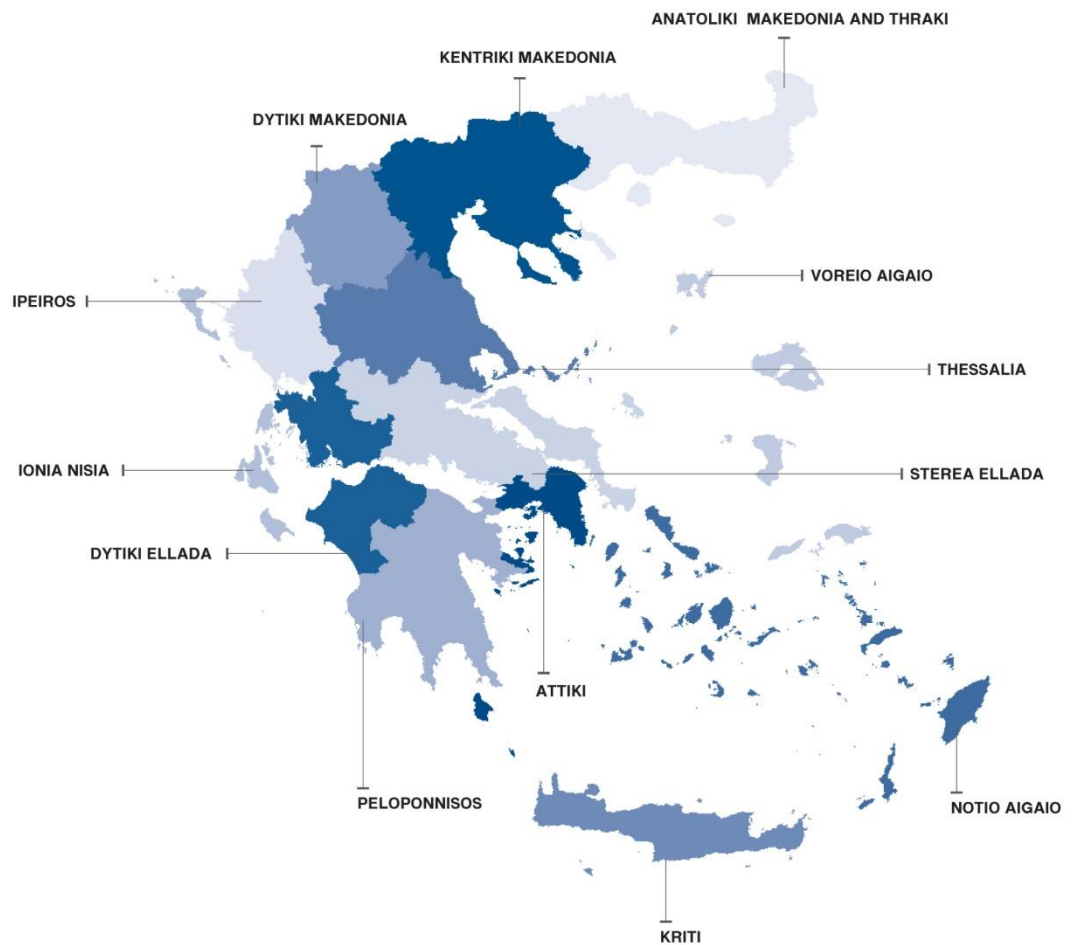
Legal Frame The surveys are conducted by virtue of Regulation 452/2008 of the European Parliament and the Council and implementing Regulation 912/2013 of the European Commission.

Statistical Units The statistical units are the school units.

Coverage Greece total.

Geographical Classification The geographical classification is based on Nomenclature of Territorial Units for Statistics.

Map of the 13 Regions (NUTS 2) of Greece



Dissemination of results The data are posted on a yearly basis on the website of ELSTAT and are published in a relevant Press Release.

Reference period The data of the surveys refer to the end of school year 2019/2020.

Methodology and coverage Until the school year 2013/2014, the surveys on General Secondary Education used to be census, yearly surveys and they were conducted by ELSTAT.
For the school year 2014/2015 onwards the data of these surveys are collected as follows:

- As regards public school units, the data were extracted from the “live” e-platform “MySchool” of the Ministry of Education and Religious Affairs.
- As regards private school units, the data were collected from the questionnaires that had been sent to the relevant school units.

For Second Chance Schools’ survey, questionnaires were sent to the schools.

References More information, such as tables with the survey results, samples of questionnaires, etc, on the Survey on General Secondary Education can be found on the webpage of ELSTAT www.statistics.gr and at the link: “Statistics” / Population and Social Conditions / Education / Lower Secondary Education Schools (Beginning – End of school year) or Upper Secondary Education Schools (Beginning – End of school year)”.