



PRESS RELEASE

SURVEYS ON PRE-PRIMARY AND PRIMARY EDUCATION (KINDERGARTENS AND PRIMARY SCHOOLS) END OF SCHOOL YEAR 2019/2020

The Hellenic Statistical Authority (ELSTAT) announces data on Pre-Primary and Primary Education Statistics for the school year 2019/2020. On the basis of available survey data the following observations can be made:

- a) In the school year 2019/2020 compared with the school year 2018/2019, **school units** decreased by 0.1% in kindergartens and by 0.5% in primary schools (Tables 2 and 4, respectively).
- b) In the school year 2019/2020 compared with the school year 2018/2019, **teaching staff** increased by 8.2% in kindergartens and by 1.6% in primary schools (Tables 2 and 4, respectively).
- c) The **number of pupils** enrolled in the school year 2019/2020 compared with the corresponding number in the school year 2018/2019 recorded a 6.4% increase in kindergartens and a 1.6% decrease in primary schools (Tables 3 and 5, respectively).
- d) The **number of graduates** in primary schools in the school year 2019/2020 compared with 2018/2019 increased by 4.8% (Table 6).
- e) The **ratio of teaching staff to pupils**, in the school year 2019/2020, was 1 to 10.0 in kindergartens and 1 to 8.4 in primary schools; in the school year 2018/2019 the corresponding ratio was 1 to 10.2 and 1 to 8.7, respectively (Tables 2,3,4 and 5).
- f) The **Region of Attiki** accounted for the largest share of pupils enrolled in pre-primary and primary education schools with 33.0% for kindergartens and 35.3% for primary schools (Graphs 2 and 3, respectively).

Information on methodological issues:

Division of Sectoral Statistics
Section of Statistics on Education & Sports
Head of the Section: Antonios Kritikos
Tel: +30 213 135 2134, 2782
Fax: +30 213 135 2780
e-mail: a.kritikos@statistics.gr

Information for data provision:

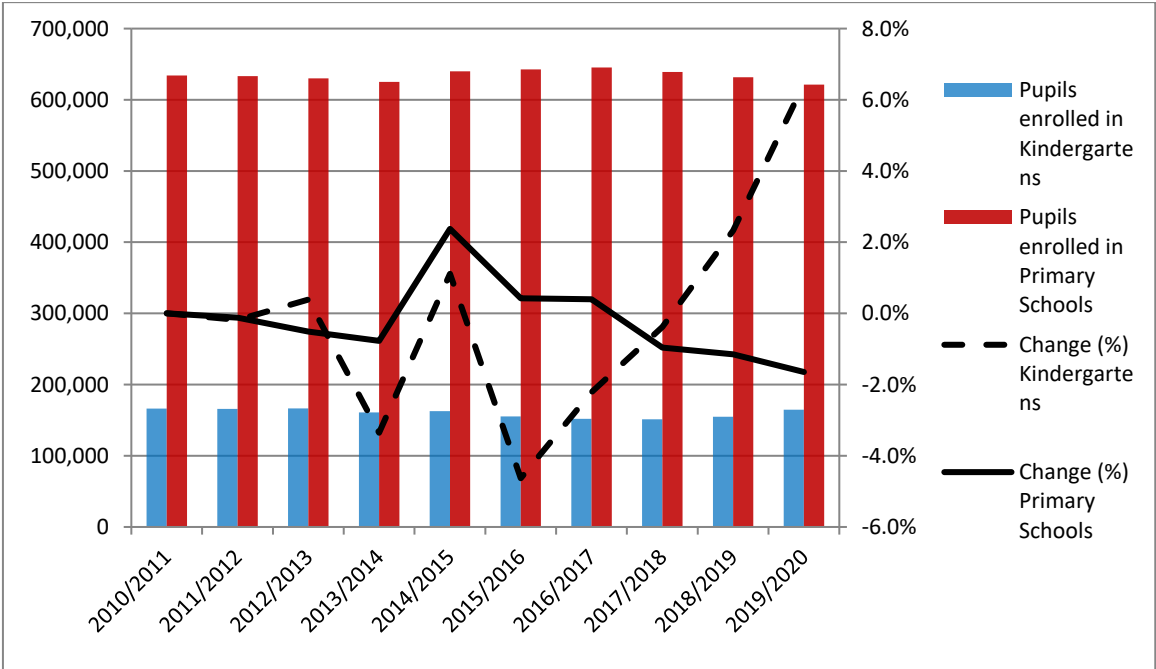
Tel. +30 213 135 2022, 2310
email: data.dissem@statistics.gr

Table 1 and Graph 1 depict the evolution of the pupil population of kindergartens and primary schools during school years 2010/2011 to 2019/2020.

Table 1
Evolution of pupil population in Pre-Primary and Primary Education 2010/2011 - 2019/2020

| School Year | Number of Pupils | |
|-------------|------------------|-----------------|
| | Kindergartens | Primary Schools |
| 2010/2011 | 166,233 | 634,048 |
| 2011/2012 | 165,931 | 633,291 |
| 2012/2013 | 166,576 | 630,043 |
| 2013/2014 | 160,994 | 625,165 |
| 2014/2015 | 162,781 | 640,001 |
| 2015/2016 | 155,243 | 642,707 |
| 2016/2017 | 151,804 | 645,250 |
| 2017/2018 | 151,225 | 639,037 |
| 2018/2019 | 154,744 | 631,700 |
| 2019/2020 | 164,716 | 621,298 |

Graph 1
Evolution of pupil population in Pre-Primary and Primary Education 2010/11 - 2019/20



A. KINDERGARTENS

Tables 2 and 3 present data on the number of kindergartens, teaching staff and pupils enrolled.

Table 2. School Units and Teaching Staff¹ by Type of School Unit and NUTS 2 Region (Kindergartens)

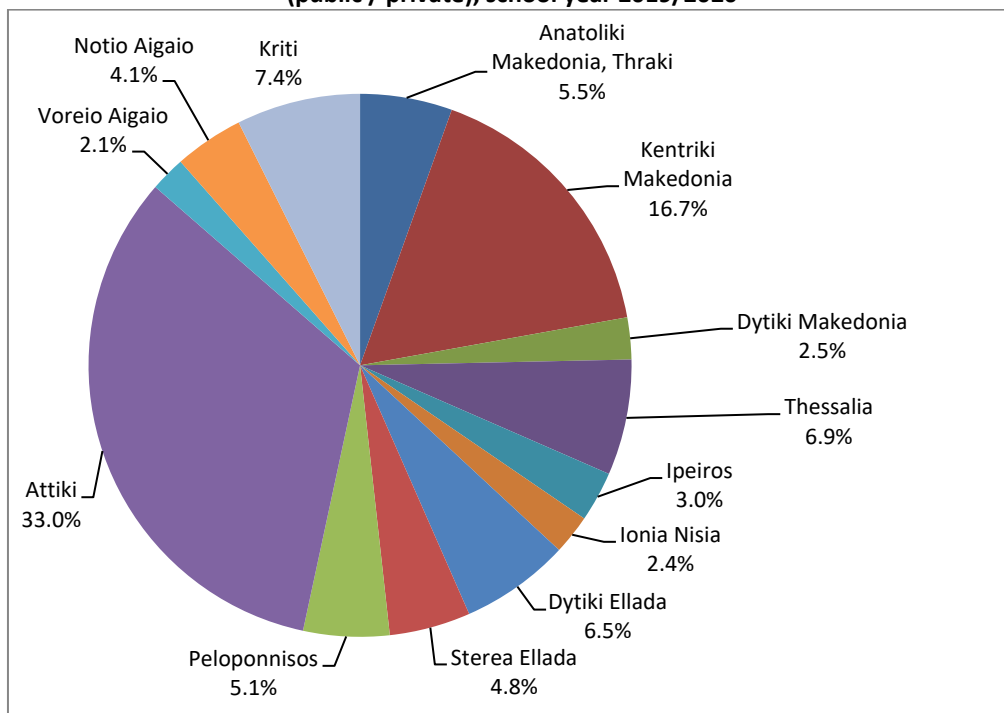
| <i>By Type of School Unit</i> | | | | | | |
|-------------------------------|------------------------|--------------|-------------|----------------|---------------|------------|
| School Units | Number of School Units | | | Teaching Staff | | |
| | 2018/19 | 2019/20 | Change (%) | 2018/19 | 2019/20 | Change (%) |
| Public | 4,962 | 4,937 | -0.5 | 14,233 | 15,391 | 8.1 |
| Private | 649 | 670 | 3.2 | 998 | 1,092 | 9.4 |
| TOTAL | 5,611 | 5607 | -0.1 | 15,231 | 16,483 | 8.2 |
| <i>By NUTS 2 Region</i> | | | | | | |
| NUTS 2 Region | Number of School Units | | | Teaching Staff | | |
| | 2018/19 | 2019/20 | Change (%) | 2018/19 | 2019/20 | Change (%) |
| Anatoliki Makedonia, Thraki | 315 | 317 | 0.6 | 822 | 876 | 6.6 |
| Kentriki Makedonia | 993 | 988 | -0.5 | 2,738 | 2,857 | 4.3 |
| Dytiki Makedonia | 187 | 188 | 0.5 | 460 | 475 | 3.3 |
| Thessalia | 451 | 444 | -1.6 | 1,038 | 1,112 | 7.1 |
| Ipeiros | 207 | 207 | 0.0 | 525 | 538 | 2.5 |
| Ionia Nisia | 143 | 144 | 0.7 | 403 | 456 | 13.2 |
| Dytiki Ellada | 401 | 398 | -0.7 | 929 | 976 | 5.1 |
| Stereia Ellada | 315 | 311 | -1.3 | 788 | 837 | 6.2 |
| Peloponnisos | 341 | 333 | -2.3 | 829 | 853 | 2.9 |
| Attiki | 1,456 | 1471 | 1.0 | 4,302 | 4,878 | 13.4 |
| Voreio Aigaio | 150 | 150 | 0.0 | 454 | 486 | 7.0 |
| Notio Aigaio | 223 | 225 | 0.9 | 644 | 719 | 11.6 |
| Kriti | 429 | 431 | 0.5 | 1,299 | 1,420 | 9.3 |
| TOTAL | 5,611 | 5,607 | -0.1 | 15,231 | 16,483 | 8.2 |

¹ Teaching staff includes teachers classified as absent. "Absent teachers" are the teachers with a fixed post in the school unit, who are absent for more than 20 days (due to illness, training, maternity leave, etc) and their replacement is pending, as well as the teachers who are seconded to other administrative posts of the Ministry of Education and Religious Affairs or elsewhere.

Table 3. Pupils enrolled by Type of School Unit and NUTS 2 Region (Kindergartens)

| <i>By Type of School Unit</i> | | | | | | | | | |
|-------------------------------|----------------|----------------|------------|---------------|---------------|------------|---------------|---------------|------------|
| School Units | Greece total | | | Males | | | Females | | |
| | 2018/19 | 2019/20 | Change (%) | 2018/19 | 2019/20 | Change (%) | 2018/19 | 2019/20 | Change (%) |
| Public | 138,762 | 146,302 | 5.4 | 71,352 | 75,028 | 5.2 | 67,410 | 71,274 | 5.7 |
| Private | 15,982 | 18,414 | 15.2 | 8,199 | 9,534 | 16.3 | 7,783 | 8,880 | 14.1 |
| TOTAL | 154,744 | 164,716 | 6.4 | 79,551 | 84,562 | 6.3 | 75,193 | 80,154 | 6.6 |
| <i>By Region</i> | | | | | | | | | |
| NUTS 2 Region | Greece total | | | Males | | | Females | | |
| | 2018/19 | 2019/20 | Change (%) | 2018/19 | 2019/20 | Change (%) | 2018/19 | 2019/20 | Change (%) |
| Anatoliki Makedonia, Thraki | 8,534 | 9,040 | 5.9 | 4,349 | 4,607 | 5.9 | 4,185 | 4,433 | 5.9 |
| Kentriki Makedonia | 26,826 | 27,470 | 2.4 | 13,846 | 14,070 | 1.6 | 12,980 | 13,400 | 3.2 |
| Dytiki Makedonia | 3,843 | 4,107 | 6.9 | 2,014 | 2,076 | 3.1 | 1,829 | 2,031 | 11.0 |
| Thessalia | 10,235 | 11,343 | 10.8 | 5,294 | 5,896 | 11.4 | 4,941 | 5,447 | 10.2 |
| Ipeiros | 4,868 | 4,933 | 1.3 | 2,451 | 2,495 | 1.8 | 2,417 | 2,438 | 0.9 |
| Ionia Nisia | 3,647 | 3,895 | 6.8 | 1,905 | 2,066 | 8.5 | 1,742 | 1,829 | 5.0 |
| Dytiki Ellada | 9,824 | 10,727 | 9.2 | 5,053 | 5,500 | 8.8 | 4,771 | 5,227 | 9.6 |
| Stereia Ellada | 8,021 | 7,960 | -0.8 | 4,213 | 4,117 | -2.3 | 3,808 | 3,843 | 0.9 |
| Peloponnisos | 8,354 | 8,441 | 1.0 | 4,274 | 4,301 | 0.6 | 4,080 | 4,140 | 1.5 |
| Attiki | 49,489 | 54,406 | 9.9 | 25,304 | 28,004 | 10.7 | 24,185 | 26,402 | 9.2 |
| Voreio Aigaio | 3,453 | 3,450 | -0.1 | 1,751 | 1,755 | 0.2 | 1,702 | 1,695 | -0.4 |
| Notio Aigaio | 6,160 | 6,791 | 10.2 | 3,149 | 3,595 | 14.2 | 3,011 | 3,196 | 6.1 |
| Kriti | 11,490 | 12,153 | 5.8 | 5,948 | 6,080 | 2.2 | 5,542 | 6,073 | 9.6 |
| TOTAL | 154,744 | 164,716 | 6.4 | 79,551 | 84,562 | 6.3 | 75,193 | 80,154 | 6.6 |

Graph 2
Percentage distribution of pupils enrolled in Kindergartens, by NUTS 2 Region (public / private), school year 2019/2020



B. PRIMARY SCHOOLS

Tables 4, 5 and 6 present data on the number of primary schools, teaching staff, pupils enrolled and graduates.

Tables 4. School Units and Teaching Staff² by Type of School Unit and NUTS 2 Region (Primary Schools)

| <i>By Type of School Unit</i> | | | | | | |
|-------------------------------|------------------------|--------------|-------------|----------------|---------------|------------|
| School Units | Number of School Units | | | Teaching Staff | | |
| | 2018/19 | 2019/20 | Change (%) | 2018/19 | 2019/20 | Change (%) |
| Public | 4,293 | 4,272 | -0.5 | 68,974 | 70,035 | 1.5 |
| Private | 159 | 157 | -1.3 | 3,587 | 3,687 | 2.8 |
| TOTAL | 4,452 | 4,429 | -0.5 | 72,561 | 73,722 | 1.6 |
| <i>By NUTS 2 Region</i> | | | | | | |
| NUTS 2 Region | Number of School Units | | | Teaching Staff | | |
| | 2018/19 | 2019/20 | Change (%) | 2018/19 | 2019/20 | Change (%) |
| Anatoliki Makedonia, Thraki | 345 | 336 | -2.6 | 4,200 | 4,205 | 0.1 |
| Kentriki Makedonia | 749 | 746 | -0.4 | 12,814 | 12,973 | 1.2 |
| Dytiki Makedonia | 155 | 155 | 0.0 | 2,117 | 2,095 | -1.0 |
| Thessalia | 348 | 346 | -0.6 | 4,745 | 4,812 | 1.4 |
| Ipeiros | 185 | 184 | -0.5 | 2,231 | 2,278 | 2.1 |
| Ionia Nisia | 103 | 104 | 1.0 | 1,579 | 1,642 | 4.0 |
| Dytiki Ellada | 373 | 368 | -1.3 | 4,552 | 4,608 | 1.2 |
| Stereia Ellada | 288 | 286 | -0.7 | 3,548 | 3,557 | 0.3 |
| Peloponnisos | 263 | 263 | 0.0 | 3,495 | 3,523 | 0.8 |
| Attiki | 1,006 | 1,006 | 0.0 | 23,617 | 24,148 | 2.2 |
| Voreio Aigaio | 135 | 135 | 0.0 | 1,669 | 1,686 | 1.0 |
| Notio Aigaio | 184 | 184 | 0.0 | 2,657 | 2,719 | 2.3 |
| Kriti | 318 | 316 | -0.6 | 5,337 | 5,476 | 2.6 |
| TOTAL | 4,452 | 4,429 | -0.5 | 72,561 | 73,722 | 1.6 |

² Teaching staff includes teachers classified as absent. "Absent teachers" are the teachers with a fixed post in the school unit, who are absent for more than 20 days (due to illness, training, maternity leave, etc) and their replacement is pending, as well as the teachers who are seconded to other administrative posts of the Ministry of Education and Religious Affairs or elsewhere.

Table 5. Pupils enrolled by Type of School Unit and NUTS 2 Region (Primary Schools)

| <i>By Type of School Unit</i> | | | | | | | | | |
|-------------------------------|----------------|----------------|-------------|----------------|----------------|-------------|----------------|----------------|-------------|
| School Units | Greece total | | | Males | | | Females | | |
| | 2018/19 | 2019/20 | Change (%) | 2018/19 | 2019/20 | Change (%) | 2018/19 | 2019/20 | Change (%) |
| Public | 593,673 | 582,271 | -1.9 | 304,672 | 298,599 | -2.0 | 289,001 | 283,672 | -1.8 |
| Private | 38,027 | 39,027 | 2.6 | 19,669 | 20,162 | 2.5 | 18,358 | 18,865 | 2.8 |
| TOTAL | 631,700 | 621,298 | -1.6 | 324,341 | 318,761 | -1.7 | 307,359 | 302,537 | -1.6 |
| <i>By Region</i> | | | | | | | | | |
| NUTS 2 Region | Greece total | | | Males | | | Females | | |
| | 2018/19 | 2019/20 | Change (%) | 2018/19 | 2019/20 | Change (%) | 2018/19 | 2019/20 | Change (%) |
| Anatoliki Makedonia, Thraki | 34,152 | 33,409 | -2.2 | 17,565 | 17,169 | -2.3 | 16,587 | 16,240 | -2.1 |
| Kentriki Makedonia | 110,232 | 108,297 | -1.8 | 56,402 | 55,394 | -1.8 | 53,830 | 52,903 | -1.7 |
| Dytiki Makedonia | 14,626 | 14,172 | -3.1 | 7,512 | 7,278 | -3.1 | 7,114 | 6,894 | -3.1 |
| Thessalia | 41,820 | 40,970 | -2.0 | 21,450 | 21,056 | -1.8 | 20,370 | 19,914 | -2.2 |
| Ipeiros | 17,533 | 17,495 | -0.2 | 9,106 | 9,048 | -0.6 | 8,427 | 8,447 | 0.2 |
| Ionia Nisia | 13,118 | 13,020 | -0.7 | 6,755 | 6,705 | -0.7 | 6,363 | 6,315 | -0.8 |
| Dytiki Ellada | 39,462 | 38,636 | -2.1 | 20,412 | 19,920 | -2.4 | 19,050 | 18,716 | -1.8 |
| Stereia Ellada | 28,898 | 28,507 | -1.4 | 14,932 | 14,736 | -1.3 | 13,966 | 13,771 | -1.4 |
| Peloponnisos | 31,776 | 30,956 | -2.6 | 16,360 | 15,908 | -2.8 | 15,416 | 15,048 | -2.4 |
| Attiki | 222,121 | 219,024 | -1.4 | 114,062 | 112,199 | -1.6 | 108,059 | 106,825 | -1.1 |
| Voreio Aigaio | 11,393 | 11,193 | -1.8 | 5,809 | 5,733 | -1.3 | 5,584 | 5,460 | -2.2 |
| Notio Aigaio | 22,876 | 22,776 | -0.4 | 11,593 | 11,599 | 0.1 | 11,283 | 11,177 | -0.9 |
| Kriti | 43,693 | 42,843 | -1.9 | 22,383 | 22,016 | -1.6 | 21,310 | 20,827 | -2.3 |
| TOTAL | 631,700 | 621,298 | -1.6 | 324,341 | 318,761 | -1.7 | 307,359 | 302,537 | -1.6 |

Graph 3
Percentage distribution of pupils enrolled in Primary Schools
by NUTS 2 Region, school year 2019/2020

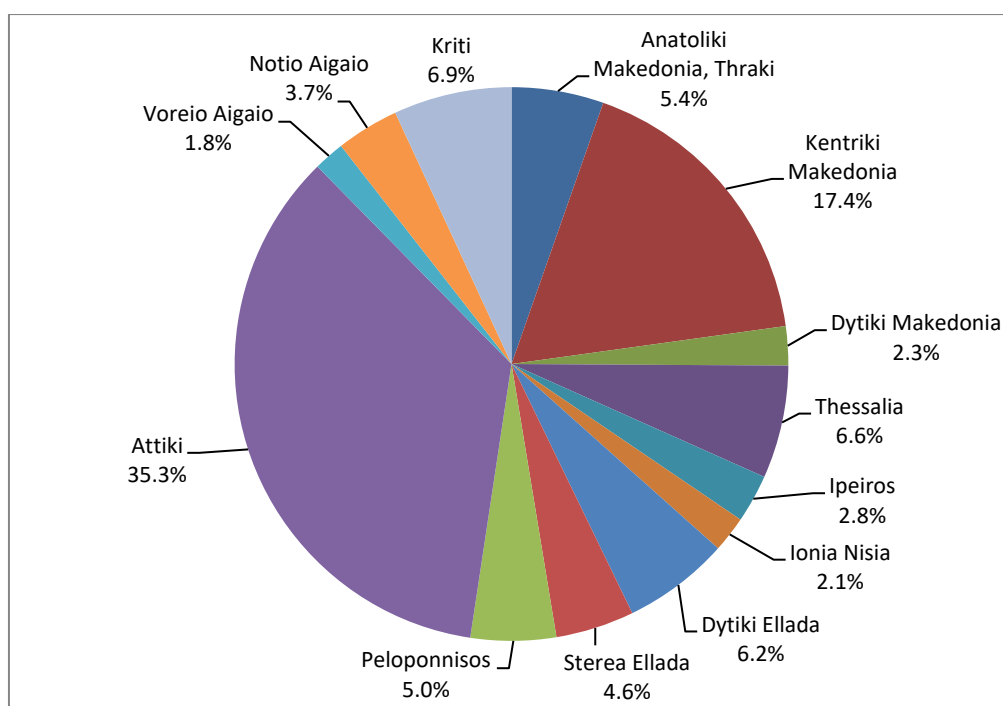


Table 6. Graduates by Type of School Unit and NUTS 2 Region (Primary Schools)

| <i>By Type of School Unit</i> | | | |
|------------------------------------|----------------|----------------|------------|
| School Units | Graduates | | |
| | 2018/19 | 2019/20 | Change (%) |
| Public | 98,455 | 103,051 | 4.7 |
| Private | 5,559 | 5,918 | 6.5 |
| TOTAL | 104,014 | 108,969 | 4.8 |
| <i>By Region</i> | | | |
| NUTS 2 Region | Graduates | | |
| | 2018/19 | 2019/20 | Change (%) |
| Anatoliki Makedonia, Thraki | 5,639 | 5,751 | 2.0 |
| Kentriki Makedonia | 18,407 | 19,264 | 4.7 |
| Dytiki Makedonia | 2,505 | 2,527 | 0.9 |
| Thessalia | 6,962 | 7,456 | 7.1 |
| Ipeiros | 2,875 | 3,001 | 4.4 |
| Ionia Nisia | 2,125 | 2,317 | 9.0 |
| Dytiki Ellada | 6,383 | 6,754 | 5.8 |
| Stereia Ellada | 4,697 | 4,974 | 5.9 |
| Peloponnisos | 5,335 | 5,378 | 0.8 |
| Attiki | 36,313 | 38,222 | 5.3 |
| Voreio Aigaio | 1,848 | 1,924 | 4.1 |
| Notio Aigaio | 3,667 | 3,827 | 4.4 |
| Kriti | 7,258 | 7,574 | 4.4 |
| TOTAL | 104,014 | 108,969 | 4.8 |

EXPLANATORY NOTES

Surveys on Pre-Primary and Primary Education Pre-primary and Primary Education includes Kindergartens and Primary Schools. The relevant surveys are conducted on a yearly basis, with the aim of collecting data on the number of pupils enrolled, the school units and the number of teaching staff.

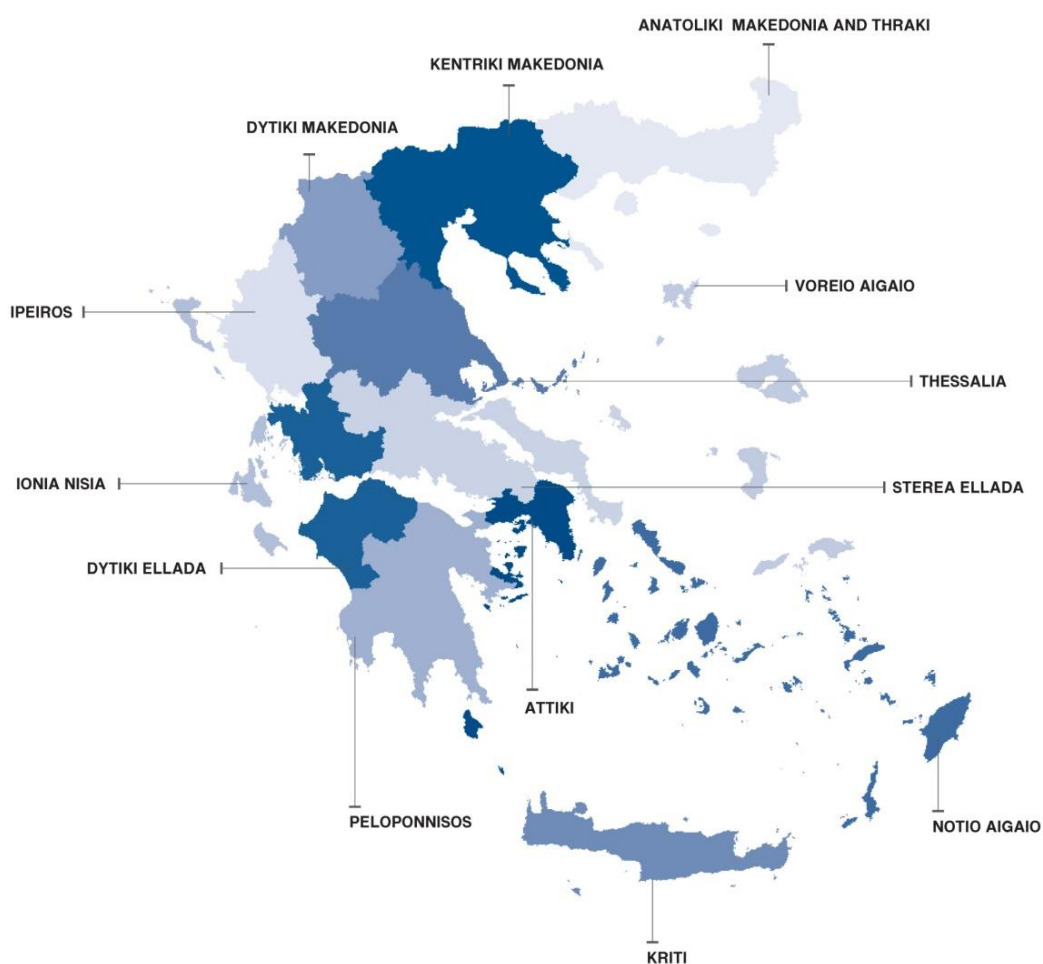
Legal Framework The surveys are conducted by virtue of Regulation 452/2008 of the European Parliament and the Council and implementing Regulation 912/2013 of the European Commission.

Statistical Units The statistical units are the school units.

Coverage Greece total.

Geographical Classification The geographical classification is based on Nomenclature of Territorial Units for Statistics.

Map of the 13 Regions (NUTS 2) of Greece



Dissemination of results The data are posted on a yearly basis on the website of ELSTAT and are published in a relevant Press Release.

Reference period The data of the surveys refer to the end of school year 2019/2020. For comparability reasons, the data of the end of the previous school year 2018/2019 are also provided.

Methodology and coverage Until the school year 2013/2014, the surveys on Pre-Primary and Primary Education used to be census, yearly surveys and they were conducted by ELSTAT.
For the school year 2014/2015 onwards, data of these surveys are collected as follows:

- As regards public school units, the data are extracted from the “live” e-platform “MySchool” of the Ministry of Education and Religious Affairs.
- As regards private school units, data are collected from the questionnaires that are sent to the relevant school units.

References More information, such as tables with the survey results, samples of questionnaires, etc, on the Survey on Pre-Primary and Primary Education can be found on the webpage of ELSTAT www.statistics.gr and at the link: “Statistics” / Population and Social Conditions / Education / Primary Education / Kindergartens (Beginning – End of school year) or Primary Schools (Beginning – End of school year”).