



PRESS RELEASE

CONSUMER PRICE INDEX: September 2021, annual inflation 2.2%

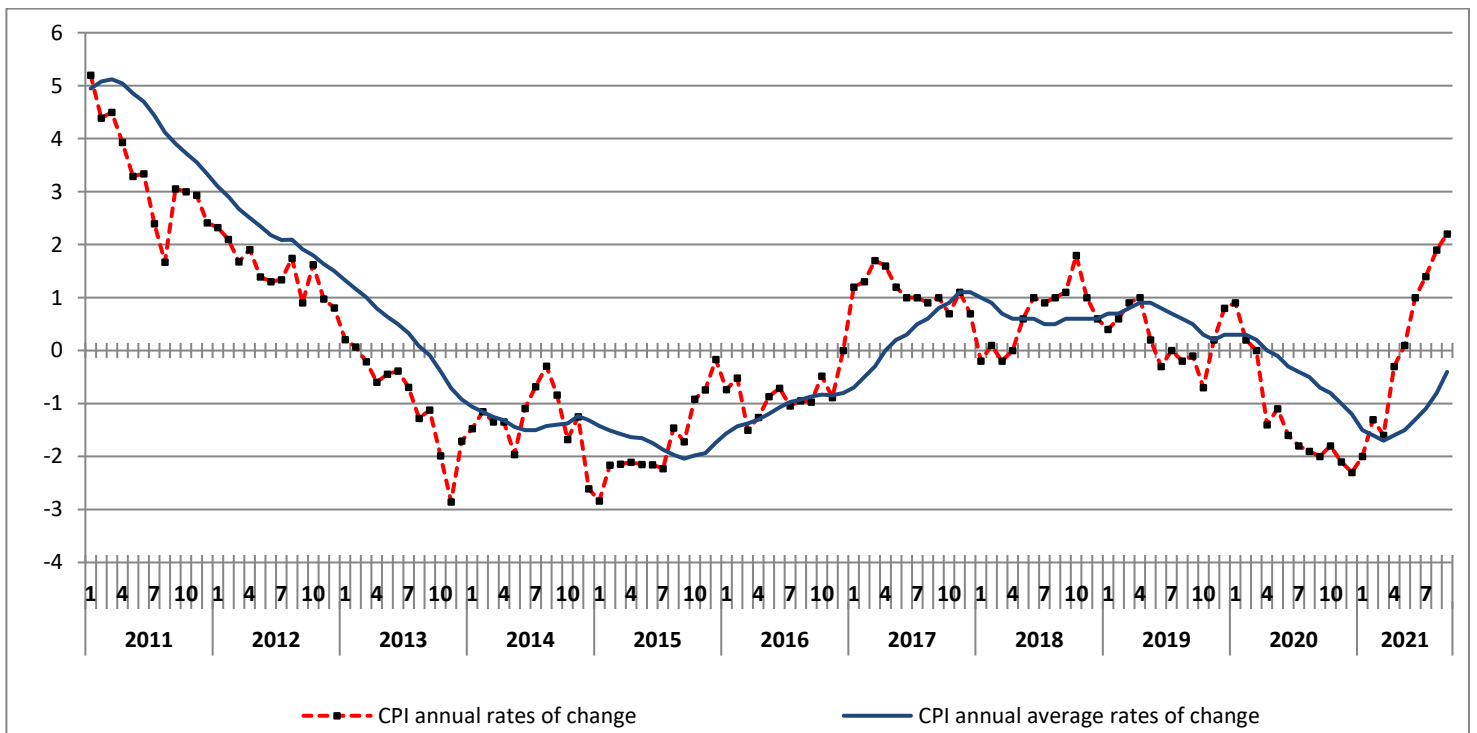
The evolution of the Consumer Price Index (CPI) of September 2021 (reference year 2009=100.0) is depicted as follows:

The CPI in September 2021 compared with September 2020, increased by 2.2%. In September 2020, the annual rate of change of the CPI was -2.0% (Table 2).

The CPI in September 2021 compared with August 2021, increased by 2.4%. In September 2020, the monthly rate of change of the CPI was 2.0% (Table 1).

The average CPI for the twelve - month period from October 2020 to September 2021, compared with the corresponding index for the period October 2019 to September 2020 decreased by 0.4%. The annual rate of change of the average CPI between the twelve - month period October 2019 to September 2020 in comparison to the period October 2018 to September 2019 was -0.7% (Table 3).

Graph 1. Annual and annual average rates of change (%) of CPI



Information on methodological issues:
Population, Employment and
Cost of Living Statistics Division
Section of Retail Price Indices
Acting Head of Section: A. Kourtaki
Tel: +30 213 135 2128
email: a.kourtaki@statistics.gr

Information for data provision:
Tel: +30 213 135 2022, 2308, 2310
email: data.dissem@statistics.gr

Analysis of changes of the CPI: September 2021

I. Monthly rates of change: September 2021 compared with August 2021 (Tables 1, 4)

The 2.4% increase of the Overall CPI in September 2021, compared with the corresponding index in August 2021 is, mainly, due to the changes in the groups of goods and services as follows:

1. An increase of:

- 1.2% in the group Food and non-alcoholic beverages, due to the increase, mainly, in the prices of: *bread, beef, lamb and goat, fresh fish, olive oil, fresh fruits, fresh vegetables*. This increase was partly offset by the decrease, mainly, in the prices of: *poultry, dried salted or smoked meat, cheese*.
- 40.4% in the group Clothing and footwear, due to the recovery of prices up to normal levels as before the summer sales period.
- 0.3% in the group Housing, due to the increase, mainly, in the prices of *natural gas*.
- 2.1% in the group Household equipment, due to the recovery of prices up to normal levels as before the summer sales period and the increase, mainly, in the prices of: *non-durable household articles, domestic services*.
- 0.3% in the group Health, due to the increase, mainly, in the prices of: *medical, dental and paramedical services, hospital care*.
- 0.2% in the group Transport, due to the increase, mainly, in the prices of: *petrol, tickets for passenger transport by air*.
- 0.4% in the group Recreation and culture, due to the increase, mainly, in the prices of *major durables for outdoor recreation*.
- 0.8% in the group Education, due to the increase, mainly, in the prices of *fees of secondary education*.
- 0.4% in the group Hotel-Cafés-Restaurants, due to the increase, mainly, in the prices of *restaurants- confectioneries-café*.
- 0.8% in the group Miscellaneous goods and services, due to the recovery of *personal effects* prices up to normal levels as before the summer sales period and the increase, mainly, in the prices of *other appliances and articles for personal care*.

2. A decrease of:

- 0.2% in the group Communication, due to the decrease, mainly, in the prices of *telephone services*.

II. Annual rates of change: September 2021 compared with September 2020 (Tables 2, 5)

The 2.2% increase of the Overall CPI in September 2021, compared with the corresponding index in September 2020 is, mainly, due to the changes in the groups of goods and services as follows:

1. An increase of:

- 3.1% in the group Food and non-alcoholic beverages due to the increase, mainly, in the prices of: *bread, lamb and goat, fresh fish, eggs, olive oil, other edible oils, fresh fruit, fresh vegetables, chocolates-chocolate products*. This increase was partly offset by the decrease, mainly, in the prices of: *breakfast cereals, pork, dried salted or smoked meat, yoghurt, jams-marmalades-honey*.
- 4.7% in the group Housing, due to the increase, mainly, in the prices of: *electricity, natural gas, heating oil*.
- 0.6% in the group Household equipment, due to the increase, mainly, in the prices of *domestic services*. This increase was partly offset by the decrease, mainly, in the prices of: *household textiles, household appliances and repair*.
- 0.1% in the group Health, due to the increase, mainly, in the prices of: *medical, dental and paramedical services, hospital care*. This increase was partly offset by the decrease, mainly, in the prices of *pharmaceutical products*.
- 7.8% in the group Transport, due to the increase, mainly, in the prices of: *fuels and lubricants, new motorcars, tickets for passenger transport by air*.
- 0.9% in the group Education, due to the increase, mainly, in the prices of *fees of secondary education*.
- 0.5% in the group Hotel-Cafés-Restaurants, due to the increase, mainly, in the prices of: *restaurants- confectioneries-café, hotels-motels-inns*.

2. A decrease of:

- 0.5% in the group Clothing and footwear, due to the decrease in the prices of clothing and footwear.
- 2.5% in the group Communication, due to the decrease, mainly, in the prices of *telephone services*.
- 0.4% in the group Recreation and culture, due to the decrease, mainly, in the prices of *major durables for outdoor recreation*.
- 0.8% in the group Miscellaneous goods and services, due to the decrease, mainly, in the prices of: *other appliances and articles for personal care, motor vehicle insurance*.

Table 1. Monthly rates of change of CPI
(Reference year: 2009=100.0)

Main groups of goods and services	Weights 2021 (%)	2021	2021	Rate of change %	2020	2020	Rate of change %
		September	August		September	August	
1. Food & non-alcoholic beverages	232.58	109.77	108.46	1.2	106.48	105.28	1.1
2. Alcoholic beverages and tobacco	34.27	148.79	148.54	0.2	148.92	149.09	-0.1
3. Clothing and footwear	59.63	102.01	72.66	40.4	102.47	74.62	37.3
4. Housing	142.22	118.66	118.27	0.3	113.34	113.26	0.1
5. Household equipment	47.87	86.46	84.65	2.1	85.95	85.03	1.1
6. Health	90.59	97.89	97.64	0.3	97.84	98.09	-0.3
7. Transport	124.20	125.57	125.26	0.2	116.51	117.44	-0.8
8. Communication	44.20	102.37	102.60	-0.2	105.04	105.30	-0.2
9. Recreation and culture	38.30	85.93	85.60	0.4	86.23	86.19	0.1
10. Education	37.15	89.74	89.00	0.8	88.91	88.98	-0.1
11. Hotels-Cafés-Restaurants	70.17	109.50	109.09	0.4	108.92	108.92	0.0
12. Miscellaneous goods and services	78.84	89.08	88.33	0.8	89.76	89.33	0.5
Overall Index	1000.00	107.73	105.24	2.4	105.40	103.30	2.0

Note: The indices are rounded up to two decimal figures when published and percentage changes up to one decimal figure when published.

Graph 2. Annual and monthly rates of change (%) of CPI

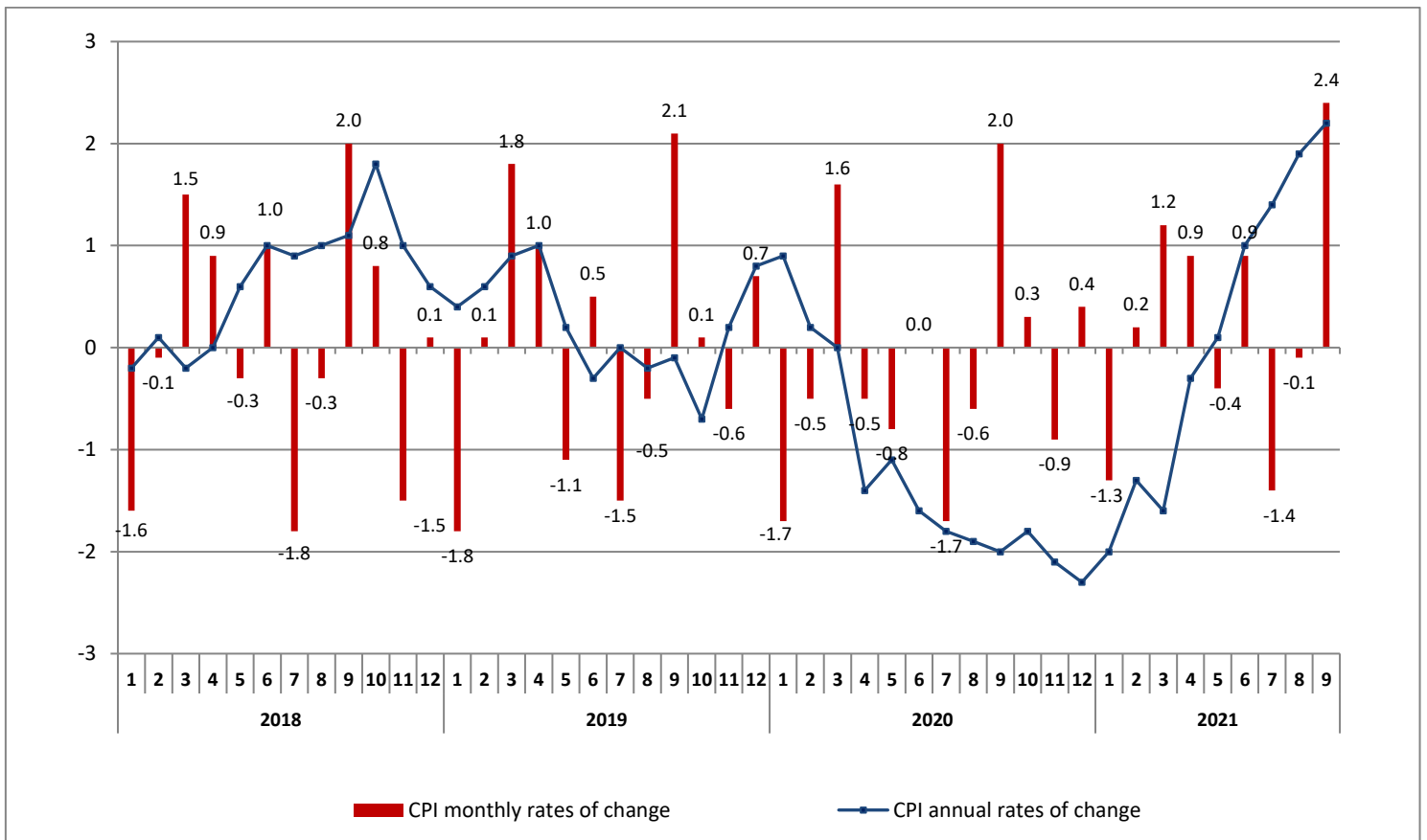


Table 2. Inflation – Annual rates of change of CPI
(Reference year: 2009=100.0)

I: September 2021/2020

Main groups of goods and services	September		Rate of change (%)	Impact
	2021	2020		
1. Food and non-alcoholic beverages	109.77	106.48	3.1	0.7279
2. Alcoholic beverages and tobacco	148.79	148.92	-0.1	-0.0070
3. Clothing and footwear	102.01	102.47	-0.5	-0.0387
4. Housing	118.66	113.34	4.7	0.6483
5. Household equipment	86.46	85.95	0.6	0.0331
6. Health	97.89	97.84	0.1	0.0025
7. Transport	125.57	116.51	7.8	0.9643
8. Communication	102.37	105.04	-2.5	-0.1119
9. Recreation and culture	85.93	86.23	-0.4	-0.0131
10. Education	89.74	88.91	0.9	0.0345
11. Hotels-Cafés-Restaurants	109.50	108.92	0.5	0.0181
12. Miscellaneous goods and services	89.08	89.76	-0.8	-0.0461
Overall Index	107.73	105.40	2.2	

II: September 2020/2019

Main groups of goods and services	September		Rate of change (%)	Impact
	2020	2019		
1. Food and non-alcoholic beverages	106.48	103.94	2.4	0,4938
2. Alcoholic beverages and tobacco	148.92	148.80	0.1	0,0018
3. Clothing and footwear	102.47	102.49	0.0	-0,0031
4. Housing	113.34	120.58	-6.0	-0,8519
5. Household equipment	85.95	86.85	-1.0	-0,0449
6. Health	97.84	99.07	-1.2	-0,0951
7. Transport	116.51	126.52	-7.9	-1,1431
8. Communication	105.04	107.63	-2.4	-0,1040
9. Recreation and culture	86.23	87.30	-1.2	-0,0481
10. Education	88.91	88.41	0.6	0,0183
11. Hotels-Cafés-Restaurants	108.92	109.98	-1.0	-0,1045
12. Miscellaneous goods and services	89.76	91.16	-1.5	-0,1013
Overall Index	105.40	107.53	-2.0	

Note: The indices are rounded up to two decimal figures when published and percentage changes up to one decimal figure when published.

**Table 3. Comparisons of the overall CPI
(Reference year: 2009=100.0)**

Year and month	Overall Index	Monthly rates of change %	Annual rates of change Inflation %	Annual average index (moving average)	Annual average rates of change %
2018: 1	104.58	-1.6	-0.2	105.81	1.0
2	104.52	-0.1	0.1	105.81	0.9
3	106.08	1.5	-0.2	105.79	0.7
4	107.05	0.9	0.0	105.80	0.6
5	106.70	-0.3	0.6	105.85	0.6
6	107.76	1.0	1.0	105.94	0.6
7	105.84	-1.8	0.9	106.01	0.5
8	105.49	-0.3	1.0	106.09	0.5
9	107.61	2.0	1.1	106.19	0.6
10	108.44	0.8	1.8	106.35	0.6
11	106.81	-1.5	1.0	106.43	0.6
12	106.92	0.1	0.6	106.48	0.6
Annual average	106.48	-	-	106.48	0.6
2019: 1	105.04	-1.8	0.4	106.52	0.7
2	105.17	0.1	0.6	106.58	0.7
3	107.08	1.8	0.9	106.66	0.8
4	108.14	1.0	1.0	106.75	0.9
5	106.95	-1.1	0.2	106.77	0.9
6	107.46	0.5	-0.3	106.75	0.8
7	105.89	-1.5	0.0	106.75	0.7
8	105.31	-0.5	-0.2	106.74	0.6
9	107.53	2.1	-0.1	106.73	0.5
10	107.67	0.1	-0.7	106.66	0.3
11	107.05	-0.6	0.2	106.68	0.2
12	107.76	0.7	0.8	106.75	0.3
Annual average	106.75	-	-	106.75	0.3
2020: 1	105.94	-1.7	0.9	106.83	0.3
2	105.41	-0.5	0.2	106.85	0.3
3	107.08	1.6	0.0	106.85	0.2
4	106.59	-0.5	-1.4	106.72	0.0
5	105.73	-0.8	-1.1	106.62	-0.1
6	105.77	0.0	-1.6	106.48	-0.3
7	103.97	-1.7	-1.8	106.32	-0.4
8	103.30	-0.6	-1.9	106.15	-0.5
9	105.40	2.0	-2.0	105.97	-0.7
10	105.77	0.3	-1.8	105.81	-0.8
11	104.84	-0.9	-2.1	105.63	-1.0
12	105.26	0.4	-2.3	105.42	-1.2
Annual average	105.42	-	-	105.42	-1.2
2021: 1	103.86	-1.3	-2.0	105.25	-1.5
2	104.08	0.2	-1.3	105.14	-1.6
3	105.33	1.2	-1.6	104.99	-1.7
4	106.29	0.9	-0.3	104.97	-1.6
5	105.87	-0.4	0.1	104.98	-1.5
6	106.86	0.9	1.0	105.07	-1.3
7	105.38	-1.4	1.4	105.19	-1.1
8	105.24	-0.1	1.9	105.35	-0.8
9	107.73	2.4	2.2	105.54	-0.4

Note: The indices are rounded up to two decimal figures when published and percentage changes up to one decimal figure when published.

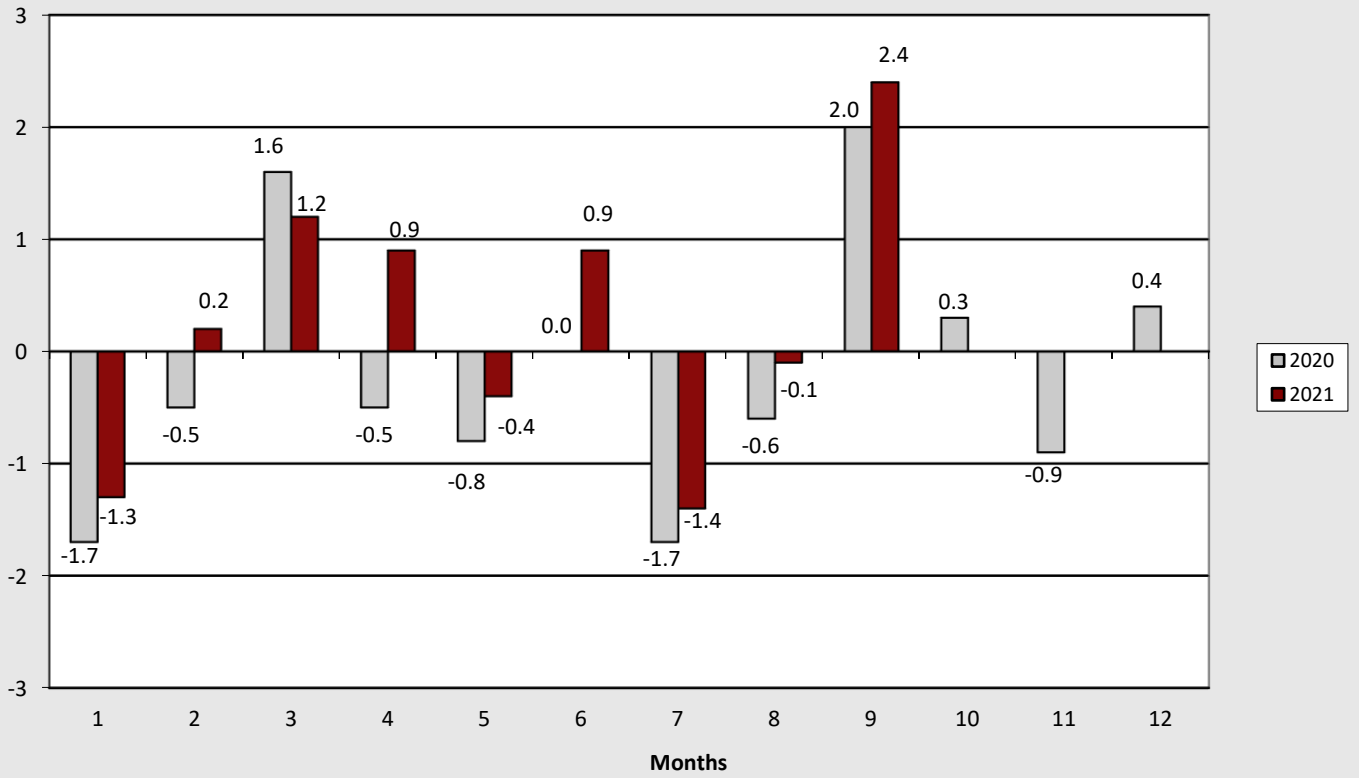
**Table 4. Major price changes from index comparison between
September 2021 and August 2021 and their impact
on the Overall CPI**

Goods and services	Rate of change (%)	Impact
Bread	2.5	0.04
Beef	0.9	0.02
Lamb and goat	7.3	0.04
Fresh fish	2.1	0.02
Olive oil	11.8	0.11
Fresh fruits	2.2	0.04
Fresh vegetables	6.9	0.11
Poultry	-2.0	-0.02
Dried salted or smoked meat	-2.9	-0.01
Cheese	-2.8	-0.05
Natural gas	12.8	0.04
Non-durable household articles	1.1	0.02
Domestic services	1.9	0.02
Medical, dental and paramedical services	0.5	0.01
Hospital care	0.4	0.01
Petrol	0.3	0.01
Passenger transport by air	1.8	0.01
Telephone services	-0.2	-0.01
Major durables for outdoor recreation	1.3	0.01
Secondary education	1.3	0.03
Restaurants - confectioneries - cafes	0.5	0.03
Other appliances and articles for personal care	1.6	0.06
Recovery of prices up to normal levels as before the summer sales period	-	1.82

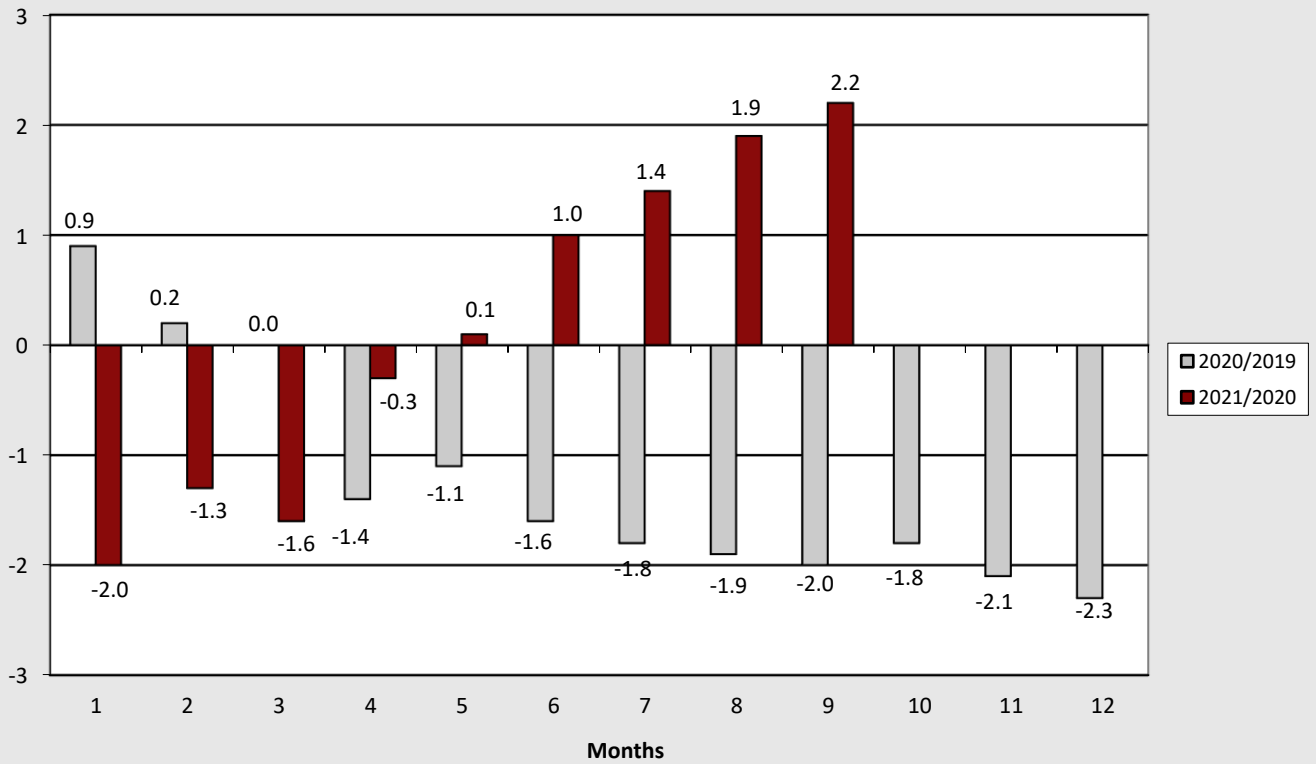
**Table 5. Major price changes from index comparison between
September 2021 and September 2020 and their impact
on the Overall CPI**

Goods and services	Rate of change (%)	Impact
Bread	2.6	0.04
Lamb and goat	17.5	0.09
Fresh fish	7.9	0.09
Eggs	3.5	0.01
Olive oil	18.4	0.16
Other edible oils	14.0	0.02
Fresh fruit	1.2	0.04
Fresh vegetables	21.1	0.28
Chocolates-chocolate products	4.4	0.01
Breakfast cereals	-4.5	-0.01
Pork	-2.6	-0.02
Dried salted or smoked meat	-3.9	-0.02
Yoghurt	-2.7	-0.01
Jams-marmalades-honey	-2.9	-0.01
Clothing and footwear	-0.5	-0.04
Electricity	0.8	0.03
Natural gas	108.5	0.20
Heating oil	28.9	0.40
Domestic services	2.8	0.03
Household textiles	-2.0	-0.01
Household appliances and repair	-1.6	-0.01
Medical, dental and paramedical services	0.8	0.02
Hospital care	0.6	0.02
Pharmaceutical products	-1.1	-0.03
Fuels and lubricants	18.1	0.79
New motorcars	2.4	0.05
Passenger transport by air	20.9	0.10
Telephone services	-2.5	-0.10
Major durables for outdoor recreation	-1.3	-0.01
Secondary education	1.4	0.03
Restaurants-confectioneries-cafes	0.7	0.04
Hotels-motels-inns	9.5	-0.03
Other appliances and articles for personal care	-1.1	-0.01
Motor vehicle insurance	-1.9	-0.03

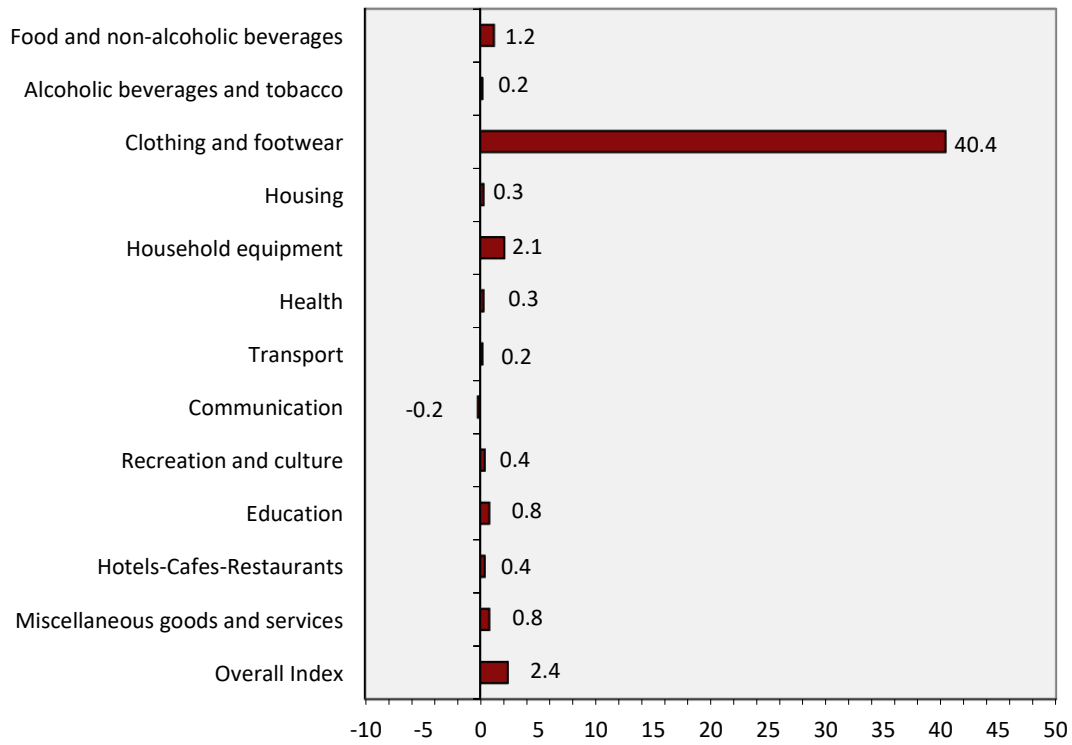
Graph 3. Monthly rates of change (%) of the overall CPI, 2020 and 2021



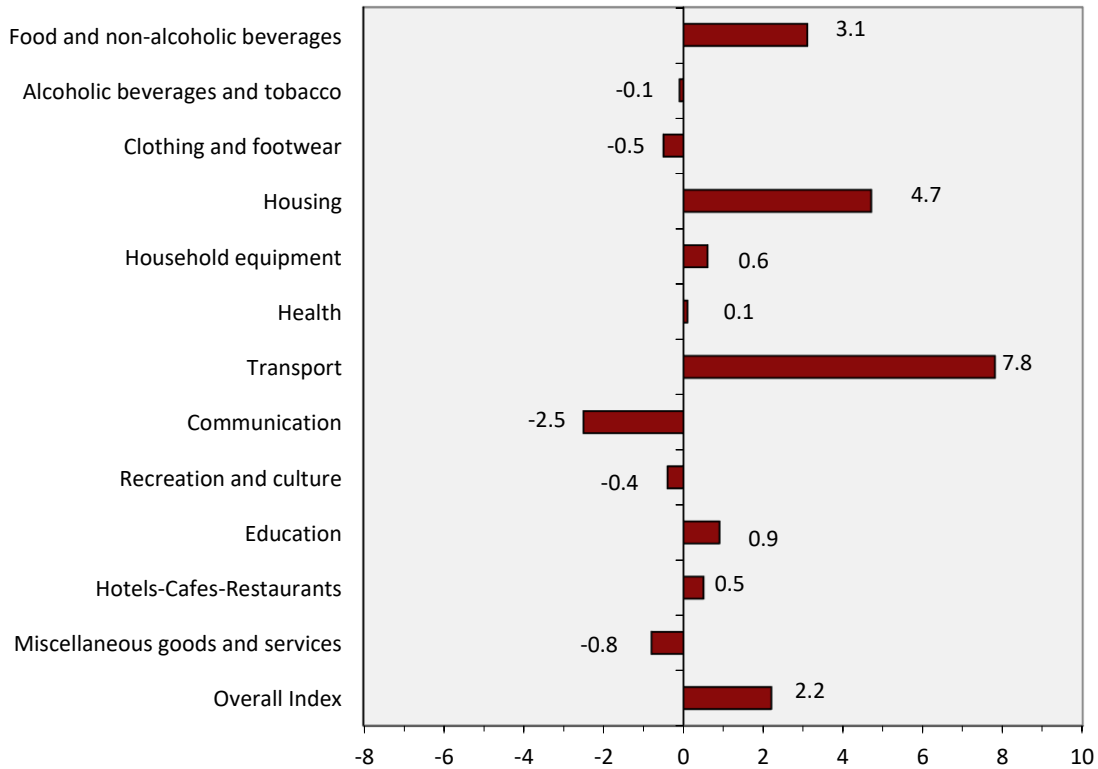
Graph 4. Annual rates of change (%) of the overall CPI, 2020 and 2021



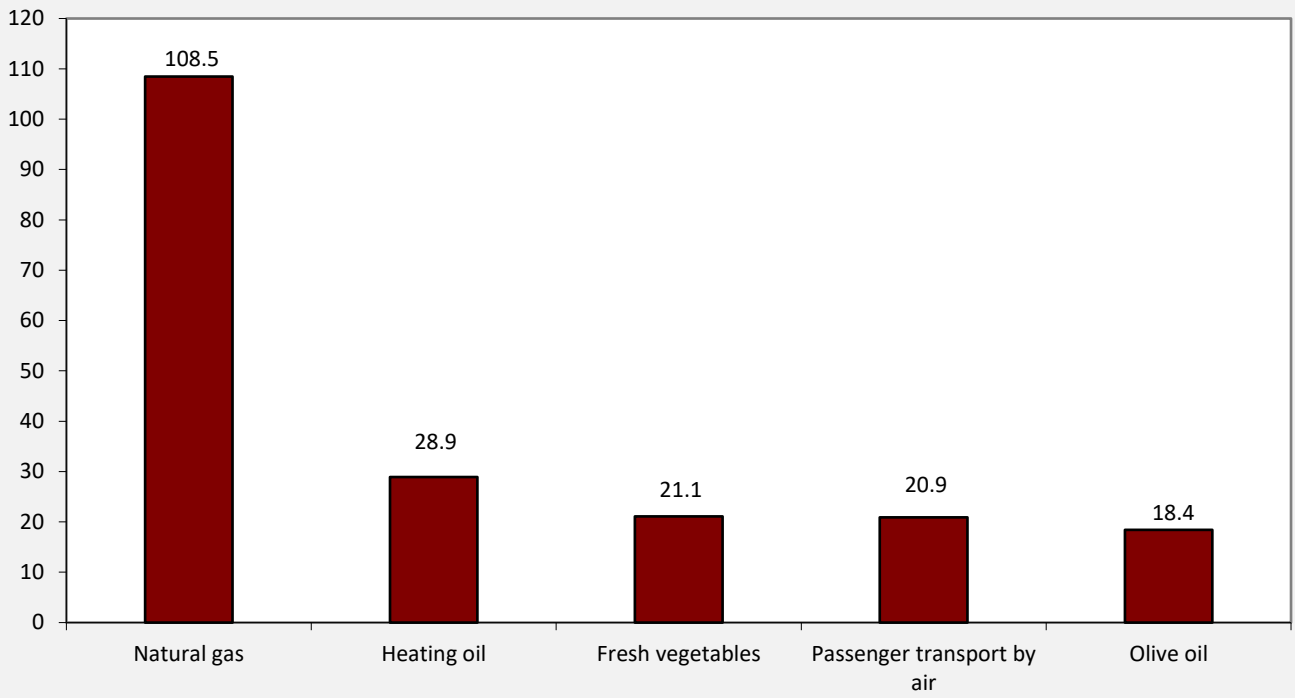
Graph 5. Monthly rates of change (%) of CPI between September 2021 and August 2021



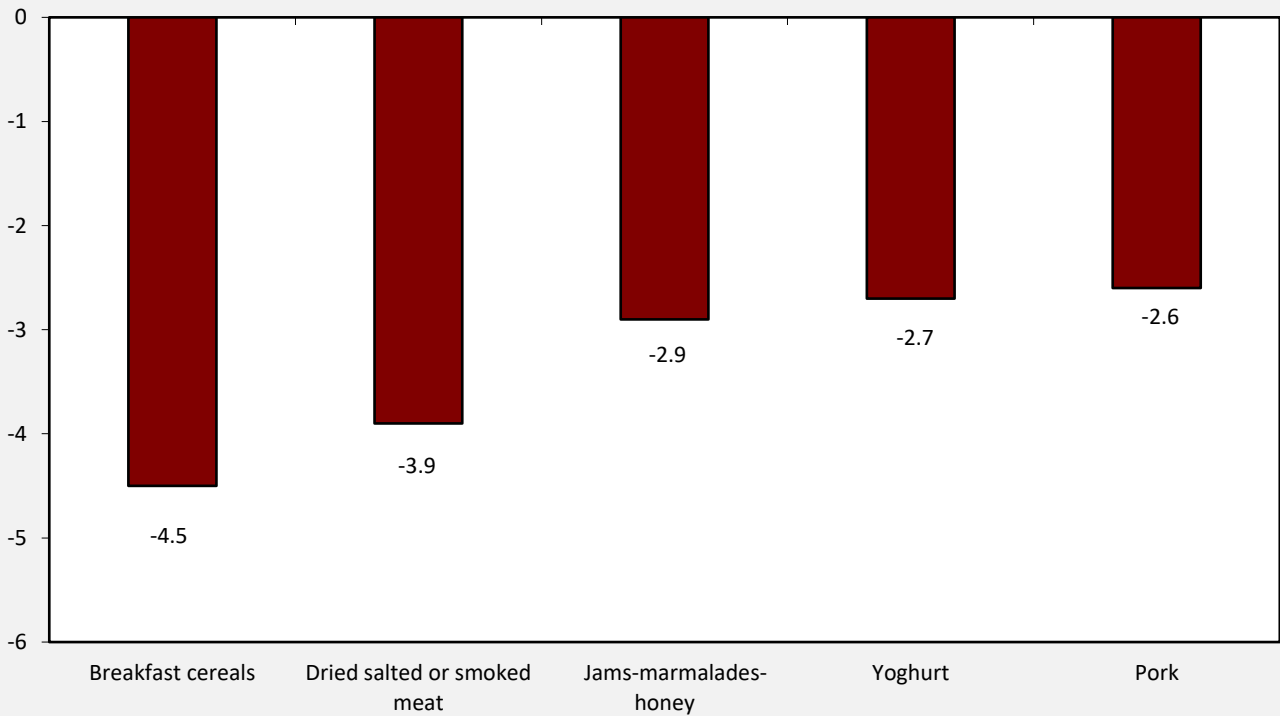
Graph 6. Annual rates of change (%) of CPI between September 2021 and September 2020



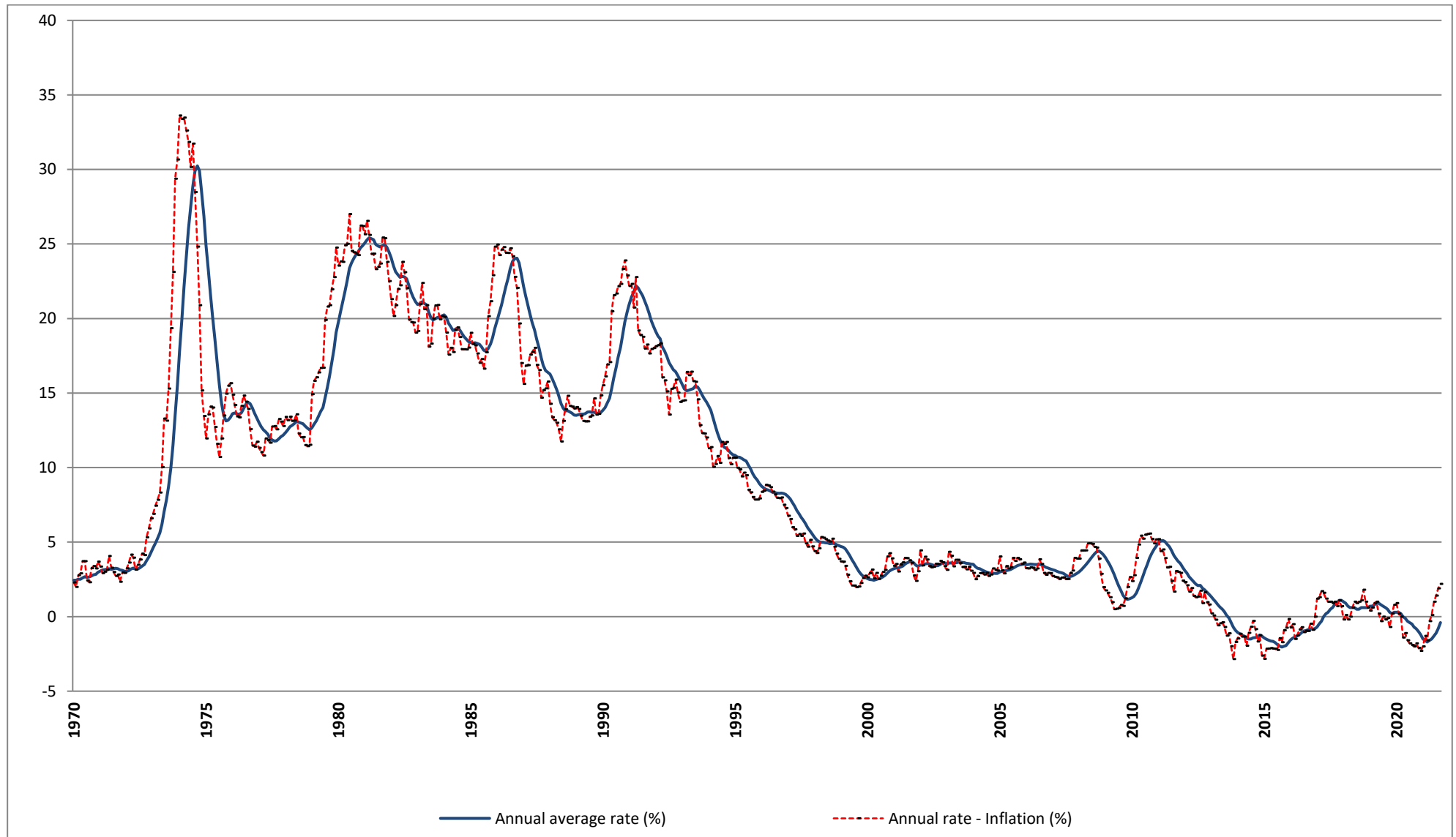
Graph 7. CPI highest annual increases (%)



Graph 8. CPI highest annual decreases (%)



Graph 9. Historical evolution of CPI, 1970 – 2021



METHODOLOGICAL NOTES

Generally	The Consumer Price Index (CPI) is compiled by the Hellenic Statistical Authority (ELSTAT) since 1959. Until the year 2000, the CPI referred to the urban areas of the Country, while from 2001 onwards it refers to the whole Country covering urban, semi-urban and rural areas.
Purpose of the index	The purpose of the CPI is to measure the general level of prices of goods and services purchased by the average Greek household.
Legal basis	Law 3832/2010 .
Reference period	Month.
Base	December of the previous year.
Reference year	2009=100.0.
Chain linking Index	The CPI index follows the chain linking method, introducing new weights annually and having as a base the December of the previous year. The weights are estimated on the basis of the most recent available data of the Household Budget Survey (HBS), extrapolated to the prices of December. The CPI, adjusted on an annual basis to the most recent consumption expenditure pattern of the private households of the Country, ensures the representativeness of goods and services, which compose the "basket" of purchases of the average household.
Geographical and population coverage of the CPI	The CPI refers to the whole Country and covers the resident households of the territory excluding collective households (hospitals, homes for the elderly, boarding houses, prisons, etc.) and non-resident households (tourists) in the Country.
Classification of items	The classification of the CPI items (goods and services) is based on the international classification COICOP (Classification of Individual Consumption by Purpose) as this has been adapted to the needs of the HICPs of the EU Member States with the COICOP5/HICP classification.
Weights of items	The weights of CPI items are updated every year, on the basis of the most recent available data of HBS. The weights are calculated as the share (%) of the expenditures for each group, subgroup and item (good or service) to the total household expenditure of the average household.
Price collection Cities	The CPI prices are collected in 27 cities with representative markets for the coverage of the 13 Regions of the Country. The selection criteria of the price collection cities are the size and the particularities of their markets, the possibility of continuous price collection, the comparability of the index and the cost of price collection.
Population weights	The calculation of the population weights by regions is based on the population data of the 2011 General Population Census and the expenditure data of the latest available HBS by regions.
Selection of items	The composition of the "household basket" i.e. the selection of goods and services which are included in the calculation of CPI is updated annually, using the results of the latest available HBS, other market research, etc. The chain linking methodology allows the change of items of the household basket on an annual basis, in order to ensure the representativeness of the items involved in the calculation of groups and subgroups of CPI.
Price collection-Outlets	The prices collection outlets are retail stores, enterprises providing services, street markets etc. which are considered representative of the branches of shops, where the households make their purchases in the 27 selected cities. The methodology allows the renewal of price collection sources, annually, in order to maintain their representativeness in the calculation of CPI. Prices are collected by employees of ELSTAT as well as by external price collectors, hired on a temporary basis. They pay a visit to the selected outlets within a specific time period of a month (monthly prices) or on a specific day of the week (weekly prices). The collected prices correspond to the prices actually faced by the consumer.
Specification-Substitution of items	All the collected items are defined by the specification, that is the particular characteristics which determine the quality, the trade show and the identity, in general, of good products (such as brand, weight, package etc), in order to avoid any price variations attributable to differences in the specification. Once a specified item (good or service) is no longer available in the market or has ceased to be important, as regards consumption, it is substituted by a newly specified item, which has taken its place in the market.

Calculation of the Consumer Price Index

The Consumer Price Index is a Laspeyres-type index and it is calculated based on December of the previous year.

Implementation of formula in five-digit level of COICOP5

Specifically, if the five-digit item h includes q price collected items, then its index in month t of year T, $R_h^{t,T}$, is given by the following formula:

$$R_h^{t,T} = R_h^{12,T-1} \left[\frac{\sum_{i=1}^q w_i^T R_i^{t,T} / R_i^{12,T-1}}{\sum_{i=1}^q w_i^T} \right],$$

where:

$R_h^{12,T-1}$ = the index of the five-digit item h, in December of year T-1.

w_i^T = the weight of the price collected item i, in year T.

$R_i^{t,T}$ = the index of the price collected item i, in month t of year T.

$R_i^{12,T-1}$ = the index of the price collected item i, in December of year T-1.

A similar methodology is followed for the calculation of indices in the upper levels (two-digit, three-digit and four-digit) of COICOP5 and the calculation of the overall CPI as well.

Publication of data The published CPI time series (reference year 2009=100.0), covers the period from January 1959 onwards. The CPI data are released each month as scheduled, in accordance with the Press Releases Calendar of ELSTAT, with the [Press Release and the tables](#).

References Further information concerning the methodology and the compilation of the CPI is available in the [Methodological Publication CPI \(2009=100.0\)](#) and the [Single Integrated Metadata Structure \(SIMS\)](#).