



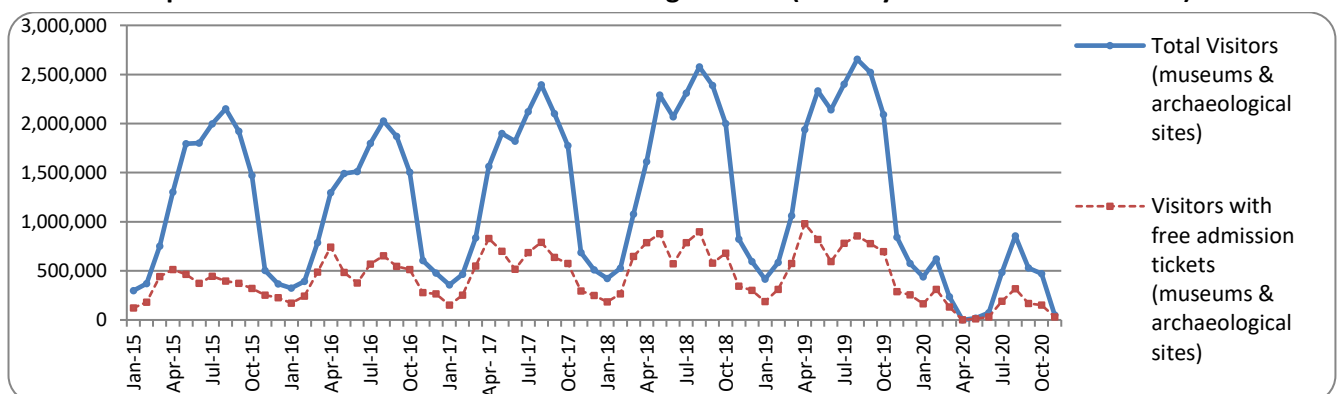
## PRESS RELEASE

### SURVEY ON MUSEUMS AND ARCHAEOLOGICAL SITES ATTENDANCE NOVEMBER 2020 AND JANUARY – DECEMBER 2020

The Hellenic Statistical Authority (ELSTAT) announces the results of the *Survey on Museums and Archaeological Sites Attendance* for November 2020. More specifically:

- Museums, whose operation was gradually suspended from November 1<sup>st</sup> 2020 in the framework of the preventative measures against the Covid-19 pandemic, operated for a limited time during November 2020. Compared with November 2019, museums recorded a decrease of 96.7% at the number of visitors, while a decrease of 95.6% was observed in the number of free admission visitors and a decrease of 97.4% in the corresponding receipts (Table 1).
- Similarly, Archaeological Sites, whose operation was suspended from November 7<sup>th</sup> 2020 in the framework of the preventative measures against the Covid-19 pandemic, operated for six (6) days during November 2020. Compared with the corresponding month of 2019, recorded a decrease of 92.7% at the number of visitors, while a decrease of 83.5% was observed in the number of free admission visitors and a 97.1% decrease in the corresponding receipts (Table 1).
- During the eleven-month period from January to November 2020 compared to the corresponding period of 2019, a decrease of 80.5% was observed in the number of visitors of Museums, while a decrease of 79.5% was recorded in the number of free admission visitors and an 82.2% decrease in the relevant receipts, taking into consideration that the operation of Museums had been suspended from March 14<sup>th</sup> until June 15<sup>th</sup> 2020 and from November 1<sup>st</sup> 2020 onwards, gradually (Table 2). Given the suspension of operation, museums remained closed during December 2020. During 2020 compared with 2019, a decrease of 81.3% was observed in the number of visitors of Museums, while a decrease of 80.6% was recorded in the number of free admission visitors and an 82.7% decrease in the relevant receipts (Table 3).
- As regards Archaeological sites, during the eleven-month period from January to November 2020 compared to the corresponding period of 2019, a decrease of 80.0% was recorded in the number of visitors, while a 77.3% decrease was observed in the number of free admission visitors and an 83.8% decrease in the relevant receipts, taking into consideration that the operation of Archaeological sites had been suspended from March 14<sup>th</sup> to May 17<sup>th</sup> 2020 and from November 7<sup>th</sup> 2020 onwards (Table 2). Given the suspension of operation, Archaeological sites remained closed during December 2020. During 2020 compared with 2019, a decrease of 80.4% was recorded in the number of visitors, while a 77.9% decrease was observed in the number of free admission visitors and an 84.1% decrease in the relevant receipts (Table 3).

**Graph 1: Visitors of Museums and Archaeological sites (January 2015 – November 2020)**



**Information on methodological issues:**

Sectoral Statistics Division  
Tourism and Cultural Statistics Section  
Head of the Section: Asimina Katri  
Tel: +30 213 135 2168  
e-mail: [a.katri@statistics.gr](mailto:a.katri@statistics.gr)

**Information for data provision:**

Tel. +30 213 135 2022, 2308, 2310  
e-mail: [data.dissem@statistics.gr](mailto:data.dissem@statistics.gr)

**TABLE 1: VISITORS OF MUSEUMS AND ARCHAEOLOGICAL SITES - TOTAL RECEIPTS  
(NOVEMBER 2019 & NOVEMBER 2020)**

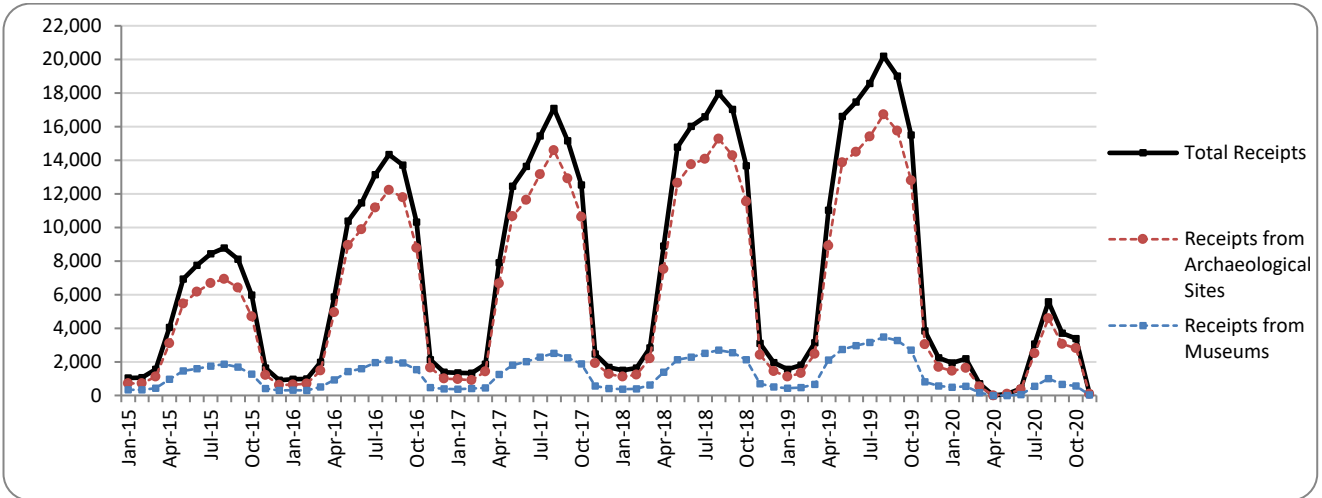
<b>I. NUMBER OF VISITORS</b>			
<b>Museums and Archaeological sites</b>	<b>2019</b>	<b>2020 <sup>(2)</sup></b>	<b>Change 2020/2019</b>
<b>Total number of visitors (A+B)</b>	<b>841,219</b>	<b>49,239</b>	<b>-94.1%</b>
<b>A. Museums (C+E)</b>	<b>308,084</b>	<b>10,072</b>	<b>-96.7%</b>
Acropolis Museum	95,200	2,582	-97.3%
National Archaeological	37,660	851	-97.7%
Ancient Olympia	5,460	541	-90.1%
Palace of the Grand Master (Rhodes)	11,938	838	-93.0%
Herakleion Archaeological (Crete)	20,104	885	-95.6%
White Tower	16,956	0	-100.0%
Delphi	13,309	572	-95.7%
Other museums	107,457	3,803	-96.5%
<b>B. Archaeological Sites (D+F)</b>	<b>533,135</b>	<b>39,167</b>	<b>-92.7%</b>
Epidavros <sup>(1)</sup>	16,758	1,107	-93.4%
The Acropolis of Mycenae & Atreus' Treasure	18,670	1,125	-94.0%
The Acropolis of Athens	209,113	11,941	-94.3%
Sounio	16,506	1,723	-89.6%
The Acropolis of Lindos	5,562	1,456	-73.8%
Royal Tombs of Vergina	9,048	305	-96.6%
Ancient Olympia	16,431	970	-94.1%
Knossos (Crete)	34,038	2,328	-93.2%
Phaistos (Crete)	10,288	245	-97.6%
Ancient Korinthos <sup>(1)</sup>	11,113	652	-94.1%
Mystras <sup>(1)</sup>	4,353	977	-77.6%
Delphi	15,202	1,404	-90.8%
Other archaeological sites	166,053	14,934	-91.0%
<b>II. VISITORS WHO PAID TICKET</b>			
	<b>2019</b>	<b>2020</b>	<b>Change 2020/2019</b>
<b>Total number of visitors who paid ticket (C+D)</b>	<b>553,976</b>	<b>17,933</b>	<b>-96.8%</b>
C. Museums	175,478	4,253	-97.6%
D. Archaeological sites	378,498	13,680	-96.4%
<b>III. VISITORS WITH FREE ADMISSION TICKETS</b>			
	<b>2019</b>	<b>2020</b>	<b>Change 2020/2019</b>
<b>Total number of visitors with free admission ticket (E+F)</b>	<b>287,243</b>	<b>31,306</b>	<b>-89.1%</b>
E. Museums	132,606	5,819	-95.6%
F. Archaeological sites	154,637	25,487	-83.5%
<b>IV. RECEIPTS (euros)</b>			
	<b>2019</b>	<b>2020</b>	<b>Change 2020/2019</b>
<b>Total Receipts (G+H)</b>	<b>3,850,369</b>	<b>108,822</b>	<b>-97.2%</b>
G. Museums	812,191	21,233	-97.4%
H. Archaeological sites	3,038,178	87,589	-97.1%

<sup>(1)</sup> Flat rate ticket, valid both for the museum and the archaeological site.

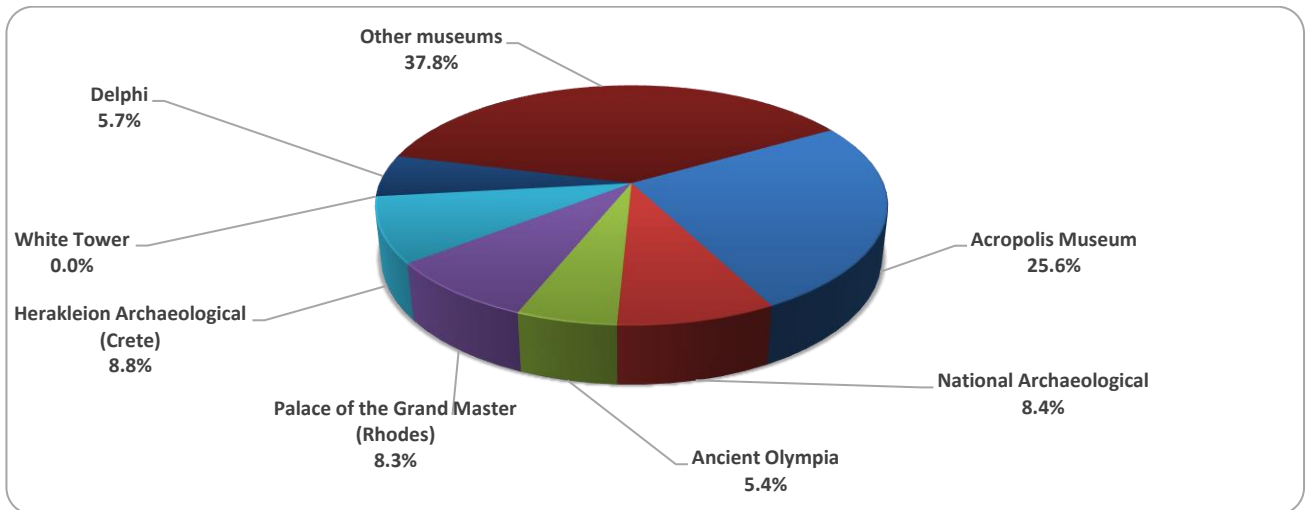
<sup>(2)</sup> The operation of Museums and Archaeological sites was gradually suspended from November 1st 2020 onwards, in the framework of the preventative measures against the Covid-19 pandemic.

The following graphs depict the evolution of the receipts (Graph 2), as well as the number of visitors by Museum and Archaeological Site (Graphs 3 and 4).

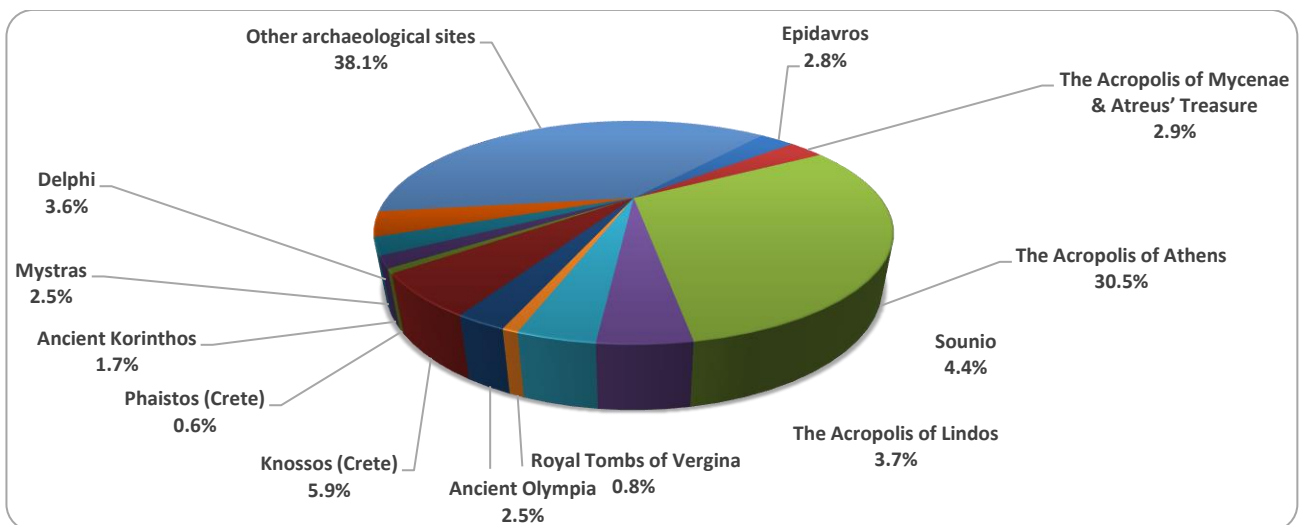
**Graph 2: Receipts from Museums and Archaeological Sites (January 2015 – November 2020)**  
(in thousand euro)



**Graph 3: Percentage distribution of visitors by Museum, November 2020**



**Graph 4: Percentage distribution of visitors by Archaeological site, November 2020**



**TABLE 2: VISITORS OF MUSEUMS AND ARCHAEOLOGICAL SITES - TOTAL RECEIPTS  
(2018, 2019, JANUARY-NOVEMBER 2019, 2020)**

<b>I. VISITORS</b>					
Museums and Archaeological sites	2018	2019	JANUARY-NOVEMBER		change 2020/2019
			2019	2020 <sup>(2)</sup>	
<b>Total number of visitors (A+B)</b>	<b>18,603,576</b>	<b>19,559,278</b>	<b>18,982,809</b>	<b>3,772,828</b>	<b>-80.1%</b>
<b>A. Museums (C+E)</b>	<b>5,702,211</b>	<b>5,895,927</b>	<b>5,645,811</b>	<b>1,100,904</b>	<b>-80.5%</b>
Acropolis Museum	1,774,304	1,755,435	1,674,911	325,969	-80.5%
National Archaeological	594,219	608,876	579,626	98,175	-83.1%
Ancient Olympia	156,658	159,348	156,469	21,956	-86.0%
Palace of the Grand Master (Rhodes)	242,759	263,958	261,582	54,572	-79.1%
Herakleion Archaeological (Crete)	555,031	660,533	646,667	63,027	-90.3%
White Tower	225,944	251,760	230,689	62,007	-73.1%
Delphi	249,754	275,993	266,006	41,984	-84.2%
Other museums	1,903,542	1,920,024	1,829,861	433,214	-76.3%
<b>B. Archaeological Sites (D+F)</b>	<b>12,901,365</b>	<b>13,663,351</b>	<b>13,336,998</b>	<b>2,671,924</b>	<b>-80.0%</b>
Epidavros <sup>(1)</sup>	548,890	535,751	525,530	103,532	-80.3%
The Acropolis of Mycenae & Atreus' Treasure	495,993	502,619	491,780	78,839	-84.0%
The Acropolis of Athens	3,150,604	3,593,586	3,466,075	620,132	-82.1%
Sounio	306,665	337,544	326,907	100,319	-69.3%
The Acropolis of Lindos	489,431	525,757	523,531	156,462	-70.1%
Royal Tombs of Vergina	222,503	223,151	207,811	37,586	-81.9%
Ancient Olympia	484,238	457,710	451,044	64,759	-85.6%
Knossos (Crete)	855,663	949,192	930,813	175,927	-81.1%
Phaistos (Crete)	134,538	121,796	118,253	31,885	-73.0%
Ancient Korinthos <sup>(1)</sup>	196,944	214,023	209,397	31,981	-84.7%
Mystras <sup>(1)</sup>	145,939	147,713	144,983	36,352	-74.9%
Delphi	405,947	405,348	392,197	75,983	-80.6%
Other archaeological sites	5,464,010	5,649,161	5,548,677	1,158,167	-79.1%
<b>II. VISITORS WHO PAID TICKET</b>					
	2018	2019	JANUARY-NOVEMBER		change
			2019	2020	2020/2019
<b>Total number of visitors who paid ticket (C+D)</b>	<b>11,576,404</b>	<b>12,434,987</b>	<b>12,115,253</b>	<b>2,268,397</b>	<b>-81.3%</b>
C. Museums	3,155,269	3,345,997	3,225,970	605,426	-81.2%
D. Archaeological sites	8,421,135	9,088,990	8,889,283	1,662,971	-81.3%
<b>III. VISITORS WITH FREE ADMISSION TICKETS</b>					
	2018	2019	JANUARY-NOVEMBER		change
			2019	2020	2020/2019
<b>Total number of visitors with free admission ticket (E+F)</b>	<b>7,027,172</b>	<b>7,124,291</b>	<b>6,867,556</b>	<b>1,504,431</b>	<b>-78.1%</b>
E. Museums	2,546,942	2,549,930	2,419,841	495,478	-79.5%
F. Archaeological sites	4,480,230	4,574,361	4,447,715	1,008,953	-77.3%
<b>IV. RECEIPTS (euros)</b>					
	2018	2019	JANUARY-NOVEMBER		change
			2019	2020	2020/2019
<b>Total Receipts (G+H)</b>	<b>115,774,516</b>	<b>130,938,846</b>	<b>128,701,715</b>	<b>21,175,155</b>	<b>-83.5%</b>
G. Museums	18,251,493	23,343,026	22,786,856	4,046,520	-82.2%
H. Archaeological sites	97,523,023	107,595,820	105,914,859	17,128,635	-83.8%

<sup>(1)</sup> Flat rate ticket, valid both for the museum and the archaeological site.

<sup>(2)</sup> Museums remained closed from March 14<sup>th</sup> to June 15<sup>th</sup> 2020, Archaeological sites remained closed from March 14<sup>th</sup> to May 17<sup>th</sup> 2020, and both their operation was also suspended gradually from November 1<sup>st</sup> 2020 onwards, in the framework of the preventive measures for Covid-19 pandemic.

**TABLE 3: VISITORS OF MUSEUMS AND ARCHAEOLOGICAL SITES - TOTAL RECEIPTS  
(JANUARY - DECEMBER 2018, 2019, 2020)**

<b>I. VISITORS</b>				
Museums and Archaeological sites	2018	JANUARY-DECEMBER		
		2019	2020 <sup>(2)</sup>	change
<b>Total number of visitors (A+B)</b>	<b>18,603,576</b>	<b>19,559,278</b>	<b>3,772,828</b>	<b>-80.7%</b>
<b>A. Museums (C+E)</b>	<b>5,702,211</b>	<b>5,895,927</b>	<b>1,100,904</b>	<b>-81.3%</b>
Acropolis Museum	1,774,304	1,755,435	325,969	-81.4%
National Archaeological	594,219	608,876	98,175	-83.9%
Ancient Olympia	156,658	159,348	21,956	-86.2%
Palace of the Grand Master (Rhodes)	242,759	263,958	54,572	-79.3%
Herakleion Archaeological (Crete)	555,031	660,533	63,027	-90.5%
White Tower	225,944	251,760	62,007	-75.4%
Delphi	249,754	275,993	41,984	-84.8%
Other museums	1,903,542	1,920,024	433,214	-77.4%
<b>B. Archaeological Sites (D+F)</b>	<b>12,901,365</b>	<b>13,663,351</b>	<b>2,671,924</b>	<b>-80.4%</b>
Epidavros <sup>(1)</sup>	548,890	535,751	103,532	-80.7%
The Acropolis of Mycenae & Atreus' Treasure	495,993	502,619	78,839	-84.3%
The Acropolis of Athens	3,150,604	3,593,586	620,132	-82.7%
Sounio	306,665	337,544	100,319	-70.3%
The Acropolis of Lindos	489,431	525,757	156,462	-70.2%
Royal Tombs of Vergina	222,503	223,151	37,586	-83.2%
Ancient Olympia	484,238	457,710	64,759	-85.9%
Knossos (Crete)	855,663	949,192	175,927	-81.5%
Phaistos (Crete)	134,538	121,796	31,885	-73.8%
Ancient Korinthos <sup>(1)</sup>	196,944	214,023	31,981	-85.1%
Mystras <sup>(1)</sup>	145,939	147,713	36,352	-75.4%
Delphi	405,947	405,348	75,983	-81.3%
Other archaeological sites	5,464,010	5,649,161	1,158,167	-79.5%
<b>II. VISITORS WHO PAID TICKET</b>				
	2018	JANUARY-DECEMBER		
		2019	2020	change
<b>Total number of visitors who paid ticket (C+D)</b>	<b>11,576,404</b>	<b>12,434,987</b>	<b>2,268,397</b>	<b>-81.8%</b>
C. Museums	3,155,269	3,345,997	605,426	-81.9%
D. Archaeological sites	8,421,135	9,088,990	1,662,971	-81.7%
<b>III. VISITORS WITH FREE ADMISSION TICKETS</b>				
	2018	JANUARY-DECEMBER		
		2019	2020	change
<b>Total number of visitors with free admission ticket (E+F)</b>	<b>7,027,172</b>	<b>7,124,291</b>	<b>1,504,431</b>	<b>-78.9%</b>
E. Museums	2,546,942	2,549,930	495,478	-80.6%
F. Archaeological sites	4,480,230	4,574,361	1,008,953	-77.9%
<b>IV. RECEIPTS (euros)</b>				
	2018	JANUARY-DECEMBER		
		2019	2020	change
<b>Total Receipts (G+H)</b>	<b>115,774,516</b>	<b>130,938,846</b>	<b>21,175,155</b>	<b>-83.8%</b>
G. Museums	18,251,493	23,343,026	4,046,520	-82.7%
H. Archaeological sites	97,523,023	107,595,820	17,128,635	-84.1%

<sup>(1)</sup> Flat rate ticket, valid both for the museum and the archaeological site.

<sup>(2)</sup> Museums remained closed from March 14<sup>th</sup> to June 15<sup>th</sup> 2020, Archaeological sites remained closed from March 14<sup>th</sup> to May 17<sup>th</sup> 2020, and both their operation was also suspended gradually from November 1<sup>st</sup> 2020 onwards, in the framework of the preventive measures for Covid-19 pandemic.

## EXPLANATORY NOTES

<b>Survey on Museums and Archaeological Sites Attendance</b>	<p>The Survey on Museums and Archaeological Sites Attendance has been producing results since 1970. The survey collects data from the Archaeological Receipts Fund (ARF) of the Ministry of Culture and Sports concerning the number of visitors and the receipts from the tickets sold in the Museums and Archaeological sites of the country.</p> <p>The corresponding data for the Acropolis Museum is available from December 2009 onwards.</p>
<b>Legal Framework</b>	<p>The survey is conducted since 1970 on a regular basis and it produces results on a monthly and yearly basis, in compliance with the Joint Ministerial Decision 15189/B379/73.</p>
<b>Reference Period</b>	<p>01/11/2020 to 31/11/2020 and total of year 2020</p>
<b>Methodology and Definitions</b>	<p>The Survey is conducted on a monthly basis from data mainly collected from the Archaeological Receipts Fund (ARF) of the Ministry of Culture and Sports concerning the number of visitors and the receipts from the tickets sold in the Museums and Archaeological sites of the Country. ELSTAT tabulates and presents the data for the whole of the Country, by month and by year.</p> <p><b>Number of flat rate tickets</b></p> <p>From April 1999 onwards, in some museums and the nearby archaeological sites, in addition to the ordinary ticket, a new “flat rate ticket” was established, which is valid for both the museum and the nearby archaeological site. The total number of these flat rate tickets for <b>November 2020</b> was <b>228</b>.</p>
<b>References</b>	<p>More information on the Survey on Museums and Archaeological Sites Attendance and detailed time series are available on: <a href="http://www.statistics.gr/en/statistics/-/publication/SCI21/">http://www.statistics.gr/en/statistics/-/publication/SCI21/</a></p>