



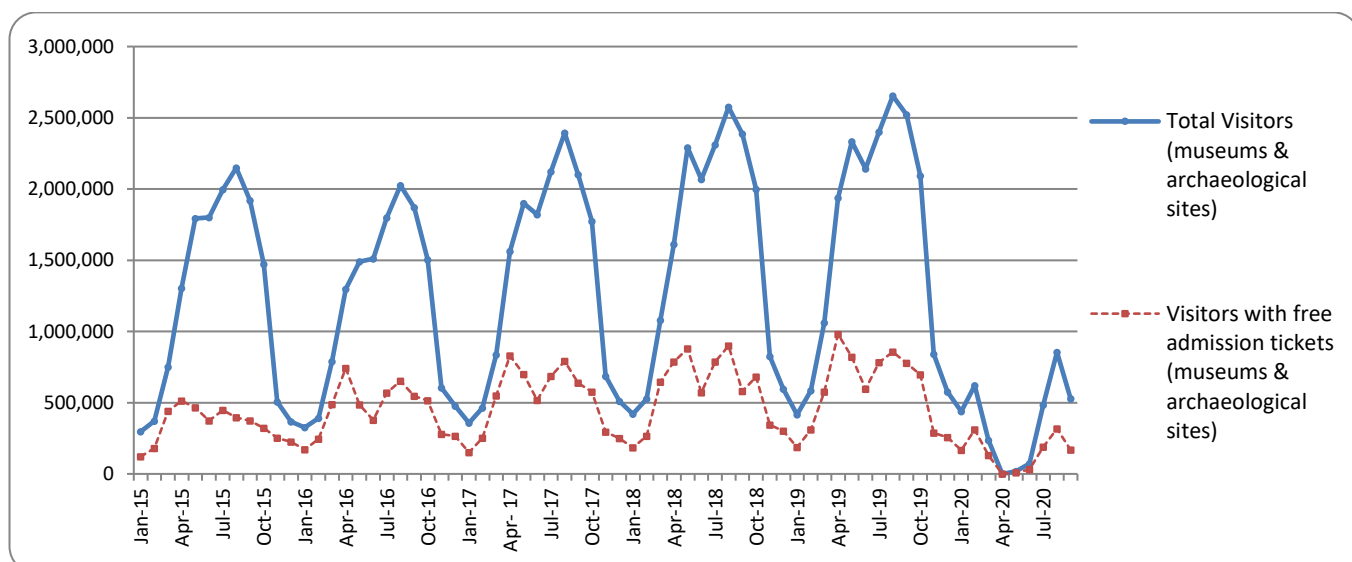
## PRESS RELEASE

### SURVEY ON MUSEUMS AND ARCHAEOLOGICAL SITES ATTENDANCE SEPTEMBER 2020

The Hellenic Statistical Authority (ELSTAT) announces the results of the *Survey on Museums and Archaeological Sites Attendance* for September 2020. More specifically:

- In September 2020, compared with September 2019, the number of visitors at Museums recorded a decrease of 81.3%, while a decrease of 82.8% was observed in the number of free admission visitors and a decrease of 79.7% in the corresponding receipts (Table 1).
- In September 2020 compared with the corresponding month of 2019, the number of visitors at Archaeological sites recorded a decrease of 78.2%, while a decrease of 76.3% was observed in the number of free admission visitors and an 80.6% decrease in the corresponding receipts (Table 1).
- During the nine-month period from January to September 2020 compared to the corresponding period of 2019, a decrease of 79.5% was observed in the number of visitors of Museums, while a decrease of 78.3% was recorded in the number of free admission visitors and an 82.0% decrease in the relevant receipts, taking into consideration that the operation of Museums had been suspended from March 14<sup>th</sup> until June 15<sup>th</sup> 2020 (Table 2).
- As regards Archaeological sites, during the nine-month period from January to September 2020 compared to the corresponding period of 2019, a decrease of 79.8% was recorded in the number of visitors, while a 77.1% decrease was observed in the number of free admission visitors and an 84.2% decrease in the relevant receipts, taking into consideration that the operation of Archaeological sites had been suspended from March 14<sup>th</sup> to May 17<sup>th</sup> 2020 (Table 2).

**Graph 1: Visitors of Museums and Archaeological sites (January 2015 – September 2020)**



**Information on methodological issues:**

Sectoral Statistics Division  
Tourism and Cultural Statistics Section  
Head of the Section: Asimina Katri  
Tel: +30 213 135 2168  
Fax: +30 210 482 2669  
e-mail: [a.katri@statistics.gr](mailto:a.katri@statistics.gr)

**Information for data provision:**

Tel. +30 213 135 2022, 2308, 2310  
e-mail: [data.dissem@statistics.gr](mailto:data.dissem@statistics.gr)

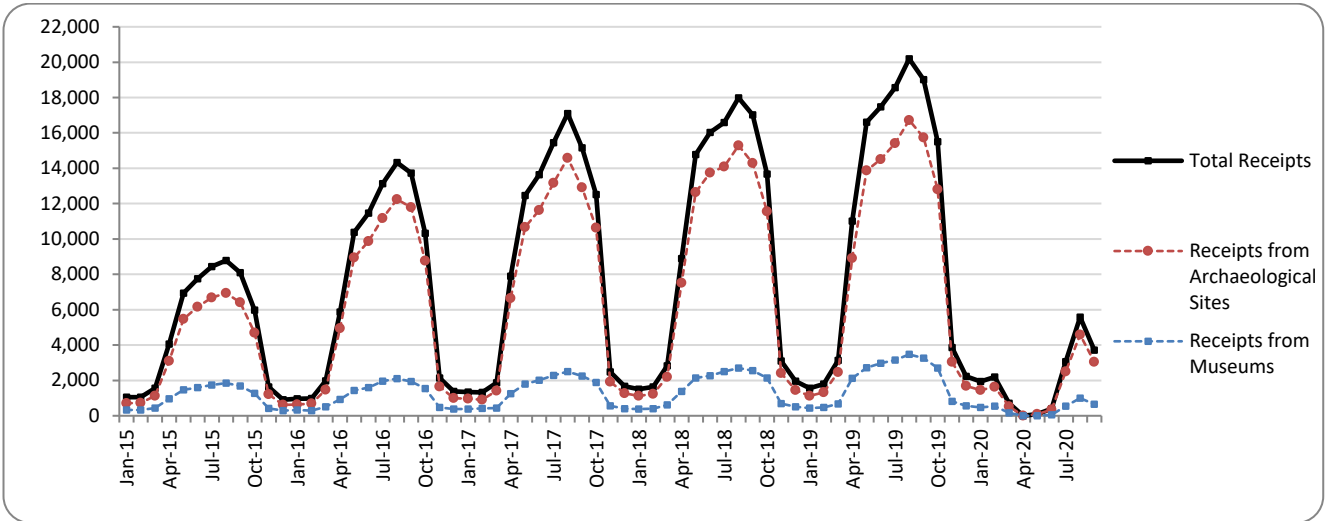
**TABLE 1: VISITORS OF MUSEUMS AND ARCHAEOLOGICAL SITES - TOTAL RECEIPTS  
(SEPTEMBER 2019 & SEPTEMBER 2020)**

<b>I. NUMBER OF VISITORS</b>			
Museums and Archaeological sites	2019	2020	Change 2020/2019
<b>Total number of visitors (A+B)</b>	<b>2,522,433</b>	<b>528,241</b>	<b>-79.1%</b>
<b>A. Museums (C+E)</b>	<b>679,334</b>	<b>126,832</b>	<b>-81.3%</b>
Acropolis Museum	173,232	29,129	-83.2%
National Archaeological	65,022	9,916	-84.7%
Ancient Olympia	16,906	2,933	-82.7%
Palace of the Grand Master (Rhodes)	42,914	12,075	-71.9%
Herakleion Archaeological (Crete)	112,640	9,918	-91.2%
White Tower	21,874	5,414	-75.2%
Delphi	30,456	3,711	-87.8%
Other museums	216,290	53,736	-75.2%
<b>B. Archaeological Sites (D+F)</b>	<b>1,843,099</b>	<b>401,409</b>	<b>-78.2%</b>
Epidavros <sup>(1)</sup>	65,550	12,738	-80.6%
The Acropolis of Mycenae & Atreus' Treasure	57,796	8,379	-85.5%
The Acropolis of Athens	436,786	68,547	-84.3%
Sounio	40,179	11,378	-71.7%
The Acropolis of Lindos	94,432	33,729	-64.3%
Royal Tombs of Vergina	21,527	3,351	-84.4%
Ancient Olympia	57,446	7,737	-86.5%
Knossos (Crete)	133,015	32,582	-75.5%
Phaistos (Crete)	14,303	4,734	-66.9%
Ancient Korinthos <sup>(1)</sup>	27,028	4,223	-84.4%
Mystras <sup>(1)</sup>	19,176	5,317	-72.3%
Delphi	49,116	7,754	-84.2%
Other archaeological sites	826,745	200,940	-75.7%
<b>II. VISITORS WHO PAID TICKET</b>			
	2019	2020	Change 2020/2019
<b>Total number of visitors who paid ticket (C+D)</b>	<b>1,745,562</b>	<b>360,551</b>	<b>-79.3%</b>
C. Museums	425,490	83,099	-80.5%
D. Archaeological sites	1,320,072	277,452	-79.0%
<b>III. VISITORS WITH FREE ADMISSION TICKETS</b>			
	2019	2020	Change 2020/2019
<b>Total number of visitors with free admission ticket (E+F)</b>	<b>776,871</b>	<b>167,690</b>	<b>-78.4%</b>
E. Museums	253,844	43,733	-82.8%
F. Archaeological sites	523,027	123,957	-76.3%
<b>IV. RECEIPTS (euros)</b>			
	2019	2020	Change 2020/2019
<b>Total Receipts (G+H)</b>	<b>19,012,406</b>	<b>3,713,900</b>	<b>-80.5%</b>
G. Museums	3,267,155	661,853	-79.7%
H. Archaeological sites	15,745,251	3,052,047	-80.6%

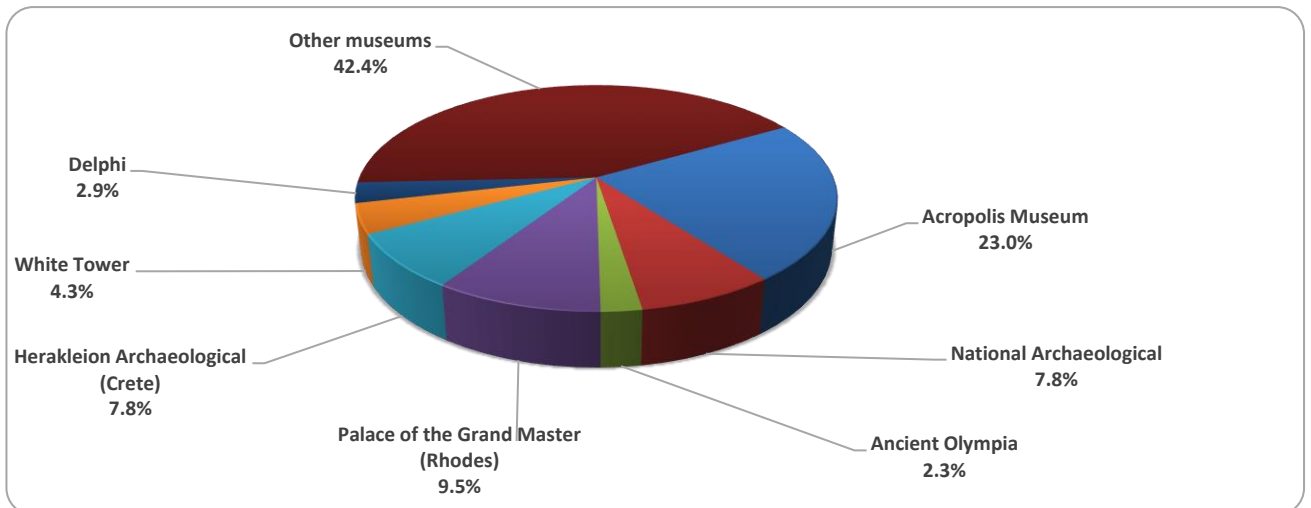
<sup>(1)</sup> Flat rate ticket, valid both for the museum and the archaeological site.

The following graphs depict the evolution of the receipts (Graph 2), as well as the number of visitors by Museum and Archaeological Site (Graphs 3 and 4).

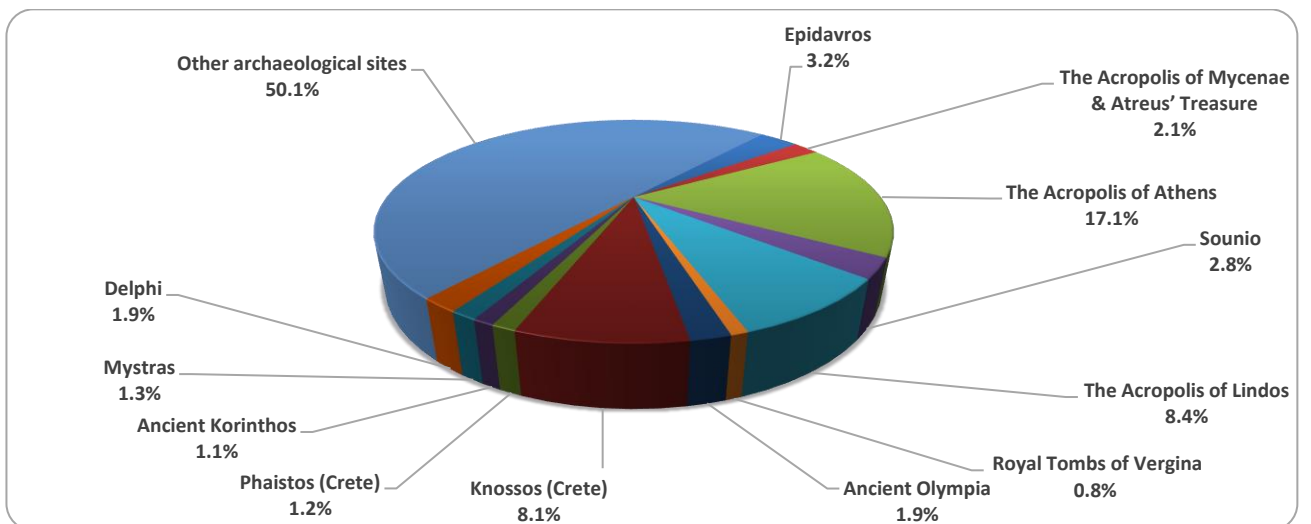
**Graph 2: Receipts from Museums and Archaeological Sites (January 2015 – September 2020)**  
(in thousand euro)



**Graph 3: Percentage distribution of visitors by Museum, September 2020**



**Graph 4: Percentage distribution of visitors by Archaeological site, September 2020**



**TABLE 2: VISITORS OF MUSEUMS AND ARCHAEOLOGICAL SITES - TOTAL RECEIPTS  
(2018, 2019, JANUARY-SEPTEMBER 2019, 2020)**

<b>I. VISITORS</b>					
Museums and Archaeological sites	2018	2019	JANUARY-SEPTEMBER		change 2020/2019
			2019	2020 <sup>(2)</sup>	
<b>Total number of visitors (A+B)</b>	<b>18,603,576</b>	<b>19,559,278</b>	<b>16,048,898</b>	<b>3,253,618</b>	<b>-79.7%</b>
<b>A. Museums (C+E)</b>	<b>5,702,211</b>	<b>5,895,927</b>	<b>4,754,250</b>	<b>976,805</b>	<b>-79.5%</b>
Acropolis Museum	1,774,304	1,755,435	1,412,098	294,016	-79.2%
National Archaeological	594,219	608,876	482,577	86,996	-82.0%
Ancient Olympia	156,658	159,348	133,019	19,394	-85.4%
Palace of the Grand Master (Rhodes)	242,759	263,958	219,316	41,929	-80.9%
Herakleion Archaeological (Crete)	555,031	660,533	557,338	55,012	-90.1%
White Tower	225,944	251,760	189,958	56,187	-70.4%
Delphi	249,754	275,993	223,072	37,364	-83.3%
Other museums	1,903,542	1,920,024	1,536,872	385,907	-74.9%
<b>B. Archaeological Sites (D+F)</b>	<b>12,901,365</b>	<b>13,663,351</b>	<b>11,294,648</b>	<b>2,276,813</b>	<b>-79.8%</b>
Epidavros <sup>(1)</sup>	548,890	535,751	448,185	84,159	-81.2%
The Acropolis of Mycenae & Atreus' Treasure	495,993	502,619	416,519	68,463	-83.6%
The Acropolis of Athens	3,150,604	3,593,586	2,907,691	541,167	-81.4%
Sounio	306,665	337,544	273,770	85,032	-68.9%
The Acropolis of Lindos	489,431	525,757	454,978	128,842	-71.7%
Royal Tombs of Vergina	222,503	223,151	178,085	33,463	-81.2%
Ancient Olympia	484,238	457,710	379,470	56,436	-85.1%
Knossos (Crete)	855,663	949,192	784,309	146,105	-81.4%
Phaistos (Crete)	134,538	121,796	91,925	26,894	-70.7%
Ancient Korinthos <sup>(1)</sup>	196,944	214,023	167,119	27,230	-83.7%
Mystras <sup>(1)</sup>	145,939	147,713	124,883	29,369	-76.5%
Delphi	405,947	405,348	331,285	64,670	-80.5%
Other archaeological sites	5,464,010	5,649,161	4,736,429	984,983	-79.2%
<b>II. VISITORS WHO PAID TICKET</b>					
	2018	2019	JANUARY-SEPTEMBER		change
			2019	2020	2020/2019
<b>Total number of visitors who paid ticket (C+D)</b>	<b>11,576,404</b>	<b>12,434,987</b>	<b>10,164,720</b>	<b>1,931,526</b>	<b>-81.0%</b>
C. Museums	3,155,269	3,345,997	2,694,366	530,572	-80.3%
D. Archaeological sites	8,421,135	9,088,990	7,470,354	1,400,954	-81.2%
<b>III. VISITORS WITH FREE ADMISSION TICKETS</b>					
	2018	2019	JANUARY-SEPTEMBER		change
			2019	2020	2020/2019
<b>Total number of visitors with free admission ticket (E+F)</b>	<b>7,027,172</b>	<b>7,124,291</b>	<b>5,884,178</b>	<b>1,322,092</b>	<b>-77.5%</b>
E. Museums	2,546,942	2,549,930	2,059,884	446,233	-78.3%
F. Archaeological sites	4,480,230	4,574,361	3,824,294	875,859	-77.1%
<b>IV. RECEIPTS (euros)</b>					
	2018	2019	JANUARY-SEPTEMBER		change
			2019	2020	2020/2019
<b>Total Receipts (G+H)</b>	<b>115,774,516</b>	<b>130,938,846</b>	<b>109,346,835</b>	<b>17,680,271</b>	<b>-83.8%</b>
G. Museums	18,251,493	23,343,026	19,270,293	3,459,143	-82.0%
H. Archaeological sites	97,523,023	107,595,820	90,076,542	14,221,128	-84.2%

<sup>(1)</sup> Flat rate ticket, valid both for the museum and the archaeological site.

<sup>(2)</sup> Museums remained closed from March 14<sup>th</sup> to June 15<sup>th</sup>, 2020, while Archaeological sites remained closed from March 14<sup>th</sup> to May 17<sup>th</sup>, 2020, in the framework of the preventive measures for Covid-19 pandemic.

## EXPLANATORY NOTES

<b>Survey on Museums and Archaeological Sites Attendance</b>	<p>The Survey on Museums and Archaeological Sites Attendance has been producing results since 1970. The survey collects data from the Archaeological Receipts Fund (ARF) of the Ministry of Culture and Sports concerning the number of visitors and the receipts from the tickets sold in the Museums and Archaeological sites of the country.</p> <p>The corresponding data for the Acropolis Museum is available from December 2009 onwards.</p>
<b>Legal Framework</b>	<p>The survey is conducted since 1970 on a regular basis and it produces results on a monthly and yearly basis, in compliance with the Joint Ministerial Decision 15189/B379/73.</p>
<b>Reference Period</b>	<p>01/09/2020 to 31/09/2020</p>
<b>Methodology and Definitions</b>	<p>The Survey is conducted on a monthly basis from data mainly collected from the Archaeological Receipts Fund (ARF) of the Ministry of Culture and Sports concerning the number of visitors and the receipts from the tickets sold in the Museums and Archaeological sites of the Country. ELSTAT tabulates and presents the data for the whole of the Country, by month and by year.</p> <p><b>Number of flat rate tickets</b></p> <p>From April 1999 onwards, in some museums and the nearby archaeological sites, in addition to the ordinary ticket, a new “flat rate ticket” was established, which is valid for both the museum and the nearby archaeological site. The total number of these flat rate tickets for <b>September 2020</b> was <b>27,141</b>.</p>
<b>References</b>	<p>More information on the Survey on Museums and Archaeological Sites Attendance and detailed time series are available on: <a href="http://www.statistics.gr/en/statistics/-/publication/SCI21/">http://www.statistics.gr/en/statistics/-/publication/SCI21/</a></p>