



## PRESS RELEASE

### LABOUR FORCE SURVEY: April 2021

The Hellenic Statistical Authority (ELSTAT) announces the seasonally adjusted estimates of employment and unemployment for April 2021. It should be noted that in April, the labour market was affected by specific regulatory measures concerning the operation of businesses, as well as by measures taken to protect public health and tackle the COVID-19 pandemic throughout the whole Country. These measures affected, to a large extent, not only the normal functioning of the market, but also the data collection method of the survey.

It should be noted that due to the exceptional circumstances under which the collection of a part of the primary data used for the compilation of the present survey took place and the resulting impact on the response rate, as well as the extent to which the latter can be attributed to the above mentioned exceptional circumstances, ELSTAT is currently conducting methodological checks of compatibility of alternative data collection practices the results of which may be published as long as this is deemed necessary.

- The **seasonally adjusted unemployment rate** in April 2021 amounted to **17.0%** compared to the downwards revised 15.9% in April 2020 and to the upwards adjusted rate of 16.8% in March 2021.
- The **number of employed persons** amounted to 3,714,575 persons decreasing by 154,202 persons as compared with April 2020 (-4.0%) and increasing by 38,683 persons compared with March 2021 (+1.1%).
- The **number of unemployed persons** amounted to 762,553 increasing by 31,202 persons as compared with April 2020 (+4.3%) and by 21,990 persons compared with March 2021 (+3.0%).
- The **number of persons outside the labour force**, i.e., persons that neither work nor look for a job, amounted to 3,391,650, increasing by 92,205 persons as compared with April 2020 (+2.8%) and decreasing by 63,733 persons compared with March 2021 (-1.8%).

Graph 1 shows the evolution of the above figures since January 2009.

The monthly estimates are subject to revisions due to the updates of the seasonally adjusted series whenever new monthly data are added, as well as to the update of seasonal adjustment model with complete annual data. Users should also take into account that **the first estimates of the most recent monthly unemployment rates are likely to be revised as they are produced on the basis of the survey data collected and processed at the time of the press release publication, which do not coincide with the finally collected and processed data**. For this reason, the monthly estimates are revised when the final quarterly estimates are made available.

It should be noted that the data collection and estimates production methods of the Labour Force Survey have changed since 2021 due to the implementation of the new European Regulation 2019/1700 on social statistics, which entered into force on 1.1.2021. In this Press Release, estimates up to and including the year 2020 were produced in accordance with the provisions of the previous Regulation (EC) No 577/98 governing the survey. The changes introduced by the new Regulation and the changes in the calculation of the employment status are described in the Explanatory Notes.

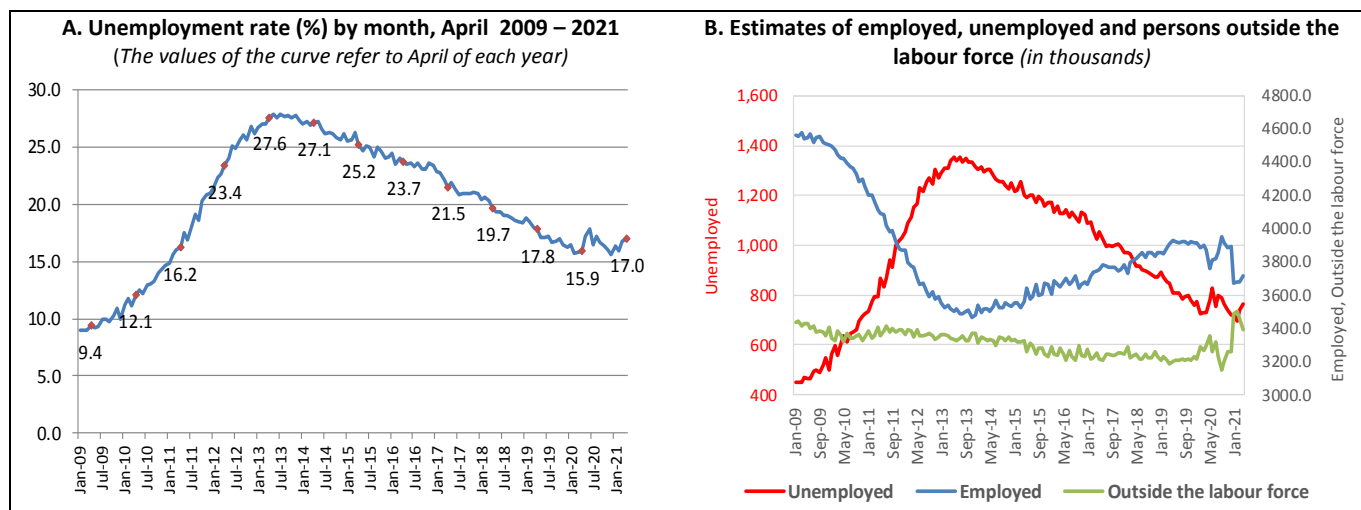
#### **Information on methodological issues**

Population, Employment and Cost of Living Statistics Division  
Section of Labour Statistics  
Dimitris Vatikiotis  
Tel: +30 213 135 2173  
E-mail : [d.vatikiotis@statistics.gr](mailto:d.vatikiotis@statistics.gr)

#### **Information for data provision:**

Tel. 0030 213 135 2022  
e-mail: [data.dissem@statistics.gr](mailto:data.dissem@statistics.gr)

**Graph 1: Evolution of employment and unemployment**

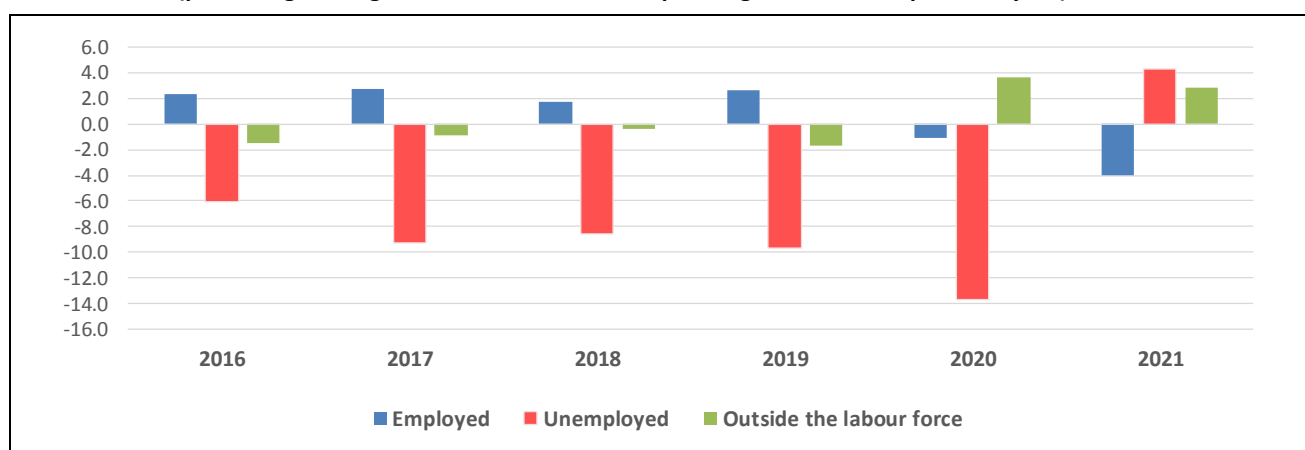


The figures and the changes of the estimates as regards the persons employed, the unemployed and the persons outside the labour force, as well as the unemployment rate for April of the years 2016-2021 are presented in Table 1. The complete data series for employed, unemployed and persons outside the labour force as well as the unemployment rate are published on ELSTAT’s webpage. Graph 2 depicts the percentage changes in relation to the corresponding month of the previous year.

**Table 1: Employed, unemployed, persons outside the labour force and unemployment rate, April 2016 – 2021**

	April					
	2016	2017	2018	2019	2020	2021
Employed	3,646,134	3,745,079	3,809,729	3,910,988	3,868,777	3,714,575
Unemployed	1,130,138	1,025,031	937,440	847,071	731,351	762,553
Persons outside the labour force	3,278,348	3,248,950	3,236,191	3,183,202	3,299,445	3,391,650
<b>Unemployment Rate</b>	<b>23.7</b>	<b>21.5</b>	<b>19.7</b>	<b>17.8</b>	<b>15.9</b>	<b>17.0</b>

**Graph 2: Annual changes of persons employed, unemployed and persons outside the labour force (percentage change in relation to the corresponding month of the previous year)**



Tables 2 and 3 illustrate the unemployment rate by gender and age group from April 2016 to 2021.

**Table 2: Unemployment rate (%) by gender, April 2016-2021**

Gender	April					
	2016	2017	2018	2019	2020	2021
Males	19.5	17.4	16.0	14.9	13.7	13.6
Females	28.9	26.5	24.5	21.5	18.7	21.4
<b>Total</b>	<b>23.7</b>	<b>21.5</b>	<b>19.7</b>	<b>17.8</b>	<b>15.9</b>	<b>17.0</b>

**Table 3: Unemployment rate (%) by aggregated age group, April 2016-2021**

Age Group	April					
	2016	2017	2018	2019	2020	2021
15-24	51.9	45.4	39.0	31.7	33.6	46.8
25-74	22.0	20.1	18.7	17.1	14.9	15.6
<b>Total</b>	<b>23.7</b>	<b>21.5</b>	<b>19.7</b>	<b>17.8</b>	<b>15.9</b>	<b>17.0</b>

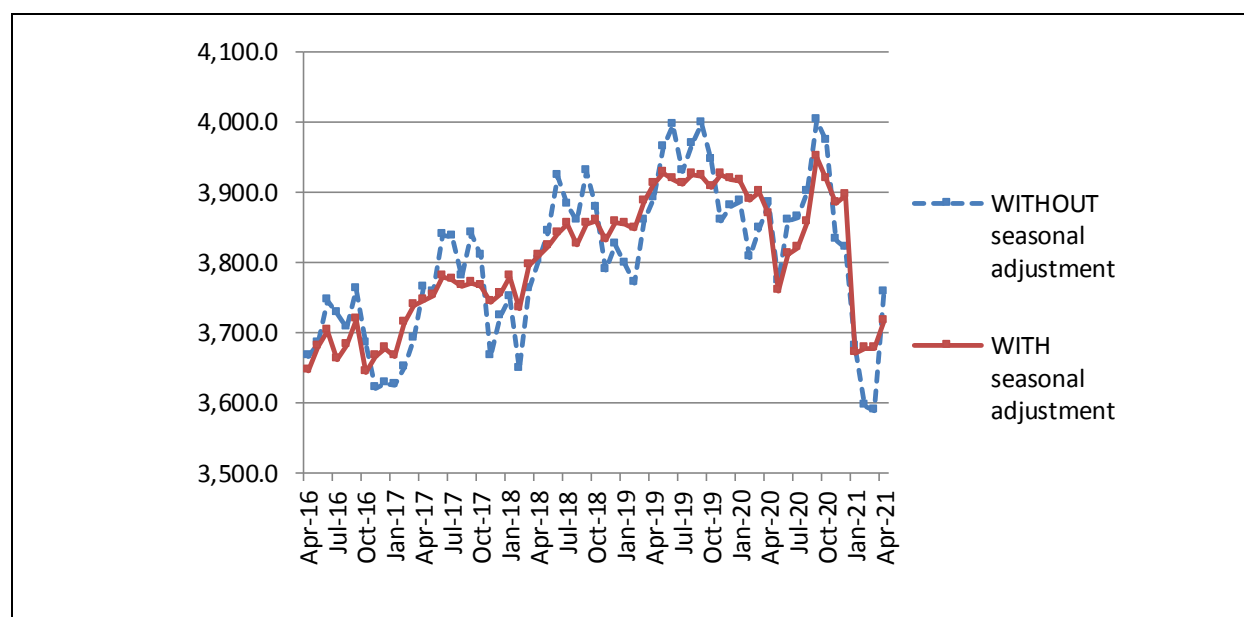
### The effect of seasonal adjustment on the estimates of Labour Force Survey

The characteristics surveyed by the Labour Force Survey (number of employed, unemployed, etc.) have large seasonal variation. For example, in Greece, employment normally increases during the summer months because of tourism (if there are no other countervailing factors).

Seasonal adjustment is a statistical technique that removes the seasonal component of a time series, making more visible the underlying trend in the change of a characteristic. Whenever new data are added, the monthly estimates are subject to revisions due to the update of the seasonally adjusted time series.

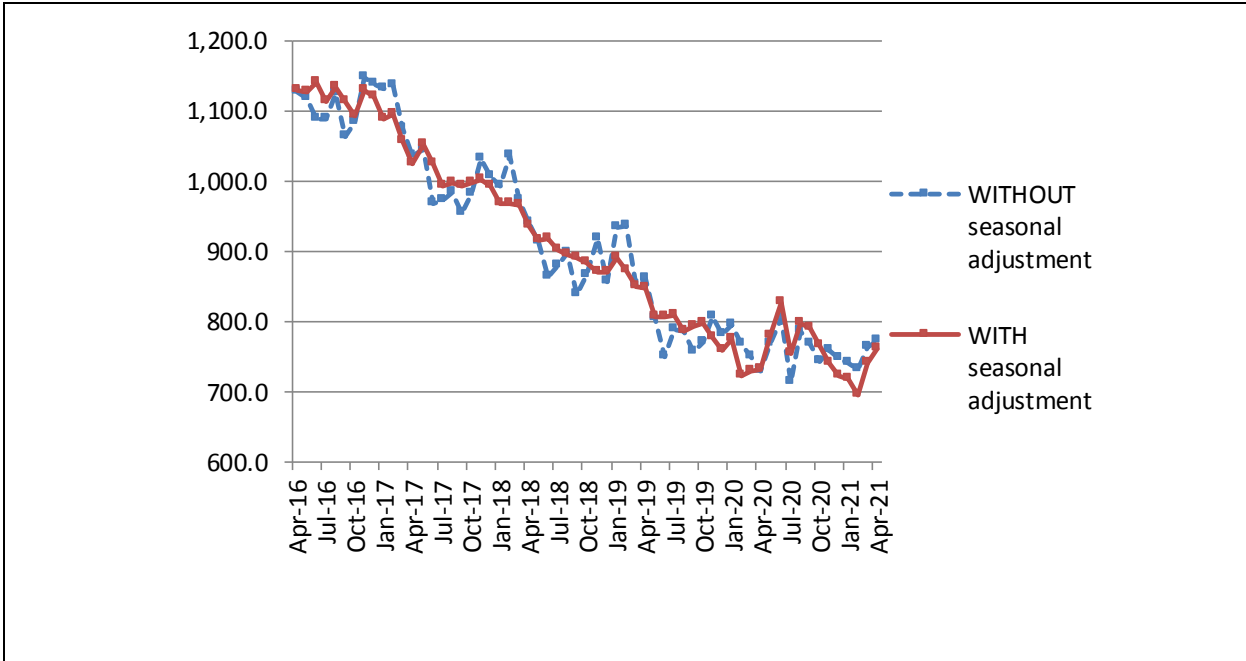
Graphs 3, 4 and 5 present the adjusted and unadjusted time series for employed and unemployed persons, and the unemployment rate as of 2016.

**Graph 3: Number of Employed Persons - Adjusted and Non-adjusted Estimates**



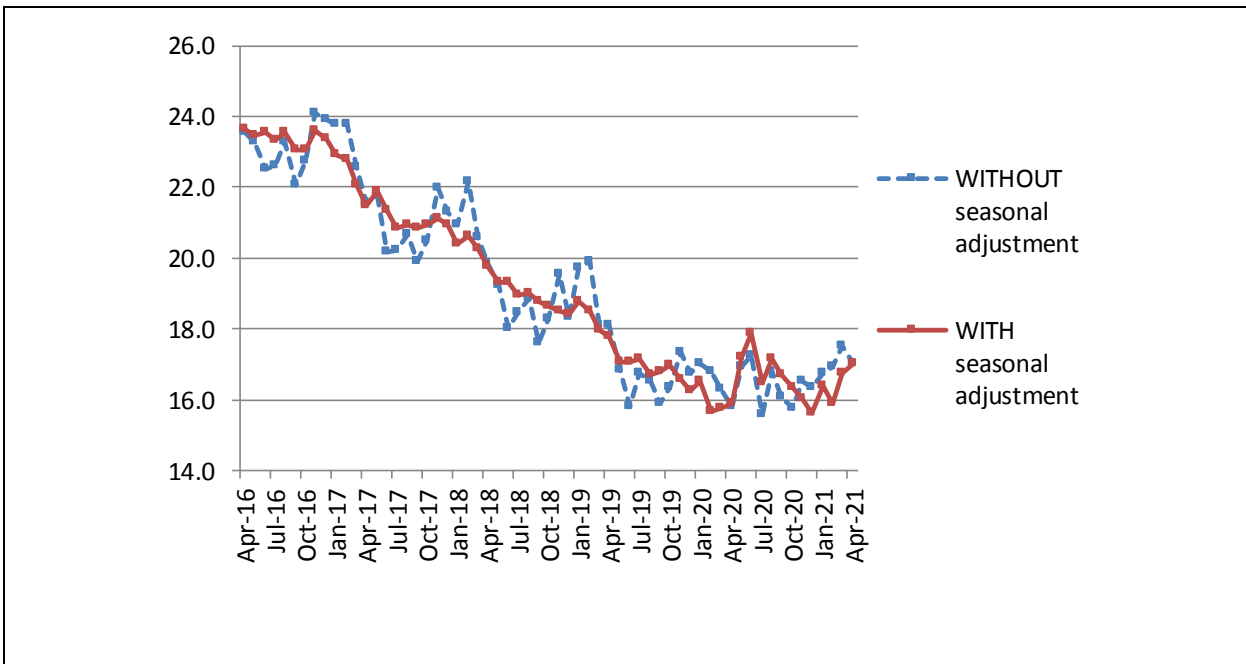
(in thousands)

**Graph 4: Number of Unemployed Persons - Adjusted and Non-adjusted Estimates**



(in thousands)

**Graph 5: Unemployment Rate (%) - Adjusted and Non-adjusted Estimates**



### Revisions of monthly estimates

The monthly estimates for the number of employed and unemployed persons and the unemployment rate can be subject to revisions in the following months due to the updates to the seasonally adjusted series whenever new monthly data are added, to the inclusion of the most recent quarterly Labour Force Survey data, and the update of the seasonal adjustment model with complete annual data. In this press release the estimation of unemployment rate for the period February 2020 – March 2021 has been revised (compared to the estimation published in the previous press-release) as follows:

**Table 6: Comparison of seasonally adjusted estimates**

	Estimations published on June 11 2021	Estimations published in the current press release
February 2020	15.9	15.7
March 2020	16.1	15.8
April 2020	16.4	15.9
May 2020	16.8	17.2
June 2020	17.6	17.9
July 2020	16.6	16.5
August 2020	16.8	17.2
September 2020	16.2	16.7
October 2020	16.3	16.4
November 2020	16.1	16.0
December 2020	15.6	15.6
January 2021	16.5	16.4
February 2021	16.6	15.9
March 2021	16.3	16.8
April 2021	-	17.0

## EXPLANATORY NOTES

**Labour Force Survey** The Labour Force Survey has been conducted since 1981. Until 1997 the results were produced on an annual basis with reference to the second quarter of each year. From 1998 onwards it is a continuous quarterly survey. The main statistical objective of the Labour Force Survey is to divide the population of working age (15 years and over) into three mutually exclusive and exhaustive groups - persons in employment, unemployed persons and persons outside the labour force. In addition, the Labour Force Survey collects information on demographic characteristics, on main job characteristics, on the existence and characteristics of a second job, on educational attainment, on participation in education, on previous working experience and on search of job.

The data presented in this Press release are revised compared to those published by Eurostat on 1st July.

**Legislation** The current survey is fully harmonized with European legislation. The basic act is Regulation (EC) No 2019/1700 of the European Parliament and of the Council establishing a common framework for European statistics relating to persons and households, which is in force since 1/1/2021 and replaced Regulation (EC) 577/98. Implementing Regulation (EU) 2019/2240 sets out the design and characteristics of the survey and Implementing Regulation (EU) 2019/2241 lays down the technical elements of the monthly unemployment data.

**Reference Period** The sample of Labour Force Survey is equally allocated to the 4 (or 5) weeks of the month. Every selected household is assigned to a specific week, the reference week, running from Monday to Sunday.

**Coverage** For the monthly estimates, a sub-sample of the quarterly Labour Force survey's sample is used.

**Definitions** **Employed:** comprise persons aged 15 to 89 (in completed years at the end of the reference week) who, during the reference week, were in one of the following categories:

a) persons who during the reference week worked for at least 1 hour for pay or profit, including contributing family workers

b) persons with a job or business who were temporarily not at work during the reference week but had an attachment to their job, where the following groups have a job attachment:

- persons not at work due to holidays, working time arrangements, sick leave, maternity or paternity leave;
- persons in job-related training;
- persons on parental leave, either receiving and/or being entitled to job-related income or benefits, or whose parental leave is expected to be 3 months or less;
- seasonal workers during the off-season, where they continue to regularly perform tasks and duties for the job or business, excluding fulfilment of legal or administrative obligations;
- persons temporarily not at work for other reasons where the expected duration of the absence is 3 months or less.

*Note: contributing family workers, persons in own-use production work, voluntary workers, unpaid trainees and individuals involved in other forms of work are defined in the 19th International Conference of Labour Statisticians (ICLS) Resolution concerning statistics of work, employment and labour underutilisation, adopted on 11 October 2013.*

**Unemployed persons** comprise persons aged 15 to 74 who were, during the reference week, (a) not employed, (b) currently available for work, and (c) actively seeking work, or found a job to start within a period of at most 3 months from the end of the reference week.

**Persons outside the labour force** comprise persons who were in one of the following categories: (a) aged below 15, (b) aged above 89, or (c) aged 15 to 89 and neither employed nor unemployed during the reference week, according to the definitions of employment and unemployment described above.

**Economically active population (labour force)** are persons either employed or unemployed.

**Unemployment Rate** is the ratio of unemployed divided by total labour force.

**Changes in  
Labor Force  
Survey as of  
2021**

	<b>Up to 2020</b>	<b>From 2021 onwards</b>
<b>Data collection</b>	Paper questionnaires	By electronic means (CAPI)
<b>Questionnaire</b>	The number of the surveyed characteristics and the relevant questions remained the same for every quarter of the year.	The number of the surveyed characteristics and the relevant questions changes every quarter. For specific characteristics, only annual estimates are produced.
<b>Definition of employed</b>	<p>Population: Persons aged 15 years and over.</p> <p>Persons who reported that they did not work in the reference week but had a job from which they were temporarily absent are classified as employed, except in the following cases:</p> <ul style="list-style-type: none"> <li>• Employees who are non-active, are absent for more than 3 months and receive less than 50 % of their salary.</li> <li>• Employees who are absent from work due to seasonality.</li> </ul> <p>Self-employed persons are employed in all cases (including family workers).</p>	<p>Population: Persons aged 15-89 years.</p> <p>Persons who reported that they did not work in the reference week but had a job from which they were temporarily absent are considered to be employed only if the duration of their absence is less than 3 months or if they continue to receive income from their work.</p> <ul style="list-style-type: none"> <li>• Sick leave, maternity/paternity leave, and educational leave are excluded, and in these cases, persons are classified as employed.</li> </ul> <p>Seasonal workers, regardless of professional status, who reported that they did not work in the reference week but had a job from which they were temporarily absent due to seasonality are considered to be employed only if they perform tasks related to their work (e.g. renovation, business trip) excluding legal or administrative obligations.</p>

**Seasonal adjustment** Seasonal adjustment is a statistical technique that removes the seasonal component of a time series, making more visible the underlying trend in the change of a characteristic. Hellenic Statistical Authority is using JDemetra+ for seasonal adjustment. Seasonally adjusted series are produced by TRAMO&SEATS algorithm. It should be noted that due to seasonal adjustment the whole series with monthly estimates is recalculated every time a new month is added in time series. As a result, estimations for the previous months are often revised.

**Sampling errors** The monthly results of Labour Force Survey are estimations that are based in a relatively small sample size and have large sampling errors. An indication of the magnitude of survey's sampling errors is that estimations of characteristics that refer to 10,000 persons at the total country are accompanied by a coefficient of variation of at least 15%. More accurate estimates and detailed analysis of the changes in employment can be based on the quarterly results of the survey.

**Methodology** Labour Force Survey's estimates are produced by a suitable unbiased estimator which takes in to account a) the probability of selection of every sampled household, b) the response rate in every primary sampling unit, c) the estimated population, for the corresponding month, allocated by NUTS II areas, gender and age group.

**Data collection during the pandemic period of coronavirus disease (COVID-19)** In April, the labour market was affected by specific regulatory measures regarding the operation of businesses as well as by measures taken to protect public health and tackle the COVID-19 pandemic in the whole Country. These measures affected, to a large extent, not only the normal functioning of the market, but also the data collection method of the survey.

Since November 2020, for reasons of public health protection, personal interviews are suspended, and data are collected exclusively by way of telephone interviews and electronic questionnaire.

**References** Analytical description of the Labour Force Survey's methodology and definitions can be found at <https://www.statistics.gr/el/statistics/-/publication/SJO01/>