



PRESS RELEASE

LABOUR FORCE SURVEY: December 2020

The Hellenic Statistical Authority (ELSTAT) announces the seasonally adjusted unemployment rate for December 2020. It should be noted that in December, the labour market was affected by specific regulatory measures regarding the operation of businesses as well as by measures taken to protect public health and tackle the COVID-19 pandemic in the whole Country. These measures affected, to a large extent, not only the normal functioning of the market, but also the data collection method of the survey.

It should be noted that due to the exceptional circumstances under which the collection of a part of the sample used for the compilation of the present survey took place and the resulting impact on the response rate as well as the extent to which the latter can be attributed to the above mentioned exceptional circumstances, ELSTAT is currently conducting methodological checks of compatibility of alternative data collection practices the results of which may be published as long as this is deemed necessary.

- The **seasonally adjusted unemployment rate** in December 2020 was **15.8%** compared to 16.4% in December 2019 and to 16.2% in November 2020. The number of employed in December 2020 amounted to 3,880,364 persons. The number of unemployed amounted to 726,360 while the number of inactive amounted to 3,272,633. The corresponding figures for December 2015 to 2020 are presented in Table 1.
- The **number of employed persons** decreased by 36,853 persons as compared with December 2019 (a 0.9% rate of decrease) and by 12,697 persons compared with November 2020 (a 0.3% rate of decrease). It should be noted that according to Eurostat guidelines concerning the Labour Force Survey, in the light of the COVID-19 pandemic, persons in lay-off are still considered employed if the duration of their contract suspension is less than 3 months or if they receive more than 50% of their salary.
- The **number of unemployed persons** decreased by 44,853 persons as compared with December 2019 (a 5.8% rate of decrease) and by 24,332 persons compared with November 2020 (a 3.2% rate of decrease).
- The **number of inactive persons**, i.e., persons that neither work nor look for a job, increased by 51,573 persons as compared with December 2019 (a 1.6% rate of increase) and by 34,611 persons compared with November 2020 (a 1.1% rate of increase). It should be noted that according to the definition of unemployed and inactive persons, if a person, who is not working, is not actively seeking work and is not currently available for work, is considered economically inactive and not unemployed.

Seasonal adjustment is a statistical technique that removes the seasonal component of a time series, making more visible the underlying trend in the change of a characteristic. Users should take into account the fact that the seasonal adjustment procedure requires data for many months in order to remove the seasonal component from a time series. As a result, several "observations" (that is, a sufficient number of monthly results) are necessary so that the time series reflects a significant change in the trend of employment and unemployment.

The monthly estimates for the number of employed, unemployed and unemployment rate can be subject to revisions in the following months caused by updates to the seasonally adjusted series whenever new monthly data are added, inclusion of the most recent quarterly Labour Force Survey (LFS) data and update of seasonal adjustment model with complete annual data.

Users should also take into account that **the first estimates of the most recent monthly unemployment rates are likely to be revised as they are produced with the collected and processed at the time of the press release survey data, which do not coincide with the finally collected and processed sample of the survey.** For that reason, monthly estimates are revised when the final quarterly estimates are known.

Information on methodological issues

Population, Employment and Cost of Living Statistics Division
Section of Labour Statistics
Dimitris Vatikiotis
Tel: +30 213 135 2173
E-mail : d.vatikiotis@statistics.gr

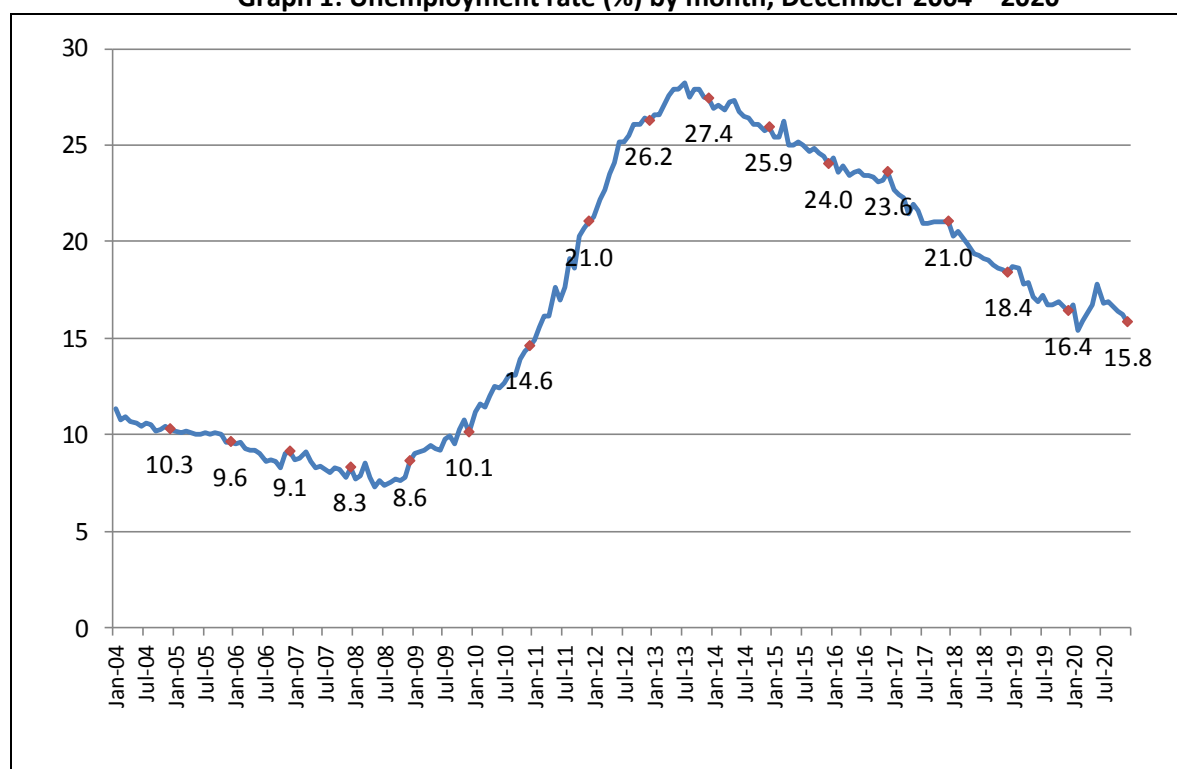
Information for data provision:

Tel. 0030 213 135 2022
e-mail: data.dissem@statistics.gr

Table 1: Employed, unemployed, economically non-active persons and unemployment rate, December 2015 – 2020

	December					
	2015	2016	2017	2018	2019	2020
Employed	3,656,955	3,670,740	3,761,027	3,864,121	3,917,217	3,880,364
Unemployed	1,151,916	1,131,822	998,566	872,673	771,213	726,360
Inactive	3,257,734	3,226,849	3,237,493	3,219,539	3,221,060	3,272,633
Unemployment Rate	24.0	23.6	21.0	18.4	16.4	15.8

Graph 1: Unemployment rate (%) by month, December 2004 – 2020



The values of the curve refer to December of each year

Tables 2 and 3 illustrate the unemployment rate by gender and age group from December 2015 to 2020. Table 4 presents the evolution of unemployment rate during the last 15 months, by Decentralized Administration. The complete time series for employed, unemployed and inactive persons as well as the unemployment rate are available on ELSTAT's website.

Table 2: Unemployment rate (%) by gender, December 2015-2020

Gender	December					
	2015	2016	2017	2018	2019	2020
Males	20.6	20.2	17.1	14.5	13.3	12.8
Females	28.1	27.7	25.8	23.3	20.4	19.5
Total	24.0	23.6	21.0	18.4	16.4	15.8

Table 3: Unemployment rate (%) by age group¹, December 2015-2020

Age Group	December					
	2015	2016	2017	2018	2019	2020
15-24	49.2	46.0	43.0	39.3	33.0	34.2
25-34	30.2	29.7	25.3	24.0	21.9	22.9
35-44	18.8	19.6	19.0	16.4	16.3	14.9
45-54	19.8	18.8	16.7	15.2	13.2	12.2
55-64	19.8	19.9	17.3	14.3	12.7	11.8
65-74	10.7	14.2	11.9	9.5	9.8	10.6
Total	24.0	23.6	21.0	18.4	16.4	15.8

Table 4: Unemployment rate (%) for the period October 2019 - December 2020, by Decentralized Administration²

Decentralized Administration	10th 2019	11th 2019	12th 2019	1st 2020	2nd 2020	3d 2020	4th 2020	5th 2020	6th 2020	7th 2020	8th 2020	9th 2020	10th 2020	11th 2020	12th 2020
Macedonia-Thrace	18.7	18.8	18.5	18.5	18.3	18.3	16.4	18.6	19.5	19.0	18.8	18.3	17.9	17.5	17.3
Epirus-Western Macedonia	19.4	19.9	20.0	20.6	20.3	16.4	15.7	17.2	17.5	17.1	22.6	21.5	20.2	18.9	18.0
Thessaly – Sterea Ellas	18.1	18.1	18.0	18.1	18.0	18.5	18.9	18.6	18.8	18.2	18.2	17.7	17.3	16.8	16.4
Peloponnese, Western Greece & Ionian Islands	16.8	15.8	17.0	15.1	15.0	15.1	13.9	19.7	19.3	17.6	19.7	17.3	16.8	17.1	15.5
Attica	15.7	15.6	15.4	14.8	14.4	14.1	13.8	13.7	13.8	14.4	13.8	13.8	13.8	14.3	14.4
Aegean Islands	13.5	16.6	12.4	13.0	12.4	10.0	22.1	25.1	22.4	18.9	16.0	17.0	20.1	17.7	18.8
Crete	11.9	12.2	12.3	13.5	13.4	13.4	24.0	21.6	19.0	17.4	21.7	18.7	17.4	15.4	15.3
Greece, Total	16.9	16.6	16.4	16.7	15.4	15.9	16.3	16.7	17.8	16.8	16.9	16.6	16.4	16.2	15.8

¹ Estimates of “rare” characteristics, that is estimates of characteristics that refer to 10,000 persons or less are accompanied by large sampling errors, as for example in the case of unemployment rate in the age group of 65 – 74 years old.

² Decentralized Administrations are the lowest geographical areas for which the Labour Force Survey (LFS) publishes estimates. LFS results are not published at lower level (i.e. NUTS 2 or NUTS 3) because, due to small population and sample size, estimates in these areas have large sampling errors. It should be noted that the same problem of small populations and sample sizes exist also in certain Decentralized Administrations and as a result, estimates in these areas have large sampling errors.

The effect of seasonal adjustment on the estimates of Labour Force Survey

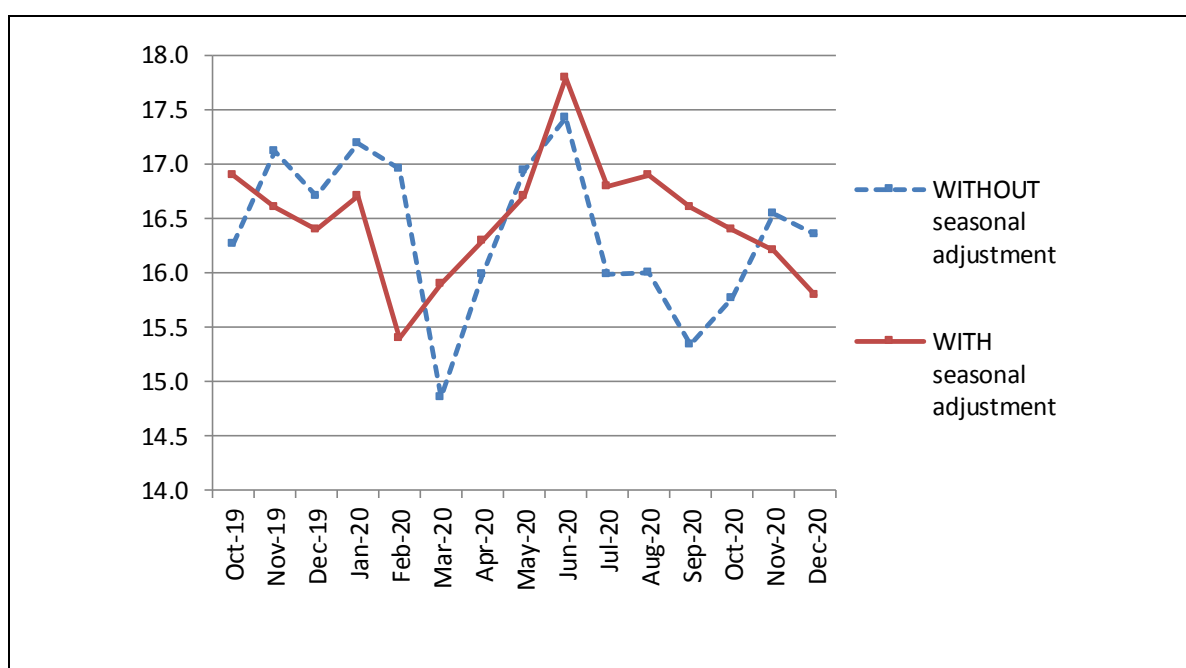
The characteristics surveyed by Labour Force Survey (number of employed, unemployed, etc.) have large seasonal variation. For example, in Greece, employment normally increases during summer months because of tourism (if there are no other countervailing factors).

Table 5 presents the change in monthly estimates of employed and unemployed persons due to seasonal adjustment for the period October 2019 – December 2020 while Graphs 2, 3 and 4 present the adjusted and unadjusted time series for employed persons, unemployed persons and the rate of unemployment for the same period.

Table 5: Change in monthly estimates of employed and unemployed persons due to seasonal adjustment

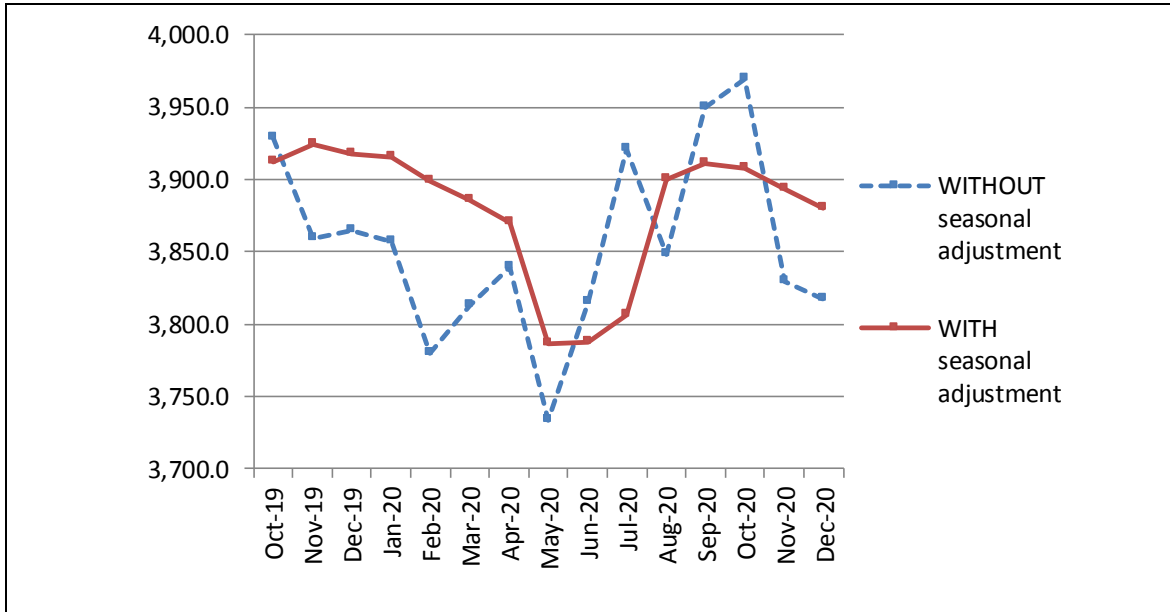
	Estimated number of employed <u>without</u> seasonal adjustment (in thousands)	Change due to seasonal adjustment (in thousands)	Change (%)	Estimated number of unemployed <u>without</u> seasonal adjustment (in thousands)	Change due to seasonal adjustment (in thousands)	Change (%)
October 2019	3,928.9	-16.5	-0.4	763.6	31.4	4.1
November 2019	3,859.2	64.5	1.7	796.9	-18.4	-2.3
December 2019	3,864.2	53.0	1.4	774.8	-3.6	-0.5
January 2020	3,857.1	57.7	1.5	800.5	-13.8	-1.7
February 2020	3,779.2	119.6	3.2	771.6	-63.2	-8.2
March 2020	3,813.0	72.8	1.9	665.4	67.2	10.1
April 2020	3,839.3	30.6	0.8	730.3	25.9	3.6
May 2020	3,733.9	52.7	1.4	761.5	-0.3	0.0
June 2020	3,815.2	-28.0	-0.7	805.4	16.8	2.1
July 2020	3,921.1	-114.6	-2.9	746.1	23.5	3.2
August 2020	3,847.7	51.8	1.3	733.3	57.3	7.8
September 2020	3,949.7	-39.0	-1.0	715.3	61.0	8.5
October 2020	3,969.6	-61.7	-1.6	743.3	24.9	3.4
November 2020	3,829.4	63.7	1.7	758.9	-8.2	-1.1
December 2020	3,817.3	63.1	1.7	746.0	-19.6	-2.6

Graph 2: Unemployment Rate (%) - Adjusted and Non-adjusted Estimates



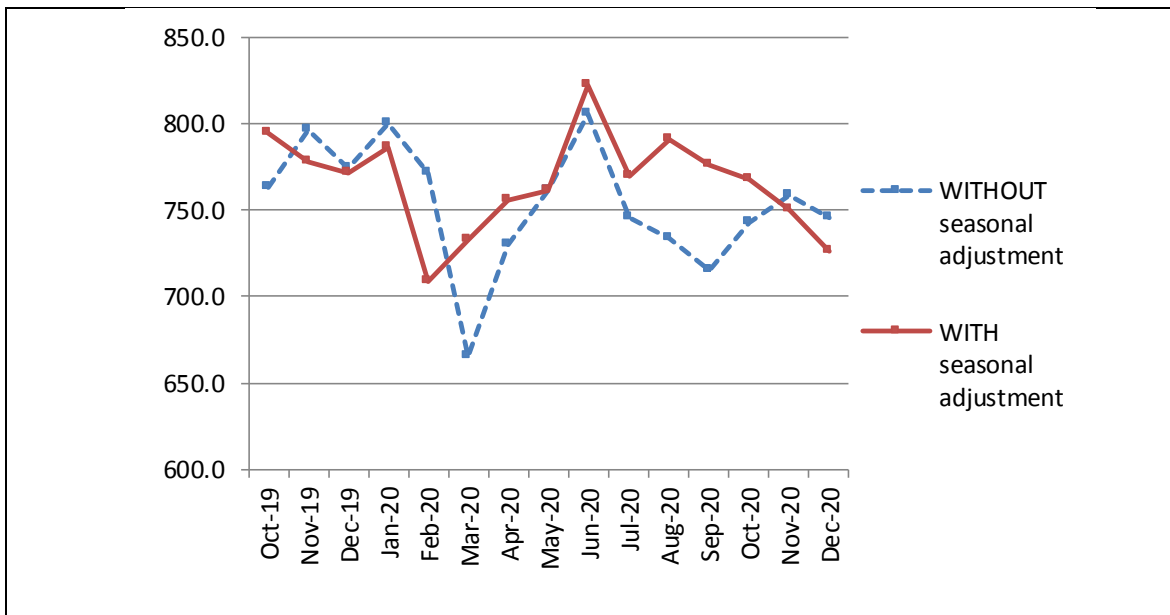
(in thousands)

Graph 3: Number of Employed Persons - Adjusted and Non-adjusted Estimates



(in thousands)

Graph 4: Number of Unemployed Persons - Adjusted and Non-adjusted Estimates



(in thousands)

Revisions of monthly estimates

The monthly estimates, for the number of employed and unemployed persons and unemployment rate, can be subject to revisions in the following months caused by updates to the seasonally adjusted series whenever new monthly data are added, inclusion of the most recent quarterly Labour Force Survey data and update of the seasonal adjustment model with complete annual data. In the current press release the estimation of unemployment rate for the period October 2019 – November 2020 has been revised (compared to the estimation published in the previous press-release) as follows:

Table 6: Comparison of seasonally adjusted estimates

	Estimations published in February 2020	Estimations published in the current press release
October 2019	16.7	16.9
November 2019	16.6	16.6
December 2019	16.5	16.4
January 2020	16.4	16.7
February 2020	15.5	15.4
March 2020	15.7	15.9
April 2020	16.2	16.3
May 2020	16.9	16.7
June 2020	17.9	17.8
July 2020	16.7	16.8
August 2020	17.0	16.9
September 2020	16.6	16.6
October 2020	16.4	16.4
November 2020	16.2	16.2
December 2020	-	15.8

EXPLANATORY NOTES

Labour Force Survey	The Labour Force Survey has been conducted since 1981. Until 1997 the results were produced on an annual basis with reference to the second quarter of each year. From 1998 onwards it is a continuous quarterly survey. The main statistical objectives of the Labour Force Survey is to divide the population of working age (15 years and over) into three mutually exclusive and exhaustive groups - persons in employment, unemployed persons and inactive persons. In addition, the Labour Force Survey collects information on demographic characteristics, on main job characteristics, on the existence and characteristics of a second job, on educational attainment, on participation in education, on previous working experience and on search of job.
Legislation	The current survey is fully harmonized with European legislation. The principal legal act is the <u>Council Regulation (EC) No. 577/98</u> that stipulates the provisions on design, survey characteristics and decision-making processes.
Reference Period	The sample of Labour Force Survey is equally allocated to the 4 (or 5) weeks of the month. Every selected household is assigned to a specific week, the reference week, running from Monday to Sunday.
Coverage	For the monthly estimates, a sub-sample of the quarterly Labour Force survey's sample is used.
Definitions	<p>Employed are persons aged 15 years or older, who during the reference week worked, even for just one hour, for pay or profit or they were working in the family business, or they were not at work but had a job or business from which they were temporarily absent.</p> <p>Unemployed are persons aged 15-74 who were without work during the reference week (they were not classified as employed), were currently available for work and were either actively seeking work in the past four weeks or had already found a job to start within the next three months.</p> <p>Inactive are those persons who are neither classified as employed nor as unemployed. Included are persons who are available to work but not seeking, persons who are looking for a job but are not immediately available, as well as persons who neither seek work nor are immediately available (such as children's caretakers, pensioners, housewives, students etc.).</p> <p>Economically active population (labour force) are persons either employed or unemployed.</p> <p>Unemployment Rate is the ratio of unemployed divided by total labour force.</p>
Seasonal adjustment	Seasonal adjustment is a statistical technique that removes the seasonal component of a time series, making more visible the underlying trend in the change of a characteristic. Hellenic Statistical Authority is using Demetra 2.0 for seasonal adjustment. Seasonally adjusted series are produced by TRAMO&SEATS algorithm. It should be noted that due to seasonal adjustment the whole series with monthly estimates is recalculated every time a new month is added in time series. As a result, estimations for the previous months are often revised.
Sampling errors	The monthly results of Labour Force Survey are estimations that are based in a relatively small sample size and have large sampling errors. An indication of the magnitude of survey's sampling errors is that estimations of characteristics that refer to 25,000 persons at the total country are accompanied by a coefficient of variation of at least 15%. More accurate estimates and detailed analysis of the changes in employment can be based on the quarterly results of the survey.
Methodology	Labour Force Survey's estimates are produced by a suitable unbiased estimator which takes in to account a) the probability of selection of every sampled household, b) the response rate in every primary sampling unit, c) the estimated population, for the corresponding month, allocated by NUTS II areas, gender and age group.
Data collection during the pandemic period of coronavirus disease (COVID-19)	The Labor Force Survey collects data from households by personal or telephone interviews. As of 11 November 2020, for reasons of public health protection, personal interviews are suspended, and data are collected exclusively by way of telephone interviews.
References	Analytical description of the Labour Force Survey's methodology and definitions can be found at http://www.statistics.gr/en/statistics/-/publication/SJO02/