



PRESS RELEASE

TURNOVER INDEX IN TRANSPORT SECTOR: 4th Quarter 2020

The Hellenic Statistical Authority (ELSTAT) announces the Turnover Indices in Transport Sector, with base year 2015=100.0, for the 4th quarter 2020, the evolution of which according to provisional and reduced data to a typical quarter, is as follows:

Year on Year growth rates

- The Turnover Index in “Land transport and transport via pipelines, division 49” during the 4th quarter 2020 compared to the 4th quarter 2019 decreased by 12.8%, while a decrease of 3.3% was observed for the corresponding period of 2019 compared to 2018 (Table 1, Graph 1).
- The Turnover Index in “Water transport, division 50” during the 4th quarter 2020 compared to the 4th quarter 2019 decreased by 24.5%, while an increase of 8.5% was observed for the corresponding period of 2019 compared to 2018 (Table 1, Graph 2).
- The Turnover Index in “Air transport, division 51” during the 4th quarter 2020 compared to the 4th quarter 2019 decreased by 44.6%, while an increase of 7.2% was observed for the corresponding period of 2019 compared to 2018 (Table 2, Graph 3).
- The Turnover Index in “Warehousing and support activities for transportation, division 52” during the 4th quarter 2020 compared to the 4th quarter 2019 decreased by 9.4%, while an increase of 12.1% was observed for the corresponding period of 2019 compared to 2018 (Table 2, Graph 4).
- The Turnover Index in “Travel agency, tour operator reservation service and related activities, division 79” during the 4th quarter 2020 compared to the 4th quarter 2019 decreased by 70.5%, while an increase of 0.4% was observed for the corresponding period of 2019 compared to 2018 (Table 3, Graph 5).

Information on methodological issues :

Division of Business Statistics
Section of Trade and Service Indices
Head of the Section : Konstantinos Thomas
Tel : +30 213 135 2048
Fax : +30 213 135 2714
E-mail : k.thomas@statistics.gr

Information on data provision:

Tel: +30 213 135 2022, 2308, 2310
E-mail: data.dissem@statistics.gr

Quarter on Quarter growth rates

- The Turnover Index in “Land transport and transport via pipelines, division 49” during the 4th quarter 2020 compared to the 3rd quarter 2020 increased by 7.2%, while the decrease for the corresponding period of 2019, was 4.3% (Table 1, Graph 1).
- The Turnover Index in “Water transport, division 50” during the 4th quarter 2020 compared to the 3rd quarter 2020 decreased by 29.0%, while the decrease for the corresponding period of 2019, was 33.7% (Table 1, Graph 2).
- The Turnover Index in “Air transport, division 51” during the 4th quarter 2020 compared to the 3rd quarter 2020 decreased by 5.5%, while the decrease for the corresponding period of 2019, was 47.1% (Table 2, Graph 3).
- The Turnover Index in “Warehousing and support activities for transportation, division 52” during the 4th quarter 2020 compared to the 3rd quarter 2020 increased by 4.4%, while the decrease for the corresponding period of 2019, was 6.8% (Table 2, Graph 4).
- The Turnover Index in “Travel agency, tour operator reservation service and related activities, division 79” during the 4th quarter 2020 compared to the 3rd quarter 2020 decreased by 48.8%, while the decrease for the corresponding period of 2019, was 56.4% (Table 3, Graph 5).

The tables and graphs that follow, present the evolution of the indices from the 1st Quarter of 2015 to the 4th Quarter of 2020.

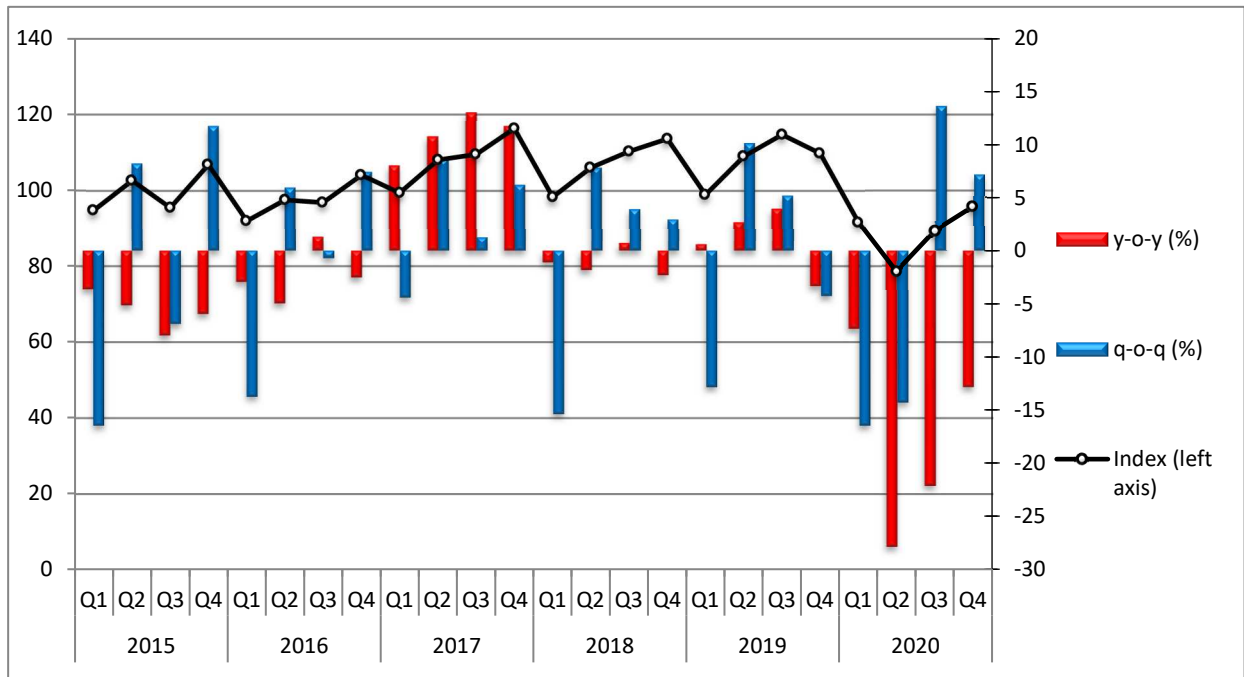
Table 1. Turnover Indices in Land transport and transport via pipelines (division 49, NACE Rev.2) and in Water transport (division 50, NACE Rev.2), Base year: 2015=100.0

Year	Quarter	Index (div 49)	y-o-y change (%)	q-o-q change (%)	Index (div 50)	y-o-y change (%)	q-o-q change (%)
2015	Q1	94.9	-3.7	-16.5	63.6	-3.3	-23.5
	Q2	102.7	-5.2	8.2	104.2	4.2	63.8
	Q3	95.6	-8.0	-6.9	154.9	-5.6	48.7
	Q4	106.8	-6.0	11.7	77.3	-7.0	-50.1
	Annual average	100.0	-5.7		100.0	-3.1	
2016	Q1	92.1	-3.0	-13.8	63.8	0.3	-17.5
	Q2	97.6	-5.0	6.0	98.2	-5.8	53.9
	Q3	96.9	1.4	-0.7	151.4	-2.3	54.2
	Q4	104.1	-2.5	7.4	68.4	-11.5	-54.8
	Annual average	97.7	-2.3		95.5	-4.6	
2017	Q1	99.5	8.0	-4.4	55.3	-13.3	-19.2
	Q2	108.1	10.8	8.6	87.0	-11.4	57.3
	Q3	109.5	13.0	1.3	136.1	-10.1	56.4
	Q4	116.3	11.7	6.2	66.9	-2.2	-50.8
	Annual average	108.4	10.9		86.3	-9.6	
2018	Q1	98.4	-1.1	-15.4	55.5	0.4	-17.0
	Q2	106.1	-1.9	7.8	94.0	8.0	69.4
	Q3	110.3	0.7	4.0	120.6	-11.4	28.3
	Q4	113.6	-2.3	3.0	74.5	11.4	-38.2
	Annual average	107.1	-1.2		86.2	-0.2	
2019	Q1	99.0	0.6	-12.9	67.7	22.0	-9.1
	Q2	109.0	2.7	10.1	96.0	2.1	41.8
	Q3	114.7	4.0	5.2	121.9	1.1	27.0
	Q4	109.8	-3.3	-4.3	80.8	8.5	-33.7
	Annual average	108.1	1.0		91.6	6.3	
2020	Q1	91.7	-7.4	-16.5	65.3	-3.5	-19.2
	Q2	78.6	-27.9	-14.3	58.9	-38.6	-9.8
	Q3	89.3 ⁽¹⁾	-22.1	13.6	85.9	-29.5	45.8
	Q4 ⁽²⁾	95.7	-12.8	7.2	61.0	-24.5	-29.0
	Annual average⁽²⁾	88.8	-17.8		67.8	-26.0	

⁽¹⁾ Revised data

⁽²⁾ Provisional data

Graph 1. Evolution of Turnover Index in Land transport and transport via pipelines (division 49, NACE Rev.2)
Base year: 2015=100.0



Graph 2. Evolution of Turnover Index in Water transport (division 50, NACE Rev.2), Base year: 2015=100.0

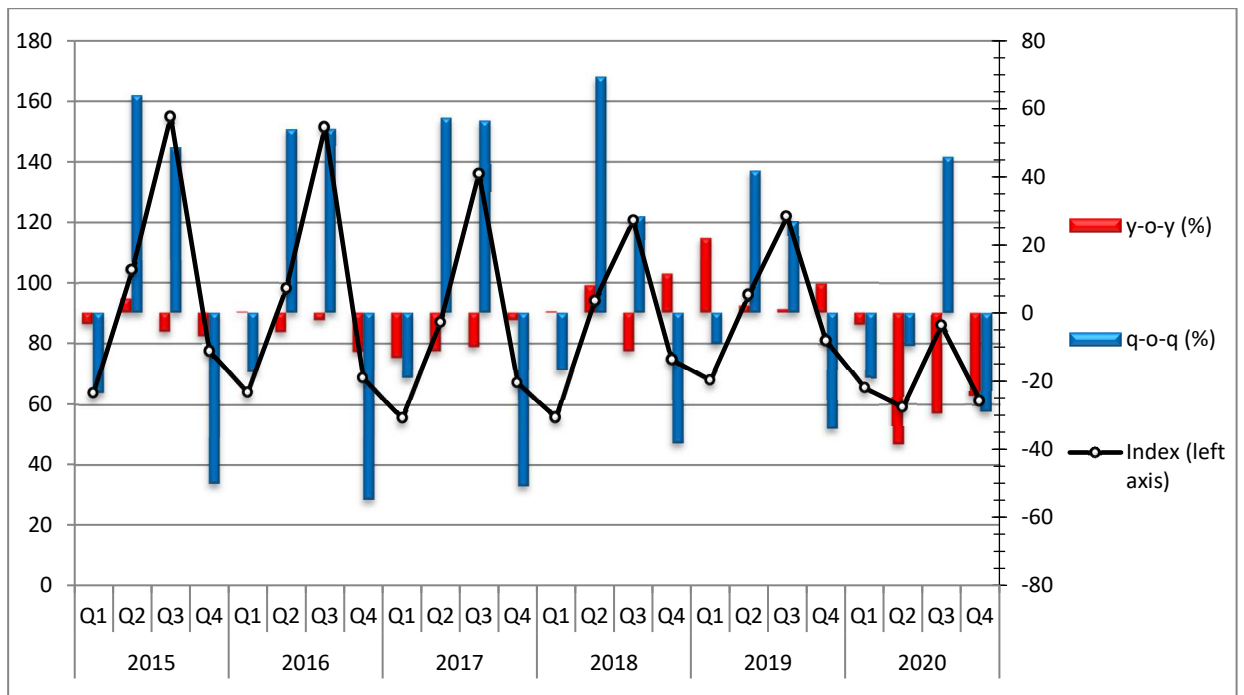
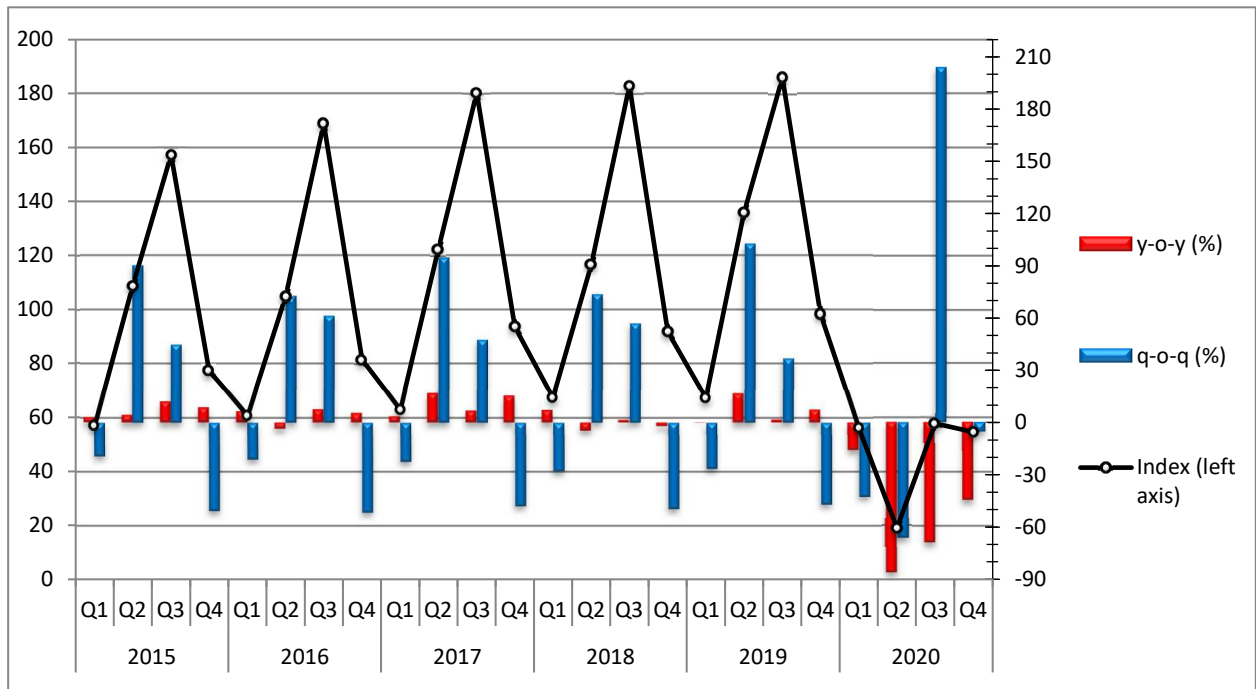


Table2. Turnover Indices in Air transport (division 51, NACE Rev.2) and in Warehousing and support activities for transportation (division 52, NACE Rev.2), Base year: 2015=100.0

Year	Quarter	Index (div 51)	y-o-y change (%)	q-o-q change (%)	Index (div 52)	y-o-y change (%)	q-o-q change (%)
2015	Q1	57.1	3.1	-19.7	92.7	10.8	-13.0
	Q2	108.6	4.2	90.2	102.0	4.6	10.0
	Q3	157.2	11.9	44.8	96.9	-3.6	-5.0
	Q4	77.2	8.6	-50.9	108.3	1.7	11.8
	Annual average	100.0	7.8		100.0	3.0	
2016	Q1	60.7	6.3	-21.4	100.1	8.0	-7.6
	Q2	104.8	-3.5	72.7	109.3	7.2	9.2
	Q3	168.9	7.4	61.2	114.1	17.8	4.4
	Q4	81.3	5.3	-51.9	109.1	0.7	-4.4
	Annual average	103.9	3.9		108.2	8.2	
2017	Q1	62.8	3.5	-22.8	99.2	-0.9	-9.1
	Q2	122.2	16.6	94.6	120.1	9.9	21.1
	Q3	180.2	6.7	47.5	123.1	7.9	2.5
	Q4	93.6	15.1	-48.1	125.0	14.6	1.5
	Annual average	114.7	10.4		116.9	8.0	
2018	Q1	67.2	7.0	-28.2	113.4	14.3	-9.3
	Q2	116.6	-4.6	73.5	133.5	11.2	17.7
	Q3	182.8	1.4	56.8	136.3	10.7	2.1
	Q4	91.7	-2.0	-49.8	126.4	1.1	-7.3
	Annual average	114.6	-0.1		127.4	9.0	
2019	Q1	67.1	-0.1	-26.8	120.0	5.8	-5.1
	Q2	135.8	16.5	102.4	148.1	10.9	23.4
	Q3	185.9	1.7	36.9	152.0	11.5	2.6
	Q4	98.3	7.2	-47.1	141.7	12.1	-6.8
	Annual average	121.8	6.3		140.5	10.2	
2020	Q1	56.3	-16.1	-42.7	119.3	-0.6	-15.8
	Q2	19.0	-86.0	-66.3	109.2	-26.3	-8.5
	Q3	57.7	-69.0	203.7	123.0	-19.1	12.6
	Q4 ⁽¹⁾	54.5	-44.6	-5.5	128.4	-9.4	4.4
	Annual average⁽¹⁾	46.9	-61.5		120.0	-14.6	

⁽¹⁾ Provisional data

Graph 3. Evolution of Turnover Index in Air transport (division 51, NACE Rev.2), Base year: 2015=100.0



Graph 4. Evolution of Turnover Index in Warehousing and support activities for transportation (division 52, NACE Rev.2), Base year: 2015=100.0

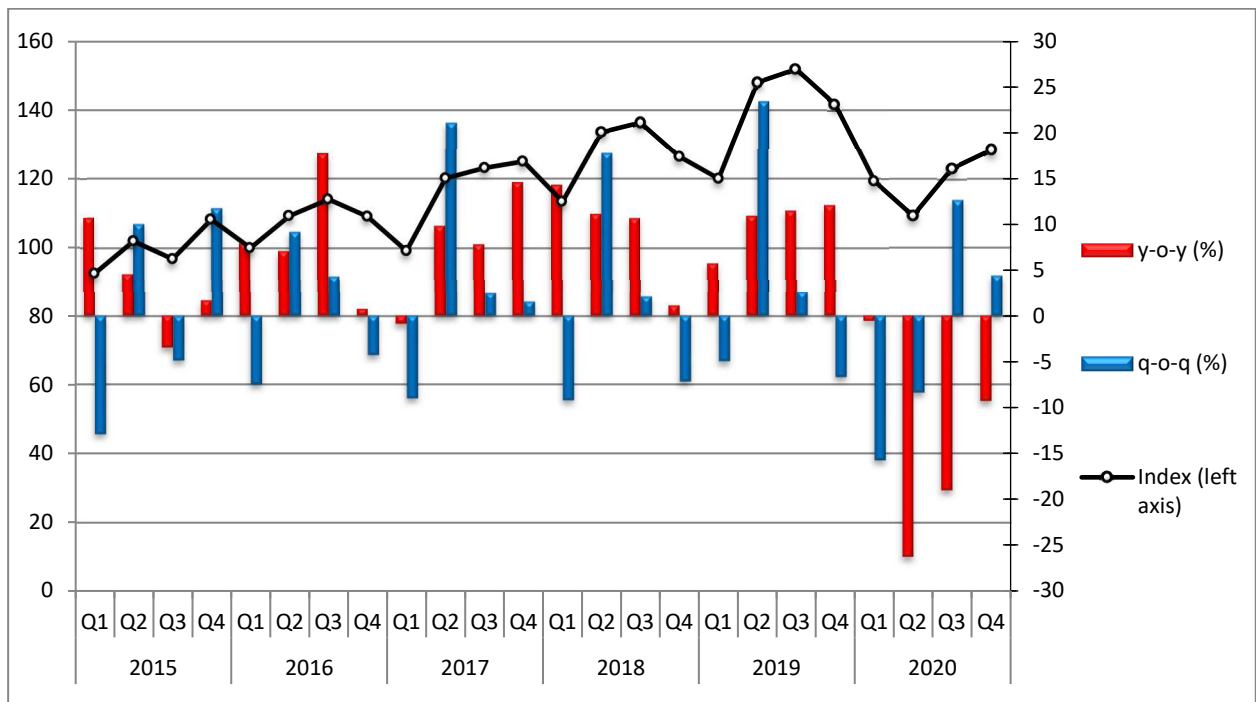
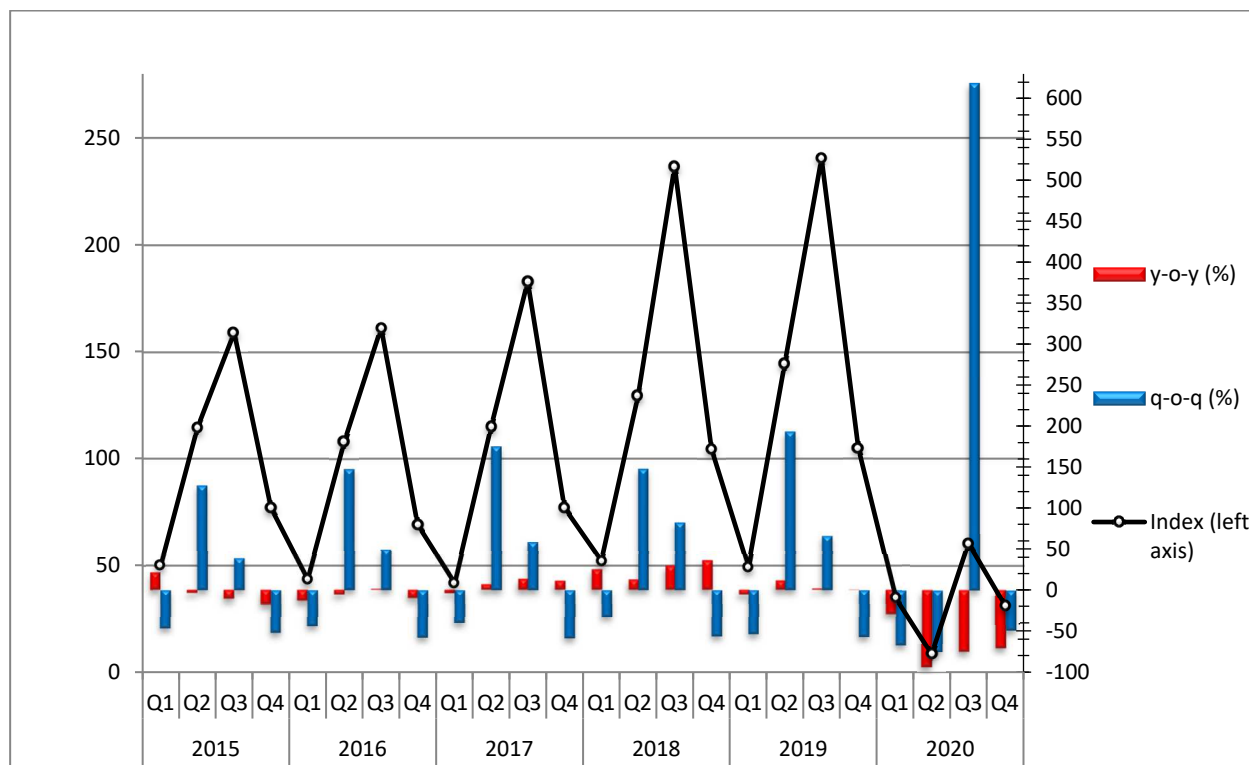


Table 3. Turnover Index in Travel agency, tour operator reservation service and related activities (division 79, NACE Rev. 2), Base year: 2015=100.0

Year	Quarter	Index (div 79)	y-o-y change (%)	q-o-q change (%)
2015	Q1	50.1	21.3	-46.2
	Q2	114.2	-3.9	127.9
	Q3	158.9	-11.0	39.1
	Q4	76.8	-17.5	-51.7
	Annual average	100.0	-7.4	
2016	Q1	43.5	-13.2	-43.4
	Q2	107.7	-5.7	147.6
	Q3	161.1	1.4	49.6
	Q4	69.0	-10.2	-57.2
	Annual average	95.3	-4.7	
2017	Q1	41.7	-4.1	-39.6
	Q2	114.9	6.7	175.5
	Q3	182.7	13.4	59.0
	Q4	76.7	11.2	-58.0
	Annual average	104.0	9.1	
2018	Q1	52.1	24.9	-32.1
	Q2	129.3	12.5	148.2
	Q3	236.7	29.6	83.1
	Q4	104.4	36.2	-55.9
	Annual average	130.6	25.6	
2019	Q1	49.2	-5.6	-52.9
	Q2	144.3	11.6	193.5
	Q3	240.5	1.6	66.7
	Q4	104.8	0.4	-56.4
	Annual average	134.7	3.1	
2020	Q1	35.0	-28.8	-66.6
	Q2	8.4	-94.2	-76.0
	Q3	60.3	-74.9	617.9
	Q4 ⁽¹⁾	30.9	-70.5	-48.8
	Annual average ⁽¹⁾	33.7	-75.0	

⁽¹⁾ Provisional data

Graph 5. Evolution of Turnover Index in Travel agency, tour operator reservation service and related activities (division 79, NACE Rev. 2), Base year: 2015=100.0



METHODOLOGICAL NOTES

Generally	The Turnover Indices in Transport Sector are quarterly business cycle indices, which were first released in 2005, with base year (b.y.) the year 2005=100.0.
Purpose of the index – definitions	The purpose of these indices is to calculate the activity of the surveyed sector in value terms. The turnover comprises the totals invoiced by the observation units during the reference period (quarter) and corresponds to the market sales of goods and services supplied to third parties. Subsidies on goods or services are also included. Turnover excludes VAT and other similar deductible taxes directly linked to turnover as well as all duties and taxes on the goods or services invoiced by the units. Income classified as other operating income, financial income and extraordinary income in company accounts are also excluded from turnover.
Legal framework	The compilation of the Turnover Indices in Transport Sector is governed by the Council Regulation (EC) No. 1165/98 of 19 th May 1998 concerning “Short Term Statistics”. Additionally, the compilation of the above index is governed by Regulation No. 1893/2006 of the European Parliament and of the Council of 20 th December 2006, establishing the statistical classification of economic activities NACE Rev.2.
Reference period	Quarter.
Base year	2015=100.0.
Revision	Pursuant to the provisions of Council Regulation No. 1165/98 concerning “Short Term Statistics”, the indices are revised every five (5) years, in years ending in 0 or 5. The purpose of revising these turnover indices is their adjustment to the recent developments in the structure of the transport sector.
Statistical classification	The NACE Rev.2 statistical classification of economic activities is used, in conformity with Regulation (EC) No. 1893/2006 of the European Parliament and of the Council.
Geographical coverage	The indices cover the whole of the country.
Coverage of economic activities	The indices cover the codes for divisions: 49 (land transport / transport via pipelines), 50 (water transport), 51 (air transport), 52 (warehousing and support activities for transportation) and 79 (travel agency, tour operator reservation service and related activities) of NACE Rev.2 statistical classification.
Statistical survey	The indices include enterprises with an annual turnover (in year 2015) equal or greater than 70,000€, from which a random representative sample of 440 enterprises was therefore selected and surveyed.
Data collection, processing and imputation in the context of the COVID-19 pandemic	The compilation of the indices of the 4 th quarter 2020 was based on data collected by enterprises, administrative sources and the use of an estimation method for the calculation of the missing data. Few estimations of data at enterprise level were used, at group and stratum level (class), based on collected data by enterprises.
Calculating the indices	The indices are calculated by the implementation of the chaining method. Initially the moving base index is calculated by comparing the estimated turnover value for the current quarter with the corresponding value of the previous quarter. Afterwards, the fixed base index for the current quarter is calculated by multiplying the moving base index by the fixed base index of the previous quarter. Then, the indices are reduced to a typical quarter by multiplying the estimated turnover values by a specific weighting coefficient according to the number of working days of each quarter. The typical quarter refers to the actual number of working days.
Compiled index series	Timeseries of the indices are compiled from the 1 st quarter 2000 with base year 2015=100.0. Since the 3 rd quarter 2018, shipping companies that are established as branches of foreign enterprises and operate in overseas shipping (enterprises of Law 27/1975, article 25) are included in the sample of the companies of the water transport sector (division 50).
Publication of data	The Turnover Indices in Transport Sector (b.y.: 2015=100.0) are released quarterly since the 3 rd quarter 2018, with retrospective data from the 1 st quarter 2000.
References	More information on the methodology for compiling and calculating the Turnover Indices in Transport Sector, as well as on the timeseries, can be found on ELSTAT website: http://www.statistics.gr/en/statistics/-/publication/DKT48/