



## PRESS RELEASE

### SURVEY ON SECONDARY VOCATIONAL EDUCATION END OF SCHOOL YEAR 2017/2018

The Hellenic Statistical Authority (ELSTAT) announces data on Secondary Vocational Education (Vocational Upper Secondary Schools (EPAL) and the Vocational Schools (EPAS)) deriving from the relevant survey for the end of the school year 2017/2018. The survey results can be summarized as follows:

- The **school units** during the school year 2017/2018, amounted to 456 in comparison with 454 in the school year 2016/2017 (Table 2).
- **Teaching staff** in the school year 2017/2018 compared with the corresponding number in the school year 2016/2017, decreased from 12,568 to 12,536 (Table 2).
- **The number of pupils enrolled** in the school year 2017/2018, compared with the corresponding number in the school year 2016/2017, decreased from 98,568 to 97,452 (Table 3).
- **The number of graduates** in the school year 2017/2018 compared with the corresponding number in the school year 2016/2017, decreased from 28,495 to 26,610 (Table 3).
- **The ratio of teaching staff to pupils**, in the school year 2017/2018, was 1 teacher for 7.8 pupils, similar to the corresponding ratio in the school year 2016/2017 (Tables 2 and 3).
- The **Region of Attiki** in the school year 2017/2018 accounted for 27.3% of the total pupil population of all the EPAS and EPAL in Greece (Graph 4).

**Information on methodological issues:**

Division of Sectoral Statistics  
Section of Education & Sports Statistics  
Head of the Section: Antonios Kritikos  
Tel: +30 213 135 2134, 2782  
Fax: +30 213 135 2780  
e-mail: a.kritikos@statistics.gr

**Information for data provision:**

Tel. +30 213 135 2022, 2310  
Email. Data.dissem@statistics.gr

More specifically, Table 1 and Graph 1 depict the evolution of pupil population in Secondary Vocational Education during the period 2008/2009 to 2017/2018.

**Table 1**  
**Evolution of pupil population in Secondary Vocational Education**  
**2008/09 – 2017/18**

School Year	Pupils Enrolled
2008/2009	108,010
2009/2010	110,771
2010/2011	113,658
2011/2012	121,008
2012/2013	123,989
2013/2014	109,917
2014/2015	101,761
2015/2016	98,772
2016/2017	98,568
2017/2018	97,452

**Graph 1**  
**Evolution of pupil population in Secondary Vocational Education**  
**2008/09 – 2017/18**

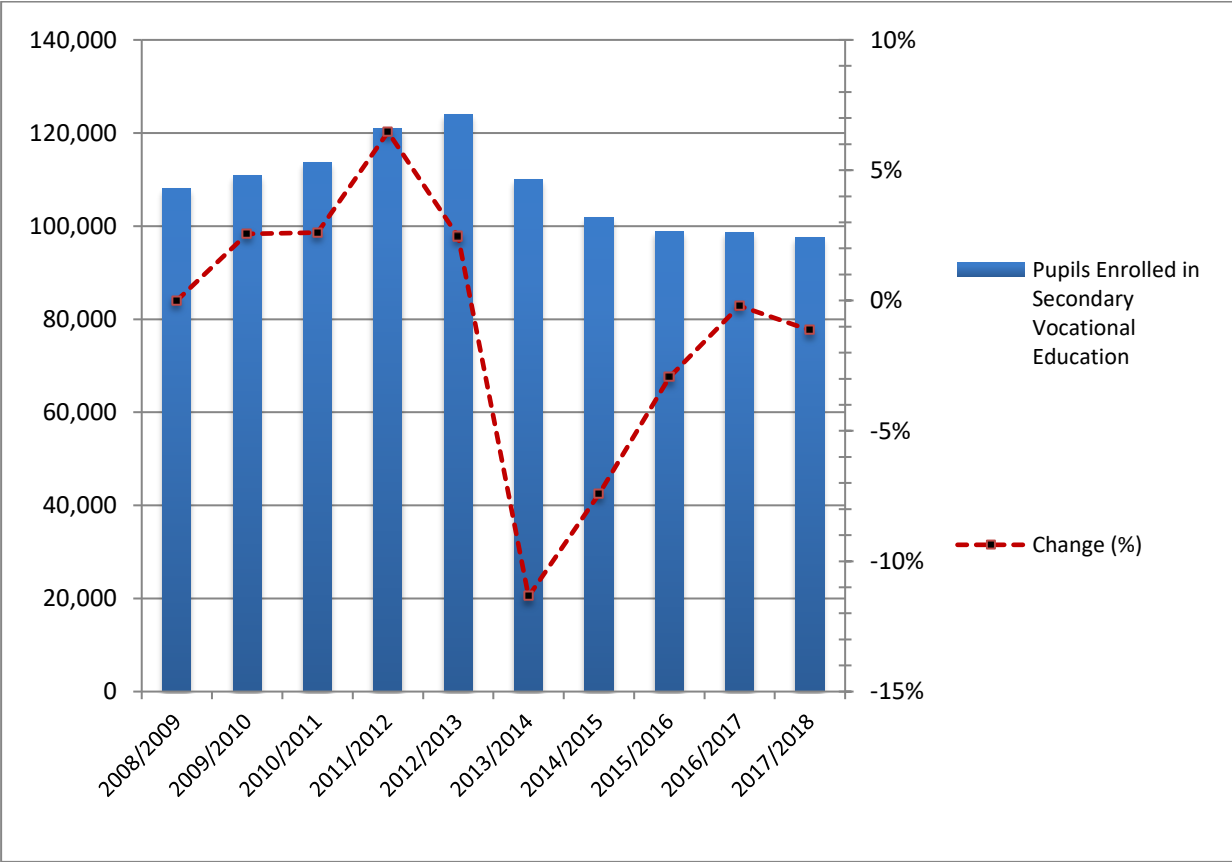


Table 2 presents data on the number of the school units and teaching staff for school years 2016/2017 and 2017/2018.

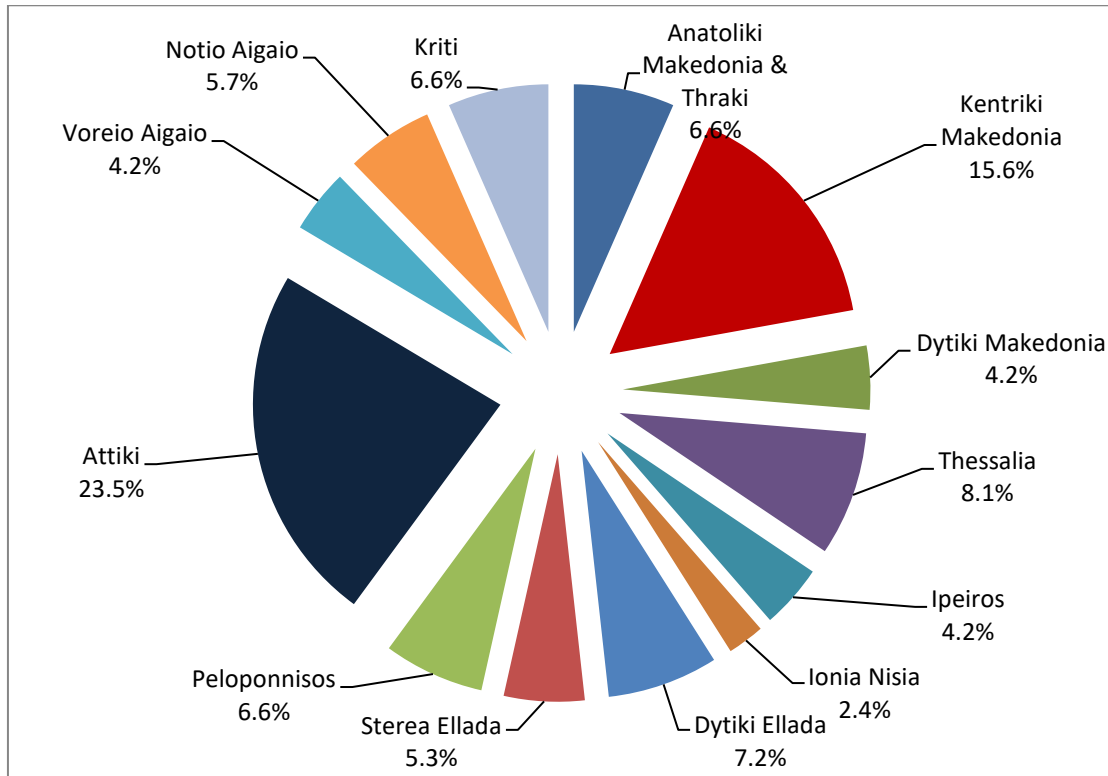
**Table 2. Number of school units and teaching staff<sup>1</sup>**

<i>By Type of school unit</i>						
School units	Number of school units			Teaching staff		
	2016/17	2017/18	Change (%)	2016/17	2017/18	Change (%)
EPAL of the Ministry of Education and Religious Affairs	398	400	0.5	11,021	10,958	-0.6
EPAS of the Ministry of Labour and Social Affairs	50	50	0	1,484	1,510	1.8
EPAS of the Ministry of Rural Development and Food	6	6	0	63	68	7.9
<b>TOTAL</b>	<b>454</b>	<b>456</b>	<b>0,4</b>	<b>12,568</b>	<b>12,536</b>	<b>-0.3</b>
<i>By Region</i>						
Region (NUTS 2)	Number of school units			Teaching staff		
	2016/17	2017/18	Change (%)	2016/17	2017/18	Change (%)
Anatoliki Makedonia, Thraki	30	30	0	821	805	-1.9
Kentriki Makedonia	70	71	1.4	2,332	2,349	0.7
Dytiki Makedonia	19	19	0	585	584	-0.2
Thessalia	37	37	0	1,081	1,083	0.2
Ipeiros	19	19	0	476	482	1.3
Ionia Nisia	11	11	0	260	254	-2.3
Dytiki Ellada	33	33	0	846	816	-3.5
Stereia Ellada	24	24	0	550	567	3.1
Peloponnisos	30	30	0	630	624	-1.0
Attiki	107	107	0	3,038	3,018	-0.7
Voreio Aigaio	19	19	0	413	429	3.9
Notio Aigaio	26	26	0	599	597	-0.3
Kriti	29	30	3.4	937	928	-1.0
<b>TOTAL</b>	<b>454</b>	<b>456</b>	<b>0.4</b>	<b>12,568</b>	<b>12,536</b>	<b>-0.3</b>

<sup>1</sup> Absent teachers are also included.

*Absent teachers* are the teachers with a fixed post in the school unit, who are absent for more than 20 days (due to illness, training, maternity leave, etc) and their replacement is pending, as well as the teachers who are seconded to other administrative posts of the Ministry of Education and Religious Affairs or elsewhere.

**Graph 2. Percentage distribution of school units by NUTS 2 region, school year 2017/18**



**Graph 3. Teaching staff by NUTS 2 region, school year 2017/18**

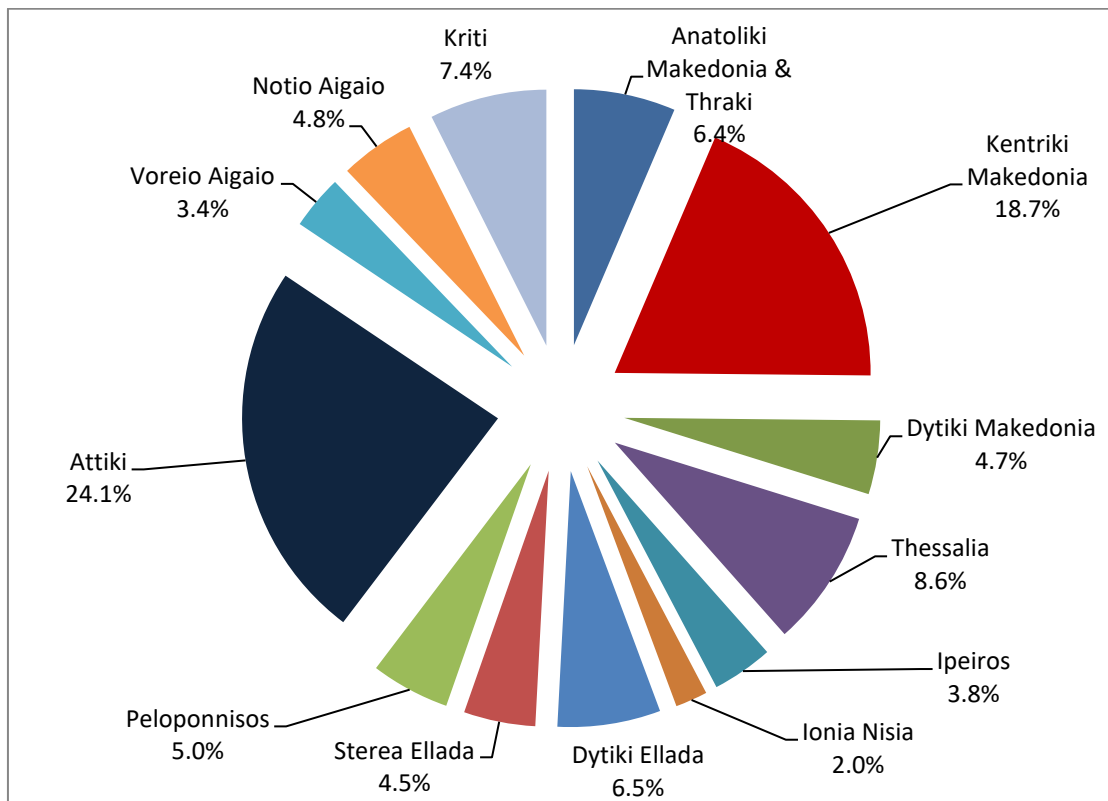
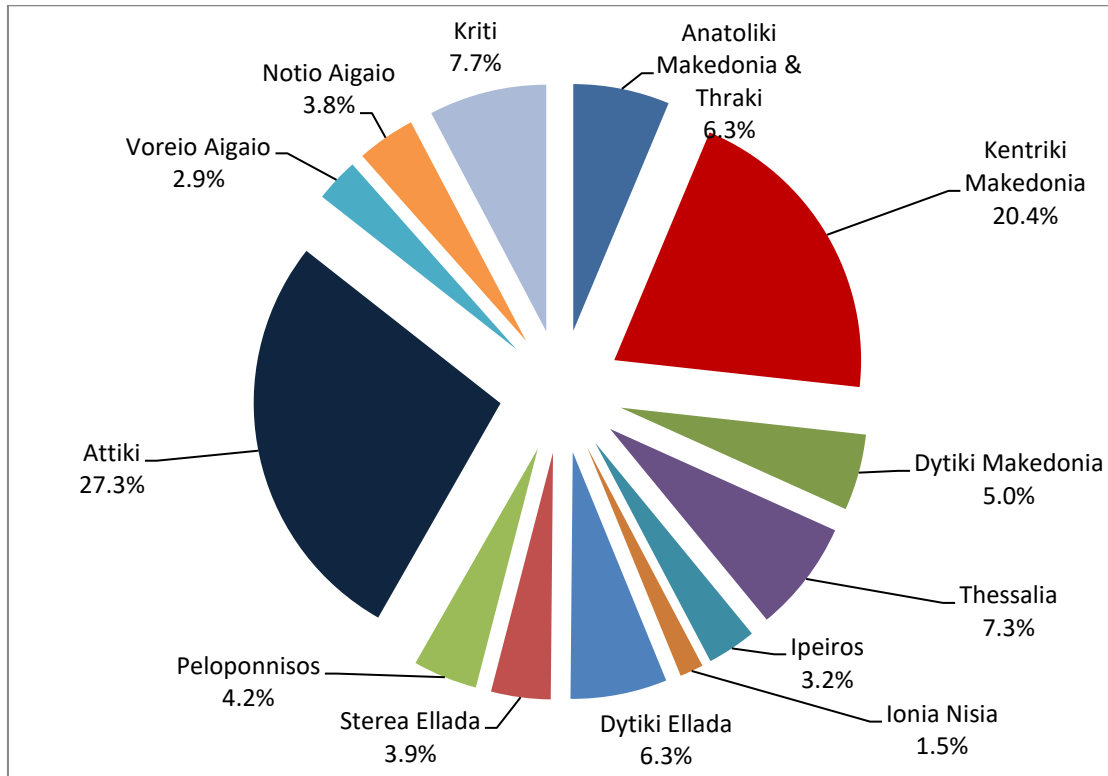


Table 3 presents data on the number of enrolled pupils and graduates for school years 2016/2017 and 2017/2018.

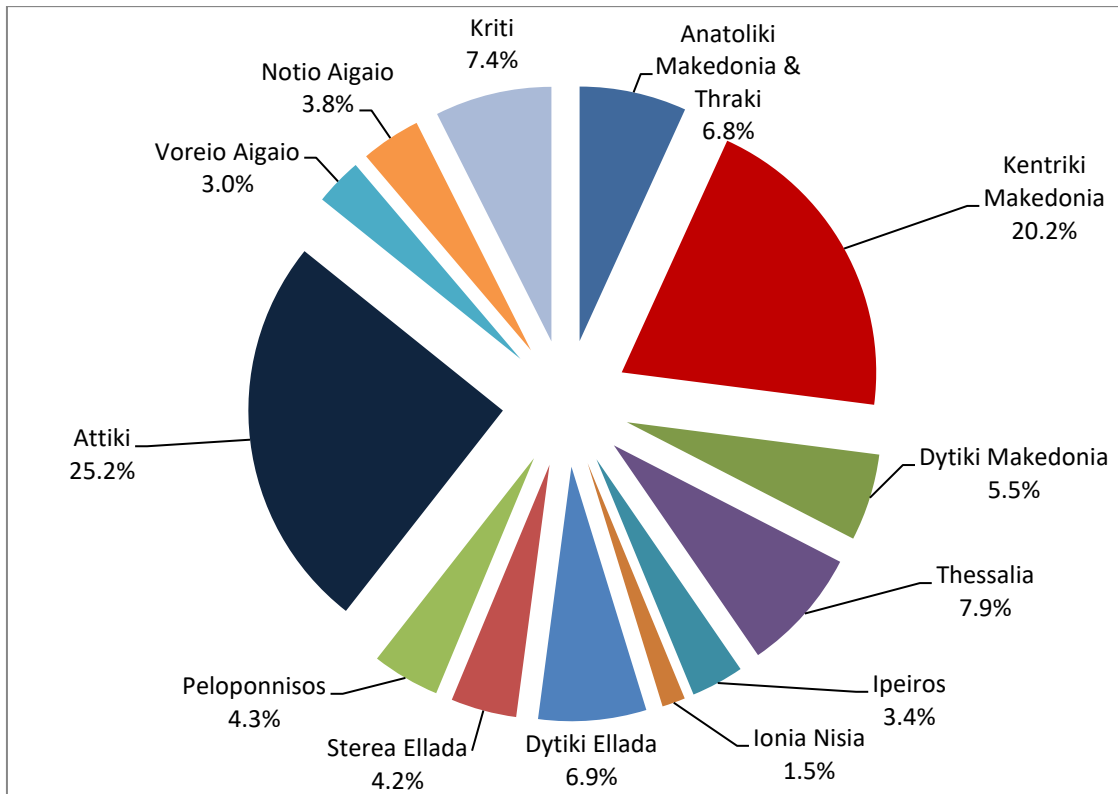
**Table 3. Pupils enrolled and graduates by type of school unit and region**

<i>By Type of School Unit</i>						
School units	Pupils enrolled			Graduates		
	2016/17	2017/18	Change (%)	2016/17	2017/18	Change (%)
EPAL of the Ministry of Education and Religious Affairs	88,695	88,312	-0.4	24,316	22,880	-5.9
EPAS of the Ministry of Labour and Social Affairs	9,597	8,880	-7.5	4,019	3,586	-10.8
EPAS of the Ministry of Rural Development and Food	276	260	-5.8	160	144	-10.0
<b>TOTAL</b>	<b>98,568</b>	<b>97,452</b>	<b>-1.1</b>	<b>28,495</b>	<b>26,610</b>	<b>-6.6</b>
<i>By Region</i>						
Region (NUTS 2)	Pupils enrolled			Graduates		
	2016/17	2017/18	Change (%)	2016/17	2017/18	Change (%)
Anatoliki Makedonia, Thraki	6,348	6,151	-3.1	1,967	1,810	-8.0
Kentriki Makedonia	19,752	19,911	0.8	5,712	5,384	-5.7
Dytiki Makedonia	5,218	4,867	-6.7	1,627	1,471	-9.6
Thessalia	7,254	7,130	-1.7	2,188	2,090	-4.5
Ipeiros	3,037	3,136	3.3	862	892	3.5
Ionia Nisia	1,774	1,506	-15.1	511	392	-23.3
Dytiki Ellada	6,394	6,167	-3.6	1,940	1,824	-6.0
Stereia Ellada	3,938	3,799	-3.5	1,295	1,112	-14.1
Peloponnisos	4,159	4,105	-1.3	1,292	1,145	-11.4
Attiki	26,559	26,639	0.3	7,153	6,704	-6.3
Voreio Aigaio	2,828	2,790	-1.3	801	802	0.1
Notio Aigaio	3,714	3,730	0.4	1,113	1,010	-9.3
Kriti	7,593	7,521	-0.9	2,034	1,974	-2.9
<b>TOTAL</b>	<b>98,568</b>	<b>97,452</b>	<b>-1.1</b>	<b>28,495</b>	<b>26,610</b>	<b>-6.6</b>

**Graph 4. Pupils enrolled by NUTS 2 region, school year 2017/18**



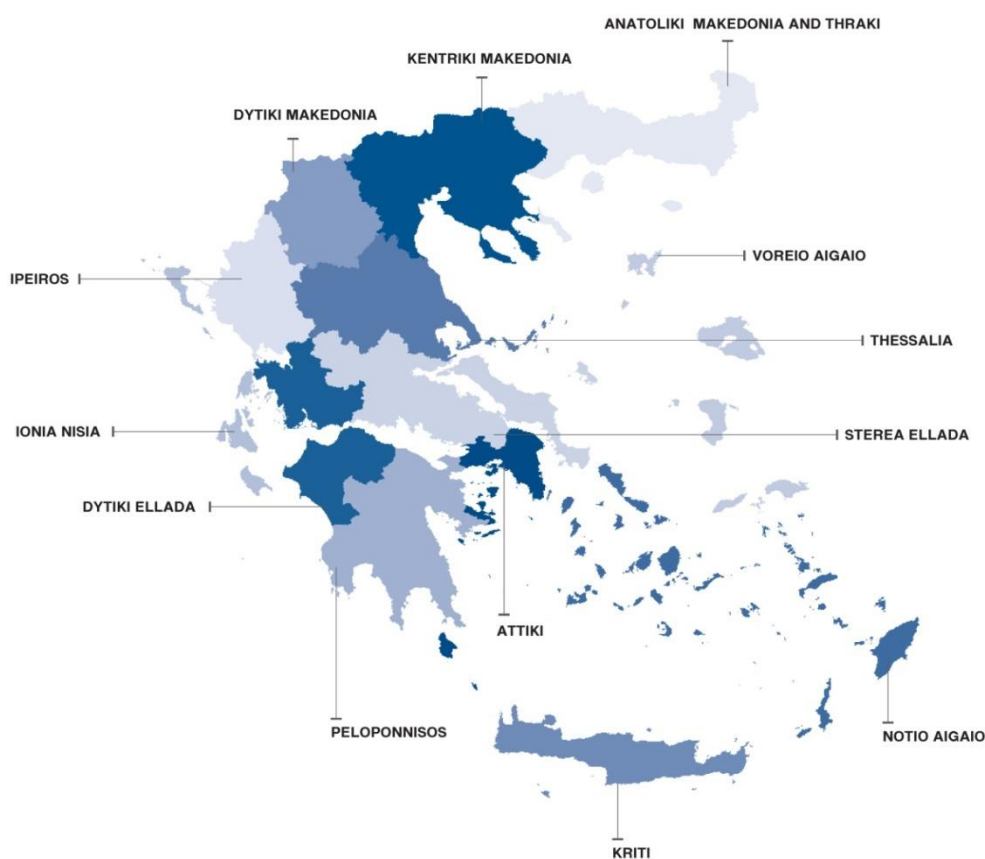
**Graph 5. Graduates by NUTS 2 region, school year 2017/18**



## EXPLANATORY NOTES

<b>Survey on Secondary Vocational Education</b>	Secondary Vocational Education includes: <ul style="list-style-type: none"><li>- the Vocational Upper Secondary Schools (EPAL)</li><li>- the Vocational Schools (EPAS)</li></ul> EPAL and EPAS are under the competency of the Ministry of Education and Religious Affairs, the Ministry of Rural Development and Food and the Ministry of Labour and Social Affairs. Since the school year 2014/2015, public EPAS of the Ministry of Education and Religious Affairs were abolished, while private EPAS under the supervision of the Ministry of Education and Religious Affairs are still under operation. The survey is conducted on a yearly basis, by all Member States of the European Union, aiming at collecting data on the number of pupils enrolled, the school units and the number of the teaching staff.
<b>Legal Frame</b>	The survey is conducted by virtue of Regulation 452/2008 of the European Parliament and the Council and implementing Regulation 912/2013 of the European Commission.
<b>Statistical Units</b>	The statistical units are the school units.
<b>Coverage</b>	Greece total.
<b>Geographical Classification</b>	The geographical classification is based on Nomenclature of Territorial Units for Statistics.

**Map of the 13 Regions (NUTS 2) of Greece**



- Dissemination of results** The data are posted on a yearly basis on the website of ELSTAT and are published in a relevant Press Release.
- Reference period** The data of the surveys refer to the end of school year 2017/2018.  
For comparability reasons, the data of the end of the previous school year 2016/2017 are also provided.
- Methodology and coverage** Until the school year 2013/2014, the survey on Secondary Vocational Education used to be a census, yearly survey and it was conducted by ELSTAT.  
From the school year 2014/2015 onwards, the data of the survey are collected as follows:
- As regards public school units of the Ministry of Education and Religious Affairs (EPAL), the data were extracted from the “live” e-platform “MySchool” of the Ministry of Education and Religious Affairs.
  - As regards public school units which are not under the competency of the Ministry of Education and Religious Affairs, data were collected via an annual census survey with the use of questionnaires.
  - As regards private school units, the data were collected via an annual census survey with the use of questionnaires.
- References** More information on the Survey on Secondary Vocational Education, such as tables with the survey’s results, samples of questionnaires, etc., can be found on the webpage of ELSTAT [www.statistics.gr](http://www.statistics.gr) and at the link: “Statistics”/ Population and Social Conditions / Education /Secondary Vocational Education”.