



## PRESS RELEASE

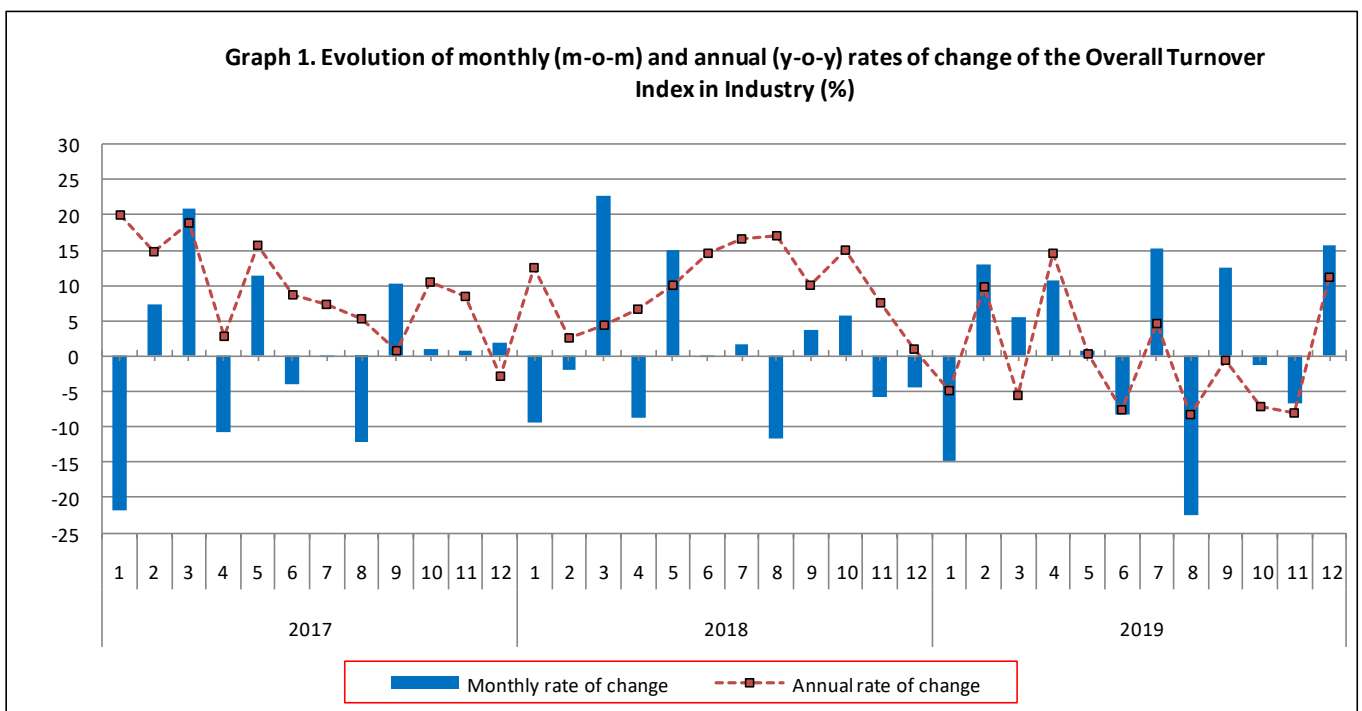
### TURNOVER INDEX IN INDUSTRY: December 2019, y-o-y increase of 11.3%

The Hellenic Statistical Authority announces the Turnover Index in Industry with base year 2015=100.0 for December 2019, on the basis of provisional data, which is as follows:

The Overall Turnover Index in Industry (both domestic and non-domestic market) in December 2019 recorded an increase of 11.3% compared with the corresponding index of December 2018. In December 2018, the corresponding annual change of the Overall Turnover Index in Industry increased by 1.1% (Table 1).

The Overall Turnover Index in Industry in December 2019, compared with November 2019, recorded an increase of 15.7% (Table 6).

The average Overall Turnover Index in Industry for the 12-month period from January 2019 to December 2019 decreased by 0.3%, compared with the corresponding index of the 12-month period from January 2018 to December 2018. In December 2018, the corresponding annual rate of change of the Overall Turnover Index in Industry for the previous 12-month periods increased by 9.8% (Table 13).



**Information for methodological issues:**

Division of Business Statistics  
Section of Manufacture-Construction Indices and Industrial Products  
Head of the Section : Diamantaki Aikaterini  
Tel: +30 213 135 2056  
Fax: +30 213 135 2506  
E-mail: [a.diamantaki@statistics.gr](mailto:a.diamantaki@statistics.gr)

**Information for data provision:**

Tel: +30 213 135 2022, 2308, 2310  
E-mail: [data.dissem@statistics.gr](mailto:data.dissem@statistics.gr)

## Evolution of the Overall Turnover Index in Industry in December 2019

### I. Annual changes of the Overall Turnover Index in Industry: December 2019/December 2018

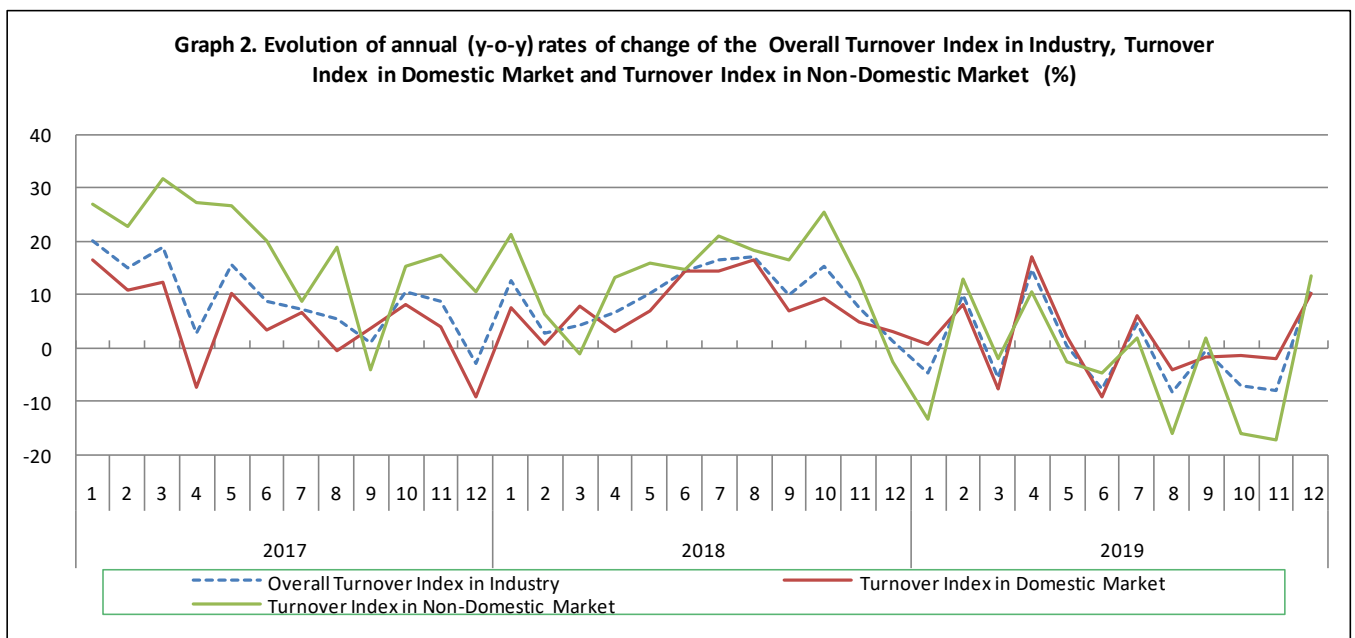
The 11.3% increase in the Overall Turnover Index in Industry in December 2019, compared with the corresponding index in December 2018, was due to the following:

#### 1. Changes in the sub-indices of the industrial sections (Table 1):

- The Turnover Index in Manufacturing increased by 11.5%. The increase was mainly the result of the annual changes of the sub-indices in the following 2-digit divisions: beverages, coke and refined petroleum products, chemicals and chemical products, basic pharmaceutical products and pharmaceutical preparations.
- The Turnover Index in Mining and quarrying decreased by 1.3%. The decrease was mainly the result of the annual change of the sub-index in the following 2-digit divisions: mining of coal and lignite - extraction of crude petroleum and natural gas - mining support service activities.

#### 2. Changes in the sub-indices in domestic and non-domestic markets:

- The Turnover Index in Industry in domestic market increased by 10.1% (Table 2).
- The Turnover Index in Industry in non-domestic market increased by 13.5% (Table 3).



### II. Annual changes of the Turnover Index in Industry in Domestic Market: December 2019/December 2018

The 10.1% increase of the Turnover Index in Industry in domestic market in December 2019, compared with December 2018, is due to the following annual changes in the sub-indices of the following industrial sections (Table 2):

- The Turnover Index in Manufacturing increased by 10.3%. The increase was mainly the result of the annual changes of the sub-indices in the following 2-digit divisions: beverages, coke and refined petroleum products, chemicals and chemical products, other non-metallic mineral products.
- The Turnover Index in Mining and quarrying decreased by 12.5%. The decrease was mainly the result of the annual changes of the sub-index in the following 2-digit divisions: mining of coal and lignite - extraction of crude petroleum and natural gas - mining support service activities.

### III. Annual changes of the Turnover Index in Industry in Non-Domestic Market: December 2019/December 2018

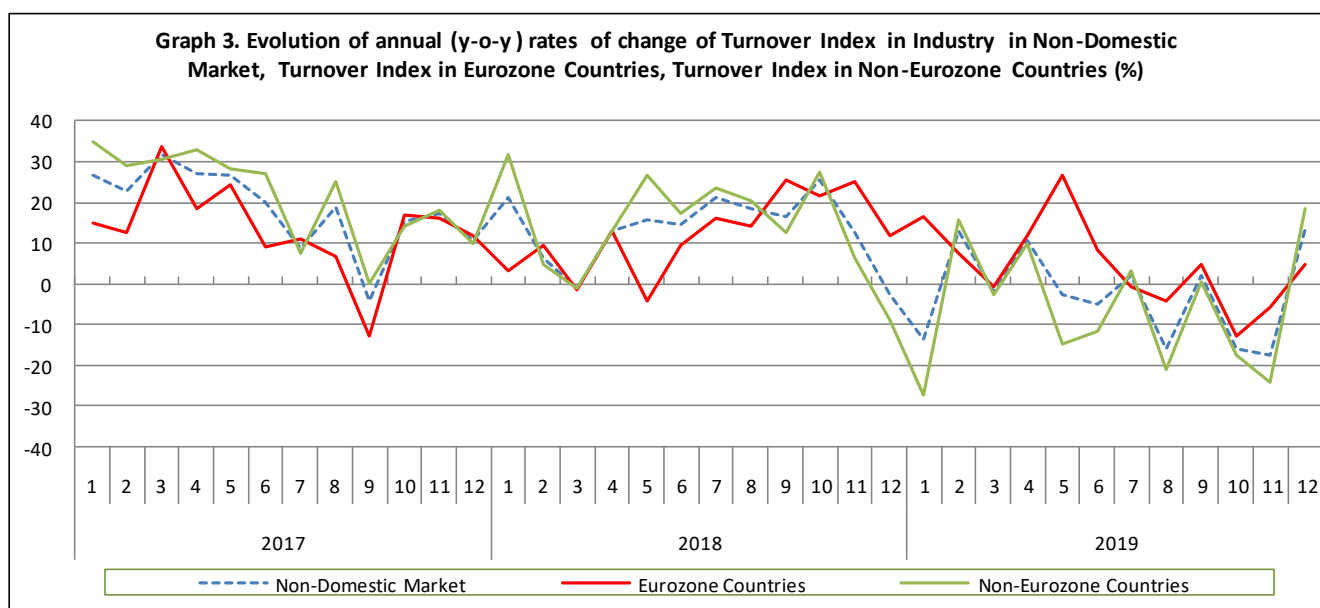
The 13.5% increase of the Turnover Index in Industry in Non-Domestic market in December 2019, compared with December 2018, was due to the following:

#### 1. Changes in the sub-indices of the industrial sections (Table 3):

- The Turnover Index in Mining and quarrying increased by 5.1%. The increase was mainly the result of the annual changes of the sub-indices in the following 2-digit divisions: mining of metal ores, other mining and quarrying products.
- The Turnover Index in Manufacturing increased by 13.8%. The increase was mainly the result of the annual changes of the sub-indices in the following 2-digit divisions: coke and refined petroleum products, basic pharmaceutical products and pharmaceutical preparations, fabricated metal products, except machinery and equipment, electrical equipment.

#### 2. Changes in the sub-indices in Eurozone and Non-Eurozone countries:

- The Turnover Index in Industry in Eurozone countries increased by 4.9% (Table 4).
- The Turnover Index in Industry in non-Eurozone countries increased by 18.3% (Table 5).



### IV. Monthly changes of the Overall Turnover Index in Industry: December 2019/ November 2019

The 15.7% increase of the Overall Turnover Index in Industry in December 2019, compared with the corresponding index in November 2019, was due to the following:

#### 1. Changes in the sub-indices of industrial sections (Table 6):

- The Turnover Index in Mining and quarrying increased by 28.1%.
- The Turnover Index in Manufacturing increased by 15.5%.

#### 2. Changes in the sub-indices in domestic and non-domestic market:

- The Turnover Index in Industry in domestic market increased by 13.6% (Table 7).
- The Turnover Index in Industry in non-domestic market increased by 19.6% (Table 8).

**Table 1. Annual rates of change of the Turnover Index in Industry: Total Market**
**Base year: 2015=100.0**

Code	Division	Weights	December			Rate of change (%)	
			2019*	2018	2017	2019/2018	2018/2017
<b>OVERALL INDEX</b>			<b>123.00</b>	<b>110.54</b>	<b>109.35</b>	<b>11.3</b>	<b>1.1</b>
<b>B</b>	<b>MINING AND QUARRYING</b>	<b>100.00</b>	<b>130.27</b>	<b>132.04</b>	<b>126.50</b>	<b>-1.3</b>	<b>4.4</b>
<b>05-06-09</b>	Mining of coal and lignite - Extraction of crude petroleum and natural gas - Mining support service activities	21.19	128.96	173.56	196.98	-25.7	-11.9
<b>07</b>	Mining of metal ores	17.56	202.77	167.02	154.15	21.4	8.3
<b>08</b>	Other mining and quarrying products	61.25	109.93	107.64	94.19	2.1	14.3
<b>C</b>	<b>MANUFACTURING</b>	<b>100.00</b>	<b>122.90</b>	<b>110.25</b>	<b>109.11</b>	<b>11.5</b>	<b>1.0</b>
<b>10</b>	Food	23.39	99.71	90.17	94.22	10.6	-4.3
<b>11</b>	Beverages	3.57	88.79	86.97	85.54	2.1	1.7
<b>12</b>	Tobacco products	1.19	115.25	109.30	101.30	5.4	7.9
<b>13</b>	Textiles	1.28	89.76	77.35	82.63	16.0	-6.4
<b>14</b>	Wearing apparel	1.80	103.22	98.29	107.47	5.0	-8.5
<b>15</b>	Leather and related products	0.34	89.03	85.10	108.27	4.6	-21.4
<b>16</b>	Wood and products of wood and cork, except furniture	0.72	126.08	113.58	111.43	11.0	1.9
<b>17</b>	Paper and paper products	2.44	108.35	98.70	103.96	9.8	-5.1
<b>18</b>	Printing and reproduction of recorded products	1.17	101.07	103.63	105.84	-2.5	-2.1
<b>19</b>	Coke and refined petroleum products	28.73	149.12	121.81	123.99	22.4	-1.8
<b>20</b>	Chemicals and chemical products	4.43	101.34	90.10	84.67	12.5	6.4
<b>21</b>	Basic pharmaceutical products and pharmaceutical preparations	3.67	180.69	153.20	131.36	17.9	16.6
<b>22</b>	Rubber and plastic products	3.47	89.94	80.90	85.54	11.2	-5.4
<b>23</b>	Other non-metallic mineral products	3.31	114.57	99.41	97.32	15.2	2.2
<b>24</b>	Basic metals	7.19	91.78	120.94	109.61	-24.1	10.3
<b>25</b>	Fabricated metal products, except machinery and equipment	4.51	134.33	121.25	118.02	10.8	2.7
<b>26</b>	Computers, electronic and optical products	0.78	231.62	155.64	171.06	48.8	-9.0
<b>27</b>	Electrical equipment	2.65	159.12	164.27	107.85	-3.1	52.3
<b>28</b>	Machinery and equipment n.e.c.	1.56	147.96	130.85	136.60	13.1	-4.2
<b>29</b>	Motor vehicles, trailers and semi-trailers	0.23	185.40	179.64	136.61	3.2	31.5
<b>30</b>	Other transport equipment	0.52	77.15	109.90	124.26	-29.8	-11.6
<b>31</b>	Furniture	0.97	132.35	129.05	139.29	2.6	-7.4
<b>32</b>	Other manufacturing	0.66	117.50	103.41	103.36	13.6	0.0
<b>33</b>	Repair and installation of machinery and equipment	1.42	158.09	131.85	139.31	19.9	-5.4
<b>MAIN INDUSTRIAL GROUPINGS</b>							
<b>1</b>	Energy	28.57	149.24	122.25	124.67	22.1	-1.9
<b>2</b>	Intermediate goods	28.29	105.74	107.28	100.18	-1.4	7.1
<b>3</b>	Capital goods	7.00	161.04	139.85	138.70	15.2	0.8
<b>4</b>	Consumer Durables	1.86	121.64	116.83	124.04	4.1	-5.8
<b>5</b>	Consumer Non-Durables	34.28	107.67	97.15	97.35	10.8	-0.2

\* Provisional data

Note: The indices and the percentage changes are rounded up to two and one decimal digits, respectively, when published.

**Table 2. Annual rates of change of the Turnover Index in Industry: Domestic Market**

Base year: 2015=100.0

Code	Division	Weights	December			Rate of change (%)	
			2019*	2018	2017	2019/2018	2018/2017
<b>OVERALL INDEX</b>			<b>119.12</b>	<b>108.24</b>	<b>104.92</b>	<b>10.1</b>	<b>3.2</b>
<b>B</b>	<b>MINING AND QUARRYING</b>	<b>100.00</b>	<b>74.94</b>	<b>85.60</b>	<b>88.52</b>	<b>-12.5</b>	<b>-3.3</b>
05-06-09	Mining of coal and lignite - Extraction of crude petroleum and natural gas - Mining support service activities	31.66	47.28	77.86	82.94	-39.3	-6.1
07	Mining of metal ores	12.83	91.62	73.96	82.45	23.9	-10.3
08	Other mining and quarrying products	55.50	86.86	92.70	93.11	-6.3	-0.4
<b>C</b>	<b>MANUFACTURING</b>	<b>100.00</b>	<b>119.63</b>	<b>108.50</b>	<b>105.11</b>	<b>10.3</b>	<b>3.2</b>
10	Food	28.50	96.41	86.42	91.20	11.6	-5.2
11	Beverages	4.86	88.35	85.68	83.90	3.1	2.1
12	Tobacco products	0.51	156.54	124.22	96.91	26.0	28.2
13	Textiles	1.11	88.14	80.94	88.26	8.9	-8.3
14	Wearing apparel	1.77	110.95	106.96	114.23	3.7	-6.4
15	Leather and related products	0.41	80.86	75.77	83.98	6.7	-9.8
16	Wood and products of wood and cork, except furniture	0.96	125.39	114.32	111.03	9.7	3.0
17	Paper and paper products	3.12	106.45	96.21	102.02	10.6	-5.7
18	Printing and reproduction of recorded products	1.63	92.95	103.09	102.74	-9.8	0.3
19	Coke and refined petroleum products	24.90	143.80	121.84	117.92	18.0	3.3
20	Chemicals and chemical products	4.90	103.43	92.29	83.61	12.1	10.4
21	Basic pharmaceutical products and pharmaceutical preparations	3.85	140.41	129.83	108.67	8.2	19.5
22	Rubber and plastic products	3.31	85.48	75.78	81.25	12.8	-6.7
23	Other non-metallic mineral products	3.31	117.41	92.74	95.82	26.6	-3.2
24	Basic metals	3.49	106.89	132.47	119.05	-19.3	11.3
25	Fabricated metal products, except machinery and equipment	4.25	163.69	155.17	144.42	5.5	7.4
26	Computers, electronic and optical products	0.40	160.26	133.87	239.66	19.7	-44.1
27	Electrical equipment	2.24	189.65	215.82	97.75	-12.1	120.8
28	Machinery and equipment n.e.c.	1.46	157.54	127.85	130.90	23.2	-2.3
29	Motor vehicles, trailers and semi-trailers	0.27	211.31	201.73	146.56	4.7	37.6
30	Other transport equipment	0.58	63.96	95.80	84.88	-33.2	12.9
31	Furniture	1.35	125.06	120.42	128.36	3.8	-6.2
32	Other manufacturing	0.88	116.08	99.90	101.68	16.2	-1.8
33	Repair and installation of machinery and equipment	1.92	166.29	138.91	150.34	19.7	-7.6
<b>MAIN INDUSTRIAL GROUPINGS</b>							
1	Energy	24.89	142.93	121.07	117.31	18.1	3.2
2	Intermediate goods	25.73	110.80	107.72	98.75	2.9	9.1
3	Capital goods	7.19	175.14	159.07	153.23	10.1	3.8
4	Consumer Durables	2.31	108.60	102.64	113.67	5.8	-9.7
5	Consumer Non-Durables	39.88	100.15	91.72	91.96	9.2	-0.3

\* Provisional data

Note: The indices and the percentage changes are rounded up to two and one decimal digits, respectively, when published.

**Table 3. Annual rates of change of the Turnover Index in Industry: Non-Domestic Market**

Base year: 2015=100.0

Code	Division	Weights	December			Rate of change (%)	
			2019*	2018	2017	2019/2018	2018/2017
<b>OVERALL INDEX</b>			<b>130.63</b>	<b>115.08</b>	<b>118.06</b>	<b>13.5</b>	<b>-2.5</b>
<b>B</b>	<b>MINING AND QUARRYING</b>	<b>100.00</b>	<b>202.47</b>	<b>192.65</b>	<b>176.07</b>	<b>5.1</b>	<b>9.4</b>
05-06-09	Mining of coal and lignite - Extraction of crude petroleum and natural gas - Mining support service activities	7.53	577.34	698.93	822.99	-17.4	-15.1
07	Mining of metal ores	23.74	281.20	232.68	204.74	20.9	13.6
08	Other mining and quarrying products	68.74	134.24	123.39	95.33	8.8	29.4
<b>C</b>		<b>100.00</b>	<b>129.37</b>	<b>113.72</b>	<b>117.04</b>	<b>13.8</b>	<b>-2.8</b>
<b>MANUFACTURING</b>							
10	Food	13.27	113.76	106.14	107.06	7.2	-0.9
11	Beverages	1.01	93.03	99.24	101.18	-6.3	-1.9
12	Tobacco products	2.53	98.60	103.28	103.06	-4.5	0.2
13	Textiles	1.61	91.98	72.42	74.90	27.0	-3.3
14	Wearing apparel	1.86	88.64	81.95	94.74	8.2	-13.5
15	Leather and related products	0.19	124.18	125.19	212.68	-0.8	-41.1
16	Wood and products of wood and cork, except furniture	0.24	131.54	107.71	114.66	22.1	-6.1
17	Paper and paper products	1.11	118.90	112.56	114.75	5.6	-1.9
18	Printing and reproduction of recorded products	0.26	202.22	110.34	144.48	83.3	-23.6
19	Coke and refined petroleum products	36.32	156.35	121.77	132.24	28.4	-7.9
20	Chemicals and chemical products	3.50	95.56	84.04	87.59	13.7	-4.0
21	Basic pharmaceutical products and pharmaceutical preparations	3.30	273.75	207.21	183.79	32.1	12.7
22	Rubber and plastic products	3.79	97.66	89.77	92.98	8.8	-3.5
23	Other non-metallic mineral products	3.31	108.94	112.64	100.28	-3.3	12.3
24	Basic metals	14.54	84.60	115.46	105.12	-26.7	9.8
25	Fabricated metal products, except machinery and equipment	5.03	85.16	64.42	73.79	32.2	-12.7
26	Computers, electronic and optical products	1.52	268.76	166.98	135.37	61.0	23.4
27	Electrical equipment	3.44	119.67	97.66	120.91	22.5	-19.2
28	Machinery and equipment n.e.c.	1.76	132.21	135.79	145.97	-2.6	-7.0
29	Motor vehicles, trailers and semi-trailers	0.14	84.52	93.62	97.85	-9.7	-4.3
30	Other transport equipment	0.40	114.73	150.08	236.47	-23.6	-36.5
31	Furniture	0.21	225.25	238.91	278.51	-5.7	-14.2
32	Other manufacturing	0.22	128.51	130.61	116.40	-1.6	12.2
33	Repair and installation of machinery and equipment	0.43	86.07	69.93	42.47	23.1	64.7
<b>MAIN INDUSTRIAL GROUPINGS</b>							
1	Energy	35.82	157.87	123.86	134.74	27.5	-8.1
2	Intermediate goods	33.33	98.05	106.61	102.35	-8.0	4.2
3	Capital goods	6.62	130.87	98.75	107.63	32.5	-8.3
4	Consumer Durables	0.98	182.34	182.90	172.34	-0.3	6.1
5	Consumer Non-Durables	23.25	133.10	115.47	115.56	15.3	-0.1

\* Provisional data

Note: The indices and the percentage changes are rounded up to two and one decimal digits, respectively, when published.

**Table 4. Annual rates of change of the Turnover Index in Industry: Eurozone Countries**

Base year: 2015=100.0

Code	Sections and main groupings	December			Rate of change (%)	
		2019*	2018	2017	2019/2018	2018/2017
<b>OVERALL INDEX</b>		<b>123.89</b>	<b>118.10</b>	<b>105.46</b>	<b>4.9</b>	<b>12.0</b>
<b>INDUSTRIAL SECTIONS</b>						
<b>B</b>	MINING AND QUARRYING	237.84	255.53	254.04	-6.9	0.6
<b>C</b>	MANUFACTURING	121.61	115.35	102.48	5.4	12.6
<b>MAIN INDUSTRIAL GROUPINGS</b>						
<b>1</b>	Energy	128.73	161.23	112.32	-20.2	43.5
<b>2</b>	Intermediate goods	109.80	90.80	102.34	20.9	-11.3
<b>3</b>	Capital goods	108.14	119.48	102.49	-9.5	16.6
<b>4</b>	Consumer Durables	223.96	161.96	142.08	38.3	14.0
<b>5</b>	Consumer Non-Durables	135.50	117.57	103.41	15.3	13.7

\* Provisional data

**Table 5. Annual rates of change of the Turnover Index in Industry: Non-Eurozone Countries**

Base year: 2015=100.0

Code	Sections and main groupings	December			Rate of change (%)	
		2019*	2018	2017	2019/2018	2018/2017
<b>OVERALL INDEX</b>		<b>134.21</b>	<b>113.47</b>	<b>124.75</b>	<b>18.3</b>	<b>-9.0</b>
<b>INDUSTRIAL SECTIONS</b>						
<b>B</b>	MINING AND QUARRYING	179.26	151.38	124.89	18.4	21.2
<b>C</b>	MANUFACTURING	133.48	112.85	124.75	18.3	-9.5
<b>MAIN INDUSTRIAL GROUPINGS</b>						
<b>1</b>	Energy	166.26	113.10	141.19	47.0	-19.9
<b>2</b>	Intermediate goods	90.40	116.92	102.36	-22.7	14.2
<b>3</b>	Capital goods	138.58	91.72	109.37	51.1	-16.1
<b>4</b>	Consumer Durables	153.60	197.37	193.23	-22.2	2.1
<b>5</b>	Consumer Non-Durables	130.76	113.44	127.37	15.3	-10.9

\* Provisional data

Note: The indices and the percentage changes are rounded up to two and one decimal digits, respectively, when published.

**Table 6. Monthly rate of change of the Turnover Index in Industry: Total Market**

Base year: 2015=100.0

Code	Sections and main groupings	December 2019*	November 2019*	Rate of change (%) Dec. 2019/Nov. 2019
<b>OVERALL INDEX</b>		<b>123.00</b>	<b>106.33</b>	<b>15.7</b>
<b>INDUSTRIAL SECTIONS</b>				
B	MINING AND QUARRYING	130.27	101.69	28.1
C	MANUFACTURING	122.90	106.40	15.5
<b>MAIN INDUSTRIAL GROUPINGS</b>				
1	Energy	149.24	94.79	57.4
2	Intermediate goods	105.74	111.44	-5.1
3	Capital goods	161.04	114.12	41.1
4	Consumer Durables	121.64	131.03	-7.2
5	Consumer Non-Durables	107.67	108.81	-1.0

**Table 7. Monthly rate of change of the Turnover Index in Industry: Domestic Market**

Base year: 2015=100.0

Code	Sections and main groupings	December 2019*	November 2019*	Rate of change (%) Dec. 2019/Nov. 2019
<b>OVERALL INDEX</b>		<b>119.12</b>	<b>104.86</b>	<b>13.6</b>
<b>INDUSTRIAL SECTIONS</b>				
B	MINING AND QUARRYING	74.94	71.86	4.3
C	MANUFACTURING	119.63	105.24	13.7
<b>MAIN INDUSTRIAL GROUPINGS</b>				
1	Energy	142.93	95.67	49.4
2	Intermediate goods	110.80	111.39	-0.5
3	Capital goods	175.14	120.07	45.9
4	Consumer Durables	108.60	115.42	-5.9
5	Consumer Non-Durables	100.15	103.02	-2.8

**Table 8. Monthly rate of change of the Turnover Index in Industry: Non-Domestic Market**

Base year: 2015=100.0

Code	Sections and main groupings	December 2019*	November 2019*	Rate of change (%) Dec. 2019/Nov. 2019
<b>OVERALL INDEX</b>		<b>130.63</b>	<b>109.24</b>	<b>19.6</b>
<b>INDUSTRIAL SECTIONS</b>				
B	MINING AND QUARRYING	202.47	140.61	44.0
C	MANUFACTURING	129.37	108.69	19.0
<b>MAIN INDUSTRIAL GROUPINGS</b>				
1	Energy	157.87	93.59	68.7
2	Intermediate goods	98.05	111.51	-12.1
3	Capital goods	130.87	101.40	29.1
4	Consumer Durables	182.34	203.67	-10.5
5	Consumer Non-Durables	133.10	128.37	3.7

\* Provisional data

Note: The indices and the percentage changes are rounded up to two and one decimal digits, respectively, when published.



**Table 9. Monthly rate of change of the Turnover Index in Industry: Eurozone Countries**

Base year: 2015=100.0

Code	Sections and main groupings	December 2019*	November 2019*	Rate of change (%) Dec. 2019/Nov. 2019
<b>OVERALL INDEX</b>		<b>123.89</b>	<b>129.95</b>	<b>-4.7</b>
<b>INDUSTRIAL SECTIONS</b>				
<b>B</b>	MINING AND QUARRYING	237.84	148.18	60.5
<b>C</b>	MANUFACTURING	121.61	129.59	-6.2
<b>MAIN INDUSTRIAL GROUPINGS</b>				
<b>1</b>	Energy	128.73	120.65	6.7
<b>2</b>	Intermediate goods	109.80	129.25	-15.1
<b>3</b>	Capital goods	108.14	126.66	-14.6
<b>4</b>	Consumer Durables	223.96	375.39	-40.3
<b>5</b>	Consumer Non-Durables	135.50	129.17	4.9

\* Provisional data

**Table 10. Monthly rate of change of the Turnover Index in Industry: Non-Eurozone Countries**

Base year: 2015=100.0

Code	Sections and main groupings	December 2019*	November 2019*	Rate of change (%) Dec. 2019/Nov. 2019
<b>OVERALL INDEX</b>		<b>134.21</b>	<b>98.23</b>	<b>36.6</b>
<b>INDUSTRIAL SECTIONS</b>				
<b>B</b>	MINING AND QUARRYING	179.26	135.64	32.2
<b>C</b>	MANUFACTURING	133.48	97.63	36.7
<b>MAIN INDUSTRIAL GROUPINGS</b>				
<b>1</b>	Energy	166.26	85.79	93.8
<b>2</b>	Intermediate goods	90.40	99.94	-9.5
<b>3</b>	Capital goods	138.58	92.84	49.3
<b>4</b>	Consumer Durables	153.60	85.09	80.5
<b>5</b>	Consumer Non-Durables	130.76	127.59	2.5

\* Provisional data

Note: The indices and the percentage changes are rounded up to two and one decimal digits, respectively, when published.

**Table 11. Evolution of the Turnover Index in Industry (y-o-y changes): Total Market**

Base year: 2015=100.0

Year and month	Overall Index (Total Market)		Turnover Index in Industry in Domestic Market		Turnover Index in Industry in Non-Domestic Market	
	Index	Annual rate of change (%)	Index	Annual rate of change (%)	Index	Annual rate of change (%)
<b>2018:</b> 12	110.54	1.1	108.24	3.2	115.08	-2.5
<b>2019*:</b> 1	94.22	-4.8	92.42	0.6	97.77	-13.5
2	106.47	9.8	99.39	8.0	120.40	12.8
3	112.33	-5.7	106.42	-7.7	123.95	-2.0
4	124.46	14.6	116.85	17.2	139.44	10.6
5	125.41	0.4	119.60	2.2	136.84	-2.7
6	115.15	-7.6	111.42	-9.1	122.49	-4.9
7	132.59	4.6	131.80	6.1	134.15	1.9
8	102.70	-8.2	106.25	-4.1	95.70	-16.1
9	115.50	-0.5	110.47	-1.8	125.42	1.9
10	113.98	-7.2	111.51	-1.5	118.84	-16.1
11	106.33	-8.0	104.86	-2.1	109.24	-17.4
12	123.00	11.3	119.12	10.1	130.63	13.5

\*Provisional data

**Table 12. Evolution of the Turnover Index in Industry (y-o-y changes): Non-Domestic Market**

Base year: 2015=100.0

Year and month	Overall Index (Non-Domestic Market)		Turnover Index in Industry in Eurozone Countries		Turnover Index in Industry in Non-Eurozone Countries	
	Index	Annual rate of change (%)	Index	Annual rate of change (%)	Index	Annual rate of change (%)
<b>2018:</b> 12	115.08	-2.5	118.10	12.0	113.47	-9.0
<b>2019*:</b> 1	97.77	-13.5	118.83	16.5	86.57	-27.2
2	120.40	12.8	117.27	7.6	122.06	15.7
3	123.95	-2.0	128.45	-0.8	121.56	-2.6
4	139.44	10.6	151.15	11.7	133.22	9.9
5	136.84	-2.7	150.23	26.8	129.73	-14.8
6	122.49	-4.9	137.25	8.2	114.65	-11.7
7	134.15	1.9	128.81	-0.9	136.99	3.4
8	95.70	-16.1	92.27	-4.2	97.53	-21.0
9	125.42	1.9	121.19	4.6	127.67	0.6
10	118.84	-16.1	114.83	-12.9	120.98	-17.6
11	109.24	-17.4	129.95	-5.7	98.23	-24.0
12	130.63	13.5	123.89	4.9	134.21	18.3

\*Provisional data

Note: The indices and the percentage changes are rounded up to two and one decimal digits, respectively, when published.

**Table 13. Average indices and rates of change (%) of the 12-month periods of Turnover Index in Industry: Total Market**  
**Base year: 2015=100.0**

Code	Division	Average Indices of 12-month periods			Rate of change (%) 2019/2018	Rate of change (%) 2018/2017
		Jan. 2019- Dec. 2019*	Jan. 2018- Dec. 2018	Jan. 2017- Dec. 2017		
	<b>OVERALL INDEX</b>	<b>114.34</b>	<b>114.74</b>	<b>104.50</b>	<b>-0.3</b>	<b>9.8</b>
<b>B</b>	<b>MINING AND QUARRYING</b>	<b>106.55</b>	<b>111.10</b>	<b>102.60</b>	<b>-4.1</b>	<b>8.3</b>
<b>05-06-09</b>	Mining of coal and lignite - Extraction of crude petroleum and natural gas - Mining support service activities	83.02	101.64	82.77	-18.3	22.8
<b>07</b>	Mining of metal ores	155.07	145.31	116.23	6.7	25.0
<b>08</b>	Other mining and quarrying products	100.77	104.56	105.56	-3.6	-0.9
<b>C</b>	<b>MANUFACTURING</b>	<b>114.45</b>	<b>114.79</b>	<b>104.53</b>	<b>-0.3</b>	<b>9.8</b>
<b>10</b>	Food	104.54	101.38	100.61	3.1	0.8
<b>11</b>	Beverages	117.10	114.89	110.01	1.9	4.4
<b>12</b>	Tobacco products	128.41	111.86	103.98	14.8	7.6
<b>13</b>	Textiles	108.68	107.08	106.48	1.5	0.6
<b>14</b>	Wearing apparel	94.99	96.89	97.67	-2.0	-0.8
<b>15</b>	Leather and related products	89.47	92.20	101.85	-3.0	-9.5
<b>16</b>	Wood and products of wood and cork, except furniture	105.46	104.52	102.66	0.9	1.8
<b>17</b>	Paper and paper products	114.76	112.08	105.63	2.4	6.1
<b>18</b>	Printing and reproduction of recorded products	96.52	96.22	94.57	0.3	1.7
<b>19</b>	Coke and refined petroleum products	120.22	130.24	107.05	-7.7	21.7
<b>20</b>	Chemicals and chemical products	117.42	111.34	104.98	5.5	6.1
<b>21</b>	Basic pharmaceutical products and pharmaceutical preparations	142.03	117.99	104.05	20.4	13.4
<b>22</b>	Rubber and plastic products	107.01	102.80	101.05	4.1	1.7
<b>23</b>	Other non-metallic mineral products	111.60	107.57	106.90	3.7	0.6
<b>24</b>	Basic metals	125.76	137.17	119.58	-8.3	14.7
<b>25</b>	Fabricated metal products, except machinery and equipment	103.59	100.22	96.04	3.4	4.3
<b>26</b>	Computers, electronic and optical products	161.20	127.46	107.41	26.5	18.7
<b>27</b>	Electrical equipment	128.23	116.78	107.02	9.8	9.1
<b>28</b>	Machinery and equipment n.e.c.	109.03	106.30	100.63	2.6	5.6
<b>29</b>	Motor vehicles, trailers and semi-trailers	110.87	94.20	88.96	17.7	5.9
<b>30</b>	Other transport equipment	60.96	69.82	70.62	-12.7	-1.1
<b>31</b>	Furniture	114.79	115.02	105.20	-0.2	9.3
<b>32</b>	Other manufacturing	105.82	100.12	99.77	5.7	0.4
<b>33</b>	Repair and installation of machinery and equipment	97.35	91.78	87.64	6.1	4.7
	<b>MAIN INDUSTRIAL GROUPINGS</b>					
<b>1</b>	Energy	120.03	130.05	106.84	-7.7	21.7
<b>2</b>	Intermediate goods	114.96	114.74	107.63	0.2	6.6
<b>3</b>	Capital goods	106.77	99.51	92.74	7.3	7.3
<b>4</b>	Consumer Durables	107.64	108.08	100.95	-0.4	7.1
<b>5</b>	Consumer Non-Durables	111.00	105.45	102.57	5.3	2.8

\*Provisional data

Note: The indices and the percentage changes are rounded up to two and one decimal digits, respectively, when published.

## METHODOLOGICAL NOTES

<b>Generally</b>	The Industrial Turnover Index is an indicator of an enterprise's business cycle showing the monthly evolution of the market of goods and services in industry. The first compilation of the Turnover Index was completed by the Hellenic Statistical Authority in 2006, with base year 2000=100.0 and is compiled from 2000 onwards.
<b>Purpose of the index</b>	The purpose of this index is to measure the monthly activity of the industrial sector in terms of value. Turnover comprises the totals invoiced by the observation units during the reference period and corresponds to the market sales of goods or services supplied to third parties. The purposes and the characteristics of the Turnover Index apply, as well, to the indices for the distinction between domestic and non-domestic turnover.
<b>Legal Framework</b>	The compilation and publication of the Turnover Index is based on the framework implementation of Council Regulation (EC) No 1165/98 concerning short-term statistics (STS-R), as well as Regulation (EC) No 1158/05 of the European Parliament and of the Council amending Council Regulation (EC) No 1165/98. Furthermore, this index is governed by Regulation (EC) No 1893/2006 of the European Parliament and of the Council, by Commission Regulation (EC) No 656/2007 and by Regulation (EC) No 451/2008 of the Council.
<b>Reference period</b>	Month.
<b>Base year</b>	2015=100.0.
<b>Revision</b>	The latest revision of the Turnover Index in Industry (base year 2015=100.0) took place in the framework of Council Regulation (EC) No 1165/98 concerning short-term statistics. In accordance with this regulation the index is revised every five years, in years ending in 0 or 5.
<b>Statistical classifications</b>	At the level of classes of economic activities, the statistical classification of economic activities NACE Rev. 2 of EU was used (Regulation No 1893/2006), while at the level of main industrial groupings, the allocation of two-digit and three-digit NACE Rev. 2 headings to categories of aggregate classification was used, in accordance with Commission Regulation No 656/2007.
<b>Geographical coverage</b>	The index covers the whole Country.
<b>Coverage of economic activities</b>	The Turnover Index in Industry is compiled for all activities listed in Sections B (mining and quarrying) and C (manufacturing) of the NACE Rev. 2 statistical classification.
<b>Computation of the Index</b>	The Turnover Index in Industry is a fixed base index. This index is calculated at a first stage at the four-digit level of economic activity and subsequently, with the implementation of appropriate weighting coefficients, the index is calculated at higher levels (three-level and two-level of economic activity) as well as at the level of Main Industrial Groupings (MIGs).
<b>Publication of data</b>	The Turnover Index in Industry (2015=100.0) is released since August 2019 with June 2019 as first reference month. Data with base year 2015=100.0 are available from January 2000 onwards.
<b>References</b>	More information about the methodology concerning the compilation and calculation of the index and for the time series is available on the website of the Hellenic Statistical Authority (ELSTAT) ( <a href="http://www.statistics.gr/en/statistics/-/publication/DKT24/">http://www.statistics.gr/en/statistics/-/publication/DKT24/</a> ).