



## PRESS RELEASE

### SURVEYS ON SECONDARY GENERAL EDUCATION (LOWER AND UPPER SECONDARY SCHOOLS) END OF SCHOOL YEAR 2016/2017

The Hellenic Statistical Authority (ELSTAT) announces data on Secondary General Education (lower and upper secondary schools) deriving from the relevant surveys for the end of the school year 2016/2017. In the first part of this press release, data on lower and upper secondary education schools are presented and the second part includes data on the Ecclesiastical Secondary Education Schools and Second Chance Schools, as branches of the Secondary General Education.

#### **GENERAL SECONDARY EDUCATION (LOWER AND UPPER SECONDARY SCHOOLS)**

The data collected from the surveys on Secondary Education, pertaining to lower and upper secondary education schools can be summarized as follows:

- a) In lower secondary schools, **school units** in the school year 2016/2017 amounted to 1,823 in comparison to 1,819 in 2015/2016. In upper secondary schools, **school units** in the school year 2016/2017 amounted to 1,348 compared with 1,333 in 2015/16 (Tables 2 and 4, respectively);
- b) **Teaching staff** in the school year 2016/2017 compared with 2015/2016 decreased from 38,929 to 38,411 in lower secondary schools and increased from 23,805 to 23,822 in upper secondary schools (Tables 2 and 4, respectively);
- c) **The number of pupils enrolled** in the school year 2016/2017, compared with the corresponding number in the school year 2015/2016, increased from 311,236 to 313,130 in lower secondary schools and from 240,852 to 244,386 in upper secondary schools (Tables 3 and 5, respectively);
- d) **The number of graduates** in the school year 2016/2017, compared with the corresponding number in the school year 2015/2016, increased from 99,820 to 100,980 in lower secondary schools and from 75,995 to 76,900 in upper secondary schools (Tables 3 and 5, respectively);
- e) **The ratio of teaching staff to pupils**, in the school year 2016/2017, was 1 teacher for 8.2 pupils in lower secondary schools and 1 teacher for 10.3 pupils in upper secondary schools, while for the school year 2015/2016 the corresponding ratio was 1 to 8.0 and 1 to 10.1, respectively (Tables 2,3,4 and 5);
- f) The **Region of Attiki** accounted for the largest share of pupils enrolled in Secondary Education in Greece, with 34.3% in lower secondary schools and 35.7% in upper secondary schools (Tables 2 and 4 respectively and Graphs 2 and 3 respectively).

Information:

Social Statistics Division

Education Statistics Section

Evdokia Oikonomou, Eleni Spiliopoulou

Tel: +30 213 135 2134, +30 213 135 2774

Fax: +30 213 135 2780

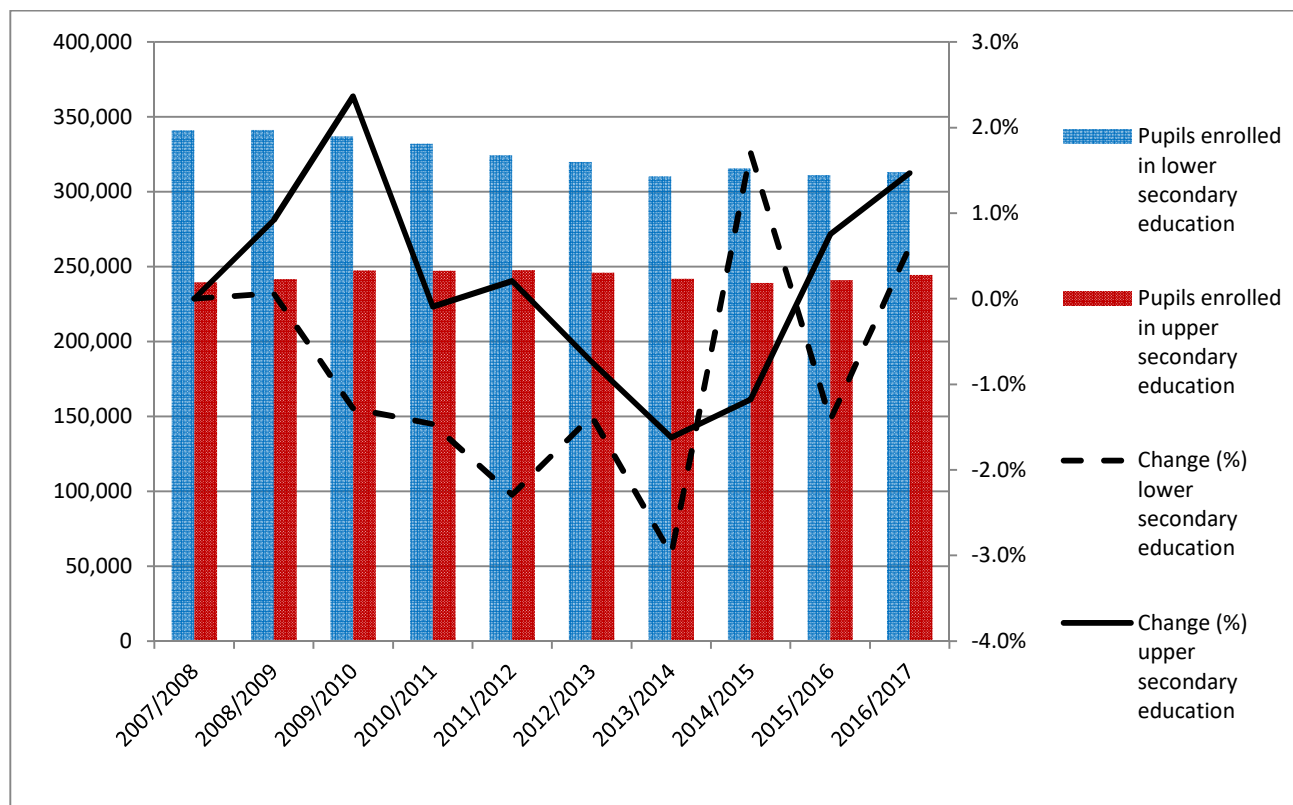
e-mail: [evd.oikonomou@statistics.gr](mailto:evd.oikonomou@statistics.gr), [e.spiliopoulou@statistics.gr](mailto:e.spiliopoulou@statistics.gr)

More specifically, Table 1 and Graph 1 depict the evolution of pupil population in lower and upper secondary education during the period 2007/2008 - 2016/2017.

**Table 1**  
**Evolution of pupil population in Secondary Education 2007/08 – 2016/17**

School year	Pupils enrolled <sup>1</sup>	
	Lower secondary education schools	Upper secondary education schools
2007/2008	341,107	239,532
2008/2009	341,315	241,726
2009/2010	336,938	247,441
2010/2011	332,005	247,209
2011/2012	324,402	247,717
2012/2013	319,950	245,892
2013/2014	310,389	241,905
2014/2015	315,702	239,055
2015/2016	311,236	240,852
2016/2017	313,130	244,386

**Graph 1**  
**Evolution of pupil population in Secondary Education 2007/08 – 2016/17**



<sup>1</sup> Ecclesiastical secondary education schools and Second Chance schools are not included.

## A. LOWER SECONDARY SCHOOLS

Tables 2 and 3 present data on the number of school units, teaching staff, pupils enrolled and graduates (Ecclesiastical Schools and Second Chance Schools are not included).

**Table 2. School units and teaching staff <sup>2</sup> (Lower secondary education)**

<i>By Type of school unit</i>						
School units	Number of school units			Teaching staff		
	2015/16	2016/17	Change (%)	2015/16	2016/17	Change (%)
<b>Public</b>	1,720	1,725	0.3	36,828	36,237	-1.6
<b>Private</b>	99	98	-1.0	2,101	2,174	3.5
<b>TOTAL</b>	<b>1,819</b>	<b>1,823</b>	<b>0.2</b>	<b>38,929</b>	<b>38,411</b>	<b>-1.3</b>
<i>By Region</i>						
Region (NUTS 2)	Number of school units			Teaching staff		
	2015/16	2016/17	Change (%)	2015/16	2016/17	Change (%)
Anatoliki Makedonia, Thraki	102	101	-1.0	2,117	2,088	-1.4
Kentriki Makedonia	295	297	0.7	6,383	6,348	-0.5
Dytiki Makedonia	67	67	0.0	1,135	1,149	1.2
Thessalia	125	125	0.0	2,842	2,884	1.5
Ipeiros	84	84	0.0	1,392	1,376	-1.1
Ionia Nisia	50	50	0.0	1,113	1,091	-2.0
Dytiki Ellada	143	143	0.0	2,820	2,708	-4.0
Stereia Ellada	118	118	0.0	2,028	1,989	-1.9
Peloponnisos	112	112	0.0	2,080	2,060	-1.0
Attiki	477	478	0.2	11,922	11,632	-2.4
Voreio Aigaio	52	53	1.9	980	993	1.3
Notio Aigaio	86	86	0.0	1,663	1,609	-3.2
Kriti	108	109	0.9	2,454	2,484	1.2
<b>TOTAL</b>	<b>1,819</b>	<b>1,823</b>	<b>0.2</b>	<b>38,929</b>	<b>38,411</b>	<b>-1.3</b>

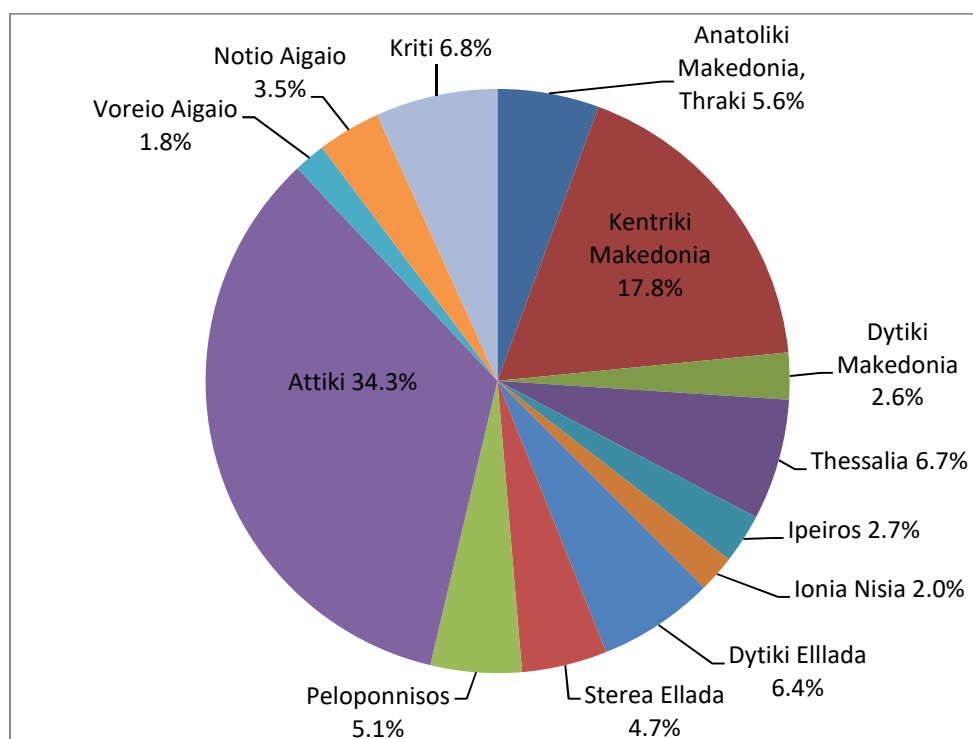
<sup>2</sup> Absent teachers are also included.

*Absent teachers* are the teachers with a fixed post in the school unit, who are absent for more than 20 days (due to illness, training, maternity leave, etc) and their replacement is pending, as well as the teachers who are seconded to other administrative posts of the Ministry of Education, Research and Religious Affairs or elsewhere.

**Table 3. Pupils enrolled and graduates by type of school unit and NUTS 2 Region  
(Lower Secondary Schools)**

<i>By Type of School Unit</i>						
School units	Pupils enrolled			Graduates		
	2015/16	2016/17	Change (%)	2015/16	2016/17	Change (%)
Public	296,940	298,287	0.5	95,388	96,269	0.9
Private	14,296	14,843	3.8	4,432	4,711	6.3
<b>TOTAL</b>	<b>311,236</b>	<b>313,130</b>	<b>0.6</b>	<b>99,820</b>	<b>100,980</b>	<b>1.2</b>
<i>By Region</i>						
Region (NUTS 2)	Pupils enrolled			Graduates		
	2015/16	2016/17	Change (%)	2015/16	2016/17	Change (%)
Anatoliki Makedonia, Thraki	17,323	17,580	1.5	5,303	5,382	1.5
Kentriki Makedonia	55,634	55,834	0.4	18,002	18,286	1.6
Dytiki Makedonia	8,188	8,069	-1.5	2,696	2,696	0.0
Thessalia	20,848	20,991	0.7	6,559	6,813	3.9
Ipeiros	8,595	8,584	-0.1	2,880	2,815	-2.3
Ionia Nisia	6,333	6,410	1.2	2,072	1,988	-4.1
Dytiki Ellada	20,023	20,081	0.3	6,292	6,470	2.8
Stereia Ellada	14,933	14,804	-0.9	4,840	4,792	-1.0
Peloponnisos	15,971	15,818	-1.0	5,223	5,027	-3.8
Attiki	105,954	107,288	1.3	33,856	34,769	2.7
Voreio Aigaio	5,489	5,514	0.5	1,766	1,805	2.2
Notio Aigaio	10,849	10,963	1.1	3,546	3,500	-1.3
Kriti	21,096	21,194	0.5	6,785	6,637	-2.2
<b>TOTAL</b>	<b>311,236</b>	<b>313,130</b>	<b>0.6</b>	<b>99,820</b>	<b>100,980</b>	<b>1.2</b>

**Graph 2. Percentage distribution of pupils enrolled in lower secondary schools, by NUTS 2 Region, school year 2016/2017**



## B. UPPER SECONDARY SCHOOLS

Tables 4 and 5 present data on the number of school units, teaching staff, pupils enrolled and graduates (Ecclesiastical Schools are not included).

**Table 4. School units and teaching staff <sup>3</sup> (Upper secondary schools)**

<i>By Type of School Units</i>						
School units	Number of school units			Teaching staff		
	2015/16	2016/17	Change (%)	2015/16	2016/17	Change (%)
<b>Public</b>	1,245	1,255	0.8	22,054*	22,013	-0.2
<b>Private</b>	88	93	5.7	1,751	1,809	3.3
<b>TOTAL</b>	<b>1,333</b>	<b>1,348</b>	<b>1.1</b>	<b>23,805*</b>	<b>23,822</b>	<b>0.1</b>
<i>By Region</i>						
Region (NUTS 2)	Number of school units			Teaching staff		
	2015/16	2016/17	Change (%)	2015/16	2016/17	Change (%)
<b>Anatoliki Makedonia, Thraki</b>	63	64	1.6	1,117	1,090	-2.4
<b>Kentriki Makedonia</b>	211	213	0.9	4,117	4,199	2.0
<b>Dytiki Makedonia</b>	36	36	0.0	696	665	-4.5
<b>Thessalia</b>	98	98	0.0	1,556	1,549	-0.4
<b>Ipeiros</b>	51	52	2.0	865	841	-2.8
<b>Ionia Nisia</b>	36	36	0.0	492	502	2.0
<b>Dytiki Ellada</b>	98	99	1.0	1,592	1,528	-4.0
<b>Stereia Ellada</b>	92	92	0.0	1,105	1,070	-3.2
<b>Peloponnisos</b>	89	91	2.2	1,294	1,269	-1.9
<b>Attiki</b>	373	379	1.6	8,353	8,495	1.7
<b>Voreio Aigaio</b>	42	42	0.0	547	524	-4.2
<b>Notio Aigaio</b>	68	68	0.0	655*	649	-0.9
<b>Kriti</b>	76	78	2.6	1,416	1,441	1.8
<b>TOTAL</b>	<b>1,333</b>	<b>1,348</b>	<b>1.1</b>	<b>23,805*</b>	<b>23,822</b>	<b>0.1</b>

\*Revised Data

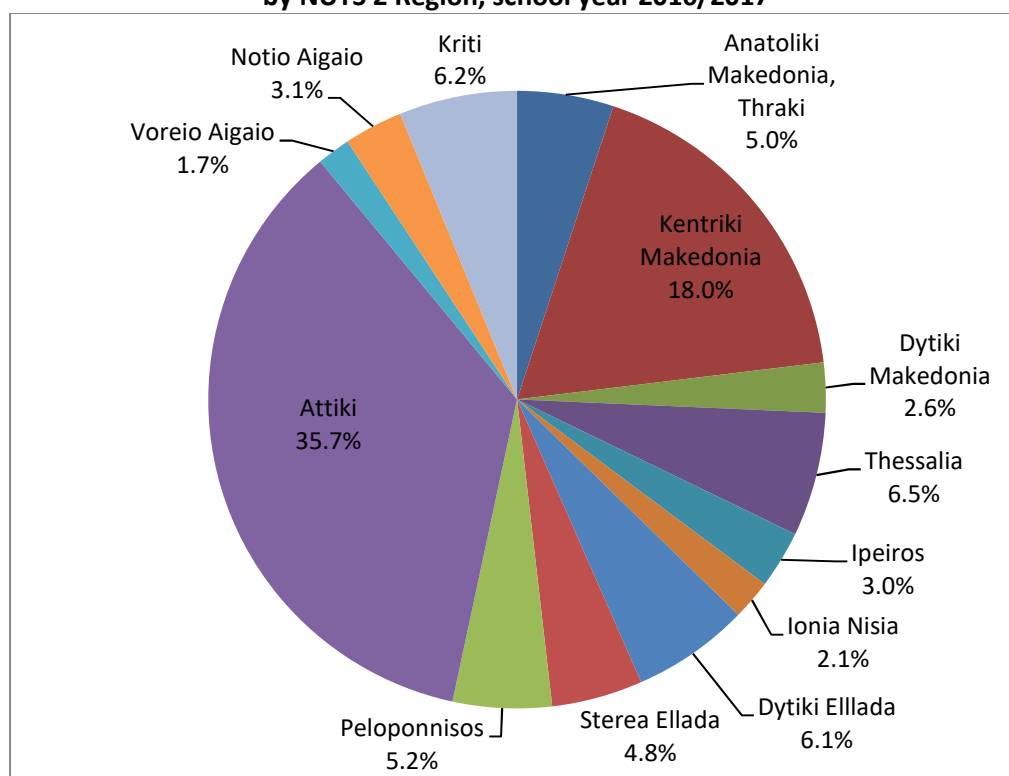
<sup>3</sup> Absent teachers are also included.

*Absent teachers* are the teachers with a fixed post in the school unit, who are absent for more than 20 days (due to illness, training, maternity leave, etc) and their replacement is pending, as well as the teachers who are seconded to other administrative posts of the Ministry of Education, Research and Religious Affairs or elsewhere.

**Table 5. Pupils enrolled and graduates by type of school unit and NUTS 2 Region (Upper Secondary Schools)**

<i>By Type of School Unit</i>						
School units	Pupils enrolled			Graduates		
	2015/16	2016/17	Change (%)	2015/16	2016/17	Change (%)
Public	227,477	230,581	1.4	71,525	72,303	1.1
Private	13,375	13,805	3.2	4,470	4,597	2.8
<b>TOTAL</b>	<b>240,852</b>	<b>244,386</b>	<b>1.5</b>	<b>75,995</b>	<b>76,900</b>	<b>1.2</b>
<i>By Region</i>						
Region (NUTS 2)	Pupils enrolled			Graduates		
	2015/16	2016/17	Change (%)	2015/16	2016/17	Change (%)
Anatoliki Makedonia, Thraki	12,272	12,332	0.5	3,914	3,874	-1.0
Kentriki Makedonia	43,361	44,040	1.6	13,698	14,005	2.2
Dytiki Makedonia	6,575	6,403	-2.6	2,174	2,091	-3.8
Thessalia	15,840	15,840	0.0	5,085	5,036	-1.0
Ipeiros	7,511	7,389	-1.6	2,420	2,436	0.7
Ionia Nisia	4,944	5,121	3.6	1,483	1,577	6.3
Dytiki Ellada	15,161	14,952	-1.4	4,992	4,617	-7.5
Stereia Ellada	11,558	11,665	0.9	3,659	3,598	-1.7
Peloponnisos	12,419	12,644	1.8	3,931	3,870	-1.6
Attiki	85,289	87,141	2.2	26,793	27,521	2.7
Voreio Aigaio	4,255	4,238	-0.4	1,341	1,321	-1.5
Notio Aigaio	7,271	7,528	3.5	2,228	2,334	4.8
Kriti	14,396	15,093	4.8	4,277	4,620	8.0
<b>TOTAL</b>	<b>240,852</b>	<b>244,386</b>	<b>1.5</b>	<b>75,995</b>	<b>76,900</b>	<b>1.2</b>

**Graph 3. Percentage distribution of pupils enrolled in upper secondary schools by NUTS 2 Region, school year 2016/2017**



## **ECCLESIASTICAL SECONDARY EDUCATION (LOWER AND UPPER SECONDARY SCHOOLS)**

The ecclesiastical lower and upper secondary schools constitute a separate branch of the Secondary General Education. More specifically:

- a) **The number of school units** in ecclesiastical secondary education remained the same between school years 2015/2016 and 2016/2017 (Tables 6 and 7, respectively);
- b) **Teaching staff**, employed in both lower and upper secondary schools in the school year 2016/2017, compared with the school year 2015/2016, increased by 6.8% (from 176 to 188 persons) (Table 8).
- c) **The number of pupils enrolled** in the school year 2016/2017, compared with the corresponding number in the school year 2015/2016, recorded an 11.1% increase in ecclesiastical lower secondary schools and a 5.9% decrease in ecclesiastical upper secondary schools (Tables 6 and 7, respectively);
- d) **The number of graduates** in the school year 2016/2017, compared with the corresponding number in the school year 2015/2016, recorded a 13.9% increase in ecclesiastical lower secondary schools and a 1.2% increase in ecclesiastical upper secondary schools (Tables 6 and 7, respectively);

**Table 6. Ecclesiastical Lower Secondary Schools**

<b>Pupils enrolled/Graduates and number of school units</b>			
	<b>School Year</b>		<b>Change (%)</b>
	<b>2015/16</b>	<b>2016/17</b>	
<b>Pupils enrolled</b>	<b>216</b>	<b>240</b>	<b>11.1</b>
<b>Graduates</b>	<b>72</b>	<b>82</b>	<b>13.9</b>
<b>Number of School Units<sup>4</sup></b>	<b>7</b>	<b>7</b>	<b>0.0</b>

**Table 7. Ecclesiastical Upper Secondary Schools**

<b>Pupils enrolled/Graduates and number of school units</b>			
	<b>School Year</b>		<b>Change (%)</b>
	<b>2015/16</b>	<b>2016/17</b>	
<b>Pupils enrolled</b>	<b>556</b>	<b>523</b>	<b>-5.9</b>
<b>Graduates</b>	<b>173</b>	<b>175</b>	<b>1.2</b>
<b>Number of School Units<sup>5</sup></b>	<b>10</b>	<b>10</b>	<b>0.0</b>

**Table 8. Teaching Staff in Ecclesiastical Secondary Education**

<b>Teaching Staff</b>			
	<b>School Year</b>		<b>Change (%)</b>
	<b>2015/16</b>	<b>2016/17</b>	
<b>TOTAL</b>	<b>176</b>	<b>188</b>	<b>6.8</b>

<sup>4</sup> All lower secondary schools include upper secondary school classes.

<sup>5</sup> Lower secondary school units that host upper secondary school classes are included.

## SECOND CHANCE SCHOOLS

Second Chance Schools are lower secondary education schools addressed to pupils that are over 18 years old. Data concerning the Second Chance Schools are presented for the school year 2016/2017 compared with school year 2015/2016 and the following can be observed:

- a) **School units** in the school year 2016/2017 compared with the school 2015/2016 decreased by 2.2% (Table 9).
- b) In the school year 2016/2017 compared with the school 2015/2016, **teaching staff** decreased by 3.7% (Table 10).
- c) **The number of pupils enrolled** in the school year 2016/2017, compared with the corresponding number in the school year 2015/2016, recorded a 1.4% decrease (Table 11).
- d) **The number of foreign pupils** in the school year 2016/2017, compared with the school year 2015/2016, increased by 15.5% (table 12).
- e) **The number of pupils of the second grade that graduated** in the school year 2016/2017, compared with the corresponding number in the school year 2015/2016, recorded a 4.1% decrease (table 13).

**Table 9. Number of school units of Second Chance Schools by type, school year 2016/2017**

Type of school unit	Total number of school units			Of which:					
				Central Unit			Branches		
	2015/16	2016/17	Change %	2015/16	2016/17	Change %	2015/16	2016/17	Change %
<b>TOTAL</b>	<b>92</b>	<b>90</b>	<b>-2.2</b>	<b>62</b>	<b>65</b>	<b>4.8</b>	<b>30</b>	<b>25</b>	<b>-16.7</b>
Day	8	10	25.0	7	8	14.3	1	2	100.0
Afternoon	84	80	-4.8	55	57	3.6	29	23	-20.7

**Table 10. Number of teaching staff of Second Chance Schools, by status and gender, school year 2016/2017**

Status of teaching staff	Total			Males			Females		
	2015/16	2016/17	Change %	2015/16	2016/17	Change %	2015/16	2016/17	Change %
<b>TOTAL</b>	<b>908</b>	<b>874</b>	<b>-3.7</b>	<b>341</b>	<b>344</b>	<b>0.9</b>	<b>567</b>	<b>530</b>	<b>-6.5</b>
Principals	62	65	4.8	44	44	0.0	18	21	16.7
Vice Principals	59	65	10.2	31	35	12.9	28	30	7.1
Seconded permanent staff	206	214	3.9	84	95	13.1	122	119	-2.5
Fixed-Term Contract staff	581	530	-8.8	182	170	-6.6	399	360	-9.8
Hours worked by Fixed Term Contract staff, per year	97,879	62,980	-35.7	29,658	20,541	-30.7	68,221	42,439	-37.8



**Table 11. Number of pupils of Second Chance Schools by gender and grade, school year 2016/2017**

Grade	Total			Males			Females		
	2015/16	2016/17	Change %	2015/16	2016/17	Change %	2015/16	2016/17	Change %
<b>TOTAL</b>	<b>5,241</b>	<b>5,169</b>	<b>-1.4</b>	<b>3,025</b>	<b>3,023</b>	<b>-0.1</b>	<b>2,216</b>	<b>2,146</b>	<b>-3.2</b>
Grade A	2,899	2,902	0.1	1,649	1,776	7.7	1,250	1,126	-9.9
Grade B	2,342	2,267	-3.2	1,376	1,247	-9.4	966	1,020	5.6

**Table 12. Number of foreign pupils of Second Chance Schools by gender and citizenship, school year 2016/2017**

Citizenship	Total			Males			Females		
	2015/16	2016/17	Change %	2015/16	2016/17	Change %	2015/16	2016/17	Change %
<b>TOTAL</b>	<b>825</b>	<b>953</b>	<b>15.5</b>	<b>566</b>	<b>711</b>	<b>25.6</b>	<b>259</b>	<b>242</b>	<b>-6.6</b>
EU Member State	86	177	105.8	48	125	160.4	38	52	36.8
Outside the EU	720	763	6.0	499	584	17.0	221	179	-19.0
Unknown citizenship	19	13	-31.6	19	2	-89.5	0	11	-

**Table 13. Pupils of Second Chance Schools of the second grade that graduated, by gender and NUTS 2 Region, school year 2016/2017**

NUTS 2 Region	Total			Males			Females		
	2015/16	2016/17	Change %	2015/16	2016/17	Change %	2015/16	2016/17	Change %
<b>TOTAL</b>	<b>1,871</b>	<b>1,795</b>	<b>-4.1</b>	<b>1,041</b>	<b>912</b>	<b>-12.4</b>	<b>830</b>	<b>883</b>	<b>6.4</b>
Anatoliki Makedonia, Thraki	214	221	3.3	109	83	-23.9	105	138	31.4
Kentriki Makedonia	405	418	3.2	218	193	-11.5	187	225	20.3
Dytiki Makedonia	68	49	-27.9	47	27	-42.6	21	22	4.8
Ipeiros	108	91	-15.7	56	35	-37.5	52	56	7.7
Thessalia	155	117	-24.5	97	68	-29.9	58	49	-15.5
Stereia Ellada	96	80	-16.7	61	50	-18.0	35	30	-14.3
Ionia Nisia	31	25	-19.4	14	10	-28.6	17	15	-11.8
Dytiki Ellada	101	111	9.9	51	61	19.6	50	50	0.0
Peloponnisos	76	81	6.6	45	48	6.7	31	33	6.5
Attiki	259	275	6.2	128	140	9.4	131	135	3.1
Voreio Aigaio	98	100	2.0	52	49	-5.8	46	51	10.9
Notio Aigaio	66	56	-15.2	37	28	-24.3	29	28	-3.4
Kriti	194	171	-11.9	126	120	-4.8	68	51	-25.0

## EXPLANATORY NOTES

**Survey on General Secondary Education** General Secondary Education includes lower and upper secondary schools of general education, ecclesiastical secondary schools and second chance schools. The surveys are conducted, on a yearly basis, aiming at collecting data on the number of pupils enrolled, the school units and the number of teaching staff.

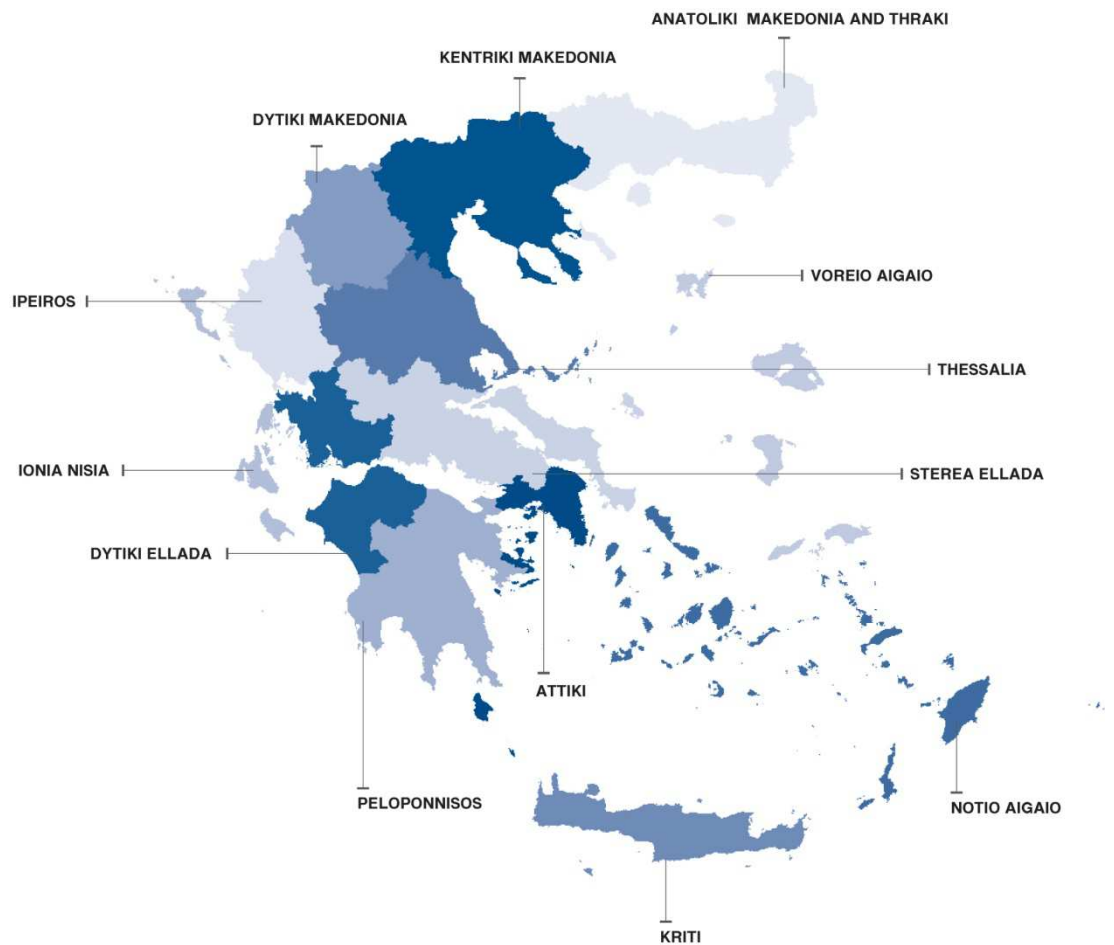
**Legal Frame** The surveys are conducted by virtue of Regulation 452/2008 of the European Parliament and the Council and implementing Regulation 912/2013 of the European Commission.

**Statistical Units** The statistical units are the school units.

**Coverage** Greece total.

**Geographical Classification** The geographical classification is based on Nomenclature of Territorial Units for Statistics.

**Map of the 13 Regions (NUTS 2) of Greece**



<b>Dissemination of results</b>	The data are posted on a yearly basis on the website of ELSTAT and are published in a relevant Press Release.
<b>Reference period</b>	The data of the surveys refer to the end of school year 2016/2017.
<b>Methodology and coverage</b>	<p>Until the school year 2013/2014, the surveys on General Secondary Education used to be census, yearly surveys and they were conducted by ELSTAT.</p> <p>For the school year 2014/2015 onwards the data of these surveys are collected as follows:</p> <ul style="list-style-type: none"> <li>– As regards public school units, the data were extracted from the “live” e-platform “MySchool” of the Ministry of Education, Research and Religious Affairs.</li> <li>– As regards private school units, the data were collected from the questionnaires that had been sent to the relevant school units.</li> </ul> <p>For Second Chance Schools’ survey, questionnaires were sent to the schools.</p>
<b>References</b>	<p>More information, such as tables with the survey results, samples of questionnaires, etc, on the Survey on General Secondary Education can be found on the webpage of ELSTAT <a href="http://www.statistics.gr">www.statistics.gr</a> and at the link: “Statistics” / Population and Social Conditions / Education / Lower Secondary Education Schools (Beginning – End of school year) or Upper Secondary Education Schools (Beginning – End of school year)”.</p>