

PRESS RELEASE

SURVEYS ON SECONDARY GENERAL EDUCATION (LOWER AND UPPER SECONDARY SCHOOLS) END OF SCHOOL YEAR 2014/2015

The Hellenic Statistical Authority (ELSTAT) announces data on Secondary General Education (lower and upper secondary schools) deriving from the relevant surveys for the end of the school year 2014/2015. In the first part of this press release, data on lower and upper secondary education schools are presented and in the second part follows the Ecclesiastical Secondary Education, as a branch of the Secondary General Education.

GENERAL SECONDARY EDUCATION (LOWER AND UPPER SECONDARY SCHOOLS)

The data collected from the surveys on Secondary Education, pertaining to lower and upper secondary education schools can be summarized as follows:

- a) **The number of pupils enrolled** in the school year 2014/2015, compared with the corresponding number in the school year 2013/2014, recorded a 0.7% increase in lower secondary schools and a 1.6% decrease in upper secondary schools (Tables 2 and 4, respectively);
- b) **The number of graduates** in the school year 2014/2015, compared with the corresponding number in the school year 2013/2014, recorded a 6.1% increase in lower secondary schools and a 2.7% increase in upper secondary schools (Tables 2 and 4, respectively);
- c) **School units** increased by 0.3% in lower secondary schools and by 1.6% in upper secondary schools (Tables 3 and 5, respectively);
- d) **Teaching staff** decreased by 3.0% in lower secondary schools and by 3.7% in upper secondary schools (Tables 3 and 5, respectively);
- e) **The ratio of teaching staff to pupils**, for the school year 2014/2015, is 1 teacher for 8.3 pupils in lower secondary schools and 1 teacher for 10.2 pupils in upper secondary schools, while for the school year 2013/2014 the ratio was 1 to 8.0 and 1 to 9.9, respectively (Tables 2,3,4 and 5);
- f) The **Region of Attiki** accounts for the largest share of pupils enrolled in Secondary Education in Greece, with 33.7% in lower secondary schools and 35.1% in upper secondary schools (Tables 2 and 4, respectively).

Information:

Social Statistics Division

Education Statistics Section

Evdokia Oikonomou, Evanthia Stavradi

Tel: +30 213 135 2134, +30 213 135 2781

Fax: +30 213 135 2780

e-mail: evd.oikonomou@statistics.gr

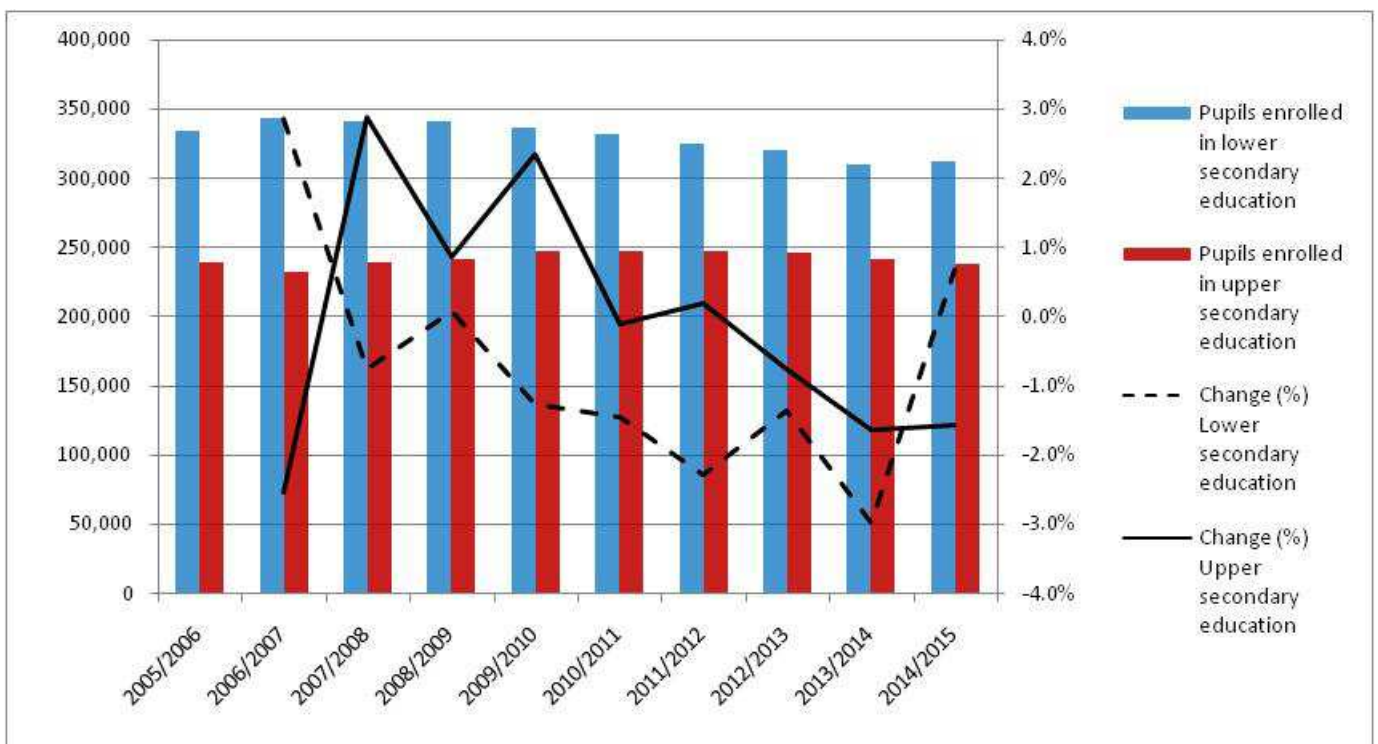
e.stavraki@statistics.gr

More specifically, Table 1 and Chart 1 depict the evolution of pupil population in lower and upper secondary education during the period 2005/2006 to 2014/2015.

Table 1
Evolution of pupil population in Secondary Education 2005/06 – 2014/15

School year	Pupils enrolled ¹	
	Lower secondary education	Upper secondary education
2005/2006	334,235	238,975
2006/2007	343,765	232,926
2007/2008	341,107	239,652
2008/2009	341,315	241,726
2009/2010	336,938	247,441
2010/2011	332,005	247,220
2011/2012	324,402	247,717
2012/2013	319,950	245,892
2013/2014	310,389	241,905
2014/2015	312,494	238,134

Chart 1
Evolution of pupil population in Secondary Education 2005/06 – 2014/15



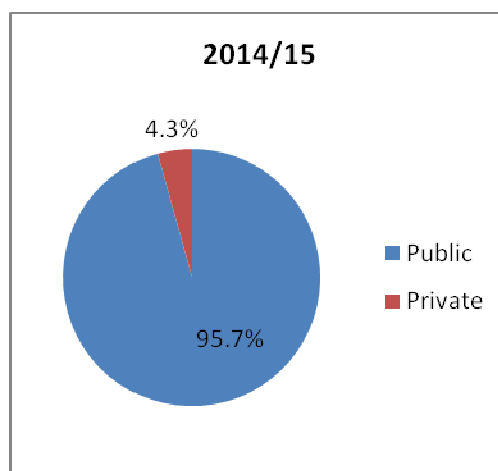
¹ Ecclesiastical secondary education is not included.

A, LOWER SECONDARY SCHOOLS

Table 2, Pupils enrolled and graduates by Type of School Unit and Region²
(Lower Secondary Schools)

<i>By Type of School Unit</i>						
School units	Pupils enrolled			Graduates		
	2013/14	2014/15	Change (%)	2013/14	2014/15	Change (%)
Public	296,347	298,969	0.9	89,448	95,359	6.6
Private	14,042	13,525	-3.7	4,508	4,335	-3.8
TOTAL	310,389	312,494	0.7	93,956	99,694	6.1
<i>By Region</i>						
Region (NUTS 2)	Pupils enrolled			Graduates		
	2013/14	2014/15	Change (%)	2013/14	2014/15	Change (%)
Anatoliki Makedonia, Thraki	17,958	17,584	-2.1	5,240	5,370	2.5
Kentriki Makedonia	57,083	56,732	-0.6	17,488	18,320	4.8
Dytiki Makedonia	8,549	8,319	-2.7	2,833	2,822	-0.4
Thessalia	20,537	20,699	0.8	6,469	6,666	3.0
Ipeiros	9,090	8,722	-4.0	2,904	2,900	-0.1
Ionia Nisia	6,492	6,425	-1.0	1,949	2,091	7.3
Dytiki Ellada	20,064	20,078	0.1	5,982	6,410	7.2
Stereia Ellada	15,163	14,948	-1.4	4,600	4,734	2.9
Peloponnisos	16,413	16,292	-0.7	4,823	5,264	9.1
Attiki	101,546	105,314	3.7	30,551	33,328	9.1
Voreio Aigaio	5,684	5,602	-1.4	1,737	1,842	6.0
Notio Aigaio	10,607	10,639	0.3	3,231	3,333	3.2
Kriti	21,203	21,140	-0.3	6,149	6,614	7.6
TOTAL	310,389	312,494	0.7	93,956	99,694	6.1

Chart 2
Percentage of pupils enrolled in lower secondary schools
(public / private)



² Ecclesiastical secondary education is not included.

Table 3, School units and teaching staff³ (Lower secondary education)

<i>By Type of school unit</i>						
School units	Number of school units			Teaching staff		
	2013/14	2014/15	Change (%)	2013/14	2014/15	Change (%)
Public	1,696	1,717	1.2	36,645	35,668	-2.7
Private	98	83	-15.3	2,010	1,824	-9.3
TOTAL	1,794	1,800	0.3	38,655	37,492	-3.0
<i>By Region</i>						
Region (NUTS 2)	Number of school units			Teaching staff		
	2013/14	2014/15	Change (%)	2013/14	2014/15	Change (%)
Anatoliki Makedonia, Thraki	100	101	1.0	2,058	2,029	-1.4
Kentriki Makedonia	295	295	0.0	6,481	6,224	-4.0
Dytiki Makedonia	67	67	0.0	1,170	1,151	-1.6
Thessalia	122	122	0.0	2,691	2,652	-1.4
Ipeiros	84	80	-4.8	1,402	1,314	-6.3
Ionia Nisia	50	50	0.0	1,115	1,108	-0.6
Dytiki Ellada	143	140	-2.1	2,761	2,649	-4.1
Stereia Ellada	120	119	-0.8	2,188	2,026	-7.4
Peloponnisos	111	111	0.0	2,185	2,051	-6.1
Attiki	458	470	2.6	11,459	11,358	-0.9
Voreio Aigaio	52	52	0.0	1,026	968	-5.7
Notio Aigaio	86	86	0.0	1,671	1,658	-0.8
Kriti	106	107	0.9	2,448	2,304	-5.9
TOTAL	1,794	1,800	0.3	38,655	37,492	-3.0

³ Absent teachers are also included.

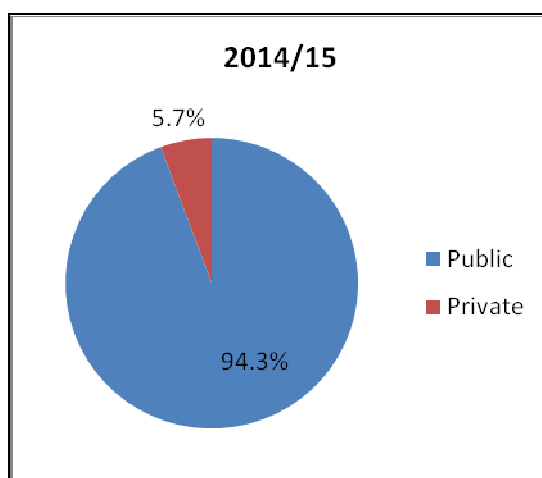
Absent teachers are the teachers with a fixed post in the school unit, who are absent for more than 20 days (due to illness, training, maternity leave, etc) and their replacement is pending, as well as the teachers who are seconded to other administrative posts of the Ministry of Education, Research and Religious Affairs or elsewhere.

B, UPPER SECONDARY SCHOOLS

Table 4, Pupils enrolled and graduates by Type of school unit and Region⁴
(Upper Secondary Schools)

<i>By Type of School Unit</i>						
School units	Pupils enrolled			Graduates		
	2013/14	2014/15	Change (%)	2013/14	2014/15	Change (%)
Public	227,933	224,578	-1.5	71,625	73,947	3.2
Private	13,972	13,556	-3.0	4,664	4,438	-4.8
TOTAL	241,905	238,134	-1.6	76,289	78,385	2.7
<i>By Region</i>						
Region (NUTS 2)	Pupils enrolled			Graduates		
	2013/14	2014/15	Change (%)	2013/14	2014/15	Change (%)
Anatoliki Makedonia, Thraki	12,349	12,007	-2.8	3,900	3,865	-0.9
Kentriki Makedonia	43,919	43,039	-2.0	13,870	14,263	2.8
Dytiki Makedonia	6,904	6,594	-4.5	2,169	2,199	1.4
Thessalia	16,166	15,727	-2.7	5,233	5,250	0.3
Ipeiros	7,537	7,454	-1.1	2,387	2,471	3.5
Ionia Nisia	5,212	4,877	-6.4	1,663	1,604	-3.5
Dytiki Ellada	15,732	15,335	-2.5	5,008	5,041	0.7
Stereia Ellada	11,976	11,563	-3.4	3,639	3,789	4.1
Peloponnisos	12,799	12,291	-4.0	3,989	4,137	3.7
Attiki	83,031	83,616	0.7	26,260	27,411	4.4
Voreio Aigaio	3,908	4,216	7.9	1,245	1,353	8.7
Notio Aigaio	7,413	7,154	-3.5	2,331	2,267	-2.7
Kriti	14,959	14,261	-4.7	4,595	4,735	3.0
TOTAL	241,905	238,134	-1.6	76,289	78,385	2.7

Chart 3
Percentage of pupils enrolled in upper secondary schools
(public / private)



⁴ Ecclesiastical secondary education is not included.

Table 5, School units and teaching staff⁵ (Upper secondary schools)

<i>By Type of School Units</i>						
School units	Number of school units			Teaching staff		
	2013/14	2014/15	Change (%)	2013/14	2014/15	Change (%)
Public	1,213	1,239	2.1	22,625	21,850	-3.4
Private	93	88	-5.4	1,720	1,589	-7.6
TOTAL	1,306	1,327	1.6	24,345	23,439	-3.7
<i>By Region</i>						
Region (NUTS 2)	Number of school units			Teaching staff		
	2013/14	2014/15	Change (%)	2013/14	2014/15	Change (%)
Anatoliki Makedonia, Thraki	63	63	0.0	1,212	1,089	-10.1
Kentriki Makedonia	210	210	0.0	4,231	4,050	-4.3
Dytiki Makedonia	36	36	0.0	719	694	-3.5
Thessalia	93	96	3.2	1,641	1,497	-8.8
Ipeiros	48	51	6.3	903	876	-3.0
Ionia Nisia	36	36	0.0	513	495	-3.5
Dytiki Elllada	95	98	3.2	1,664	1,593	-4.3
Stereia Elllada	92	90	-2.2	1,190	1,122	-5.7
Peloponnisos	87	88	1.1	1,347	1,277	-5.2
Attiki	364	373	2.5	8,235	8,150	-1.0
Voreio Aigaio	39	42	7.7	522	546	4.6
Notio Aigaio	67	68	1.5	691	643	-6.9
Kriti	76	76	0.0	1,477	1,407	-4.7
TOTAL	1,306	1,327	1.6	24,345	23,439	-3.7

⁵ Absent teachers are also included.

Absent teachers are the teachers with a fixed post in the school unit, who are absent for more than 20 days (due to illness, training, maternity leave, etc) and their replacement is pending, as well as the teachers who are seconded to other administrative posts of the Ministry of Education, Research and Religious Affairs or elsewhere.

ECCLESIASTICAL SECONDARY EDUCATION (LOWER AND UPPER SECONDARY SCHOOLS)

The ecclesiastical lower and upper secondary schools constitute a separate branch of the Secondary General Education,

- a) **The number of pupils enrolled** in the school year 2014/2015, compared with the corresponding number in the school year 2013/2014, recorded a 16,1% increase in ecclesiastical lower secondary schools and a 24,9% increase in ecclesiastical upper secondary schools (Tables 6 and 7, respectively);
- b) **The number of graduates** in the school year 2014/2015, compared with the corresponding number in the school year 2013/2014, recorded a 12,1% increase in ecclesiastical lower secondary schools and an 18,9% increase in ecclesiastical upper secondary schools (Tables 6 and 7, respectively);
- c) **The number of school units** in ecclesiastical secondary education remained the same between school years 2013/2014 and 2014/2015 (Tables 6 and 7, respectively);
- d) **Teaching staff** (which refers to both lower and upper secondary schools) in the school year 2014/2015, compared with the school year 2013/2014, increased by 11,8% (from 170 to 190 persons),

Table 6, Ecclesiastical Lower Secondary Schools

Pupils enrolled/Graduates and number of school units			
	School Year		Change (%)
	2013/14	2014/15	
Pupils enrolled	186	216	16.1
Graduates	58	65	12.1
Number of School Units⁶	7	7	0.0

Table 7, Ecclesiastical Upper Secondary Schools

Pupils enrolled/Graduates and number of school units			
	School Year		Change (%)
	2013/14	2014/15	
Pupils enrolled	410	512	24.9
Graduates	106	126	18.9
Number of School Units⁷	10	10	0.0

⁶ All lower secondary schools include upper secondary school classes.

⁷ Lower secondary school units that host upper secondary school classes are included.

EXPLANATORY NOTES

Survey on General Secondary Education	General Secondary Education includes lower and upper secondary schools of general education, The surveys are conducted, on a yearly basis, aiming at collecting data on the number of pupils enrolled, the school units and the number of teaching staff,
Legal Frame	The surveys are conducted by virtue of Regulations (EU) No 452/2008 and 912/2013 of the European Parliament and of the Council,
Statistical Units	The statistical units are the school units,
Coverage	Greece total,
Dissemination of results	The data are posted on a yearly basis on the website of ELSTAT and are published in a relevant Press Release,
Reference period	The data of the surveys refer to the end of school year 2014/2015, For comparability reasons, the data of the end of the previous school year 2013/2014 are also provided,
Methodology and coverage	Until the school year 2013/2014, the surveys on General Secondary Education used to be census, yearly surveys and they were conducted by ELSTAT, For the school year 2014/2015 the data of these surveys were collected as follows: <ul style="list-style-type: none">– As regards public school units, the data were extracted from the “live” e-platform “MySchool” of the Ministry of Education, Research and Religious Affairs,– As regards private school units, the data were collected from the questionnaires that had been sent to the relevant school units,
References	More information, such as tables with the survey results, samples of questionnaires, etc, on the Survey on General Secondary Education can be found on the webpage of ELSTAT www.statistics.gr and at the link: “Statistics” / Population and Social Conditions / Education / Lower Secondary Education Schools (Beginning – End of school year) or Upper Secondary Education Schools (Beginning – End of school year)”,