



HELLENIC REPUBLIC

HELLENIC STATISTICAL AUTHORITY

Piraeus, 15 September 2020

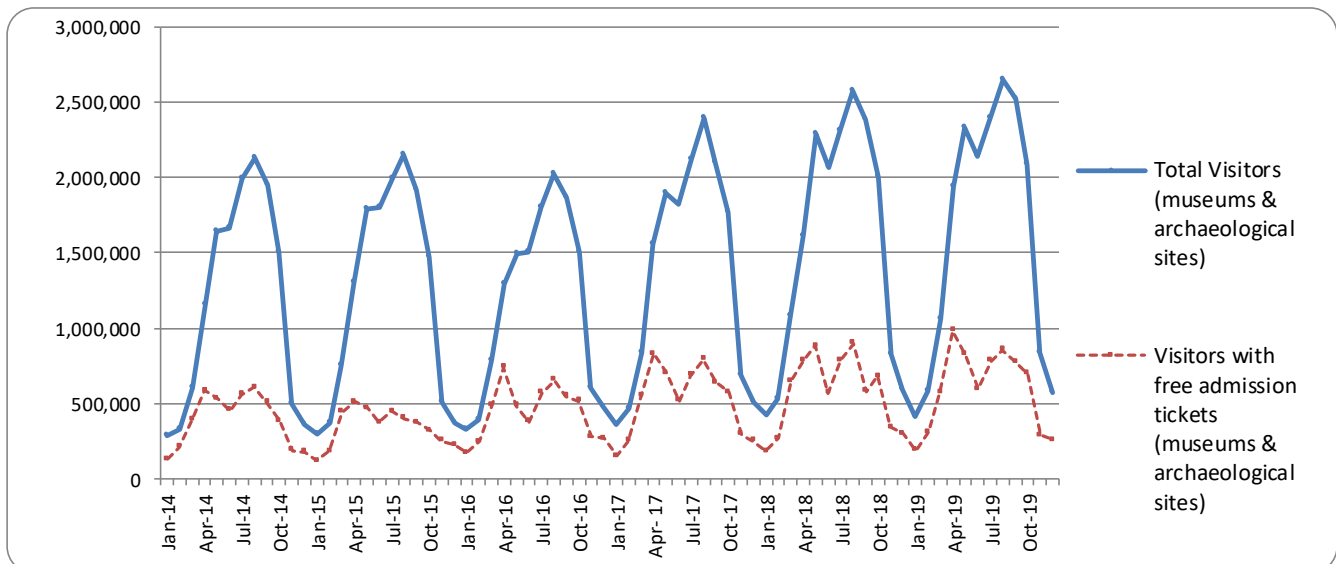


REVISED PRESS RELEASE SURVEY ON MUSEUMS AND ARCHAEOLOGICAL SITES ATTENDANCE DECEMBER 2019

The Hellenic Statistical Authority (ELSTAT) announces the revised results of the *Survey on Museums and Archaeological Sites Attendance* for December 2019. Specifically:

- In December 2019 compared with the corresponding month of 2018, Museums experienced a 3.8% decrease in the number of visitors and a 12.5% decrease in the number of free admission visitors and a 10.4% increase in their receipts (Table 1).
- In December 2019 compared with the corresponding month of 2018, the number of visitors at Archaeological sites recorded a decrease of 2.9%, while a decrease of 16.7% was observed in the number of free admission visitors and a 16.1% increase in the corresponding receipts (Table 1).
- During the twelve-month period from January to December 2019, an increase of 3.4% was observed in the number of visitors of Museums, while an increase of 0.1% was recorded in the number of free admission visitors and a 27.9% increase in the relevant receipts, in comparison with the corresponding period of 2018 (Table 2).
- As regards Archaeological sites, during the twelve-month period from January to December 2019, an increase of 5.9% was recorded in the number of visitors, while a 2.1% increase was observed in the number of free admission visitors and a 10.3% increase in the relevant receipts, in comparison with the corresponding period of 2018 (Table 2).

Graph 1: Visitors of Museums and Archaeological sites (January 2014 – December 2019⁽¹⁾)



⁽¹⁾ Revised data for 2018 and 2019.

Information on methodological issues:

Sectoral Statistics Division
Tourism and Cultural Statistics Section
Head of the Section: Asimina Katri
Tel: +30 213 135 2168
Fax: +30 213 135 2947
e-mail: a.katri@statistics.gr

Information for data provision:

Tel. +30 213 135 2022, 2308, 2310
e-mail: Data.dissem@statistics.gr

**TABLE 1: VISITORS OF MUSEUMS AND ARCHAEOLOGICAL SITES - TOTAL RECEIPTS
(DECEMBER 2018 & DECEMBER 2019)**

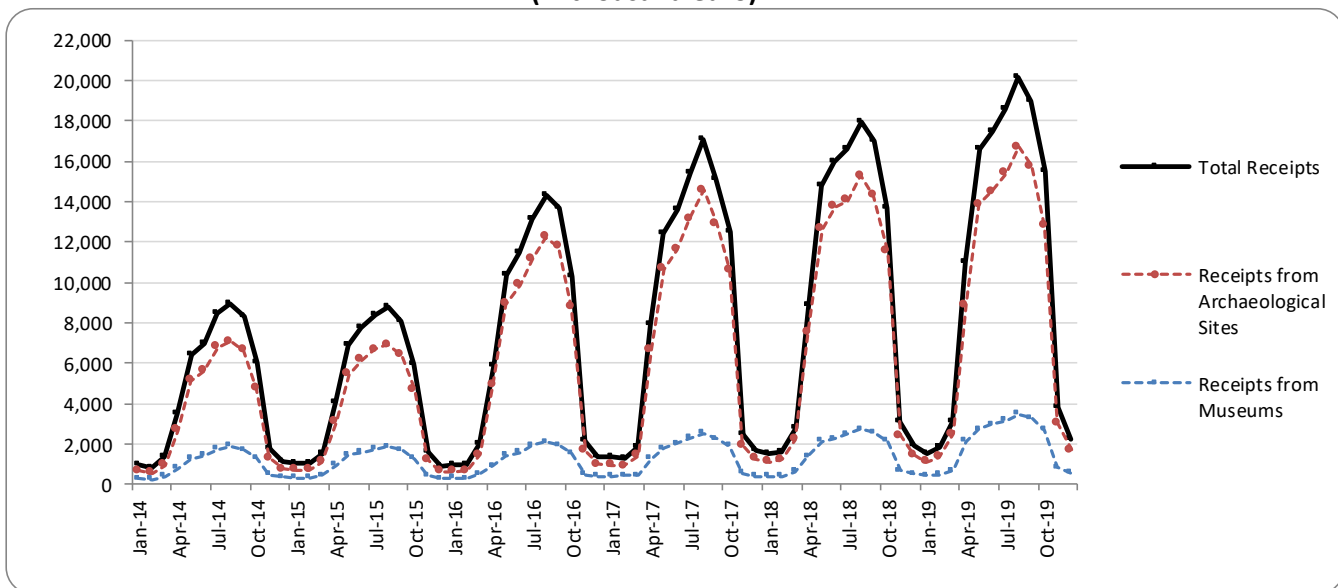
I. NUMBER OF VISITORS			
Museums and Archaeological sites	2018⁽¹⁾	2019⁽¹⁾	Change 2019/2018
Total number of visitors (A+B)	595,882	576,469	-3.3%
A. Museums (C+E)	259,900	250,116	-3.8%
Acropolis Museum	84,291	80,524	-4.5%
National Archaeological	31,134	29,250	-6.1%
Ancient Olympia	3,205	2,879	-10.2%
Palace of the Grand Master (Rhodes)	2,298	2,376	3.4%
Herakleion Archaeological (Crete)	9,161	13,866	51.4%
White Tower	19,877	21,071	6.0%
Delphi	8,422	9,987	18.6%
Other museums	101,512	90,163	-11.2%
B. Archaeological Sites (D+F)	335,982	326,353	-2.9%
Epidavros ⁽²⁾	9,337	10,221	9.5%
The Acropolis of Mycenae & Atreus' Treasure	9,352	10,839	15.9%
The Acropolis of Athens	115,761	127,511	10.2%
Sounio	10,459	10,637	1.7%
The Acropolis of Lindos	424	2,226	425.0%
Royal Tombs of Vergina	16,511	15,340	-7.1%
Ancient Olympia	8,327	6,666	-19.9%
Knossos (Crete)	18,201	18,379	1.0%
Phaistos (Crete)	6,050	3,543	-41.4%
Ancient Korinthos ⁽²⁾	3,696	4,626	25.2%
Mystras ⁽²⁾	2,717	2,730	0.5%
Delphi	13,250	13,151	-0.7%
Other archaeological sites	121,897	100,484	-17.6%
II. VISITORS WHO PAID TICKET			
	2018⁽¹⁾	2019⁽¹⁾	Change 2019/2018
Total number of visitors who paid ticket (C+D)	295,192	319,734	8.3%
C. Museums	111,253	120,027	7.9%
D. Archaeological sites	183,939	199,707	8.6%
III. VISITORS WITH FREE ADMISSION TICKETS			
	2018⁽¹⁾	2019⁽¹⁾	Change 2019/2018
Total number of visitors with free admission ticket (E+F)	300,690	256,735	-14.6%
E. Museums	148,647	130,089	-12.5%
F. Archaeological sites	152,043	126,646	-16.7%
IV. RECEIPTS (euros)			
	2018⁽¹⁾	2019⁽¹⁾	Change 2019/2018
Total Receipts (G+H)	1,951,451	2,237,131	14.6%
G. Museums	503,802	556,170	10.4%
H. Archaeological sites	1,447,649	1,680,961	16.1%

⁽¹⁾ Revised data.

⁽²⁾ A flat rate ticket applies both for the museum and the relevant archaeological site.

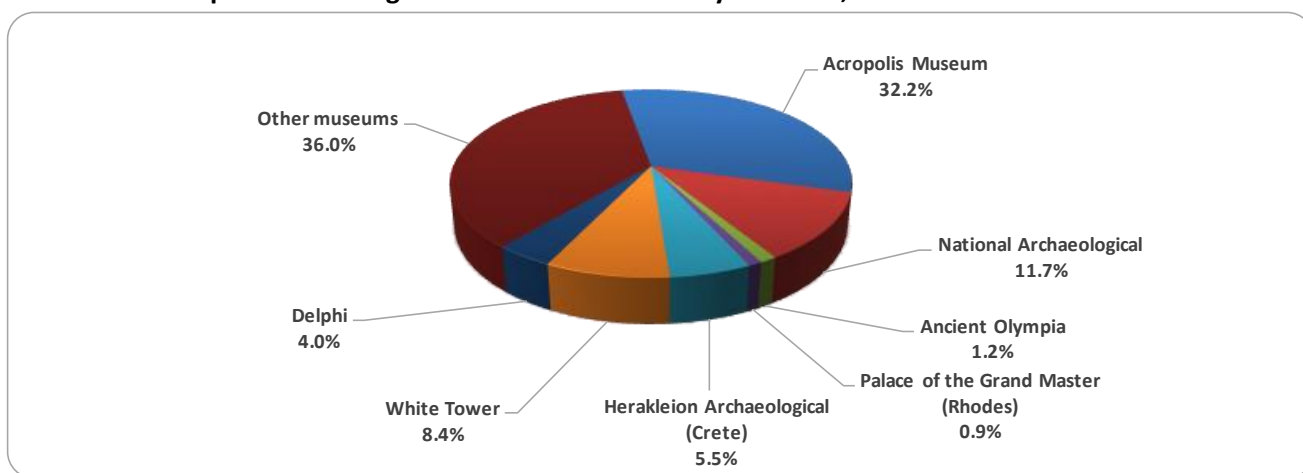
The following graphs depict the evolution of the receipts (Graph 2), as well as the number of visitors by Museum and Archaeological Site (Graphs 3 and 4, respectively).

Graph 2: Receipts from Museums and Archaeological Sites (January 2014 – December 2019⁽¹⁾)
(in thousand euro)

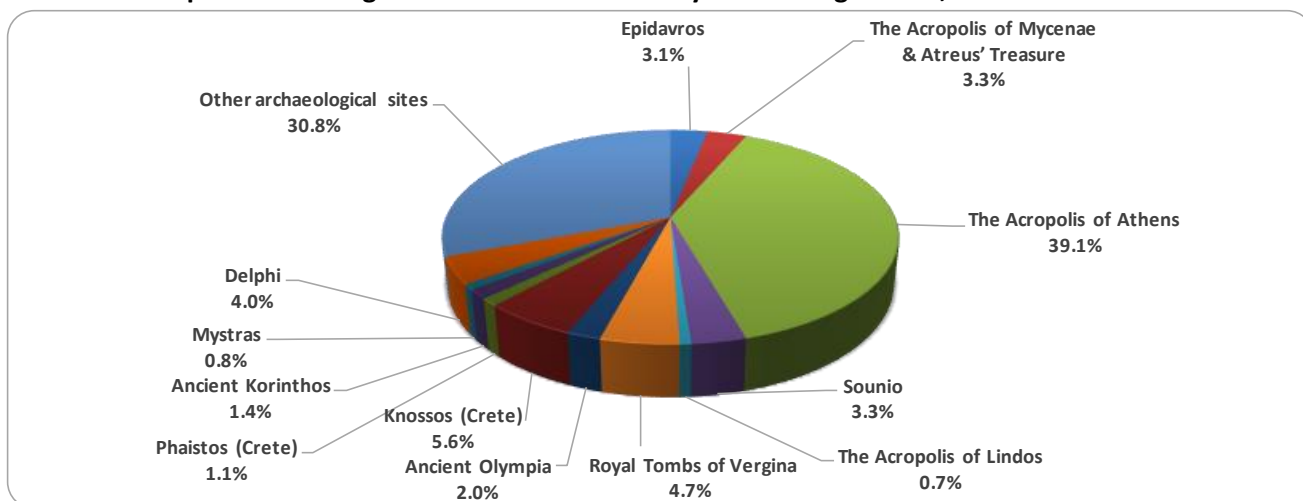


⁽¹⁾ Revised data for 2018 and 2019.

Graph 3: Percentage distribution of visitors by Museum, December 2019⁽²⁾



Graph 4: Percentage distribution of visitors by Archaeological site, December 2019⁽²⁾



⁽²⁾ Revised data.

**TABLE 2: VISITORS OF MUSEUMS AND ARCHAEOLOGICAL SITES - TOTAL RECEIPTS
(2017, 2018, JANUARY-DECEMBER 2018 & 2019)**

I. VISITORS					
Museums and Archaeological sites	2017	2018 ⁽¹⁾	JANUARY-DECEMBER		change 2019/2018
			2018 ⁽¹⁾	2019 ⁽¹⁾	
Total number of visitors (A+B)	16,524,557	18,603,576	18,603,576	19,559,278	5.1%
A. Museums (C+E)	5,191,781	5,702,211	5,702,211	5,895,927	3.4%
Acropolis Museum	1,593,362	1,774,304	1,774,304	1,755,435	-1.1%
National Archaeological	545,555	594,219	594,219	608,876	2.5%
Ancient Olympia	145,118	156,658	156,658	159,348	1.7%
Palace of the Grand Master (Rhodes)	235,413	242,759	242,759	263,958	8.7%
Herakleion Archaeological (Crete)	426,191	555,031	555,031	660,533	19.0%
White Tower	268,149	225,944	225,944	251,760	11.4%
Delphi	211,827	249,754	249,754	275,993	10.5%
Other museums	1,766,166	1,903,542	1,903,542	1,920,024	0.9%
B. Archaeological Sites (D+F)	11,332,776	12,901,365	12,901,365	13,663,351	5.9%
Epidavros ⁽²⁾	469,060	548,890	548,890	535,751	-2.4%
The Acropolis of Mycenae & Atreus' Treasure	412,397	495,993	495,993	502,619	1.3%
The Acropolis of Athens ⁽³⁾	2,766,218	3,150,604	3,150,604	3,593,586	14.1%
Sounio	259,709	306,665	306,665	337,544	10.1%
The Acropolis of Lindos	441,012	489,431	489,431	525,757	7.4%
Royal Tombs of Vergina	203,632	222,503	222,503	223,151	0.3%
Ancient Olympia	481,252	484,238	484,238	457,710	-5.5%
Knossos (Crete)	634,710	855,663	855,663	949,192	10.9%
Phaistos (Crete)	95,182	134,538	134,538	121,796	-9.5%
Ancient Korinthos ⁽²⁾	191,836	196,944	196,944	214,023	8.7%
Mystras ⁽²⁾	125,549	145,939	145,939	147,713	1.2%
Delphi	345,804	405,947	405,947	405,348	-0.1%
Other archaeological sites	4,906,415	5,464,010	5,464,010	5,649,161	3.4%
II. VISITORS WHO PAID TICKET					
	2017	2018 ⁽¹⁾	JANUARY-DECEMBER		change
			2018 ⁽¹⁾	2019 ⁽¹⁾	2019/2018
Total number of visitors who paid ticket (C+D)	10,288,448	11,576,404	11,576,404	12,434,987	7.4%
C. Museums	2,831,466	3,155,269	3,155,269	3,345,997	6.0%
D. Archaeological sites	7,456,982	8,421,135	8,421,135	9,088,990	7.9%
III. VISITORS WITH FREE ADMISSION TICKETS					
	2017	2018 ⁽¹⁾	JANUARY-DECEMBER		change
			2018 ⁽¹⁾	2019 ⁽¹⁾	2019/2018
Total number of visitors with free admission ticket (E+F)	6,236,109	7,027,172	7,027,172	7,124,291	1.4%
E. Museums	2,360,315	2,546,942	2,546,942	2,549,930	0.1%
F. Archaeological sites	3,875,794	4,480,230	4,480,230	4,574,361	2.1%
IV. RECEIPTS (euros)					
	2017	2018 ⁽¹⁾	JANUARY-DECEMBER		change
			2018 ⁽¹⁾	2019 ⁽¹⁾	2019/2018
Total Receipts (G+H)	102,887,879	115,774,516	115,774,516	130,938,846	13.1%
G. Museums	16,175,121	18,251,493	18,251,493	23,343,026	27.9%
H. Archaeological sites	86,712,758	97,523,023	97,523,023	107,595,820	10.3%

⁽¹⁾ Revised data.

⁽²⁾ A flat rate ticket applies both for the museum and the relevant archaeological site.

⁽³⁾ From May 2017 onwards, the data for the number of tickets in the archaeological site of the Acropolis of Athens include the tickets of the Ancient Theatre of Dionysus.

EXPLANATORY NOTES

Survey on Museums and Archaeological Sites Attendance	<p>The Survey on Museums and Archaeological Sites Attendance has been producing results since 1970, The survey collects data from the Archaeological Receipts Fund (ARF) of the Ministry of Culture and Sports concerning the number of visitors and the receipts from the tickets sold in the Museums and Archaeological sites of the country.</p> <p>The corresponding data for the Acropolis Museum is available from December 2009 onwards.</p>
Legal Framework	<p>The survey is conducted since 1970 on a regular basis and it produces results on a monthly and yearly basis, in compliance with the Joint Ministerial Decision 15189/B379/73.</p>
Reference Period	<p>01/12/2019 to 31/12/2019</p>
Methodology and Definitions	<p>The Survey is conducted on a monthly basis from data mainly collected from the Archaeological Receipts Fund (ARF) of the Ministry of Culture and Sports concerning the number of visitors and the receipts from the tickets sold in the Museums and Archaeological sites of the Country. ELSTAT tabulates and present the data for the whole of the Country, by month and by year.</p> <p>Number of flat rate tickets</p> <p>From April 1999 onwards, in some museums and the nearby archaeological sites, in addition to the ordinary ticket, a new “flat rate ticket” was established, which is valid for both the museum and the nearby archaeological site, The total number of these flat rate tickets for December 2019 was 16,127.</p>
References	<p>More information on the Survey on Museums and Archaeological Sites Attendance and detailed time series are available on: http://www.statistics.gr/en/statistics/-/publication/SCI21/</p>