



PRESS RELEASE

CONSUMER PRICE INDEX: January 2020, annual inflation 0.9%

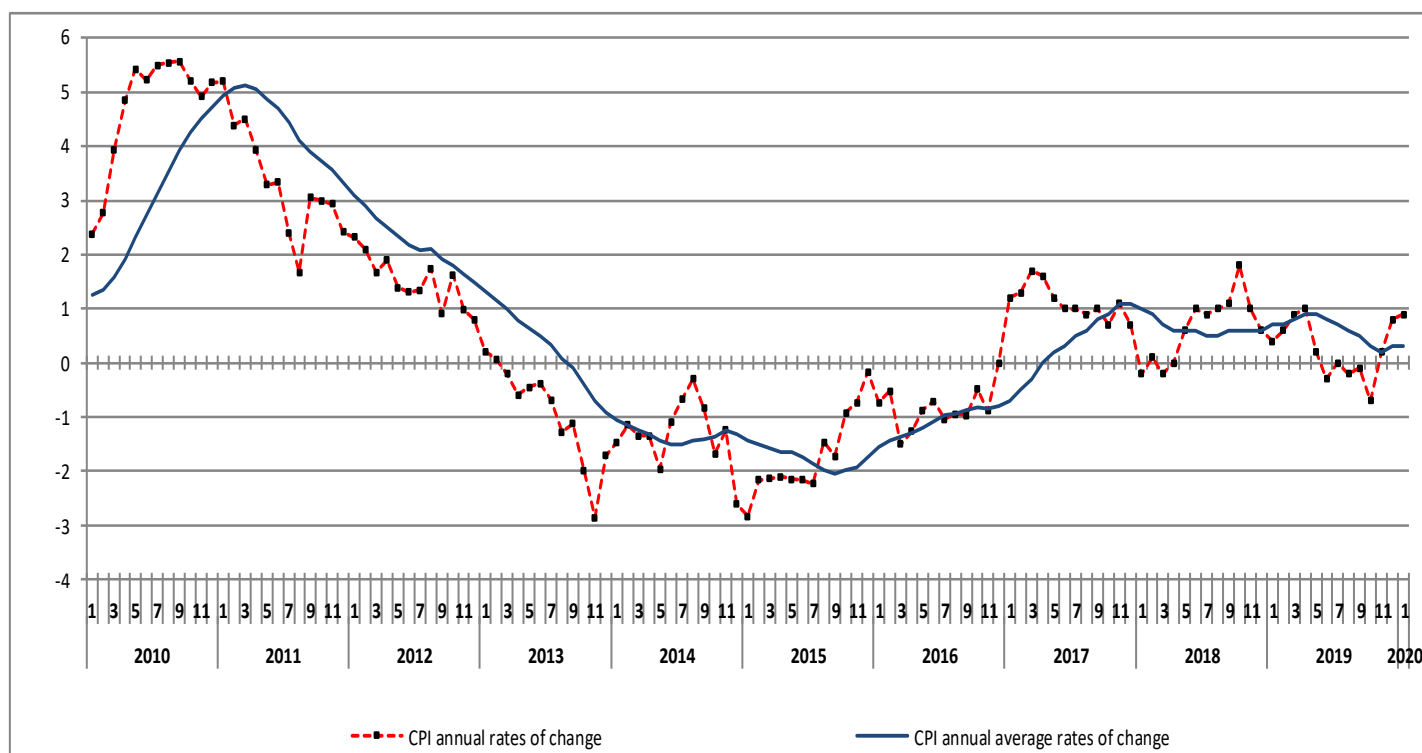
The evolution of the Consumer Price Index (CPI) of January 2020 (reference year 2009=100.0) is depicted as follows:

The CPI in January 2020 compared with January 2019 increased by 0.9%. In January 2019, the annual rate of change of the CPI was 0.4% (Table 2).

The CPI in January 2020 compared with December 2019, decreased by 1.7%. In January 2019, the monthly rate of change of the CPI was -1.8% (Table 1).

The average CPI for the twelve - month period from February 2019 to January 2020, compared with the corresponding index for the period February 2018 to January 2019 increased by 0.3%. The annual rate of change of the average CPI between the twelve - month period February 2018 to January 2019 in comparison to the period February 2017 to January 2018 was 0.7% (Table 3).

Graph 1. Annual and annual average rates of change (%) of CPI



Information on methodological issues:

Population, Employment and
Cost of Living Statistics Division
Section of Retail Price Indices
Head of the Section M. Glenis
Tel: +30 213 135 2128
Fax: +30 213 135 2724
email: m.glenis@statistics.gr

Information for data provision:

Tel: +30 213 135 2022, 2308, 2310
email: data.dissem@statistics.gr

Analysis of changes of the CPI: January 2020

I. Monthly rates of change: January 2020 compared with December 2019 (Tables 1, 4)

The 1.7% decrease of the Overall CPI in January 2020, compared with the corresponding index in December 2019 is, mainly, due to the changes in the groups of goods and services as follows:

1. A decrease of:

- 26.1% in Clothing and footwear, due to the period of winter sales.
- 0.2% in the group Housing, due to the decrease, mainly, in the prices of *natural gas*. This decrease was partly offset by the increase, mainly, in the prices of *heating oil*.
- 0.7% in the group Household equipment due to the period of winter sales. This decrease was partly offset by the increase, mainly, in the prices of *non-durable household articles*.
- 1.4% in the group Transport, due to the decrease, mainly, in the prices of *tickets for passenger transport by air*. This decrease was partly offset by the increase, mainly, in the prices of *petrol*.
- 0.4% in the group Communication, due to the decrease, mainly, in the prices of *wireless telephone services*.
- 0.6% in the group Miscellaneous goods and services, due to the decrease, mainly, in the prices of: *other appliances and articles for personal care, personal effects*.

2. An increase of:

- 1.6% in the group Food and non-alcoholic beverages, due to the increase, mainly, in the prices of: *bread and cereals, fresh fish, fresh fruit, fresh vegetables, preserved or processed vegetables*. This increase was partly offset by the decrease, mainly, in the prices of *poultry*.
- 0.9% in the group Alcoholic beverages and tobacco, due to the increase, mainly, in the prices of *alcoholic beverages (not served)*.

II. Annual rates of change: January 2020 compared with January 2019 (Tables 2, 5)

The 0.9% increase of the Overall CPI in January 2020, compared with the corresponding index in January 2019 is, mainly, due to the changes in the groups of goods and services as follows:

1. An increase of:

- 0.4% in the group Alcoholic beverages and tobacco, due to the increase, mainly, in the prices of *alcoholic beverages (not served)*.
- 0.2% in the group Housing, due to the increase, mainly, in the prices of *heating oil*. This increase was partly offset by the decrease, mainly, in the prices of: *natural gas, electricity*.
- 1.6% in the group Health, due to the increase, mainly, in the prices of *pharmaceutical products*.
- 5.2% in the group Transport, due to the increase, mainly, in the prices of: *fuels and lubricants, tickets for passenger transport by air*.
- 0.9% in the group Communication, due to the increase, mainly, in the prices of *telephone services*.
- 0.5% in the group Education, due to the increase, mainly, in the prices of *fees of pre-primary and primary education*.
- 1.0% in the group Hotel-Cafés-Restaurants, due to the increase, mainly, in the prices of: *restaurants-confectioneries-café-buffets, hotels-motels-inns*.

2. A decrease of:

- 0.1% in the group Food and non-alcoholic beverages due to the decrease, mainly, in the prices of: *bread and cereals, poultry, fish, eggs, oils and fats, fresh vegetables, preserved or processed vegetables, potatoes, sugar-chocolates-sweets-ice creams, other food, coffee-cocoa-tea, fruit juices*. This decrease was partly offset by the increase, mainly, in the prices of: *beef, pork, lamb and goat, dried salted or smoked meat, fresh whole milk, yoghurt, fresh fruit*.
- 1.1% in Clothing and footwear, due to the decrease in the prices of articles of clothing and footwear.
- 0.5% in the group Household equipment, due to the decrease, mainly, in the prices of: *household textiles, household appliances and repair*. This decrease was partly offset by the increase, mainly, in the prices of *non-durable household articles*.
- 1.1% in the group Recreation and culture, due to the decrease, mainly, in the prices of *audiovisual and information processing equipment*.
- 0.3% in the group Miscellaneous goods and services, due to the decrease, mainly, in the prices of *other appliances and articles for personal care*. This decrease was partly offset by the increase, mainly, in the prices of *motor vehicle insurance*.

**Table 1. Monthly rates of change of CPI
(Reference year: 2009=100.0)**

Main groups of goods and services	Weights HBS 2018 (%)	2020	2019	Rate of change %	2019	2018	Rate of change %
		January	December		January	December	
1. Food & non-alcoholic beverages	202.67	106.97	105.29	1.6	107.04	104.95	2.0
2. Alcoholic beverages and tobacco	37.07	149.19	147.87	0.9	148.61	148.05	0.4
3. Clothing and footwear	65.92	76.53	103.58	-26.1	77.36	103.08	-25.0
4. Housing	141.50	120.20	120.49	-0.2	120.00	120.46	-0.4
5. Household equipment	43.08	86.69	87.31	-0.7	87.10	88.46	-1.5
6. Health	76.74	99.16	99.16	0.0	97.63	97.31	0.3
7. Transport	144.01	124.70	126.45	-1.4	118.59	122.13	-2.9
8. Communication	42.41	106.34	106.80	-0.4	105.39	105.74	-0.3
9. Recreation and culture	39.38	86.92	86.80	0.1	87.90	88.54	-0.7
10. Education	32.24	88.98	88.98	0.0	88.51	88.51	0.0
11. Hotels-Cafés-Restaurants	109.23	109.04	109.06	0.0	107.95	108.08	-0.1
12. Miscellaneous goods and services	65.75	90.86	91.44	-0.6	91.13	91.25	-0.1
Overall Index	1000.00	105.94	107.76	-1.7	105.04	106.92	-1.8

Note: The indices are rounded up to two decimal figures when published and percentage changes up to one decimal figure when published.

Graph 2. Annual and monthly rates of change (%) of CPI

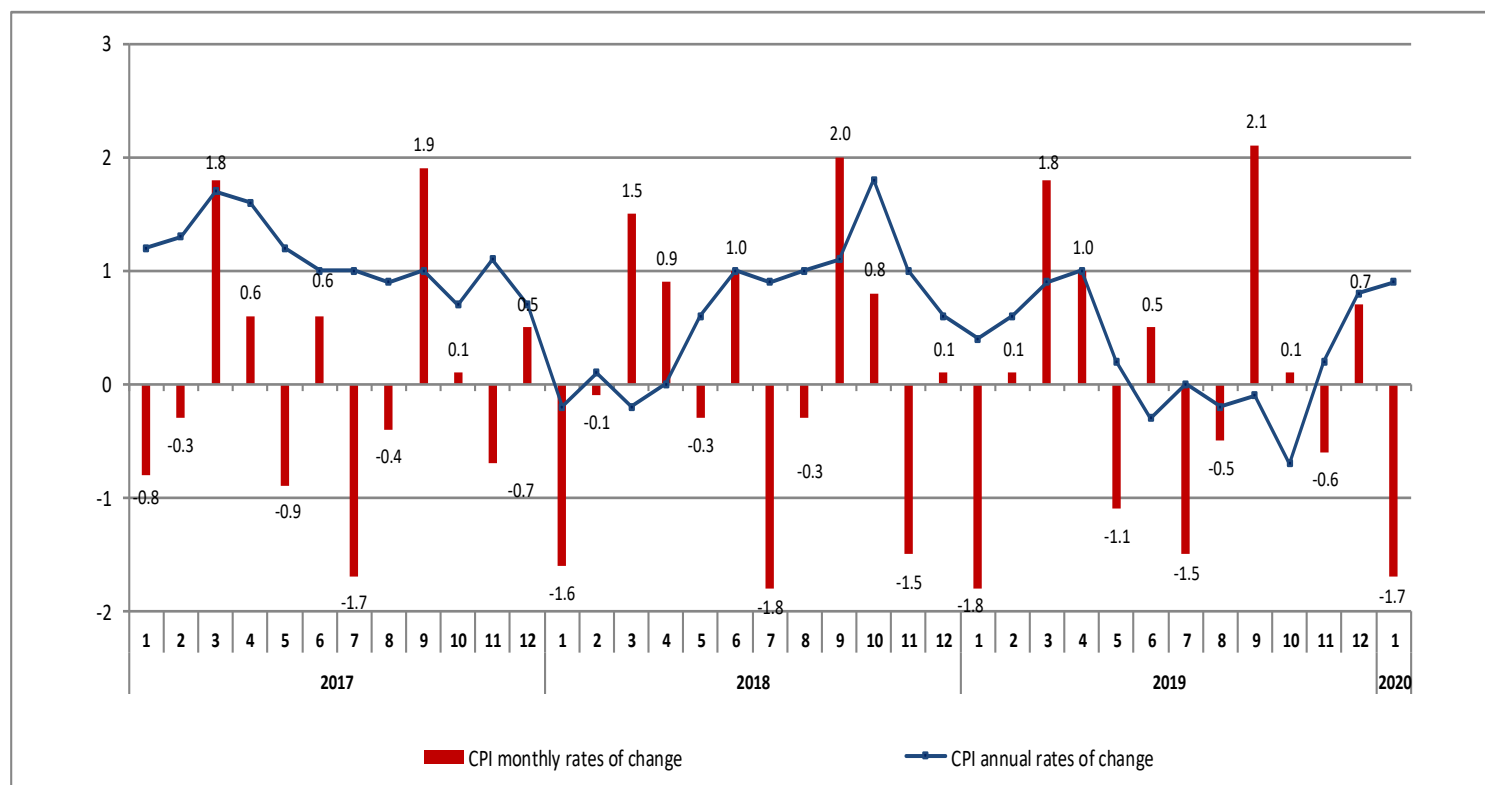


Table 2. Inflation – Annual rates of change of CPI
(Reference year: 2009=100.0)

I: January 2020/2019

Main groups of goods and services	January		Rate of change (%)	Impact
	2020	2019		
1. Food and non-alcoholic beverages	106.97	107.04	-0.1	-0.0182
2. Alcoholic beverages and tobacco	149.19	148.61	0.4	0.0139
3. Clothing and footwear	76.53	77.36	-1.1	-0.0887
4. Housing	120.20	120.00	0.2	0.0234
5. Household equipment	86.69	87.10	-0.5	-0.0207
6. Health	99.16	97.63	1.6	0.1188
7. Transport	124.70	118.59	5.2	0.7322
8. Communication	106.34	105.39	0.9	0.0408
9. Recreation and culture	86.92	87.90	-1.1	-0.0448
10. Education	88.98	88.51	0.5	0.0178
11. Hotels-Cafés-Restaurants	109.04	107.95	1.0	0.1094
12. Miscellaneous goods and services	90.86	91.13	-0.3	-0.0207
Overall Index	105.94	105.04	0.9	

II: January 2019/2018

Main groups of goods and services	January		Rate of change (%)	Impact
	2019	2018		
1. Food and non-alcoholic beverages	107.04	105.08	1.9	0.3939
2. Alcoholic beverages and tobacco	148.61	147.12	1.0	0.0435
3. Clothing and footwear	77.36	77.52	-0.2	-0.0142
4. Housing	120.00	119.20	0.7	0.0911
5. Household equipment	87.10	88.77	-1.9	-0.0839
6. Health	97.63	96.93	0.7	0.0548
7. Transport	118.59	119.96	-1.1	-0.1573
8. Communication	105.39	100.37	5.0	0.2128
9. Recreation and culture	87.90	89.03	-1.3	-0.0523
10. Education	88.51	89.22	-0.8	-0.0263
11. Hotels-Cafés-Restaurants	107.95	107.28	0.6	0.0639
12. Miscellaneous goods and services	91.13	92.32	-1.3	-0.0871
Overall Index	105.04	104.58	0.4	

Note: The indices are rounded up to two decimal figures when published and percentage changes up to one decimal figure when published.

**Table 3. Comparisons of the overall CPI
(Reference year: 2009=100.0)**

Year and month	Overall Index	Monthly rates of change %	Annual rates of change Inflation %	Annual average index (moving average)	Annual average rates of change %
2017: 1	104.76	-0.8	1.2	104.75	-0.7
2	104.46	-0.3	1.3	104.86	-0.5
3	106.33	1.8	1.7	105.01	-0.3
4	107.01	0.6	1.6	105.16	0.0
5	106.06	-0.9	1.2	105.26	0.2
6	106.72	0.6	1.0	105.35	0.3
7	104.94	-1.7	1.0	105.44	0.5
8	104.48	-0.4	0.9	105.51	0.6
9	106.45	1.9	1.0	105.60	0.8
10	106.56	0.1	0.7	105.67	0.9
11	105.77	-0.7	1.1	105.77	1.1
12	106.33	0.5	0.7	105.82	1.1
Annual average	105.82	-	-	105.82	1.1
2018: 1	104.58	-1.6	-0.2	105.81	1.0
2	104.52	-0.1	0.1	105.81	0.9
3	106.08	1.5	-0.2	105.79	0.7
4	107.05	0.9	0.0	105.80	0.6
5	106.70	-0.3	0.6	105.85	0.6
6	107.76	1.0	1.0	105.94	0.6
7	105.84	-1.8	0.9	106.01	0.5
8	105.49	-0.3	1.0	106.09	0.5
9	107.61	2.0	1.1	106.19	0.6
10	108.44	0.8	1.8	106.35	0.6
11	106.81	-1.5	1.0	106.43	0.6
12	106.92	0.1	0.6	106.48	0.6
Annual average	106.48	-	-	106.48	0.6
2019: 1	105.04	-1.8	0.4	106.52	0.7
2	105.17	0.1	0.6	106.58	0.7
3	107.08	1.8	0.9	106.66	0.8
4	108.14	1.0	1.0	106.75	0.9
5	106.95	-1.1	0.2	106.77	0.9
6	107.46	0.5	-0.3	106.75	0.8
7	105.89	-1.5	0.0	106.75	0.7
8	105.31	-0.5	-0.2	106.74	0.6
9	107.53	2.1	-0.1	106.73	0.5
10	107.67	0.1	-0.7	106.66	0.3
11	107.05	-0.6	0.2	106.68	0.2
12	107.76	0.7	0.8	106.75	0.3
Annual average	106.75	-	-	106.75	0.3
2020: 1	105.94	-1.7	0.9	106.83	0.3

Note: The indices are rounded up to two decimal figures when published and percentage changes up to one decimal figure when published.

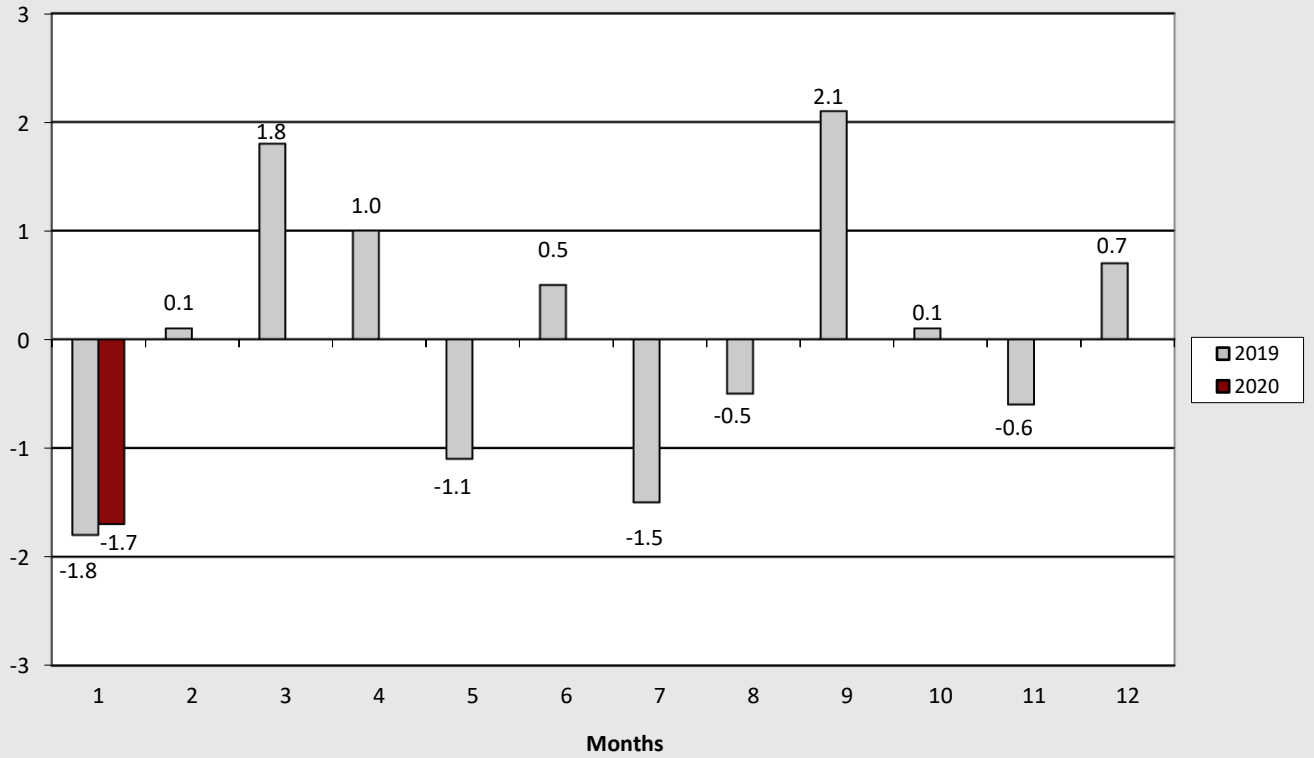
**Table 4. Major price changes from index comparison between
January 2020 and December 2019 and their impact
on the Overall CPI**

Goods and services	Rate of change (%)	Impact
Bread and cereals	0.5	0.02
Pork	1.2	0.01
Fresh fish	2.1	0.02
Fresh fruit	1.4	0.02
Fresh vegetables	18.4	0.24
Preserved or processed vegetables	1.6	0.01
Poultry	-1.8	-0.02
Alcoholic beverages (not served)	2.9	0.03
Natural gas	-12.4	-0.04
Heating oil	0.7	0.01
Non-durable household articles	0.7	0.01
Petrol	1.4	0.07
Passenger transport by air	-16.6	-0.28
Wireless telephone services	-0.8	-0.02
Other appliances and articles for personal care	-1.1	-0.03
Personal effects	-2.6	-0.01
Winter sales	-	-1.75

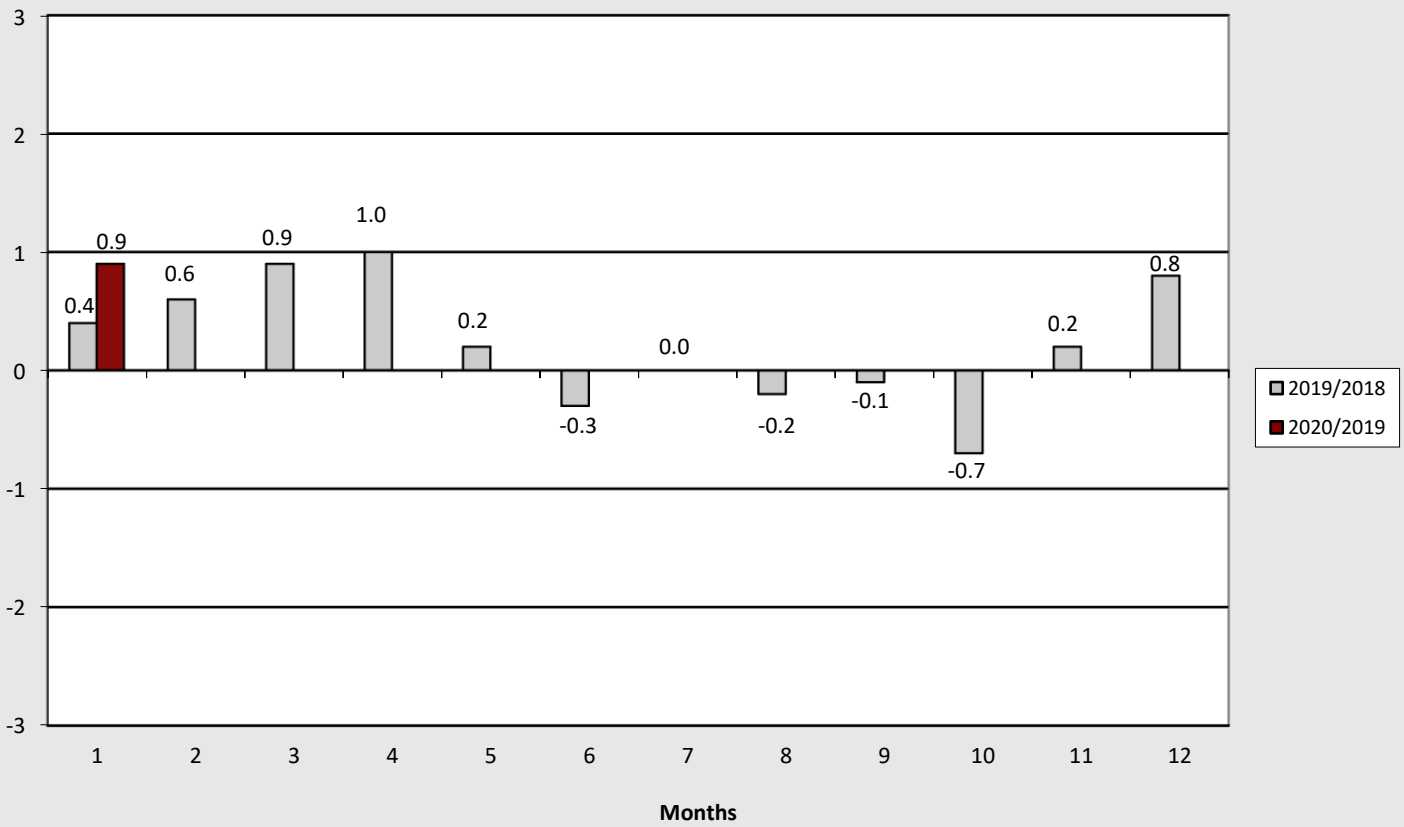
**Table 5. Major price changes from index comparison between
January 2020 and January 2019 and their impact
on the Overall CPI**

Goods and services	Rate of change (%)	Impact
Oils and fats	-6.3	-0.07
Fresh whole milk	2.8	0.02
Yoghurt	2.6	0.01
Fresh fruit	12.6	0.16
Eggs	-4.4	-0.01
Poultry	-3.3	-0.03
Bread and cereals	-1.8	-0.06
Preserved or processed vegetables	-1.7	-0.01
Sugar-chocolates-sweets-ice creams	-4.3	-0.05
Other food	-4.5	-0.02
Coffee-cocoa-tea	-6.3	-0.03
Fruit juices	-8.4	-0.02
Fish	-1.0	-0.02
Potatoes	-10.6	-0.05
Beef	1.4	0.03
Pork	9.4	0.08
Lamb and goat	8.7	0.04
Dried salted or smoked meat	4.7	0.02
Fresh vegetables	-1.0	-0.01
Alcoholic beverages (not served)	1.1	0.01
Clothing and footwear	-1.1	-0.09
Heating oil	5.4	0.12
Electricity	-0.4	-0.01
Natural gas	-21.8	-0.09
Non-durable household articles	1.2	0.02
Household textiles	-5.2	-0.02
Household appliances and repair	-1.3	-0.01
Pharmaceutical products	4.6	0.12
Fuels and lubricants	8.1	0.46
Passenger transport by air	17.8	0.28
Telephone services	1.1	0.05
Audiovisual and information processing equipment	-5.3	-0.03
Pre-primary and primary education	2.2	0.02
Restaurants-confectioneries-cafes-buffets	0.7	0.07
Hotels-motels-inns	6.4	0.04
Other appliances and articles for personal care	-1.1	-0.03
Motor vehicle insurance	1.0	0.02

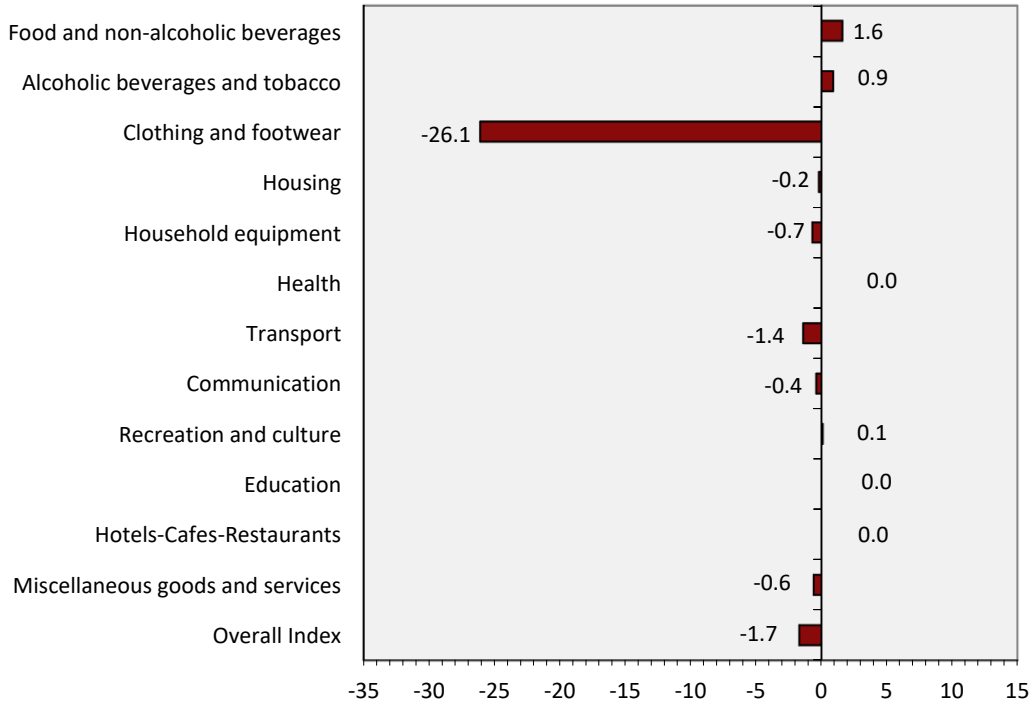
Graph 3. Monthly rates of change (%) of the overall CPI, 2019 and 2020



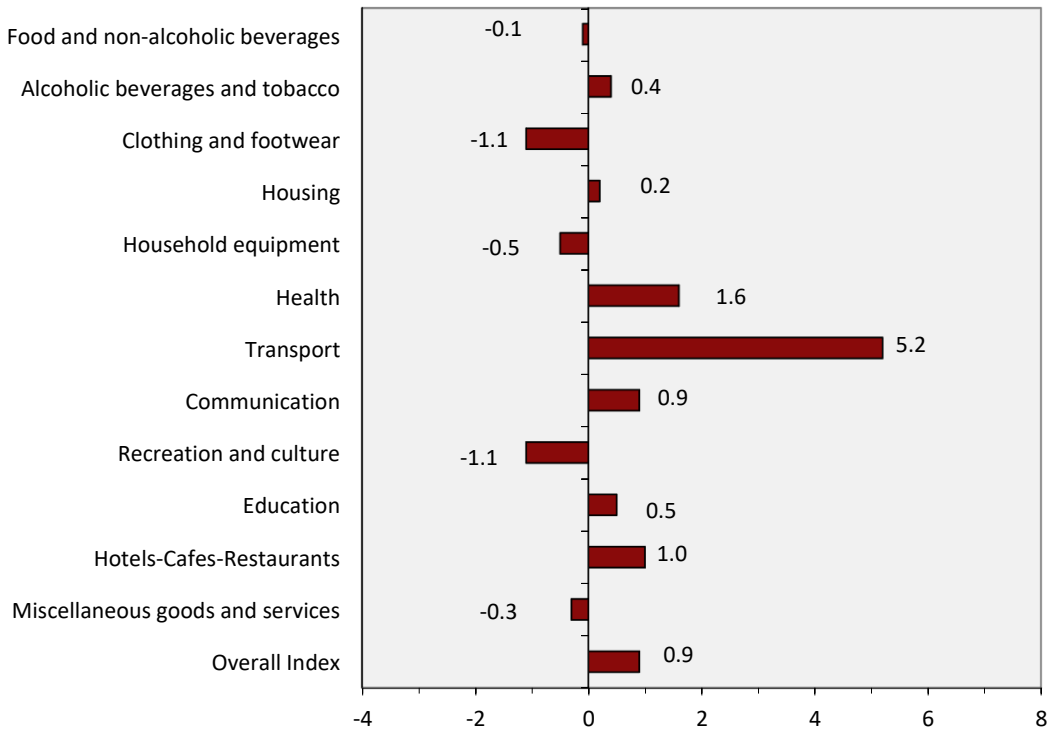
Graph 4. Annual rates of change (%) of the overall CPI, 2019 and 2020



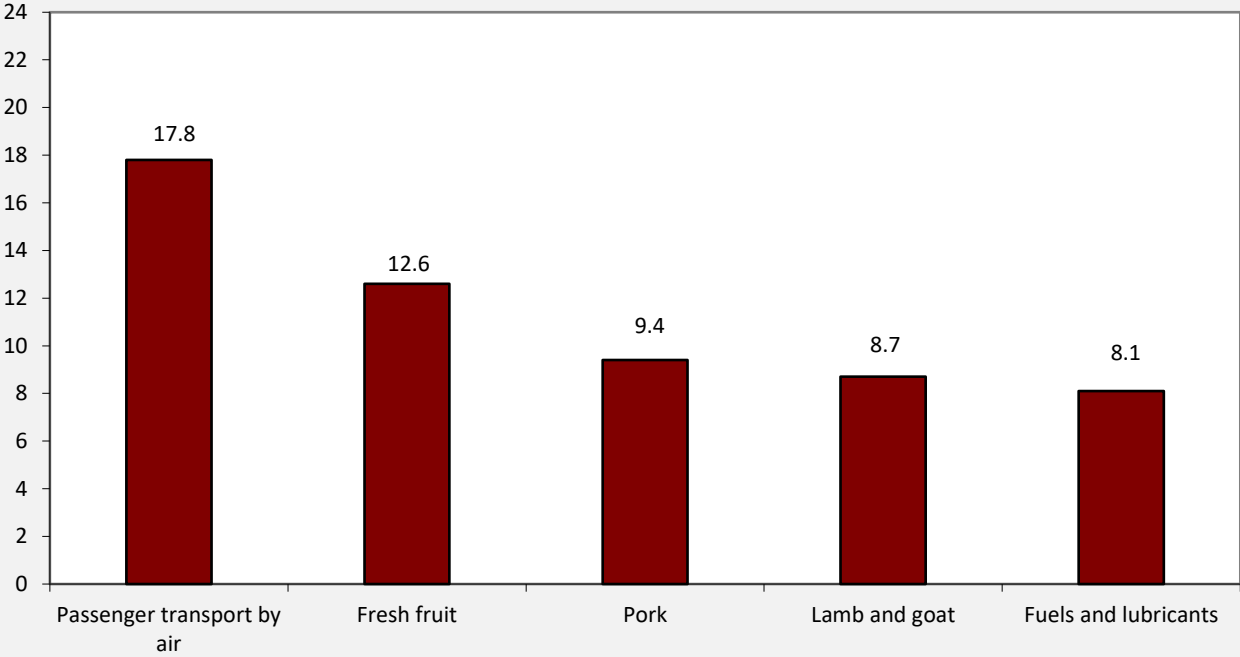
Graph 5. Monthly rates of change (%) of CPI between January 2020 and December 2019



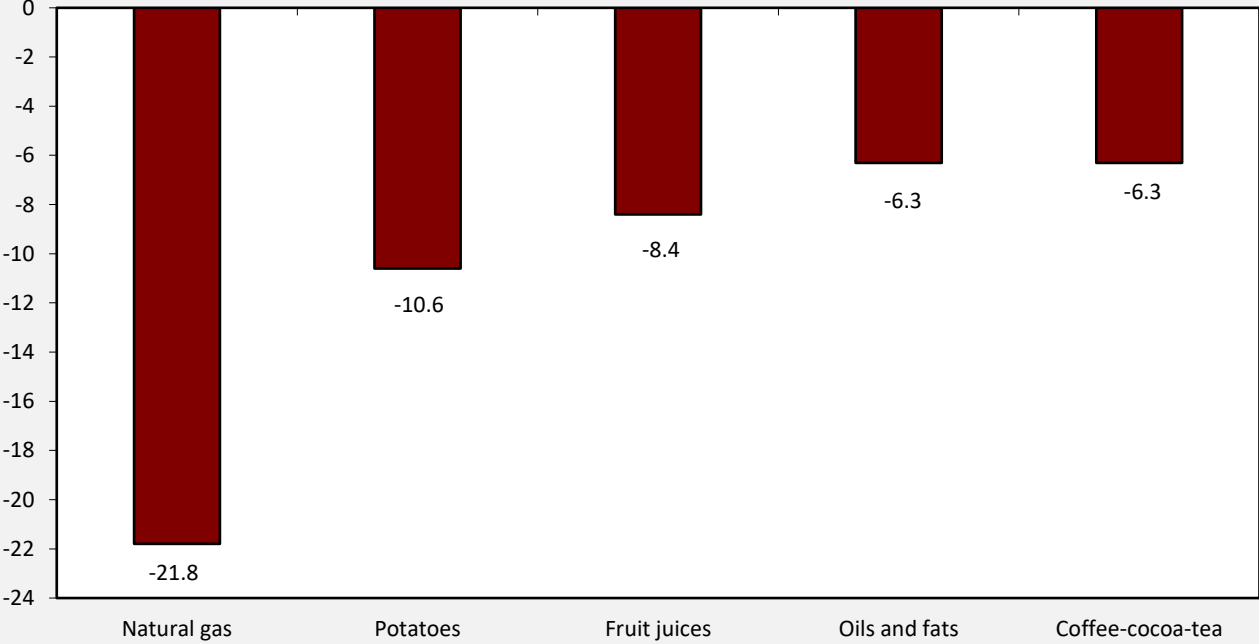
Graph 6. Annual rates of change (%) of CPI between January 2020 and January 2019



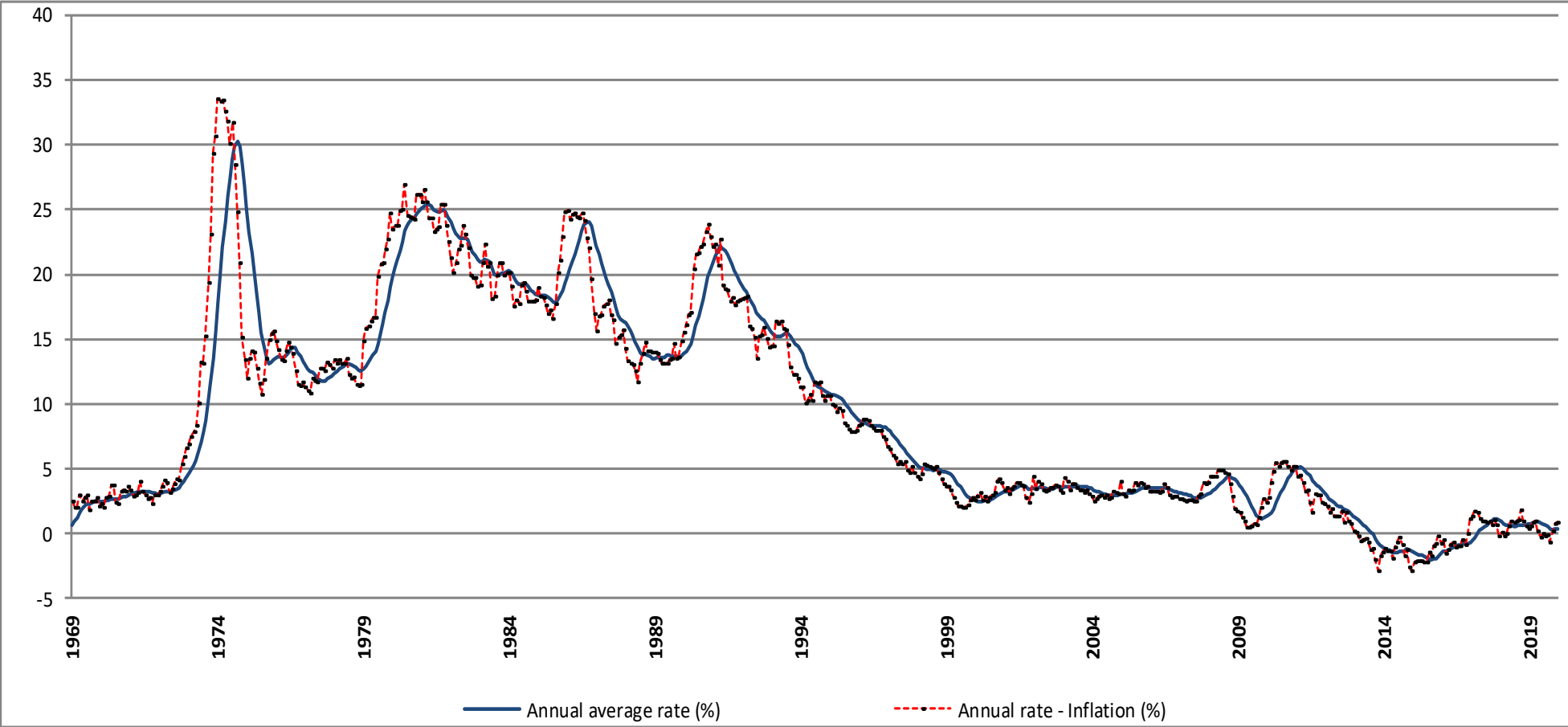
Graph 7. CPI highest annual increases (%)



Graph 8. CPI highest annual decreases (%)



Graph 9. Historical evolution of CPI, 1969 – 2020



METHODOLOGICAL NOTES

Generally	The Consumer Price Index (CPI) is compiled by the Hellenic Statistical Authority (ELSTAT) since 1959. Until the year 2000, the CPI referred to the urban areas of the Country, while from 2001 onwards it refers to the whole Country covering urban, semi-urban and rural areas.
Purpose of the index	The purpose of the CPI is to measure the general level of prices of goods and services purchased by the average Greek household.
Legal basis	Law 3832/2010 .
Reference period	Month.
Base	December of the previous year.
Reference year	2009=100.0.
Chain linking Index	The CPI index follows the chain linking method, introducing new weights annually and having as a base the December of the previous year. The weights are estimated on the basis of the most recent available data of the Household Budget Survey (HBS), extrapolated to the prices of December. The CPI, adjusted on an annual basis to the most recent consumption expenditure pattern of the private households of the Country, ensures the representativeness of goods and services, which compose the "basket" of purchases of the average household.
Geographical and population coverage of the CPI	The CPI refers to the whole Country and covers the resident households of the territory excluding collective households (hospitals, homes for the elderly, boarding houses, prisons, etc.) and non-resident households (tourists) in the Country.
Classification of items	The classification of the CPI items (goods and services) is based on the international classification COICOP (Classification of Individual Consumption by Purpose) as this has been adapted to the needs of the HICPs of the EU Member States with the COICOP5/HICP classification.
Weights of items	The weights of CPI items are updated every year, on the basis of the most recent available data of HBS. The weights are calculated as the share (%) of the expenditures for each group, subgroup and item (good or service) to the total household expenditure of the average household.
Price collection Cities	The CPI prices are collected in 27 cities with representative markets for the coverage of the 13 Regions of the Country. The selection criteria of the price collection cities are the size and the particularities of their markets, the possibility of continuous price collection, the comparability of the index and the cost of price collection.
Population weights	The calculation of the population weights by regions is based on the population data of the 2011 General Population Census and the expenditure data of the latest available HBS by regions.
Selection of items	The composition of the "household basket" i.e. the selection of goods and services which are included in the calculation of CPI is updated annually, using the results of the latest available HBS, other market research, etc. The chain linking methodology allows the change of items of the household basket on an annual basis, in order to ensure the representativeness of the items involved in the calculation of groups and subgroups of CPI.
Price collection-Outlets	The prices collection outlets are retail stores, enterprises providing services, street markets etc. which are considered representative of the branches of shops, where the households make their purchases in the 27 selected cities. The methodology allows the renewal of price collection sources, annually, in order to maintain their representativeness in the calculation of CPI. Prices are collected by employees of ELSTAT as well as by external price collectors, hired on a temporary basis. They pay a visit to the selected outlets within a specific time period of a month (monthly prices) or on a specific day of the week (weekly prices). The collected prices correspond to the prices actually faced by the consumer.
Specification-Substitution of items	All the collected items are defined by the specification, that is the particular characteristics which determine the quality, the trade show and the identity, in general, of good products (such as brand, weight, package etc), in order to avoid any price variations attributable to differences in the specification. Once a specified item (good or service) is no longer available in the market or has ceased to be important, as regards consumption, it is substituted by a newly specified item, which has taken its place in the market.

Calculation of the Consumer Price Index

The Consumer Price Index is a Laspeyres-type index and it is calculated based on December of the previous year.

Implementation of formula in five-digit level of COICOP5

Specifically, if the five-digit item h includes q price collected items, then its index in month t of year T, $R_h^{t,T}$, is given by the following formula:

$$R_h^{t,T} = R_h^{12,T-1} \left[\frac{\sum_{i=1}^q w_i^T R_i^{t,T} / R_i^{12,T-1}}{\sum_{i=1}^q w_i^T} \right],$$

where:

$R_h^{12,T-1}$ = the index of the five-digit item h, in December of year T-1.

w_i^T = the weight of the price collected item i, in year T.

$R_i^{t,T}$ = the index of the price collected item i, in month t of year T.

$R_i^{12,T-1}$ = the index of the price collected item i, in December of year T-1.

A similar methodology is followed for the calculation of indices in the upper levels (two-digit, three-digit and four-digit) of COICOP5 and the calculation of the overall CPI as well.

Publication of data The published CPI time series (reference year 2009=100.0), covers the period from January 1959 onwards. The CPI data are released each month as scheduled, in accordance with the Press Releases Calendar of ELSTAT, with the [Press Release and the tables](#).

References Further information concerning the methodology and the compilation of the CPI is available in the [Methodological Publication CPI \(2009=100.0\)](#) and the [Single Integrated Metadata Structure \(SIMS\)](#).