



## PRESS RELEASE

### JOB VACANCIES: 3rd quarter 2019

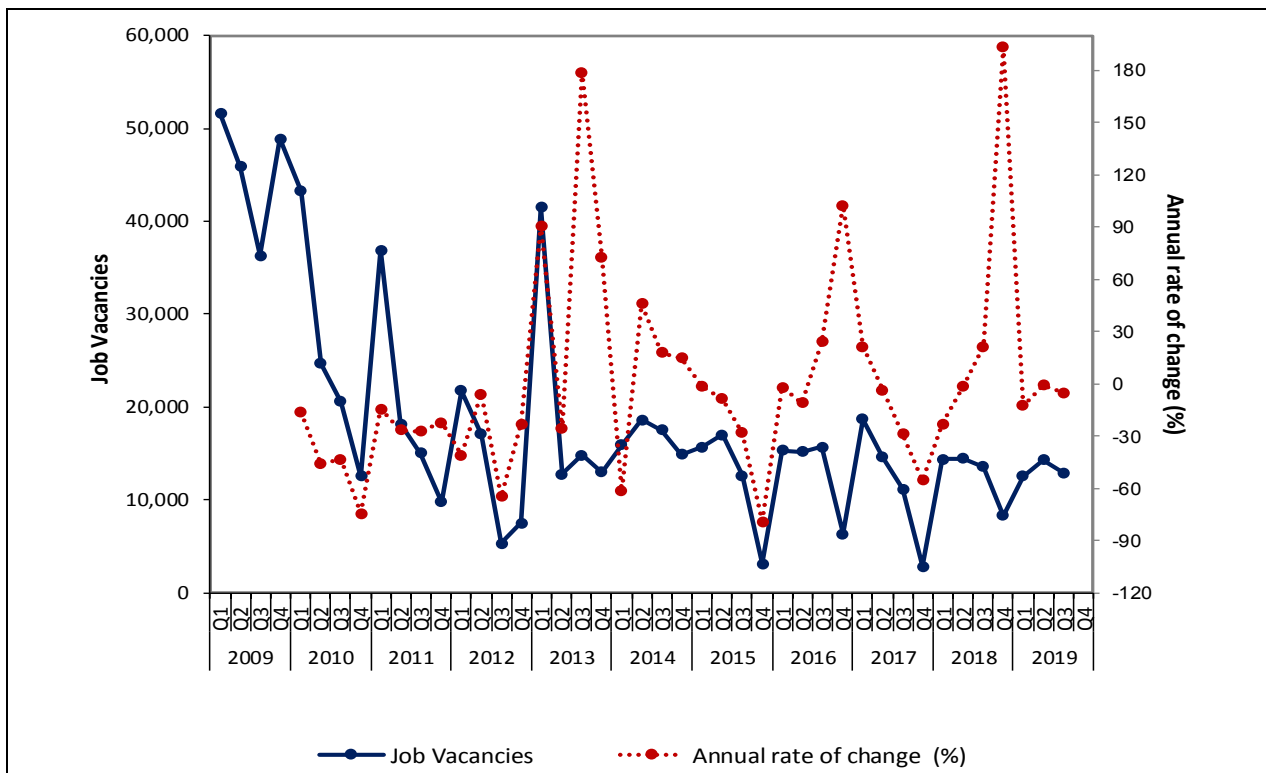
The Hellenic Statistical Authority (ELSTAT) announces the quarterly Press Release aiming at presenting data on job vacancies<sup>1</sup> for the whole economy excluding Primary Sector and Activities of Households, referring to the 3rd quarter 2019.

The number of job vacancies in the 3rd quarter 2019 has recorded a decrease of 5.1% in comparison with the 3rd quarter 2018 (12,897 and 13,584 correspondingly), while the corresponding number of job vacancies in the 3<sup>rd</sup> quarter 2018 had recorded an increase of 21.4% in comparison with the 3rd quarter 2017 (Table 1, Graph 2).

Table 1 that follows depicts analytically the evolution of the number of job vacancies from the 1<sup>st</sup> quarter 2009 to the 3rd quarter 2019.

Also, in Graph 1 that follows, the number of job vacancies and the annual change for each quarter of the period 2009-2019 are presented, while in Graph 2 the number of Job vacancies and the annual change of the 3rd quarter of the same period are depicted.

**Graph 1: Evolution of Job Vacancies<sup>1</sup> (1<sup>st</sup> quarter 2009 – 3rd quarter 2019)**



#### **Information on methodological issues**

Division of Population, Employment and Cost of Living Statistics

Section of Employment Statistics

Dimitris Vatikiotis

Tel: +30 213 135 2173

Fax: +30 213 135 2948

E-mail: [d.vatikiotis@statistics.gr](mailto:d.vatikiotis@statistics.gr)

#### **Information for data provision:**

Τηλ. 213 135 2022

e-mail: [data.dissem@statistics.gr](mailto:data.dissem@statistics.gr)

<sup>1</sup> The number of Job Vacancies refers to the Job Vacancies to be filled in immediately, that is job vacancies, which are to be filled in within a period not longer than three months and also refers to sections B-S of statistical classification of economic activities NACE Rev. 2. Job vacancies are recorded on the first day of the third month of every calendar quarter.

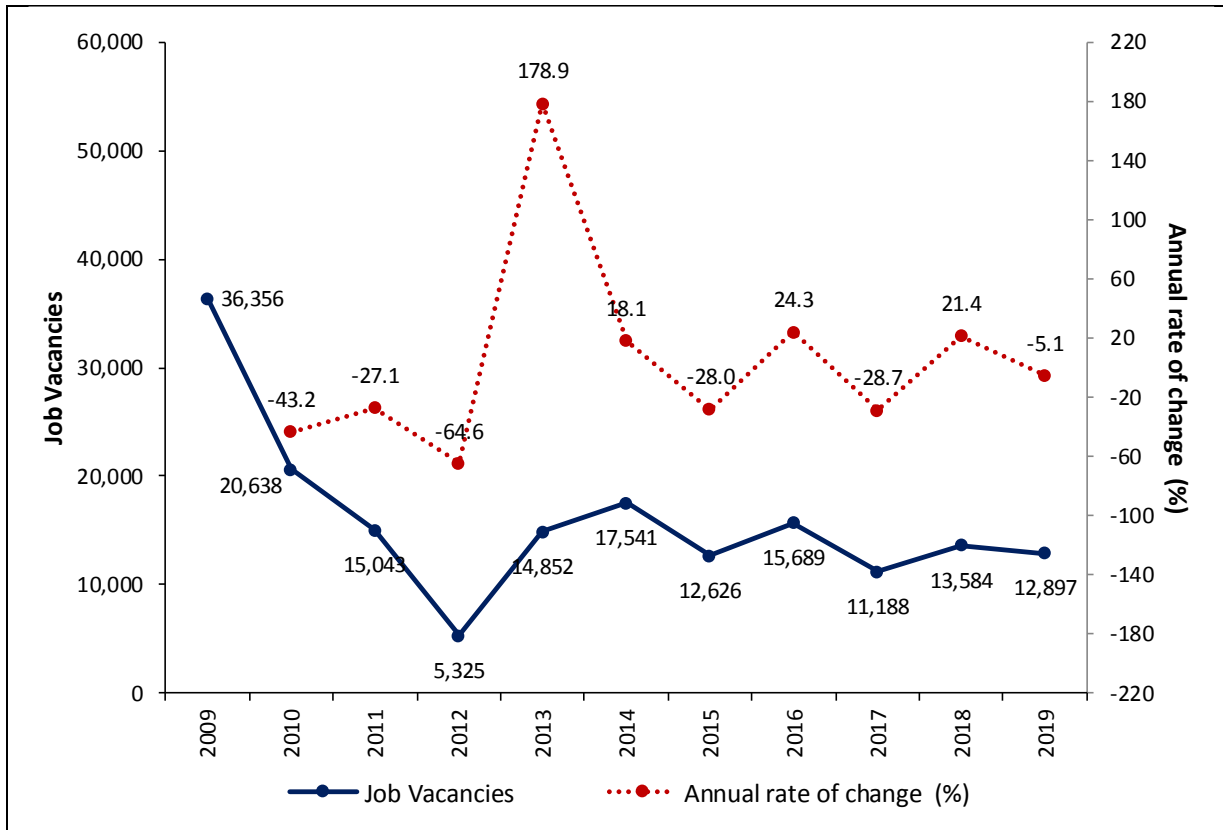
**Table 1: Evolution of job vacancies<sup>1</sup>,  
1<sup>st</sup> quarter 2009 – 3<sup>rd</sup> quarter 2019**

Not seasonally adjusted data and not adjusted for the number of the working days

| Year | Quarter | Job Vacancies to be filled in immediately | Quarterly rate of change (%) | Annual rate of change (%) |
|------|---------|---|------------------------------|---------------------------|
| 2009 | Q1      | 51,613                                    |                              |                           |
|      | Q2      | 45,886                                    | -11.1                        |                           |
|      | Q3      | 36,356                                    | -20.8                        |                           |
|      | Q4      | 48,897                                    | 34.5                         |                           |
| 2010 | Q1      | 43,242                                    | -11.6                        | -16.2                     |
|      | Q2      | 24,700                                    | -42.9                        | -46.2                     |
|      | Q3      | 20,638                                    | -16.4                        | -43.2                     |
|      | Q4      | 12,561                                    | -39.1                        | -74.3                     |
| 2011 | Q1      | 36,935                                    | 194.0                        | -14.6                     |
|      | Q2      | 18,159                                    | -50.8                        | -26.5                     |
|      | Q3      | 15,043                                    | -17.2                        | -27.1                     |
|      | Q4      | 9,775                                     | -35.0                        | -22.2                     |
| 2012 | Q1      | 21,753                                    | 122.5                        | -41.1                     |
|      | Q2      | 17,124                                    | -21.3                        | -5.7                      |
|      | Q3      | 5,325                                     | -68.9                        | -64.6                     |
|      | Q4      | 7,520                                     | 41.2                         | -23.1                     |
| 2013 | Q1      | 41,545                                    | 452.5                        | 91.0                      |
|      | Q2      | 12,747                                    | -69.3                        | -25.6                     |
|      | Q3      | 14,852                                    | 16.5                         | 178.9                     |
|      | Q4      | 13,007                                    | -12.4                        | 73.0                      |
| 2014 | Q1      | 15,921                                    | 22.4                         | -61.7                     |
|      | Q2      | 18,596                                    | 16.8                         | 45.9                      |
|      | Q3      | 17,541                                    | -5.7                         | 18.1                      |
|      | Q4      | 14,930                                    | -14.9                        | 14.8                      |
| 2015 | Q1      | 15,694                                    | 5.1                          | -1.4                      |
|      | Q2      | 17,000                                    | 8.3                          | -8.6                      |
|      | Q3      | 12,626                                    | -25.7                        | -28.0                     |
|      | Q4      | 3,119                                     | -75.3                        | -79.1                     |
| 2016 | Q1      | 15,367                                    | 392.7                        | -2.1                      |
|      | Q2      | 15,178                                    | -1.2                         | -10.7                     |
|      | Q3      | 15,689                                    | 3.4                          | 24.3                      |
|      | Q4      | 6,315                                     | -59.7                        | 102.5                     |
| 2017 | Q1      | 18,666                                    | 195.6                        | 21.5                      |
|      | Q2      | 14,630                                    | -21.6                        | -3.6                      |
|      | Q3      | 11,188                                    | -23.5                        | -28.7                     |
|      | Q4      | 2,825                                     | -74.7                        | -55.3                     |
| 2018 | Q1      | 14,351                                    | 408.0                        | -23.1                     |
|      | Q2      | 14,466                                    | 0.8                          | -1.1                      |
|      | Q3      | 13,584                                    | -6.1                         | 21.4                      |
|      | Q4      | 8,288                                     | -39.0                        | 193.4                     |
| 2019 | Q1      | 12,570                                    | 51.7                         | -12.4                     |
|      | Q2      | 14,343                                    | 14.1                         | -0.9                      |
|      | Q3      | 12,897                                    | -10.1                        | -5.1                      |
|      | Q4      |   |                              |                           |

<sup>1</sup> The number of Job Vacancies refers to the Job Vacancies *to be filled in immediately*, that is job vacancies, which are to be filled in within a period *not longer* than three months and also refers to sections B-S of statistical classification of economic activities NACE Rev. 2. Job vacancies are recorded on the first day of the third month of every calendar quarter.

Graph 2: Evolution of Job Vacancies<sup>1</sup> of 3rd quarter (2009 –2019)



<sup>1</sup> The number of Job Vacancies refers to the Job Vacancies to be filled in immediately, that is job vacancies, which are to be filled in within a period not longer than three months and also refers to sections B-S of statistical classification of economic activities NACE Rev. 2. Job vacancies are recorded on the first day of the third month of every calendar quarter

## METHODOLOGICAL NOTES

|   |  |
|---|--|
| <b>Survey on Job Vacancies</b>          | The Survey on Job Vacancies is a sampling survey conducted on a quarterly basis in a sample of enterprises. It is intended to record the number of job vacancies in the whole economy excluding Primary Sector and Activities of Households of NACE Rev. 2.  |
| <b>Purpose of the survey</b>            | The purpose of the survey is to record on a quarterly basis the job vacancies to be filled in immediately, that is job vacancies, which are to be filled in within a period <u>not longer</u> than three months.   |
| <b>Legal Framework</b>                  | Regulations (EC) No 453/2008, (EC) No 1062/2008 and (EC) No 19/2009 of the European Parliament and of the Council.   |
| <b>Geographical coverage</b>            | Greece, total.   |
| <b>Reference period</b>                 | Quarter.   |
| <b>Reference date</b>                   | Job vacancies are recorded on the 1 <sup>st</sup> day of the 3 <sup>rd</sup> month of each calendar quarter.   |
| <b>Definitions</b>                      | <p>The <b>statistical unit</b> is the enterprise employing at least one (1) employee.</p> <p><b>Job vacancy</b> means a paid post that is newly created, unoccupied, or about to become vacant, for which the employer is taking active steps and is prepared to take further steps to find a suitable candidate from outside the enterprise concerned and which the employer intends to fill either immediately or in the near future. It should be noted that job vacancies refer only to employees.</p> <p><b>A vacant post which is going to be filled by the following categories is not considered as Job Vacancy:</b></p> <ul style="list-style-type: none"><li>➤ an apprentice without remuneration coming either by the employer or through the Social Security Funds</li><li>➤ contractors which are not on the payroll list,</li><li>➤ personnel who is re-hired or returns to the enterprise after a holiday, paid or not, leave</li><li>➤ internal movement of a member of personnel inside the enterprise</li></ul> <p><b>Job Vacancies to be filled in immediately</b> are job vacancies for full or part-time employment, which are to be filled in within a period <b>not longer than three months</b>.</p> |
| <b>Statistical classifications</b>      | The European statistical classification of economic activities NACE Rev. 2 is used.  |
| <b>Coverage of NACE Rev. 2 sections</b> | B Mining and quarrying<br>C Manufacturing<br>D Electricity, gas, steam and air conditioning<br>E Water supply, sewerage, waste management and remediation activities<br>F Construction<br>G Wholesale and Retail Trade, Repair of Motor Vehicles and Motorcycles<br>H Transportation and Storage<br>I Activities Accommodation Services and Food Services<br>J Information and Communication<br>K Financial and insurance activities<br>L Real Estate<br>M Professional, scientific and technical activities<br>N Administrative and support service activities<br>O Public Administration and Defence; Compulsory Social Security<br>P Education<br>Q Human Health and Social Work Activities<br>R Arts, Entertainment and Recreation<br>S Other Service Activities   |