



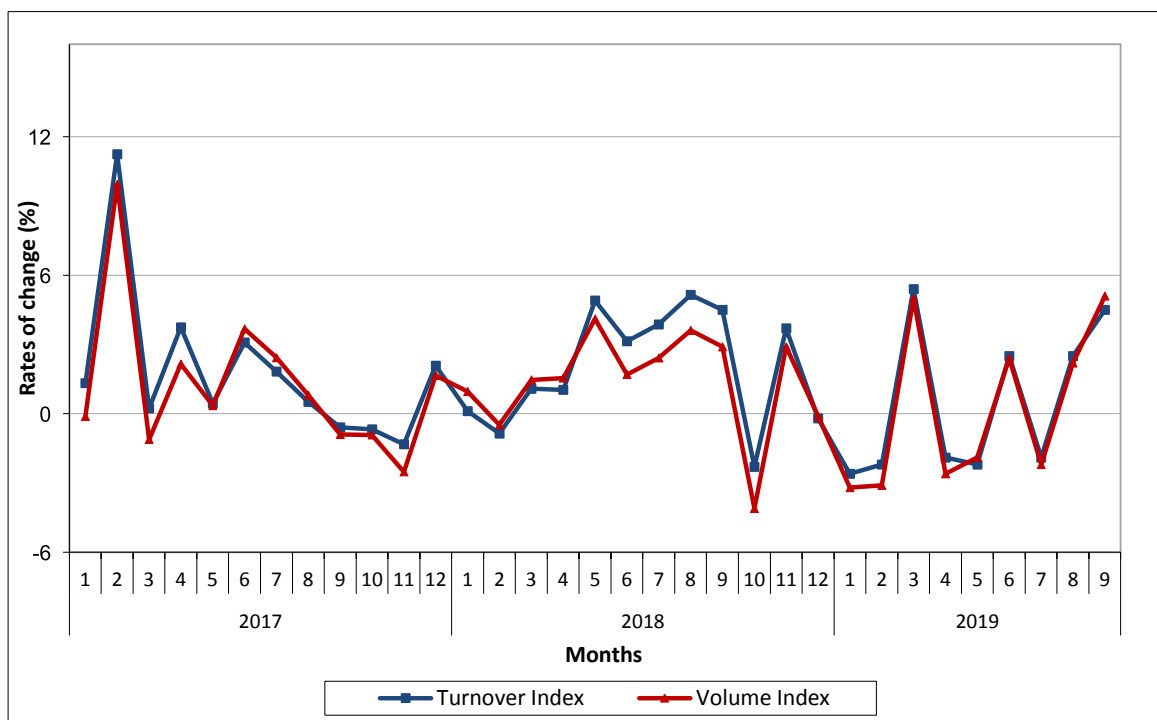
## PRESS RELEASE

### TURNOVER INDEX IN RETAIL TRADE: September 2019, y-o-y increase 4.5%

The Hellenic Statistical Authority (ELSTAT) announces the Turnover and Volume Indices in Retail Trade with base year 2015=100.0 for September 2019 according to provisional and reduced data to a typical month as follows:

- The Overall Turnover Index in Retail Trade in September 2019 increased by 4.5%, compared with the corresponding index of September 2018, while, compared with the corresponding index of August 2019, decreased by 0.5% (Tables 1, 2).
- The Overall Volume Index in retail trade (i.e. turnover in retail trade at constant prices) in September 2019, increased by 5.1%, compared with the corresponding index of September 2018, while, compared with the corresponding index of August 2019, decreased by 3.9% (Tables 1, 2).
- The seasonally adjusted Overall Turnover Index in September 2019, compared with the corresponding index of August 2019, increased by 1.1% (Table 5).
- The seasonally adjusted Overall Volume Index in September 2019, compared with the corresponding index of August 2019, increased by 1.5% (Table 5).

**Graph 1.** Evolution of annual rates of change (%) for Turnover and Volume Overall Indices in Retail Trade



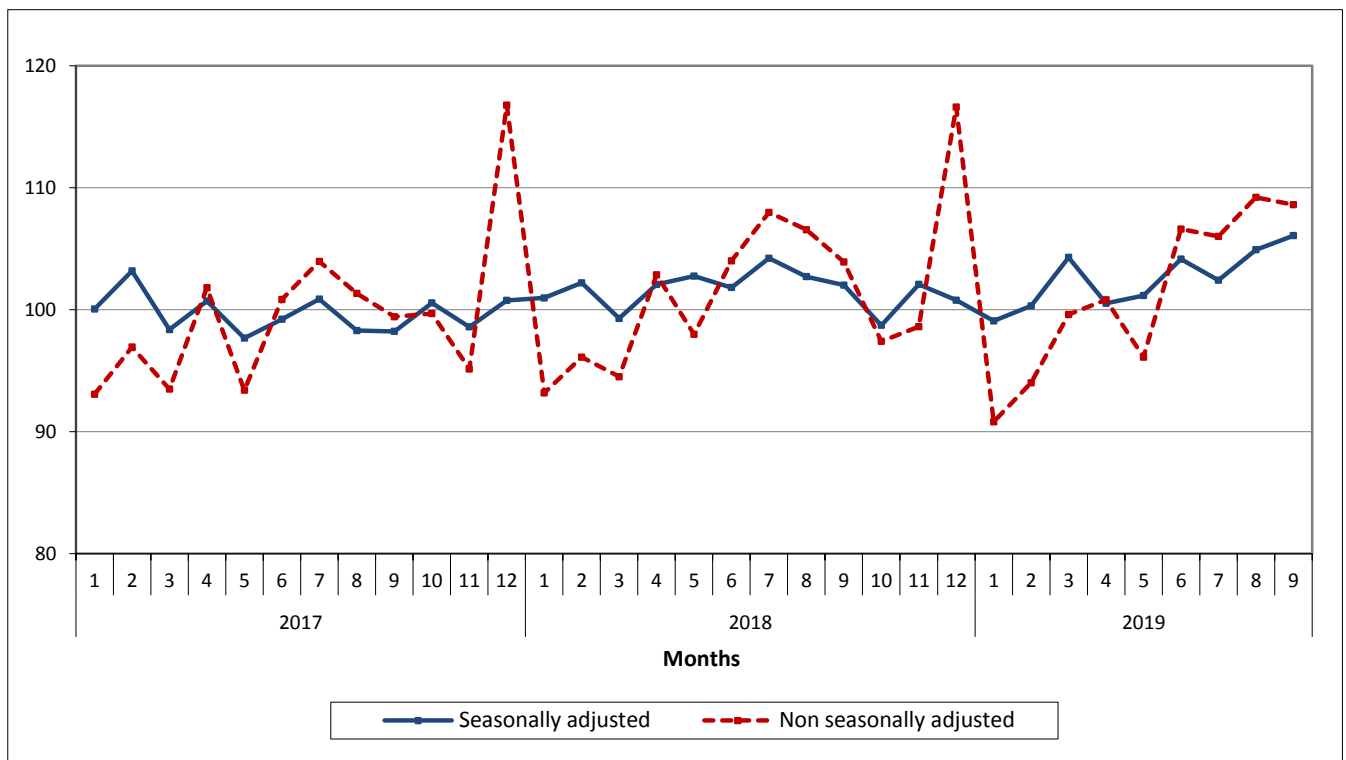
**Information for methodological issues:**

Division of Business Statistics  
Section of Trade and Services Indices  
Head of the Section: Konstantinos Thomas  
Tel: +30 213 135 2048  
Fax: +30 210 485 2714  
E-mail: [k.thomas@statistics.gr](mailto:k.thomas@statistics.gr)

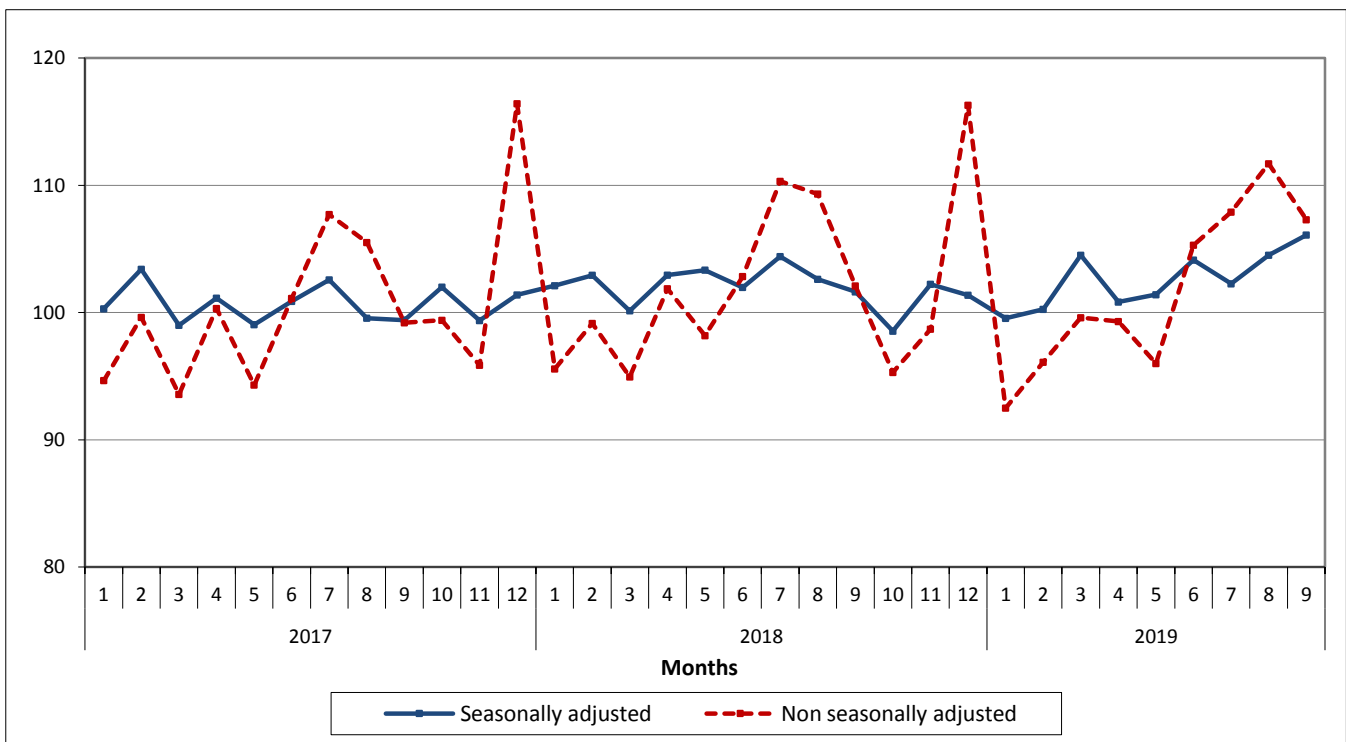
**Information for data provision:**

Tel: +30 213 135 2022. 2308. 2310  
e-mail: [data.dissem@statistics.gr](mailto:data.dissem@statistics.gr)

**Graph 2.** Evolution of the Overall Turnover Index in Retail Trade (2015=100.0)



**Graph 3.** Evolution of the Overall Volume Index in Retail Trade (2015=100.0)



It should be noted, that the timeseries of the seasonally adjusted index is recalculated every time a new observation is added and could differ from 100 for the base year, as seasonal effect is not the same each year. Therefore, the seasonally adjusted data differ from the published data of the Press Release of the previous quarter.

## 1. Annual comparison of the Turnover Index

*(Turnover at current prices)*

The 4.5% increase of the Turnover Index in September 2019 compared with the corresponding index in September 2018 is mainly due to the changes in the following store categories:

Specialized store categories	Annual rates of change %
Pharmaceutical products, cosmetics	11.5
Clothing and footwear	10.0
Books, Stationery, other goods	7.0
Supermarkets	3.0
Automotive fuel	1.2

## 2. Annual comparison of the Volume Index

*(Turnover at constant prices)*

The 5.1% increase of the Volume Index in September 2019 compared with the corresponding index in September 2018 is mainly due to the changes in the following store categories:

Specialized store categories	Annual rates of change %
Clothing and footwear	10.3
Pharmaceutical products, cosmetics	9.6
Books, Stationery, other goods	9.2
Automotive fuel	4.2
Supermarkets	3.3

**Table 1.** Annual rates of change of Turnover Index and Volume Index in Retail Trade  
(Data adjusted for working days)

Base year: 2015=100.0

Retail Trade Store Categories	Turnover Index			Volume Index		
	September	September	Annual rates of change (%)	September	September	Annual rates of change (%)
	2019*	2018		2019*	2018	
<b>Overall Index</b>	<b>108.6</b>	<b>103.9</b>	<b>4.5</b>	<b>107.3</b>	<b>102.1</b>	<b>5.1</b>
<b>Overall Index except automotive fuel</b>	109.4	104.1	5.1	109.0	103.5	5.3
<b>I. Main store categories</b>						
Food sector	109.4	107.5	1.8	109.0	106.9	2.0
Automotive fuel	105.9	104.6	1.2	97.4	93.5	4.2
Non-food sector except automotive fuel	107.8	99.5	8.3	109.7	100.8	8.8
<b>II. Specialized store categories</b>						
Supermarkets	111.7	108.4	3.0	112.9	109.3	3.3
Department stores	100.8	99.0	1.8	102.1	99.3	2.8
Automotive fuel	105.9	104.6	1.2	97.4	93.5	4.2
Food, beverages, tobacco	95.1	102.2	-6.9	93.5	100.5	-7.0
Pharmaceutical products, cosmetics	103.4	92.7	11.5	105.1	95.9	9.6
Clothing and footwear	103.0	93.6	10.0	95.3	86.4	10.3
Furniture, electrical equipment, household equipment	111.3	99.2	12.2	121.1	105.2	15.1
Books, Stationery, other goods	126.2	117.9	7.0	136.4	124.9	9.2
Retail sales not in stores	124.5	122.7	1.5	:	:	:

\*Provisional data.

: Volume Index for the "Retail sale not in stores" is not calculated.

Note: The indices and the percentage changes are published rounded up to one decimal digit.

**Table 2. Monthly rates of change of Turnover Index and Volume Index in Retail Trade**  
(Data adjusted for working days)

Base year: 2015=100.0

Retail Trade Store Categories	Turnover Index			Volume Index		
	September	August	Monthly rates of change	September	August	Monthly rates of change
	2019*	2019	(%)	2019*	2019	(%)
<b>Overall Index</b>	<b>108.6</b>	<b>109.2</b>	<b>-0.5</b>	<b>107.3</b>	<b>111.7</b>	<b>-3.9</b>
<b>Overall Index except automotive fuel</b>	109.4	109.2	0.2	109.0	113.2	-3.7
<b>I. Main store categories</b>						
Food sector	109.4	115.1	-5.0	109.0	115.2	-5.4
Automotive fuel	105.9	110.1	-3.8	97.4	99.9	-2.5
Non-food sector except automotive fuel	107.8	102.3	5.4	109.7	115.2	-4.8
<b>II. Specialized store categories</b>						
Supermarkets	111.7	117.7	-5.1	112.9	119.7	-5.7
Department stores	100.8	98.5	2.3	102.1	115.3	-11.4
Automotive fuel	105.9	110.1	-3.8	97.4	99.9	-2.5
Food, beverages, tobacco	95.1	99.2	-4.1	93.5	98.0	-4.6
Pharmaceutical products, cosmetics	103.4	101.9	1.5	105.1	103.5	1.5
Clothing and footwear	103.0	96.1	7.2	95.3	125.7	-24.2
Furniture, electrical equipment, household equipment	111.3	107.1	3.9	121.1	118.3	2.4
Books, Stationery, other goods	126.2	114.1	10.6	136.4	123.9	10.1
Retail sales not in stores	124.5	105.2	18.3	:	:	:

\*Provisional data.

: Volume Index for the "Retail sale not in stores" is not calculated.

Note: The indices and the percentage changes are published rounded up to one decimal digit.

**Table 3. Evolution of the Turnover Index in Retail Trade**  
(Data adjusted for working days)

Base year: 2015=100.0

Year and month	Overall Index		Overall Index except automotive fuel		Food sector		Automotive fuel sector		Non-food sector except automotive fuel		
	Indices	Annual rates of change (%)	Indices	Annual rates of change (%)	Indices	Annual rates of change (%)	Indices	Annual rates of change (%)	Indices	Annual rates of change (%)	
<b>2017:</b>	1	93.1	1.3	92.0	-0.5	91.8	0.9	97.6	9.8	92.3	-2.1
	2	96.9	11.2	96.4	8.7	99.4	11.8	99.2	24.2	93.0	5.1
	3	93.5	0.2	93.4	-1.6	93.9	-4.1	94.2	9.5	92.8	1.9
	4	101.8	3.7	103.0	2.2	104.3	3.6	96.6	12.8	101.6	0.5
	5	93.4	0.4	94.8	0.4	93.8	1.1	87.6	1.5	95.9	-0.5
	6	100.8	3.1	102.2	3.1	101.6	0.5	95.1	4.1	103.0	6.3
	7	103.9	1.8	105.3	2.1	103.6	0.7	98.1	1.6	107.5	3.6
	8	101.3	0.5	101.6	-0.3	105.9	-1.9	100.6	5.3	96.3	1.8
	9	99.4	-0.6	100.5	-1.3	101.3	-0.5	94.9	3.8	99.6	-2.3
	10	99.7	-0.7	99.7	-1.8	97.4	-4.6	99.9	5.7	102.7	1.7
	11	95.1	-1.3	95.2	-2.4	87.5	-6.6	95.2	4.7	104.9	2.6
	12	116.8	2.1	119.4	2.1	110.1	0.7	105.7	2.9	131.0	3.8
<b>Annual average</b>		<b>99.6</b>	<b>1.8</b>	<b>100.3</b>	<b>0.9</b>	<b>99.2</b>	<b>0.1</b>	<b>97.1</b>	<b>6.9</b>	<b>101.7</b>	<b>1.9</b>
<b>2018:</b>	1	93.2	0.1	92.0	-0.1	89.9	-2.1	99.8	2.3	94.6	2.5
	2	96.1	-0.9	96.0	-0.5	99.0	-0.4	98.0	-1.2	92.6	-0.5
	3	94.5	1.1	95.5	2.3	96.3	2.5	91.2	-3.2	94.9	2.2
	4	102.8	1.0	104.0	0.9	106.1	1.8	99.3	2.7	101.6	0.0
	5	98.0	4.9	98.7	4.2	99.5	6.0	96.0	9.5	98.0	2.2
	6	104.0	3.1	104.6	2.3	105.8	4.2	102.9	8.2	103.3	0.3
	7	108.0	3.9	108.2	2.8	107.1	3.4	108.3	10.3	109.9	2.3
	8	106.5	5.2	106.1	4.4	112.3	6.0	110.0	9.4	98.9	2.7
	9	103.9	4.5	104.1	3.6	107.5	6.1	104.6	10.2	99.5	-0.1
	10	97.4	-2.3	97.1	-2.6	95.6	-1.8	100.0	0.1	96.8	-5.7
	11	98.6	3.7	99.2	4.2	91.6	4.7	97.2	2.1	104.5	-0.4
	12	116.6	-0.2	118.7	-0.6	112.0	1.7	108.6	2.7	122.9	-6.2
<b>Annual average</b>		<b>101.6</b>	<b>2.0</b>	<b>102.0</b>	<b>1.7</b>	<b>101.9</b>	<b>2.7</b>	<b>101.3</b>	<b>4.3</b>	<b>101.5</b>	<b>-0.2</b>
<b>2019:</b>	1	90.8	-2.6	89.9	-2.3	90.4	0.6	95.3	-4.5	88.1	-6.9
	2	94.0	-2.2	93.0	-3.1	93.7	-5.4	98.8	0.8	91.0	-1.7
	3	99.6	5.4	99.3	4.0	103.8	7.8	101.4	11.2	93.9	-1.1
	4	100.8	-1.9	101.7	-2.2	103.8	-2.2	97.9	-1.4	98.2	-3.3
	5	96.1	-1.9	96.4	-2.3	96.9	-2.6	95.3	-0.7	94.6	-3.5
	6	106.6	2.5	106.9	2.2	109.7	3.7	106.0	3.0	102.7	-0.6
	7	106.0	-1.9	106.4	-1.7	106.6	-0.5	105.1	-3.0	104.6	-4.8
	8	109.2	2.5	109.2	2.9	115.1	2.5	110.1	0.1	102.3	3.4
	*9	108.6	4.5	109.4	5.1	109.4	1.8	105.9	1.2	107.8	8.3

\*Provisional data.

Note: The indices and the percentage changes are published rounded up to one decimal digit.

**Table 4.** Evolution of the Volume Index in Retail Trade  
(Data adjusted for working days)

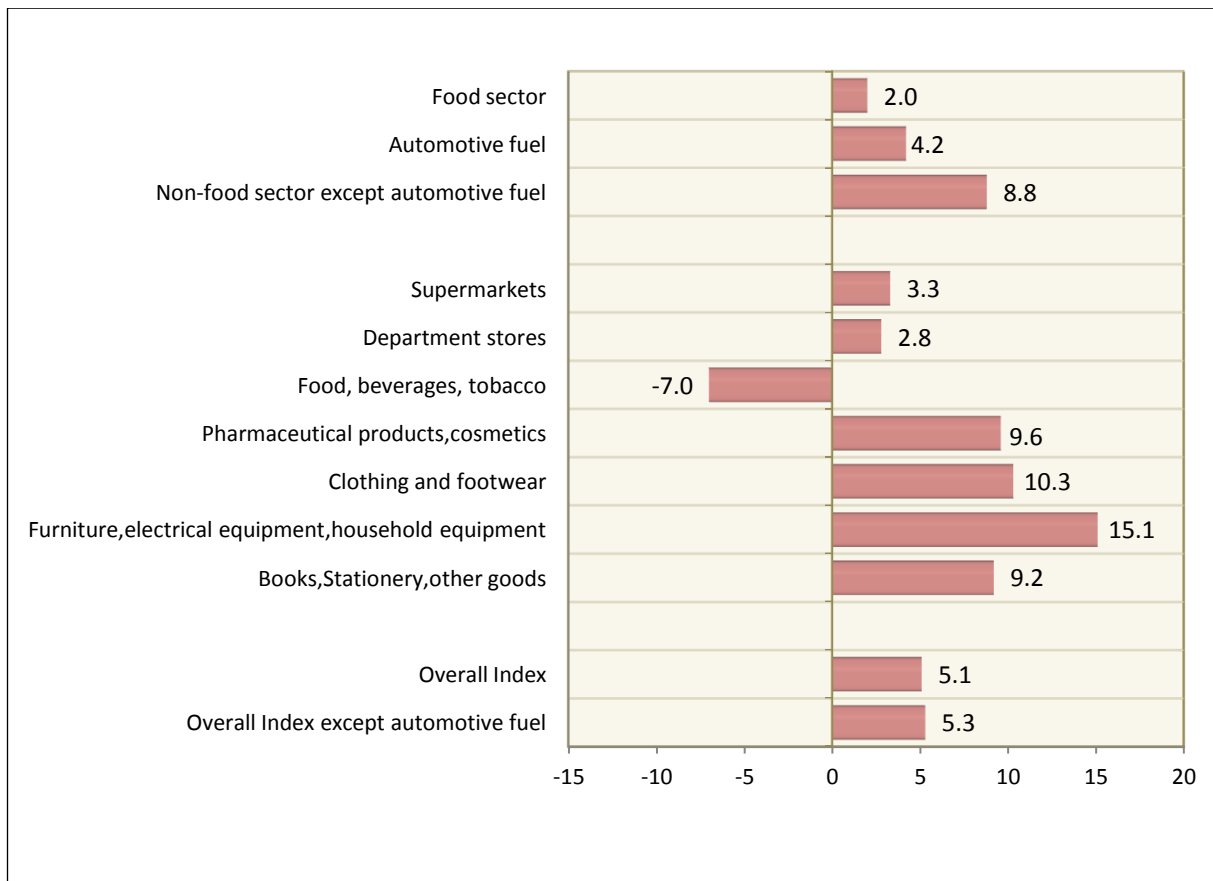
Base year: 2015=100.0

Year and month	Overall Index		Overall Index except automotive fuel		Food sector		Automotive fuel sector		Non-food sector except automotive fuel		
	Indices	Annual rates of change (%)	Indices	Annual rates of change (%)	Indices	Annual rates of change (%)	Indices	Annual rate of change (%)	Indices	Annual rates of change (%)	
<b>2017:</b>	1	94.7	-0.1	94.3	-0.5	91.5	0.2	92.8	-4.3	99.2	-0.5
	2	99.6	9.9	100.0	9.4	99.1	10.6	94.3	5.1	102.8	8.9
	3	93.6	-1.1	93.9	-1.5	93.8	-5.0	90.5	-4.7	94.9	4.4
	4	100.3	2.2	101.9	1.9	103.7	2.0	92.3	-0.1	100.6	2.9
	5	94.3	0.4	96.1	1.3	94.3	0.8	85.3	-6.5	99.3	2.7
	6	101.1	3.7	102.6	4.2	102.8	0.9	94.3	-0.1	103.1	9.6
	7	107.7	2.4	109.6	3.2	104.6	1.3	98.2	-2.5	117.6	6.2
	8	105.5	0.8	106.4	0.7	106.6	-1.3	99.5	-1.1	108.0	4.6
	9	99.2	-0.9	100.5	-0.9	101.7	-0.9	92.8	-2.5	100.2	0.3
	10	99.4	-0.9	99.7	-1.5	98.1	-4.8	97.5	0.4	102.7	3.9
	11	95.9	-2.5	96.5	-2.9	87.9	-7.6	91.4	-2.6	108.7	3.7
	12	116.4	1.7	119.6	2.2	110.8	-0.1	101.2	-2.2	132.1	6.2
<b>Annual average</b>		<b>100.6</b>	<b>1.2</b>	<b>101.8</b>	<b>1.3</b>	<b>99.6</b>	<b>-0.4</b>	<b>94.2</b>	<b>-1.8</b>	<b>105.8</b>	<b>4.4</b>
<b>2018:</b>	1	95.6	1.0	95.2	0.9	89.9	-1.7	94.8	2.2	104.0	4.8
	2	99.2	-0.5	99.9	-0.1	99.0	-0.1	93.3	-1.0	103.3	0.5
	3	94.9	1.5	96.5	2.8	96.4	2.8	87.4	-3.4	98.4	3.7
	4	101.9	1.5	103.6	1.7	106.3	2.5	93.4	1.3	101.8	1.2
	5	98.2	4.1	100.0	4.1	99.5	5.5	87.5	2.6	102.2	2.9
	6	102.8	1.7	104.6	1.9	106.0	3.1	92.2	-2.2	104.4	1.2
	7	110.3	2.4	112.3	2.5	106.9	2.2	97.1	-1.1	121.9	3.7
	8	109.3	3.6	110.6	3.9	112.2	5.3	98.6	-1.0	111.1	2.8
	9	102.1	2.9	103.5	3.0	106.9	5.1	93.5	0.8	100.8	0.6
	10	95.3	-4.1	96.1	-3.6	94.8	-3.4	88.5	-9.2	97.3	-5.3
	11	98.7	2.9	100.3	3.9	91.7	4.3	89.5	-2.1	109.9	1.1
	12	116.3	-0.1	118.9	-0.6	112.5	1.5	105.1	3.9	124.7	-5.6
<b>Annual average</b>		<b>102.1</b>	<b>1.5</b>	<b>103.4</b>	<b>1.6</b>	<b>101.8</b>	<b>2.2</b>	<b>93.4</b>	<b>-0.8</b>	<b>106.6</b>	<b>0.8</b>
<b>2019:</b>	1	92.5	-3.2	91.9	-3.5	89.3	-0.7	93.8	-1.1	97.8	-6.0
	2	96.1	-3.1	95.6	-4.3	92.3	-6.8	96.1	3.0	103.0	-0.3
	3	99.6	5.0	100.0	3.6	102.8	6.6	95.3	9.0	99.2	0.8
	4	99.3	-2.6	101.0	-2.5	103.0	-3.1	88.6	-5.1	99.8	-2.0
	5	96.0	-2.2	97.5	-2.5	96.7	-2.8	85.4	-2.4	99.6	-2.5
	6	105.3	2.4	106.5	1.8	109.2	3.0	97.2	5.4	104.8	0.4
	7	107.9	-2.2	109.7	-2.3	106.6	-0.3	95.7	-1.4	116.5	-4.4
	8	111.7	2.2	113.2	2.4	115.2	2.7	99.9	1.3	115.2	3.7
	*9	107.3	5.1	109.0	5.3	109.0	2.0	97.4	4.2	109.7	8.8

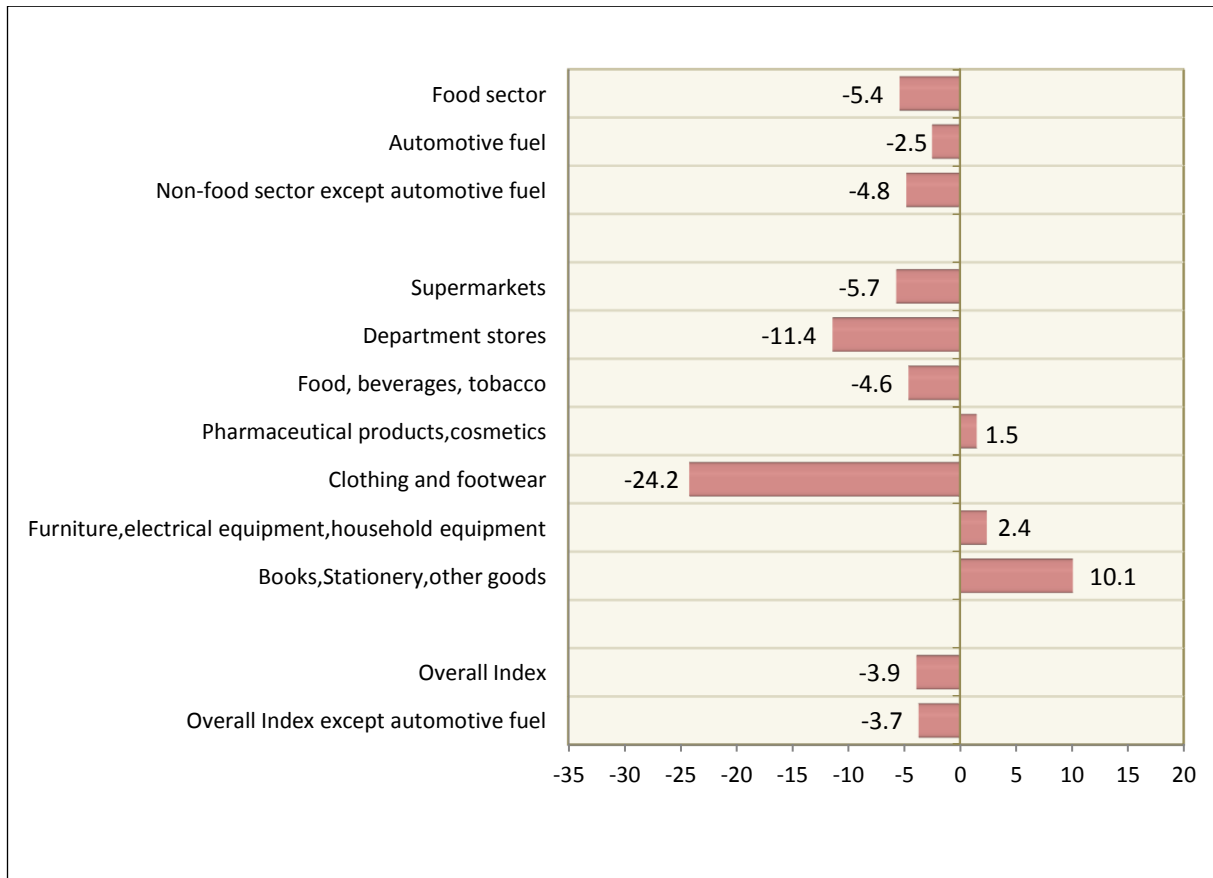
\*Provisional data.

Note: The indices and the percentage changes are published rounded up to one decimal digit.

**Graph 4.** Annual rates of change (%) of the Volume Indices in Retail Trade for September 2019/2018



**Graph 5.** Monthly rates of change (%) of the Volume Indices in Retail Trade for September 2019/August 2019





**Table 5.** Monthly rates of change of seasonally adjusted Turnover and Volume Index in Retail Trade

Base year: 2015=100.0

Retail Trade Store Categories	Turnover Index			Volume Index		
	September	August	Monthly rates of change	September	August	Monthly rates of change
	2019	2019	(%)	2019	2019	(%)
<b>Overall Index</b>	<b>106.1</b>	<b>104.9</b>	<b>1.1</b>	<b>106.1</b>	<b>104.5</b>	<b>1.5</b>
<b>Overall Index except automotive fuel</b>	106.0	105.0	1.0	106.9	105.5	1.3
<b>I. Main store categories</b>						
Food sector	104.6	104.6	0.0	104.5	104.5	0.0
Automotive fuel	105.0	104.5	0.5	97.3	96.1	1.3
Non-food sector except automotive fuel	106.5	105.0	1.5	110.5	109.2	1.2
<b>II. Specialized store categories</b>						
Supermarkets	107.4	107.8	-0.3	108.8	109.4	-0.5
Department stores	89.2	88.4	1.0	98.6	96.3	2.4
Automotive fuel	105.0	104.5	0.5	97.3	96.1	1.3
Food, beverages, tobacco	89.3	86.8	2.8	88.0	85.6	2.8
Pharmaceutical products, cosmetics	102.7	101.2	1.5	104.4	103.2	1.1
Clothing and footwear	110.3	105.5	4.5	112.8	109.9	2.7
Furniture, electrical equipment, household equipment	110.0	109.2	0.7	120.4	119.3	0.9
Books, Stationery, other goods	119.2	119.2	0.0	129.1	128.9	0.1
Retail sales not in stores	127.0	111.4	14.0	:	:	:

: Volume Index for the "Retail sale not in stores" is not calculated.

*Note: The indices and the percentage changes are published rounded up to one decimal digit.*

**Table 6.** Monthly evolution of the seasonally adjusted Turnover Index in Retail Trade

**Base year: 2015=100.0**

Year and month	Overall Index		Overall Index except automotive fuel		Food sector		Automotive fuel sector		Non-food sector except automotive fuel		
	Indices	Monthly rates of change (%)	Indices	Monthly rates of change (%)	Indices	Monthly rates of change (%)	Indices	Monthly rates of change (%)	Indices	Monthly rates of change (%)	
<b>2017:</b>	1	100.0	1.6	100.3	1.1	100.8	2.0	98.3	2.0	99.9	0.3
	2	103.2	3.1	103.1	2.8	104.2	3.4	102.0	3.8	102.2	2.2
	3	98.4	-4.7	98.7	-4.3	97.0	-7.0	97.5	-4.4	100.8	-1.3
	4	100.7	2.4	101.1	2.4	100.9	4.1	98.5	1.1	101.4	0.6
	5	97.7	-3.0	99.1	-2.0	98.1	-2.8	92.9	-5.7	100.2	-1.2
	6	99.2	1.6	100.6	1.4	98.4	0.3	94.0	1.2	103.1	2.9
	7	100.9	1.7	101.6	1.0	100.4	2.0	96.0	2.2	102.5	-0.6
	8	98.3	-2.6	99.2	-2.4	97.5	-2.8	95.5	-0.6	100.9	-1.6
	9	98.2	-0.1	99.2	0.0	98.5	1.1	95.0	-0.5	99.8	-1.1
	10	100.6	2.4	101.1	1.9	99.7	1.2	99.2	4.4	103.2	3.4
	11	98.6	-2.0	99.1	-2.0	96.8	-3.0	97.5	-1.8	102.5	-0.7
	12	100.8	2.2	101.5	2.5	99.9	3.3	99.4	2.0	103.9	1.4
<b>Annual average</b>		<b>99.6</b>		<b>100.3</b>		<b>99.3</b>		<b>97.1</b>		<b>101.6</b>	
<b>2018:</b>	1	101.0	0.2	101.4	-0.2	99.6	-0.3	101.1	1.7	103.5	-0.4
	2	102.2	1.2	102.7	1.3	103.7	4.1	100.3	-0.8	101.8	-1.7
	3	99.3	-2.9	100.7	-2.0	98.9	-4.6	94.7	-5.6	102.6	0.8
	4	102.1	2.8	102.5	1.8	102.7	3.8	101.3	7.0	102.2	-0.4
	5	102.7	0.7	103.4	0.9	103.8	1.1	101.6	0.3	102.9	0.7
	6	101.8	-0.9	102.1	-1.2	101.6	-2.1	101.4	-0.2	102.7	-0.2
	7	104.2	2.3	103.9	1.7	103.2	1.5	105.4	3.9	104.6	1.9
	8	102.7	-1.4	102.5	-1.3	102.6	-0.6	104.1	-1.2	102.3	-2.2
	9	102.0	-0.7	101.8	-0.6	103.4	0.8	104.0	-0.1	99.2	-3.0
	10	98.7	-3.2	99.5	-2.3	99.0	-4.3	99.6	-4.2	97.7	-1.6
	11	102.1	3.4	102.7	3.2	101.8	2.8	99.7	0.1	101.4	3.8
	12	100.8	-1.3	101.0	-1.7	101.8	0.0	102.5	2.8	98.1	-3.3
<b>Annual average</b>		<b>101.5</b>		<b>101.9</b>		<b>101.6</b>		<b>101.0</b>		<b>101.6</b>	
<b>2019:</b>	1	99.1	-1.7	100.2	-0.7	100.9	-0.9	97.4	-5.0	97.4	-0.7
	2	100.3	1.2	100.4	0.1	99.2	-1.7	101.1	3.8	100.3	3.0
	3	104.3	4.0	103.8	3.4	105.6	6.4	104.7	3.6	101.3	1.1
	4	100.5	-3.6	101.1	-2.6	101.0	-4.3	100.2	-4.3	99.5	-1.8
	5	101.2	0.6	101.6	0.5	101.5	0.4	100.8	0.6	100.0	0.5
	6	104.1	2.9	103.9	2.3	104.7	3.1	104.4	3.6	102.1	2.2
	7	102.4	-1.7	102.5	-1.3	102.8	-1.8	102.6	-1.8	100.2	-1.9
	8	104.9	2.4	105.0	2.4	104.6	1.8	104.5	1.9	105.0	4.8
	9	106.1	1.1	106.0	1.0	104.6	0.0	105.0	0.5	106.5	1.5

Note: The indices and the percentage changes are published rounded up to one decimal digit.

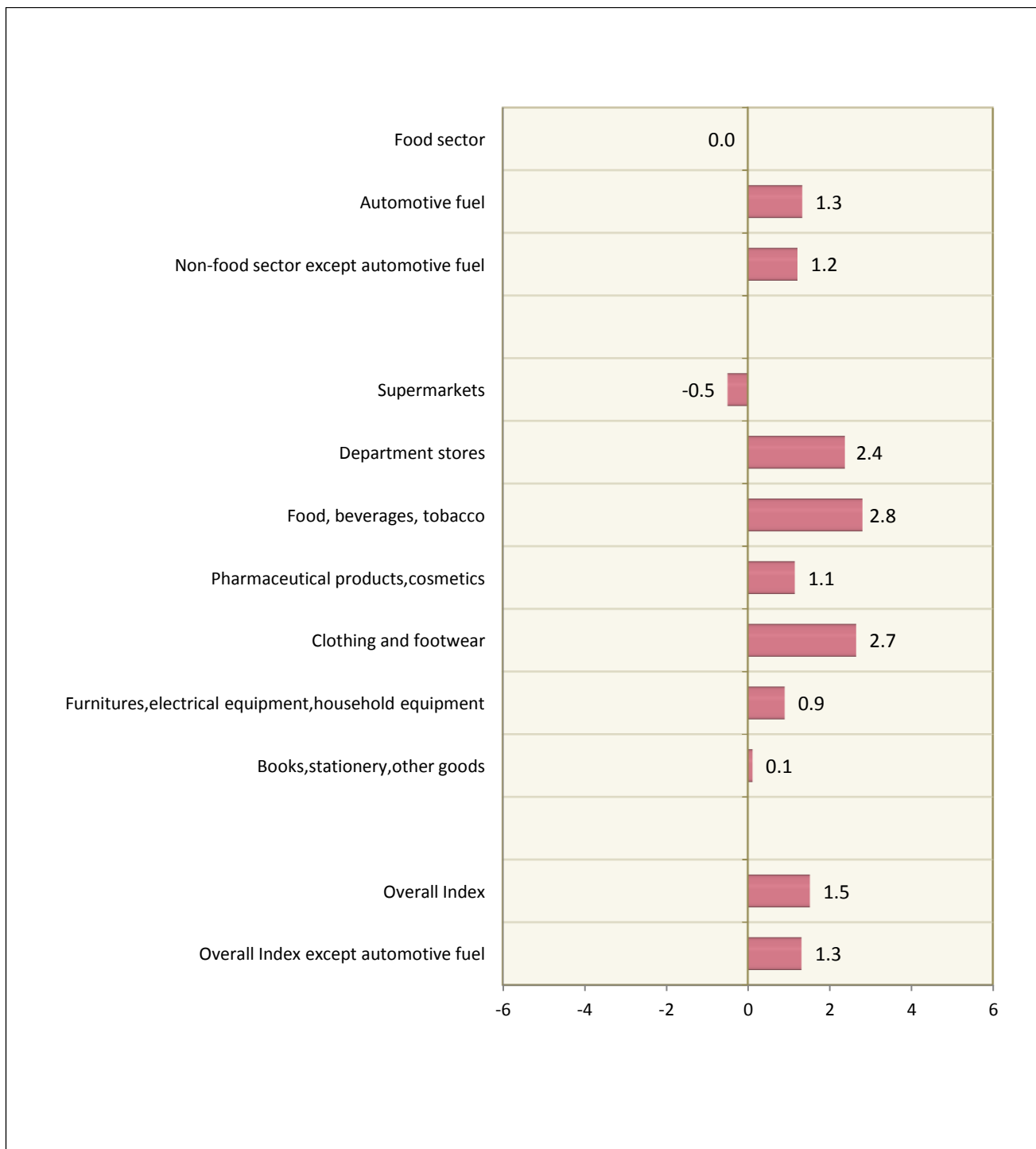
**Table 7.** Monthly evolution of the seasonally adjusted Volume Index in Retail Trade

Base year: 2015=100.0

Year and month	Overall Index		Overall Index except automotive fuel		Food sector		Automotive fuel sector		Non-food sector except automotive fuel	
	Indices	Monthly rates of change (%)	Indices	Monthly rates of change (%)	Indices	Monthly rates of change (%)	Indices	Monthly rates of change (%)	Indices	Monthly rates of change (%)
<b>2017:</b>										
1	100.3	0.8	101.3	1.0	100.9	-0.1	92.5	-3.2	102.5	0.8
2	103.4	3.1	104.4	3.0	102.6	1.7	96.0	3.8	105.9	3.3
3	99.0	-4.3	99.9	-4.3	98.9	-3.6	93.4	-2.7	104.4	-1.5
4	101.1	2.2	102.1	2.2	100.0	1.1	95.0	1.7	104.8	0.5
5	99.1	-2.1	100.6	-1.4	98.7	-1.2	91.8	-3.4	104.7	-0.2
6	100.9	1.8	102.3	1.7	99.7	1.0	94.4	2.9	107.0	2.2
7	102.6	1.7	103.5	1.1	100.1	0.5	96.8	2.6	105.9	-1.0
8	99.6	-2.9	100.7	-2.7	99.0	-1.2	95.0	-1.9	105.9	0.0
9	99.4	-0.1	100.7	0.0	99.0	0.0	93.3	-1.7	105.4	-0.5
10	102.0	2.6	102.9	2.2	99.3	0.3	97.3	4.2	108.1	2.5
11	99.4	-2.6	100.4	-2.5	97.5	-1.8	93.1	-4.2	106.4	-1.6
12	101.4	2.0	103.0	2.6	99.7	2.3	93.3	0.2	108.8	2.3
<b>Annual average</b>	<b>100.7</b>		<b>101.8</b>		<b>99.6</b>		<b>94.3</b>		<b>105.8</b>	
<b>2018:</b>										
1	102.1	0.7	103.5	0.5	100.2	0.5	94.6	1.4	108.7	-0.1
2	102.9	0.8	104.5	1.0	103.0	2.8	94.1	-0.6	106.2	-2.3
3	100.1	-2.7	102.1	-2.3	100.8	-2.1	90.2	-4.1	107.1	0.8
4	102.9	2.8	104.1	1.9	102.9	2.0	96.2	6.7	107.1	0.0
5	103.3	0.4	104.8	0.7	103.0	0.1	94.4	-1.9	107.8	0.7
6	102.0	-1.3	103.3	-1.4	102.4	-0.6	92.2	-2.3	106.6	-1.1
7	104.4	2.4	105.2	1.9	103.0	0.6	95.6	3.6	108.8	2.1
8	102.6	-1.7	103.7	-1.4	102.3	-0.7	94.3	-1.3	106.7	-2.0
9	101.6	-1.0	102.7	-1.0	102.2	0.0	93.8	-0.5	105.0	-1.6
10	98.5	-3.0	100.4	-2.2	99.4	-2.8	89.2	-4.9	104.3	-0.7
11	102.2	3.7	104.0	3.6	100.9	1.5	91.6	2.7	106.9	2.5
12	101.4	-0.8	102.5	-1.4	100.4	-0.5	96.9	5.8	104.6	-2.1
<b>Annual average</b>	<b>102.0</b>		<b>103.4</b>		<b>101.7</b>		<b>93.6</b>		<b>106.6</b>	
<b>2019:</b>										
1	99.6	-1.8	101.1	-1.4	100.4	0.1	93.6	-3.4	104.5	0.0
2	100.3	0.7	101.0	0.0	99.5	-0.9	96.1	2.7	106.2	1.6
3	104.5	4.2	105.1	4.0	102.9	3.4	97.4	1.3	107.2	1.0
4	100.8	-3.5	102.2	-2.7	101.3	-1.5	91.7	-5.9	106.0	-1.1
5	101.4	0.6	102.7	0.4	101.8	0.5	92.2	0.6	106.4	0.3
6	104.1	2.7	104.8	2.1	103.2	1.3	97.0	5.2	107.7	1.2
7	102.3	-1.8	103.2	-1.6	103.3	0.1	94.6	-2.5	106.4	-1.2
8	104.5	2.2	105.5	2.3	104.5	1.1	96.1	1.6	109.2	2.6
9	106.1	1.5	106.9	1.3	104.5	0.0	97.3	1.3	110.5	1.2

Note: The indices and the percentage changes are published rounded up to one decimal digit.

**Graph 6.** Monthly rates of change (%) of the seasonally adjusted Volume Indices in Retail Trade for September 2019/ August 2019



<b>Generally</b>	The Retail Trade Turnover Index is a monthly index, which was released in 2005 for the first time, with base year (b.y.) the year 2005=100.0. This index is a continuation of the Retail Sales Value Index, which had been compiled since 1963.
<b>Purpose of the index – definitions</b>	The purpose of the index is to depict the evolution of the goods and services market. Turnover comprises the total amounts invoiced by the enterprise during the reference period which correspond to the resale of goods without any further transformation. The data collected each month refers to the actual sales (both retail and wholesale) excluding VAT but including other duties and taxes on the goods.
<b>Legal Framework</b>	The compilation of the Retail Trade Turnover Index is governed by Council Regulation (EC) No.1165/98 of 19 <sup>th</sup> May 1998 concerning “Short Term Statistics” and by Regulation (EC) No.1893/2006 of the European Parliament and of the Council of 20 <sup>th</sup> December 2006, establishing the statistical classification of economic activities NACE Rev. 2.
<b>Reference period</b>	Month.
<b>Base year</b>	2015=100.0.
<b>Revision</b>	Pursuant to the provisions of the Council Regulation No 1165/98 concerning “Short Term Statistics”, the index is revised every five (5) years in years ending in 0 or 5. The purpose of the revision is to adapt the index to the changes in the structure of retail trade.
<b>Statistical classification</b>	The NACE Rev.2 statistical classification of economic activities is used in conformity with Regulation (EC) No.1893/2006 of the European Parliament and of the Council.
<b>Geographical coverage</b>	The indices cover the whole of the country with data coming from 72 Regional Units.
<b>Coverage of economic activities</b>	The index covers the codes from 4711 to 4799 of the division 47 of NACE Rev 2 statistical classification of economic activities.
<b>Statistical survey</b>	The index includes 38,444 retail trade enterprises, with an annual turnover (in year 2015) equal or greater than 140,000€, from which a random representative sample of 1,674 enterprises was therefore selected and surveyed.
<b>Volume Index</b>	Since 2005, a parallel calculation of the retail trade volume index is introduced, for measuring the volume changes in retail trade.
<b>Calculating the indices</b>	<p>The turnover index is calculated by applying the chaining method. Firstly the moving based index is calculated by comparing the estimated turnover value for the current month with the corresponding value of the previous month. Afterwards, the fixed base index for the current month is calculated by multiplying the moving-based index by the fixed base index of the previous month.</p> <p>The comparability of the indices is achieved by reducing them to indices of a typical month of equal duration. Multiplying the estimated turnover values by a specific correcting coefficient that results, by dividing the mean monthly number of working days in the current year, by the number of the regular working days of the surveyed month.</p> <p>The Volume Index (since September 2018) is calculated by deflating the Retail Trade Turnover Index, with the use of the Harmonized Index of Consumer Prices at Constant Tax rates (HICP-CT) as a deflator.</p>
<b>Seasonal Adjustment</b>	Seasonal adjustment is the procedure followed to remove the impact of seasonality on the timeseries (that is eliminating the monthly effects, e.g: the beginning of the school year, holidays, tourist period, etc) in order to improve the comparability over time. The seasonal adjustment is performed with the application of TRAMO-SEATS method with the use of JDemetra+ 2.0.0. The whole series with seasonally adjusted indices is recalculated every time a new observation is added into the timeseries.
<b>Compiled index series</b>	Due to the implementation of the classification NACE Rev 2, parallel timeseries for the indices including and not including the automotive fuels are provided. These timeseries data are also compiled seasonally adjusted.
<b>Publication of data</b>	Timeseries of Retail Trade Turnover and Volume Indices (b.y. 2015=100.0) are released monthly since September 2018, with retrospective data from 2000, into the following categories of economic activity classes: <p><b>Supermarkets</b> Non-specialized stores with food, beverages or tobacco predominating.</p>

**Department stores**

Other retail sale in non-specialized stores.

**Food, beverages, tobacco**

Fruit and vegetables, meat products. Fishes, crustaceans and molluscs, bread, cakes, flour confectionery and sugar confectionery. Beverages, tobacco products, other retail sale of food in specialized stores.

**Automotive fuel**

Automotive fuel in specialized stores.

**Pharmaceutical products. Cosmetics**

Dispensing chemist, medical and orthopaedic goods, cosmetic and toilet articles in specialized stores.

**Clothing and footwear**

Textiles, Clothing, footwear and leather goods in specialized stores.

**Furniture, electrical equipment, household equipment**

Furniture, lighting equipment, audio and video equipment, hardware, paints and glass, electrical household appliances and other household articles, music and video recordings in specialized stores.

**Books, stationery and other goods**

Books, newspapers and stationery, computers, peripheral units and software, telecommunications equipment, carpets, rugs, wall and floor coverings, sporting equipment, games and toys, flowers, plants, seeds, fertilisers, pet animals and pet food, watches and jewellery, other retail sale of new goods in specialized stores.

**Retail sale not in stores**

Retail sale via mail order houses, via Internet, via stalls and markets of other goods and other retail sale not in stores, stalls or markets.

**Food sector**

Supermarkets, Food, beverages, tobacco

**References**

More information on the methodology concerning the compilation and calculation of the indices and for the timeseries is available on ELSTAT website:

<http://www.statistics.gr/en/statistics/-/publication/DKT39/>