



HELLENIC REPUBLIC
HELLENIC STATISTICAL AUTHORITY

Piraeus, 29 November 2019

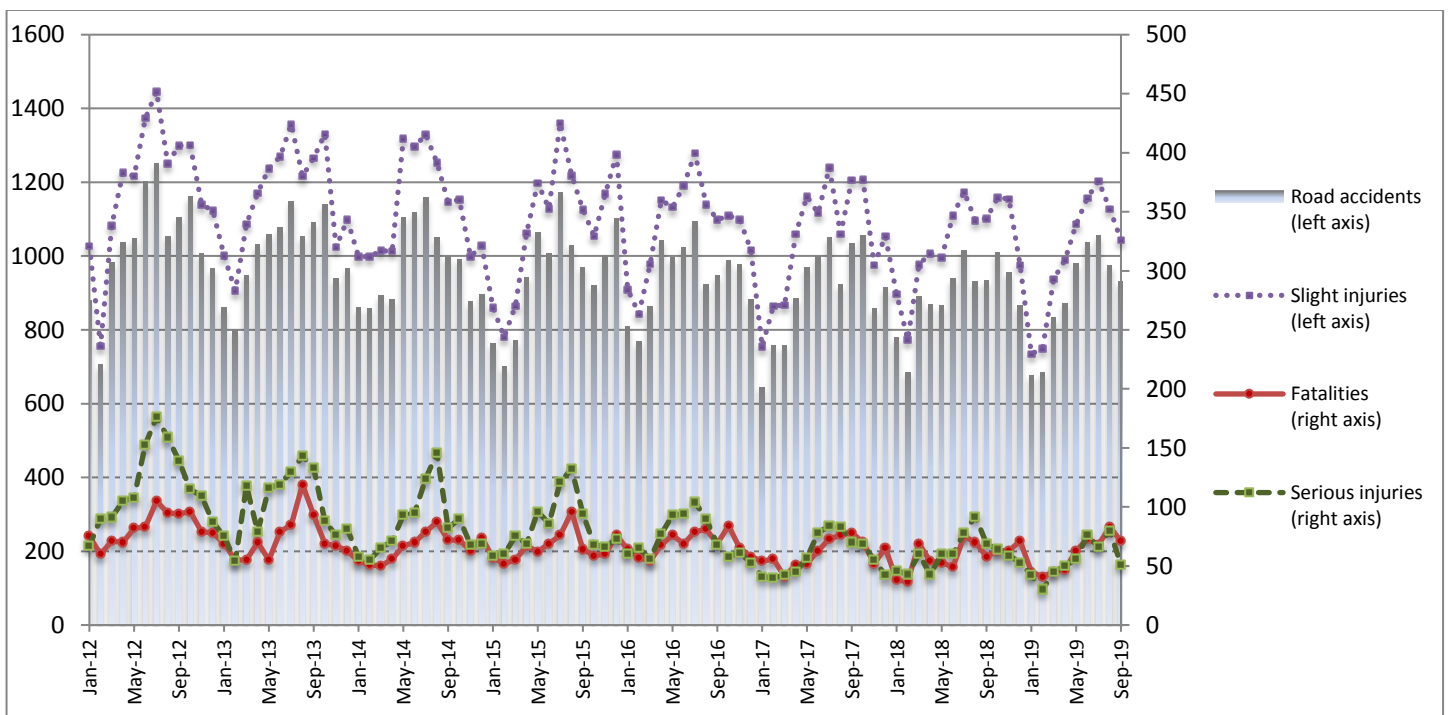
PRESS RELEASE

ROAD TRAFFIC ACCIDENTS: September 2019

The Hellenic Statistical Authority (ELSTAT) announces provisional¹ data on Road Traffic Accidents for September 2019. In particular, the road traffic accidents which occurred in Greece, resulting in death or injury, decreased by 0.4% in comparison with the corresponding month of 2018 (930 road accidents in September 2019, against 934 road accidents in September 2018).

The casualties of the injury-causing accidents that occurred in September 2019 were as follows: 71 deaths, 51 serious injuries and 1,044 slight injuries. In contrast, in September 2018 the corresponding figures were: 58 deaths, 69 serious injuries and 1,102 slight injuries. Therefore, road accident casualties in September 2019 increased by 22.4% for deaths, decreased by 26.1% for serious injuries and decreased by 5.3% for slight injuries.

**Graph 1: Road traffic accidents and casualties,
January 2012 - September 2019**



Provisional data for the period January 2019 - September 2019

Information on methodological issues:
Sectoral Statistics Division
Justice Statistics Section
Dimitra Athanasopoulou
Tel: +30 213 135 2135
Fax : +30 213 135 2764
e-mail: justistat@statistics.gr

Information for data provision:
Tel: 213 135 2022, 2308, 2310
e-mail: data.dissem@statistics.gr

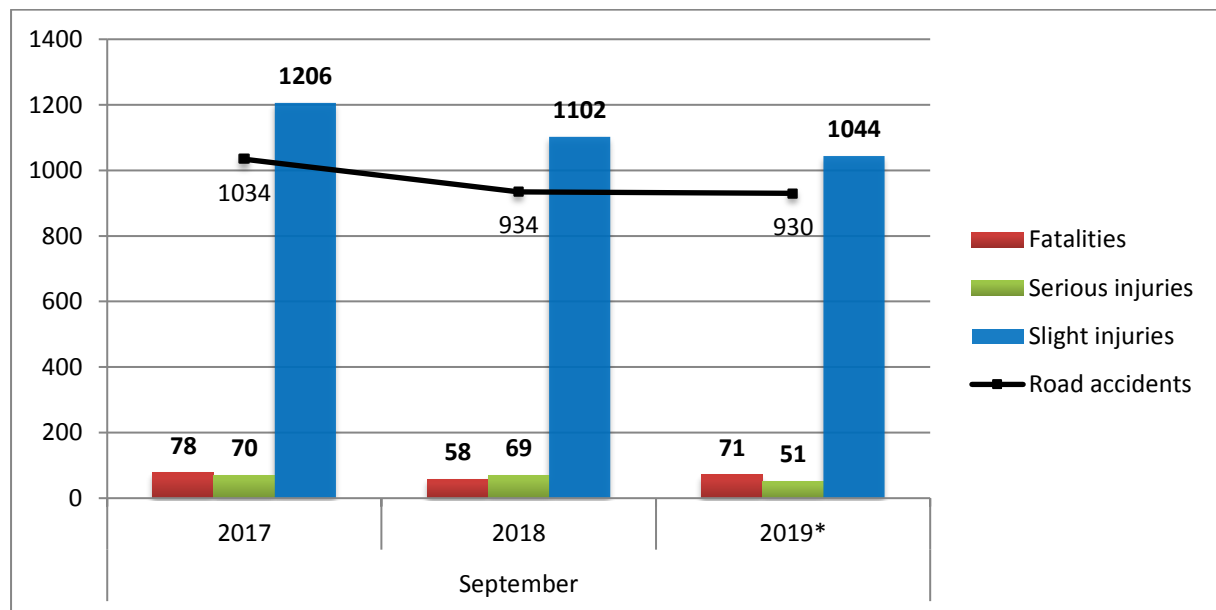
¹ Data for the reference year are provisional until the finalisation of the annual data, which become final 10 months after the end of the reference year. During these 10 months the provisional data are updated on the basis of the data of the Road Accident Forms which are transmitted to ELSTAT by Police Authorities.

Table 1: Road traffic accidents and casualties, September 2017 - 2019*

	September				
	2017	2018	2018/2017 (%)	2019*	2019*/2018 (%)
Road accidents	1,034	934	-9.7	930	-0.4
Fatalities	78	58	-25.6	71	22.4
Total injuries	1,276	1,171	-8.2	1,095	-6.5
Serious injuries	70	69	-1.4	51	-26.1
Slight injuries	1,206	1,102	-8.6	1,044	-5.3

* Provisional data

Graph 2: Road traffic accidents and casualties, September 2017 - 2019*



* Provisional data

Table 2: Road traffic accidents and casualties, by region and department, September 2018 and 2019*

Region and department	Road accidents			Fatalities			Serious injuries			Slight injuries		
	2018	2019*	%	2018	2019*	%	2018	2019*	%	2018	2019*	%
Greece Total	934	930	-0.4	58	71	22.4	69	51	-26.1	1,102	1,044	-5.3
Anatoliki Makedonia and Thraki (East Macedonia and Thrace)	41	33	-19.5	2	3	50.0	6	3	-50.0	51	39	-23.5
Drama	8	8	0.0	0	0		0	0		13	11	
Evros	11	5	-54.5	1	0		2	0		14	5	
Kavala	15	10	-33.3	1	1		2	0		16	13	
Xanthi	2	7	250.0	0	2		1	3		1	6	
Rodopi	5	3	-40.0	0	0		1	0		7	4	
Kentriki Makedonia (Central Macedonia)	175	159	-9.1	5	16	220.0	4	6	50.0	223	185	-17.0
Imathia	7	0	-100.0	0	0		0	0		8	0	
Thessaloniki	131	126	-3.8	2	9		3	4		170	141	
Kilkis	7	7	0.0	1	0		0	0		7	11	
Pella	6	4	-33.3	1	0		0	0		6	5	
Pieria	3	4	33.3	0	1		0	1		4	4	
Serres	6	6	0.0	1	2		1	1		7	5	
Chalkidiki	15	12	-20.0	0	4		0	0		21	19	
Dytiki Makedonia (West Macedonia)	7	5	-28.6	4	0	-100.0	3	1	-66.7	5	6	20.0
Grevena	1	0	-100.0	0	0		0	0		1	0	
Kastoria	1	1	0.0	0	0		1	0		0	1	
Kozani	4	3	-25.0	3	0		2	1		4	2	
Florina	1	1	0.0	1	0		0	0		0	3	
Ipeiros (Epirus)	12	12	0.0	3	1	-66.7	3	3	0.0	12	14	16.7
Arta	1	1	0.0	1	0		0	0		0	2	
Thesprotia	5	4	-20.0	1	0		3	1		2	4	
Ioannina	6	6	0.0	1	0		0	1		10	8	
Preveza	0	1	-	0	1		0	1		0	0	
Thessalia (Thessaly)	19	21	10.5	0	4	-	6	7	16.7	25	16	-36.0
Karditsa	4	8	100.0	0	2		1	1		4	6	
Larissa	7	5	-28.6	0	1		3	3		12	5	
Magnissia	3	6	100.0	0	1		2	3		2	3	
Trikala	5	2	-60.0	0	0		0	0		7	2	
Ionian Nisia (Ionian Islands)	14	15	7.1	1	1	0.0	1	1	0.0	16	20	25.0
Zakynthos	3	3	0.0	0	1		0	1		6	1	
Kerkyra	7	3	-57.1	0	0		1	0		7	6	
Kefallinia	0	4	-	0	0		0	0		0	7	
Lefkada	4	5	25.0	1	0		0	0		3	6	

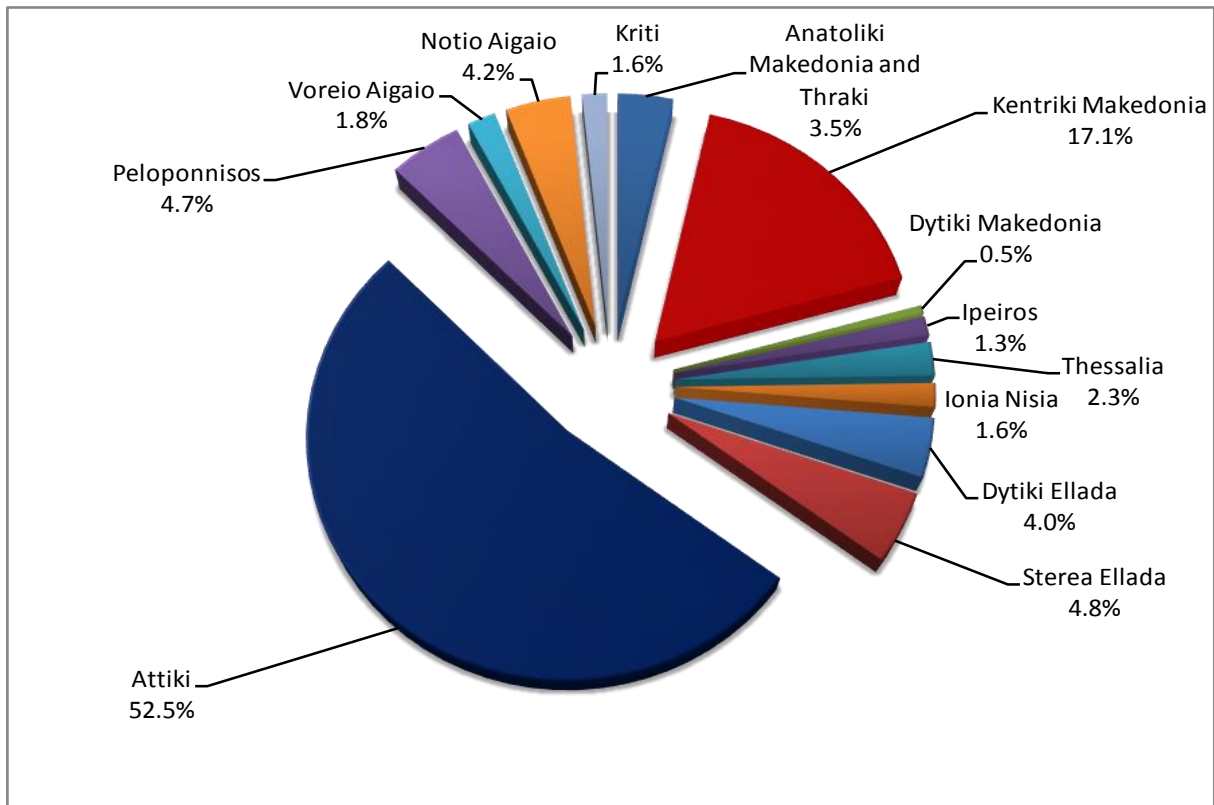
* Provisional data

Table 2: Road traffic accidents and casualties, by region and department, September 2018 and 2019*
(Continued)

Region and department	Road accidents			Fatalities			Serious injuries			Slight injuries		
	2018	2019*	%	2018	2019*	%	2018	2019*	%	2018	2019*	%
Dytiki Ellada (West Greece)	43	37	-14.0	9	7	-22.2	6	3	-50.0	44	42	-4.5
Etolia & Akarnania	14	18	28.6	1	2		1	2		14	18	
Achaia	19	14	-26.3	2	3		4	1		24	17	
Ilia	10	5	-50.0	6	2		1	0		6	7	
Stereia Ellada	37	45	21.6	4	3	-25.0	7	2	-71.4	41	48	17.1
Viotia	7	4	-42.9	0	1		0	0		8	4	
Evia	13	29	123.1	0	1		4	1		16	30	
Evrytania	0	0	-	0	0		0	0		0	0	
Fthiotida	13	10	-23.1	3	1		3	1		14	12	
Fokida	4	2	-50.0	1	0		0	0		3	2	
Attiki (Attica)	449	488	8.7	12	19	58.3	12	11	-8.3	546	550	0.7
Peloponnisos (Peloponnese)	48	44	-8.3	5	7	40.0	5	2	-60.0	52	44	-15.4
Argolida	11	6	-45.5	0	2		0	0		13	8	
Arkadia	5	5	0.0	1	0		0	0		7	5	
Korinthia	22	19	-13.6	1	2		4	2		24	19	
Lakonia	2	2	0.0	1	1		0	0		1	1	
Messinia	8	12	50.0	2	2		1	0		7	11	
Voreio Aigaio (North Aegean)	11	17	54.5	0	3	-	2	1	-50.0	10	19	90.0
Lesvos	9	9	0.0	0	1		2	1		8	12	
Samos	2	4	100.0	0	0		0	0		2	4	
Chios	0	4	-	0	2		0	0		0	3	
Notio Aigaio (South Aegean)	61	39	-36.1	8	4	-50.0	11	8	-27.3	64	47	-26.6
Dodekanissos	27	15	-44.4	8	3		4	5		27	13	
Kyklades	34	24	-29.4	0	1		7	3		37	34	
Kriti (Crete)	17	15	-11.8	5	3	-40.0	3	3	0.0	13	14	7.7
Iraklio	10	11	10.0	1	2		1	3		10	9	
Lassithi	0	1	-	0	0		0	0		0	1	
Rethymno	3	0	-100.0	2	0		0	0		2	0	
Chania	4	3	-25.0	2	1		2	0		1	4	

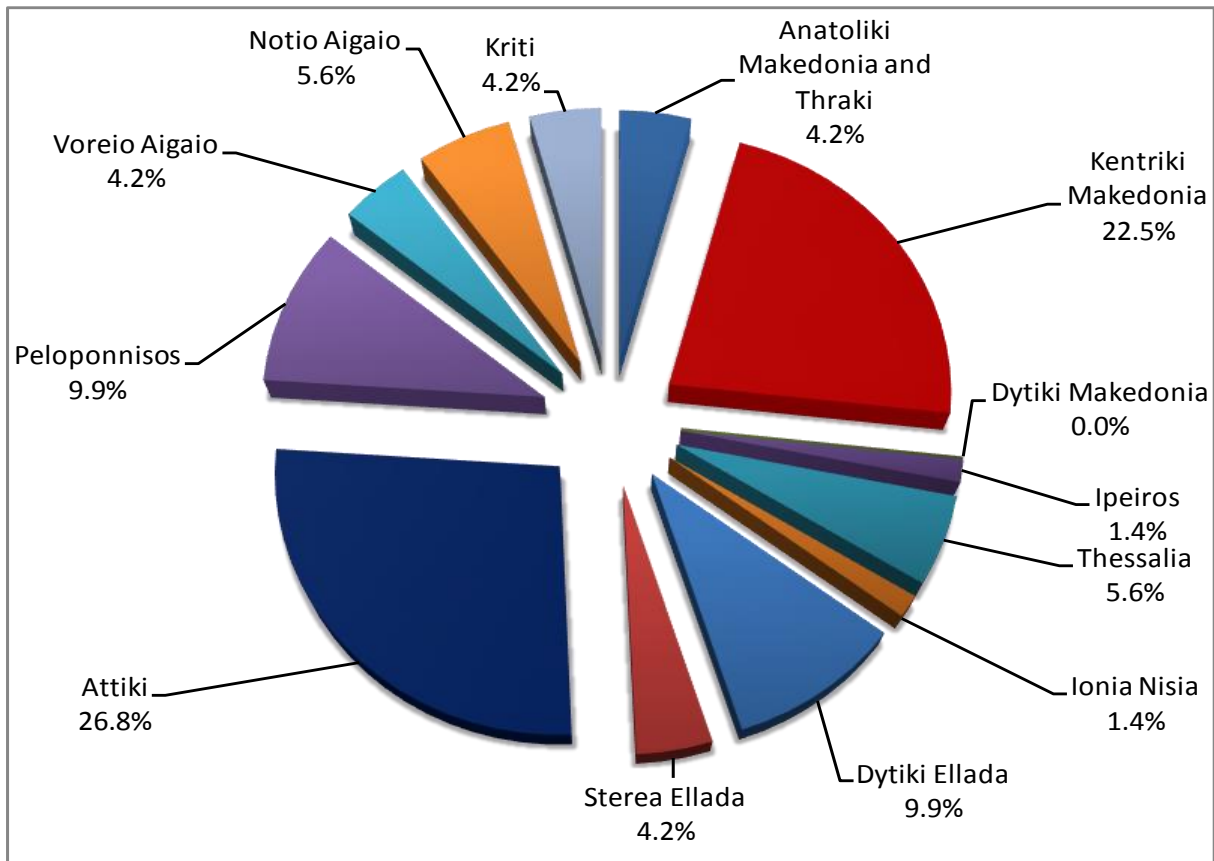
* Provisional data

Graph 3: Road traffic accidents by region, September 2019 *



* Provisional data

Graph 4: Fatalities by region, September 2019 *



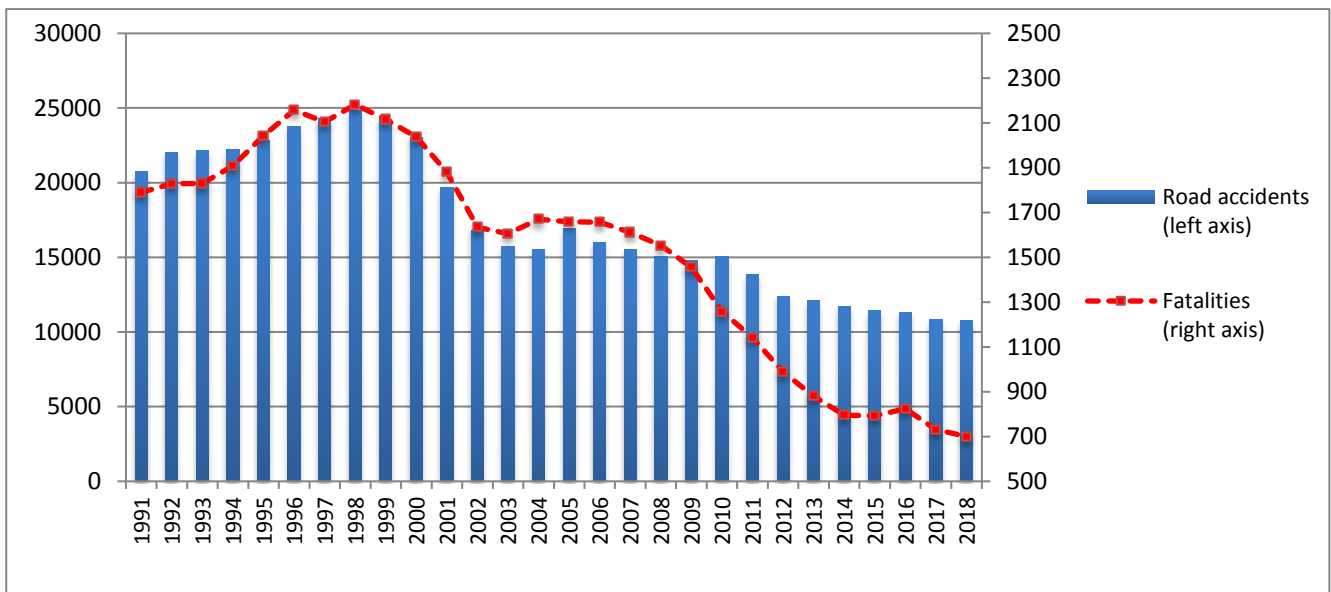
* Provisional data

Table 3: Road traffic accidents and casualties, January - September 2017 - 2019*

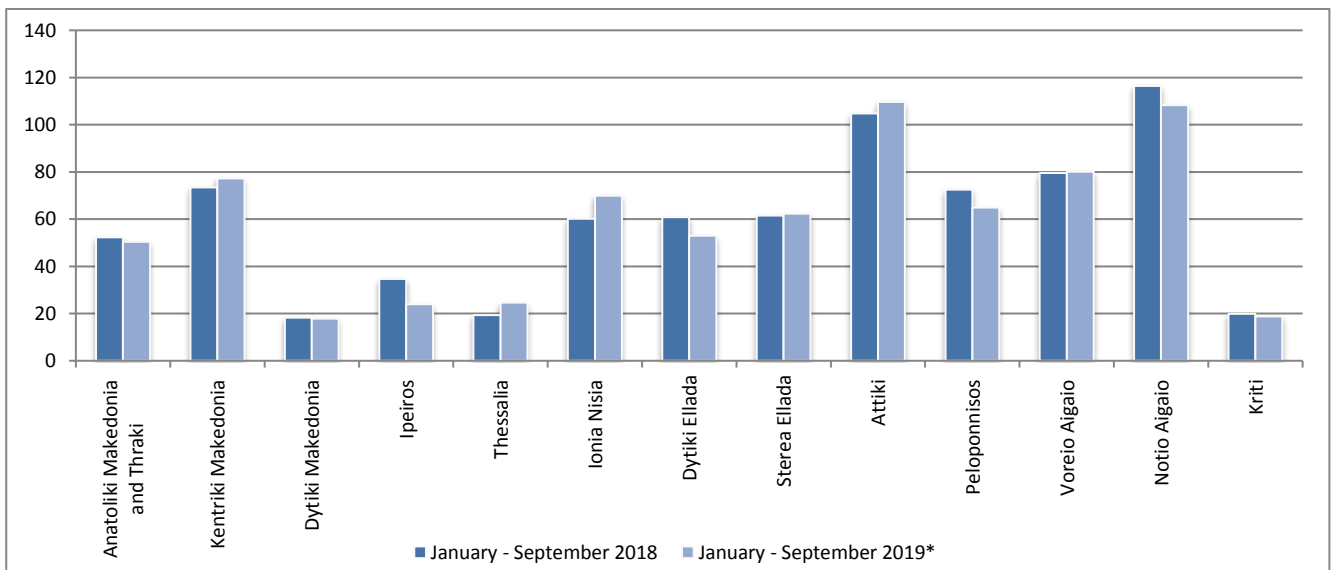
	2017		2018		2019 *
	January - September	Total year	January - September	Total year	January - September
Road accidents	8,020	10,848	7,907	10,737	8,044
<i>Annual change (%)</i>			-1.4	-1.0	1.7
Fatalities	544	731	503	700	536
<i>Annual change (%)</i>			-7.5	-4.2	6.6
Serious injuries	540	706	551	727	496
<i>Annual change (%)</i>			2.0	3.0	-10.0
Slight injuries	9,329	12,565	9,134	12,422	9,029
<i>Annual change (%)</i>			-2.1	-1.1	-1.1

* Provisional data

Graph 5: Total road traffic accidents and fatalities, 1991-2018

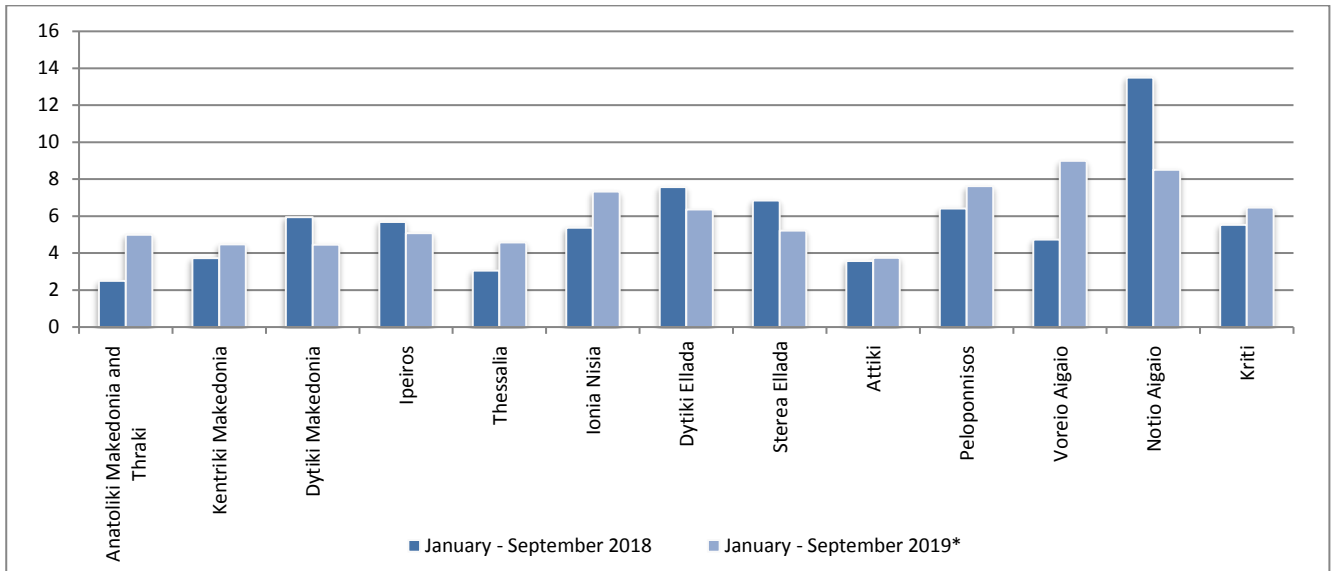


Graph 6: Road traffic accidents per 100,000 inhabitants

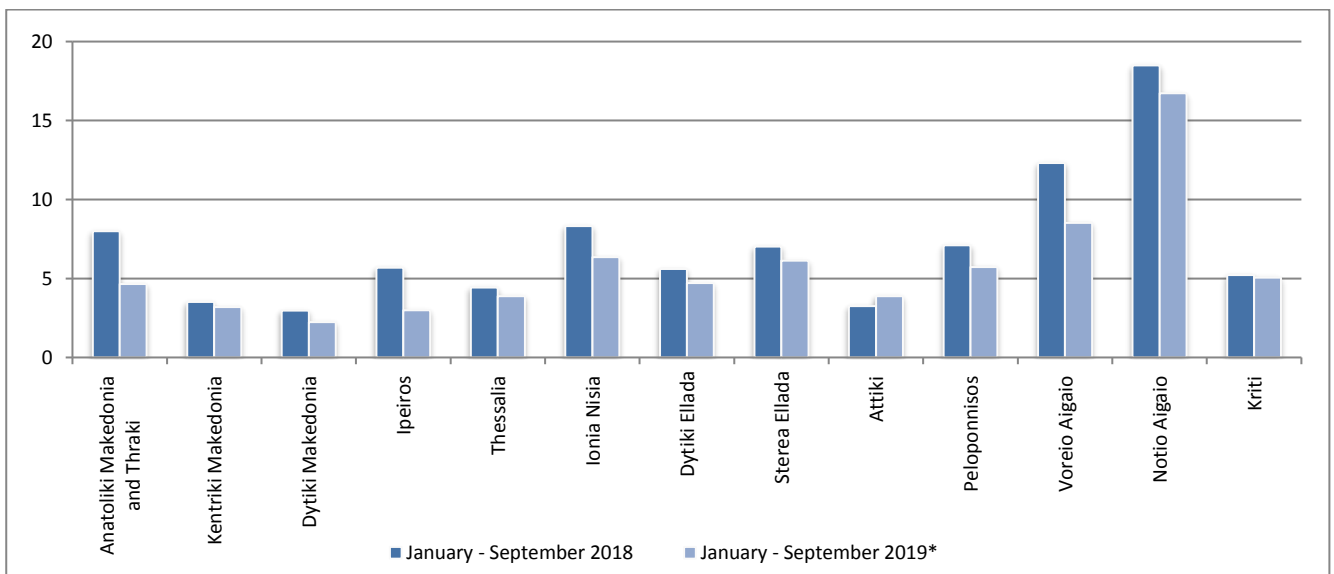


* Provisional data

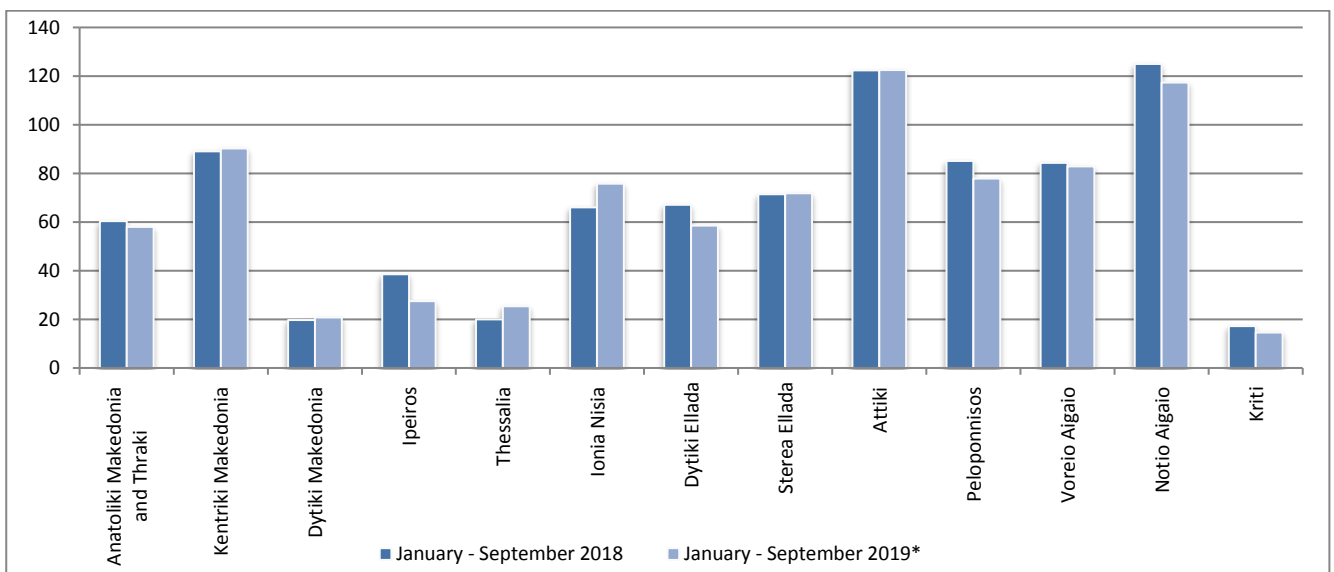
Graph 7: Fatalities per 100,000 inhabitants



Graph 8: Serious injuries per 100,000 inhabitants



Graph 9: Slight injuries per 100,000 inhabitants



* Provisional data

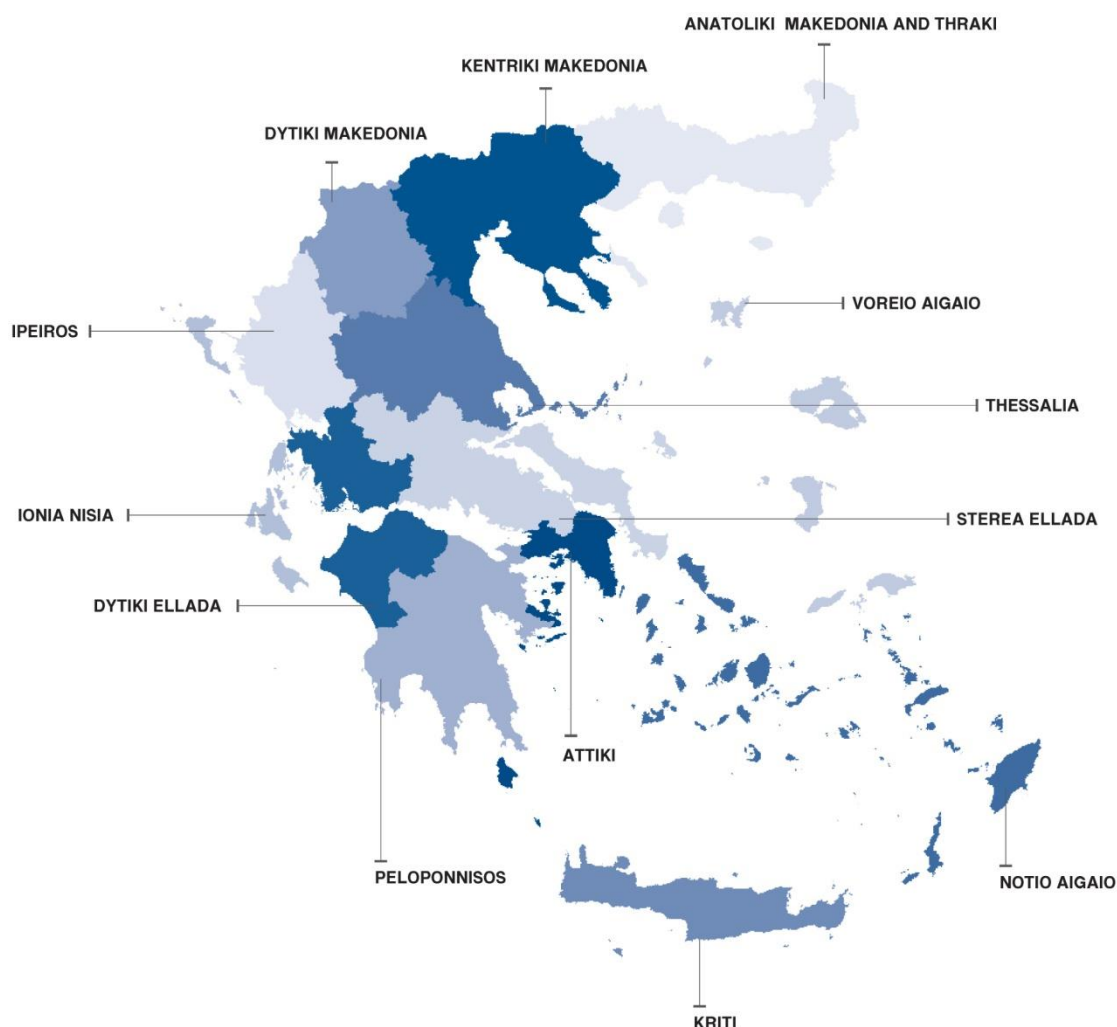
EXPLANATORY NOTES

Survey on Road Traffic Accidents

The Survey on Road Traffic Accidents is conducted on a monthly basis and it records, for each region (see map) and department of Greece and for each month separately, the number of accidents resulting in death or injury, as well as the number of persons injured by categories (drivers, passengers, pedestrians).

On a yearly basis road traffic accidents are further analyzed. The competent agencies for filling in/collecting the forms on road accidents are the local Police Authorities and the local Port Authorities of Greece.

The lower level of analysis for the place where an injury road accident occurred is the Municipal – Local Commune, which is described by a 8-digit geographic code. Data are collected on a monthly basis. The main variables are the following: place of accident, kind of road, casualties, conditions of road surface and type of road.



Legal basis

The Survey on Road Traffic Accidents is governed by Council Decision 93/704 of the European Community.

Reference period

Monthly.

Availability of data

Provisional data are available 2 months after the reference month.
Final data are available 10 months after the reference year.

National definitions **Road accident** (injury accident): Any accident involving at least one road motor vehicle in motion on a public road or square to which the public has access (excluding yards, industrial sites or vehicle depot of public transport enterprises), resulting in at least one injured or killed person. Accidents with only material damages are not included.

Fatality (Death): Any person killed immediately or dying within 30 days as a result of an injury accident (This national definition applies since 01.01.1996)

Person injured: Any person who sustained an injury as result of an injury accident, and who normally needs medical treatment.

Serious injury: Any person who sustained an injury as result of an injury accident, such as brain damages, mutilation, multiple injuries, which may result in lack of awareness or which are life-threatening.

Slight injury: Any person injured who sustained minor and not life-threatening injuries.

Vehicle: Include motor vehicles, trolleybuses, motorcycles, bicycles, motorbikes, agricultural and road making machines, animal and hand-drawn vehicles. Railway vehicles are excluded, unless the road accident involves at least one of the aforementioned types of vehicles and therefore, railway vehicles are considered vehicles.

Methodology The forms of the survey are filled in by the local Police Authorities and the local Port Authorities as well.

References More information about Road Traffic Accidents is available on ELSTAT's website and more specifically at the link: www.statistics.gr > Population, Social Conditions > Accidents > Road Traffic Accidents.
It should be noted that previous press releases and time series are available on ELSTAT's website: www.statistics.gr