



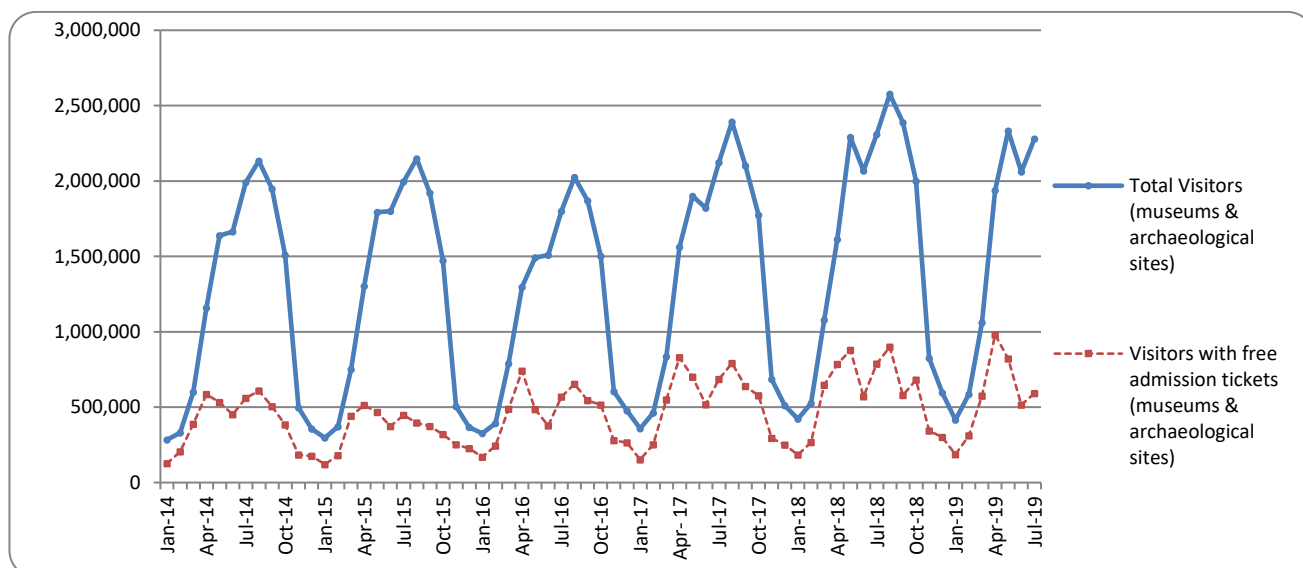
PRESS RELEASE

SURVEY ON MUSEUMS AND ARCHAEOLOGICAL SITES ATTENDANCE JULY 2019

The Hellenic Statistical Authority (ELSTAT) announces the results of the *Survey on Museums and Archaeological Sites Attendance* for July 2019. More specifically:

- In July 2019 compared with the corresponding month of 2018, Museums experienced a 4.1% increase in the number of visitors and a 10.1% increase in the number of free admission visitors as well as a 26.4% increase in their receipts (Table 1).
- In July 2019 compared with the corresponding month of 2018, the number of visitors at Archaeological sites recorded a decrease of 3.3%, while a decrease of 38.5% was observed in the number of free admission visitors and a 9.4% increase in the corresponding receipts (Table 1).
- During the seven-month period from January to July 2019, an increase of 5.6% was observed in the number of visitors of Museums, while an increase of 4.6% was recorded in the number of free admission visitors and a 29.6% increase in the relevant receipts, in comparison with the corresponding period of 2018 (Table 2).
- As regards Archaeological sites, during the seventh-month period from January to July 2019, an increase of 2.7% was recorded in the number of visitors, while a 7.7% decrease was observed in the number of free admission visitors and a 9.6% increase in the relevant receipts, in comparison with the corresponding period of 2018 (Table 2).

Graph 1: Visitors of Museums and Archaeological sites (January 2014 – July 2019)



Information on methodological issues:

Sectoral Statistics Division
Tourism and Cultural Statistics Section
Head of the Section: Asimina Katri
Tel: +30 213 135 2168
Fax: +30 213 135 2947
e-mail: a.katri@statistics.gr

Information for data provision:

Tel. +30 213 135 2022, 2308, 2310
e-mail: Data.dissem@statistics.gr

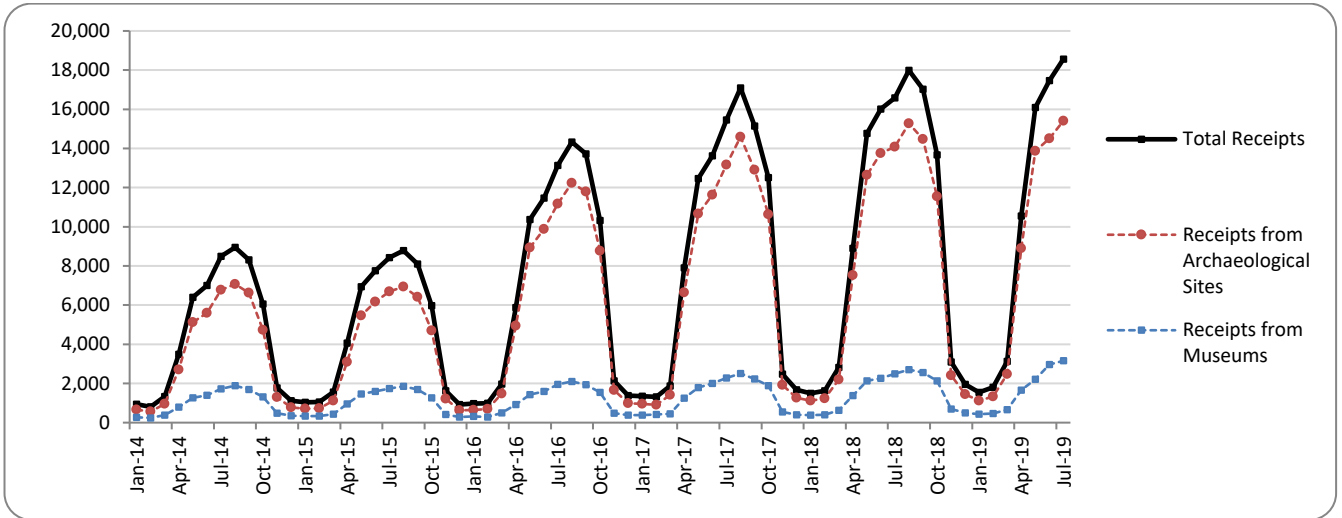
**TABLE 1: VISITORS OF MUSEUMS AND ARCHAEOLOGICAL SITES - TOTAL RECEIPTS
(JULY 2018 & JULY 2019)**

I. NUMBER OF VISITORS			
Museums and Archaeological sites	2018	2019	Change 2019/2018
Total number of visitors (A+B)	2,310,022	2,280,544	-1.3%
A. Museums (C+E)	624,741	650,317	4.1%
Acropolis Museum	196,446	191,107	-2.7%
National Archaeological	57,738	58,270	0.9%
Ancient Olympia	16,710	14,899	-10.8%
Palace of the Grand Master (Rhodes)	42,218	45,427	7.6%
Herakleion Archaeological (Crete)	79,794	102,483	28.4%
White Tower	22,948	29,176	27.1%
Delphi	23,589	23,782	0.8%
Other museums	185,298	185,173	-0.1%
B. Archaeological Sites (D+F)	1,685,281	1,630,227	-3.3%
Epidavros ⁽¹⁾	60,095	60,466	0.6%
The Acropolis of Mycenae & Atreus' Treasure	52,465	50,638	-3.5%
The Acropolis of Athens ⁽²⁾	398,987	330,250	-17.2%
Sounio	33,398	40,070	20.0%
The Acropolis of Lindos	88,615	94,973	7.2%
Royal Tombs of Vergina	17,802	16,925	-4.9%
Ancient Olympia	68,541	52,274	-23.7%
Knossos (Crete)	158,787	153,945	-3.0%
Phaistos (Crete)	13,545	10,824	-20.1%
Ancient Korinthos ⁽¹⁾	21,459	23,722	10.5%
Mystras ⁽¹⁾	18,081	17,736	-1.9%
Delphi	45,705	42,905	-6.1%
Other archaeological sites	707,801	735,499	3.9%
II. VISITORS WHO PAID TICKET			
	2018	2019	Change 2019/2018
Total number of visitors who paid ticket (C+D)	1,523,999	1,688,208	10.8%
C. Museums	400,489	403,483	0.7%
D. Archaeological sites	1,123,510	1,284,725	14.3%
III. VISITORS WITH FREE ADMISSION TICKETS			
	2018	2019	Change 2019/2018
Total number of visitors with free admission ticket (E+F)	786,023	592,336	-24.6%
E. Museums	224,252	246,834	10.1%
F. Archaeological sites	561,771	345,502	-38.5%
IV. RECEIPTS (euros)			
	2018	2019	Change 2019/2018
Total Receipts (G+H)	16,578,966	18,567,027	12.0%
G. Museums	2,497,780	3,157,200	26.4%
H. Archaeological sites	14,081,186	15,409,827	9.4%

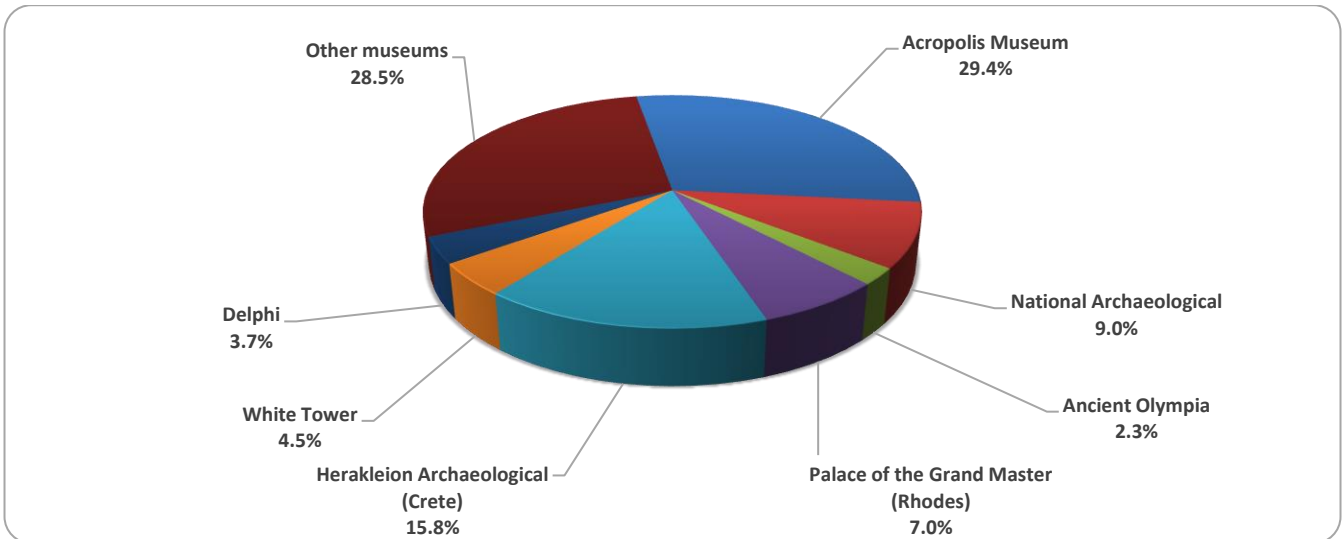
⁽¹⁾ Flat rate ticket, valid both for the museum and the archaeological site.

The following graphs depict the evolution of the receipts (Graph 2), as well as the number of visitors by Museum and Archaeological Site (Graphs 3 and 4, respectively).

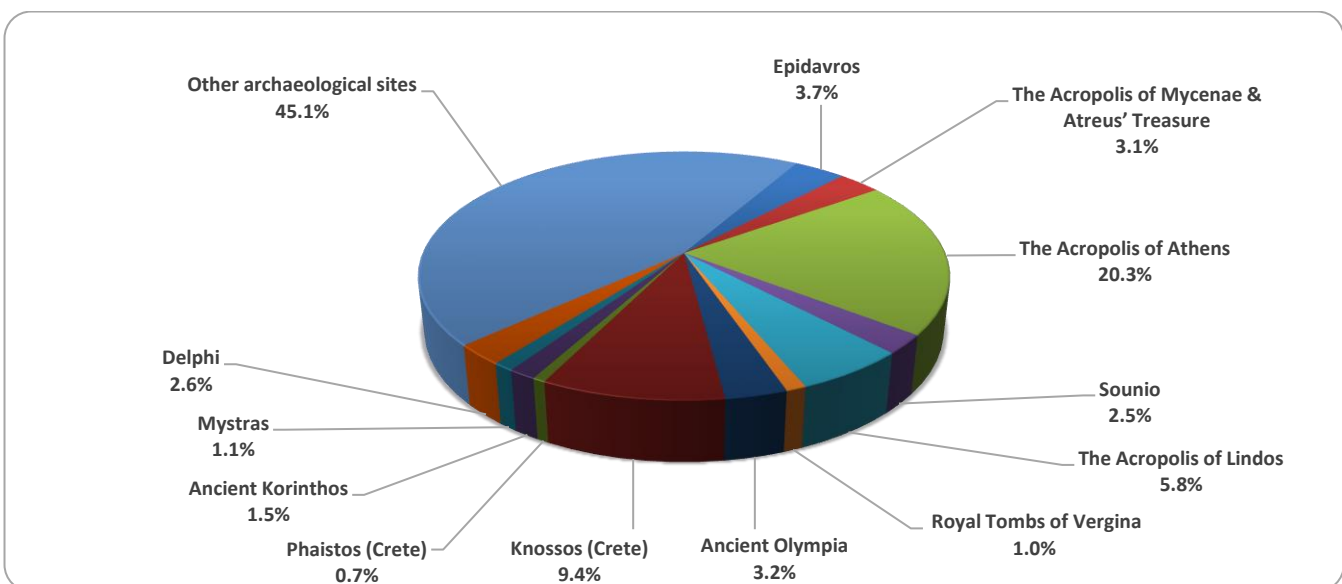
Graph 2: Receipts from Museums and Archaeological Sites (January 2014 – July 2019)
(in thousand euro)



Graph 3: Percentage distribution of visitors by Museum, July 2019



Graph 4: Percentage distribution of visitors by Archaeological site, July 2019



**TABLE 2: VISITORS OF MUSEUMS AND ARCHAEOLOGICAL SITES - TOTAL RECEIPTS
(2017, 2018, JANUARY-JULY 2018 & 2019)**

I. VISITORS					
Museums and Archaeological sites	2017	2018	JANUARY-JULY		change 2019/2018
			2018	2019	
Total number of visitors (A+B)	16,524,557	18,603,282	10,303,211	10,674,045	3.6%
A. Museums (C+E)	5,191,781	5,702,211	3,166,039	3,344,827	5.6%
Acropolis Museum	1,593,362	1,774,304	1,007,781	1,036,875	2.9%
National Archaeological	545,555	594,219	325,164	350,184	7.7%
Ancient Olympia	145,118	156,658	95,732	99,439	3.9%
Palace of the Grand Master (Rhodes)	235,413	242,759	117,684	127,995	8.8%
Herakleion Archaeological (Crete)	426,191	555,031	282,881	330,037	16.7%
White Tower	268,149	225,944	117,608	134,088	14.0%
Delphi	211,827	249,754	148,037	166,316	12.3%
Other museums	1,766,166	1,903,542	1,071,152	1,099,893	2.7%
B. Archaeological Sites (D+F)	11,332,776	12,901,071	7,137,172	7,329,218	2.7%
Epidavros ⁽¹⁾	469,060	548,900	333,817	312,405	-6.4%
The Acropolis of Mycenae & Atreus' Treasure	412,397	495,993	299,773	299,945	0.1%
The Acropolis of Athens ⁽²⁾	2,766,218	3,150,604	1,810,830	1,820,731	0.5%
Sounio	259,709	306,665	183,927	194,376	5.7%
The Acropolis of Lindos ⁽³⁾	441,012	489,137	243,893	260,791	6.9%
Royal Tombs of Vergina	203,632	222,503	137,711	135,812	-1.4%
Ancient Olympia	481,252	484,238	269,552	248,751	-7.7%
Knossos (Crete)	634,710	855,663	426,538	480,916	12.7%
Phaistos (Crete)	95,182	134,538	72,696	61,113	-15.9%
Ancient Korinthos ⁽¹⁾	191,836	196,944	112,959	119,409	5.7%
Mystras ⁽¹⁾	125,549	145,939	83,020	81,247	-2.1%
Delphi	345,804	405,947	242,665	235,685	-2.9%
Other archaeological sites	4,906,415	5,464,000	2,919,791	3,078,037	5.4%
II. VISITORS WHO PAID TICKET					
	2017	2018	JANUARY-JULY		change
			2018	2019	2019/2018
Total number of visitors who paid ticket (C+D)	10,288,448	11,576,110	6,183,844	6,692,004	8.2%
C. Museums	2,831,466	3,155,269	1,696,502	1,807,626	6.6%
D. Archaeological sites	7,456,982	8,420,841	4,487,342	4,884,378	8.8%
III. VISITORS WITH FREE ADMISSION TICKETS					
	2017	2018	JANUARY-JULY		change
			2018	2019	2019/2018
Total number of visitors with free admission ticket (E+F)	6,236,109	7,027,172	4,119,367	3,982,041	-3.3%
E. Museums	2,360,315	2,546,942	1,469,537	1,537,201	4.6%
F. Archaeological sites	3,875,794	4,480,230	2,649,830	2,444,840	-7.7%
IV. RECEIPTS (euros)					
	2017	2018	JANUARY-JULY		change
			2018	2019	2019/2018
Total Receipts (G+H)	102,887,879	115,772,341	62,224,055	70,141,724	12.7%
G. Museums	16,175,121	18,251,493	9,670,543	12,533,017	29.6%
H. Archaeological sites	86,712,758	97,520,848	52,553,512	57,608,707	9.6%

⁽¹⁾ Flat rate ticket, valid both for the museum and the archaeological site.

⁽²⁾ From May 2017 onwards, the data for the number of tickets in the archaeological site of the Acropolis of Athens include the tickets of the Ancient Theatre of Dionysus.

⁽³⁾ The data referring to the number of tickets for the archaeological sites of the Acropolis of Lindos from November 2018 to February 2019 are provisional and are based on estimation.

EXPLANATORY NOTES

Survey on Museums and Archaeological Sites Attendance	<p>The Survey on Museums and Archaeological Sites Attendance has been producing results since 1970, The survey collects data from the Archaeological Receipts Fund (ARF) of the Ministry of Culture and Sports concerning the number of visitors and the receipts from the tickets sold in the Museums and Archaeological sites of the country.</p> <p>The corresponding data for the Acropolis Museum is available from December 2009 onwards.</p>
Legal Framework	<p>The survey is conducted since 1970 on a regular basis and it produces results on a monthly and yearly basis, in compliance with the Joint Ministerial Decision 15189/B379/73.</p>
Reference Period	<p>01/07/2019 to 30/07/2019</p>
Methodology and Definitions	<p>The Survey is conducted on a monthly basis from data collected from the Archaeological Receipts Fund (ARF) of the Ministry of Culture and Sports concerning on the number of visitors and the receipts from the tickets sold in the Museums and Archaeological sites of the country, ELSTAT tabulates the data on Museums and the Archaeological sites for the whole of the Country, by month and by year.</p> <p>Number of flat rate tickets</p> <p>From April 1999 onwards, in some museums and the nearby archaeological sites, in addition to the ordinary ticket, a new “flat rate ticket” was established, which is valid for both the museum and the nearby archaeological site, The total number of these flat rate tickets for June 2019 was 147,912.</p>
References	<p>More information on the Survey on Museums and Archaeological Sites Attendance and detailed time series are available on: http://www.statistics.gr/en/statistics/-/publication/SCI21/</p>