



## PRESS RELEASE

### Turnover indices in Transport Sector: 2<sup>nd</sup> Quarter 2019

The Hellenic Statistical Authority (ELSTAT) announces the Turnover Indices in Transport Sector, with base year 2015=100.0, for the 2<sup>nd</sup> quarter 2019.

#### Year on Year growth rates

- The Turnover Index in **land transport and transport via pipelines** in the 2<sup>nd</sup> quarter 2019 as compared to the 2<sup>nd</sup> quarter 2018 increased by 1.1%, while a decrease of 1.8% was observed for the corresponding period of 2018 compared to 2017 (Table 1, Graph 1).
- The Turnover Index in **water transport** in the 2<sup>nd</sup> quarter 2019 as compared to the 2<sup>nd</sup> quarter 2018 increased by 2.1%, while an increase of 8.0% was observed for the corresponding period of 2018 compared to 2017 (Table 1, Graph 2).
- The Turnover Index in **air transport** in the 2<sup>nd</sup> quarter 2019 as compared to the 2<sup>nd</sup> quarter 2018 increased by 7.8%, while a decrease of 4.6% was observed for the corresponding period of 2018 compared to 2017 (Table 2, Graph 3).
- The Turnover Index in **warehousing and support activities for transportation** in the 2<sup>nd</sup> quarter 2019 as compared to the 2<sup>nd</sup> quarter 2018 increased by 6.4%, while an increase of 11.1% was observed for the corresponding period of 2018 compared to 2017 (Table 2, Graph 4).
- The Turnover Index in **travel agency, tour operator reservation service and related activities** in the 2<sup>nd</sup> quarter 2019 as compared to the 2<sup>nd</sup> quarter 2018 increased by 13.4%, while an increase of 12.6% was observed for the corresponding period of 2018 compared to 2017 (Table 3, Graph 5).

#### Information on methodological issues:

Business Statistics Division  
Trade and Services Indices Section  
Dalli Argyro, tel. (+30) 213 135 2499  
Fax: (+30) 213 135 2398  
E-mail: [a.ntalli@statistics.gr](mailto:a.ntalli@statistics.gr)

#### Information for data provision

Tel: (+30) 213 135 2022, 2308, 2310  
E-mail: [data.dissem@statistics.gr](mailto:data.dissem@statistics.gr)

### *Quarter on Quarter growth rates*

- The Turnover Index in **land transport and transport via pipelines** in the 2<sup>nd</sup> quarter 2019 as compared to the 1<sup>st</sup> quarter 2018 increased by 13.3%, while the increase for the corresponding period of 2018 was 7.8% (Table 1, Graph 1).
- The Turnover Index in **water transport** in the 2<sup>nd</sup> quarter 2019 as compared to the 1<sup>st</sup> quarter 2018 increased by 41.8%, while the increase for the corresponding period of 2018 was 69.3% (Table 1, Graph 2).
- The Turnover Index in **air transport** in the 2<sup>nd</sup> quarter 2019 as compared to the 1<sup>st</sup> quarter 2018 increased by 88.2%, while the increase for the corresponding period of 2018 was 73.5% (Table 2, Graph 3).
- The Turnover Index in **warehousing and support activities for transportation**, in the 2<sup>nd</sup> quarter 2019 as compared to the 1<sup>st</sup> quarter 2018 increased by 17.1%, while the increase for the corresponding period of 2018 was 17.6% (Table 2, Graph 4).
- The Turnover Index in **travel agency, tour operator reservation service and related activities**, in the 2<sup>nd</sup> quarter 2019 as compared to the 1<sup>st</sup> quarter 2018 increased by 188.0%, while the increase for the corresponding period of 2018 was 148.2% (Table 3, Graph 5).

The tables and the graphs that follow present the evolution of the indices from 2015 onwards.

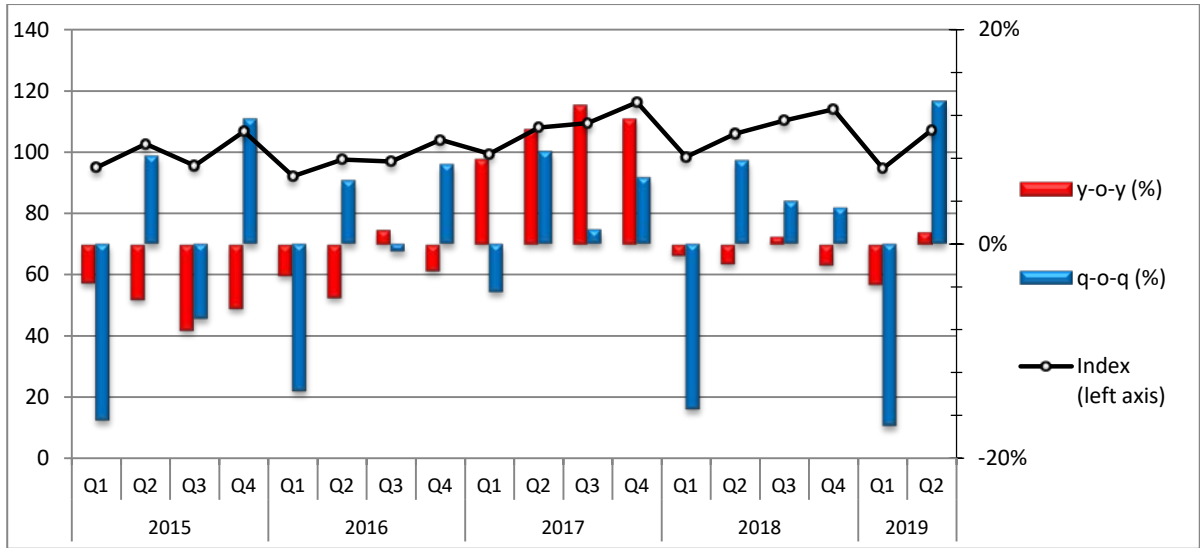
**Table 1.** Turnover Indices in land transport and transport via pipelines (div. 49, NACE rev.2) and in water transport (div. 50, NACE rev.2), Base year: 2015=100.0

Year	Quarter	Index (div 49)	y-o-y change (%)	q-o-q change (%)	Index (div 50)	y-o-y change (%)	q-o-q change (%)
2015	Q1	94.9	-3.6	-16.4	63.6	-3.3	-23.4
	Q2	102.7	-5.2	8.2	104.2	4.2	63.7
	Q3	95.6	-8.0	-6.9	154.9	-5.6	48.7
	Q4	106.8	-6.0	11.7	77.3	-6.9	-50.1
	<i>Annual average</i>	<i>100.0</i>	<i>-5.7</i>		<i>100.0</i>	<i>-3.1</i>	
2016	Q1	92.1	-2.9	-13.7	63.8	0.3	-17.5
	Q2	97.6	-5.0	5.9	98.2	-5.7	53.9
	Q3	96.9	1.4	-0.7	151.4	-2.2	54.3
	Q4	104.1	-2.5	7.4	68.4	-11.5	-54.8
	<i>Annual average</i>	<i>97.7</i>	<i>-2.3</i>		<i>95.5</i>	<i>-4.5</i>	
2017	Q1	99.5	8.0	-4.4	55.3	-13.3	-19.1
	Q2	108.1	10.7	8.6	87.0	-11.4	57.3
	Q3	109.5	13.0	1.3	136.1	-10.1	56.4
	Q4	116.3	11.7	6.2	66.9	-2.2	-50.8
	<i>Annual average</i>	<i>108.3</i>	<i>10.9</i>		<i>86.4</i>	<i>-9.5</i>	
2018	Q1	98.4	-1.1	-15.4	55.5	0.3	-17.1
	Q2	106.1	-1.8	7.8	94.0	8.0	69.3
	Q3	110.3	0.7	4.0	120.6	-11.4	28.3
	Q4	114.0	-2.0	3.4	74.5	11.3	-38.2
	<i>Annual average</i>	<i>107.2</i>	<i>-1.0</i>		<i>86.1</i>	<i>-0.2</i>	
2019	Q1	94.7	-3.8	-16.9	67.7 <sup>(*)</sup>	22.0	-9.1
	Q2	107.3	1.1	13.3	96.0	2.1	41.8

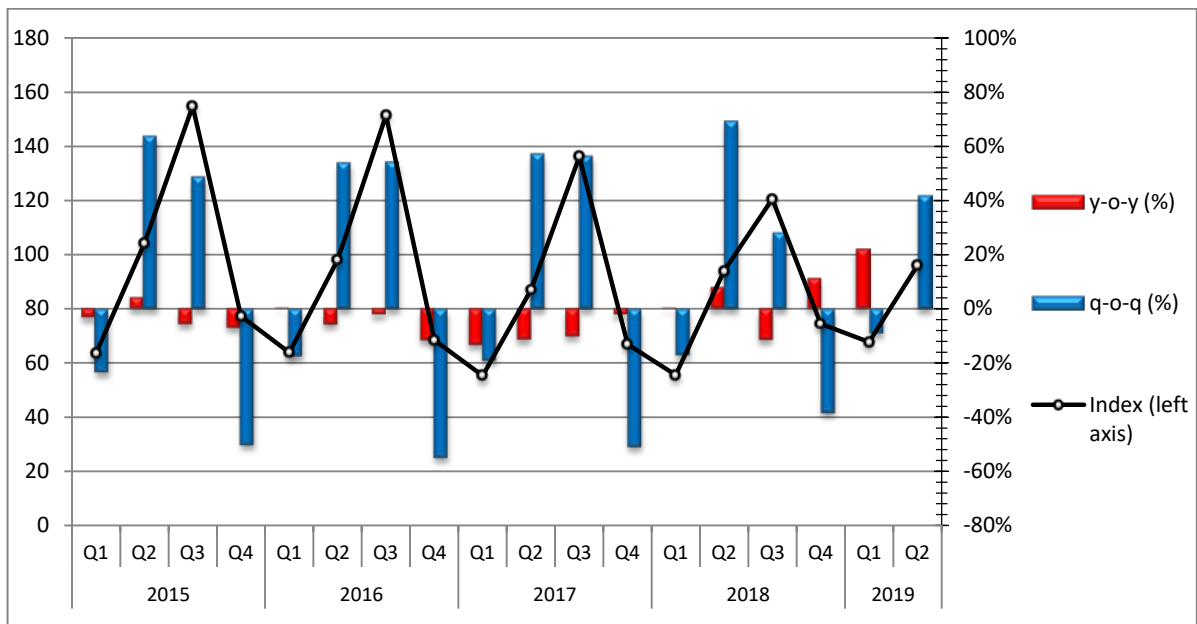
(\*) Revised data

**Graph 1.** Evolution of turnover index in land transport and transport via pipelines (div. 49, NACE rev.2)

Base year: 2015=100.0



**Graph 2.** Evolution of turnover index in water transport (div. 50, NACE rev.2), Base year: 2015=100.0



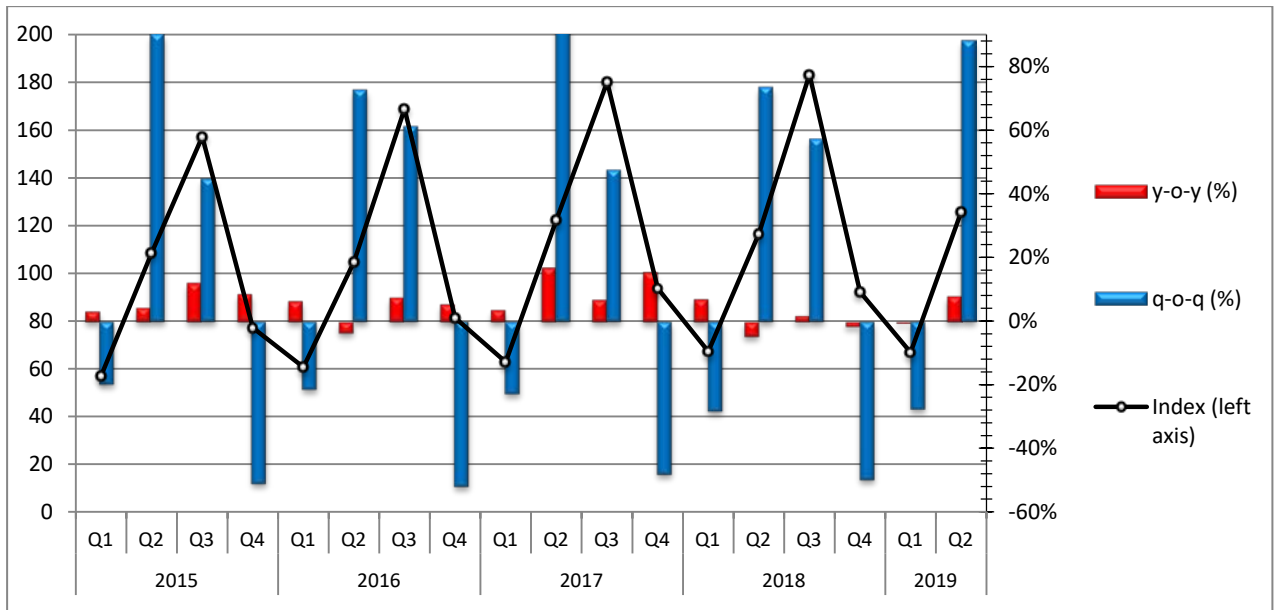
**Table2.** Turnover Indices in air transport (div 51, NACE rev.2) and in warehousing and support activities for transportation (div 52, NACE rev.2),

Base year: 2015=100.0

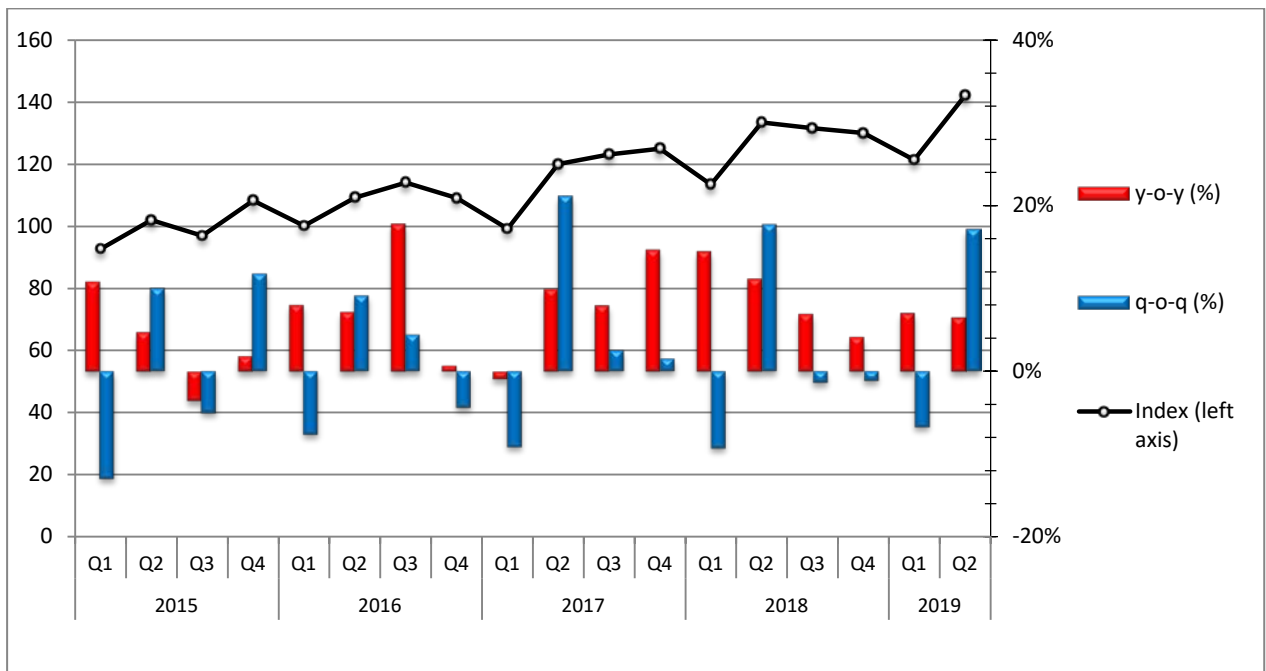
Year	Quarter	Index (div 51)	y-o-y change (%)	q-o-q change (%)	Index (div 52)	y-o-y change (%)	q-o-q change (%)
2015	Q1	57.1	3.1	-19.7	92.7	10.8	-12.9
	Q2	108.6	4.3	90.2	102.0	4.7	10.0
	Q3	157.2	11.8	44.7	96.9	-3.6	-5.0
	Q4	77.2	8.5	-50.9	108.3	1.8	11.8
	<i>Annual average</i>	<b>100.0</b>	<b>7.8</b>		<b>100.0</b>	<b>3.1</b>	
2016	Q1	60.7	6.2	-21.4	100.1	8.0	-7.6
	Q2	104.8	-3.5	72.8	109.3	7.1	9.1
	Q3	168.9	7.4	61.1	114.1	17.7	4.4
	Q4	81.3	5.4	-51.9	109.1	0.7	-4.4
	<i>Annual average</i>	<b>103.9</b>	<b>3.9</b>		<b>108.1</b>	<b>8.1</b>	
2017	Q1	62.8	3.5	-22.8	99.2	-0.9	-9.1
	Q2	122.2	16.6	94.6	120.1	9.9	21.1
	Q3	180.2	6.7	47.5	123.1	7.9	2.5
	Q4	93.6	15.1	-48.1	125.0	14.6	1.5
	<i>Annual average</i>	<b>114.7</b>	<b>10.4</b>		<b>116.9</b>	<b>8.1</b>	
2018	Q1	67.2	7.0	-28.2	113.4	14.4	-9.2
	Q2	116.6	-4.6	73.5	133.5	11.1	17.6
	Q3	183.3	1.7	57.3	131.6	6.9	-1.4
	Q4	92.2	-1.5	-49.7	130.1	4.1	-1.1
	<i>Annual average</i>	<b>114.8</b>	<b>0.1</b>		<b>127.2</b>	<b>8.8</b>	
2019	Q1	66.8 <sup>(*)</sup>	-0.6	-27.5	121.4	7.0	-6.7
	Q2	125.7	7.8	88.2	142.1	6.4	17.1

(\*) Revised data

**Graph 3.** Evolution of turnover index in air transport (div. 51, NACE rev.2), Base year: 2015=100.0



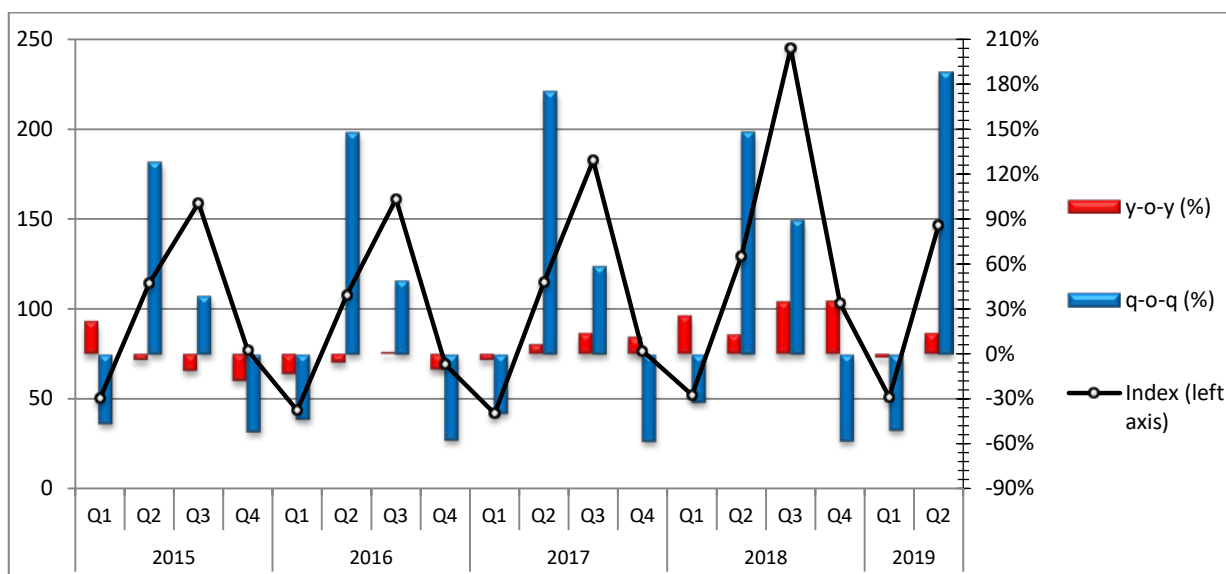
**Graph 4.** Evolution of turnover index in warehousing and support activities for transportation (div. 52, NACE rev.2), Base year: 2015=100.0



**Table 3.** Turnover Index in travel agency, tour operator reservation service and related activities (div. 79, NACE rev. 2), Base year: 2015=100.0

Year	Quarter	Index (div 79)	y-o-y change (%)	q-o-q change (%)
2015	Q1	50.1	21.2	-46.2
	Q2	114.2	-3.9	128.2
	Q3	158.9	-11.0	39.2
	Q4	76.8	-17.6	-51.7
	<i>Annual average</i>	<b>100.0</b>	<b>-7.4</b>	
2016	Q1	43.5	-13.2	-43.4
	Q2	107.7	-5.7	147.9
	Q3	161.1	1.4	49.5
	Q4	69.0	-10.1	-57.2
	<i>Annual average</i>	<b>95.3</b>	<b>-4.7</b>	
2017	Q1	41.7	-3.9	-39.5
	Q2	114.9	6.6	175.2
	Q3	182.7	13.4	59.1
	Q4	76.7	11.1	-58.0
	<i>Annual average</i>	<b>104.0</b>	<b>9.1</b>	
2018	Q1	52.1	24.8	-32.1
	Q2	129.3	12.6	148.2
	Q3	245.1	34.1	89.5
	Q4	103.2	34.6	-57.9
	<i>Annual average</i>	<b>132.4</b>	<b>27.3</b>	
2019	Q1	50.9	-2.3	-50.7
	Q2	146.6	13.4	188.0

**Graph 5.** Evolution of turnover index in travel agency, tour operator reservation service and related Activities (div. 79, NACE rev. 2), Base year: 2015=100.0



## METHODOLOGICAL NOTES

<b>Generally</b>	The Turnover Indices in Transport Sector are quarterly business cycle indices, which were first released in 2005, with base year (b.y.) the year 2005=100.0.
<b>Purpose of the index – definitions</b>	The purpose of these indices is to calculate the activity of the surveyed sector in value terms. The turnover comprises the totals invoiced by the observation unit during the reference period (quarter) and corresponds to the market sales of goods and services supplied to third parties. Subsidies on goods or services are also included. Turnover excludes VAT and other similar deductible taxes directly linked to turnover as well as all duties and taxes on the goods or services invoiced by the unit. Income classified as other operating income, financial income and extraordinary income in company accounts is also excluded from turnover.
<b>Legal basis</b>	The compilation of the turnover indices in transport sector is governed by the Council Regulation (EEC) No.1165/98 of 19 <sup>th</sup> May 1998 concerning “Short Term Statistics” and by the Regulation (EC) No 1158/05 of the European Parliament and Council, amending the original Regulation 1165/98. Additionally, the compilation of the above index is governed by the Regulation No.1893/2006 of the European Parliament and of the Council of 20 <sup>th</sup> December 2006, establishing the statistical classification of economic activities NACE Rev.2.
<b>Reference period</b>	Quarter.
<b>Base year</b>	2015=100.0.
<b>Revision</b>	Pursuant to the provisions of Council Regulation No. 1165/98 concerning “Short Term Statistics”, the index is revised every five (5) years, in years ending in 0 or 5. The purpose of revising these turnover indices is to adapt them to recent developments in the breakdown of the transport sector.
<b>Statistical classification</b>	The NACE Rev.2 statistical classification of economic activities is used, as regards the structure in conformity with the Regulation (EC) 1893/2006 of the Council and the European Parliament.
<b>Geographical coverage</b>	The index covers the whole of the country.
<b>Coverage of economic activities</b>	The index covers the codes for divisions: 49 (land transport / transport via pipelines), 50 (water transport), 51 (air transport), 52 (warehousing and support activities for transportation) and 79 (travel agency, tour operator reservation service and related activities), of NACE Rev.2 statistical classification.
<b>Statistical survey</b>	The index includes trade and services enterprises with an annual turnover (in year 2015) equal or greater than 70,000€, from which a random representative sample of 444 enterprises was therefore selected and surveyed.
<b>Calculating the indices</b>	The index is calculated by the implementation of the chaining method. Initially the moving based index is calculated by comparing the estimated turnover value for the current quarter with the corresponding value of the previous quarter. Afterwards, the fixed base index for the current quarter is calculated by multiplying the moving-based index by the fixed base index of the previous quarter.
<b>Compiled index series</b>	Timeseries of the indices are compiled from the 1 <sup>st</sup> quarter 2000 with base year 2015=100.0. Since the 3 <sup>rd</sup> quarter 2018, shipping companies that are established as branches of foreign enterprises and operate in overseas shipping (enterprises of Law 27/1975, article 25) are included in the sample of the companies of the water transport sector (division 50).
<b>Publication of data</b>	The turnover indices in transport sector (b.y.: 2015=100.0) is released quarterly since the 3 <sup>rd</sup> quarter 2018, with retrospective data from the 1 <sup>st</sup> quarter 2000.



**References**

More information on the methodology for compiling and calculating the turnover indices in transport sector, as well as on the timeseries of the index, can be found on ELSTAT website: <http://www.statistics.gr/en/statistics/-/publication/DKT48/>