



PRESS RELEASE

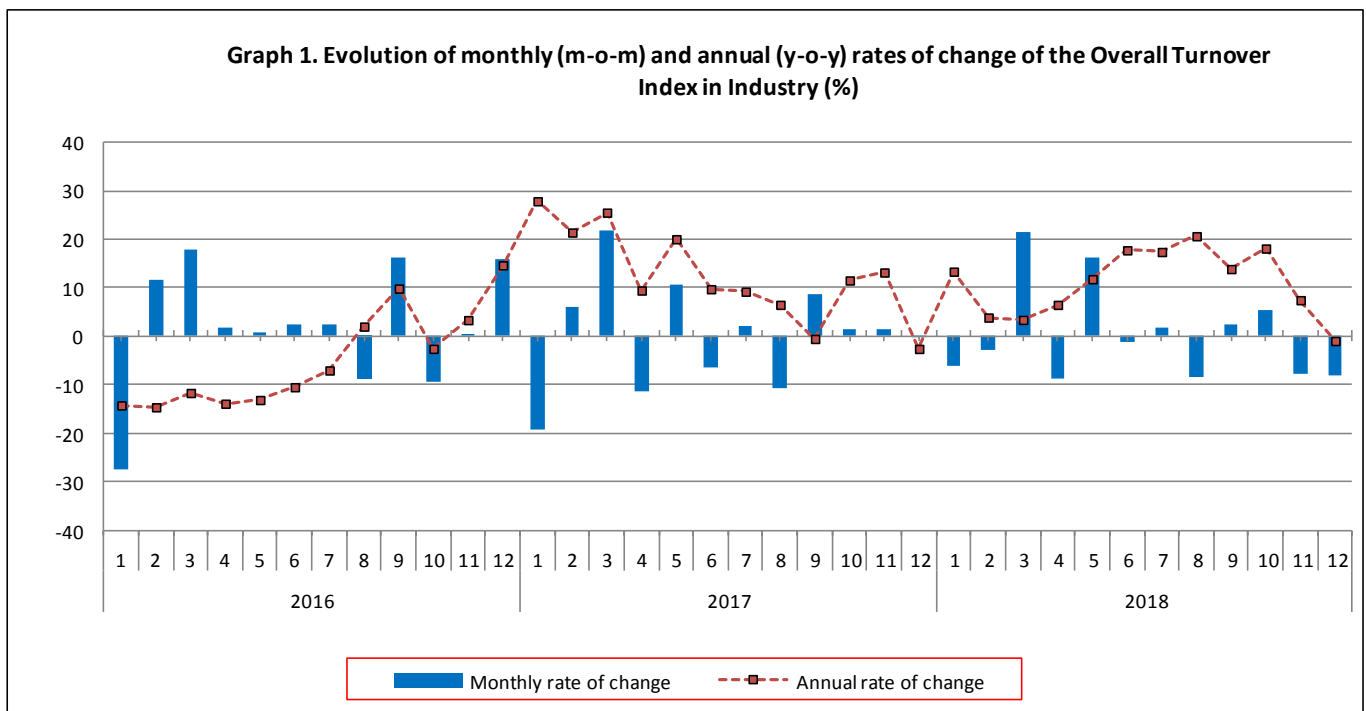
TURNOVER INDEX IN INDUSTRY: December 2018, y-o-y decrease of 0.9%

The evolution of the Turnover Index in Industry with base year 2010=100.0 for December 2018, on the basis of provisional data, is as follows:

The Overall Turnover Index in Industry (both domestic and non-domestic market) in December 2018 recorded a decrease of 0.9% compared with the corresponding index of December 2017. In December 2017, the corresponding annual rate of change of the Overall Turnover Index in Industry was -2.6% (Table 1).

The Overall Turnover Index in Industry in December 2018, compared with November 2018, recorded a decrease of 8.0% (Table 6).

The average Overall Turnover Index in Industry for the 12-month period from January 2018 to December 2018 increased by 11.1%, compared with the corresponding index of the 12-month period from January 2017 to December 2017. In December 2017, the corresponding annual rate of change of the Overall Turnover Index in Industry was 11.8% (Table 13).



Information:

Economic and Short-Term Indices Division
Production Indices Section
Diamantaki Aikaterini, Karathanos Panagiotis
Tel: +30 213 135 2122, 213 135 2706
Fax: +30 213 135 2738
E-mail: a.diamantaki@statistics.gr, p.karathanos@statistics.gr

Evolution of the Overall Turnover Index in Industry

I. Annual changes of the Overall Turnover Index in Industry: December 2018/December 2017

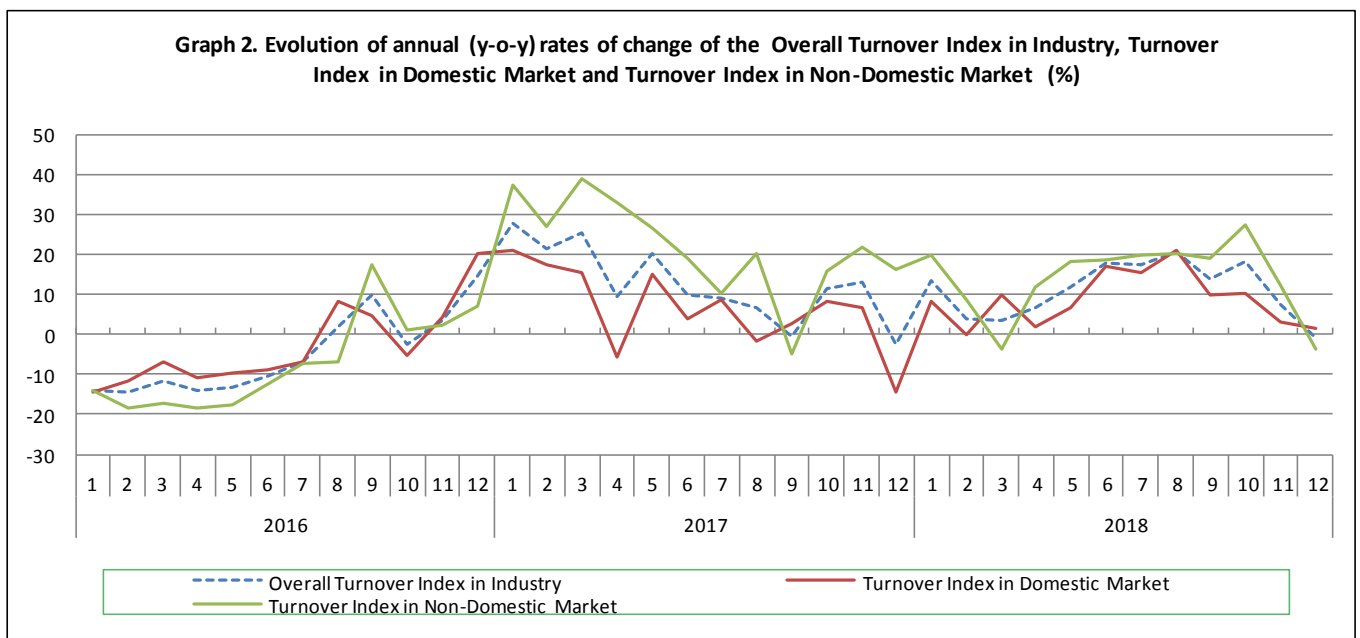
The 0.9% decrease in the Overall Turnover Index in Industry in December 2018, compared with the corresponding index in December 2017, was due to the following:

1. Changes in the sub-indices of the industrial sections (Table 1):

- The Turnover Index in Manufacturing decreased by 1.5%. The decrease was the result of the annual changes of the sub-indices in the following 2-digit divisions: textiles, wearing apparel, fabricated metal products, machinery and equipment n. e. c..
- The Turnover Index in Mining and quarrying increased by 38.0%. The increase was the result of the annual changes of the sub-indices in the following 2-digit divisions: mining of metal ores, other mining and quarrying products.

2. Changes in the sub-indices of the domestic and non-domestic market:

- The Turnover Index in Industry for the non-domestic market decreased by 3.7% (Table 3).
- The Turnover Index in Industry for the domestic market increased by 1.5% (Table 2).



II. Annual changes of the Turnover Index in Industry in the Domestic Market: December 2018/December 2017

The 1.5% increase of the Turnover Index in Industry for the domestic market in December 2018, compared with December 2017, is due to the following annual changes in the sub-indices of the following industrial sections (Table 2):

- The Turnover Index in Manufacturing increased by 1.5%. The increase was the result of the annual changes of the sub-indices in the following 2-digit divisions: beverages, tobacco products, chemicals and chemical products, basic pharmaceutical products and pharmaceutical preparations, electrical equipment.
- The Turnover Index in Mining and quarrying decreased by 0.7%. The decrease was the result of the annual changes of the sub-indices in the following 2-digit divisions: mining of coal and lignite, mining of metal ores.

III. Annual changes of the Turnover Index in Industry in the Non-Domestic Market: December 2018/December 2017

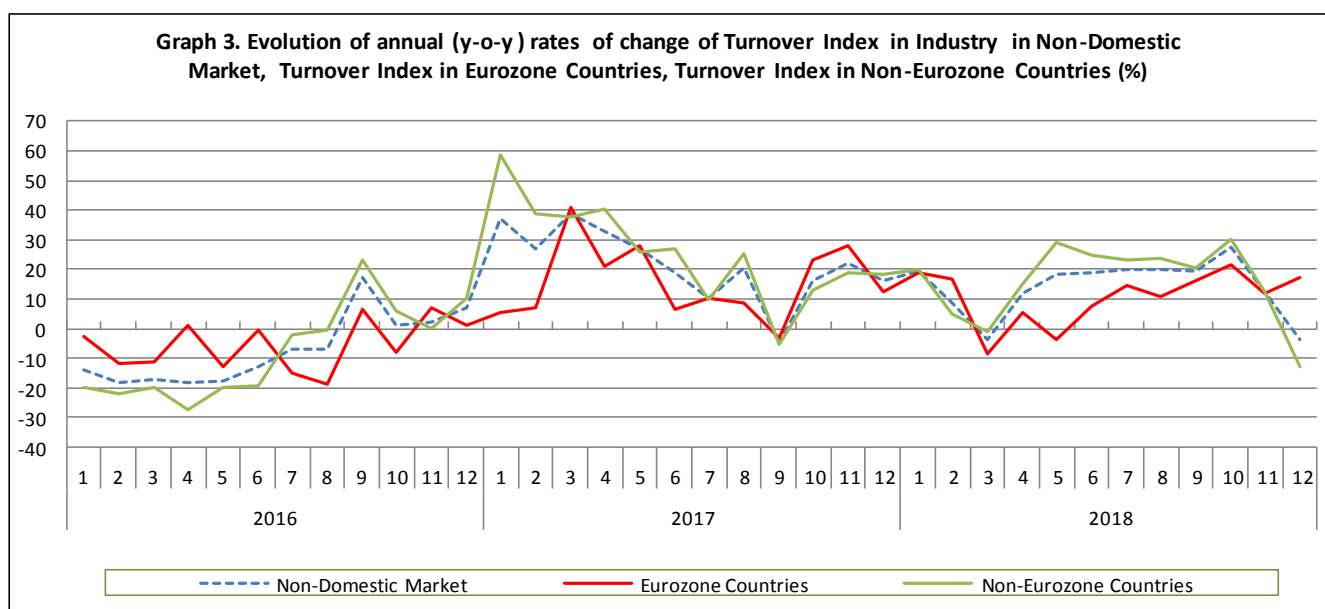
The 3.7% decrease of the Turnover Index in Industry for the Non-Domestic market in December 2018, compared with December 2017, was due to the following:

1. Changes in the sub-indices of the industrial sections (Table 3):

- The Turnover Index in Manufacturing decreased by 5.1%. The decrease was the result of the annual changes of the sub-indices in the following 2-digit divisions: textiles, wearing apparel, coke and refined petroleum products, fabricated metal products, electrical equipment.
- The Turnover Index in Mining and quarrying increased by 59.0%. The increase was the result of the annual changes of the sub-indices in the following 2-digit divisions: mining of metal ores, other mining and quarrying products.

2. Changes in the sub-indices for Eurozone and Non-Eurozone countries:

- The Turnover Index in Industry for non-Eurozone countries decreased by 12.7% (Table 5).
- The Turnover Index in Industry for Eurozone countries increased by 17.3% (Table 4).



IV. Monthly changes of the Overall Turnover Index in Industry: December 2018/ November 2018

The 8.0% decrease of the Overall Turnover Index in Industry in December 2018, compared with the corresponding index in November 2018, was due to the following:

1. Changes in the sub-indices of industrial sections (Table 6):

- The Turnover Index in Manufacturing decreased by 8.3%.
- The Turnover Index in Mining and quarrying increased by 9.0%.

2. Changes in the sub-indices of the domestic and non-domestic market:

- The Turnover Index in Industry for the domestic market decreased by 1.6% (Table 7).
- The Turnover Index in Industry for the non-domestic market decreased by 14.7% (Table 8).

Table 1. Annual rates of change of the Turnover Index in Industry: Total Market
Base year: 2010=100.0

Code	Division	Weights	December			Rate of change (%)	
			2018*	2017	2016	2018/2017	2017/2016
OVERALL INDEX			99.28	100.22	102.86	-0.9	-2.6
B	MINING AND QUARRYING	100.00	126.23	91.47	97.73	38.0	-6.4
05	Mining of coal and lignite	5.89	112.62	139.55	116.10	-19.3	20.2
06	Extraction of crude petroleum and natural gas	6.90	0.00	0.00	0.00	-	-
07	Mining of metal ores	16.67	216.37	162.44	122.16	33.2	33.0
08	Other mining and quarrying products	70.54	118.43	79.66	99.97	48.7	-20.3
C	MANUFACTURING	100.00	98.83	100.36	102.95	-1.5	-2.5
10	Food	18.21	80.82	83.22	87.01	-2.9	-4.4
11	Beverages	4.57	65.31	59.51	61.90	9.8	-3.9
12	Tobacco products	1.10	157.24	124.62	132.42	26.2	-5.9
13	Textiles	1.21	52.43	58.56	62.61	-10.5	-6.5
14	Wearing apparel	1.39	46.06	52.11	58.60	-11.6	-11.1
15	Leather and related products	0.28	24.24	31.46	40.70	-22.9	-22.7
16	Wood and cork	0.72	49.72	48.38	41.64	2.8	16.2
17	Paper and paper products	2.07	92.45	92.61	84.91	-0.2	9.1
18	Printing and recording services	1.21	48.43	53.14	55.93	-8.9	-5.0
19	Coke and refined petroleum products	33.96	124.41	128.04	125.43	-2.8	2.1
20	Chemicals and chemical products	4.97	88.46	83.37	75.74	6.1	10.1
21	Basic pharmaceutical products and pharmaceutical preparations	2.64	161.32	150.69	120.45	7.1	25.1
22	Rubber and plastic products	3.26	76.64	84.51	87.02	-9.3	-2.9
23	Other non-metallic mineral products	4.59	51.63	51.44	58.49	0.4	-12.1
24	Basic metals	9.70	110.93	108.21	140.67	2.5	-23.1
25	Fabricated metal products	3.25	69.06	80.40	77.77	-14.1	3.4
26	Computers, electronic and optical products	0.35	219.96	299.40	213.37	-26.5	40.3
27	Electrical equipment	2.43	82.04	80.79	87.14	1.5	-7.3
28	Machinery and equipment n. e. c.	0.88	100.13	120.84	126.96	-17.1	-4.8
29	Motor vehicles, trailers and semi-trailers	0.28	90.27	108.46	174.35	-16.8	-37.8
30	Other transport equipment	0.43	105.73	110.96	124.68	-4.7	-11.0
31	Furniture	0.84	64.90	68.72	60.41	-5.6	13.8
32	Other manufactured goods	0.25	105.46	109.95	104.11	-4.1	5.6
33	Repair and installation services of machinery and equipment	1.41	90.74	83.56	100.01	8.6	-16.5
MAIN INDUSTRIAL GROUPINGS							
1	Energy	33.61	123.95	127.63	124.98	-2.9	2.1
2	Intermediate goods	31.86	89.47	87.23	96.24	2.6	-9.4
3	Capital goods	4.57	93.83	102.65	118.39	-8.6	-13.3
4	Consumer Durables	1.53	78.12	101.36	81.57	-22.9	24.3
5	Consumer Non-Durables	28.43	83.16	81.94	82.80	1.5	-1.0

* Provisional data

Note: The indices and the percentage changes are rounded up to two and one decimal figures, respectively, when published.

Table 2. Annual rates of change of the Turnover Index in Industry: Domestic Market

Base year: 2010=100.0

Code	Division	Weights	December			Rate of change (%)	
			2018*	2017	2016	2018/2017	2017/2016
OVERALL INDEX			78.68	77.53	90.82	1.5	-14.6
B	MINING AND QUARRYING	100.00	54.07	54.45	66.56	-0.7	-18.2
05	Mining of coal and lignite	9.91	113.42	140.54	116.92	-19.3	20.2
06	Extraction of crude petroleum and natural gas	11.69	0.00	0.00	0.00	-	-
07	Mining of metal ores	10.57	94.10	104.90	116.84	-10.3	-10.2
08	Other mining and quarrying products	67.83	48.51	43.44	62.87	11.7	-30.9
C	MANUFACTURING	100.00	79.04	77.86	91.16	1.5	-14.6
10	Food	22.06	72.43	74.22	79.09	-2.4	-6.2
11	Beverages	6.16	62.78	56.38	59.20	11.4	-4.8
12	Tobacco products	0.97	124.82	100.98	90.73	23.6	11.3
13	Textiles	0.89	47.01	52.06	60.86	-9.7	-14.5
14	Wearing apparel	1.02	57.00	57.55	65.99	-1.0	-12.8
15	Leather and related products	0.34	25.50	33.67	39.59	-24.3	-15.0
16	Wood and cork	0.89	44.62	41.54	38.72	7.4	7.3
17	Paper and paper products	2.65	80.73	81.73	78.49	-1.2	4.1
18	Printing and recording services	1.72	44.37	47.33	51.91	-6.3	-8.8
19	Coke and refined petroleum products	31.51	99.21	96.12	114.09	3.2	-15.8
20	Chemicals and chemical products	4.60	92.05	82.00	69.04	12.3	18.8
21	Basic pharmaceutical products and pharmaceutical preparations	2.45	104.36	85.75	90.79	21.7	-5.6
22	Rubber and plastic products	3.01	60.19	66.57	71.73	-9.6	-7.2
23	Other non-metallic mineral products	5.66	38.84	40.21	41.64	-3.4	-3.4
24	Basic metals	5.72	75.00	74.97	189.58	0.1	-60.5
25	Fabricated metal products	3.47	52.96	60.32	55.49	-12.2	8.7
26	Computers, electronic and optical products	0.17	33.46	343.99	135.72	-90.3	153.5
27	Electrical equipment	1.82	78.16	63.72	68.21	22.7	-6.6
28	Machinery and equipment n. e. c.	0.77	52.97	65.82	52.74	-19.5	24.8
29	Motor vehicles, trailers and semi-trailers	0.27	111.68	135.10	226.81	-17.3	-40.4
30	Other transport equipment	0.40	137.31	139.93	146.89	-1.9	-4.7
31	Furniture	1.15	54.54	54.26	50.98	0.5	6.4
32	Other manufactured goods	0.27	74.39	73.17	72.18	1.7	1.4
33	Repair and installation services of machinery and equipment	2.03	90.74	83.56	100.01	8.6	-16.5
MAIN INDUSTRIAL GROUPINGS							
1	Energy	31.37	98.75	95.81	113.50	3.1	-15.6
2	Intermediate goods	28.94	69.24	68.05	89.39	1.8	-23.9
3	Capital goods	5.20	79.28	83.45	91.58	-5.0	-8.9
4	Consumer Durables	1.74	48.87	82.91	62.39	-41.1	32.9
5	Consumer Non-Durables	32.75	69.30	67.18	71.76	3.2	-6.4

* Provisional data

Note: The indices and the percentage changes are rounded up to two and one decimal figures, respectively, when published.

Table 3. Annual rates of change of the Turnover Index in Industry: Non-Domestic Market

Base year: 2010=100.0

Code	Division	Weights	December			Rate of change (%)	
			2018*	2017	2016	2018/2017	2017/2016
OVERALL INDEX			145.30	150.91	129.77	-3.7	16.3
B	MINING AND QUARRYING	100.00	230.38	144.90	142.70	59.0	1.5
05	Mining of coal and lignite	0.10	0.00	0.00	0.00	-	-
06	Extraction of crude petroleum and natural gas ⁽¹⁾	0.00	-	-	-	-	-
07	Mining of metal ores	25.44	289.48	196.85	125.34	47.1	57.1
08	Other mining and quarrying products	74.46	210.50	127.34	148.83	65.3	-14.4
C	MANUFACTURING	100.00	143.40	151.04	129.48	-5.1	16.7
10	Food	9.54	124.30	129.85	128.01	-4.3	1.4
11	Beverages	0.98	101.32	104.07	100.36	-2.6	3.7
12	Tobacco products	1.38	208.37	161.90	198.18	28.7	-18.3
13	Textiles	1.93	58.03	65.29	64.42	-11.1	1.4
14	Wearing apparel	2.21	34.68	46.44	50.91	-25.3	-8.8
15	Leather and related products	0.15	18.00	20.50	46.26	-12.2	-55.7
16	Wood and cork	0.37	76.84	84.72	57.15	-9.3	48.3
17	Paper and paper products	0.77	183.73	177.37	134.87	3.6	31.5
18	Printing and recording services	0.07	263.59	360.33	268.30	-26.9	34.3
19	Coke and refined petroleum products	39.47	169.73	185.45	145.84	-8.5	27.2
20	Chemicals and chemical products	5.82	82.06	85.81	87.67	-4.4	-2.1
21	Basic pharmaceutical products and pharmaceutical preparations	3.07	263.37	267.06	173.60	-1.4	53.8
22	Rubber and plastic products	3.82	105.91	116.41	114.20	-9.0	1.9
23	Other non-metallic mineral products	2.17	126.97	117.50	157.67	8.1	-25.5
24	Basic metals	18.67	135.73	131.16	106.90	3.5	22.7
25	Fabricated metal products	2.74	115.09	137.82	141.51	-16.5	-2.6
26	Computers, electronic and optical products	0.74	318.94	275.73	254.57	15.7	8.3
27	Electrical equipment	3.80	86.21	99.17	107.51	-13.1	-7.8
28	Machinery and equipment n. e. c.	1.13	172.50	205.27	240.84	-16.0	-14.8
29	Motor vehicles, trailers and semi-trailers	0.29	45.88	53.25	65.62	-13.9	-18.8
30	Other transport equipment	0.50	48.80	58.73	84.61	-16.9	-30.6
31	Furniture	0.17	227.49	295.80	208.41	-23.1	41.9
32	Other manufactured goods	0.21	193.35	213.97	194.41	-9.6	10.1
33	Repair and installation services of machinery and equipment	0.00	-	-	-	-	-
MAIN INDUSTRIAL GROUPINGS							
1	Energy	38.60	169.72	185.44	145.84	-8.5	27.2
2	Intermediate goods	38.39	123.55	119.55	107.79	3.3	10.9
3	Capital goods	3.16	147.30	173.26	216.98	-15.0	-20.2
4	Consumer Durables	1.06	186.83	169.95	152.84	9.9	11.2
5	Consumer Non-Durables	18.79	136.98	139.24	125.70	-1.6	10.8

* Provisional data

Note: The indices and the percentage changes are rounded up to two and one decimal figures, respectively, when published.

(1) The Index is not computed (base year value = 0).

Table 4. Annual rates of change of the Turnover Index in Industry: Eurozone Countries

Base year: 2010=100.0

Code	Sections and main groupings	December			Rate of change (%)	
		2018*	2017	2016	2018/2017	2017/2016
OVERALL INDEX		160.56	136.92	121.94	17.3	12.3
INDUSTRIAL SECTIONS						
B	MINING AND QUARRYING	179.71	154.90	160.97	16.0	-3.8
C	MANUFACTURING	160.04	136.43	120.86	17.3	12.9
MAIN INDUSTRIAL GROUPINGS						
1	Energy	396.74	202.69	142.95	95.7	41.8
2	Intermediate goods	125.99	116.93	114.99	7.8	1.7
3	Capital goods	155.20	125.51	180.09	23.7	-30.3
4	Consumer Durables	117.13	132.36	125.85	-11.5	5.2
5	Consumer Non-Durables	129.64	144.57	118.72	-10.3	21.8

* Provisional data

Table 5. Annual rates of change of the Turnover Index in Industry: Non-Eurozone Countries

Base year: 2010=100.0

Code	Sections and main groupings	December			Rate of change (%)	
		2018*	2017	2016	2018/2017	2017/2016
OVERALL INDEX		137.74	157.84	133.65	-12.7	18.1
INDUSTRIAL SECTIONS						
B	MINING AND QUARRYING	265.19	138.03	130.15	92.1	6.1
C	MANUFACTURING	135.22	158.23	133.72	-14.5	18.3
MAIN INDUSTRIAL GROUPINGS						
1	Energy	143.54	183.45	146.17	-21.8	25.5
2	Intermediate goods	121.70	121.54	102.35	0.1	18.7
3	Capital goods	143.13	198.46	236.45	-27.9	-16.1
4	Consumer Durables	293.38	227.40	194.11	29.0	17.2
5	Consumer Non-Durables	147.06	131.91	135.28	11.5	-2.5

* Provisional data

Note: The indices and the percentage changes are rounded up to two and one decimal figures, respectively, when published.

Table 6. Monthly rate of change of the Turnover Index in Industry: Total Market

Base year: 2010=100.0

Code	Sections and main groupings	December 2018*	November 2018**	Rate of change (%) Dec. 2018/Nov. 2018
OVERALL INDEX		99.28	107.87	-8.0
INDUSTRIAL SECTIONS				
B	MINING AND QUARRYING	126.23	115.78	9.0
C	MANUFACTURING	98.83	107.74	-8.3
MAIN INDUSTRIAL GROUPINGS				
1	Energy	123.95	129.06	-4.0
2	Intermediate goods	89.47	104.45	-14.3
3	Capital goods	93.83	88.66	5.8
4	Consumer Durables	78.12	56.31	38.7
5	Consumer Non-Durables	83.16	92.53	-10.1

Table 7. Monthly rate of change of the Turnover Index in Industry: Domestic Market

Base year: 2010=100.0

Code	Sections and main groupings	December 2018*	November 2018**	Rate of change (%) Dec. 2018/Nov. 2018
OVERALL INDEX		78.68	79.95	-1.6
INDUSTRIAL SECTIONS				
B	MINING AND QUARRYING	54.07	74.38	-27.3
C	MANUFACTURING	79.04	80.03	-1.2
MAIN INDUSTRIAL GROUPINGS				
1	Energy	98.75	89.68	10.1
2	Intermediate goods	69.24	80.42	-13.9
3	Capital goods	79.28	65.92	20.3
4	Consumer Durables	48.87	43.40	12.6
5	Consumer Non-Durables	69.30	74.38	-6.8

Table 8. Monthly rate of change of the Turnover Index in Industry: Non-Domestic Market

Base year: 2010=100.0

Code	Sections and main groupings	December 2018*	November 2018**	Rate of change (%) Dec. 2018/Nov. 2018
OVERALL INDEX		145.30	170.26	-14.7
INDUSTRIAL SECTIONS				
B	MINING AND QUARRYING	230.38	175.52	31.3
C	MANUFACTURING	143.40	170.14	-15.7
MAIN INDUSTRIAL GROUPINGS				
1	Energy	169.72	200.60	-15.4
2	Intermediate goods	123.55	144.94	-14.8
3	Capital goods	147.30	172.27	-14.5
4	Consumer Durables	186.83	104.32	79.1
5	Consumer Non-Durables	136.98	163.03	-16.0

* Provisional data ** Revised data

Note: The indices and the percentage changes are rounded up to two and one decimal figures, respectively, when published.

Table 9. Monthly rate of change of the Turnover Index in Industry: Eurozone Countries

Base year: 2010=100.0

Code	Sections and main groupings	December 2018*	November 2018**	Rate of change (%) Dec. 2018/Nov. 2018
OVERALL INDEX		160.56	177.01	-9.3
INDUSTRIAL SECTIONS				
B	MINING AND QUARRYING	179.71	188.47	-4.7
C	MANUFACTURING	160.04	176.69	-9.4
MAIN INDUSTRIAL GROUPINGS				
1	Energy	396.74	290.35	36.6
2	Intermediate goods	125.99	166.93	-24.5
3	Capital goods	155.20	173.82	-10.7
4	Consumer Durables	117.13	117.64	-0.4
5	Consumer Non-Durables	129.64	154.61	-16.2

* Provisional data ** Revised data

Table 10. Monthly rate of change of the Turnover Index in Industry: Non-Eurozone Countries

Base year: 2010=100.0

Code	Sections and main groupings	December 2018*	November 2018**	Rate of change (%) Dec. 2018/Nov. 2018
OVERALL INDEX		137.74	166.91	-17.5
INDUSTRIAL SECTIONS				
B	MINING AND QUARRYING	265.19	166.63	59.2
C	MANUFACTURING	135.22	166.92	-19.0
MAIN INDUSTRIAL GROUPINGS				
1	Energy	143.54	190.25	-24.6
2	Intermediate goods	121.70	128.31	-5.2
3	Capital goods	143.13	171.46	-16.5
4	Consumer Durables	293.38	83.96	249.5
5	Consumer Non-Durables	147.06	174.59	-15.8

* Provisional data ** Revised data

Note: The indices and the percentage changes are rounded up to two and one decimal figures, respectively, when published.

Table 11. Evolution of the Turnover Index in Industry (y-o-y changes): Total Market

Base year: 2010=100.0

Year and month	Overall Index (Total Market)		Turnover Index in Industry for the Domestic Market		Turnover Index in Industry for the Non-Domestic Market	
	Index	Annual rate of change (%)	Index	Annual rate of change (%)	Index	Annual rate of change (%)
2017: 12	100.22	-2.6	77.53	-14.6	150.91	16.3
2018** : 1	94.23	13.4	70.95	8.2	146.25	19.6
2	91.47	3.9	70.51	0.0	138.31	8.8
3	111.01	3.4	88.56	10.0	161.18	-3.6
4	101.33	6.5	73.94	1.9	162.56	11.7
5	117.70	11.8	89.39	6.7	180.97	18.1
6	116.13	17.8	95.97	17.1	161.16	18.7
7	118.10	17.4	96.84	15.6	165.61	20.0
8	108.29	20.7	90.03	21.1	149.09	20.1
9	110.93	13.9	88.76	10.0	160.48	19.2
10	116.83	18.2	86.39	10.4	184.84	27.5
11	107.87	7.5	79.95	3.3	170.26	12.3
12*	99.28	-0.9	78.68	1.5	145.30	-3.7

*Provisional data ** Revised data. The indices of the current year are revised after the inclusion of additional data from the enterprises.

Table 12. Evolution of the Turnover Index in Industry (y-o-y changes): Non-Domestic Market

Base year: 2010=100.0

Year and month	Overall Index (Non-Domestic Market)		Turnover Index in Industry for Eurozone Countries		Turnover Index in Industry for Non-Eurozone Countries	
	Index	Annual rate of change (%)	Index	Annual rate of change (%)	Index	Annual rate of change (%)
2017: 12	150.91	16.3	136.92	12.3	157.84	18.1
2018** : 1	146.25	19.6	135.69	19.1	151.48	19.9
2	138.31	8.8	142.71	16.6	136.13	5.1
3	161.18	-3.6	164.94	-8.4	159.32	-1.0
4	162.56	11.7	162.53	5.6	162.57	15.0
5	180.97	18.1	149.25	-3.5	196.69	28.9
6	161.16	18.7	154.57	7.8	164.43	24.6
7	165.61	20.0	165.20	14.3	165.81	23.0
8	149.09	20.1	119.05	10.7	163.98	24.0
9	160.48	19.2	150.99	16.0	165.19	20.7
10	184.84	27.5	172.31	21.3	191.05	30.4
11	170.26	12.3	177.01	11.9	166.91	12.5
12*	145.30	-3.7	160.56	17.3	137.74	-12.7

*Provisional data ** Revised data. The indices of the current year are revised after the inclusion of additional data from the enterprises.

Note: The indices and the percentage changes are rounded up to two and one decimal figures, respectively, when published.

Table 13. Average indices and rates of change (%) of the 12-month periods of Turnover Index in Industry: Total Market
Base year: 2010=100.0

Code	Division	Average Indices of 12-month periods			Rate of change (%) 2018/2017	Rate of change (%) 2017/2016
		Jan. 2018- Dec. 2018*	Jan. 2017- Dec. 2017	Jan. 2016- Dec. 2016		
	OVERALL INDEX	107.76	97.05	86.80	11.1	11.8
B	MINING AND QUARRYING	111.92	104.98	88.97	6.6	18.0
05	Mining of coal and lignite	129.04	122.11	65.54	5.7	86.3
06	Extraction of crude petroleum and natural gas	-	-	-	-	-
07	Mining of metal ores	153.11	130.94	121.35	16.9	7.9
08	Other mining and quarrying products	111.71	107.67	91.97	3.8	17.1
C	MANUFACTURING	107.69	96.91	86.76	11.1	11.7
10	Food	92.65	92.73	92.57	-0.1	0.2
11	Beverages	86.41	82.56	82.27	4.7	0.4
12	Tobacco products	133.49	114.86	125.35	16.2	-8.4
13	Textiles	71.25	72.62	68.38	-1.9	6.2
14	Wearing apparel	47.88	48.16	50.03	-0.6	-3.7
15	Leather and related products	34.06	36.72	40.54	-7.2	-9.4
16	Wood and cork	48.56	45.86	43.14	5.9	6.3
17	Paper and paper products	103.51	95.97	91.78	7.9	4.6
18	Printing and recording services	46.34	47.32	53.77	-2.1	-12.0
19	Coke and refined petroleum products	134.24	110.31	89.15	21.7	23.7
20	Chemicals and chemical products	106.24	99.23	94.84	7.1	4.6
21	Basic pharmaceutical products and pharmaceutical preparations	129.59	114.59	102.93	13.1	11.3
22	Rubber and plastic products	103.13	103.71	100.67	-0.6	3.0
23	Other non-metallic mineral products	60.67	60.72	59.01	-0.1	2.9
24	Basic metals	126.01	110.47	90.66	14.1	21.9
25	Fabricated metal products	85.09	83.77	80.72	1.6	3.8
26	Computers, electronic and optical products	159.36	146.54	128.25	8.8	14.3
27	Electrical equipment	83.41	87.27	79.08	-4.4	10.4
28	Machinery and equipment n. e. c.	83.65	85.55	83.62	-2.2	2.3
29	Motor vehicles, trailers and semi-trailers	77.12	87.47	72.11	-11.8	21.3
30	Other transport equipment	70.43	77.83	105.94	-9.5	-26.5
31	Furniture	57.59	51.12	51.63	12.7	-1.0
32	Other manufactured goods	95.30	96.10	90.32	-0.8	6.4
33	Repair and installation services of machinery and equipment	54.17	56.96	52.37	-4.9	8.8
	MAIN INDUSTRIAL GROUPINGS					
1	Energy	133.77	109.97	88.78	21.6	23.9
2	Intermediate goods	101.06	94.79	85.99	6.6	10.2
3	Capital goods	75.08	74.37	73.10	1.0	1.7
4	Consumer Durables	61.00	64.59	59.42	-5.6	8.7
5	Consumer Non-Durables	92.34	89.69	89.04	3.0	0.7

*Provisional data

Note: The indices and the percentage changes are rounded up to two and one decimal figures, respectively, when published.

METHODOLOGICAL NOTES

Generally	The Turnover Index is compiled since January 2006.
Purpose of the index	The purpose of this index is to measure the monthly activity of the industrial sector in terms of value. Turnover comprises the totals invoiced (without VAT) by the observation units during the reference period and corresponds to the market sales of goods or services supplied to third parties. The purposes and the characteristics of the Turnover Index apply, as well, to the indices for the distinction between domestic and non-domestic turnover.
Legal basis	The compilation and publication of the Turnover Index is based on the framework of requirements of Council Regulation (EC) No 1165/98 concerning short-term statistics (STS-R), as well as Regulation (EC) No 1158/05 of the European Parliament and Council amending Council Regulation (EC) No 1165/98. Furthermore, this index is governed by Regulation (EC) No 1893/2006 of the European Parliament and of the Council, by Commission Regulation (EC) No 656/2007 and by Regulation (EC) No 451/2008 of the Council.
Reference period	Month.
Base year	2010=100.0.
Revision	The latest revision of the Turnover Index in Industry (base year 2010=100.0) took place in the framework of Council Regulation (EC) No 1165/98 concerning short-term statistics. In accordance with this regulation the index is revised every five years, in years ending in 0 or 5.
Statistical classifications	At the level of categories of economic activities, the classification of NACE Rev. 2 was used (Regulation No 1893/2006), while at the level of main industrial groups, the allocation of two-digit and three-digit NACE Rev. 2 headings to categories of aggregate classification was used, in accordance with Commission Regulation No 656/2007. At product level, the Eurostat classification CPA 2008 was used, pursuant to Council Regulation No 451/2008.
Geographical coverage	The Index covers the whole Country.
Coverage of economic activities	The Turnover Index in Industry covers the whole country and is compiled for all activities listed in Sections C (mining and quarrying) and D (manufacturing) of the NACE Rev.2 classification.
Computation of the Index	The Turnover Index in Industry is a fixed base index. This index is calculated at a first stage at the four-digit level of economic activity and subsequently, with the implementation of appropriate weighting coefficients, the index is calculated at higher levels (three-level, two-level and one-level of economic activity) or at the level of Main Industrial Groupings (MIGs).
Publication of data	The Turnover Index in Industry (2010=100.0) is released since November 2014 with September 2014 as first reference month. Data with base year 2010=100.0 are available from January 2000 onwards.
References	More information about the methodology concerning the compilation and calculation of the index and for the time series is available on the website of the Hellenic Statistical Authority (ELSTAT) (http://www.statistics.gr/en/statistics/-/publication/DKT24/).