



PRESS RELEASE

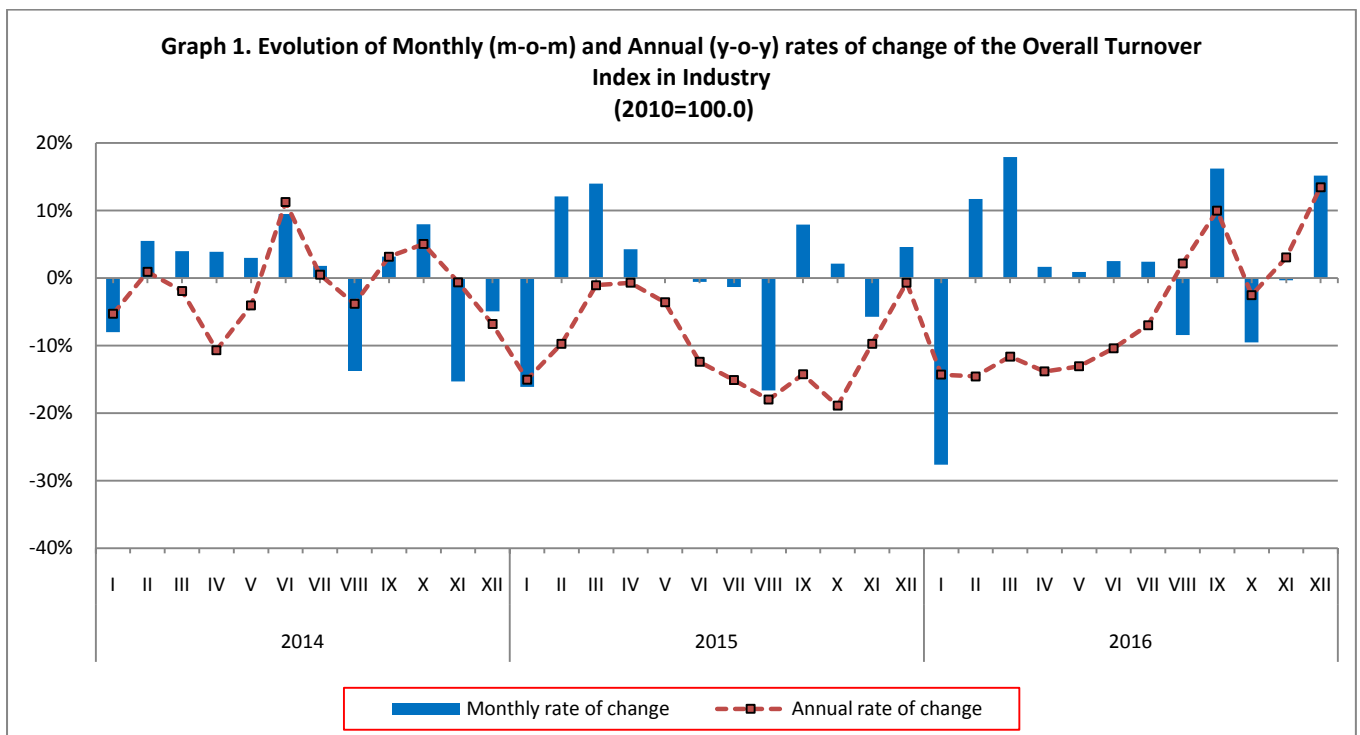
TURNOVER INDEX IN INDUSTRY: December 2016, y-o-y increase by 13.5%

The evolution of the Turnover Index in Industry with base year 2010=100.0 for December 2016, according to provisional data, is as follows:

The Overall Turnover Index in Industry (both domestic and non-domestic market) in December 2016 compared with the corresponding index of December 2015 recorded an increase of 13.5%. In December 2015 the annual rate of change of the Overall Turnover Index in Industry was -0.7% (Table 1).

The Overall Turnover Index in Industry in December 2016 compared with November 2016 recorded an increase of 15.2% (Table 6).

The average Overall Turnover Index in Industry for the 12-month period from January 2016 to December 2016, compared with the corresponding index of the 12-month period from January 2015 to December 2015, decreased by 5.1%. In December 2015, the corresponding annual rate of change of the Overall Turnover Index in Industry was -10.2% (Table 13).



Information:

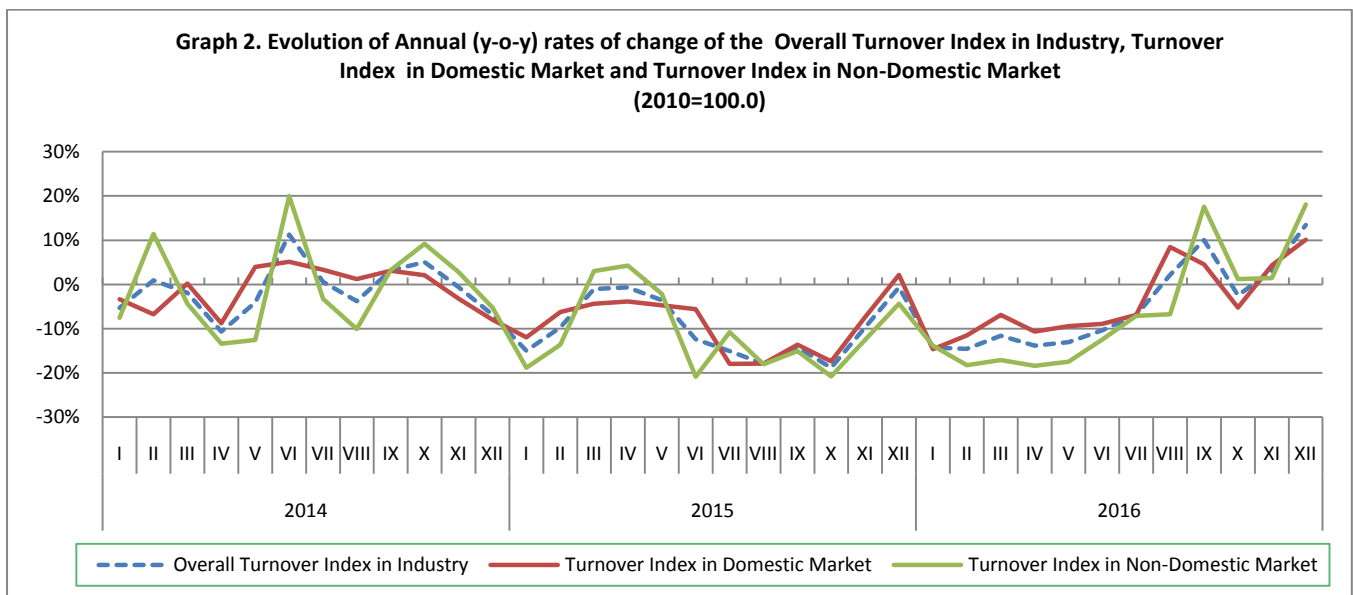
Economic and Short-Term Indices Division
Production Indices Section
Diamantaki Aikaterini - Karathanos Panagiotis
Tel: +30 213 1352122 – 2706 Fax: +30 213 1352738
a.diamantaki@statistics.gr , p.karathanos@statistics.gr

Comparison of the Overall Turnover Index in Industry in December 2016

I. Annual comparison of the Overall Turnover Index in Industry (Table 1)

The increase of the Overall Turnover Index in Industry by 13.5% in December 2016, compared with the corresponding index in December 2015, was due to the annual changes as following:

1. By Industrial Sections
 - Manufacturing turnover increased by 13.8%.
 - Mining and quarrying turnover decreased by 5.0%.
2. By kind of market
 - The Turnover Index in Industry for the domestic market increased by 10.1%.
 - The Turnover Index in Industry for the non-domestic market increased by 18.1%.



II. Annual comparison of the Turnover Index in Industry in Domestic Market (Table 2)

The increase of the Turnover Index in Industry for the domestic market by 10.1% in December 2016, compared with December 2015, is due to the following annual changes in the industrial sections:

- Mining and quarrying turnover increased by 3.1%.
- Manufacturing turnover increased by 10.2%.

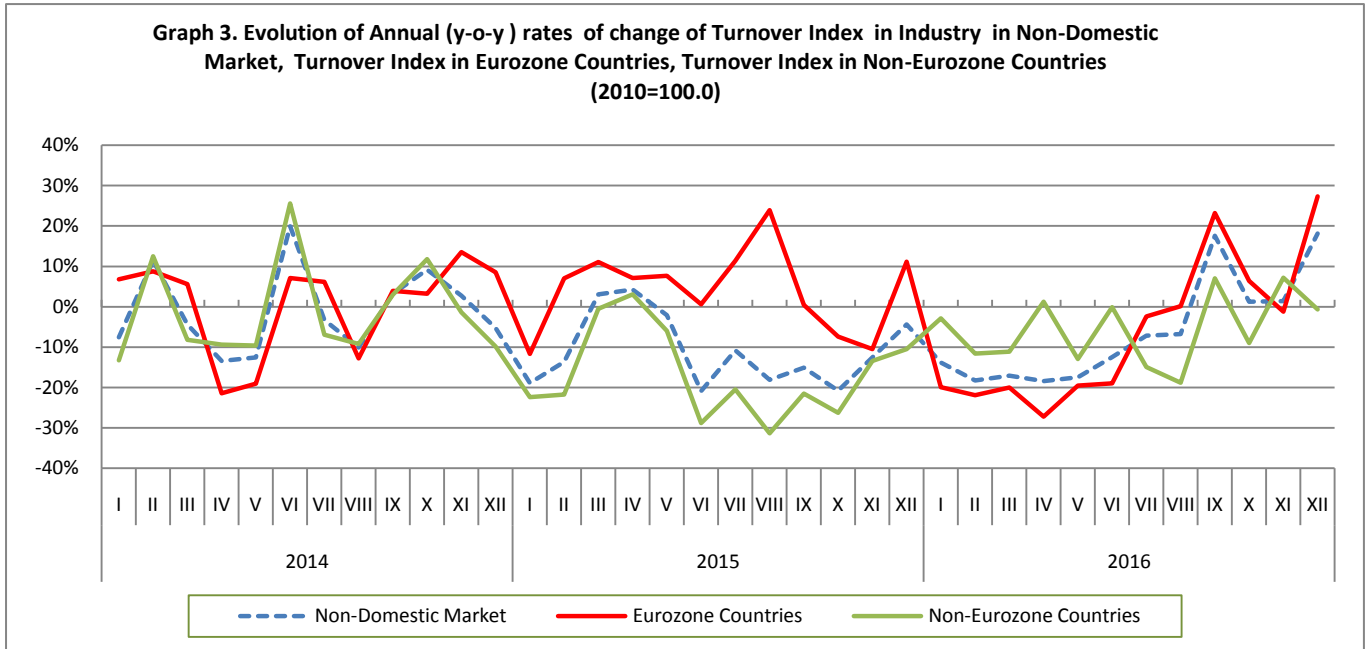
III. Annual comparison of the Turnover Index in Industry in Non-Domestic Market (Tables 3, 4, 5)

The increase of the Turnover Index in Industry for the Non-Domestic market by 18.1% in December 2016, compared with December 2015, was due to the annual changes as following:

1. By Industrial Sections
 - Manufacturing turnover increased by 18.9%.
 - Mining and quarrying turnover decreased by 10.0%.

2. By kind of market

- The Turnover Index in Industry for the non-Eurozone countries increased by 27.3%.
- The Turnover Index in Industry for the Eurozone countries decreased by 0.7%.



IV. Monthly comparison of the Overall Turnover Index in Industry (Tables 6, 7, 8)

The increase of the Overall Turnover Index in Industry by 15.2% in December 2016, compared with the corresponding index in November 2016, was due to the annual changes as following:

1. By Industrial Sections

- Manufacturing turnover increased by 15.5%.
- Mining and quarrying turnover decreased by 1.3%.

2. By kind of market

- The Turnover Index in Industry for the domestic market increased by 14.4%.
- The Turnover Index in Industry for the non-domestic market increased by 16.1%.

Table 1: Annual rates of change of the Turnover Index in Industry (Total Market)

Base year: 2010=100.0

Branch code	Branch name	Weights	December			Rate of change (%)	
			2016*	2015	2014	2016/2015	2015/2014
OVERALL INDEX			101.75	89.68	90.29	13.5	-0.7
B	MINING AND QUARRYING	100.00	96.09	101.15	88.00	-5.0	15.0
05	Mining of coal and lignite	5.89	116.10	98.51	231.86	17.9	-57.5
06	Extraction of crude petroleum and natural gas	6.90	0.00	0.00	0.00	-	-
07	Mining of metal ores	16.67	112.39	149.17	92.55	-24.7	61.2
08	Other mining and quarrying products	70.54	99.96	99.92	83.54	0.0	19.6
Г	MANUFACTURING	100.00	101.85	89.49	90.33	13.8	-0.9
10	Food	18.21	86.36	92.10	86.09	-6.2	7.0
11	Beverages	4.57	63.16	64.88	64.65	-2.7	0.4
12	Tobacco products	1.10	132.81	128.37	132.36	3.5	-3.0
13	Textiles	1.21	63.07	53.54	51.68	17.8	3.6
14	Wearing apparel	1.39	59.83	64.10	61.24	-6.7	4.7
15	Leather and related products	0.28	40.84	45.98	32.20	-11.2	42.8
16	Wood and cork	0.72	41.97	43.55	44.76	-3.6	-2.7
17	Paper and paper products	2.07	84.24	90.00	89.79	-6.4	0.2
18	Printing and recording services	1.21	55.41	59.72	68.45	-7.2	-12.8
19	Coke and refined petroleum products	33.96	125.43	99.32	110.51	26.3	-10.1
20	Chemicals and chemical products	4.97	76.03	80.51	73.51	-5.6	9.5
21	Basic pharmaceutical products and pharmaceutical preparations	2.64	120.04	135.25	101.75	-11.2	32.9
22	Rubber and plastic products	3.26	87.16	86.00	87.59	1.4	-1.8
23	Other non-metallic mineral products	4.59	58.59	57.16	52.73	2.5	8.4
24	Basic metals	9.70	130.05	70.11	86.20	85.5	-18.7
25	Fabricated metal products	3.25	76.74	80.53	68.25	-4.7	18.0
26	Computers, electronic and optical products	0.35	213.37	303.97	114.23	-29.8	166.1
27	Electrical equipment	2.43	87.01	91.68	63.67	-5.1	44.0
28	Machinery and equipment n. e. c.	0.88	126.94	116.97	115.03	8.5	1.7
29	Motor vehicles, trailers and semi-trailers	0.28	174.35	142.25	107.13	22.6	32.8
30	Other transport equipment	0.43	124.71	145.80	43.86	-14.5	232.4
31	Furniture	0.84	60.18	71.28	60.95	-15.6	17.0
32	Other manufactured goods	0.25	106.91	101.63	83.51	5.2	21.7
33	Repair and installation services of machinery and equipment	1.41	100.20	102.16	127.03	-1.9	-19.6
MAIN INDUSTRIAL GROUPINGS							
1	Energy	33.61	124.98	98.98	110.48	26.3	-10.4
2	Intermediate goods	31.86	92.99	77.72	77.69	19.7	0.0
3	Capital goods	4.57	117.95	109.45	98.49	7.8	11.1
4	Consumer Durables	1.53	81.23	108.08	61.76	-24.9	75.0
5	Consumer Non-Durables	28.43	82.65	87.92	80.79	-6.0	8.8

* Provisional data

Note: The indices are rounded up to two decimal figures when published and percentage changes are rounded up to one decimal figure when published.

Table 2: Annual rates of change of the Turnover Index in Industry for the Domestic Market

Base year: 2010=100.0

Branch code	Branch name	Weights	December			Rate of change (%)	
			2016*	2015	2014	2016/2015	2015/2014
OVERALL INDEX			83.28	75.61	74.02	10.1	2.2
B	MINING AND QUARRYING	100.00	67.62	65.60	77.10	3.1	-14.9
05	Mining of coal and lignite	9.91	116.92	99.21	233.51	17.9	-57.5
06	Extraction of crude petroleum and natural gas	11.69	0.00	0.00	0.00	-	-
07	Mining of metal ores	10.57	127.08	131.74	105.91	-3.5	24.4
08	Other mining and quarrying products	67.83	62.84	61.70	63.13	1.8	-2.3
Г	MANUFACTURING	100.00	83.50	75.75	73.98	10.2	2.4
10	Food	22.06	78.16	85.39	80.26	-8.5	6.4
11	Beverages	6.16	60.55	63.28	62.85	-4.3	0.7
12	Tobacco products	0.97	90.94	92.69	90.72	-1.9	2.2
13	Textiles	0.89	61.44	53.57	52.39	14.7	2.3
14	Wearing apparel	1.02	67.50	73.99	63.49	-8.8	16.5
15	Leather and related products	0.34	39.72	48.14	36.64	-17.5	31.4
16	Wood and cork	0.89	39.12	38.32	36.38	2.1	5.3
17	Paper and paper products	2.65	78.44	83.66	84.80	-6.2	-1.3
18	Printing and recording services	1.72	51.39	57.03	65.47	-9.9	-12.9
19	Coke and refined petroleum products	31.51	114.09	80.09	85.93	42.5	-6.8
20	Chemicals and chemical products	4.60	69.55	76.20	59.22	-8.7	28.7
21	Basic pharmaceutical products and pharmaceutical preparations	2.45	91.08	111.45	92.94	-18.3	19.9
22	Rubber and plastic products	3.01	71.98	72.69	73.85	-1.0	-1.6
23	Other non-metallic mineral products	5.66	41.72	42.89	42.78	-2.7	0.3
24	Basic metals	5.72	57.08	42.69	55.25	33.7	-22.7
25	Fabricated metal products	3.47	54.52	58.35	48.72	-6.6	19.8
26	Computers, electronic and optical products	0.17	135.72	319.20	12.92	-57.5	2370.7
27	Electrical equipment	1.82	68.14	79.28	37.80	-14.1	109.8
28	Machinery and equipment n. e. c.	0.77	52.77	59.85	60.20	-11.8	-0.6
29	Motor vehicles, trailers and semi-trailers	0.27	226.81	192.68	137.50	17.7	40.1
30	Other transport equipment	0.40	147.07	162.83	32.00	-9.7	408.9
31	Furniture	1.15	50.90	62.18	51.41	-18.1	20.9
32	Other manufactured goods	0.27	76.89	78.88	62.43	-2.5	26.3
33	Repair and installation services of machinery and equipment	2.03	100.20	102.16	127.03	-1.9	-19.6
MAIN INDUSTRIAL GROUPINGS							
1	Energy	31.37	113.50	79.75	86.13	42.3	-7.4
2	Intermediate goods	28.94	63.74	63.64	61.35	0.2	3.7
3	Capital goods	5.20	91.21	93.78	84.37	-2.7	11.2
4	Consumer Durables	1.74	62.24	88.88	48.56	-30.0	83.0
5	Consumer Non-Durables	32.75	71.48	78.63	73.33	-9.1	7.2

* Provisional data

Note: The indices are rounded up to two decimal figures when published and percentage changes are rounded up to one decimal figure when published.

Table 3: Annual rates of change of the Turnover Index in Industry for the Non - Domestic Market

Base year: 2010=100.0

Branch code	Branch name	Weights	December			Rate of change (%)	
			2016*	2015	2014	2016/2015	2015/2014
OVERALL INDEX			143.03	121.12	126.66	18.1	-4.4
B	MINING AND QUARRYING	100.00	137.17	152.47	103.72	-10.0	47.0
05	Mining of coal and lignite	0.10	0.00	0.00	0.00	-	-
06	Extraction of crude petroleum and natural gas ⁽²⁾	0.00	-	-	-	-	-
07	Mining of metal ores	25.44	103.61	159.60	84.56	-35.1	88.7
08	Other mining and quarrying products	74.46	148.83	150.24	110.41	-0.9	36.1
Г	MANUFACTURING	100.00	143.16	120.41	127.17	18.9	-5.3
10	Food	9.54	128.87	126.83	116.29	1.6	9.1
11	Beverages	0.98	100.29	87.62	90.28	14.5	-2.9
12	Tobacco products	1.38	198.86	184.67	198.06	7.7	-6.8
13	Textiles	1.93	64.75	53.51	50.95	21.0	5.0
14	Wearing apparel	2.21	51.85	53.80	58.90	-3.6	-8.7
15	Leather and related products	0.15	46.40	35.25	10.13	31.6	248.1
16	Wood and cork	0.37	57.15	71.34	89.29	-19.9	-20.1
17	Paper and paper products	0.77	129.40	139.33	128.65	-7.1	8.3
18	Printing and recording services	0.07	268.25	201.74	226.33	33.0	-10.9
19	Coke and refined petroleum products	39.47	145.84	133.93	154.72	8.9	-13.4
20	Chemicals and chemical products	5.82	87.59	88.18	98.96	-0.7	-10.9
21	Basic pharmaceutical products and pharmaceutical preparations	3.07	171.93	177.89	117.53	-3.4	51.4
22	Rubber and plastic products	3.82	114.18	109.68	112.03	4.1	-2.1
23	Other non-metallic mineral products	2.17	157.89	141.15	111.30	11.9	26.8
24	Basic metals	18.67	180.42	89.04	107.57	102.6	-17.2
25	Fabricated metal products	2.74	140.27	143.96	124.13	-2.6	16.0
26	Computers, electronic and optical products	0.74	254.57	295.88	168.00	-14.0	76.1
27	Electrical equipment	3.80	107.33	105.01	91.52	2.2	14.7
28	Machinery and equipment n. e. c.	1.13	240.75	204.61	199.17	17.7	2.7
29	Motor vehicles, trailers and semi-trailers	0.29	65.62	37.73	44.18	73.9	-14.6
30	Other transport equipment	0.50	84.39	115.10	65.26	-26.7	76.4
31	Furniture	0.17	206.00	214.20	210.64	-3.8	1.7
32	Other manufactured goods	0.21	191.83	165.99	143.12	15.6	16.0
33	Repair and installation services of machinery and equipment	0.00	-	-	-	-	-
MAIN INDUSTRIAL GROUPINGS							
1	Energy	38.60	145.84	133.92	154.71	8.9	-13.4
2	Intermediate goods	38.39	142.29	101.44	105.23	40.3	-3.6
3	Capital goods	3.16	216.26	167.05	150.40	29.5	11.1
4	Consumer Durables	1.06	151.81	179.46	110.84	-15.4	61.9
5	Consumer Non-Durables	18.79	126.05	124.01	109.76	1.7	13.0

* Provisional data

Notes:

- The indices are rounded up to two decimal figures when published and percentage changes are rounded up to one decimal figure when published.
- The Index is not computed (base year value = 0)

Table 4: Annual rates of change of the Turnover Index in Industry for the Eurozone Countries

Base year: 2010=100.0

Branch code	Branch name	December			Rate of change (%)	
		2016*	2015	2014	2016/2015	2015/2014
OVERALL INDEX		119.91	120.69	108.59	-0.7	11.1
INDUSTRIAL SECTIONS						
B	MINING AND QUARRYING	147.39	140.15	101.82	5.2	37.6
C	MANUFACTURING	119.15	120.15	108.78	-0.8	10.5
MAIN INDUSTRIAL GROUPINGS						
1	Energy	142.95	189.39	199.80	-24.5	-5.2
2	Intermediate goods	111.72	101.54	95.49	10.0	6.3
3	Capital goods	179.23	149.51	86.25	19.9	73.3
4	Consumer Durables	125.23	110.08	109.91	13.8	0.2
5	Consumer Non-Durables	117.64	122.31	97.24	-3.8	25.8

* Provisional data

Table 5: Annual rates of change of the Turnover Index in Industry for the Non - Eurozone Countries

Base year: 2010=100.0

Branch code	Branch name	December			Rate of change (%)	
		2016*	2015	2014	2016/2015	2015/2014
OVERALL INDEX		154.49	121.33	135.61	27.3	-10.5
INDUSTRIAL SECTIONS						
B	MINING AND QUARRYING	130.15	160.93	105.03	-19.1	53.2
C	MANUFACTURING	154.98	120.54	136.22	28.6	-11.5
MAIN INDUSTRIAL GROUPINGS						
1	Energy	146.17	127.52	149.51	14.6	-14.7
2	Intermediate goods	165.40	101.37	112.60	63.2	-10.0
3	Capital goods	235.80	176.31	184.25	33.7	-4.3
4	Consumer Durables	192.45	285.52	112.25	-32.6	154.4
5	Consumer Non-Durables	137.60	126.34	126.96	8.9	-0.5

* Provisional data

Note: The indices are rounded up to two decimal figures when published and percentage changes are rounded up to one decimal figure when published.

Table 6: Monthly rate of change of the Turnover Index in Industry (Total Market)

Base year: 2010=100.0

Branch code	Branch name	December 2016*	November 2016**	Rate of change (%) Dec.16/Nov.16
OVERALL INDEX		101.75	88.36	15.2
INDUSTRIAL SECTIONS				
B	MINING AND QUARRYING	96.09	97.39	-1.3
C	MANUFACTURING	101.85	88.21	15.5
MAIN INDUSTRIAL GROUPINGS				
1	Energy	124.98	93.89	33.1
2	Intermediate goods	92.99	87.00	6.9
3	Capital goods	117.95	83.98	40.5
4	Consumer Durables	81.23	62.41	30.2
5	Consumer Non-Durables	82.65	85.46	-3.3

Table 7: Monthly rate of change of the Turnover Index in Industry for the Domestic Market

Base year: 2010=100.0

Branch code	Branch name	December 2016*	November 2016**	Rate of change (%) Dec.16/Nov.16
OVERALL INDEX		83.28	72.78	14.4
INDUSTRIAL SECTIONS				
B	MINING AND QUARRYING	67.62	69.00	-2.0
C	MANUFACTURING	83.50	72.83	14.7
MAIN INDUSTRIAL GROUPINGS				
1	Energy	113.50	76.98	47.4
2	Intermediate goods	63.74	69.49	-8.3
3	Capital goods	91.21	59.83	52.5
4	Consumer Durables	62.24	47.09	32.2
5	Consumer Non-Durables	71.48	75.09	-4.8

Table 8: Monthly rate of change of the Turnover Index in Industry for the Non - Domestic Market

Base year: 2010=100.0

Branch code	Branch name	December 2016*	November 2016**	Rate of change (%) Dec.16/Nov.16
OVERALL INDEX		143.03	123.19	16.1
INDUSTRIAL SECTIONS				
B	MINING AND QUARRYING	137.17	138.36	-0.9
C	MANUFACTURING	143.16	122.85	16.5
MAIN INDUSTRIAL GROUPINGS				
1	Energy	145.84	124.60	17.1
2	Intermediate goods	142.29	116.51	22.1
3	Capital goods	216.26	172.79	25.2
4	Consumer Durables	151.81	119.36	27.2
5	Consumer Non-Durables	126.05	125.77	0.2

* Provisional data ** Revised data

Note: The indices are rounded up to two decimal figures when published and percentage changes are rounded up to one decimal figure when published.

Table 9: Monthly rate of change of the Turnover Index in Industry for the Eurozone Countries

Base year: 2010=100.0

Branch code	Branch name	December 2016*	November 2016**	Rate of change (%) Dec.16/Nov.16
OVERALL INDEX		119.91	123.65	-3.0
INDUSTRIAL SECTIONS				
B	MINING AND QUARRYING	147.39	159.82	-7.8
C	MANUFACTURING	119.15	122.65	-2.9
MAIN INDUSTRIAL GROUPINGS				
1	Energy	142.95	129.92	10.0
2	Intermediate goods	111.72	120.32	-7.2
3	Capital goods	179.23	180.51	-0.7
4	Consumer Durables	125.23	130.16	-3.8
5	Consumer Non-Durables	117.64	120.33	-2.2

* Provisional data **Revised data

Table 10: Monthly rate of change of the Turnover Index in Industry for the Non - Eurozone Countries

Base year: 2010=100.0

Branch code	Branch name	December 2016*	November 2016**	Rate of change (%) Dec.16/Nov.16
OVERALL INDEX		154.49	122.95	25.7
INDUSTRIAL SECTIONS				
B	MINING AND QUARRYING	130.15	123.61	5.3
C	MANUFACTURING	154.98	122.94	26.1
MAIN INDUSTRIAL GROUPINGS				
1	Energy	146.17	123.98	17.9
2	Intermediate goods	165.40	113.63	45.6
3	Capital goods	235.80	168.71	39.8
4	Consumer Durables	192.45	102.86	87.1
5	Consumer Non-Durables	137.60	133.24	3.3

* Provisional data ** Revised data

Note: The indices are rounded up to two decimal figures when published and percentage changes are rounded up to one decimal figure when published.

Table 11: Evolution of the Turnover Index in Industry (Total Market) - y-o-y changes

Base year: 2010=100.0

Year-month	Overall Index (Total Market)		Turnover Index in Industry for the Domestic Market		Turnover Index in Industry for the Non - Domestic Market	
	Index	Annual rate of change (%)	Index	Annual rate of change (%)	Index	Annual rate of change (%)
2015 XII	89.68	-0.7	75.61	2.2	121.12	-4.4
2016 I	64.91	-14.3	54.08	-14.6	89.10	-13.9
II	72.52	-14.6	60.16	-11.6	100.14	-18.3
III	85.52	-11.6	69.89	-6.9	120.43	-17.1
IV	86.93	-13.8	76.89	-10.7	109.36	-18.4
V	87.70	-13.1	72.83	-9.5	120.93	-17.5
VI	89.91	-10.4	78.99	-9.0	114.33	-12.5
VII	92.07	-7.0	77.16	-6.9	125.40	-7.1
VIII	84.30	2.1	75.78	8.5	103.36	-6.8
XI	97.98	10.0	78.52	4.6	141.47	17.6
X	88.66	-2.5	72.37	-5.3	125.07	1.2
XI	88.36	3.1	72.78	4.3	123.19	1.4
XII*	101.75	13.5	83.28	10.1	143.03	18.1

*Provisional data

Table 12: Evolution of the Turnover Index in Industry for the Non – Domestic Market - y-o-y changes

Base year: 2010=100.0

Year-month	Overall Index (Non - Domestic Market)		Turnover Index in Industry for Eurozone Countries		Turnover Index in Industry for Non - Eurozone Countries	
	Index	Annual rate of change (%)	Index	Annual rate of change (%)	Index	Annual rate of change (%)
2015 XII	121.12	-4.4	120.69	11.1	121.33	-10.5
2016 I	89.10	-13.9	108.23	-2.9	79.62	-19.9
II	100.14	-18.3	114.20	-11.7	93.17	-21.9
III	120.43	-17.1	127.54	-11.1	116.91	-20.0
IV	109.36	-18.4	127.17	1.3	100.53	-27.3
V	120.93	-17.5	120.55	-12.9	121.12	-19.6
VI	114.33	-12.5	134.99	-0.1	104.08	-19.0
VII	125.40	-7.1	131.42	-14.9	122.42	-2.4
VIII	103.36	-6.8	98.54	-18.8	105.74	0.1
XI	141.47	17.6	134.71	7.0	144.81	23.2
X	125.07	1.2	114.43	-9.0	130.34	6.4
XI	123.19	1.4	123.65	7.2	122.95	-1.3
XII*	143.03	18.1	119.91	-0.7	154.49	27.3

*Provisional data

Note: The indices are rounded up to two decimal figures when published and percentage changes are rounded up to one decimal figure when published.

Table 13: Average indices and rates of change (%) of the 12-month periods of Turnover Index in Industry (Total Market)

Base year: 2010=100.0

Branch code	Branch name	Average Indices of 12-month periods			Rate of change (%) 2016/2015	Rate of change (%) 2015/2014
		Jan. 2016- Dec. 2016*	Jan. 2015- Dec. 2015	Jan. 2014- Dec. 2014		
OVERALL INDEX		86.72	91.38	101.70	-5.1	-10.2
B	MINING AND QUARRYING	88.78	89.40	92.09	-0.7	-2.9
05	Mining of coal and lignite	65.54	156.31	187.87	-58.1	-16.8
06	Extraction of crude petroleum and natural gas	-	-	-	-	-
07	Mining of metal ores	120.54	113.32	121.10	6.4	-6.4
08	Other mining and quarrying products	91.88	86.92	86.26	5.7	0.8
C	MANUFACTURING	86.68	91.41	101.86	-5.2	-10.3
10	Food	92.69	95.98	94.62	-3.4	1.4
11	Beverages	82.38	80.43	79.69	2.4	0.9
12	Tobacco products	125.38	122.69	99.89	2.2	22.8
13	Textiles	68.44	66.26	64.62	3.3	2.5
14	Wearing apparel	50.19	52.52	64.58	-4.4	-18.7
15	Leather and related products	40.63	36.83	38.76	10.3	-5.0
16	Wood and cork	42.86	42.18	41.98	1.6	0.5
17	Paper and paper products	91.73	92.97	91.49	-1.3	1.6
18	Printing and recording services	53.31	54.09	57.95	-1.4	-6.7
19	Coke and refined petroleum products	89.15	101.82	136.49	-12.5	-25.4
20	Chemicals and chemical products	94.93	95.53	94.07	-0.6	1.6
21	Basic pharmaceutical products and pharmaceutical preparations	102.90	100.65	94.31	2.2	6.7
22	Rubber and plastic products	100.66	104.97	99.67	-4.1	5.3
23	Other non-metallic mineral products	59.02	55.31	58.08	6.7	-4.8
24	Basic metals	89.58	90.66	89.24	-1.2	1.6
25	Fabricated metal products	80.64	76.05	76.13	6.0	-0.1
26	Computers, electronic and optical products	128.25	141.04	100.50	-9.1	40.3
27	Electrical equipment	79.07	77.19	69.22	2.4	11.5
28	Machinery and equipment n. e. c.	83.73	86.30	82.79	-3.0	4.3
29	Motor vehicles, trailers and semi-trailers	72.11	70.67	64.54	2.0	9.5
30	Other transport equipment	105.94	99.87	25.37	6.1	293.6
31	Furniture	51.94	48.84	48.52	6.4	0.7
32	Other manufactured goods	90.56	85.30	81.19	6.2	5.1
33	Repair and installation services of machinery and equipment	52.38	57.11	70.34	-8.3	-18.8
MAIN INDUSTRIAL GROUPINGS						
1	Energy	88.78	101.64	136.18	-12.7	-25.4
2	Intermediate goods	85.66	86.15	84.75	-0.6	1.7
3	Capital goods	73.08	70.86	67.04	3.1	5.7
4	Consumer Durables	59.58	61.52	57.93	-3.2	6.2
5	Consumer Non-Durables	89.13	90.01	87.88	-1.0	2.4

*Provisional data

Note: The indices are rounded up to two decimal figures when published and percentage changes are rounded up to one decimal figure when published.

METHODOLOGICAL NOTES

Generally	The Turnover Index is being compiled since January 2006.
Purpose of the index	The purpose of this index is to measure the monthly activity of the industrial sector in terms of value. Turnover comprises the totals invoiced (without VAT) by the observation units during the reference period and corresponds to the market sales of goods or services supplied to third parties. The purposes and the characteristics of the Turnover Index apply, as well, to the indices for the distinction between domestic and non-domestic turnover.
Legal basis	The compilation and publication of the Turnover Index is based on the framework of requirements of the Council Regulation (EC) No 1165/98 concerning short-term statistics (STS-R), as well as the amendment Regulation (EC) No 1158/05 of the European Parliament and Council, amending the Council Regulation (EC) No 1165/98. Furthermore, this index is governed by the Regulation (EC) No.1893/2006 of the European Parliament and of the Council, by the Commission Regulation (EC) No.656/2007 and by the Regulation (EC) No.451/2008 of the Council.
Reference period	Month
Base year	2010=100.0.
Revision	The last revision of the Turnover Index in Industry with base year 2010=100.0 has been done in the framework of the Short – Term Statistics (STS) Council Regulation (EC) No 1165/98 concerning short-term statistics. According to this regulation the index in question is revised every five years, in years ending in 0 or 5.
Statistical classifications	At the level of categories of economic activities, the classification of NACE Rev. 2 was used (Regulation 1893/2006), while at the level of main industrial groups, the allocation of two-digit and three-digit NACE Rev. 2 headings to categories of aggregate classification was used, in accordance with the Commission Regulation 656/2007. At product level, the Eurostat classification CPA 2008 was used, according to the Council Regulation 451/2008.
Geographical coverage	The Index covers the whole country.
Coverage of economic activities	The Turnover Index in Industry covers the whole country and is compiled for all activities listed in Sections C (mining and quarrying) and D (manufacturing) of the NACE Rev.2 classification.
Computation of the Index	The Turnover Index in Industry is a fixed base index. This index is calculated initially at the four-digit level of economic activity and subsequently, with the implementation of appropriate weighting coefficients, the index is calculated at higher levels (three-level, two-level and one-level of economic activity) or at the level of Main Industrial Groupings (MIGs).
Publication of data	The Turnover Index with base year 2010=100.0 is being released since November 2014 with September 2014 as first reference month. Data with base year 2010=100.0 are available from January 2000 onwards.
References	More information about the methodology concerning the compilation and calculation of the index and for the time series is available on the Hellenic Statistical Authority (ELSTAT) website (http://www.statistics.gr/en/home/).