



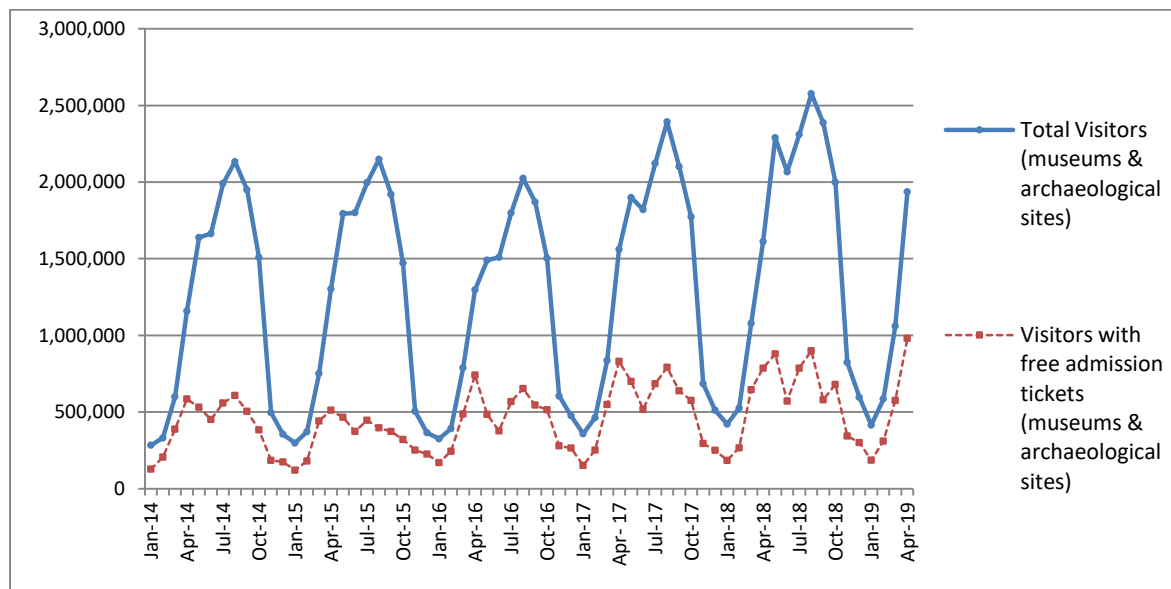
## PRESS RELEASE

### SURVEY ON MUSEUMS AND ARCHAEOLOGICAL SITES ATTENDANCE APRIL 2019

The Hellenic Statistical Authority (ELSTAT) announces the results of the *Survey on Museums and Archaeological Sites Attendance* for April 2019. More specifically:

- In April 2019 compared with the corresponding month of 2018, Museums experienced a 21.8% increase in the number of visitors and a 25.0% increase in the number of free admission visitors as well as a 19.9% increase in their receipts (Table 1),
- In April 2019 compared with the corresponding month of 2018, the number of visitors at Archaeological sites recorded an increase of 19.4%, while a increase of 24.8% was observed in the number of free admission visitors and an 18.4% increase in the corresponding receipts (Table 1),
- During the four-month period from January to April 2019, an increase of 9.2% was observed in the number of visitors of Museums, while an increase of 5.9% was recorded in the number of free admission visitors and a 16.1% increase in the relevant receipts, in comparison with the corresponding period of 2018 (Table 2),
- As regards Archaeological sites, during the four-month period from January to April 2019, an increase of 10.3% was recorded in the number of visitors, while an 11.1% increase was observed in the number of free admission visitors and a 14.4% increase in the relevant receipts, in comparison with the corresponding period of 2018 (Table 2).

**Graph 1: Visitors of Museums and Archaeological sites (Jan 2014 – Apr 2019)**



**Information:**

Social Statistics Division

Section of Culture and Sports statistics

Argyro Pateraki (Tel: +30 213 1352129, e-mail: [ar.pateraki@statistics.gr](mailto:ar.pateraki@statistics.gr))

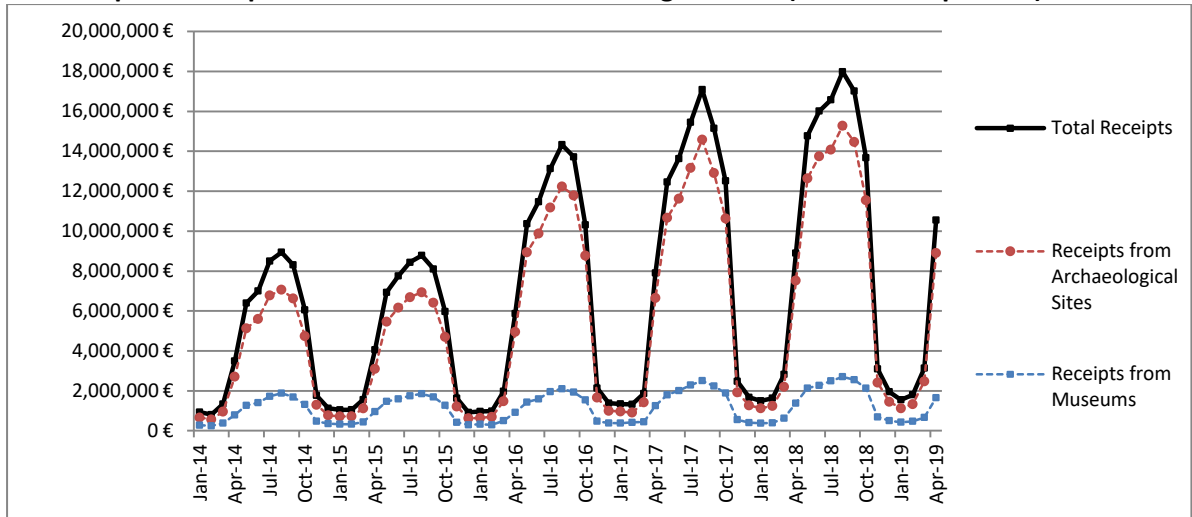
**TABLE 1: VISITORS OF MUSEUMS AND ARCHAEOLOGICAL SITES - TOTAL RECEIPTS  
(APRIL 2018 & APRIL 2019)**

<b>I. VISITORS</b>			
<b>Museums and Archaeological sites</b>	<b>2018</b>	<b>2019</b>	<b>Change 2019/2018</b>
<b>Total number of visitors (A+B)</b>	<b>1,612,080</b>	<b>1,936,713</b>	<b>20.1%</b>
<b>A. Museums (C+E)</b>	<b>497,508</b>	<b>605,720</b>	<b>21.8%</b>
Acropolis Museum	154,917	178,290	15.1%
National Archaeological	52,985	67,873	28.1%
Ancient Olympia	22,788	27,939	22.6%
Palace of the Grand Master (Rhodes)	11,714	16,747	43.0%
Herakleion Archaeological (Crete)	39,123	52,525	34.3%
White Tower	17,990	21,731	20.8%
Delphi	30,239	36,956	22.2%
Other museums	167,752	203,659	21.4%
<b>B. Archaeological Sites (D+F)</b>	<b>1,114,572</b>	<b>1,330,993</b>	<b>19.4%</b>
Epidavros <sup>(1)</sup>	72,339	73,218	1.2%
The Acropolis of Mycenae & Atreus' Treasure	68,268	73,945	8.3%
The Acropolis of Athens	294,635	338,566	14.9%
Sounio	33,228	27,536	-17.1%
The Acropolis of Lindos	17,421	26,777	53.7%
Royal Tombs of Vergina	29,426	32,105	9.1%
Ancient Olympia	47,157	50,042	6.1%
Knossos (Crete)	47,308	77,221	63.2%
Phaistos (Crete)	13,936	12,163	-12.7%
Ancient Korinthos <sup>(1)</sup>	20,088	24,008	19.5%
Mystras <sup>(1)</sup>	18,942	19,583	3.4%
Delphi	50,197	50,926	1.5%
Other archaeological sites	401,627	524,903	30.7%
<b>II. VISITORS WHO PAID TICKET</b>			
	<b>2018</b>	<b>2019</b>	<b>Change 2019/2018</b>
<b>Total number of visitors who paid ticket (C+D)</b>	<b>826,288</b>	<b>955,857</b>	<b>15.7%</b>
C. Museums	233,210	275,464	18.1%
D. Archaeological sites	593,078	680,393	14.7%
<b>III. VISITORS WITH FREE ADMISSION TICKETS</b>			
	<b>2018</b>	<b>2019</b>	<b>Change 2019/2018</b>
<b>Total number of visitors with free admission ticket (E+F)</b>	<b>785,792</b>	<b>980,856</b>	<b>24.8%</b>
E. Museums	264,298	330,256	25.0%
F. Archaeological sites	521,494	650,600	24.8%
<b>IV. RECEIPTS (euros)</b>			
	<b>2018</b>	<b>2019</b>	<b>Change 2019/2018</b>
<b>Total Receipts (G+H)</b>	<b>8,899,595</b>	<b>10,554,418</b>	<b>18.6%</b>
G. Museums	1,377,812	1,651,492	19.9%
H. Archaeological sites	7,521,783	8,902,926	18.4%

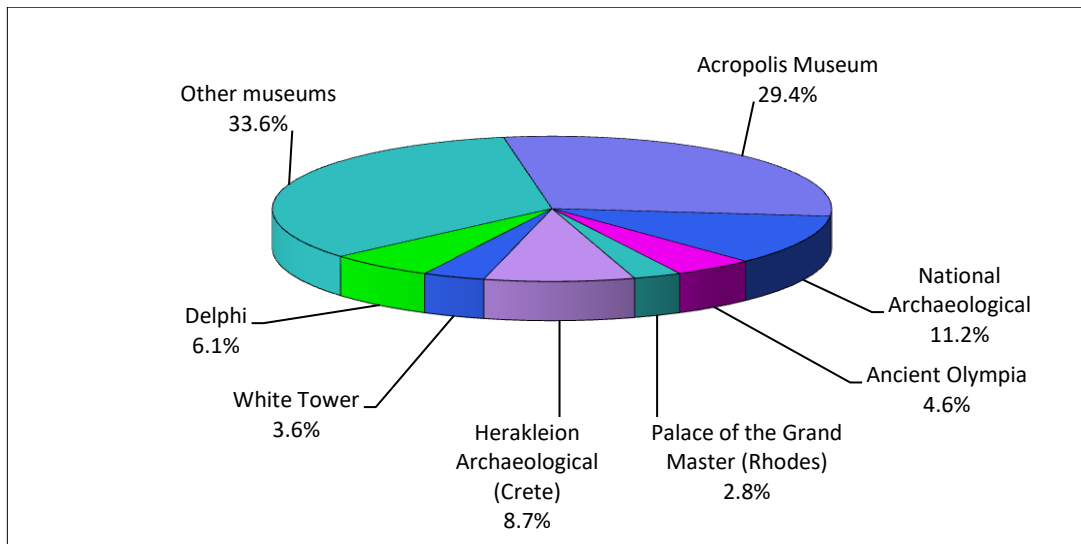
<sup>(1)</sup> Flat rate ticket. valid both for the museum and the archaeological site.

The following graphs depict the evolution of the receipts (Graph 2), as well as the number of visitors by Museum and Archaeological Site (Graphs 3 and 4, respectively),

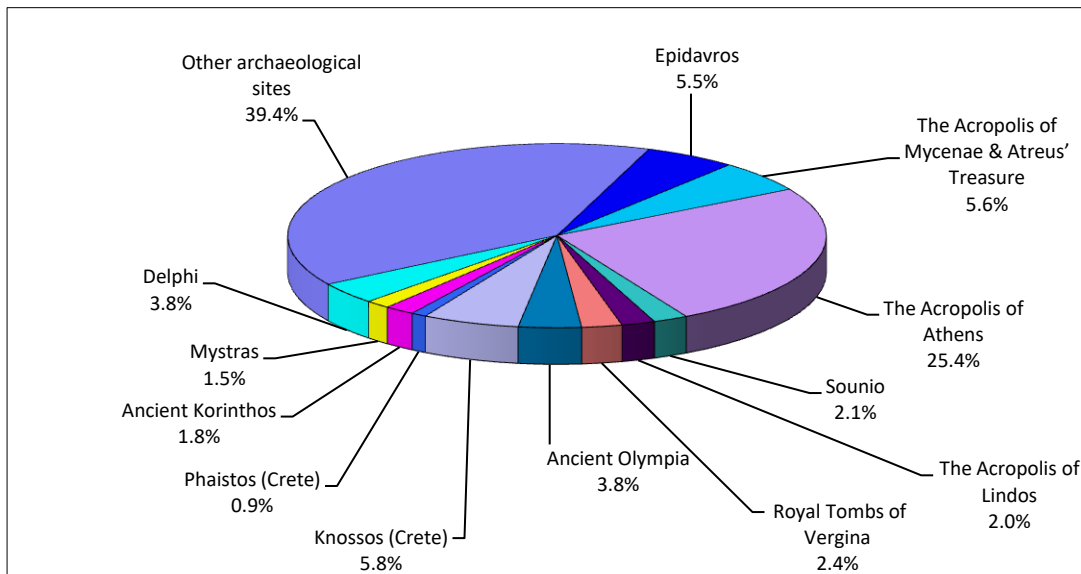
**Graph 2: Receipts from Museums and Archaeological Sites (Jan 2014 - Apr 2019)**



**Graph 3: Percentage distribution of Visitors by Museum, April 2019**



**Graph 4: Percentage distribution of Visitors by Archaeological site, April 2019**



**TABLE 2: VISITORS OF MUSEUMS AND ARCHAEOLOGICAL SITES - TOTAL RECEIPTS  
(2017, 2018 AND JANUARY-APRIL 2018 & 2019)**

<b>I. VISITORS</b>					
Museums and Archaeological sites	2017	2018	JANUARY-APRIL		change
			2018	2019	2019/2018
<b>Total number of visitors (A+B)</b>	<b>16,524,557</b>	<b>18,603,282</b>	<b>3,637,176</b>	<b>3,998,324</b>	<b>9.9%</b>
<b>A. Museums (C+E)</b>	<b>5,191,781</b>	<b>5,702,211</b>	<b>1,314,221</b>	<b>1,435,640</b>	<b>9.2%</b>
Acropolis Museum	1,593,362	1,774,304	442,287	480,888	8.7%
National Archaeological	545,555	594,219	153,318	177,393	15.7%
Ancient Olympia	145,118	156,658	43,277	47,748	10.3%
Palace of the Grand Master (Rhodes)	235,413	242,759	16,825	21,586	28.3%
Herakleion Archaeological (Crete)	426,191	555,031	75,161	77,628	3.3%
White Tower	268,149	225,944	57,794	63,951	10.7%
Delphi	211,827	249,754	64,844	75,668	16.7%
Other museums	1,766,166	1,903,542	460,715	490,778	6.5%
<b>B. Archaeological Sites (D+F)</b>	<b>11,332,776</b>	<b>12,901,071</b>	<b>2,322,955</b>	<b>2,562,684</b>	<b>10.3%</b>
Epidavros <sup>(1)</sup>	469,060	548,900	133,253	130,352	-2.2%
The Acropolis of Mycenae & Atreus' Treasure	412,397	495,993	131,048	134,632	2.7%
The Acropolis of Athens <sup>(2)</sup>	2,766,218	3,150,604	706,156	768,454	8.8%
Sounio	259,709	306,665	79,820	75,589	-5.3%
The Acropolis of Lindos <sup>(3)</sup>	441,012	489,137	19,986	29,631	48.3%
Royal Tombs of Vergina	203,632	222,503	62,092	64,659	4.1%
Ancient Olympia	481,252	484,238	81,398	87,433	7.4%
Knossos (Crete)	634,710	855,663	83,149	107,500	29.3%
Phaistos (Crete)	95,182	134,538	33,987	23,312	-31.4%
Ancient Korinthos <sup>(1)</sup>	191,836	196,944	40,786	45,860	12.4%
Mystras <sup>(1)</sup>	125,549	145,939	30,973	30,713	-0.8%
Delphi	345,804	405,947	104,998	104,024	-0.9%
Other archaeological sites	4,906,415	5,464,000	815,309	960,525	17.8%
<b>II. VISITORS WHO PAID TICKET</b>					
	2017	2018	JANUARY-APRIL		change
			2018	2019	2019/2018
<b>Total number of visitors who paid ticket (C+D)</b>	<b>10,288,448</b>	<b>11,576,110</b>	<b>1,754,404</b>	<b>1,945,560</b>	<b>10.9%</b>
C. Museums	2,831,466	3,155,269	565,800	643,326	13.7%
D. Archaeological sites	7,456,982	8,420,841	1,188,604	1,302,234	9.6%
<b>III. VISITORS WITH FREE ADMISSION TICKETS</b>					
	2017	2018	JANUARY-APRIL		change
			2018	2019	2019/2018
<b>Total number of visitors with free admission ticket (E+F)</b>	<b>6,236,109</b>	<b>7,027,172</b>	<b>1,882,772</b>	<b>2,052,764</b>	<b>9.0%</b>
E. Museums	2,360,315	2,546,942	748,421	792,314	5.9%
F. Archaeological sites	3,875,794	4,480,230	1,134,351	1,260,450	11.1%
<b>IV. RECEIPTS (euros)</b>					
	2017	2018	JANUARY-APRIL		change
			2018	2019	2019/2018
<b>Total Receipts (G+H)</b>	<b>102,887,879</b>	<b>115,772,341</b>	<b>14,853,203</b>	<b>17,043,622</b>	<b>14.7%</b>
G. Museums	16,175,121	18,251,493	2,771,856	3,217,902	16.1%
H. Archaeological sites	86,712,758	97,520,848	12,081,347	13,825,720	14.4%

<sup>(1)</sup> Flat rate ticket, valid both for the museum and the archaeological site.

<sup>(2)</sup> From May 2017 onwards, the data for the number of tickets in the archaeological site of the Acropolis of Athens include the tickets of the Ancient Theatre of Dionysos.

<sup>(3)</sup> The data referring to the number of tickets for the archaeological sites of the Acropolis of Lindos from November 2018 to February 2019 are provisional and are based on estimation.

## EXPLANATORY NOTES

<b>Survey on Museums and Archaeological Sites Attendance</b>	<p>The Survey on Museums and Archaeological Sites Attendance has been producing results since 1970. The survey collects data from the Archaeological Receipts Fund (ARF) of the Ministry of Culture and Sports concerning the number of visitors and the receipts from the tickets sold in the Museums and Archaeological sites of the country.</p> <p>The corresponding data for the Acropolis Museum are available from December 2009 onwards.</p>
<b>Legal Framework</b>	<p>The survey is conducted since 1970 on a regular basis and it produces results on a monthly and yearly basis, in compliance with the Joint Ministerial Decision 15189/B379/73.</p>
<b>Reference Period</b>	<p>01/04/2019 to 30/04/2019.</p>
<b>Methodology and Definitions</b>	<p>The Survey is conducted on a monthly basis from data collected from the Archaeological Receipts Fund (ARF) of the Ministry of Culture and Sports concerning the number of visitors and the receipts from the tickets sold in the Museums and Archaeological sites of the country. ELSTAT tabulates the data on Museums and the Archaeological sites for the whole of the Country, by month and by year.</p> <p><b>Number of flat rate tickets</b></p> <p>From April 1999 onwards, in some museums and the nearby archaeological sites, in addition to the ordinary ticket, a new “flat rate ticket” was established, which is valid for both the museum and the nearby archaeological site, The total number of these flat rate tickets for <b>April 2019</b> was <b>91,879</b>.</p>
<b>References</b>	<p>More information on the Survey on Museums and Archaeological Sites Attendance and detailed time series are available on: <a href="http://www.statistics.gr/en/statistics/-/publication/SCI21/">http://www.statistics.gr/en/statistics/-/publication/SCI21/</a></p>