



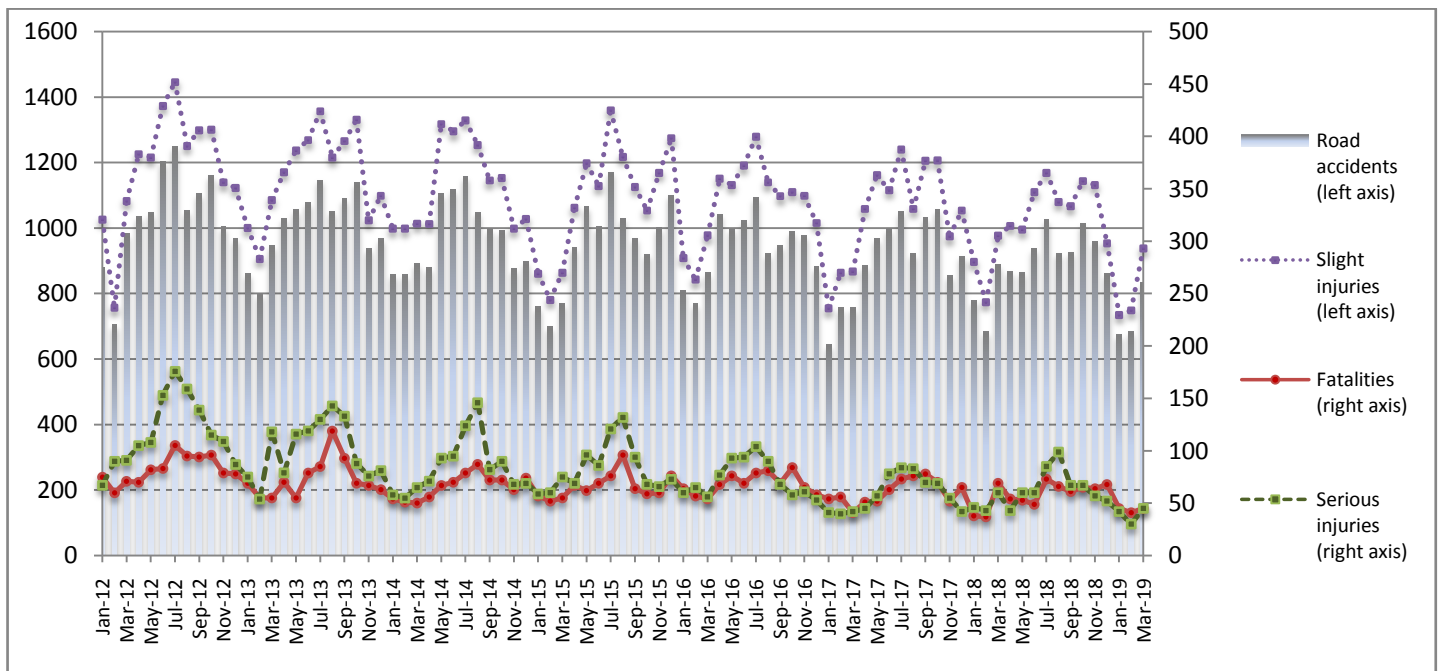
PRESS RELEASE

ROAD ACCIDENTS: March 2019

The Hellenic Statistical Authority (ELSTAT) announces provisional¹ data on Road Accidents for March 2019. In particular, the road traffic accidents which occurred in Greece, resulting in death or injury, decreased by 6.4% in comparison with the corresponding month of 2018 (833 road accidents in March 2019, against 890 road accidents in March 2018).

The casualties of the injury-causing accidents that occurred in March 2019 were as follows: 45 deaths, 45 serious injuries and 938 slight injuries. In contrast, in March 2018 the corresponding figures were: 69 deaths, 60 serious injuries and 977 slight injuries. Therefore, road accident casualties in March 2019 decreased by 34.8% for deaths, by 25.0% for serious injuries and by 4.0% for slight injuries.

Graph 1: Road traffic accidents and casualties,
January 2012 - March 2019



Provisional data: Jul 18 –Mar 19

Information:

Social Statistics Division

Justice and Public Order Statistics Section

D. Athanasopoulou

Tel: +30 213 1352767, Fax : +30 213 1352764

e-mail: d.athanasopoulou@statistics.gr

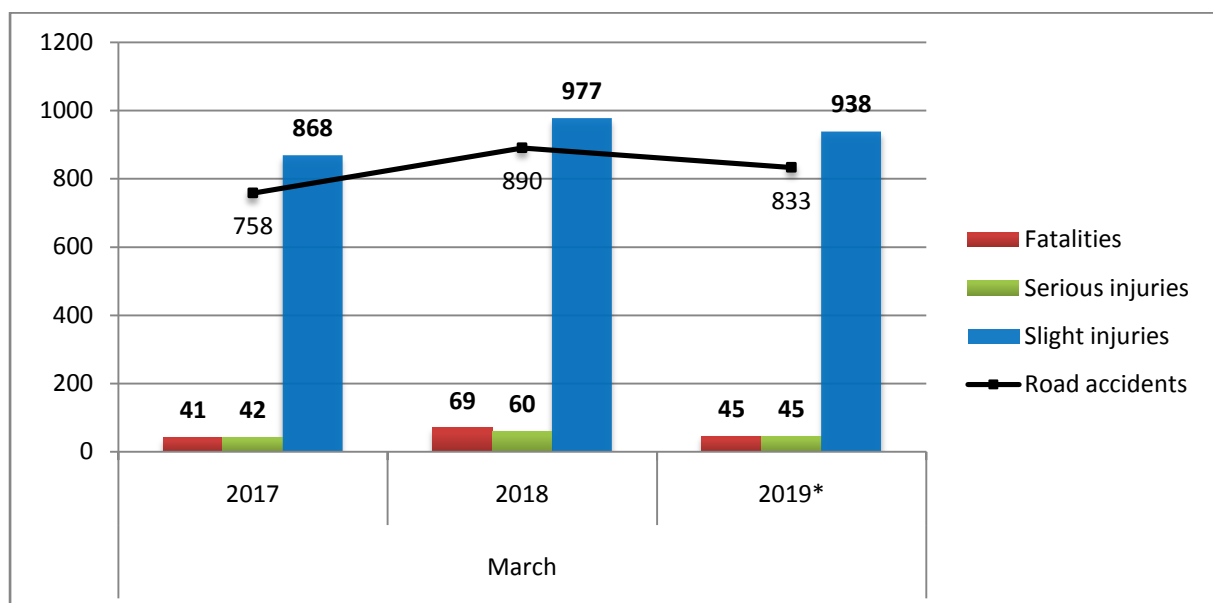
¹ Data for the reference year are provisional until the finalisation of the annual data, which become final 10 months after the end of the reference year. During these 10 months the provisional data are updated on the basis of the data of the Road Accident Forms which are transmitted to ELSTAT by Police Authorities.

Table 1: Road traffic accidents and casualties, March, 2017-2019*

	March				
	2017	2018	2018/2017 (%)	2019*	2019*/2018 (%)
Road accidents	758	890	17.4%	833	-6.4%
Fatalities	41	69	68.3%	45	-34.8%
Total injuries	910	1,037	14.0%	983	-5.2%
Serious injuries	42	60	42.9%	45	-25.0%
Slight injuries	868	977	12.6%	938	-4.0%

* Provisional data

Graph 2: Road traffic accidents and casualties, March 2017, 2018 and 2019*



* Provisional data

Table 2: Road traffic accidents and casualties, by region and department, March 2018 and 2019*

Region and Department	Road accidents			Fatalities			Serious injuries			Slight injuries		
	2018	2019*	%	2018	2019*	%	2018	2019*	%	2018	2019*	%
Greece Total	890	833	-6.4%	69	45	-34.8%	60	45	-25.0%	977	938	-4.0%
Anatoliki Makedonia, Thraki (East Macedonia and Thrace)	29	27	-6.9%	1	1	0.0%	3	0	-100.0%	31	35	12.9%
Drama	7	7	0.0%	0	1		0	0		7	11	
Evros	8	10	25.0%	0	0		0	0		10	13	
Kavala	6	6	0.0%	1	0		2	0		4	7	
Xanthi	3	2	-33.3%	0	0		1	0		4	2	
Rodopi	5	2	-60.0%	0	0		0	0		6	2	
Kentriki Makedonia (Central Macedonia)	150	157	4.7%	9	6	-33.3%	9	7	-22.2%	170	183	7.6%
Imathia	3	5	66.7%	0	0		1	1		3	5	
Thessaloniki	135	133	-1.5%	4	4		3	3		151	154	
Kilkis	3	6	100.0%	4	0		3	1		4	7	
Pella	2	4	100.0%	1	0		0	0		2	4	
Pieria	0	3	-	0	1		0	0		0	9	
Serres	1	2	100.0%	0	1		1	1		0	0	
Chalkidiki	6	4	-33.3%	0	0		1	1		10	4	
Dytiki Makedonia (West Macedonia)	5	4	-20.0%	2	0	-100.0%	0	0	-	4	5	25.0%
Grevena	0	0	-	0	0		0	0		0	0	
Kastoria	2	1	-50.0%	1	0		0	0		1	1	
Kozani	2	3	50.0%	0	0		0	0		2	4	
Florina	1	0	-100.0%	1	0		0	0		1	0	
Ipeiros (Epirus)	9	10	11.1%	5	2	-60.0%	0	1	-	7	11	57.1%
Arta	1	0	-100.0%	0	0		0	0		1	0	
Thesprotia	2	2	0.0%	0	0		0	0		2	3	
Ioannina	5	5	0.0%	3	2		0	1		4	5	
Preveza	1	3	200.0%	2	0		0	0		0	3	
Thessalia (Thessaly)	12	18	50.0%	2	4	100.0%	1	1	0.0%	12	21	75.0%
Karditsa	4	8	100.0%	1	1		0	1		4	7	
Larissa	3	5	66.7%	1	1		0	0		2	7	
Magnissia	2	2	0.0%	0	2		0	0		4	0	
Trikala	3	3	0.0%	0	0		1	0		2	7	
Ionian Nisia (Ionian Islands)	7	11	57.1%	2	2	0.0%	0	0	-	6	11	83.3%
Zakynthos	1	7	600.0%	0	1		0	0		1	6	
Kerkyra	1	1	0.0%	0	1		0	0		1	0	
Kefallinia	2	2	0.0%	2	0		0	0		1	4	
Lefkada	3	1	-66.7%	0	0		0	0		3	1	

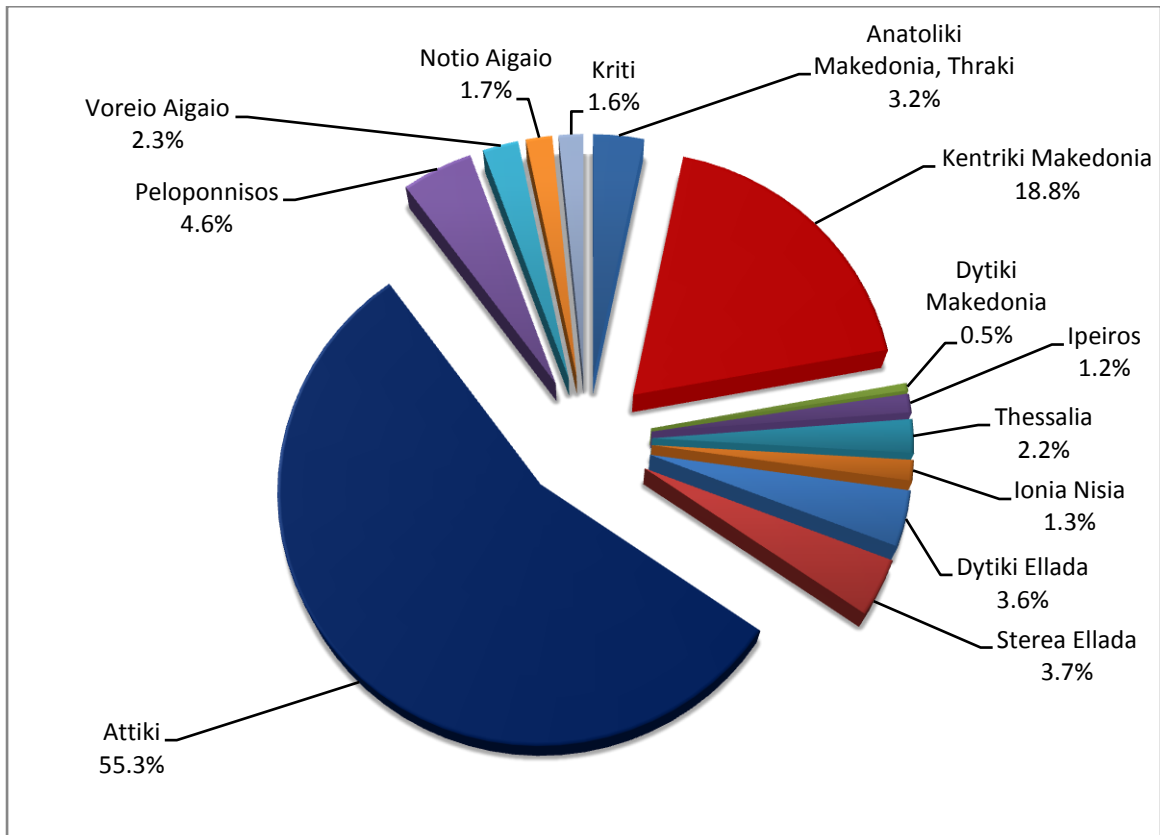
* Provisional data

Table 2: Road traffic accidents and casualties, by region and department, March 2018 and 2019* (Continued)

Region and Department	Road accidents			Fatalities			Serious injuries			Slight injuries		
	2018	2019*	%	2018	2019*	%	2018	2019*	%	2018	2019*	%
Dytiki Ellada (West Greece)	40	30	-25.0%	7	1	-85.7%	6	3	-50.0%	47	30	-36.2%
Etolia & Akarnania	15	11	-26.7%	3	1		4	1		18	11	
Achaia	19	14	-26.3%	4	0		0	1		25	14	
Iliia	6	5	-16.7%	0	0		2	1		4	5	
Stereia Ellada	29	31	6.9%	4	2	-50.0%	4	4	0.0%	30	34	13.3%
Viotia	4	5	25.0%	0	0		0	0		6	8	
Evia	12	14	16.7%	1	2		3	2		13	11	
Evrytania	0	1	-	0	0		0	0		0	1	
Fthiotida	10	7	-30.0%	3	0		1	2		8	8	
Fokida	3	4	33.3%	0	0		0	0		3	6	
Attiki (Attica)	513	461	-10.1%	19	17	-10.5%	16	14	-12.5%	575	526	-8.5%
Peloponnisos (Peloponnese)	43	38	-11.6%	6	4	-33.3%	5	4	-20.0%	51	44	-13.7%
Argolida	7	3	-57.1%	2	0		1	0		9	4	
Arkadia	9	7	-22.2%	3	2		1	1		6	8	
Korinthia	14	16	14.3%	0	1		0	3		23	17	
Lakonia	5	2	-60.0%	0	1		0	0		5	1	
Messinia	8	10	25.0%	1	0		3	0		8	14	
Voreio Aigaio (North Aegean)	14	19	35.7%	0	3	-	4	3	-25.0%	11	16	45.5%
Lesvos	8	13	62.5%	0	2		1	2		8	11	
Samos	4	3	-25.0%	0	0		1	0		3	3	
Chios	2	3	50.0%	0	1		2	1		0	2	
Notio Aigaio (South Aegean)	20	14	-30.0%	4	0	-100.0%	4	4	0.0%	18	10	-44.4%
Dodekanissos	9	10	11.1%	2	0		2	4		6	6	
Kyklades	11	4	-63.6%	2	0		2	0		12	4	
Kriti (Crete)	19	13	-31.6%	8	3	-62.5%	8	4	-50.0%	15	12	-20.0%
Iraklio	12	8	-33.3%	5	1		5	2		11	7	
Lassithi	1	3	200.0%	1	1		0	1		1	3	
Rethymno	0	1	-	0	0		0	1		0	2	
Chania	6	1	-83.3%	2	1		3	0		3	0	

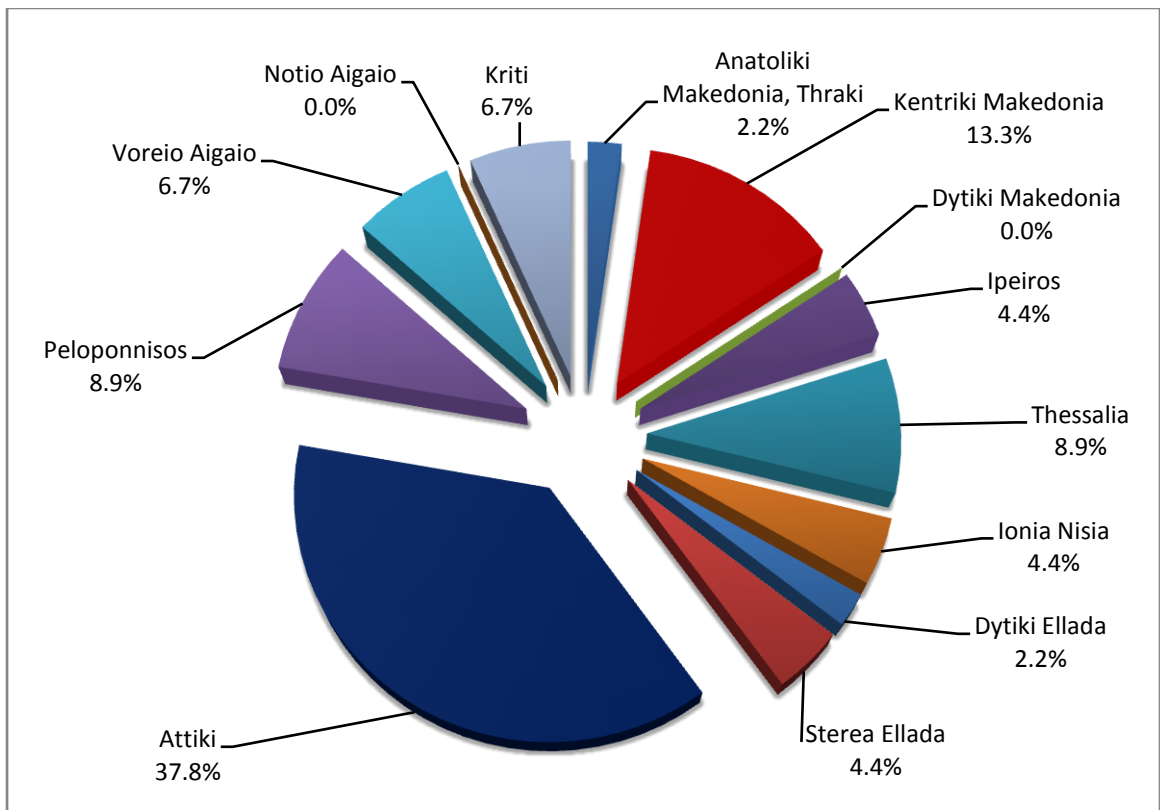
* Provisional data

Graph 3: Road traffic accidents by region, March 2019 *



* Provisional data

Graph 4: Fatalities by region, March 2019 *



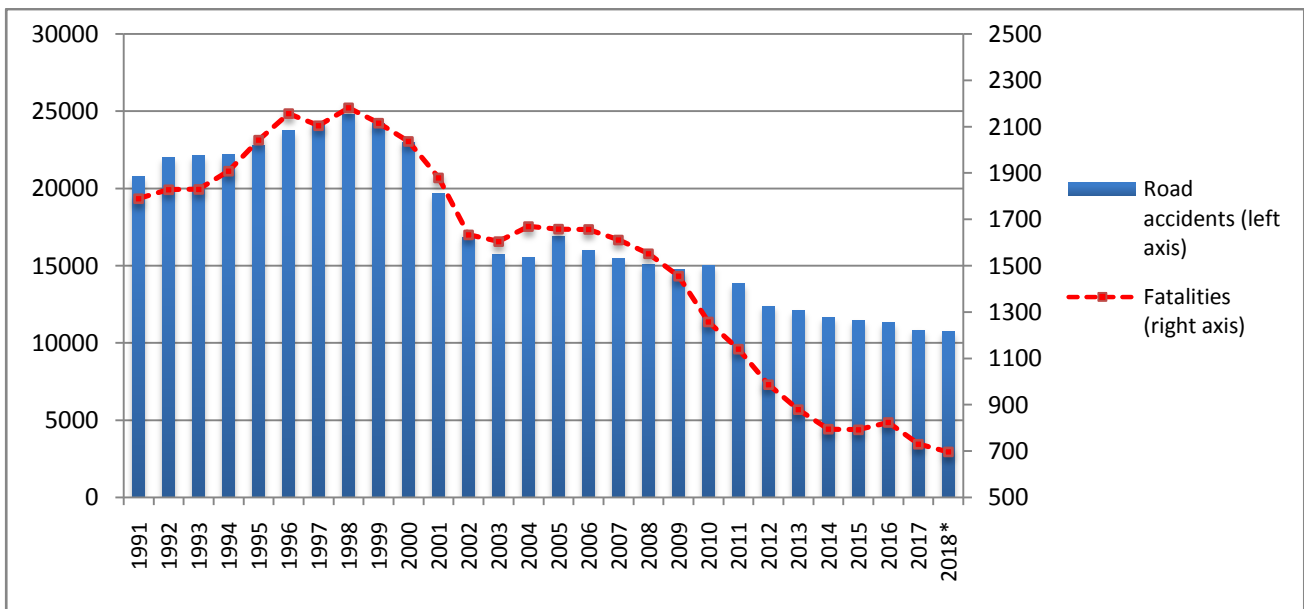
* Provisional data

Table 3: Road Traffic Accidents and casualties for the period January - March 2017, 2018 and 2019*

	2017		2018		2019 *
	January - March	Total year	January - March	Total year*	January - March
Road Accidents	2,160	10,848	2,352	10,740	2,193
<i>Annual Change (%)</i>			8.9%	-1.0%	-6.8%
Fatalities	151	731	144	697	131
<i>Annual Change (%)</i>			-4.6%	-4.7%	-9.0%
Serious injuries	123	706	149	739	117
<i>Annual Change (%)</i>			21.1%	4.7%	-21.5%
Slight injuries	2,487	12,565	2,648	12,307	2,422
<i>Annual Change (%)</i>			6.5%	-2.1%	-8.5%

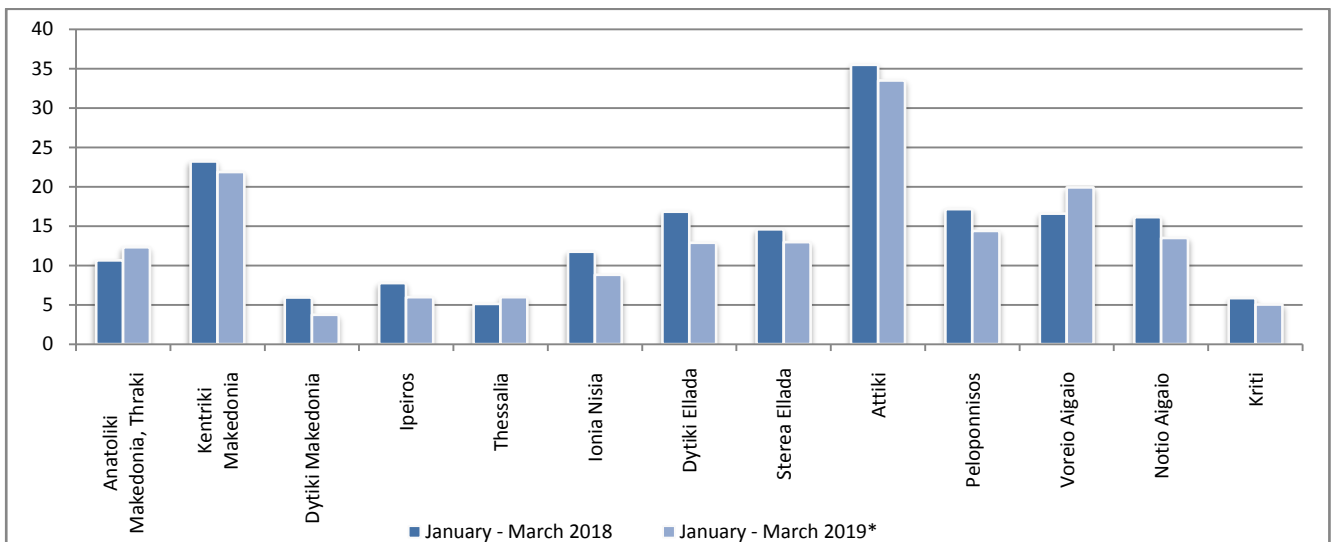
* Provisional data

Graph 5: Total road traffic accidents and fatalities, 1991-2018*



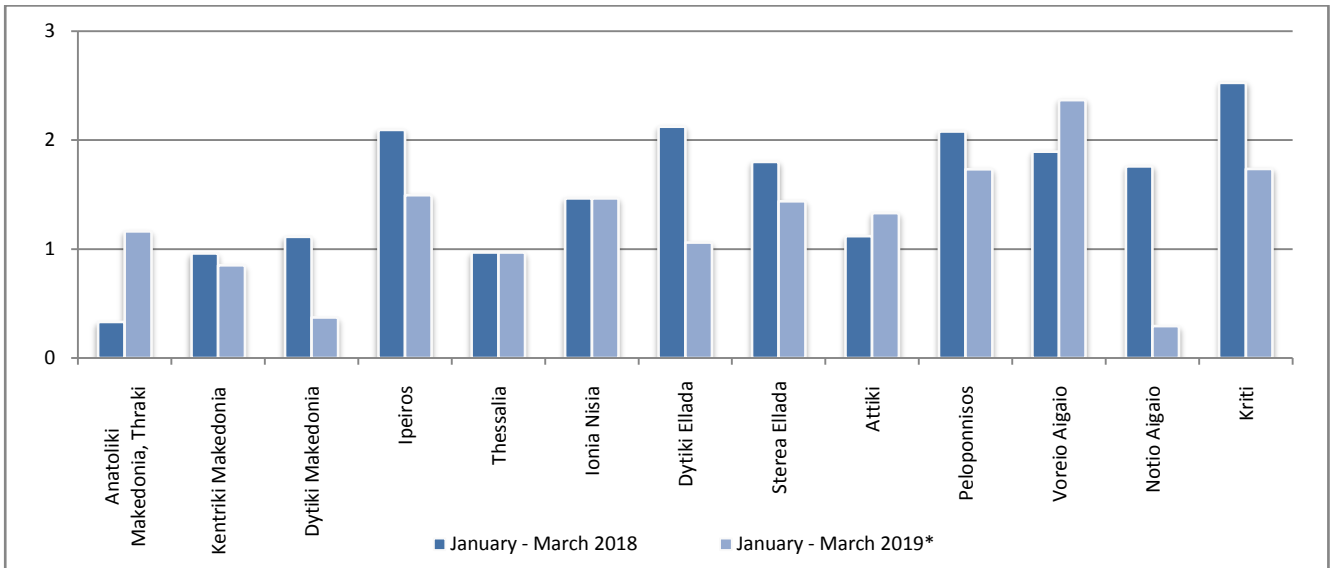
* Provisional data for the period July – December 2018

Graph 6: Road accidents per 100,000 inhabitants

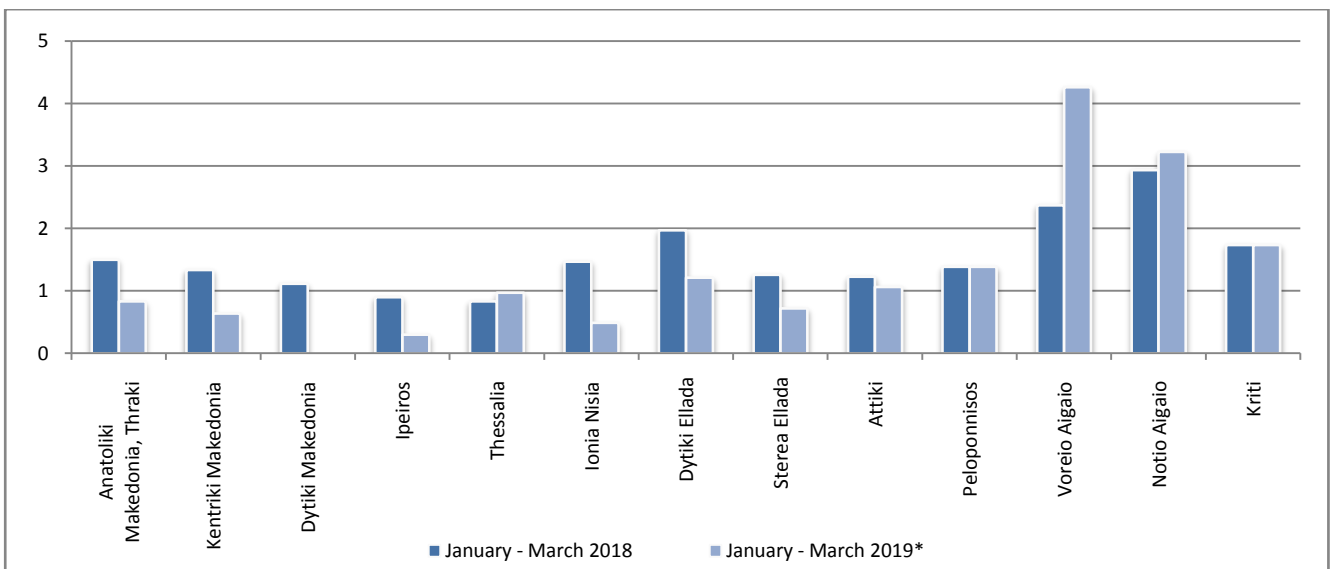


* Provisional data

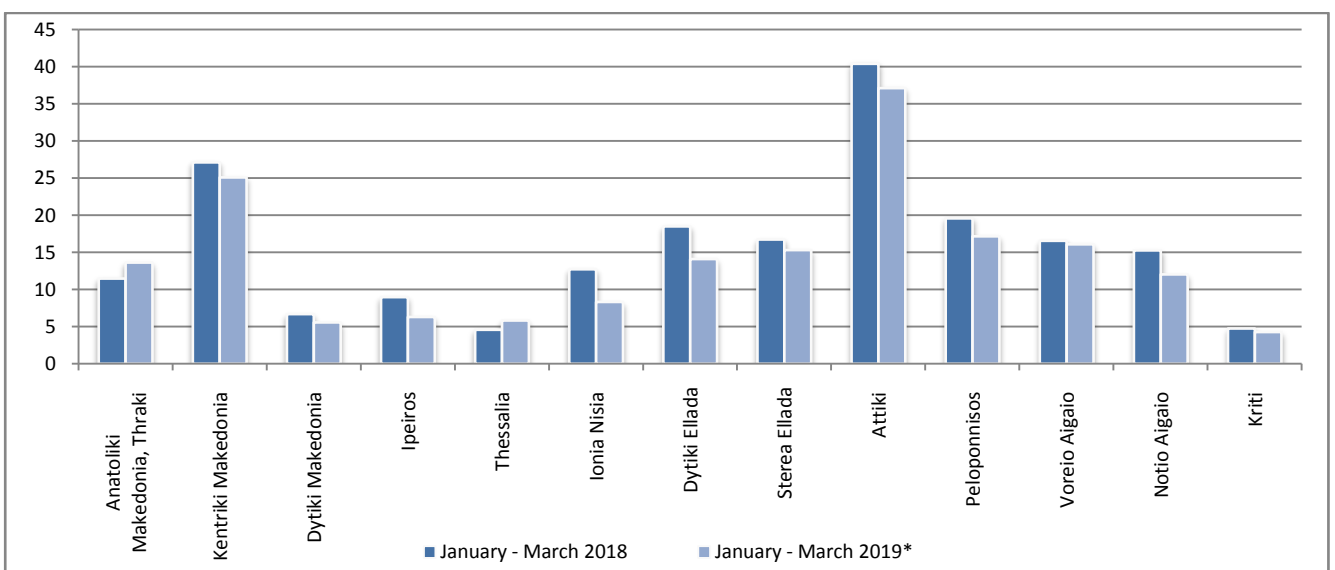
Graph 7: Fatalities per 100,000 inhabitants



Graph 8: Serious injuries per 100,000 inhabitants



Graph 9: Slight injuries per 100,000 inhabitants



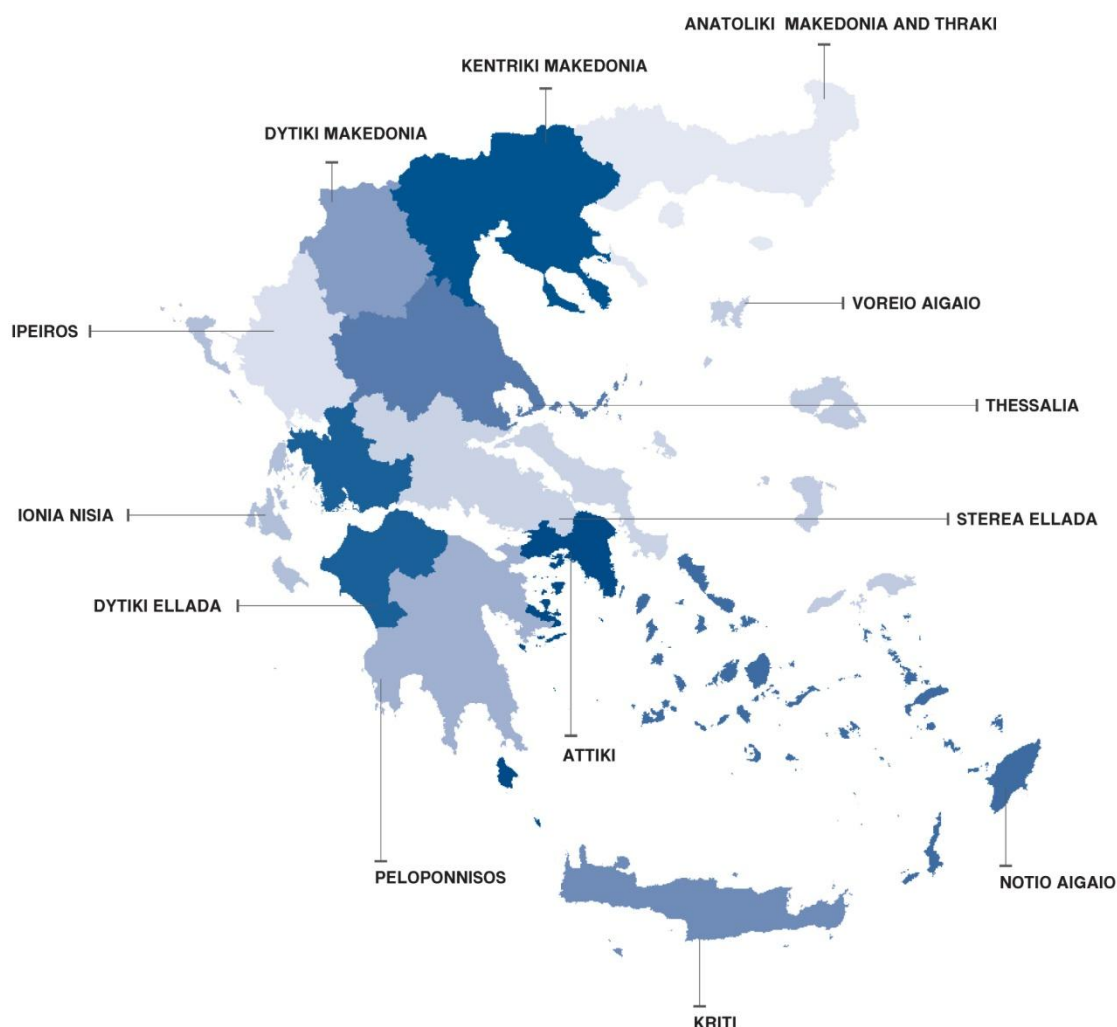
* Provisional data

Explanatory Notes

Survey on Road Accidents The survey on road accidents is conducted on a monthly basis and it records, for each department of Greece and for each month separately, the number of accidents resulting in death or injury, as well as the number of persons injured by categories (drivers, passengers, pedestrians).

On a yearly basis, road accidents are further analyzed. The competent agencies for filling in/collecting the forms on road accidents are the local Police Authorities and the local Port Authorities of Greece.

The lower level of analysis for the place where an injury road accident occurred is the Municipal – Local Commune, which is described by a 8-digit geographic code. Data are collected on a monthly basis. The main variables are the following: place of accident, kind of road, casualties, conditions of road surface and type of road.



Legal basis The Survey on Road Traffic Accidents is governed by Council Decision 93/704 of the European Community.

Reference Period Monthly.

Availability of Data Provisional data are available 2 months after the reference month.
Final data are available 10 months after the reference year.

National Definitions **Road accident** (injury accident): Any accident involving at least one road motor vehicle in motion on a public road or square to which the public has access (excluding yards, industrial sites or vehicle depot of public transport enterprises), resulting in at least one injured or killed person. Accidents with only material damages are not included.

Fatality (Death): Any person killed immediately or dying within 30 days as a result of an injury accident (This national definition applies since 01.01.1996)

Person injured: Any person who sustained an injury as result of an injury accident, and who normally needs medical treatment.

Serious injury: Any person who sustained an injury as result of an injury accident, such as brain damages, mutilation, multiple injuries, which may result in lack of awareness or which are life-threatening.

Slight injury: Any person injured who sustained minor and not life-threatening injuries.

Vehicle: Include motor vehicles, trolleybuses, motorcycles, bicycles, motorbikes, agricultural and road making machines, animal and hand-drawn vehicles. Railway vehicles are excluded, unless the road accident involves at least one of the aforementioned types of vehicles and therefore, railway vehicles are considered vehicles.

Methodology The forms of the survey are filled in by the local Police Authorities and the local Port Authorities as well.

References More information about road accidents is available on ELSTAT's website and more specifically at the link: www.statistics.gr > Population & Social Conditions > Accidents > Road Traffic Accidents. It should be noted that previous press releases and time series are available on ELSTAT's website: www.statistics.gr