



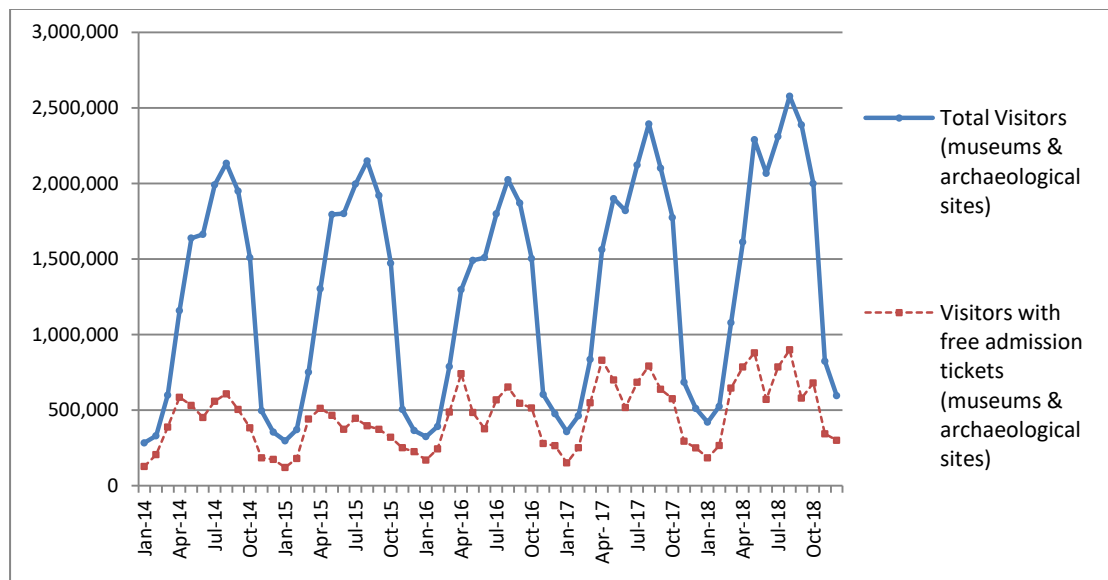
PRESS RELEASE

SURVEY ON MUSEUMS AND ARCHAEOLOGICAL SITES ATTENDANCE DECEMBER 2018

The Hellenic Statistical Authority (ELSTAT) announces the results of the *Survey on Museums and Archaeological Sites Attendance* for December 2018. More specifically:

- In December 2018 compared with the corresponding month of 2017, Museums experienced a 16.0% increase in the number of visitors and a 16.6% increase in the number of free admission visitors as well as a 25.0% increase in their receipts (Table 1),
- In December 2018 compared with the corresponding month of 2017, the number of visitors at Archaeological sites recorded an increase of 17.0%, while an increase of 23.5% was observed in the number of free admission visitors and a 14.3% increase in the corresponding receipts (Table 1),
- During the twelve-month period from January to December 2018, an increase of 9.8% was observed in the number of visitors of Museums, while an increase of 7.9% was recorded in the number of free admission visitors and a 12.8% increase in the relevant receipts, in comparison with the corresponding period of 2017 (Table 2),
- As regards Archaeological sites, during twelve-month period from January to December 2018, an increase of 13.8% was recorded in the number of visitors, while a 15.6% increase was observed in the number of free admission visitors and a 12.5% increase in the relevant receipts, in comparison with the corresponding period of 2017 (Table 2),

Graph 1: Visitors of Museums and Archaeological sites (Jan 2014 – Dec 2018)



Information:

Social Statistics Division

Section of Culture and Sports statistics,

Argyri Pateraki (Tel: +30 213 1352129, e-mail: ar.pateraki@statistics.gr)

**TABLE 1: VISITORS OF MUSEUMS AND ARCHAEOLOGICAL SITES - TOTAL RECEIPTS
(DECEMBER 2017 & DECEMBER 2018)**

I. VISITORS			
Museums and Archaeological sites	2017	2018	Change 2018/2017
Total number of visitors (A+B)	511,376	596,115	16.6%
A. Museums (C+E)	223,974	259,900	16.0%
Acropolis Museum	71,843	84,291	17.3%
National Archaeological	24,799	31,134	25.5%
Ancient Olympia	2,981	3,205	7.5%
Palace of the Grand Master (Rhodes)	1,174	2,298	95.7%
Herakleion Archaeological (Crete)	9,088	9,161	0.8%
White Tower	17,147	19,877	15.9%
Delphi	7,267	8,422	15.9%
Other museums	89,675	101,512	13.2%
B. Archaeological Sites (D+F)	287,402	336,215	17.0%
Epidavros ⁽¹⁾	9,462	9,377	-0.9%
The Acropolis of Mycenae & Atreus' Treasure	9,606	9,352	-2.6%
The Acropolis of Athens ⁽²⁾	105,509	115,761	9.7%
Sounio	9,994	10,459	4.7%
The Acropolis of Lindos ⁽³⁾	352	657	86.6%
Royal Tombs of Vergina	16,152	16,511	2.2%
Ancient Olympia	9,404	8,327	-11.5%
Knossos (Crete)	8,558	18,201	112.7%
Phaistos (Crete)	3,973	6,050	52.3%
Ancient Korinthos ⁽¹⁾	3,554	3,696	4.0%
Mystras ⁽¹⁾	1,995	2,717	36.2%
Delphi	11,816	13,250	12.1%
Other archaeological sites	97,027	121,857	25.6%
II. VISITORS WHO PAID TICKET			
	2017	2018	Change 2018/2017
Total number of visitors who paid ticket (C+D)	260,807	295,425	13.3%
C. Museums	96,532	111,253	15.2%
D. Archaeological sites	164,275	184,172	12.1%
III. VISITORS WITH FREE ADMISSION TICKETS			
	2017	2018	Change 2018/2017
Total number of visitors with free admission ticket (E+F)	250,569	300,690	20.0%
E. Museums	127,442	148,647	16.6%
F. Archaeological sites	123,127	152,043	23.5%
IV. RECEIPTS (euros)			
	2017	2018	Change 2018/2017
Total Receipts (G+H)	1,669,973.00	1,952,443.00	16.9%
G. Museums	402,968.00	503,802.00	25.0%
H. Archaeological sites	1,267,005.00	1,448,641.00	14.3%

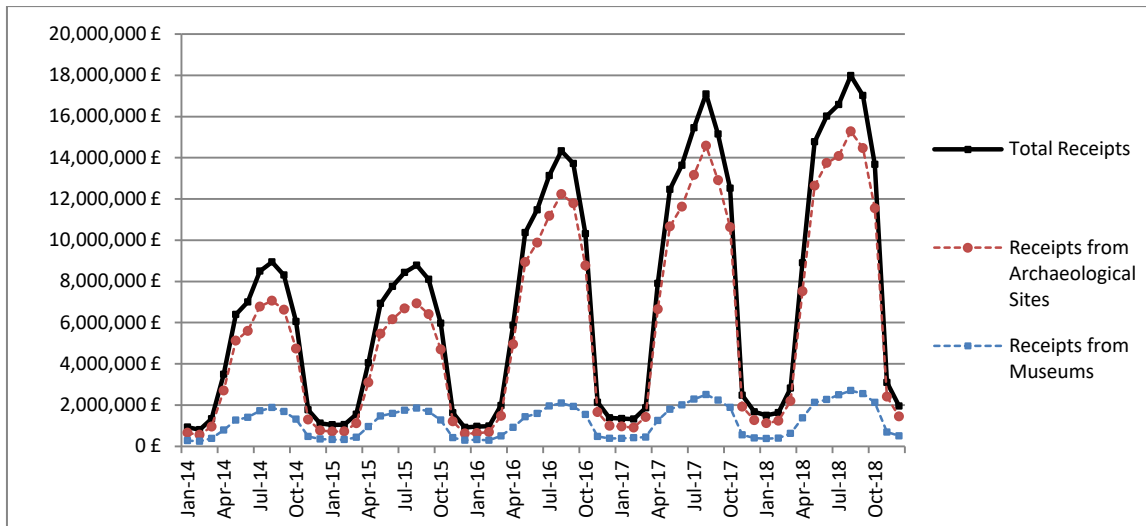
⁽¹⁾ Flat rate ticket, valid both for the museum and the archaeological site.

⁽²⁾ From May 2017 onwards, the data for the number of tickets in the archaeological site of the Acropolis of Athens include the tickets of the Ancient Theatre of Dionysos.

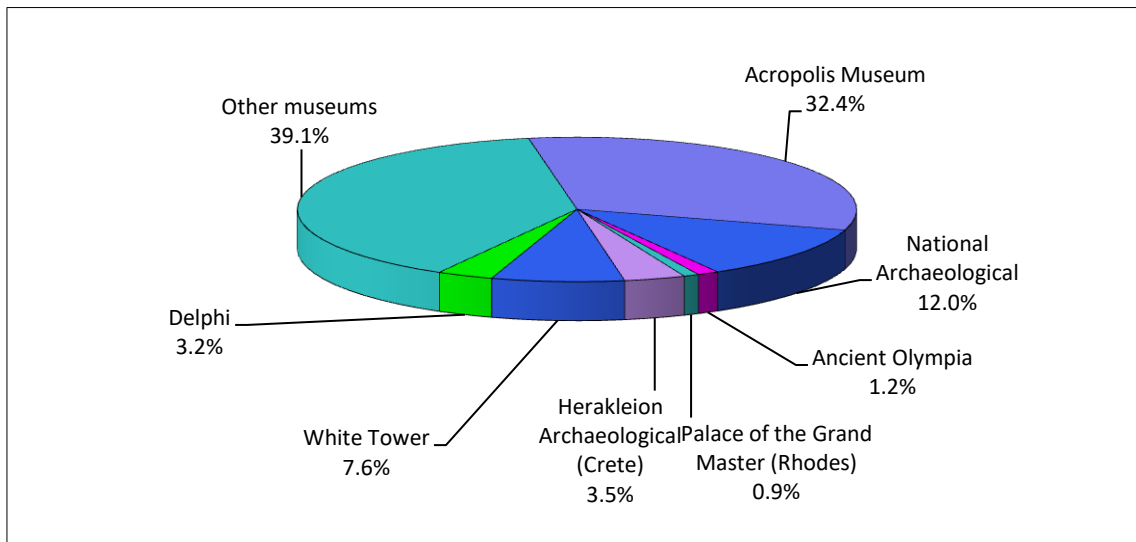
⁽³⁾ The data referring to the number of tickets for the archaeological sites of the Acropolis of Lindos for November 2018 are provisional and are based on estimation.

The following graphs depict the evolution of the receipts (Graph 2), as well as the number of visitors by Museum and Archaeological Site (Graphs 3 and 4, respectively),

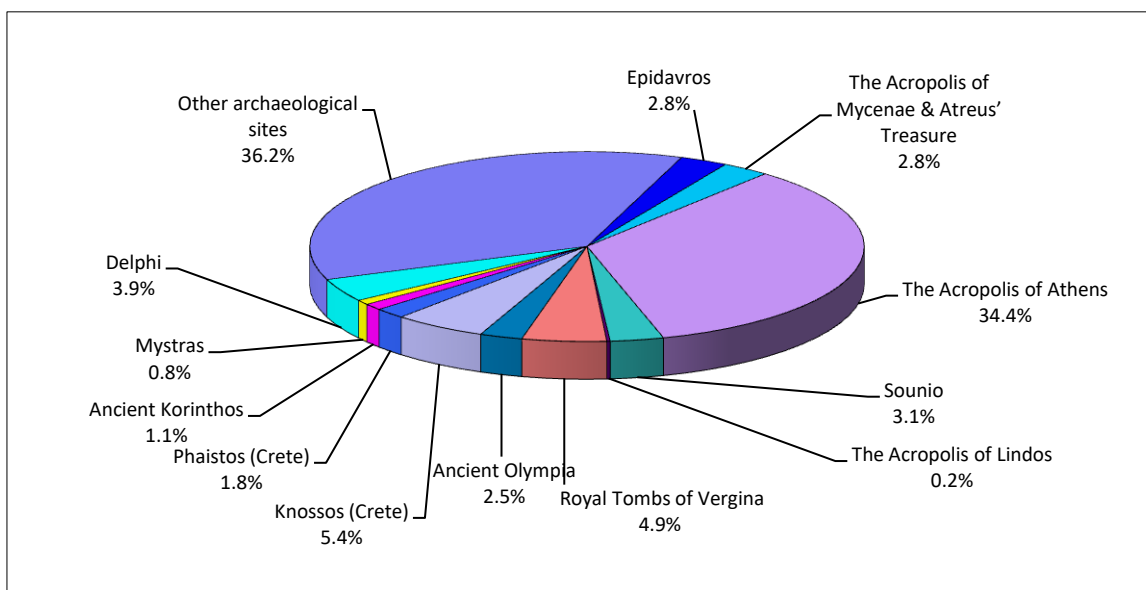
Graph 2: Receipts from Museums and Archaeological Sites (Jan 2014- Dec 2018)



Graph 3: Percentage distribution of Visitors by Museum, December 2018



Graph 4: Percentage distribution of Visitors by Archaeological site, December 2018



**TABLE 2: VISITORS OF MUSEUMS AND ARCHAEOLOGICAL SITES - TOTAL RECEIPTS
(2016, 2017 AND JANUARY- DECEMBER 2017 & 2018)**

I. VISITORS					
Museums and Archaeological sites	2016	2017	JANUARY-DECEMBER		change 2018/2017
			2017	2018	
Total number of visitors (A+B)	14,080,639	16,524,557	16,524,557	18,603,282	12.6%
A. Museums (C+E)	4,515,966	5,191,781	5,191,781	5,702,211	9.8%
Acropolis Museum	1,406,096	1,593,362	1,593,362	1,774,304	11.4%
National Archaeological	447,093	545,555	545,555	594,219	8.9%
Ancient Olympia	124,136	145,118	145,118	156,658	8.0%
Palace of the Grand Master (Rhodes)	237,361	235,413	235,413	242,759	3.1%
Herakleion Archaeological (Crete)	394,915	426,191	426,191	555,031	30.2%
White Tower	290,192	268,149	268,149	225,944	-15.7%
Delphi	166,091	211,827	211,827	249,754	17.9%
Other museums	1,450,082	1,766,166	1,766,166	1,903,542	7.8%
B. Archaeological Sites (D+F)	9,564,673	11,332,776	11,332,776	12,901,071	13.8%
Epidavros ⁽¹⁾	375,437	469,060	469,060	548,900	17.0%
The Acropolis of Mycenae & Atreus' Treasure ⁽³⁾	342,854	412,397	412,397	495,993	20.3%
The Acropolis of Athens ^{(2) (4)}	1,807,580	2,766,218	2,766,218	3,150,604	13.9%
Sounio ⁽⁴⁾	222,800	259,709	259,709	306,665	18.1%
The Acropolis of Lindos	421,070	441,012	441,012	489,137	10.9%
Royal Tombs of Vergina	186,627	203,632	203,632	222,503	9.3%
Ancient Olympia	423,424	481,252	481,252	484,238	0.6%
Knossos (Crete)	611,455	634,710	634,710	855,663	34.8%
Phaistos (Crete)	77,071	95,182	95,182	134,538	41.3%
Ancient Korinthos ⁽¹⁾	153,307	191,836	191,836	196,944	2.7%
Mystras ⁽¹⁾	114,293	125,549	125,549	145,939	16.2%
Delphi	290,705	345,804	345,804	405,947	17.4%
Other archaeological sites	4,538,050	4,906,415	4,906,415	5,464,000	11.4%
II. VISITORS WHO PAID TICKET					
	2016	2017	JANUARY-DECEMBER		change
			2017	2018	2018/2017
Total number of visitors who paid ticket (C+D)	8,749,957	10,288,448	10,288,448	11,576,110	12.5%
C. Museums	2,406,665	2,831,466	2,831,466	3,155,269	11.4%
D. Archaeological sites	6,343,292	7,456,982	7,456,982	8,420,841	12.9%
III. VISITORS WITH FREE ADMISSION TICKETS					
	2016	2017	JANUARY-DECEMBER		change
			2017	2018	2017/2016
Total number of visitors with free admission ticket (E+F)	5,330,682	6,236,109	6,236,109	7,027,172	12.7%
E. Museums	2,109,301	2,360,315	2,360,315	2,546,942	7.9%
F. Archaeological sites	3,221,381	3,875,794	3,875,794	4,480,230	15.6%
IV. RECEIPTS (euros)					
	2016	2017	JANUARY-DECEMBER		change
			2017	2018	2017/2016
Total Receipts (G+H)	86,647,638.00	102,887,879.00	102,887,879.00	115,772,341.00	12.5%
G. Museums	13,448,464.00	16,175,121.00	16,175,121.00	18,251,493.00	12.8%
H. Archaeological sites	73,199,174.00	86,712,758.00	86,712,758.00	97,520,848.00	12.5%

⁽¹⁾ Flat rate ticket, valid both for the museum and the archaeological site.

⁽²⁾ From May 2017 onwards, the data for the number of tickets in the archaeological site of the Acropolis of Athens include the tickets of the Ancient Theatre of Dionysos.

⁽³⁾ The data on the number of visitors to the archaeological site of the Acropolis of Mycenae & Atreus' Treasure for May 2017 have been revised.

⁽⁴⁾ The data referring to the number of tickets for the archaeological sites of the Acropolis of Athens and Sounion for September 2018, that were estimated have been revised due to the provision of new data from the Archaeological Receipts Fund (ARF).

EXPLANATORY NOTES

Survey on Museums and Archaeological Sites Attendance	The Survey on Museums and Archaeological Sites Attendance has been producing results since 1970, The survey collects data from the Archaeological Receipts Fund (ARF) of the Ministry of Culture and Sports concerning the number of visitors and the receipts from the tickets sold in the Museums and Archaeological sites of the country, The corresponding data for the Acropolis Museum are available from December 2009 onwards,
Legal Framework	The survey is conducted since 1970 on a regular basis and it produces results on a monthly and yearly basis, in compliance with the Joint Ministerial Decision 15189/B379/73,
Reference Period	01/12/2018 to 31/12/2018,
Methodology and Definitions	The Survey is conducted on a monthly basis from data collected from the Archaeological Receipts Fund (ARF) of the Ministry of Culture and Sports concerning on the number of visitors and the receipts from the tickets sold in the Museums and Archaeological sites of the country, ELSTAT tabulates the data on Museums and the Archaeological sites for the whole of the Country, by month and by year,

Information on ticket payment

- From January 2002 onwards, the number of Museums' visitors includes both the visitors who have bought a ticket and the visitors with free admission ticket, From 16-06-1996 onwards, the Museums and the Archaeological sites all over Greece have a paid admission for all the visitors, Greeks and foreigners, all over the year, except in the following days, which are free admission days:
- National Holidays (25th of March and 28th of October)
- The first Sunday every month during the five month period from 1 November to 31 March
- The 6th of March (in memory of Melina Merkouri)
- The 18th of April (International Monuments Day)
- The 18th of May (International Museums Day)
- The 5th of June (International Environment Day)
- The last weekend of September, annually (European Heritage Days)

Free admission tickets

The admission to Museums and Archaeological site is free for:

- Young people from EU-countries aged under 18 years, with current identification card to confirm their age,
- Students of Universities and of Higher and Technical Education Institutions or equivalent institutions of EU-countries, as well as of Tour Guide Training Institutes, with valid student identification card or International Student Identity Card (ISIC)
- Employees of the Hellenic Ministry of Culture, with valid professional identity card
- ICOM and ICOMOS cardholders
- Tour Guides with their current working identification card from the Ministry of Development
- Teachers accompanying pupils and students on primary, secondary and tertiary education institution tours
- Journalists with valid journalists' identification card
- Members of Associations and Societies of Friends of Museums and Archaeological Sites
- Official guests of the Greek Government, after relevant approval
- Escorts of blind persons and persons with disabilities
- Free admission cardholders
- Holders of the Culture Card

Number of flat rate tickets

From April 1999 onwards, in some museums and the nearby archaeological sites, in addition to the ordinary ticket, a new "flat rate ticket" was established, which is valid for both the museum and the nearby archaeological site, The total number of these flat rate tickets for **December 2018** was **13,267**.

More information on the Survey on Museums and Archaeological Sites Attendance and detailed time series are available on: <http://www.statistics.gr/en/statistics/-/publication/SC121/>