



PRESS RELEASE

Turnover indices in Transport Sector: 2nd Quarter 2018

The Hellenic Statistical Authority (ELSTAT) announces the Turnover Indices in Transport Sector. Specifically:

Year on Year growth rates

- The Turnover Index in **land transport and transport via pipelines** in the 2nd quarter 2018 as compared to the 2nd quarter 2017 decreased by 1.9%, while an increase of 10.6% was observed for the corresponding period of 2017 compared to 2016 (Table 1, Graph 1).
- The Turnover Index in **water transport** in the 2nd quarter 2018 as compared to the 2nd quarter 2017 increased by 7.4%, while a decrease of 10.9% was observed for the corresponding period of 2017 compared to 2016 (Table 1, Graph 2).
- The Turnover Index in **air transport** in the 2nd quarter 2018 as compared to the 2nd quarter 2017 decreased by 4.6%, while an increase of 16.6% was observed for the corresponding period of 2017 compared to 2016 (Table 2, Graph 3).
- The Turnover Index in **warehousing and support activities for transportation** in the 2nd quarter 2018 as compared to the 2nd quarter 2017 increased by 11.3%, while an increase of 10.0% was observed for the corresponding period of 2017 compared to 2016 (Table 2, Graph 4).
- The Turnover Index in **travel agency, tour operator reservation service and related activities** in the 2nd quarter 2018 as compared to the 2nd quarter 2017 increased by 16.6%, while an increase of 6.5% was observed for the corresponding period of 2017 compared to 2016 (Table 3, Graph 5).

Information

Trade and Services Statistics Division

Transports, Communications and Mass Media Section

Sideri Spiridoula, Dalli Argyro, tel. (+30) 213 135 2056, 2499 (divisions 49,51,52,79)

K. Papandreou, tel. (+30) 213 135 2187 (division 50)

Fax: (+30) 213 1352398

E-mail: transport@statistics.gr

Quarter on Quarter growth rates

- The Turnover Index in **land transport and transport via pipelines** in the 2nd quarter 2018 as compared to the 1st quarter 2018 increased by 6.9%, while the increase for the corresponding period of 2017 was 14.9%(Table 1, Graph 1).
- The Turnover Index in **water transport** in the 2nd quarter 2018 as compared to the 1st quarter 2018 increased by 69.3%, while the increase for the corresponding period of 2017 was 58.0% (Table 1, Graph 2).
- The Turnover Index in **air transport** in the 2nd quarter 2018 as compared to the 1st quarter 2018 increased by 70.4%, while the increase for the corresponding period of 2017 was 94.6% (Table 2, Graph 3).
- The Turnover Index in **warehousing and support activities for transportation**, in the 2nd quarter 2018 as compared to the 1st quarter 2018 increased by 17.8%, while the increase for the corresponding period of 2017 was 19.8% (Table 2, Graph 4).
- The Turnover Index in **travel agency, tour operator reservation service and related activities**, in the 2nd quarter 2018 as compared to the 1st quarter 2018 increased by 145.0%, while the increase for the corresponding period of 2017 was 171.0% (Table 3, Graph 5).

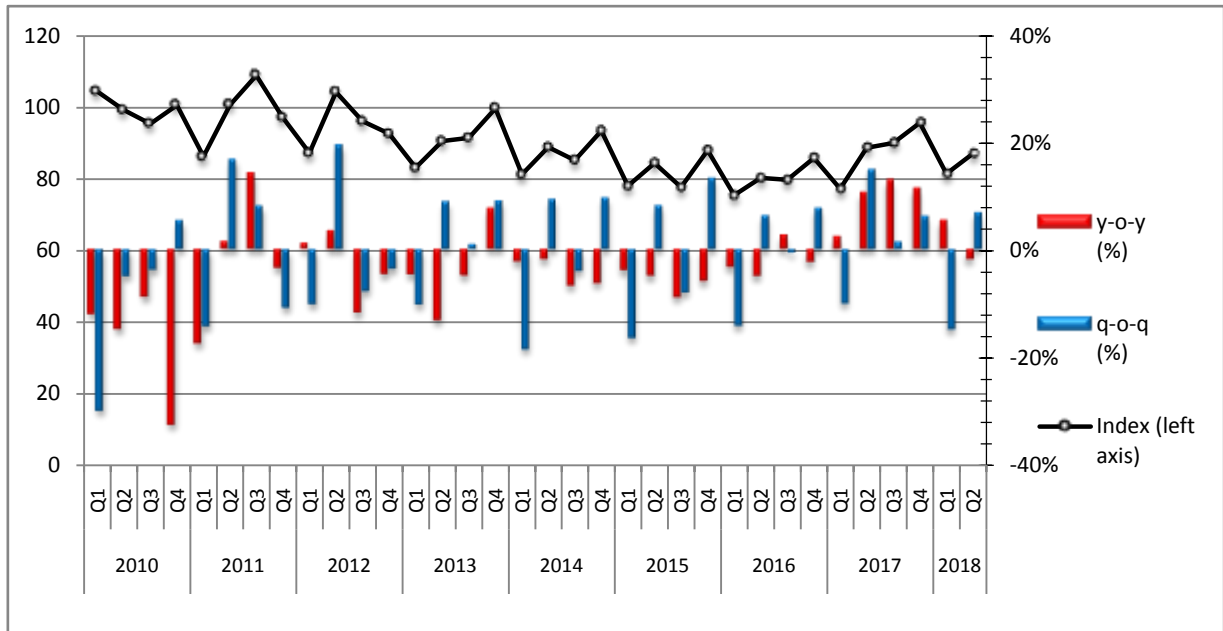
The tables and the graphs that follow present the evolution of the indices from 2010 onwards.

Table 1. Turnover Indexes in Land Transport via Pipelines (div 49 Nace rev.2) and in Water Transport (div 50 Nace rev.2) Base Year: 2010=100.0

Year	Quarter	Index (div 49)	y-o-y change	q-o-q change	Index (div 50)	y-o-y change	q-o-q change
2010	Q1	104.5	-12.0%	-29.9%	71.7	-2.7%	-7.7%
	Q2	99.3	-14.8%	-5.0%	104.8	-6.2%	46.2%
	Q3	95.5	-8.8%	-3.8%	152.5	-12.6%	45.5%
	Q4	100.7	-32.4%	5.4%	71.0	-8.6%	-53.4%
	Annual average	100.0	-18.2%		100.0	-8.6%	
2011	Q1	86.3	-17.4%	-14.3%	70.9	-1.1%	-0.1%
	Q2	100.8	1.5%	16.8%	95.7	-8.7%	35.0%
	Q3	109.0	14.1%	8.1%	157.1	3.0%	64.2%
	Q4	97.2	-3.5%	-10.8%	65.8	-7.3%	-58.1%
	Annual average	98.3	-1.7%		97.4	-2.6%	
2012	Q1	87.3	1.2%	-10.2%	61.1	-13.8%	-7.1%
	Q2	104.3	3.5%	19.5%	81.8	-14.5%	33.9%
	Q3	96.2	-11.7%	-7.8%	124.9	-20.5%	52.7%
	Q4	92.7	-4.6%	-3.6%	61.9	-5.9%	-50.4%
	Annual average	95.1	-3.3%		82.4	-15.4%	
2013	Q1	83.2	-4.7%	-10.2%	54.8	-10.3%	-11.5%
	Q2	90.6	-13.1%	8.9%	75.8	-7.3%	38.3%
	Q3	91.5	-4.9%	1.0%	117.5	-5.9%	55.0%
	Q4	99.8	7.7%	9.1%	57.2	-7.6%	-51.3%
	Annual average	91.3	-4.0%		76.3	-7.4%	
2014	Q1	81.3	-2.3%	-18.5%	44.5	-18.8%	-22.2%
	Q2	88.9	-1.9%	9.3%	67.4	-11.1%	51.5%
	Q3	85.3	-6.8%	-4.0%	111.0	-5.5%	64.7%
	Q4	93.5	-6.3%	9.6%	57.6	0.7%	-48.1%
	Annual average	87.3	-4.4%		70.1	-8.1%	
2015	Q1	78.1	-3.9%	-16.5%	42.3	-4.9%	-26.6%
	Q2	84.5	-4.9%	8.2%	69.1	2.5%	63.4%
	Q3	77.7	-8.9%	-8.0%	102.7	-7.5%	48.6%
	Q4	88.0	-5.9%	13.3%	51.3	-10.9%	-50.0%
	Annual average	82.1	-6.0%		66.4	-5.3%	
2016	Q1	75.5	-3.3%	-14.2%	42.3	0.0%	-17.5%
	Q2	80.3	-5.0%	6.4%	65.1	-5.8%	53.9%
	Q3	79.8	2.7%	-0.6%	100.4	-2.2%	54.2%
	Q4	85.9	-2.4%	7.6%	45.4	-11.5%	-54.8%
	Annual average	80.4	-2.1%		63.3	-4.7%	
2017	Q1	77.3	2.4%	-10.0%	36.7	-13.2%	-19.2%
	Q2	88.8	10.6%	14.9%	58.0	-10.9%	58.0%
	Q3	90.1	12.9%	1.5%	90.2	-10.2%	55.5%
	Q4	95.7	11.4%	6.2%	44.4	-2.2%	-50.8%
	Annual average	88.0	9.5%		57.3	-9.5%	
2018	Q1*	81.5	5.4%	-14.8%	36.8	0.3%	-17.1%
	Q2	87.1	-1.9%	6.9%	62.3	7.4%	69.3%

* Revised data

Graph 1. Evolution of Turnover Index in Land Transport and Transport via Pipelines - div 49 Nace rev.2 (2010=100.0)



Graph 2. Evolution of Turnover Index in Water Transport - div 50 Nace rev.2 (2010=100.0)

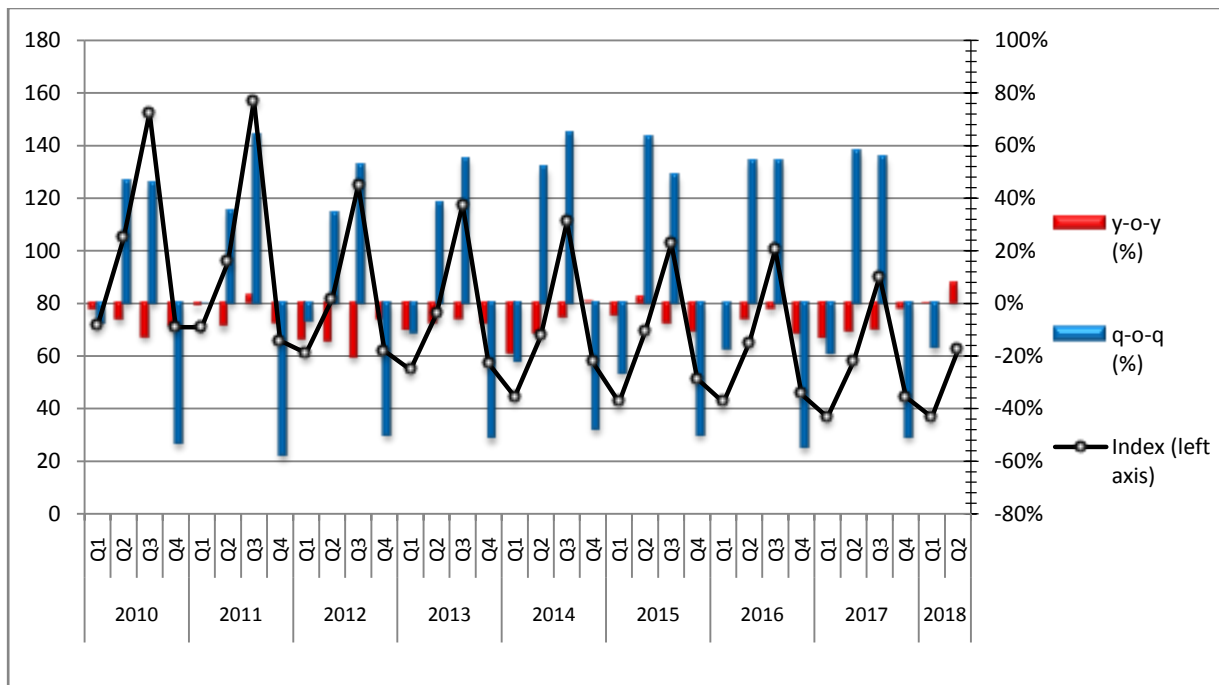
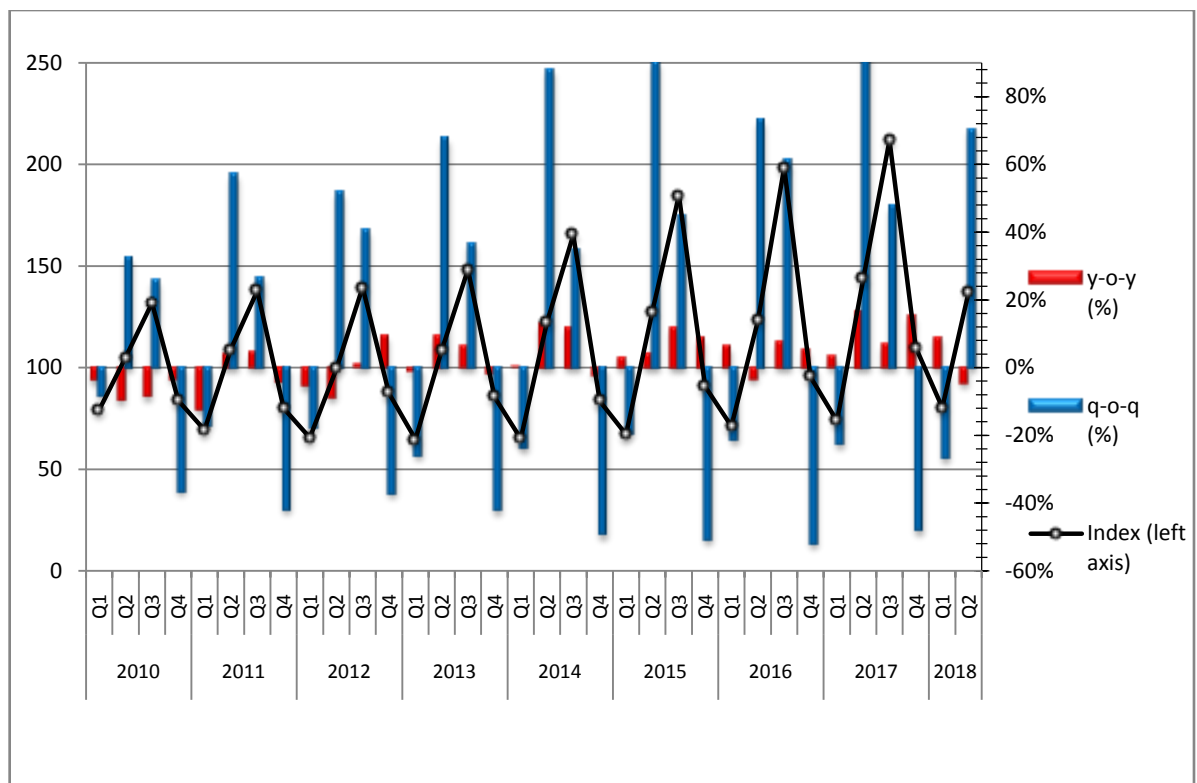


Table2. Turnover Indexes in Air Transport (div 51 Nace rev.2) and in Warehousing and Support Activities for Transportation (div 52 Nace rev.2) Base Year: 2010=100.0

Year	Quarter	Index (div 51)	y-o-y change	q-o-q change	Index (div 52)	y-o-y change	q-o-q change
2010	Q1	79.3	-3.9%	-8.6%	96.8	-4.5%	-19.0%
	Q2	105.0	-9.7%	32.4%	107.8	-6.5%	11.4%
	Q3	131.9	-8.7%	25.6%	93.5	-16.7%	-13.3%
	Q4	83.8	-3.5%	-36.5%	101.9	-14.7%	9.0%
	Annual average	100.0	-7.0%		100.0	10.8%	
2011	Q1	69.4	-12.5%	-17.2%	85.7	-11.5%	-15.9%
	Q2	109.0	3.8%	57.1%	92.7	-14.0%	8.2%
	Q3	137.9	4.5%	26.5%	97.1	3.9%	4.7%
	Q4	80.0	-4.5%	-42.0%	92.9	-8.8%	-4.3%
	Annual average	99.1	-0.9%		92.1	-7.9%	
2012	Q1	65.5	-5.6%	-18.1%	71.4	-16.7%	-23.1%
	Q2	99.4	-8.8%	51.8%	93.9	1.3%	31.5%
	Q3	139.5	1.2%	40.3%	93.8	-3.4%	-0.1%
	Q4	87.5	9.4%	-37.3%	91.7	-1.3%	-2.2%
	Annual average	98.0	-1.1%		87.7	-4.8%	
2013	Q1	64.8	-1.1%	-25.9%	70.0	-2.0%	-23.7%
	Q2	108.6	9.3%	67.6%	84.8	-9.7%	21.1%
	Q3	148.2	6.2%	36.5%	86.0	-8.3%	1.4%
	Q4	85.6	-2.2%	-42.2%	85.4	-6.9%	-0.7%
	Annual average	101.8	3.9%		81.6	-7.0%	
2014	Q1	65.1	0.5%	-23.9%	74.2	6.0%	-13.1%
	Q2	122.4	12.7%	88.0%	86.4	1.9%	16.4%
	Q3	165.2	11.5%	35.0%	89.1	3.6%	3.1%
	Q4	83.5	-2.5%	-49.5%	94.3	10.4%	5.8%
	Annual average	109.1	7.2%		86.0	5.4%	
2015	Q1	67.1	3.1%	-19.6%	81.2	9.4%	-13.9%
	Q2	127.6	4.2%	90.2%	90.4	4.6%	11.3%
	Q3	184.7	11.8%	44.7%	85.9	-3.6%	-5.0%
	Q4	90.7	8.6%	-50.9%	95.2	1.0%	10.8%
	Annual average	117.5	7.7%		88.2	2.6%	
2016	Q1	71.3	6.3%	-21.4%	86.5	6.5%	-9.1%
	Q2	123.2	-3.4%	72.8%	96.8	7.1%	11.9%
	Q3	198.4	7.4%	61.0%	101.0	17.6%	4.3%
	Q4	95.5	5.3%	-51.9%	95.5	0.3%	-5.4%
	Annual average	122.1	3.9%		95.0	7.7%	
2017	Q1	73.8	3.5%	-22.7%	88.9	2.8%	-6.9%
	Q2	143.6	16.6%	94.6%	106.5	10.0%	19.8%
	Q3	211.8	6.8%	47.5%	109.2	8.1%	2.5%
	Q4	110.0	15.2%	-48.1%	111.8	17.1%	2.4%
	Annual average	134.8	10.4%		104.1	9.6%	
2018	Q1*	80.4	8.9%	-26.9%	100.6	13.2%	-10.0%
	Q2	137.0	-4.6%	70.4%	118.5	11.3%	17.8%

* Revised data

Graph 3. Evolution of Turnover Index in air Transport - div 51 Nace rev.2 (2010=100.0)



Graph 4. Evolution of Turnover Index in Warehousing and Support Activities for Transportation - div 52 Nace rev.2 (2010=100.0)

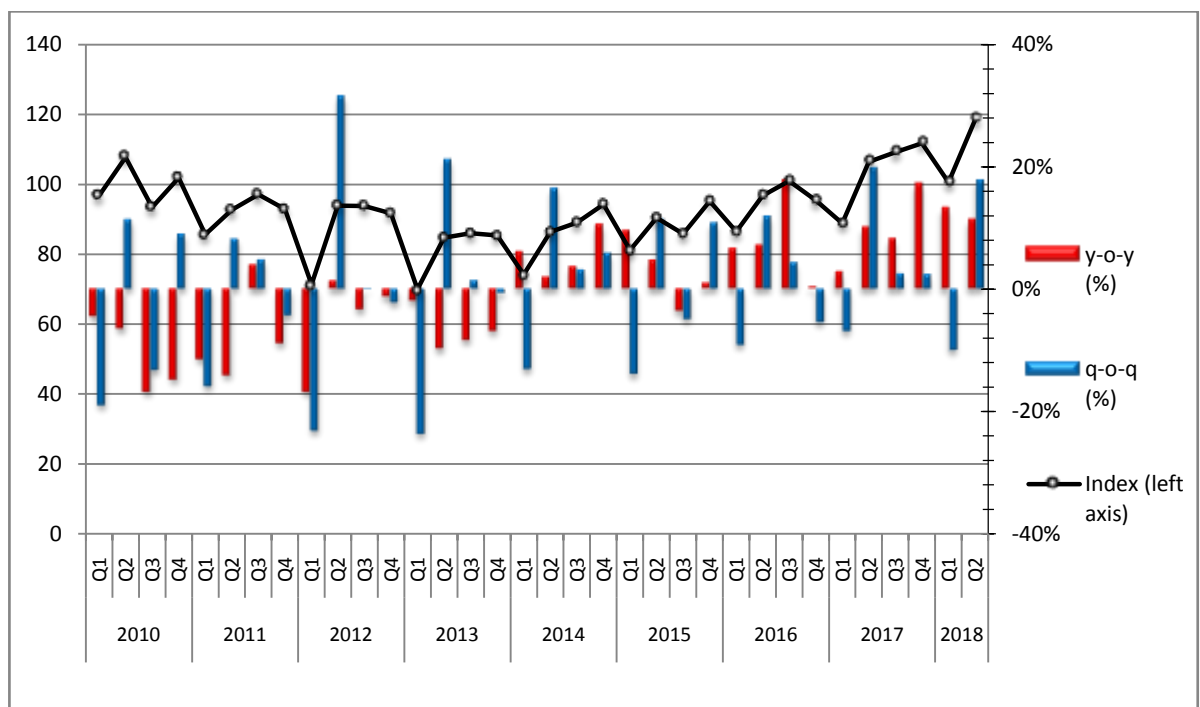
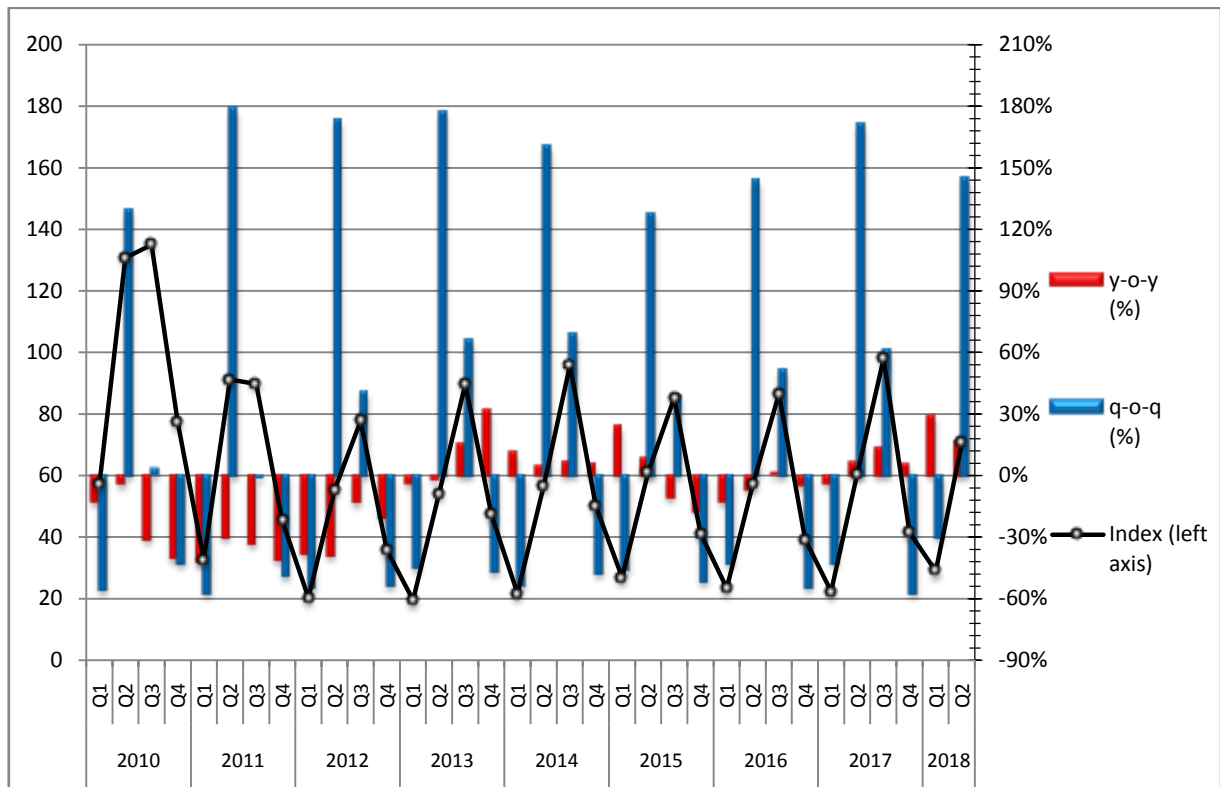


Table 3. Turnover Index in Travel Agency, Tour Operator Reservation Service and Related Activities (div. 79 Nace rev. 2) Base Year: 2010=100.0

Year	Quarter	Index (div 79)	y-o-y change	q-o-q change
2010	Q1	57.1	-12.7%	-56.2%
	Q2	130.8	-4.5%	129.1%
	Q3	135.0	-31.5%	3.2%
	Q4	77.2	-40.8%	-42.8%
	<i>Annual average</i>	100.0	-24.5%	
2011	Q1	32.7	-42.7%	-57.6%
	Q2	91.2	-30.3%	178.9%
	Q3	89.8	-33.5%	-1.5%
	Q4	45.4	-41.2%	-49.4%
	<i>Annual average</i>	64.8	-35.2%	
2012	Q1	20.3	-37.9%	-55.3%
	Q2	55.4	-39.3%	172.9%
	Q3	77.7	-13.5%	40.3%
	Q4	35.8	-21.1%	-53.9%
	<i>Annual average</i>	47.3	-27.0%	
2013	Q1	19.5	-3.9%	-45.5%
	Q2	54.1	-2.3%	177.4%
	Q3	89.7	15.4%	65.8%
	Q4	47.2	31.8%	-47.4%
	<i>Annual average</i>	52.6	11.2%	
2014	Q1	21.7	11.3%	-54.0%
	Q2	56.6	4.6%	160.8%
	Q3	95.8	6.8%	69.3%
	Q4	50.0	5.9%	-47.8%
	<i>Annual average</i>	56.0	6.5%	
2015	Q1	26.9	24.0%	-46.2%
	Q2	61.3	8.3%	127.9%
	Q3	85.3	-11.0%	39.2%
	Q4	41.2	-17.6%	-51.7%
	<i>Annual average</i>	53.7	-4.1%	
2016	Q1	23.4	-13.0%	-43.2%
	Q2	57.0	-7.0%	143.6%
	Q3	86.5	1.4%	51.8%
	Q4	39.2	-4.9%	-54.7%
	<i>Annual average</i>	51.5	-4.1%	
2017	Q1	22.4	-4.3%	-42.9%
	Q2	60.7	6.5%	171.0%
	Q3	98.0	13.3%	61.4%
	Q4	41.5	5.9%	-57.7%
	<i>Annual average</i>	55.7	8.2%	
2018	Q1*	28.9	29.0%	-30.4%
	Q2	70.8	16.6%	145.0%

* Revised data

Graph 5. Evolution of Turnover Index in Travel Agency, Tour Operator Reservation Service and Related Activities - div. 79 Nace rev. 2 (2010=100.0)



EXPLANATORY NOTES

Turnover indices in Transport sector The turnover indices in services are important business indicators, which show the evolution of the services market. The purpose of these indices is to estimate the activity of the surveyed sector in value terms. Turnover comprises the totals invoiced by the observation unit during the reference period (quarter) and corresponds to the market sales of goods and services supplied to third parties. Subsidies on goods or services are also included. Turnover excludes VAT and other similar deductible taxes directly linked to turnover, as well as all duties and taxes on the goods or services invoiced by the observation unit. Income classified as other operating income, financial income and extraordinary income in company accounts is also excluded from turnover.

Legal basis The Turnover indices in Transport Sector are compiled on a quarterly basis in compliance with Council Regulation (EC) No 1165/98 concerning short-term statistics as well as pursuant to the requirements Regulation (EC) 1158/2005 of the European Parliament and Council amending the Council Regulation (EC) No 1165/98.

Reference Period April 1st 2018 - June 30th 2018

New Base Year 2010=100.0

Revision The Turnover Indices in Transport Sector have been revised with new base year 2010=100.0.

The revision was carried out in the framework agreement of the Member-States of the EU and is obligatory for reasons of comparability. These indicators are revised every five years and specifically in years ending in "0" and "5".

Coverage The compilation of these indices comprises enterprises with year turnovers equal or higher than 250.000 euro, represented by a sample of 300 enterprises covering the total of the country.

Methodology The Turnover Indices in Transport Sector cover the whole country and are compiled for divisions 49 – land transport / transport via pipelines, 50 – water transport, 51 – air transport, 52 – warehousing and support activities for transportation and 79 - travel agency, tour operator reservation service and related activities of NACE – Rev.2. statistical classification.

The turnover indices in Transport sector are estimated by applying the forward chaining technique. In a first stage, the floating base index is calculated by comparing the estimated turnover value of the current quarter (on the basis of a sample of enterprises) with the corresponding value of the previous quarter. The fixed index of any two-digit division of business activity for the current quarter results from the multiplication of the floating base index by the fixed index of the previous quarter.