

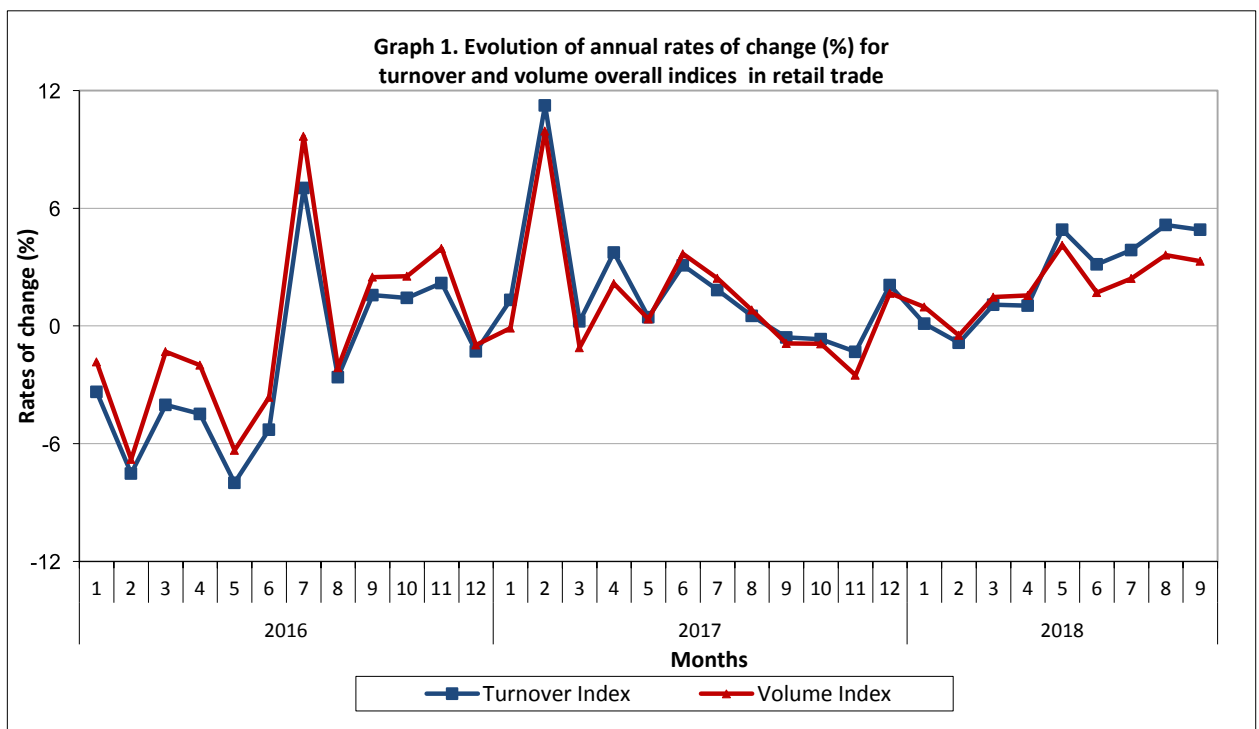


PRESS RELEASE

TURNOVER INDEX IN RETAIL TRADE: September 2018, y-o-y increase 4.9%

The Hellenic Statistical Authority announces the turnover and volume indices in retail trade with new base year 2015 =100.0 for September 2018 according to provisional and reduced data to a typical month as follows:

- The overall turnover index in retail trade in September 2018 increased by 4.9% compared with the corresponding index of September 2017, while compared with the corresponding index of August 2018 decreased by 2.1% (Tables 1, 2).
- The overall volume index in retail trade (i.e. turnover in retail trade at constant prices) in September 2018 increased by 3.3% compared with the corresponding index of September 2017, while compared with the corresponding index of August 2018 decreased by 6.2% (Tables 1, 2).
- The seasonally adjusted overall turnover index in September 2018 compared with the corresponding index of August 2018 remained unchanged (Table 5).
- The seasonally adjusted overall volume index in September 2018 compared with the corresponding index of August 2018 decreased by 0.1% (Table 5).



Information

Economic and Short-Term Indicators Division

Retail Sales Value Index

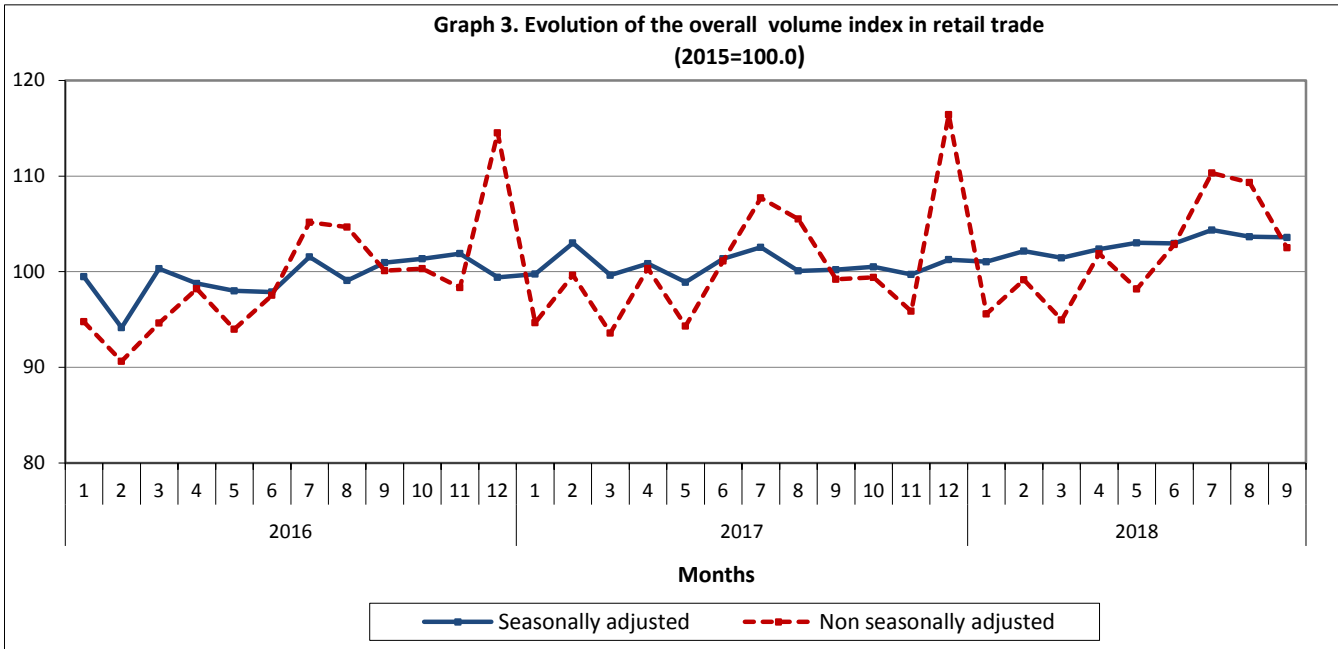
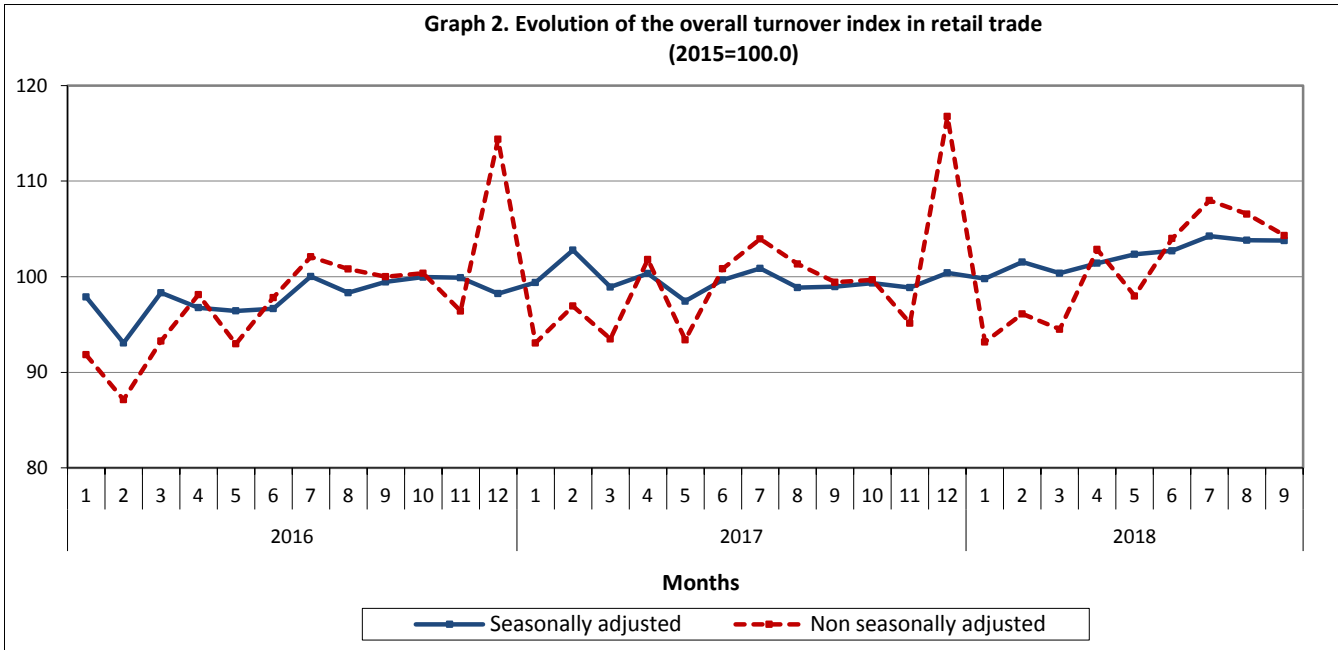
Ioannis Nikolaidis

Tel: +30 213 135 2127

Fax: +30 213 135 2729

E-mail: ret.sal@statistics.gr

Graphs 2 and 3 depict the evolution of both seasonally and non seasonally adjusted overall indices for turnover and volume, respectively, in retail trade.



It should be noted that the whole series with seasonally adjusted indices are recalculated every time a new observation is added in time series. Therefore, the seasonally adjusted data differ from the published data of the previous Press Release.

1. Annual comparison of the turnover index

(Turnover at current prices)

The 4.9% increase of the turnover index in September 2018 compared with the corresponding index in September 2017 is mainly due to the changes in the following store categories:

Specialized store categories	Annual rate of change %
Automotive fuel	10.3
Supermarkets	6.8
Books, Stationery, other goods	6.2
Clothing and footwear	3.2
Pharmaceutical products, cosmetics	-0.4

2. Annual comparison of the volume index

(Turnover at constant prices)

The 3.3% increase of the volume index in September 2018 compared with the corresponding index in September 2017 is mainly due to the changes in the following store categories:

Specialized store categories	Annual rate of change %
Books, Stationery, other goods	7.4
Supermarkets	5.9
Clothing and footwear	4.7
Automotive fuel	1.0
Pharmaceutical products, cosmetics	-1.5

Table 1. Annual rates of change of turnover index and volume index in retail trade
(Reduced data on the basis of a typical month)

Base year: 2015=100.0

Retail Trade Store Categories	Turnover Index			Volume Index		
	September 2018*	September 2017	Annual rate of change (%)	September 2018*	September 2017	Annual rate of change (%)
Overall Index	104.3	99.4	4.9	102.5	99.2	3.3
Overall Index except automotive fuel	104.5	100.5	4.0	103.9	100.5	3.4
I. Main store categories						
Food sector	108.0	101.3	4.0	107.4	101.7	5.6
Automotive fuel	104.7	94.9	10.3	93.7	92.8	1.0
Non-food sector except automotive fuel	99.8	99.6	0.2	101.2	100.2	1.0
II. Specialized store categories						
Supermarkets	109.2	102.2	6.8	110.1	104.0	5.9
Department stores	100.3	107.0	-6.3	100.6	106.1	-5.2
Automotive fuel	104.7	94.9	10.3	93.7	92.8	1.0
Food, beverages, tobacco	100.9	95.9	5.2	99.2	95.5	3.9
Pharmaceutical products, cosmetics	92.8	93.2	-0.4	96.0	97.5	-1.5
Clothing and footwear	95.9	92.9	3.2	88.5	84.5	4.7
Furniture, electrical equipment, household equipment	100.2	100.7	-0.5	106.1	104.9	1.1
Books, Stationery, other goods	116.1	109.3	6.2	123.0	114.5	7.4
Retail sales not in stores	120.4	127.8	-5.8	:	:	:

* Provisional data.

: Volume Index for the "Retail sale not in stores" is not calculated.

Note: The indices and the percentage changes are rounded up one decimal figure, when published.

Table 2. Monthly rates of change of turnover index and volume index in retail trade
(Reduced data on the basis of a typical month)

Base year: 2015=100.0

Retail Trade Store Categories	Turnover Index			Volume Index		
	September 2018*	August 2018	Monthly rate of change (%)	September 2018*	August 2018	Monthly rate of change (%)
Overall Index	104.3	106.5	-2.1	102.5	109.3	-6.2
Overall Index except automotive fuel	104.5	106.1	-1.5	103.9	110.6	-6.1
I. Main store categories						
Food sector	108.0	112.3	-3.8	107.4	112.2	-4.3
Automotive fuel	104.7	110.0	-4.8	93.7	98.6	-5.0
Non-food sector except automotive fuel	99.8	98.9	0.9	101.2	111.1	-8.9
II. Specialized store categories						
Supermarkets	109.2	112.5	-2.9	110.1	114.0	-3.4
Department stores	100.3	107.4	-6.6	100.6	123.9	-18.8
Automotive fuel	104.7	110.0	-4.8	93.7	98.6	-5.0
Food, beverages, tobacco	100.9	110.9	-9.0	99.2	109.7	-9.6
Pharmaceutical products, cosmetics	92.8	95.9	-3.2	96.0	98.5	-2.5
Clothing and footwear	95.9	95.7	0.2	88.5	126.0	-29.8
Furniture, electrical equipment, household equipment	100.2	97.3	3.0	106.1	106.2	-0.1
Books, Stationery, other goods	116.1	105.1	10.5	123.0	112.1	9.7
Retail sales not in stores	120.4	123.5	-2.5	:	:	:

* Provisional data.

: Volume Index for the "Retail sale not in stores" is not calculated.

Note: The indices and the percentage changes are rounded up one decimal figure, when published.

Table 3. Evolution of the turnover index in retail trade
(Reduced data on the basis of a typical month)

Base year: 2015=100.0

Year and month	Overall Index		Overall index except automotive fuel		Food sector		Automotive fuel sector		Non-food sector except automotive fuel		
	Index	Annual rate of change (%)	Index	Annual rate of change (%)	Index	Annual rate of change (%)	Index	Annual rate of change (%)	Index	Annual rate of change (%)	
2016:	1	91.8	-3.4	92.5	-1.7	91.0	-2.4	88.9	-11.1	94.4	-0.8
	2	87.1	-7.5	88.7	-5.4	89.0	-5.8	79.8	-17.2	88.4	-4.9
	3	93.3	-4.0	94.8	-1.8	97.9	0.2	86.0	-14.0	91.1	-4.4
	4	98.1	-4.5	100.8	-2.0	100.6	-3.1	85.7	-15.9	101.1	-0.7
	5	93.0	-8.0	94.4	-6.0	92.8	-7.6	86.3	-17.1	96.4	-4.0
	6	97.8	-5.3	99.2	-2.3	101.1	-2.9	91.3	-18.3	96.9	-1.4
	7	102.1	7.0	103.2	8.0	102.8	5.3	96.6	2.4	103.7	11.6
	8	100.8	-2.6	101.9	-0.8	107.9	-1.8	95.5	-11.2	94.6	1.4
	9	100.0	1.6	101.8	2.4	101.8	2.3	91.4	-2.3	101.9	2.4
	10	100.4	1.4	101.6	1.8	102.0	3.4	94.5	-0.2	101.0	-0.3
	11	96.4	2.2	97.5	3.4	93.6	3.3	91.0	-3.4	102.3	3.2
	12	114.4	-1.3	116.9	-1.7	109.3	-0.6	102.7	1.0	126.2	-3.2
Average		97.9	-2.1	99.4	-0.6	99.2	-0.8	90.8	-9.2	99.8	-0.2
2017:	1	93.1	1.3	92.0	-0.5	91.8	0.9	97.6	9.8	92.3	-2.1
	2	96.9	11.2	96.4	8.7	99.4	11.8	99.2	24.2	93.0	5.1
	3	93.5	0.2	93.4	-1.6	93.9	-4.1	94.2	9.5	92.8	1.9
	4	101.8	3.7	103.0	2.2	104.3	3.6	96.6	12.8	101.6	0.5
	5	93.4	0.4	94.8	0.4	93.8	1.1	87.6	1.5	95.9	-0.5
	6	100.8	3.1	102.2	3.1	101.6	0.5	95.1	4.1	103.0	6.3
	7	103.9	1.8	105.3	2.1	103.6	0.7	98.1	1.6	107.5	3.6
	8	101.3	0.5	101.6	-0.3	105.9	-1.9	100.6	5.3	96.3	1.8
	9	99.4	-0.6	100.5	-1.3	101.3	-0.5	94.9	3.8	99.6	-2.3
	10	99.7	-0.7	99.7	-1.8	97.4	-4.6	99.9	5.7	102.7	1.7
	11	95.1	-1.3	95.2	-2.4	87.5	-6.6	95.2	4.7	104.9	2.6
	12	116.8	2.1	119.4	2.1	110.1	0.7	105.7	2.9	131.0	3.8
Average		99.6	1.8	100.3	0.9	99.2	0.1	97.1	6.9	101.7	1.9
2018:	1	93.2	0.1	92.0	-0.1	89.9	-2.1	99.8	2.3	94.6	2.5
	2	96.1	-0.9	96.0	-0.5	99.0	-0.4	98.0	-1.2	92.6	-0.5
	3	94.5	1.1	95.5	2.3	96.3	2.5	91.2	-3.2	94.9	2.2
	4	102.8	1.0	104.0	0.9	106.1	1.8	99.3	2.7	101.6	0.0
	5	98.0	4.9	98.7	4.2	99.5	6.0	96.0	9.5	98.0	2.2
	6	104.0	3.1	104.6	2.3	105.8	4.2	102.9	8.2	103.3	0.3
	7	108.0	3.9	108.2	2.8	107.1	3.4	108.3	10.3	109.9	2.3
	8	106.5	5.2	106.1	4.4	112.3	6.0	110.0	9.4	98.9	2.7
	*9	104.3	4.9	104.5	4.0	108.0	6.6	104.7	10.3	99.8	0.2

* Provisional data.

Note: The indices and the percentage changes are rounded up one decimal figure, when published.

Table 4. Evolution of the volume index in retail trade
(Reduced data on the basis of a typical month)

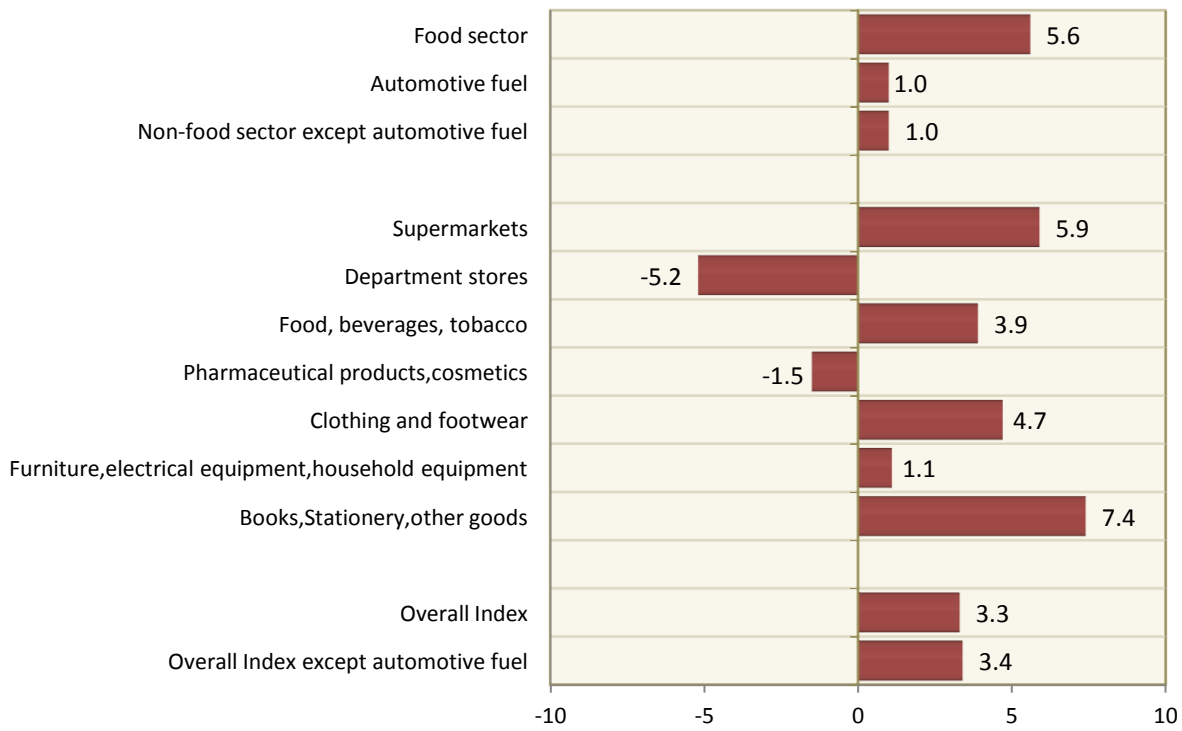
Base year: 2015=100.0

Year and month	Overall Index		Overall index except automotive fuel		Food sector		Automotive fuel sector		Non-food sector except automotive fuel		
	Index	Annual rate of change (%)	Index	Annual rate of change (%)	Index	Annual rate of change (%)	Index	Annual rate of change (%)	Index	Annual rate of change (%)	
2016:	1	94.8	-1.8	94.8	-0.2	91.3	-2.4	97.0	-8.6	99.7	2.9
	2	90.6	-6.8	91.5	-5.6	89.6	-5.1	89.7	-8.7	94.4	-6.5
	3	94.6	-1.3	95.3	-0.1	98.7	1.8	95.0	-3.1	90.9	-2.5
	4	98.2	-2.0	100.0	-0.4	101.7	-1.1	92.4	-6.2	97.8	0.3
	5	94.0	-6.3	94.9	-5.4	93.6	-6.9	91.2	-7.5	96.6	-3.3
	6	97.5	-3.6	98.5	-1.5	101.9	-1.9	94.4	-10.3	94.1	-0.9
	7	105.2	9.7	106.2	9.6	103.2	4.9	100.8	13.4	110.7	16.5
	8	104.7	-2.1	105.6	-1.0	108.0	-2.3	100.6	-4.7	103.3	1.7
	9	100.1	2.5	101.5	3.2	102.7	3.6	95.2	-0.5	99.9	2.7
	10	100.3	2.5	101.2	3.1	103.0	4.6	97.1	-1.5	98.9	1.4
	11	98.3	3.9	99.3	5.6	95.1	5.1	93.9	-4.9	104.8	6.1
	12	114.5	-1.0	117.0	-0.7	110.9	0.1	103.5	-4.0	124.4	-1.6
Average		99.4	-0.6	100.5	0.5	100.0	0.0	95.9	-4.1	101.3	1.3
2017:	1	94.7	-0.1	94.3	-0.5	91.5	0.2	92.8	-4.3	99.2	-0.5
	2	99.6	9.9	100.0	9.4	99.1	10.6	94.3	5.1	102.8	8.9
	3	93.6	-1.1	93.9	-1.5	93.8	-5.0	90.5	-4.7	94.9	4.4
	4	100.3	2.2	101.9	1.9	103.7	2.0	92.3	-0.1	100.6	2.9
	5	94.3	0.4	96.1	1.3	94.3	0.8	85.3	-6.5	99.3	2.7
	6	101.1	3.7	102.6	4.2	102.8	0.9	94.3	-0.1	103.1	9.6
	7	107.7	2.4	109.6	3.2	104.6	1.3	98.2	-2.5	117.6	6.2
	8	105.5	0.8	106.4	0.7	106.6	-1.3	99.5	-1.1	108.0	4.6
	9	99.2	-0.9	100.5	-0.9	101.7	-0.9	92.8	-2.5	100.2	0.3
	10	99.4	-0.9	99.7	-1.5	98.1	-4.8	97.5	0.4	102.7	3.9
	11	95.9	-2.5	96.5	-2.9	87.9	-7.6	91.4	-2.6	108.7	3.7
	12	116.4	1.7	119.6	2.2	110.8	-0.1	101.2	-2.2	132.1	6.2
Average		100.6	1.2	101.8	1.3	99.6	-0.4	94.2	-1.8	105.8	4.4
2018:	1	95.6	1.0	95.2	0.9	89.9	-1.7	94.8	2.2	104.0	4.8
	2	99.2	-0.5	99.9	-0.1	99.0	-0.1	93.3	-1.0	103.3	0.5
	3	94.9	1.5	96.5	2.8	96.4	2.8	87.4	-3.4	98.4	3.7
	4	101.9	1.5	103.6	1.7	106.3	2.5	93.4	1.3	101.8	1.2
	5	98.2	4.1	100.0	4.1	99.5	5.5	87.5	2.6	102.2	2.9
	6	102.8	1.7	104.6	1.9	106.0	3.1	92.2	-2.2	104.4	1.2
	7	110.3	2.4	112.3	2.5	106.9	2.2	97.1	-1.1	121.9	3.7
	8	109.3	3.6	110.6	3.9	112.2	5.3	98.6	-1.0	111.1	2.8
	*9	102.5	3.3	103.9	3.4	107.4	5.6	93.7	1.0	101.2	1.0

* Provisional data.

Note: The indices and the percentage changes are rounded up one decimal figure. when published.

Graph 4. Annual rate of change (%) of the volume indices in retail trade for September 2018/2017



Graph 5. Monthly rate of change (%) of the volume indices in retail trade for September 2018 / August 2018

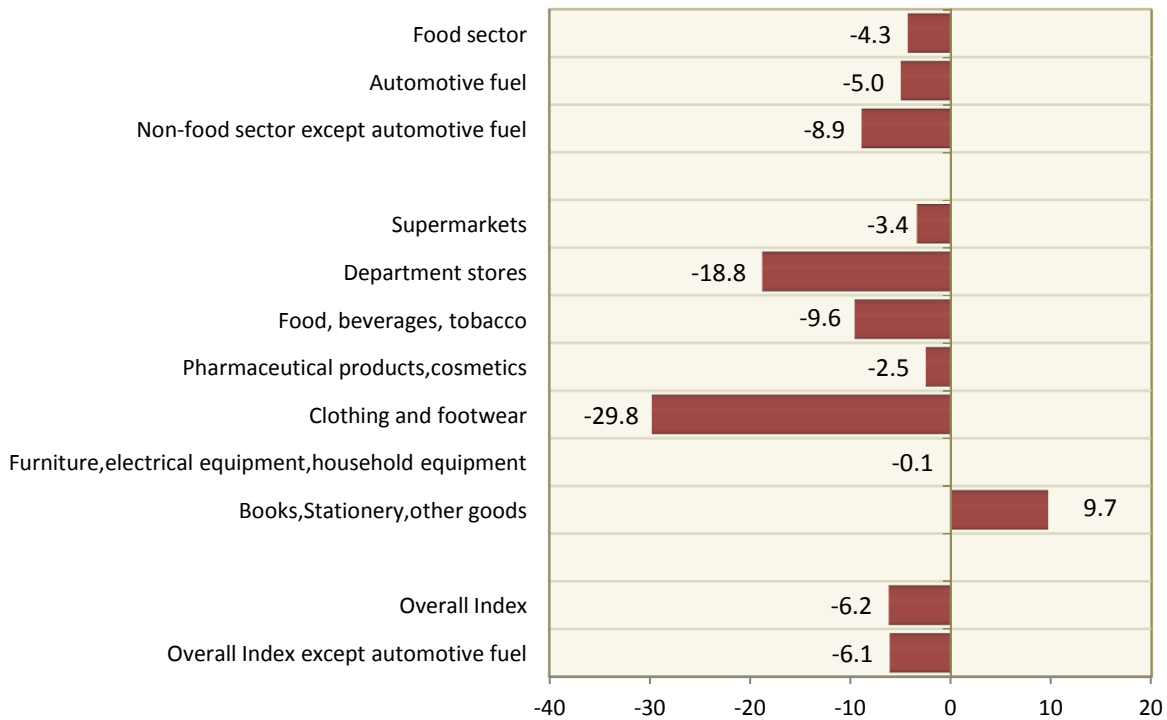


Table 5. Monthly rates of change of seasonally adjusted turnover and volume Index

Base year: 2015=100.0

Retail Trade Store Categories	Turnover Index			Volume Index		
	September 2018	August 2018	Monthly rate of change (%)	September 2018	August 2018	Monthly rate of change (%)
Overall Index	103.8	103.8	0.0	103.6	103.6	-0.1
Overall Index except automotive fuel	103.8	103.8	-0.1	105.0	105.1	-0.1
I. Main store categories						
Food sector	105.1	103.9	1.1	104.9	103.8	1.0
Automotive fuel	105.4	105.2	0.1	94.7	94.6	0.1
Non-food sector except automotive fuel	101.9	103.9	-1.9	108.2	109.1	-0.8
II. Specialized store categories						
Supermarkets	106.6	105.4	1.1	107.7	106.6	1.0
Department stores	98.6	102.7	-4.0	104.1	108.2	-3.8
Automotive fuel	105.4	105.2	0.1	94.7	94.6	0.1
Food, beverages, tobacco	97.1	96.3	0.8	95.6	95.1	0.4
Pharmaceutical products, cosmetics	96.8	99.1	-2.3	99.7	102.2	-2.4
Clothing and footwear	106.1	105.8	0.3	111.2	110.2	0.8
Furniture, electrical equipment, household equipment	103.0	103.1	-0.1	110.4	110.4	0.0
Books, Stationery, other goods	111.5	111.4	0.0	118.2	118.2	0.0
Retail sales not in stores	127.9	126.2	1.3	:	:	:

: Volume Index for the "Retail sale not in stores" is not calculated.

Note: The indices and the percentage changes are rounded up one decimal figure, when published.

Table 6. Monthly evolution of the seasonally adjusted turnover Index

Base year: 2015=100.0

Year and month	Overall Index		Overall index except automotive fuel		Food sector		Automotive fuel sector		Non-food sector except automotive fuel		
	Index	Monthly rate of change (%)	Index	Monthly rate of change (%)	Index	Monthly rate of change (%)	Index	Monthly rate of change (%)	Index	Monthly rate of change (%)	
2016:	1	97.9	-1.6	100.0	-0.6	99.2	0.5	89.6	-6.7	100.7	-1.7
	2	93.1	-4.9	95.7	-4.3	94.2	-5.0	83.5	-6.8	97.1	-3.6
	3	98.3	5.6	100.2	4.7	101.0	7.2	89.4	7.0	99.2	2.1
	4	96.8	-1.6	98.8	-1.4	97.6	-3.4	87.5	-2.1	100.1	0.9
	5	96.4	-0.3	98.1	-0.7	96.5	-1.1	90.8	3.8	99.7	-0.4
	6	96.7	0.2	98.3	0.2	98.4	2.0	89.9	-1.1	98.0	-1.7
	7	100.0	3.5	99.5	1.3	100.7	2.4	95.2	5.9	99.6	1.6
	8	98.3	-1.7	99.8	0.3	99.5	-1.2	90.6	-4.8	100.6	1.0
	9	99.4	1.1	101.0	1.2	100.0	0.5	92.0	1.5	102.3	1.7
	10	99.9	0.5	101.3	0.3	102.3	2.3	93.3	1.4	100.3	-2.0
	11	99.9	-0.1	101.6	0.4	102.1	-0.2	92.2	-1.2	101.2	0.9
	12	98.2	-1.7	99.0	-2.6	98.7	-3.4	96.5	4.7	99.2	-1.9
Average		97.9		99.5		99.2		90.9		99.8	
2017:	1	99.4	1.2	100.0	1.0	100.5	1.8	97.4	1.0	99.4	0.2
	2	102.8	3.4	102.8	2.8	103.4	2.9	101.8	4.5	102.3	2.9
	3	98.9	-3.8	99.1	-3.6	97.7	-5.5	98.0	-3.7	101.0	-1.3
	4	100.3	1.4	100.9	1.8	100.6	3.0	98.2	0.2	101.2	0.3
	5	97.4	-2.9	99.0	-1.8	97.9	-2.7	92.7	-5.6	100.1	-1.1
	6	99.7	2.3	100.9	1.9	99.0	1.1	94.5	1.9	103.3	3.3
	7	100.9	1.2	100.9	0.0	100.5	1.5	96.2	1.8	102.2	-1.1
	8	98.9	-2.0	99.6	-1.3	98.1	-2.4	96.1	-0.1	101.7	-0.5
	9	99.0	0.1	99.8	0.2	99.1	1.0	95.7	-0.4	101.0	-0.7
	10	99.3	0.4	99.8	-0.1	98.0	-1.1	98.4	2.8	102.2	1.2
	11	98.9	-0.5	99.7	-0.1	96.6	-1.4	96.7	-1.7	103.2	1.0
	12	100.4	1.6	101.2	1.6	99.7	3.3	99.6	3.0	103.0	-0.2
Average		99.6		100.3		99.2		97.1		101.7	
2018:	1	99.8	-0.6	100.5	-0.7	98.9	-0.8	99.5	-0.1	102.3	-0.7
	2	101.5	1.7	101.7	1.2	101.9	3.0	100.0	0.5	102.0	-0.3
	3	100.4	-1.2	101.7	0.0	100.7	-1.1	95.7	-4.4	103.1	1.1
	4	101.4	1.1	101.8	0.1	102.0	1.3	100.8	5.4	101.8	-1.2
	5	102.3	0.9	103.0	1.2	103.4	1.4	101.3	0.5	102.6	0.8
	6	102.7	0.3	102.9	-0.1	103.0	-0.4	102.4	1.1	103.1	0.5
	7	104.2	1.5	103.3	0.4	103.5	0.5	105.7	3.2	103.9	0.7
	8	103.8	-0.4	103.8	0.5	103.9	0.4	105.2	-0.5	103.9	0.0
	9	103.8	0.0	103.8	-0.1	105.1	1.1	105.4	0.1	101.9	-1.9

Note: The indices and the percentage changes are rounded up one decimal figure, when published.

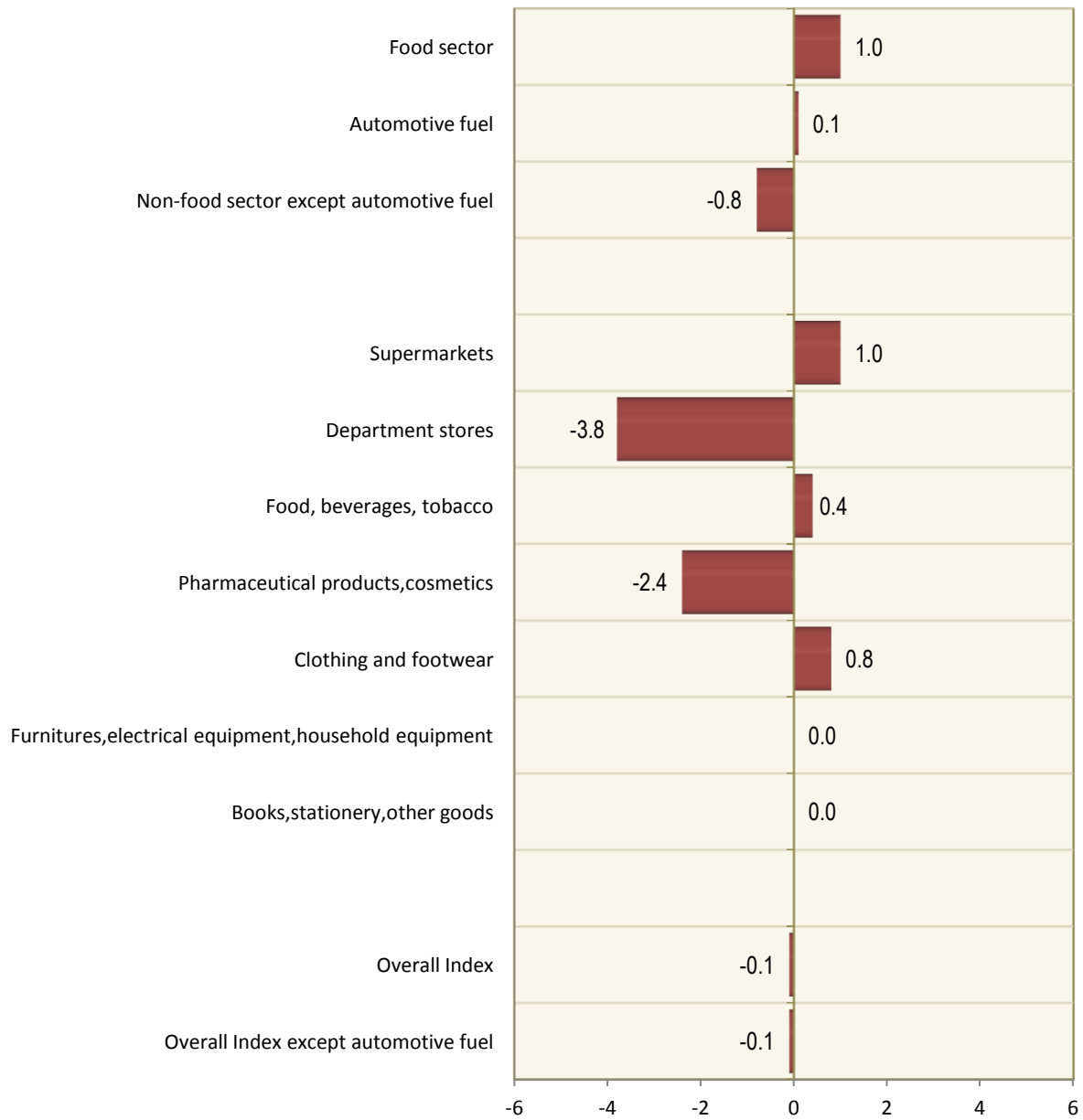
Table 7. Monthly evolution of the seasonally adjusted volume Index

Base year: 2015=100.0

Year and month	Overall Index		Overall index except automotive fuel		Food sector		Automotive fuel sector		Non-food sector except automotive fuel		
	Index	Monthly rate of change (%)	Index	Monthly rate of change (%)	Index	Monthly rate of change (%)	Index	Monthly rate of change (%)	Index	Monthly rate of change (%)	
2016:	1	99.5	-0.7	100.8	0.1	99.8	1.1	99.5	-0.7	102,2	-0.8
	2	94.1	-5.4	95.5	-5.2	94.9	-4.9	94.1	-5.4	97.8	-4.3
	3	100.3	6.5	101.3	6.1	102.3	7.8	100.3	6.5	100.3	2.6
	4	98.8	-1.5	100.0	-1.3	99.1	-3.1	98.8	-1.5	101.4	1.1
	5	98.0	-0.8	98.6	-1.4	96.8	-2.4	98.0	-0.8	100.8	-0.6
	6	97.9	-0.1	98.9	0.4	99.2	2.5	97.9	-0.1	99.8	-1.0
	7	101.5	3.8	102.1	3.2	101.0	1.8	101.5	3.8	101.6	1.8
	8	99.1	-2.4	100.1	-1.9	99.8	-1.2	99.1	-2.4	102.0	0.3
	9	100.9	1.9	102.1	2.0	101.0	1.3	100.9	1.9	103.4	1.4
	10	101.3	0.4	102.6	0.5	103.4	2.3	101.3	0.4	102.3	-1.0
	11	101.9	0.5	103.5	0.9	103.3	0.0	101.9	0.5	104.0	1.6
	12	99.4	-2.4	100.2	-3.2	99.4	-3.8	99.4	-2.4	101.7	-2.2
Average		99.4		100.5		100.0		99.4		101.4	
2017:	1	99.7	0.3	100.8	0.6	100.4	1.0	99.7	0.3	102.6	0.8
	2	103.0	3.3	103.9	3.0	103.6	3.2	103.0	3.3	106.0	3.4
	3	99.6	-3.3	100.3	-3.4	97.8	-5.6	99.6	-3.3	104.5	-1.4
	4	100.8	1.2	101.8	1.6	100.6	2.9	100.8	1.2	104.9	0.4
	5	98.9	-1.9	100.4	-1.4	98.0	-2.6	98.9	-1.9	104.8	-0.1
	6	101.3	2.5	102.7	2.3	100.0	2.0	101.3	2.5	107.2	2.3
	7	102.5	1.2	103.6	0.9	101.5	1.6	102.5	1.2	106.1	-1.0
	8	100.1	-2.4	101.2	-2.3	98.7	-2.8	100.1	-2.4	106.3	0.2
	9	100.2	0.1	101.4	0.3	99.7	1.0	100.2	0.1	105.9	-0.4
	10	100.5	0.3	101.4	-0.1	98.5	-1.1	100.5	0.3	106.7	0.8
	11	99.7	-0.8	101.0	-0.4	96.4	-2.2	99.7	-0.8	107.2	0.4
	12	101.3	1.6	102.7	1.7	99.7	3.4	101.3	1.6	107.8	0.6
Average		100.6		101.8		99.6		100.6		105.8	
2018:	1	101.0	-0.2	102.2	-0.5	99.2	-0.5	101.0	-0.2	107.7	-0.1
	2	102.1	1.1	103.3	1.1	102.7	3.6	102.1	1.1	106.6	-1.1
	3	101.4	-0.7	103.3	0.0	100.9	-1.7	101.4	-0.7	108.3	1.6
	4	102.4	0.9	103.5	0.2	102.8	1.8	102.4	0.9	107.3	-0.9
	5	103.0	0.6	104.4	0.9	103.3	0.5	103.0	0.6	108.3	0.9
	6	102.9	-0.1	104.4	0.0	102.9	-0.3	102.9	-0.1	108.1	-0.2
	7	104.3	1.4	105.4	0.9	103.5	0.5	104.3	1.4	109.2	1.1
	8	103.6	-0.7	105.1	-0.3	103.8	0.4	103.6	-0.7	109.1	-0.1
	9	103.6	-0.1	105.0	-0.1	104.9	1.0	103.6	-0.1	108.2	-0.8

Note: The indices and the percentage changes are rounded up one decimal figure, when published.

Graph 6. Monthly rate of change (%) of the seasonally adjusted volume indices in retail trade, for September 2018 / August 2018



It should be noted that the Retail Trade Turnover and Volume indices of August 2018, which had been announced as provisional in the previous press release, have been revised, due to change of the base year and additional data submitted by enterprises, as follows:

Retail Trade Store Categories	Turnover Index of August 2018				Volume Index of August 2018			
	Provisional (2010=100)	Annual rate of change (%)	Revised (2015=100)	Annual rate of change (%)	Provisional (2010=100)	Annual rate of change (%)	Revised (2015=100)	Annual rate of change (%)
Overall Index	77.0	4.8	106.5	5.2	77.5	3.2	109.3	3.6
Overall Index except automotive fuel	77.8	4.3	106.1	4.4	80.4	3.7	110.6	3.9
I. Main store categories								
Food sector	91.0	6.3	112.3	6.0	86.0	5.4	112.2	5.3
Automotive fuel	75.5	8.0	75.3	9.4	65.2	-2.2	98.6	-1.0
Non-food sector except automotive fuel	64.5	1.9	98.9	2.7	76.3	2.0	111.1	2.8
II. Specialized store categories								
Supermarkets	93.2	6.8	112.5	6.6	91.0	6.1	114.0	5.9
Department stores	77.3	2.5	107.4	2.1	99.2	2.9	123.9	2.6
Automotive fuel	75.5	8.0	110.0	9.4	65.2	-2.2	98.6	-1.0
Food, beverages, tobacco	77.7	3.3	110.9	2.5	72.2	2.1	109.7	1.5
Pharmaceutical products, cosmetics	61.2	2.0	95.9	3.3	65.5	0.8	98.5	2.1
Clothing and footwear	62.9	1.3	95.7	2.4	89.2	0.7	126.0	1.9
Furniture, electrical equipment, household equipment	52.6	4.8	97.3	4.6	66.8	6.7	106.2	6.6
Books, Stationery, other goods	91.3	1.8	105.1	3.4	105.1	3.2	112.1	4.9
Retail sales not in stores	72.3	-9.4	123.5	-10.0	:	:	:	:

: Volume Index for the "Retail sale not in stores" is not calculated.

The final indices of the specialized store categories of August 2018 have been changed in relation to the corresponding provisional indices published in the previous press release. The changes due to new data of the surveyed enterprises are mainly in the economic activities of "Automotive fuel", "Food, beverages, tobacco", "Pharmaceutical products, cosmetics", "Clothing and footwear", "Books, Stationery, other goods" and "Retail sales not in stores".

Generally	The Retail Trade Turnover Index with the current form is being released since August 2005. The Retail Trade Turnover Index is a continuation of the Retail Sales Value Index, which had been compiled during the period 1963 to 2004.
Purpose of the index – definitions	The purpose of the Retail Trade Turnover Index is to depict the evolution of the goods and services market. Turnover comprises the total amounts invoiced by the enterprise during the reference period which correspond to the resale of goods without any further transformation. The data collected each month refers to the actual sales (both retail and wholesale) excluding VAT but including other duties and taxes on the goods.
Legal basis	The compilation of the Retail Trade Turnover Index is governed by Council Regulation (EC) No.1165/98 of 19 November 1998 “concerning short-term statistics” and by Regulation (EC) No.1893/2006 of the European Parliament and of the Council of 20 December 2006 establishing the statistical classification of economic activities NACE Revision 2.
Reference period	Month
Base year	2015=100.0.
Revision	Pursuant to the provisions of the Council Regulation No 1165/98 concerning short-term statistics, the index in question is revised every five (5) years in years ending in 0 or 5. The purpose of revising the Retail Trade Turnover Index is to adapt the index to the changes in the structure of retail trade.
Statistical classification	The NACE Rev.2 statistical classification of economic activities is used in conformity with the Regulation (EC) No 1893/2006 of the European Parliament and of the Council.
Geographical coverage	The index covers the Whole Country with data coming from 72 Regional Units.
Coverage of economic activities	The index covers the division 47 of NACE Rev 2 statistical classification of economic activities.
Statistical survey	In the framework of the survey carried out for the compilation of the Retail Trade Turnover Index (2015=100.0), it was decided to include 38,444 retail trade enterprises listed in the Business Register of ELSTAT having an annual turnover (in 2015) equal to or higher than 140,000 euro. Out of these enterprises a random sample of 1,661 enterprises was selected.
Volume Index	Since 2005 onwards the Retail Trade Volume Index is also being compiled aiming at measuring changes in the volume of retail trade.
Calculating the indices	<p>The turnover index is calculated by the chaining method. First the moving based index is calculated by comparing the estimated turnover value for the current month with the corresponding value of the previous month. Afterwards the fixed base index for the current month is calculated by multiplying the moving-based index by the fixed base index of the previous month.</p> <p>The indices are reduced to a typical month of equal duration. To this end the turnover estimates are multiplied by a suitable correction factor that is calculated by dividing the mean monthly number of working days in the given year by the number of the regular working days in the month under consideration.</p> <p>The Retail Trade Volume Index is calculated by deflating the Retail Trade Turnover Index using the Harmonized Index of Consumer Prices at constant tax rates (HICP-CT) as deflator.</p>
Seasonal Adjustment	Seasonal adjustment is the procedure followed to remove the impact of seasonality on the time series (that is eliminating the monthly effects, e.g. the beginning of the school year, holidays, tourist period etc) in order to improve the comparability over time. The method used is the TRAMO-SEATS method with the use of JDemetra+ 2.0.0. The whole series with seasonally adjusted indices is <u>recalculated</u> every time a <u>new</u> observation is added in time series.
Compiled index series	Since the revision of the Retail Trade Turnover and Volume Indices due to the implementation of the classification NACE Rev 2, parallel time series for the indices including and not including automotive fuels are provided. In addition, seasonally adjusted time series data are compiled.
Publication of data	The time series of Retail Trade Turnover and Volume Indices (2015=100.0), which include fuel have being published since 2000 by categories of aggregated economic activity classes:

Super-markets

Non-specialised stores with food, beverages or tobacco predominating.

Department stores

Other retail sale in non-specialised stores.

Food, beverages, tobacco

Fruit and vegetables, meat products, Fishes, crustaceans and molluscs, bread, cakes, flour confectionery and sugar confectionery. Beverages, tobacco products, other retail sale of food in specialised stores.

Automotive fuel

Automotive fuel in specialised stores.

Pharmaceutical products, Cosmetics

Dispensing chemist, medical and orthopaedic goods, cosmetic and toilet articles in specialised stores.

Clothing and footwear

Textiles, Clothing, footwear and leather goods in specialised stores.

Furniture, electrical equipment, household equipment

Furniture, lighting equipment, audio and video equipment, hardware, paints and glass, electrical household appliances and other household articles, music and video recordings in specialised stores.

Books, stationery and other goods

Books, newspapers and stationery, computers, peripheral units and software, telecommunications equipment, carpets, rugs, wall and floor coverings, sporting equipment, Games and toys. Flowers, Plants, Seeds, Fertilisers, pet animals and pet food, watches and jewellery, other retail sale of new goods in specialised stores.

Retail sale not in stores

Retail sale via mail order houses, via Internet, via stalls and markets of other goods and other retail sale not in stores, stalls or markets.

Food sector

Super-markets , Food, beverages, tobacco

References More information on the methodology concerning the compilation and calculation of the index and for the time series is available on the ELSTAT website: <http://www.statistics.gr/en/statistics/-/publication/DKT39/>