



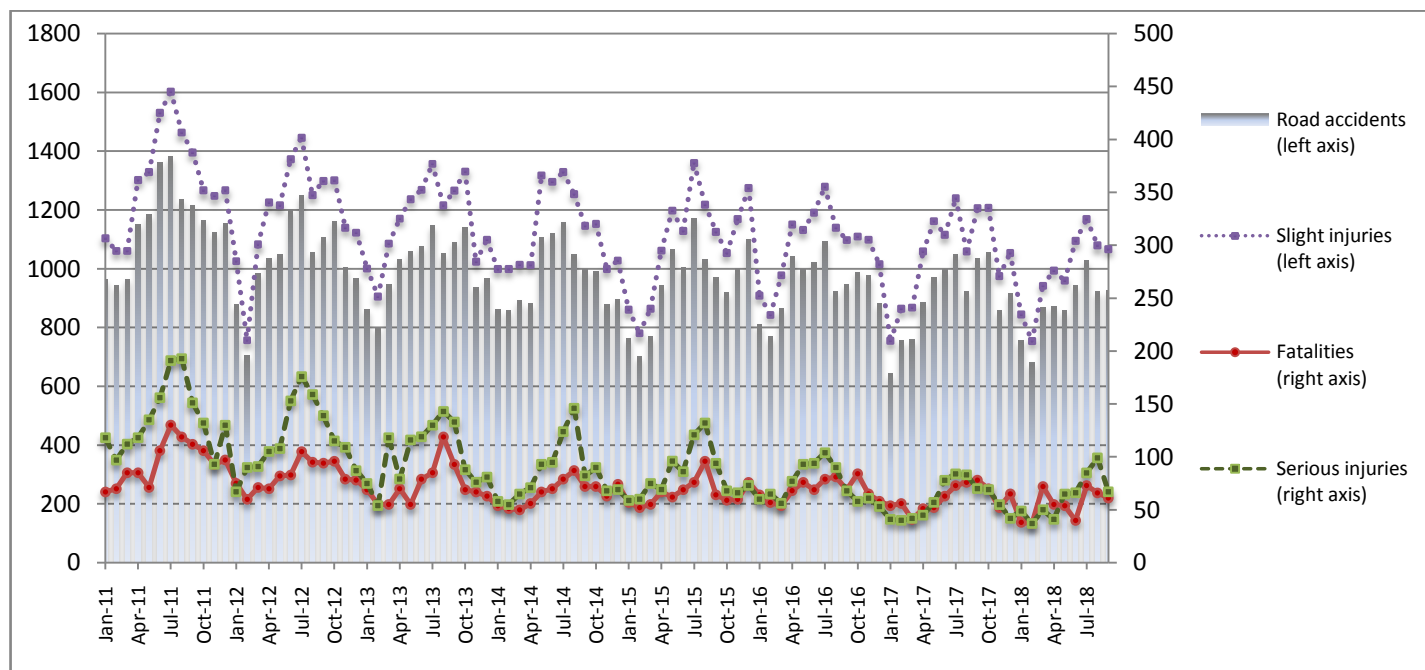
## PRESS RELEASE

### ROAD ACCIDENTS: September 2018

The Hellenic Statistical Authority (ELSTAT) announces provisional<sup>1</sup> data on Road Accidents for September 2018. In particular, the road traffic accidents which occurred in Greece, resulting in death or injury, decreased by 10.3% in comparison with the corresponding month of 2017 (927 road accidents in September 2018, against 1,034 road accidents in September 2017).

The casualties of the injury-causing accidents that occurred in September 2018 were as follows: 61 deaths, 67 serious injuries and 1,067 slight injuries. In contrast, in September 2017 the corresponding figures were: 78 deaths, 70 serious injuries and 1,206 slight injuries. Therefore, road accident casualties in September 2018 decreased by 21.8% for deaths, by 4.3% for serious injuries and by 11.5% for slight injuries.

**Graph 1: Road traffic accidents and casualties,  
January 2011 - September 2018**



Provisional data: Jan 18 –Sep 18

**Information:**

Social Statistics Division

Justice and Public Order Statistics Section

D. Athanasopoulou

Tel: +30 213 1352767, Fax : +30 213 1352764

e-mail: [d.athanasopoulou@statistics.gr](mailto:d.athanasopoulou@statistics.gr)

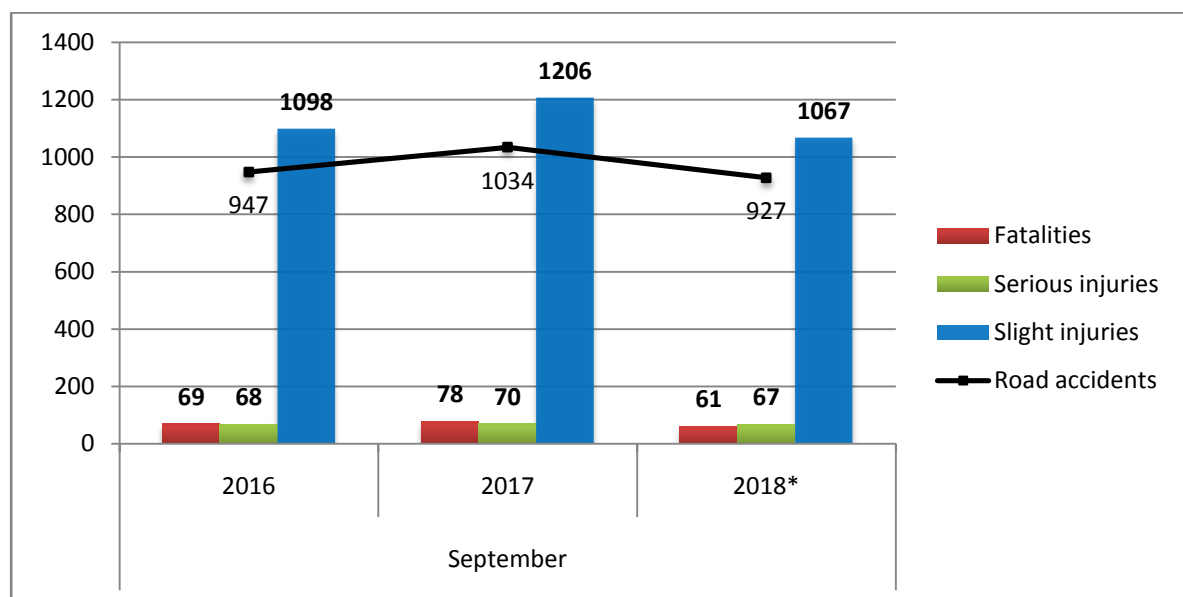
<sup>1</sup> Data for the reference year are provisional until the finalisation of the annual data, which become final 10 months after the end of the reference year. During these 10 months the provisional data are updated on the basis of the data of the Road Accident Forms which are transmitted to ELSTAT by Police Authorities.

**Table 1: Road traffic accidents and casualties, September 2016-2018\***

	September				
	2016	2017	2017/2016 (%)	2018*	2018*/2017 (%)
<b>Road accidents</b>	<b>947</b>	<b>1,034</b>	9.2%	<b>927</b>	-10.3%
<b>Fatalities</b>	<b>69</b>	<b>78</b>	13.0%	<b>61</b>	-21.8%
<b>Total injuries</b>	<b>1,166</b>	<b>1,276</b>	9.4%	<b>1,134</b>	-11.1%
Serious injuries	68	70	2.9%	67	-4.3%
Slight injuries	1,098	1,206	9.8%	1,067	-11.5%

\* Provisional data

**Graph 2: Road traffic accidents and casualties, September 2016-2018\***



\* Provisional data

**Table 2: Road traffic accidents and casualties, by region and department, September 2017 – 2018\***

Region and Department	Road accidents			Fatalities			Serious injuries			Slight injuries		
	2017	2018*	%	2017	2018*	%	2017	2018*	%	2017	2018*	%
<b>Greece Total</b>	<b>1,034</b>	<b>927</b>	<b>-10.3%</b>	<b>78</b>	<b>61</b>	<b>-21.8%</b>	<b>70</b>	<b>67</b>	<b>-4.3%</b>	<b>1,206</b>	<b>1,067</b>	<b>-11.5%</b>
<b>Anatoliki Makedonia, Thraki (East Macedonia and Thrace)</b>	<b>38</b>	<b>40</b>	<b>5.3%</b>	<b>5</b>	<b>2</b>	<b>-60.0%</b>	<b>7</b>	<b>6</b>	<b>-14.3%</b>	<b>37</b>	<b>50</b>	<b>35.1%</b>
Drama	7	8	14.3%	0	0		0	0		12	13	
Evros	11	10	-9.1%	3	1		1	2		8	13	
Kavala	8	15	87.5%	1	1		2	2		7	16	
Xanthi	8	2	-75.0%	1	0		3	1		6	1	
Rodopi	4	5	25.0%	0	0		1	1		4	7	
<b>Kentriki Makedonia (Central Macedonia)</b>	<b>186</b>	<b>173</b>	<b>-7.0%</b>	<b>8</b>	<b>4</b>	<b>-50.0%</b>	<b>4</b>	<b>4</b>	<b>0.0%</b>	<b>222</b>	<b>219</b>	<b>-1.4%</b>
Imathia	5	7	40.0%	1	0		0	0		5	8	
Thessaloniki	155	129	-16.8%	4	2		2	3		192	165	
Kilkis	5	7	40.0%	0	1		1	0		6	7	
Pella	2	6	200.0%	0	1		0	0		2	6	
Pieria	1	3	200.0%	0	0		0	0		1	4	
Serres	7	6	-14.3%	1	0		0	1		8	8	
Chalkidiki	11	15	36.4%	2	0		1	0		8	21	
<b>Dytiki Makedonia (West Macedonia)</b>	<b>10</b>	<b>8</b>	<b>-20.0%</b>	<b>2</b>	<b>5</b>	<b>150.0%</b>	<b>1</b>	<b>3</b>	<b>200.0%</b>	<b>11</b>	<b>4</b>	<b>-63.6%</b>
Grevena	0	1	-	0	0		0	0		0	1	
Kastoria	2	1	-50.0%	1	0		0	1		1	0	
Kozani	8	5	-37.5%	1	4		1	2		10	3	
Florina	0	1	-	0	1		0	0		0	0	
<b>Ipeiros (Epirus)</b>	<b>12</b>	<b>12</b>	<b>0.0%</b>	<b>3</b>	<b>3</b>	<b>0.0%</b>	<b>0</b>	<b>3</b>	<b>-</b>	<b>17</b>	<b>12</b>	<b>-29.4%</b>
Arta	0	1	-	0	1		0	0		0	0	
Thesprotia	2	5	150.0%	1	1		0	3		1	2	
Ioannina	8	6	-25.0%	2	1		0	0		9	10	
Preveza	2	0	-100.0%	0	0		0	0		7	0	
<b>Thessalia (Thessaly)</b>	<b>22</b>	<b>19</b>	<b>-13.6%</b>	<b>5</b>	<b>0</b>	<b>-100.0%</b>	<b>4</b>	<b>6</b>	<b>50.0%</b>	<b>20</b>	<b>24</b>	<b>20.0%</b>
Karditsa	7	4	-42.9%	2	0		0	1		5	4	
Larissa	10	7	-30.0%	2	0		1	3		10	11	
Magnissia	2	3	50.0%	0	0		1	2		1	2	
Trikala	3	5	66.7%	1	0		2	0		4	7	
<b>Ionian Nisia (Ionian Islands)</b>	<b>21</b>	<b>10</b>	<b>-52.4%</b>	<b>3</b>	<b>1</b>	<b>-66.7%</b>	<b>1</b>	<b>1</b>	<b>0.0%</b>	<b>24</b>	<b>9</b>	<b>-62.5%</b>
Zakynthos	1	1	0.0%	0	0		0	0		1	2	
Kerkyra	10	4	-60.0%	2	0		1	1		9	3	
Kefallinia	3	1	-66.7%	0	0		0	0		4	1	
Lefkada	7	4	-42.9%	1	1		0	0		10	3	

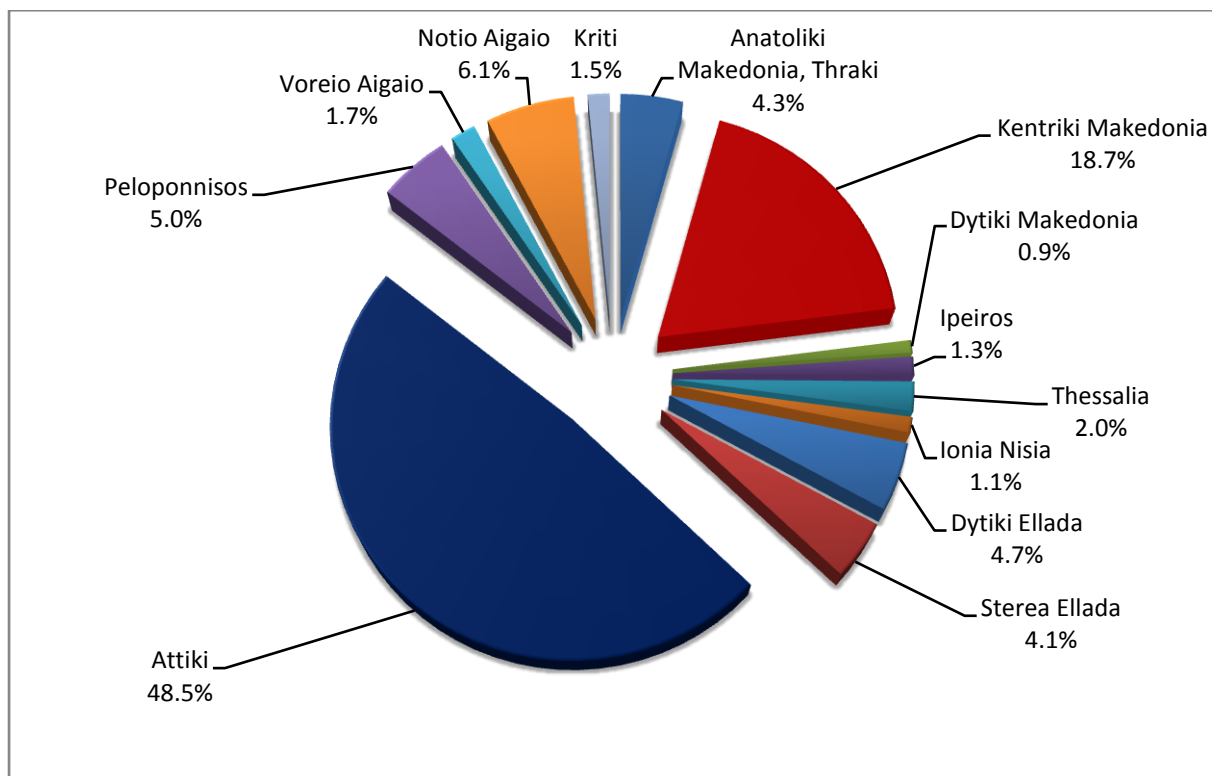
\* Provisional data

**Table 2: Road traffic accidents and casualties, by region and department, September 2017 – 2018\***  
(Continued)

Region and Department	Road accidents			Fatalities			Serious injuries			Slight injuries		
	2017	2018*	%	2017	2018*	%	2017	2018*	%	2017	2018*	%
<b>Dytiki Ellada (West Greece)</b>	<b>46</b>	<b>44</b>	<b>-4.3%</b>	<b>15</b>	<b>10</b>	<b>-33.3%</b>	<b>2</b>	<b>4</b>	<b>100.0%</b>	<b>53</b>	<b>48</b>	<b>-9.4%</b>
Etolia & Akarnania	16	14	-12.5%	6	1		0	1		18	14	
Achaia	23	20	-13.0%	7	3		1	2		28	27	
Ilia	7	10	42.9%	2	6		1	1		7	7	
<b>Stereia Ellada</b>	<b>52</b>	<b>38</b>	<b>-26.9%</b>	<b>7</b>	<b>4</b>	<b>-42.9%</b>	<b>7</b>	<b>4</b>	<b>-42.9%</b>	<b>54</b>	<b>42</b>	<b>-22.2%</b>
Viotia	6	7	16.7%	2	0		0	0		7	8	
Evia	19	14	-26.3%	3	0		2	2		21	16	
Evrytania	0	0	-	0	0		0	0		0	0	
Fthiotida	24	13	-45.8%	2	3		3	2		22	15	
Fokida	3	4	33.3%	0	1		2	0		4	3	
<b>Attiki (Attica)</b>	<b>513</b>	<b>450</b>	<b>-12.3%</b>	<b>13</b>	<b>13</b>	<b>0.0%</b>	<b>24</b>	<b>15</b>	<b>-37.5%</b>	<b>604</b>	<b>528</b>	<b>-12.6%</b>
<b>Peloponnisos (Peloponnese)</b>	<b>59</b>	<b>46</b>	<b>-22.0%</b>	<b>11</b>	<b>5</b>	<b>-54.5%</b>	<b>8</b>	<b>5</b>	<b>-37.5%</b>	<b>71</b>	<b>49</b>	<b>-31.0%</b>
Argolida	11	8	-27.3%	3	0		5	0		13	10	
Arkadia	5	8	60.0%	1	1		0	0		7	10	
Korinthia	15	22	46.7%	1	1		2	4		17	23	
Lakonia	14	2	-85.7%	2	1		1	0		22	1	
Messinia	14	6	-57.1%	4	2		0	1		12	5	
<b>Voreio Aigaio (North Aegean)</b>	<b>16</b>	<b>16</b>	<b>0.0%</b>	<b>0</b>	<b>0</b>	<b>-</b>	<b>2</b>	<b>2</b>	<b>0.0%</b>	<b>18</b>	<b>17</b>	<b>-5.6%</b>
Lesvos	6	9	50.0%	0	0		1	2		6	8	
Samos	8	6	-25.0%	0	0		0	0		11	7	
Chios	2	1	-50.0%	0	0		1	0		1	2	
<b>Notio Aigaio (South Aegean)</b>	<b>42</b>	<b>57</b>	<b>35.7%</b>	<b>1</b>	<b>9</b>	<b>800.0%</b>	<b>5</b>	<b>12</b>	<b>140.0%</b>	<b>59</b>	<b>56</b>	<b>-5.1%</b>
Dodekanissos	21	26	23.8%	1	9		1	5		28	23	
Kyklades	21	31	47.6%	0	0		4	7		31	33	
<b>Kriti (Crete)</b>	<b>17</b>	<b>14</b>	<b>-17.6%</b>	<b>5</b>	<b>5</b>	<b>0.0%</b>	<b>5</b>	<b>2</b>	<b>-60.0%</b>	<b>16</b>	<b>9</b>	<b>-43.8%</b>
Iraklio	7	8	14.3%	2	1		3	0		4	8	
Lassithi	1	0	-100.0%	1	0		1	0		1	0	
Rethymno	4	2	-50.0%	2	2		0	0		6	0	
Chania	5	4	-20.0%	0	2		1	2		5	1	

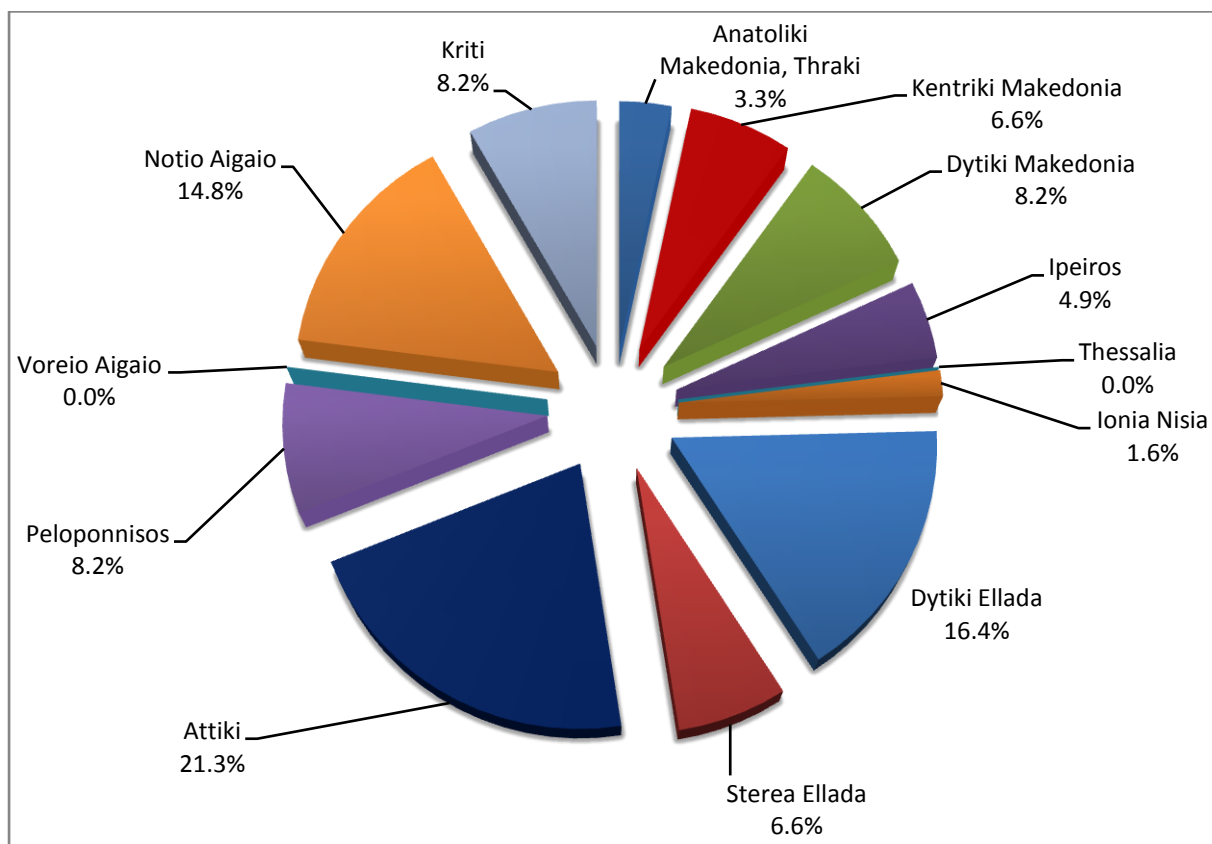
\* Provisional data

**Graph 3: Road traffic accidents by region,  
September 2018 \***



\* Provisional data

**Graph 4: Fatalities by region,  
September 2018 \***



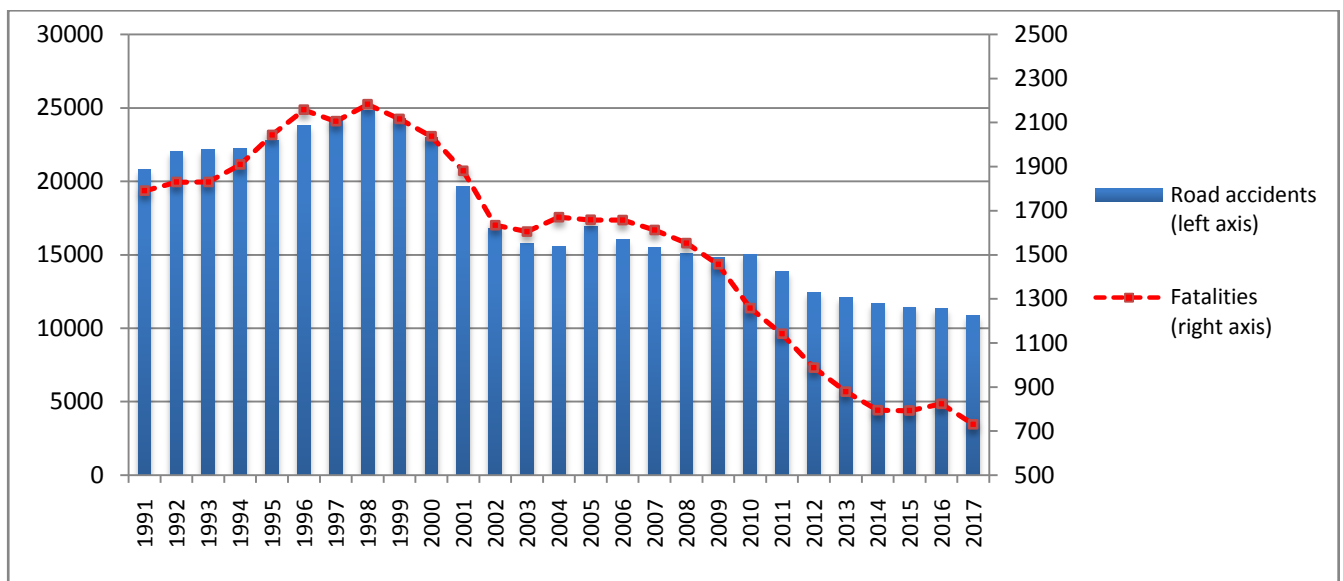
\* Provisional data

**Table 3: Road traffic accidents and casualties for the period January - September 2016, 2017 and 2018\***

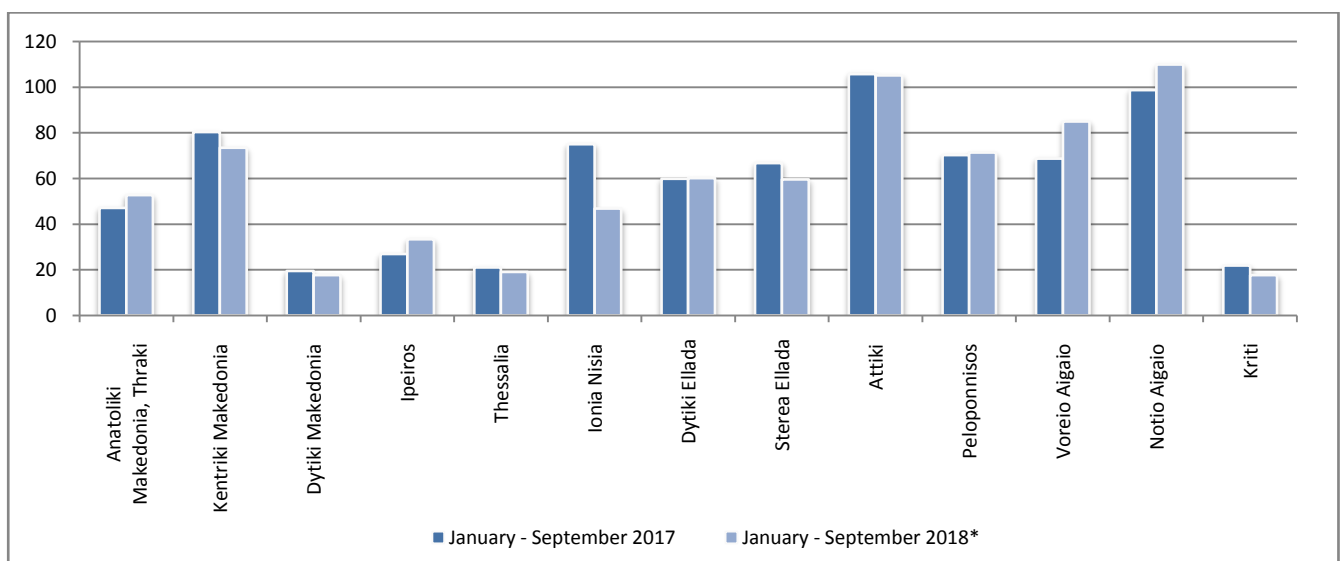
	2016		2017		2018 *
	January - September	Total year	January - September	Total year	January - September
<b>Road Accidents</b>	8,469	<b>11,318</b>	8,020	<b>10,848</b>	7,859
<b>Annual Change (%)</b>			-5.3%	-4.2%	-2.0%
<b>Fatalities</b>	617	<b>824</b>	544	<b>731</b>	496
<b>Annual Change (%)</b>			-11.8%	-11.3%	-8.8%
<b>Serious injuries</b>	707	<b>879</b>	540	<b>706</b>	559
<b>Annual Change (%)</b>			-23.6%	-19.7%	3.5%
<b>Slight injuries</b>	9,721	<b>12,946</b>	9,329	<b>12,565</b>	8,906
<b>Annual Change (%)</b>			-4.0%	-2.9%	-4.5%

\* Provisional data

**Graph 5: Total road traffic accidents and fatalities, 1991-2017**

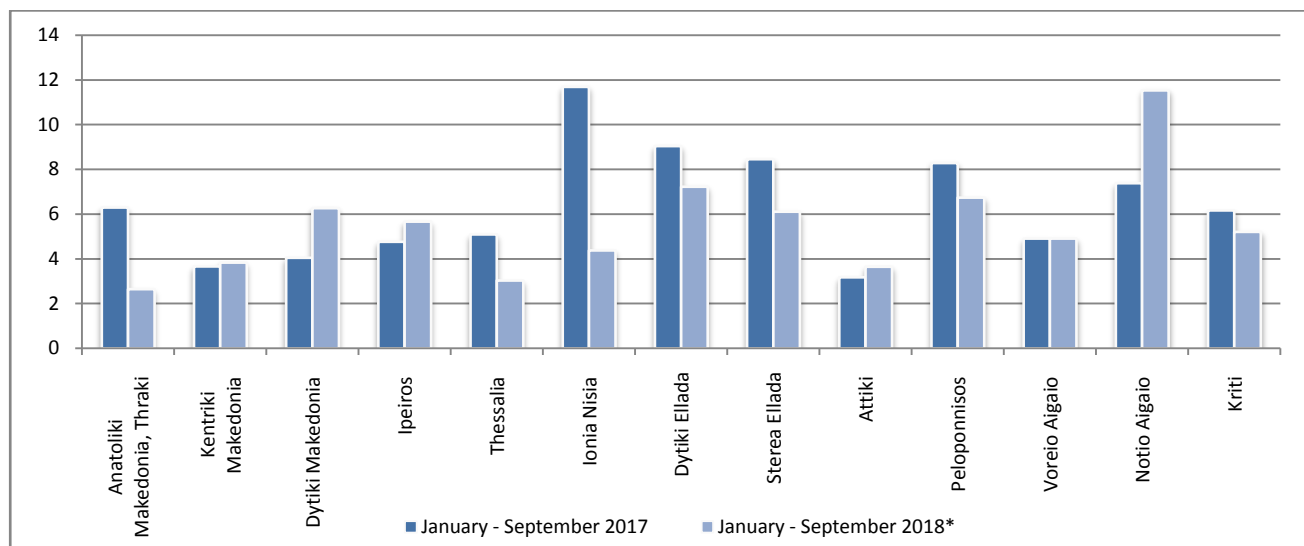


**Graph 6: Road accidents per 100,000 inhabitants**

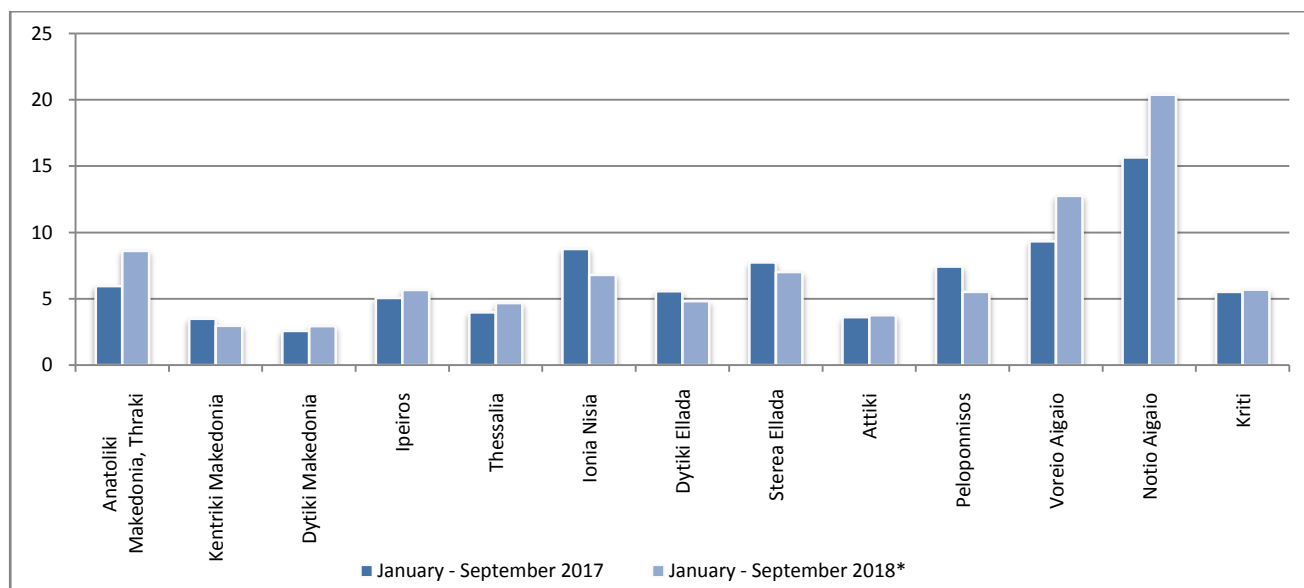


\* Provisional data

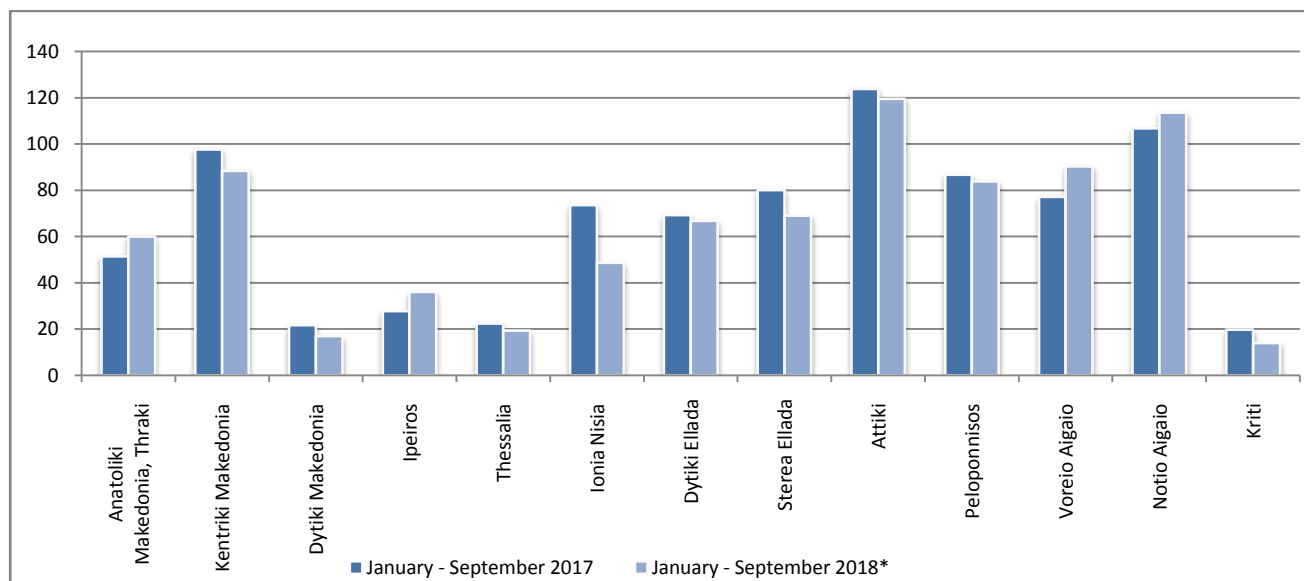
**Graph 7: Fatalities per 100,000 inhabitants**



**Graph 8: Serious injuries per 100,000 inhabitants**



**Graph 9: Slight injuries per 100,000 inhabitants**



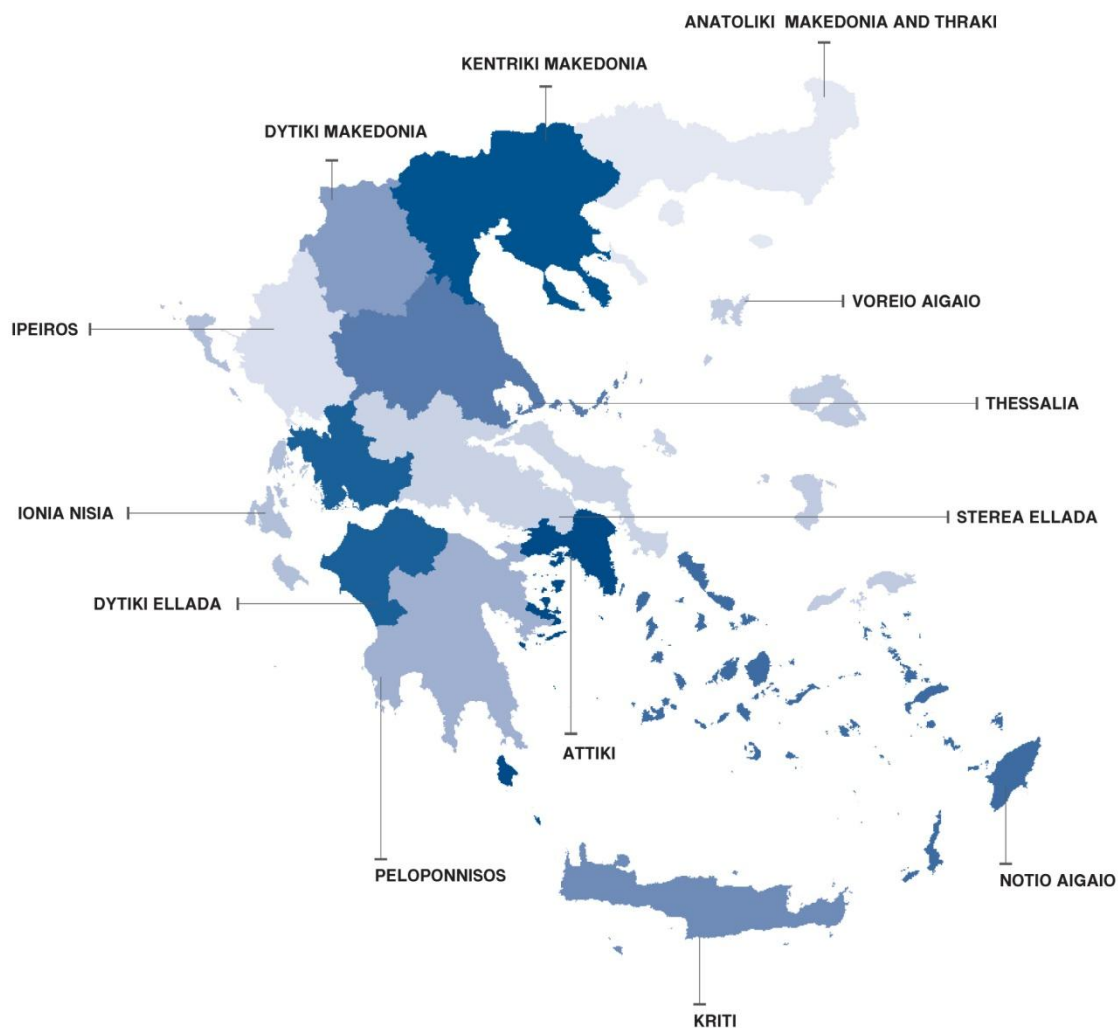
\* Provisional data

## Explanatory Notes

**Survey on Road Accidents** The survey on road accidents is conducted on a monthly basis and it records, for each department of Greece and for each month separately, the number of accidents resulting in death or injury, as well as the number of persons injured by categories (drivers, passengers, pedestrians).

On a yearly basis, road accidents are further analyzed. The competent agencies for filling in/collecting the forms on road accidents are the local Police Authorities and the local Port Authorities of Greece.

The lower level of analysis for the place where an injury road accident occurred is the Municipal – Local Commune, which is described by a 8-digit geographic code. Data are collected on a monthly basis. The main variables are the following: place of accident, kind of road, casualties, conditions of road surface and type of road.



**Legal basis** The Survey on Road Traffic Accidents is governed by Council Decision 93/704 of the European Community.

**Reference Period** Monthly.

**Availability of Data** Provisional data are available 2 months after the reference month.  
Final data are available 10 months after the reference year.



<b>National Definitions</b>	<p><b>Road accident</b> (injury accident): Any accident involving at least one road motor vehicle in motion on a public road or square to which the public has access (excluding yards, industrial sites or vehicle depot of public transport enterprises), resulting in at least one injured or killed person. Accidents with only material damages are not included.</p> <p><b>Fatality (Death):</b> Any person killed immediately or dying within 30 days as a result of an injury accident (This national definition applies since 01.01.1996)</p> <p><b>Person injured:</b> Any person who sustained an injury as result of an injury accident, and who normally needs medical treatment.</p> <p><b>Serious injury:</b> Any person who sustained an injury as result of an injury accident, such as brain damages, mutilation, multiple injuries, which may result in lack of awareness or which are life-threatening.</p> <p><b>Slight injury:</b> Any person injured who sustained minor and not life-threatening injuries.</p> <p><b>Vehicle:</b> Include motor vehicles, trolleybuses, motorcycles, bicycles, motorbikes, agricultural and road making machines, animal and hand-drawn vehicles. Railway vehicles are excluded, unless the road accident involves at least one of the aforementioned types of vehicles and therefore, railway vehicles are considered vehicles.</p>
<b>Methodology</b>	<p>The forms of the survey are filled in by the local Police Authorities and the local Port Authorities as well.</p>
<b>References</b>	<p>More information about road accidents is available on ELSTAT's website and more specifically at the link: <a href="http://www.statistics.gr">www.statistics.gr</a> &gt; Population &amp; Social Conditions &gt; Accidents &gt; Road Traffic Accidents. It should be noted that previous press releases and time series are available on ELSTAT's website: <a href="http://www.statistics.gr">www.statistics.gr</a></p>