



HELLENIC REPUBLIC

HELLENIC STATISTICAL AUTHORITY

Piraeus, 6 September 2013

PRESS RELEASE

Turnover indices in Information and Communication: 2nd quarter 2013

Year on Year growth rates

- The Turnover Index in **Motion picture, video and television program production, sound recording and music publishing activities** in the 2nd quarter 2013 as compared to the 2nd quarter 2012 decreased by 15,2%, while for the corresponding period of 2012 compared to 2011 increased by 6,2%.
- The Turnover Index in **Programming and broadcasting activities** in the 2nd quarter 2013 as compared to the 2nd quarter 2012 decreased by 4,3%, while for the corresponding period of 2012 compared to 2011 decreased by 23,0%.

Quarter on Quarter growth rates

- The Turnover Index in **Motion picture, video and television program production, sound recording and music publishing activities** in the 2nd quarter 2013 as compared to the 1st quarter 2013 increased by 21,5%, while the increase for the corresponding period of 2012 was 19,3%.
- The Turnover Index in **Programming and broadcasting activities** in the 2nd quarter 2013 as compared to the 1st quarter 2013 increased by 30,0%, while the increase for the corresponding period of 2012 was 2,6 %.

The tables and the graphs that follow present the evolution of the indices from 2005 onwards.

For further information on data please contact:

Ms. Avramopoulou Maria
Tel.: (0030)213 1352504
E-mail: avramom@statistics.gr
Fax: (0030) 213 1352496

Table 1. Evolution of Turnover Index in Motion picture, video and programme production, sound recording and music publishing activities (div. 59 Nace rev.2)

		Base year: 2005=100		
Year - Quarter	Index	Year on Year growth rates (%)	Quarter on quarter growth rates (%)	
2005	A	112,4	–	–
	B	104,4	–	-7,1
	C	55,7	–	-46,6
	D	127,5	–	128,9
<i>Annual mean</i>		100,0		
2006	A	118,0	5,0	-7,5
	B	112,8	8,0	-4,4
	C	62,7	12,6	-44,4
	D	142,8	12,0	127,8
<i>Annual mean</i>		109,1	9,1	
2007	A	134,8	14,2	-5,6
	B	129,7	15,0	-3,8
	C	70,2	12,0	-45,9
	D	144,3	1,1	105,6
<i>Annual mean</i>		119,8	9,8	
2008	A	134,4	-0,3	-6,9
	B	131,5	1,4	-2,2
	C	64,0	-8,8	-51,3
	D	145,5	0,8	127,3
<i>Annual mean</i>		118,9	-0,8	
2009	A	123,4	-8,2	-15,2
	B	103,0	-21,7	-16,5
	C	85,5	33,6	-17,0
	D	170,0	16,8	98,8
<i>Annual mean</i>		120,5	1,4	
2010	A	114,7	-7,1	-32,5
	B	122,1	18,5	6,5
	C	66,2	-22,6	-45,8
	D	146,9	-13,6	121,9
<i>Annual mean</i>		112,5	-6,6	
2011	A	91,7	-20,1	-37,6
	B	85,4	-30,1	-6,9
	C	54,0	-18,4	-36,8
	D	91,0	-38,1	68,5
<i>Annual mean</i>		80,5	-28,4	
2012	A	76,0	-17,1	-16,5
	B	90,7	6,2	19,3
	C	51,2	-5,2	-43,6
	D	88,5	-2,7	72,9
<i>Annual mean</i>		76,6	-4,9	
2013	A	63,3	-16,7	-28,5
	B	76,9	-15,2	21,5

The presented data of the first and second quarter 2009 have been revised.

**Table 2. Evolution of Turnover Index in Programming and broadcasting
(div. 60 Nace rev.2)**

		Base year: 2005=100		
Year – Quarter	Index	Year on Year growth rates (%)	Quarter on quarter growth rates (%)	
2005 A	76,3			
B	97,3		27,5	
C	77,1		-20,8	
D	149,3		93,6	
<i>Annual mean</i>	<i>100,0</i>			
2006 A	98,4	29,0	-34,1	
B	122,1	25,5	24,1	
C	92,7	20,2	-24,1	
D	152,4	2,1	64,4	
<i>Annual mean</i>	<i>116,4</i>	<i>16,4</i>		
2007 A	128,0	30,1	-16,0	
B	154,5	26,5	20,7	
C	112,7	21,6	-27,1	
D	156,3	2,6	38,7	
<i>Annual mean</i>	<i>137,9</i>	<i>18,4</i>		
2008 A	142,3	11,2	-9,0	
B	167,1	8,2	17,4	
C	119,0	5,6	-28,8	
D	141,1	-9,7	18,6	
<i>Annual mean</i>	<i>142,4</i>	<i>3,3</i>		
2009 A	117,4	-17,5	-16,8	
B	140,8	-15,7	19,9	
C	122,6	3,0	-12,9	
D	150,5	6,7	22,8	
<i>Annual mean</i>	<i>132,8</i>	<i>-6,7</i>		
2010 A	125,5	6,9	-16,6	
B	149,8	6,4	19,4	
C	118,3	-3,5	-21,0	
D	126,7	-15,8	7,1	
<i>Annual mean</i>	<i>130,1</i>	<i>-2,1</i>		
2011 A	96,6	-23,0	-23,8	
B	111,1	-25,8	15,0	
C	81,1	-31,4	-27,0	
D	90,7	-28,4	11,8	
<i>Annual mean</i>	<i>94,9</i>	<i>-27,1</i>		
2012 A	83,3	-13,8	-8,2	
B	85,5	-23,0	2,6	
C	70,0	-13,7	-18,1	
D	78,7	-13,2	12,4	
<i>Annual mean</i>	<i>79,4</i>	<i>-16,3</i>		
2013 A	62,9	-24,5	-20,1	
B	81,8	-4,3	30,0	

The presented data of the first and second quarter 2009 have been revised.

Diagram 1. Evolution of Turnover Index in Motion picture, video and programme production, sound recording and music publishing activities (2005=100,0)

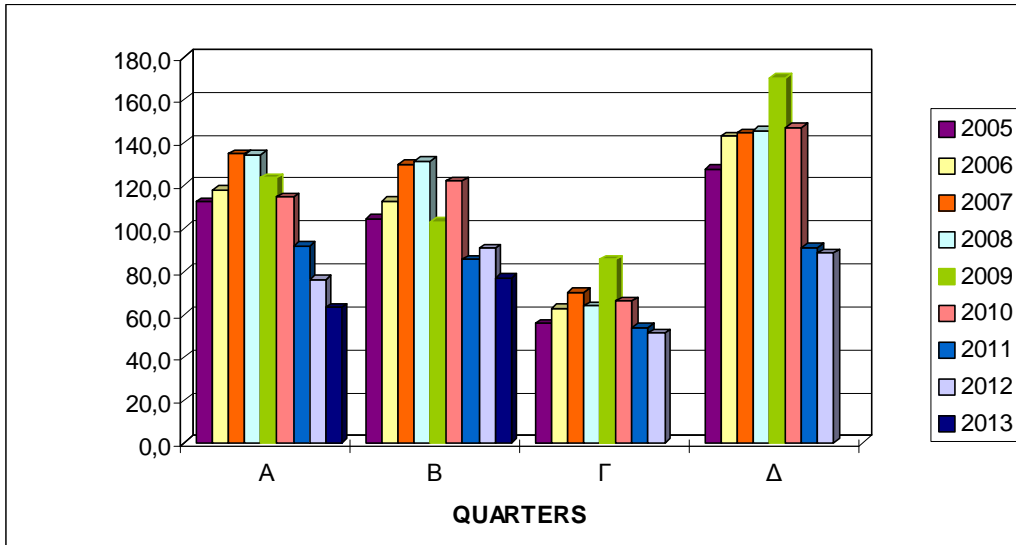
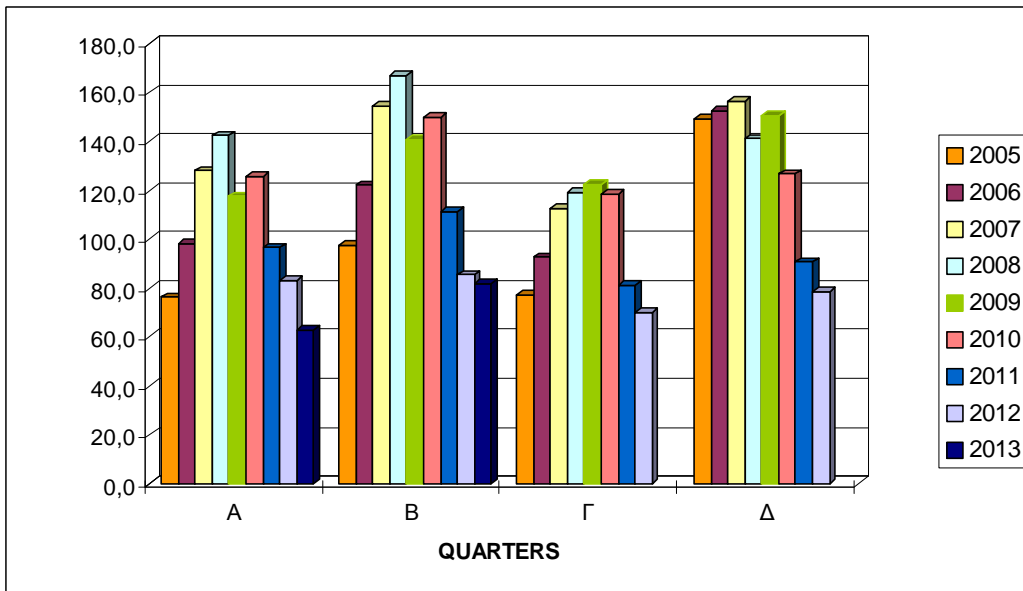


Diagram 2. Evolution of Turnover Index in Programming and Broadcasting (2005=100,0)



EXPLANATORY NOTES

Turnover indices in Information and Communication sector

The turnover indices in services are important business indicators, which show the evolution of the market for services. The objective of these indices is to calculate the activity of the surveyed sector in value terms. The Turnover comprises the totals invoiced by the observation unit during the reference period (quarter) and corresponds to the market sales of goods and services supplied to third parties. Subsidies on goods or services are also included. Turnover excludes VAT and other similar deductible taxes directly linked to turnover as well as all duties and taxes on the goods or services invoiced by the unit. Income classified as other operating income, financial income and extraordinary income in company accounts is also excluded from turnover

Legal basis The compilation and publication of these new indices in Information and Communication Sector is based upon the requirements of the Council Regulation (EC) No 1165/98 concerning short-term statistics as well as the amendment Regulation 1158/2005 of the European Parliament and Council amending the Council Regulation (EC) No 1165/98.

Reference Date 01/04/2013 – 30/06/2013

Base Year 2005=100,0

Cover The compilation of these indices comprises enterprises with year turnovers equal or higher than 250.000 euros, represented by a sample of 45 enterprises covering the total of the country.

Methodology The Turnover Indices cover the total of the country and are compiled for divisions 59 – Motion picture, video and television program production, distribution and projection activities, sound recording and music publishing activities, 60 – Programming and broadcasting activities of NACE – Rev.2. statistical classification.
The turnover indices in Information and Communication sector are being estimated by applying the forward chaining technique. In primary, the floating base index is estimated by the comparison of the appraised turnover value of the current quarter to the corresponding value of the previous quarter. The fixed index of any two-digit division of business activity concerning the current quarter results from the multiplication of the floating base index by the fixed index of the previous quarter.